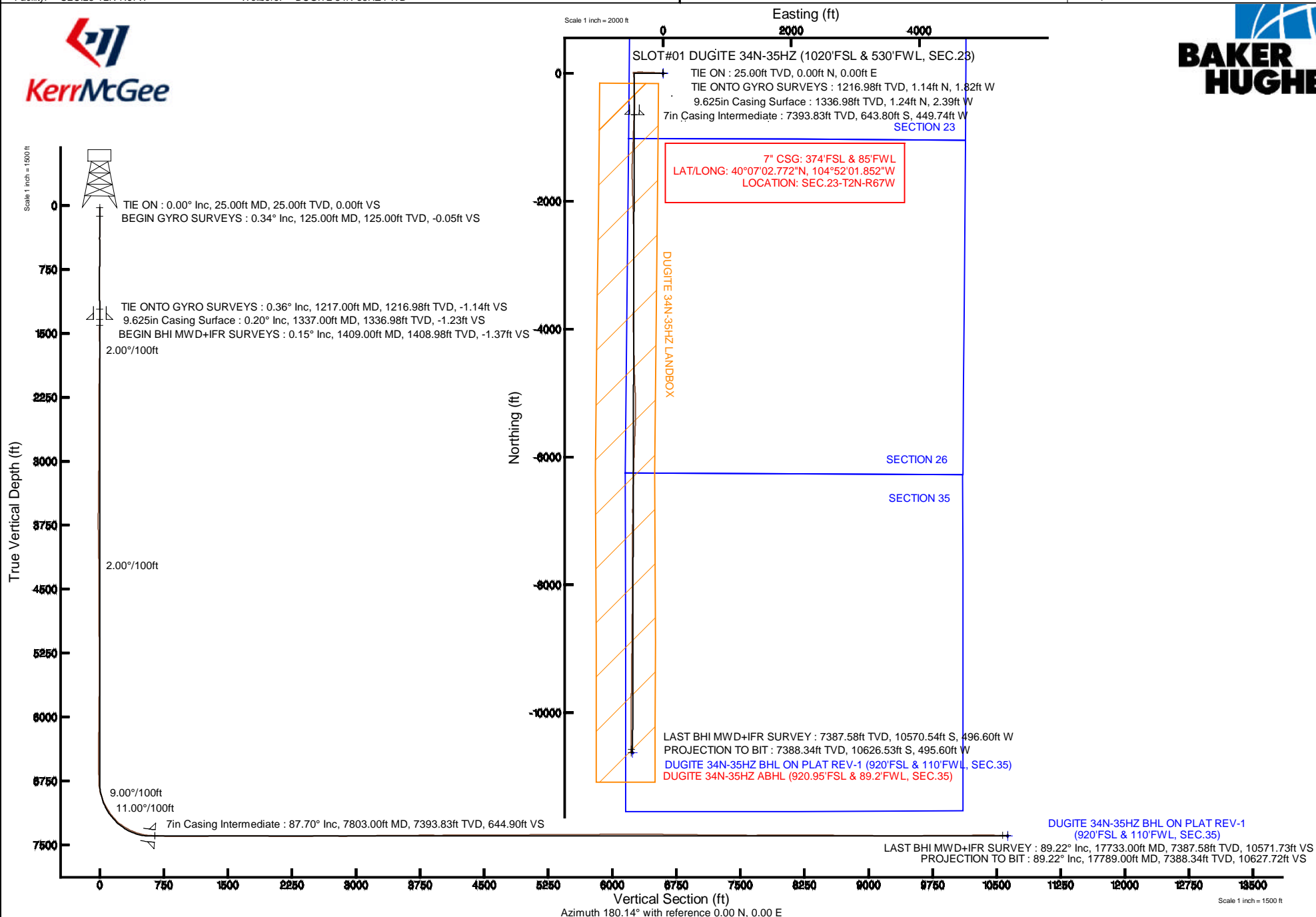


KERR-MCGEE OIL & GAS ONSHORE LP

Location: COLORADO Slot: SLOT#01 DUGITE 34N-35HZ (1020'FSL & 530'FWL, SEC.23)
 Field: WELD COUNTY (KERR MCGEE) Well: DUGITE 34N-35HZ
 Facility: SEC.23-T2N-R67W Wellbore: DUGITE 34N-35HZ PWB

Plot reference wellpath is DUGITE 34N-35HZ (REV-B.0) PWP

True vertical depths are referenced to H&P 307 (25KB) (RKB)	Grid System: NAD83 / Lambert Colorado SP, Northern Zone (501), US feet
Measured depths are referenced to H&P 307 (25KB) (RKB)	North Reference: True north
H&P 307 (25KB) (RKB) to Mean Sea Level: 4994 feet	Scale: True distance
Mean Sea Level to Mud line (At Slot: SLOT#01 DUGITE 34N-35HZ (1020'FSL & 530'FWL, SEC.23)): 0 feet	Depths are in feet
Coordinates are in feet referenced to Slot	Created by: robale01 on 25/Jul/2014



Actual Wellpath Report

DUGITE 34N-35HZ AWP

Page 1 of 7

REFERENCE WELLPATH IDENTIFICATION

Operator	KERR-MCGEE OIL & GAS ONSHORE LP	Slot	SLOT#01 DUGITE 34N-35HZ (1020'FSL & 530'FWL, SEC.23)
Area	COLORADO	Well	DUGITE 34N-35HZ
Field	WELD COUNTY (KERR MCGEE)	Wellbore	DUGITE 34N-35HZ AWB
Facility	SEC.23-T2N-R67W		

REPORT SETUP INFORMATION

Projection System	NAD83 / Lambert Colorado SP, Northern Zone (501), US feet	Software System	WellArchitect® 4.0.0
North Reference	True	User	Robiale01
Scale	0.999959	Report Generated	23/Jul/2014 at 15:54
Convergence at slot	n/a	Database/Source file	WellArchitectDB/DUGITE_34N-35HZ_AWB.xml

WELLPATH LOCATION

	Local coordinates		Grid coordinates		Geographic coordinates	
	North[ft]	East[ft]	Easting[US ft]	Northing[US ft]	Latitude	Longitude
Slot Location	0.00	0.00	3177424.80	1286904.67	40°07'09.134"N	104°51'56.063"W
Facility Reference Pt			3177424.80	1286904.67	40°07'09.134"N	104°51'56.063"W
Field Reference Pt			3197771.84	1268891.29	40°04'09.600"N	104°47'36.000"W

WELLPATH DATUM

Calculation method	Minimum curvature	H&P 307 (25'KB) (RKB) to Facility Vertical Datum	4994.00ft
Horizontal Reference Pt	Slot	H&P 307 (25'KB) (RKB) to Mean Sea Level	4994.00ft
Vertical Reference Pt	H&P 307 (25'KB) (RKB)	H&P 307 (25'KB) (RKB) to Mud Line at Slot (SLOT#01 DUGITE 34N-35HZ (1020'FSL & 530'FWL, SEC.23))	4994.00ft
MD Reference Pt	H&P 307 (25'KB) (RKB)	Section Origin	N 0.00, E 0.00 ft
Field Vertical Reference	Mean Sea Level	Section Azimuth	182.67°

REFERENCE WELLPATH IDENTIFICATION

Operator	KERR-MCGEE OIL & GAS ONSHORE LP	Slot	SLOT#01 DUGITE 34N-35HZ (1020'FSL & 530'FWL, SEC.23)
Area	COLORADO	Well	DUGITE 34N-35HZ
Field	WELD COUNTY (KERR MCGEE)	Wellbore	DUGITE 34N-35HZ AWB
Facility	SEC.23-T2N-R67W		

WELLPATH DATA (171 stations) † = interpolated/extrapolated station

MD [ft]	Inclination [°]	Azimuth [°]	TVD [ft]	Vert Sect [ft]	North [ft]	East [ft]	Latitude	Longitude	DLS [°/100ft]	Comments
0.00†	0.000	280.460	0.00	0.00	0.00	0.00	40°07'09.134"N	104°51'56.063"W	0.00	
25.00	0.000	280.460	25.00	0.00	0.00	0.00	40°07'09.134"N	104°51'56.063"W	0.00	TIE ON
125.00	0.340	280.460	125.00	-0.04	0.05	-0.29	40°07'09.135"N	104°51'56.067"W	0.34	BEGIN GYRO SURVEYS
225.00	0.520	1.600	225.00	-0.53	0.56	-0.57	40°07'09.140"N	104°51'56.070"W	0.58	
325.00	0.370	44.360	324.99	-1.23	1.25	-0.33	40°07'09.146"N	104°51'56.067"W	0.35	
425.00	0.170	165.230	424.99	-1.33	1.33	-0.07	40°07'09.147"N	104°51'56.064"W	0.48	
525.00	0.350	241.350	524.99	-1.03	1.04	-0.30	40°07'09.144"N	104°51'56.067"W	0.35	
625.00	0.480	283.580	624.99	-0.95	1.00	-0.97	40°07'09.144"N	104°51'56.076"W	0.32	
725.00	0.410	329.720	724.99	-1.33	1.40	-1.56	40°07'09.148"N	104°51'56.083"W	0.35	
825.00	0.180	37.730	824.99	-1.76	1.84	-1.65	40°07'09.152"N	104°51'56.084"W	0.38	
925.00	0.190	98.250	924.99	-1.87	1.94	-1.39	40°07'09.153"N	104°51'56.081"W	0.19	
1025.00	0.220	168.800	1024.99	-1.67	1.72	-1.18	40°07'09.151"N	104°51'56.078"W	0.24	
1125.00	0.330	223.650	1124.98	-1.26	1.33	-1.35	40°07'09.147"N	104°51'56.080"W	0.27	
1217.00	0.360	271.500	1216.98	-1.06	1.14	-1.82	40°07'09.145"N	104°51'56.086"W	0.31	TIE ONTO GYRO SURVEYS
1409.00	0.150	328.360	1408.98	-1.25	1.37	-2.55	40°07'09.148"N	104°51'56.096"W	0.16	BEGIN BHI MWD+IFR SURVEYS
1506.00	1.590	274.790	1505.97	-1.41	1.59	-3.96	40°07'09.150"N	104°51'56.114"W	1.55	
1601.00	2.930	260.910	1600.89	-0.96	1.32	-7.67	40°07'09.147"N	104°51'56.162"W	1.51	
1664.00	4.720	265.180	1663.75	-0.29	0.85	-11.84	40°07'09.142"N	104°51'56.215"W	2.88	
1758.00	6.980	274.550	1757.26	0.02	0.98	-21.39	40°07'09.144"N	104°51'56.338"W	2.60	
1852.00	8.730	277.550	1850.37	-0.77	2.37	-34.16	40°07'09.157"N	104°51'56.503"W	1.91	
1947.00	10.280	275.740	1944.06	-1.84	4.16	-49.74	40°07'09.175"N	104°51'56.703"W	1.66	
2041.00	11.210	275.050	2036.42	-2.67	5.80	-67.19	40°07'09.191"N	104°51'56.928"W	1.00	
2136.00	11.130	274.950	2129.62	-3.42	7.41	-85.52	40°07'09.207"N	104°51'57.164"W	0.09	
2230.00	10.720	273.240	2221.91	-3.86	8.69	-103.29	40°07'09.220"N	104°51'57.393"W	0.56	
2325.00	10.260	271.560	2315.32	-3.79	9.42	-120.57	40°07'09.227"N	104°51'57.615"W	0.58	
2418.00	10.250	271.910	2406.84	-3.52	9.92	-137.12	40°07'09.232"N	104°51'57.828"W	0.07	
2607.00	8.380	270.990	2593.34	-2.89	10.72	-167.70	40°07'09.240"N	104°51'58.222"W	0.99	
2701.00	9.440	266.060	2686.20	-1.80	10.30	-182.24	40°07'09.236"N	104°51'58.409"W	1.39	
2796.00	10.130	270.210	2779.82	-0.55	9.80	-198.36	40°07'09.231"N	104°51'58.616"W	1.04	
2890.00	9.880	270.070	2872.39	0.17	9.84	-214.70	40°07'09.231"N	104°51'58.827"W	0.27	
2985.00	10.640	274.540	2965.87	0.26	10.54	-231.59	40°07'09.238"N	104°51'59.044"W	1.16	
3173.00	9.740	270.980	3150.91	0.16	12.19	-264.79	40°07'09.254"N	104°51'59.471"W	0.58	
3268.00	11.080	274.990	3244.34	0.03	13.12	-281.92	40°07'09.264"N	104°51'59.692"W	1.60	
3457.00	9.560	274.460	3430.28	-1.20	15.92	-315.66	40°07'09.291"N	104°52'00.126"W	0.81	
3551.00	8.650	271.390	3523.10	-1.28	16.70	-330.51	40°07'09.299"N	104°52'00.317"W	1.10	
3645.00	8.460	274.340	3616.05	-1.33	17.39	-344.47	40°07'09.306"N	104°52'00.497"W	0.51	
3739.00	10.190	269.030	3708.81	-1.00	17.78	-359.68	40°07'09.310"N	104°52'00.693"W	2.05	
3928.00	7.470	265.500	3895.55	1.59	16.53	-388.65	40°07'09.297"N	104°52'01.066"W	1.47	
4023.00	6.280	260.520	3989.87	3.46	15.19	-399.93	40°07'09.284"N	104°52'01.211"W	1.40	
4117.00	7.140	260.820	4083.22	5.74	13.41	-410.77	40°07'09.266"N	104°52'01.350"W	0.92	
4211.00	6.200	261.020	4176.59	7.97	11.69	-421.55	40°07'09.249"N	104°52'01.489"W	1.00	
4305.00	5.130	269.580	4270.13	9.22	10.86	-430.77	40°07'09.241"N	104°52'01.608"W	1.45	
4400.00	3.780	261.740	4364.84	10.04	10.38	-438.12	40°07'09.237"N	104°52'01.702"W	1.56	
4494.00	3.220	248.320	4458.66	11.72	8.96	-443.64	40°07'09.223"N	104°52'01.774"W	1.05	
4589.00	1.310	276.310	4553.59	12.75	8.10	-447.20	40°07'09.214"N	104°52'01.819"W	2.27	

REFERENCE WELLPATH IDENTIFICATION

Operator	KERR-MCGEE OIL & GAS ONSHORE LP	Slot	SLOT#01 DUGITE 34N-35HZ (1020'FSL & 530'FWL, SEC.23)
Area	COLORADO	Well	DUGITE 34N-35HZ
Field	WELD COUNTY (KERR MCGEE)	Wellbore	DUGITE 34N-35HZ AWB
Facility	SEC.23-T2N-R67W		

WELLPATH DATA (171 stations) † = interpolated/extrapolated station

MD [ft]	Inclination [°]	Azimuth [°]	TVD [ft]	Vert Sect [ft]	North [ft]	East [ft]	Latitude	Longitude	DLS [°/100ft]	Comments
4683.00	1.500	276.800	4647.56	12.59	8.36	-449.48	40°07'09.217"N	104°52'01.849"W	0.20	
4778.00	0.390	274.610	4742.55	12.49	8.53	-451.04	40°07'09.218"N	104°52'01.869"W	1.17	
4872.00	0.360	246.500	4836.54	12.61	8.44	-451.63	40°07'09.217"N	104°52'01.876"W	0.20	
5250.00	0.910	237.500	5214.52	14.86	6.35	-455.25	40°07'09.197"N	104°52'01.923"W	0.15	
5439.00	1.020	239.090	5403.49	16.66	4.68	-457.96	40°07'09.180"N	104°52'01.958"W	0.06	
5533.00	0.580	345.530	5497.49	16.67	4.71	-458.80	40°07'09.181"N	104°52'01.969"W	1.39	
5911.00	0.760	340.990	5875.46	12.51	8.94	-460.09	40°07'09.222"N	104°52'01.985"W	0.05	
6289.00	0.720	332.160	6253.43	8.13	13.41	-462.02	40°07'09.266"N	104°52'02.010"W	0.03	
6383.00	0.270	154.600	6347.43	7.82	13.73	-462.20	40°07'09.270"N	104°52'02.012"W	1.05	
6760.00	0.180	201.360	6724.42	9.16	12.38	-462.03	40°07'09.256"N	104°52'02.010"W	0.05	
6807.00	3.070	179.880	6771.40	10.49	11.05	-462.06	40°07'09.243"N	104°52'02.011"W	6.18	
6854.00	6.940	174.910	6818.21	14.56	6.96	-461.80	40°07'09.203"N	104°52'02.007"W	8.28	
6901.00	12.160	170.590	6864.55	22.22	-0.76	-460.74	40°07'09.126"N	104°52'01.994"W	11.20	
6948.00	17.600	172.440	6909.95	34.06	-12.69	-459.00	40°07'09.009"N	104°52'01.971"W	11.62	
6995.00	21.100	173.280	6954.29	49.41	-28.14	-457.07	40°07'08.856"N	104°52'01.946"W	7.47	
7042.00	23.820	173.780	6997.72	67.13	-45.99	-455.05	40°07'08.680"N	104°52'01.920"W	5.80	
7089.00	27.120	176.200	7040.15	87.16	-66.12	-453.31	40°07'08.481"N	104°52'01.898"W	7.36	
7137.00	31.570	178.490	7081.98	110.58	-89.60	-452.26	40°07'08.248"N	104°52'01.884"W	9.56	
7184.00	34.120	180.000	7121.46	136.02	-115.09	-451.93	40°07'07.997"N	104°52'01.880"W	5.70	
7231.00	37.760	179.240	7159.51	163.56	-142.67	-451.74	40°07'07.724"N	104°52'01.878"W	7.80	
7278.00	42.220	177.730	7195.51	193.67	-172.85	-450.92	40°07'07.426"N	104°52'01.867"W	9.71	
7326.00	47.590	178.130	7229.50	227.43	-206.70	-449.71	40°07'07.091"N	104°52'01.852"W	11.20	
7373.00	53.470	178.570	7259.36	263.59	-242.96	-448.67	40°07'06.733"N	104°52'01.838"W	12.53	
7420.00	57.560	179.370	7285.97	302.25	-281.68	-447.98	40°07'06.350"N	104°52'01.829"W	8.81	
7467.00	60.880	179.230	7310.02	342.55	-322.05	-447.48	40°07'05.951"N	104°52'01.823"W	7.07	
7515.00	64.990	179.170	7331.85	385.21	-364.78	-446.89	40°07'05.529"N	104°52'01.815"W	8.56	
7562.00	68.750	179.120	7350.31	428.34	-407.99	-446.24	40°07'05.102"N	104°52'01.807"W	8.00	
7609.00	73.220	179.510	7365.62	472.69	-452.41	-445.71	40°07'04.663"N	104°52'01.800"W	9.54	
7656.00	78.390	180.630	7377.14	518.19	-497.96	-445.77	40°07'04.213"N	104°52'01.801"W	11.24	
7704.00	82.300	181.170	7385.19	565.48	-545.27	-446.52	40°07'03.746"N	104°52'01.810"W	8.22	
7756.00	85.120	181.990	7390.89	617.15	-596.93	-447.94	40°07'03.235"N	104°52'01.829"W	5.65	
7803.00†	87.698	182.395	7393.83	664.05	-643.80	-449.74	40°07'02.772"N	104°52'01.852"W	5.55	7" CASING POINT
7828.00	89.070	182.610	7394.53	689.04	-668.76	-450.83	40°07'02.525"N	104°52'01.866"W	5.55	
7922.00	88.150	182.540	7396.82	783.01	-762.64	-455.05	40°07'01.597"N	104°52'01.920"W	0.98	
8017.00	88.730	182.160	7399.40	877.97	-857.52	-458.95	40°07'00.660"N	104°52'01.970"W	0.73	
8111.00	90.360	182.370	7400.15	971.97	-951.44	-462.66	40°06'59.732"N	104°52'02.018"W	1.75	
8205.00	89.900	182.040	7399.93	1065.96	-1045.37	-466.28	40°06'58.803"N	104°52'02.065"W	0.60	
8300.00	91.070	182.510	7399.13	1160.95	-1140.29	-470.05	40°06'57.865"N	104°52'02.113"W	1.33	
8488.00	91.040	182.410	7395.67	1348.92	-1328.09	-478.12	40°06'56.010"N	104°52'02.217"W	0.06	
8583.00	89.960	180.980	7394.84	1443.90	-1423.04	-480.93	40°06'55.071"N	104°52'02.253"W	1.89	
8677.00	90.300	180.270	7394.63	1537.84	-1517.03	-481.95	40°06'54.142"N	104°52'02.266"W	0.84	
8771.00	89.660	178.880	7394.66	1631.70	-1611.03	-481.25	40°06'53.214"N	104°52'02.257"W	1.63	
8866.00	89.470	179.060	7395.38	1726.50	-1706.01	-479.55	40°06'52.275"N	104°52'02.235"W	0.28	
8960.00	89.780	178.440	7396.00	1820.28	-1799.98	-477.50	40°06'51.346"N	104°52'02.209"W	0.74	
9054.00	90.000	178.150	7396.18	1914.00	-1893.94	-474.70	40°06'50.418"N	104°52'02.173"W	0.39	

Actual Wellpath Report

DUGITE 34N-35HZ AWP

Page 4 of 7

REFERENCE WELLPATH IDENTIFICATION

Operator	KERR-MCGEE OIL & GAS ONSHORE LP	Slot	SLOT#01 DUGITE 34N-35HZ (1020'FSL & 530'FWL, SEC.23)
Area	COLORADO	Well	DUGITE 34N-35HZ
Field	WELD COUNTY (KERR MCGEE)	Wellbore	DUGITE 34N-35HZ AWB
Facility	SEC.23-T2N-R67W		

WELLPATH DATA (171 stations)

MD [ft]	Inclination [°]	Azimuth [°]	TVD [ft]	Vert Sect [ft]	North [ft]	East [ft]	Latitude	Longitude	DLS [°/100ft]	Comments
9149.00	88.920	178.220	7397.07	2008.70	-1988.89	-471.69	40°06'49.480"N	104°52'02.134"W	1.14	
9243.00	89.260	177.920	7398.56	2102.39	-2082.82	-468.52	40°06'48.551"N	104°52'02.093"W	0.48	
9337.00	89.560	177.940	7399.53	2196.06	-2176.76	-465.13	40°06'47.623"N	104°52'02.050"W	0.32	
9432.00	90.860	178.870	7399.18	2290.80	-2271.72	-462.49	40°06'46.685"N	104°52'02.016"W	1.68	
9526.00	90.150	178.640	7398.36	2384.57	-2365.69	-460.44	40°06'45.756"N	104°52'01.989"W	0.79	
9621.00	91.070	179.210	7397.34	2479.36	-2460.67	-458.66	40°06'44.817"N	104°52'01.966"W	1.14	
9715.00	90.240	178.560	7396.27	2573.15	-2554.64	-456.83	40°06'43.889"N	104°52'01.943"W	1.12	
9809.00	90.000	179.790	7396.07	2666.97	-2648.63	-455.48	40°06'42.960"N	104°52'01.925"W	1.33	
9904.00	89.590	179.530	7396.41	2761.84	-2743.63	-454.91	40°06'42.021"N	104°52'01.918"W	0.51	
9998.00	89.690	180.350	7397.00	2855.73	-2837.62	-454.82	40°06'41.092"N	104°52'01.917"W	0.88	
10092.00	91.380	180.800	7396.13	2949.66	-2931.61	-455.76	40°06'40.163"N	104°52'01.929"W	1.86	
10187.00	90.860	179.350	7394.27	3044.54	-3026.59	-455.88	40°06'39.225"N	104°52'01.930"W	1.62	
10281.00	90.330	179.260	7393.29	3138.38	-3120.58	-454.74	40°06'38.296"N	104°52'01.916"W	0.57	
10376.00	91.200	181.080	7392.02	3233.27	-3215.57	-455.03	40°06'37.357"N	104°52'01.919"W	2.12	
10564.00	90.580	180.690	7389.10	3421.16	-3403.52	-457.93	40°06'35.500"N	104°52'01.957"W	0.39	
10753.00	89.930	180.180	7388.26	3610.01	-3592.51	-459.36	40°06'33.632"N	104°52'01.975"W	0.44	
10848.00	91.100	180.650	7387.41	3704.93	-3687.50	-460.05	40°06'32.694"N	104°52'01.984"W	1.33	
11036.00	89.470	180.330	7386.47	3892.79	-3875.49	-461.66	40°06'30.836"N	104°52'02.005"W	0.88	
11130.00	90.000	179.440	7386.91	3986.67	-3969.48	-461.47	40°06'29.907"N	104°52'02.002"W	1.10	
11225.00	91.130	179.520	7385.97	4081.52	-4064.47	-460.61	40°06'28.968"N	104°52'01.991"W	1.19	
11319.00	90.580	179.180	7384.57	4175.35	-4158.46	-459.54	40°06'28.040"N	104°52'01.977"W	0.69	
11413.00	89.690	178.810	7384.35	4269.16	-4252.44	-457.89	40°06'27.111"N	104°52'01.956"W	1.03	
11507.00	90.700	178.460	7384.03	4362.92	-4346.41	-455.65	40°06'26.182"N	104°52'01.927"W	1.14	
11602.00	90.270	178.530	7383.22	4457.66	-4441.38	-453.16	40°06'25.244"N	104°52'01.895"W	0.46	
11696.00	90.180	179.140	7382.85	4551.45	-4535.35	-451.25	40°06'24.315"N	104°52'01.870"W	0.66	
11791.00	89.930	178.570	7382.76	4646.24	-4630.34	-449.35	40°06'23.376"N	104°52'01.846"W	0.66	
11885.00	90.430	178.500	7382.47	4740.00	-4724.30	-446.95	40°06'22.448"N	104°52'01.815"W	0.54	
12074.00	89.350	176.760	7382.83	4928.26	-4913.13	-439.13	40°06'20.582"N	104°52'01.714"W	1.08	
12168.00	91.100	176.570	7382.46	5021.73	-5006.97	-433.66	40°06'19.654"N	104°52'01.644"W	1.87	
12262.00	91.570	178.640	7380.27	5115.34	-5100.86	-429.74	40°06'18.727"N	104°52'01.593"W	2.26	
12357.00	90.490	179.890	7378.56	5210.15	-5195.83	-428.52	40°06'17.788"N	104°52'01.578"W	1.74	
12451.00	88.820	180.240	7379.13	5304.05	-5289.82	-428.62	40°06'16.859"N	104°52'01.579"W	1.82	
12545.00	89.960	181.850	7380.13	5398.00	-5383.80	-430.34	40°06'15.931"N	104°52'01.601"W	2.10	
12640.00	89.660	181.630	7380.45	5492.99	-5478.75	-433.22	40°06'14.992"N	104°52'01.638"W	0.39	
12734.00	89.690	182.240	7380.98	5586.98	-5572.70	-436.40	40°06'14.064"N	104°52'01.679"W	0.65	
12828.00	91.200	182.840	7380.25	5680.97	-5666.60	-440.56	40°06'13.136"N	104°52'01.733"W	1.73	
13016.00	91.040	182.050	7376.57	5868.93	-5854.39	-448.58	40°06'11.280"N	104°52'01.836"W	0.43	
13111.00	90.920	182.060	7374.95	5963.91	-5949.32	-451.99	40°06'10.342"N	104°52'01.880"W	0.13	
13300.00	90.400	181.840	7372.77	6152.88	-6138.19	-458.42	40°06'08.476"N	104°52'01.962"W	0.30	
13489.00	90.090	181.590	7371.96	6341.86	-6327.11	-464.07	40°06'06.609"N	104°52'02.035"W	0.21	
13678.00	88.180	181.930	7374.82	6530.80	-6515.99	-469.88	40°06'04.742"N	104°52'02.110"W	1.03	
13772.00	89.040	180.600	7377.10	6624.74	-6609.93	-471.95	40°06'03.814"N	104°52'02.136"W	1.68	
13867.00	90.060	180.480	7377.84	6719.67	-6704.92	-472.85	40°06'02.875"N	104°52'02.148"W	1.08	
13961.00	88.860	180.610	7378.73	6813.60	-6798.91	-473.74	40°06'01.946"N	104°52'02.159"W	1.28	
14056.00	89.840	179.480	7379.81	6908.49	-6893.91	-473.82	40°06'01.007"N	104°52'02.160"W	1.57	

REFERENCE WELLPATH IDENTIFICATION

Operator	KERR-MCGEE OIL & GAS ONSHORE LP	Slot	SLOT#01 DUGITE 34N-35HZ (1020'FSL & 530'FWL, SEC.23)
Area	COLORADO	Well	DUGITE 34N-35HZ
Field	WELD COUNTY (KERR MCGEE)	Wellbore	DUGITE 34N-35HZ AWB
Facility	SEC.23-T2N-R67W		

WELLPATH DATA (171 stations)

MD [ft]	Inclination [°]	Azimuth [°]	TVD [ft]	Vert Sect [ft]	North [ft]	East [ft]	Latitude	Longitude	DLS [°/100ft]	Comments
14150.00	88.240	180.250	7381.38	7002.36	-6987.89	-473.59	40°06'00.079"N	104°52'02.157"W	1.89	
14244.00	90.060	180.470	7382.78	7096.27	-7081.87	-474.19	40°05'59.150"N	104°52'02.165"W	1.95	
14339.00	90.000	180.140	7382.73	7191.19	-7176.87	-474.69	40°05'58.211"N	104°52'02.171"W	0.35	
14434.00	89.290	179.750	7383.32	7286.08	-7271.87	-474.60	40°05'57.272"N	104°52'02.170"W	0.85	
14528.00	89.560	180.230	7384.26	7379.97	-7365.86	-474.58	40°05'56.344"N	104°52'02.170"W	0.59	
14623.00	89.440	180.040	7385.09	7474.88	-7460.86	-474.81	40°05'55.405"N	104°52'02.173"W	0.24	
14718.00	88.820	179.780	7386.53	7569.76	-7555.85	-474.66	40°05'54.466"N	104°52'02.171"W	0.71	
14811.00	90.460	180.980	7387.11	7662.68	-7648.84	-475.28	40°05'53.547"N	104°52'02.179"W	2.19	
14906.00	90.550	180.570	7386.28	7757.62	-7743.83	-476.56	40°05'52.608"N	104°52'02.195"W	0.44	
15000.00	89.930	180.300	7385.88	7851.55	-7837.82	-477.27	40°05'51.680"N	104°52'02.205"W	0.72	
15094.00	89.930	180.400	7386.00	7945.47	-7931.82	-477.85	40°05'50.751"N	104°52'02.212"W	0.11	
15189.00	90.210	180.380	7385.88	8040.39	-8026.82	-478.49	40°05'49.812"N	104°52'02.220"W	0.30	
15377.00	90.670	180.280	7384.44	8228.23	-8214.81	-479.58	40°05'47.954"N	104°52'02.234"W	0.25	
15471.00	91.070	180.000	7383.01	8322.13	-8308.80	-479.81	40°05'47.025"N	104°52'02.237"W	0.52	
15566.00	89.160	180.420	7382.82	8417.04	-8403.79	-480.16	40°05'46.087"N	104°52'02.241"W	2.06	
15660.00	88.550	180.420	7384.70	8510.94	-8497.77	-480.84	40°05'45.158"N	104°52'02.250"W	0.65	
15829.00	88.890	180.460	7388.47	8679.77	-8666.72	-482.14	40°05'43.488"N	104°52'02.267"W	0.20	
15923.00	89.320	180.420	7389.94	8773.69	-8760.71	-482.86	40°05'42.559"N	104°52'02.276"W	0.46	
16018.00	89.320	181.070	7391.07	8868.63	-8855.69	-484.10	40°05'41.621"N	104°52'02.292"W	0.68	
16112.00	90.150	180.690	7391.50	8962.58	-8949.68	-485.54	40°05'40.692"N	104°52'02.311"W	0.97	
16207.00	89.660	180.810	7391.66	9057.53	-9044.67	-486.79	40°05'39.753"N	104°52'02.327"W	0.53	
16301.00	89.130	181.110	7392.65	9151.48	-9138.65	-488.36	40°05'38.825"N	104°52'02.347"W	0.65	
16395.00	89.260	180.450	7393.98	9245.42	-9232.63	-489.64	40°05'37.896"N	104°52'02.363"W	0.72	
16490.00	90.300	180.180	7394.34	9340.34	-9327.63	-490.16	40°05'36.957"N	104°52'02.370"W	1.13	
16584.00	90.430	180.310	7393.74	9434.25	-9421.63	-490.56	40°05'36.028"N	104°52'02.375"W	0.20	
16679.00	90.550	180.530	7392.93	9529.18	-9516.62	-491.26	40°05'35.089"N	104°52'02.384"W	0.26	
16773.00	90.580	180.790	7392.00	9623.11	-9610.61	-492.34	40°05'34.161"N	104°52'02.398"W	0.28	
16867.00	90.550	181.130	7391.07	9717.07	-9704.59	-493.92	40°05'33.232"N	104°52'02.418"W	0.36	
16961.00	90.800	179.920	7389.97	9810.99	-9798.58	-494.78	40°05'32.303"N	104°52'02.429"W	1.31	
17056.00	90.370	180.160	7389.00	9905.89	-9893.58	-494.85	40°05'31.364"N	104°52'02.430"W	0.52	
17150.00	90.330	180.290	7388.42	9999.80	-9987.57	-495.21	40°05'30.435"N	104°52'02.435"W	0.14	
17339.00	90.550	180.600	7386.97	10188.65	-10176.56	-496.68	40°05'28.568"N	104°52'02.454"W	0.20	
17527.00	89.810	180.010	7386.38	10376.49	-10364.56	-497.68	40°05'26.710"N	104°52'02.467"W	0.50	
17622.00	89.840	179.940	7386.67	10471.38	-10459.55	-497.64	40°05'25.771"N	104°52'02.466"W	0.08	
17733.00	89.220	178.980	7387.58	10582.20	-10570.54	-496.60	40°05'24.674"N	104°52'02.452"W	1.03	LAST BHI MWD+IFR SURVEY
17789.00	89.220	178.980	7388.34	10638.08	-10626.53	-495.60	40°05'24.121"N	104°52'02.440"W	0.00	PROJECTION TO BIT

Actual Wellpath Report

DUGITE 34N-35HZ AWP

Page 6 of 7

REFERENCE WELLPATH IDENTIFICATION

Operator	KERR-MCGEE OIL & GAS ONSHORE LP	Slot	SLOT#01 DUGITE 34N-35HZ (1020'FSL & 530'FWL, SEC.23)
Area	COLORADO	Well	DUGITE 34N-35HZ
Field	WELD COUNTY (KERR MCGEE)	Wellbore	DUGITE 34N-35HZ AWB
Facility	SEC.23-T2N-R67W		

HOLE & CASING SECTIONS - Ref Wellbore: DUGITE 34N-35HZ AWB Ref Wellpath: DUGITE 34N-35HZ AWP

String/Diameter	Start MD [ft]	End MD [ft]	Interval [ft]	Start TVD [ft]	End TVD [ft]	Start N/S [ft]	Start E/W [ft]	End N/S [ft]	End E/W [ft]
13.5in Open Hole	25.00	1347.00	1322.00	25.00	1346.98	0.00	0.00	1.26	-2.42
9.625in Casing Surface	25.00	1337.00	1312.00	25.00	1336.98	0.00	0.00	1.24	-2.39
8.75in Open Hole	1347.00	7805.00	6458.00	1346.98	7393.91	1.26	-2.42	-645.79	-449.82
7in Casing Intermediate	25.00	7803.00	7778.00	25.00	7393.83	0.00	0.00	-643.80	-449.74
6.125in Open Hole	7805.00	17789.00	9984.00	7393.91	7388.34	-645.79	-449.82	-10626.53	-495.60

WELLPATH COMPOSITION - Ref Wellbore: DUGITE 34N-35HZ AWB Ref Wellpath: DUGITE 34N-35HZ AWP

Start MD [ft]	End MD [ft]	Positional Uncertainty Model	Log Name/Comment	Wellbore
25.00	1217.00	Generic gyro - continuous (Standard)	MS GYRO SURVEYS FROM ANADARKO <125-1217>	DUGITE 34N-35HZ AWB
1217.00	7756.00	NaviTrak (MAGCORR,IFR)	BHI NAVITRAK MWD+IFR 8 3/4" <1409-7756>	DUGITE 34N-35HZ AWB
7756.00	17733.00	NaviTrak (MAGCORR,IFR)	BHI NAVITRAK MWD+IFR 6 1/8" <7828-17733>	DUGITE 34N-35HZ AWB
17733.00	17789.00	Blind Drilling (std)	Projection to bit	DUGITE 34N-35HZ AWB

Actual Wellpath Report

DUGITE 34N-35HZ AWP

Page 7 of 7

REFERENCE WELLPATH IDENTIFICATION				
Operator	KERR-MCGEE OIL & GAS ONSHORE LP	Slot	SLOT#01 DUGITE 34N-35HZ (1020'FSL & 530'FWL, SEC.23)	
Area	COLORADO	Well	DUGITE 34N-35HZ	
Field	WELD COUNTY (KERR MCGEE)	Wellbore	DUGITE 34N-35HZ AWB	
Facility	SEC.23-T2N-R67W			

WELLPATH COMMENTS				
MD [ft]	Inclination [°]	Azimuth [°]	TVD [ft]	Comment
25.00	0.000	280.460	25.00	TIE ON
125.00	0.340	280.460	125.00	BEGIN GYRO SURVEYS
1217.00	0.360	271.500	1216.98	TIE ONTO GYRO SURVEYS
1409.00	0.150	328.360	1408.98	BEGIN BHI MWD+IFR SURVEYS
7803.00	87.698	182.395	7393.83	7" CASING POINT
17733.00	89.220	178.980	7387.58	LAST BHI MWD+IFR SURVEY
17789.00	89.220	178.980	7388.34	PROJECTION TO BIT