

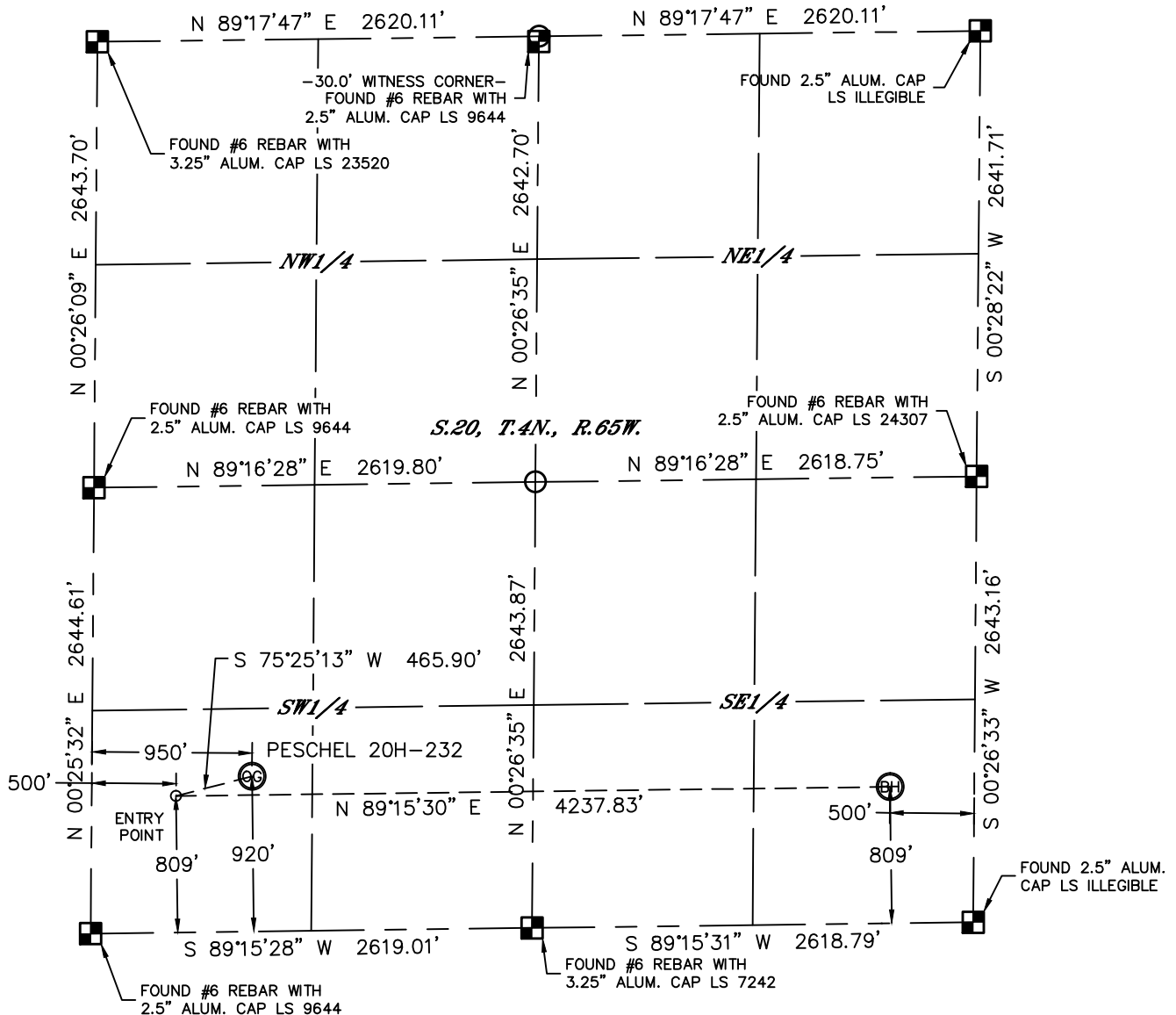


Lat40°, Inc. 1635 Foxtrail Drive, Suite 325 Loveland, CO 970-776-3321

WELL LOCATION CERTIFICATE

THIS MAP DOES NOT REPRESENT A BOUNDARY SURVEY

SECTION: 20
TOWNSHIP: 4N
RANGE: 65W



In accordance with a request from Jake Bragg with PDC ENERGY Lat40°, Inc. has determined the surface location of the PESCHEL 20H-232 to be 920' from the SOUTH line and 950' from the WEST line and the bottom hole to be 809' from the SOUTH line and 500' from the EAST line as measured at right angles from the section lines of Section 20, Township 4 North, Range 65 West of the Sixth Principal Meridian, County of Weld, State of Colorado.

I hereby state that this Well Location Certificate was prepared by me, or under my direct supervision, that the fieldwork was completed on 7/17/2014, for and on behalf of PDC ENERGY. That this is not a Land Survey Plat or an Improvement Survey Plat, and that it is not to be relied upon for establishment of fence, building, or other future improvement lines.

SURFACE LOCATION

LAT: 40.29316°N
LONG: 104.69315°W
PDOP: 1.8
ELEV: 4802'
1/4,1/4: SWSW

BOTTOM HOLE

LAT: 40.29289°N
LONG: 104.67958°W

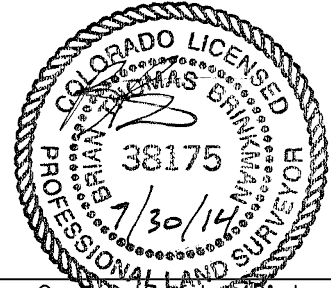
ENTRY POINT

LAT: 40.29285°N
LONG: 104.69477°W

LEGEND

- = ALIQUOT MONUMENT AS DESCRIBED
- = CALCULATED POSITION

Brian T. Brinkman—On behalf of Lat40°, Inc.
Colorado Licensed Professional
Land Surveyor No. 38175
DATE: 7/30/2014
PROJECT#: 2014132



NOTE:

- 1) Bearings shown are Grid Bearings of the Colorado State Plane Coordinate System, North Zone, North American Datum 1983/2007. The lineal dimensions as contained herein are based upon the "U.S. Survey Foot."
- 2) Ground elevations are based on an observed GPS elevation (NAVD 1988 DATUM).
- 3) IMPROVEMENTS: See LOCATION DRAWING for all visible improvements within 500' of disturbed area.
- 4) SURFACE USE: CROP LAND
- 5) INSTRUMENT OPERATOR: BRIAN ROTTINGHAUS
- 6) NEAREST CULTURAL ITEMS:
BUILDING: ±977' NW
BUILDING UNIT: ±1033' NW
HIGH OCCUPANCY BUILDING UNIT: 5280'+
DESIGNATED OUTSIDE ACTIVITY AREA: 5280'+
PUBLIC ROAD: ±921' S (CR 42)
ABOVEGROUND UTILITY: ±666' SE
RAILROAD: 5280'+
PROPERTY LINE: ±731' NE

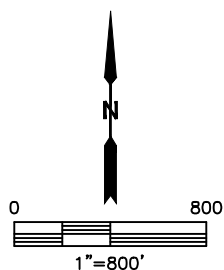
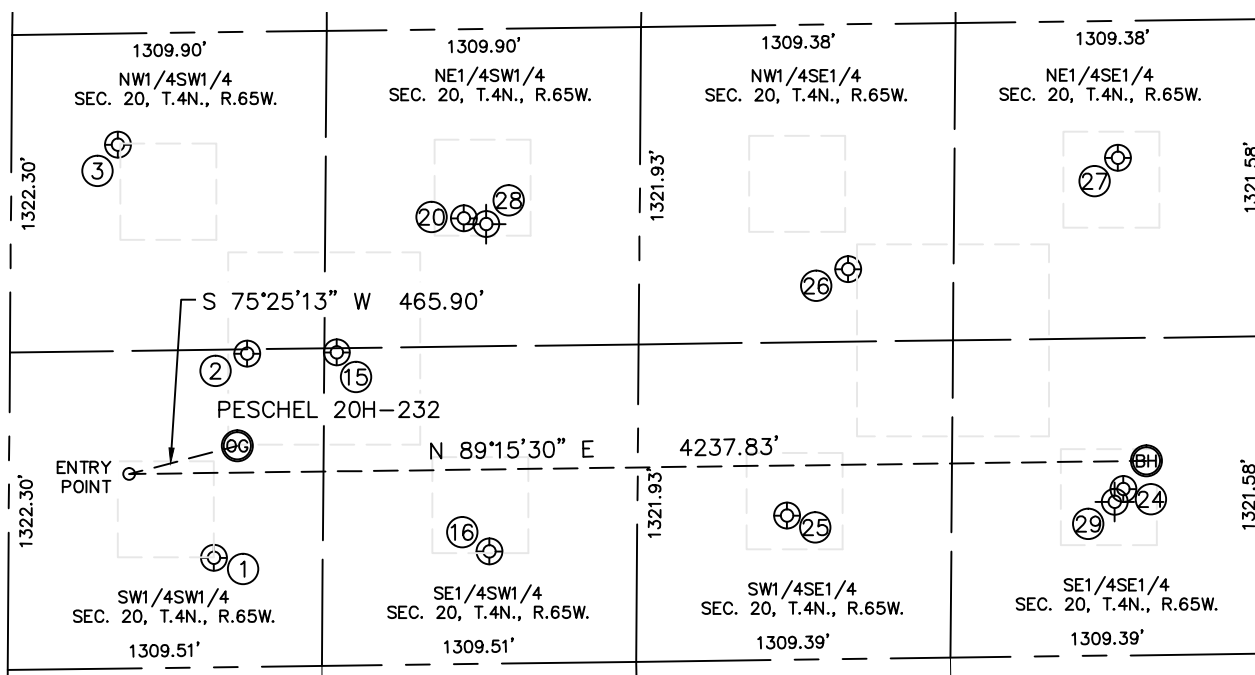


Lat40°, Inc. 1635 Foxtrail Drive, Suite 325 Loveland, CO 970-776-3321

SITE SKETCH

PESCHEL 20H-232

SECTION: 20
TOWNSHIP: 4N
RANGE: 65W



WELL NO.	WELL NAME	SHL FOOTAGE				SHL LAT°	SHL LONG°	PDOP	ELEV (FT.)	1/4/1/4
1	PESCHEL 14-20	456	FSL	855	FWL	40.29188	-104.69352	1.4	4802	SWSW
2	PESCHEL 5-20	1303	FSL	988	FWL	40.29421	-104.69299	1.6	4802	SWSW
3	PESCHEL 13-20	2181	FSL	442	FWL	40.29661	-104.69489	1.7	4786	NWSW
15	EDWARD HEMPLE UNIT 2	1304	FSL	1361	FWL	40.29422	-104.69165	1.7	4810	SESW
16	PESCHEL 24-20	467	FSL	2003	FWL	40.29193	-104.68940	1.8	4819	SESW
20	PESCHEL 23-20B	1856	FSL	1886	FWL	40.29574	-104.68974	1.6	4823	NESW
24	PESCHEL 44-20	693	FSL	595	FEL	40.29257	-104.67993	1.7	4884	SESE
25	PESCHEL 34-20	600	FSL	1995	FEL	40.29230	-104.68495	1.6	4849	SWSE
26	PESCHEL 33-20	1623	FSL	1749	FEL	40.29511	-104.68401	1.7	4842	NWSE
27	PESCHEL 43-20	2072	FSL	628	FEL	40.29636	-104.67996	1.9	4830	NESE
28	PESCHEL 23-20	1830	FSL	1980	FWL	40.29557	-104.68923	NA	4418	NESW
29	PESCHEL 44-20S	640	FSL	630	FEL	40.29234	-104.67991	NA	4885	SESE

NOTE: THE ABANDONED WELL DATA SHOWN IN RED ABOVE WAS OBTAINED FROM COGCC SCOUT CARDS.

DATE: 7/30/2014
PROJECT#: 2014132