

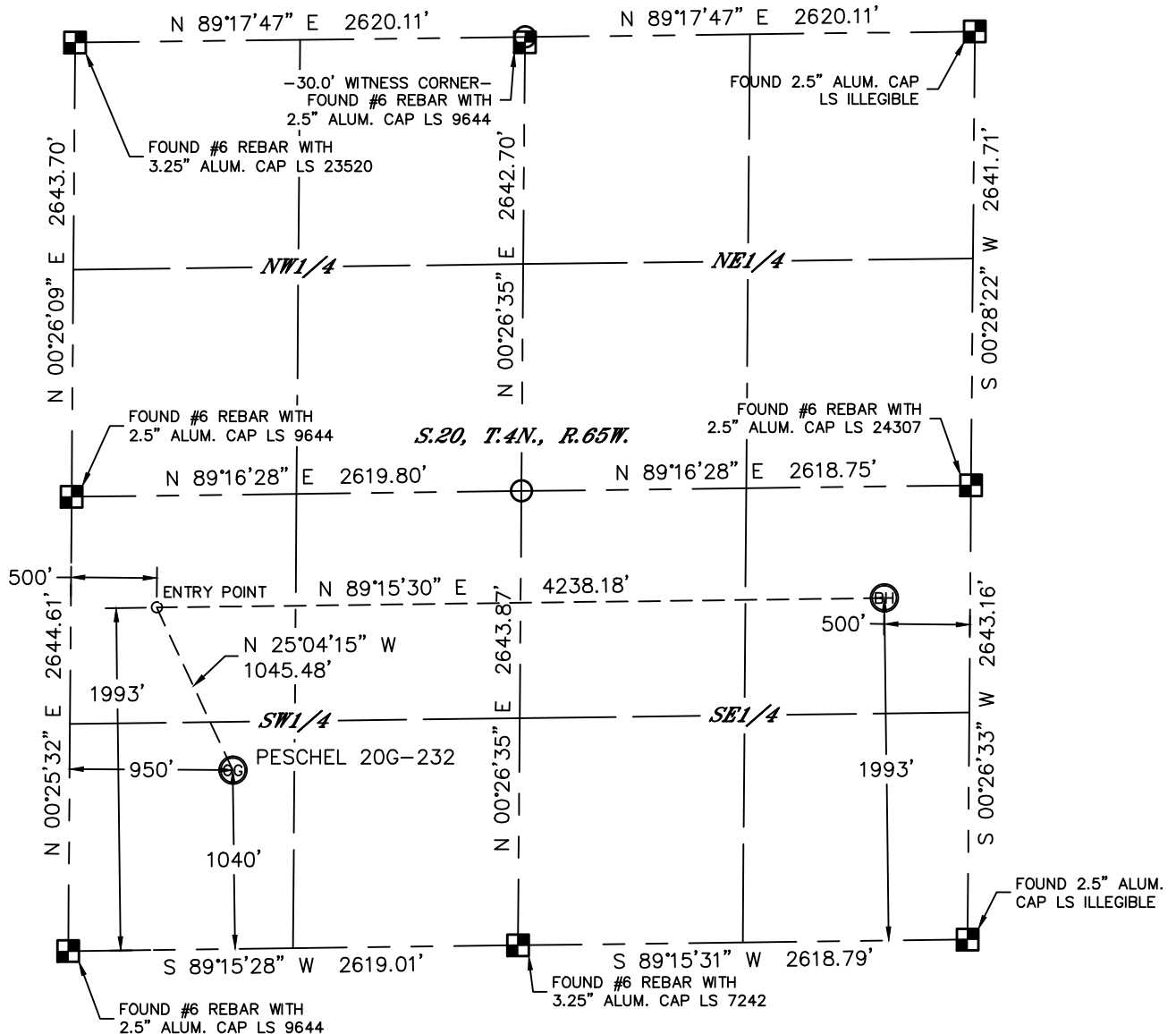


Lat40°, Inc. 1635 Foxtrail Drive, Suite 325 Loveland, CO 970-776-3321

WELL LOCATION CERTIFICATE

THIS MAP DOES NOT REPRESENT A BOUNDARY SURVEY

SECTION: 20
TOWNSHIP: 4N
RANGE: 65W



In accordance with a request from Jake Bragg with PDC ENERGY Lat40°, Inc. has determined the surface location of the PESCHEL 20G-232 to be 1040' from the SOUTH line and 950' from the WEST line and the bottom hole to be 1993' from the SOUTH line and 500' from the EAST line as measured at right angles from the section lines of Section 20, Township 4 North, Range 65 West of the Sixth Principal Meridian, County of Weld, State of Colorado.

I hereby state that this Well Location Certificate was prepared by me, or under my direct supervision, that the fieldwork was completed on 7/17/2014, for and on behalf of PDC ENERGY. That this is not a Land Survey Plat or an Improvement Survey Plat, and that it is not to be relied upon for establishment of fence, building, or other future improvement lines.

SURFACE LOCATION

LAT: 40.29349°N
LONG: 104.69314°W
PDOP: 1.5
ELEV: 4801'
1/4, 1/4: SWSW

BOTTOM HOLE

LAT: 40.29614°N
LONG: 104.67951°W

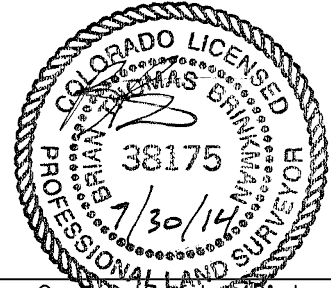
ENTRY POINT

LAT: 40.29610°N
LONG: 104.69470°W

LEGEND

- = ALIQUOT MONUMENT AS DESCRIBED
- = CALCULATED POSITION

Brian T. Brinkman—On behalf of Lat40°, Inc.
Colorado Licensed Professional
Land Surveyor No. 38175
DATE: 7/30/2014
PROJECT#: 2014132



NOTE:

- Bearings shown are Grid Bearings of the Colorado State Plane Coordinate System, North Zone, North American Datum 1983/2007. The lineal dimensions as contained herein are based upon the "U.S. Survey Foot."
- Ground elevations are based on an observed GPS elevation (NAVD 1988 DATUM).
- IMPROVEMENTS: See LOCATION DRAWING for all visible improvements within 500' of disturbed area.
- SURFACE USE: CROP LAND
- INSTRUMENT OPERATOR: BRIAN ROTTINGHAUS
- NEAREST CULTURAL ITEMS:
BUILDING: ±901' NW
BUILDING UNIT: ±966' NW
HIGH OCCUPANCY BUILDING UNIT: 5280'+
DESIGNATED OUTSIDE ACTIVITY AREA: 5280'+
PUBLIC ROAD: ±944' W (CR 39)
ABOVEGROUND UTILITY: ±781' SE
RAILROAD: 5280'+
PROPERTY LINE: ±683' NE

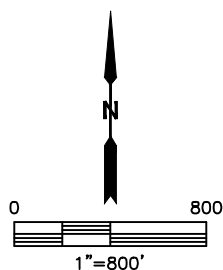
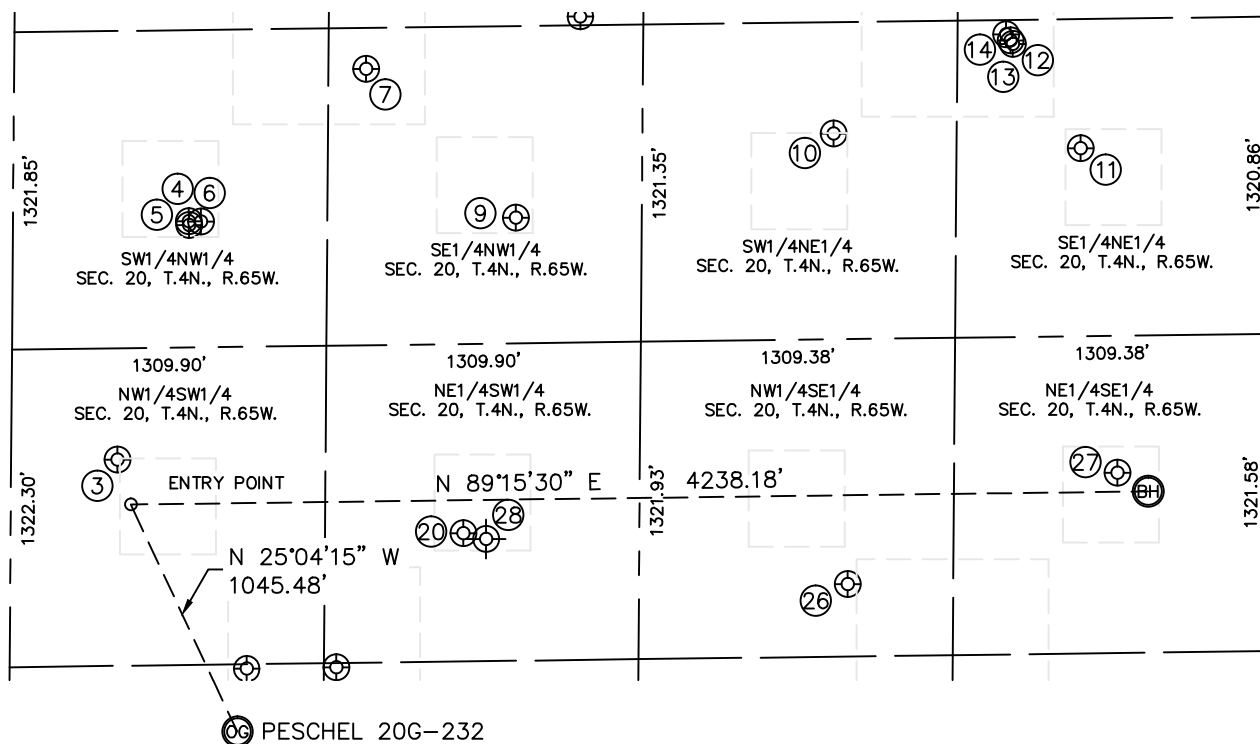


Lat40°, Inc. 1635 Foxtrail Drive, Suite 325 Loveland, CO 970-776-3321

SITE SKETCH

PESCHEL 20G-232

SECTION: 20
TOWNSHIP: 4N
RANGE: 65W



WELL NO.	WELL NAME	SHL FOOTAGE				SHL LAT°	SHL LONG°	PDOP	ELEV (FT.)	1/4/1/4
3	PESCHEL 13-20	2181	FSL	442	FWL	40.29661	-104.69489	1.7	4786	NWSW
4	BREHON 31-20	2117	FNL	732	FWL	40.29933	-104.69380	2.3	4775	SWNW
5	BREHON 22-20	2134	FNL	734	FWL	40.29929	-104.69379	1.6	4775	SWNW
6	HSR-RAWITCH 5-20	2119	FNL	783	FWL	40.29933	-104.69361	1.6	4775	SWNW
7	SHABLE 18-20	1492	FNL	1465	FWL	40.30105	-104.69113	1.5	4774	SENW
9	HSR-PECK 6-20	2120	FNL	2095	FWL	40.29933	-104.68891	1.8	4794	SENW
10	HSR-HINDE 7-20	1785	FNL	1823	FEL	40.30026	-104.68416	1.7	4796	SWNE
11	HSR-CHARLTON 8-20	1859	FNL	793	FEL	40.30007	-104.68047	1.8	4799	SENE
12	SHABLE 24-20	1421	FNL	1079	FEL	40.30127	-104.68147	1.9	4791	SENE
13	SHABLE 25-20	1407	FNL	1089	FEL	40.30131	-104.68150	2.0	4790	SENE
14	SHABLE 17-20	1381	FNL	1108	FEL	40.30138	-104.68157	1.9	4790	SENE
20	PESCHEL 23-20B	1856	FSL	1886	FWL	40.29574	-104.68974	1.6	4823	NESW
26	PESCHEL 33-20	1623	FSL	1749	FEL	40.29511	-104.68401	1.7	4842	NWSE
27	PESCHEL 43-20	2072	FSL	628	FEL	40.29636	-104.67996	1.9	4830	NESE
28	PESCHEL 23-20	1830	FSL	1980	FWL	40.29557	-104.68923	NA	4418	NESW

NOTE: THE ABANDONED WELL DATA SHOWN IN RED ABOVE WAS OBTAINED FROM COGCC SCOUT CARDS.

DATE: 7/30/2014
PROJECT#: 2014132