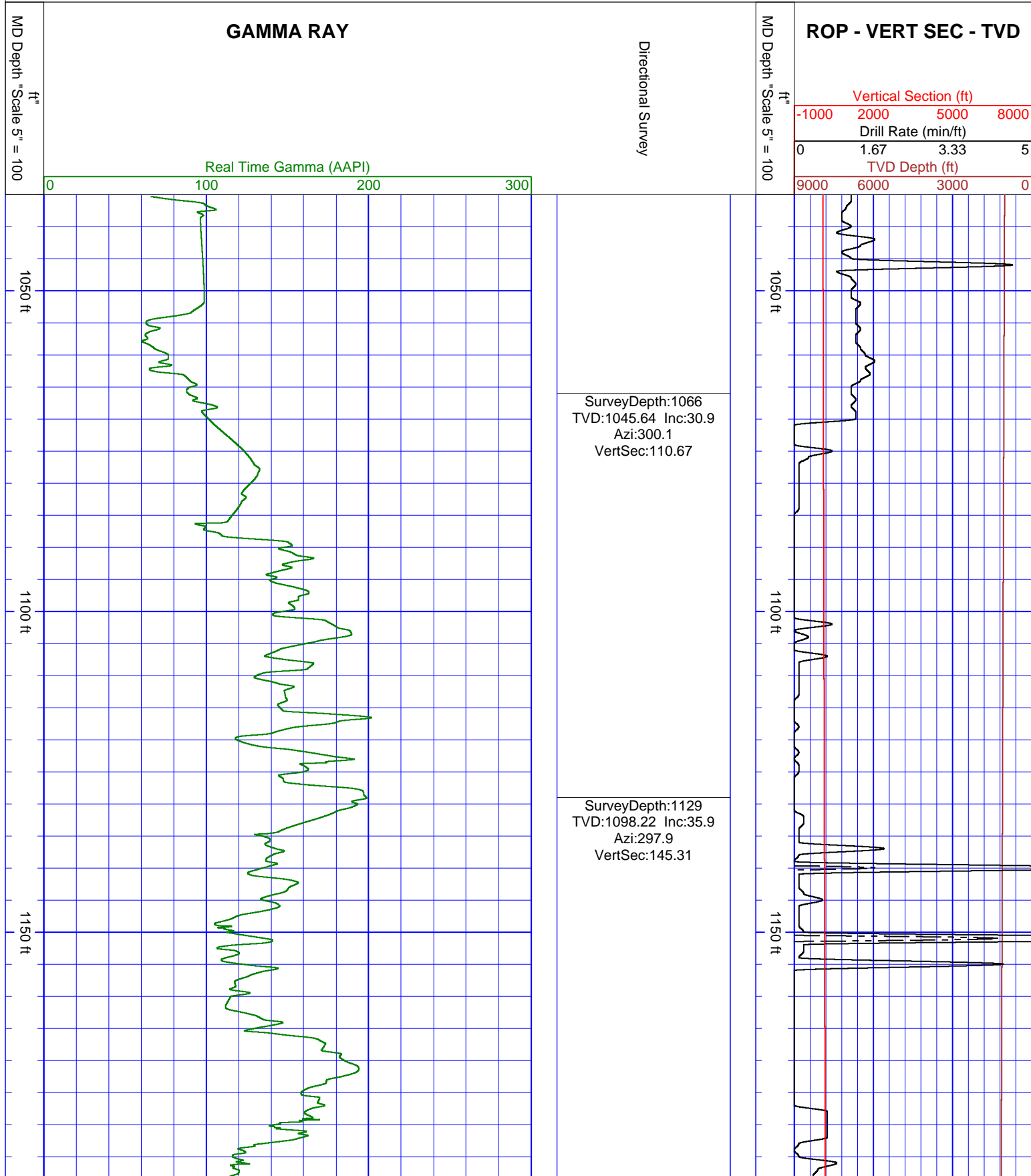
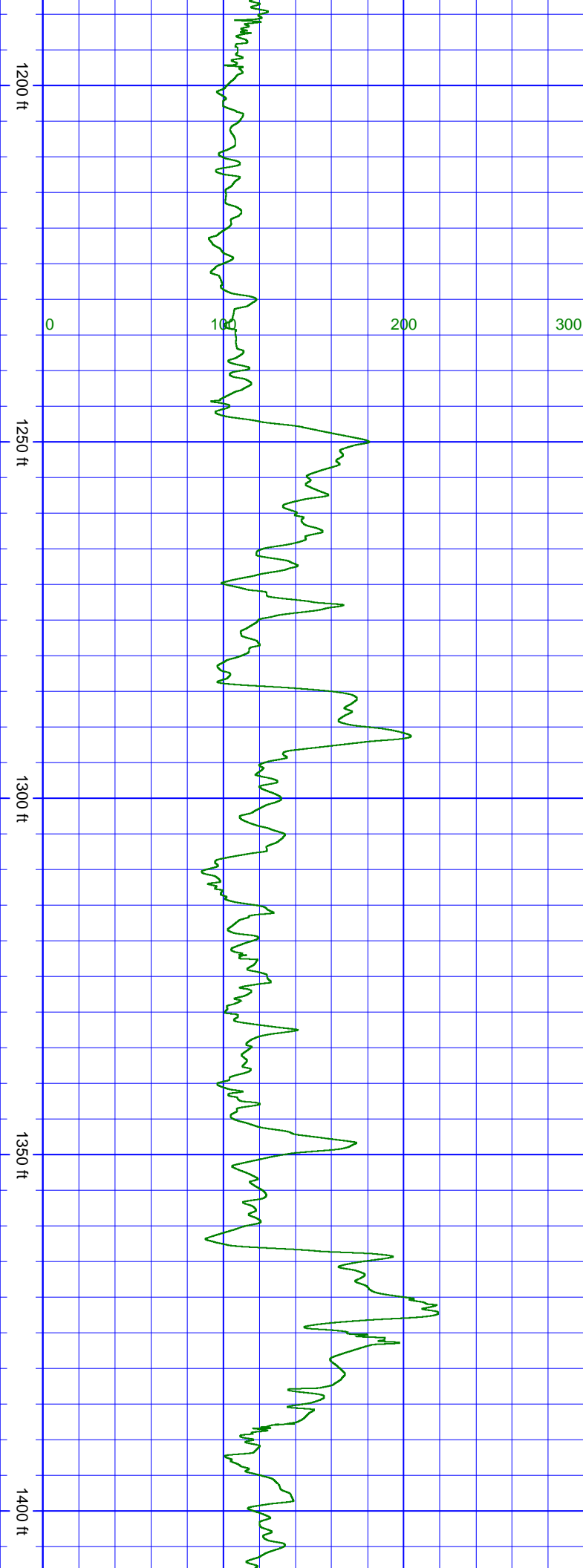




Oil Company: Gunnison Energy Corporation
Well Name: DGU 1289 Federal 18CS1
Surface Location: Gunnison County
Bit Run: 3
Log Depth Start: 1035.00 ft Log Depth End: 4106.00 ft
Data Depth Start: 1035.00 ft Data Depth End: 4100.00 ft

Interpretations of this data by Cathedral Energy Services will be of best judgment as to correctness. Cathedral Energy Services cannot and does not guarantee the accuracy or correctness of interpretations or any surveys derived therefrom. Cathedral Energy Services makes no warranties of performance, results, fitness or suitability for any particular purposes with respect to the goods being furnished under the terms and conditions. Cathedral Energy Services warrants that the equipment furnished will conform to Cathedral Energy Services published specifications in effect at the time and be in good working order.



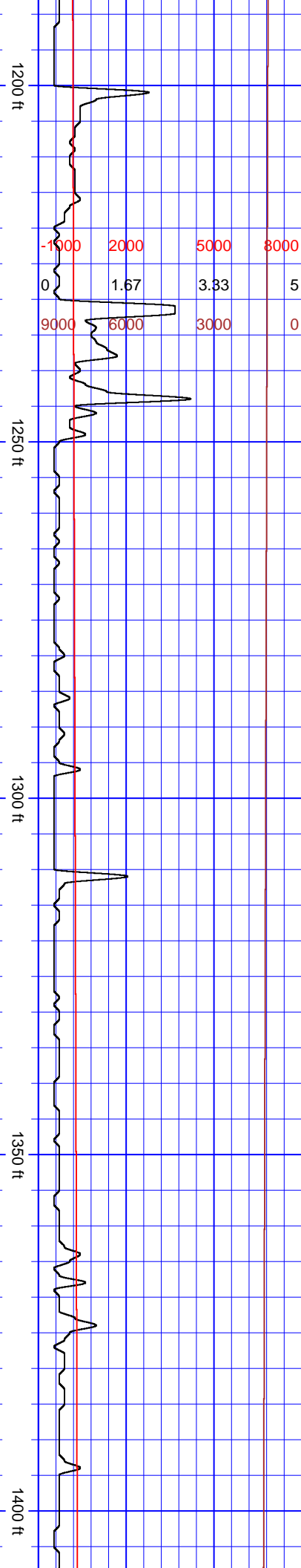


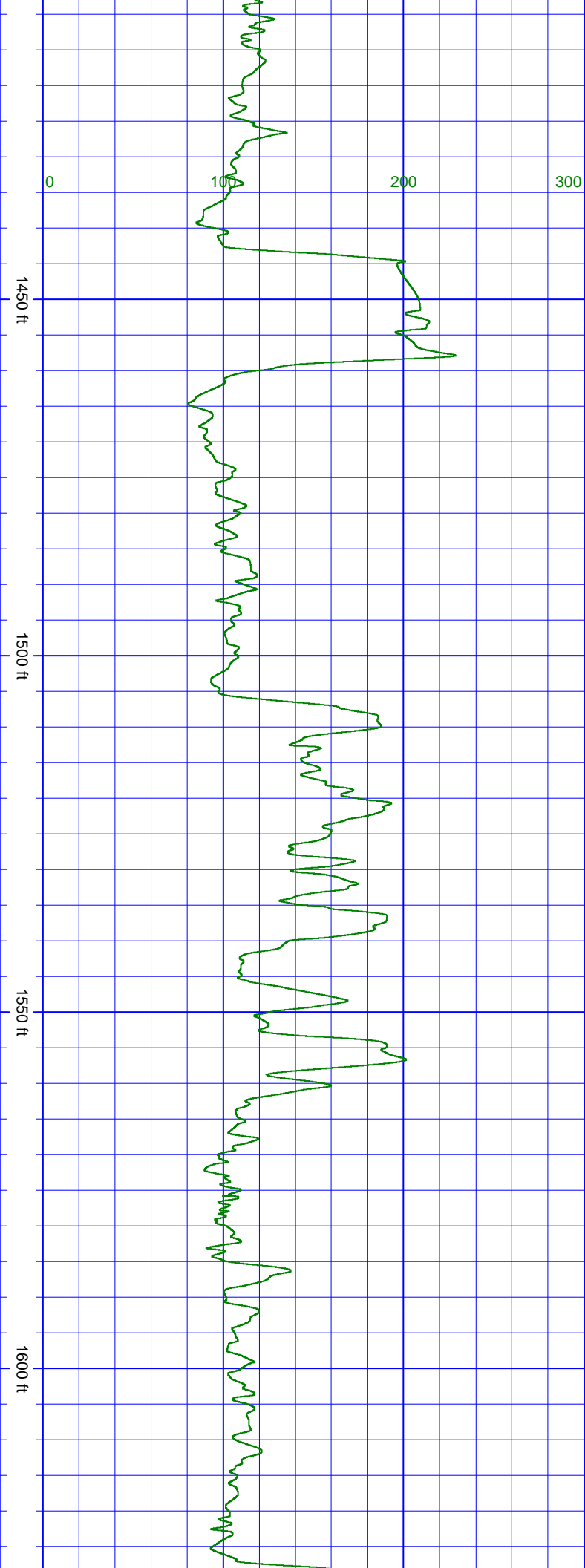
SurveyDepth:1192
TVD:1147.51 Inc:41.1
Azi:297.9
VertSec:184.52

SurveyDepth:1255
TVD:1192.92 Inc:46.6
Azi:298.9
VertSec:228.13

SurveyDepth:1319
TVD:1236.65 Inc:47.2
Azi:298.7
VertSec:274.84

SurveyDepth:1382
TVD:1279.5 Inc:47.1
Azi:298 VertSec:321.02

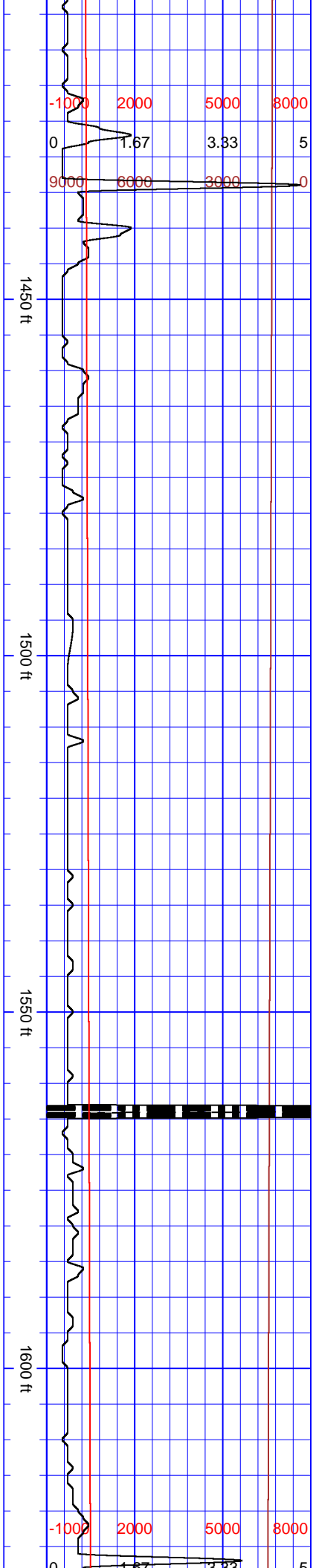


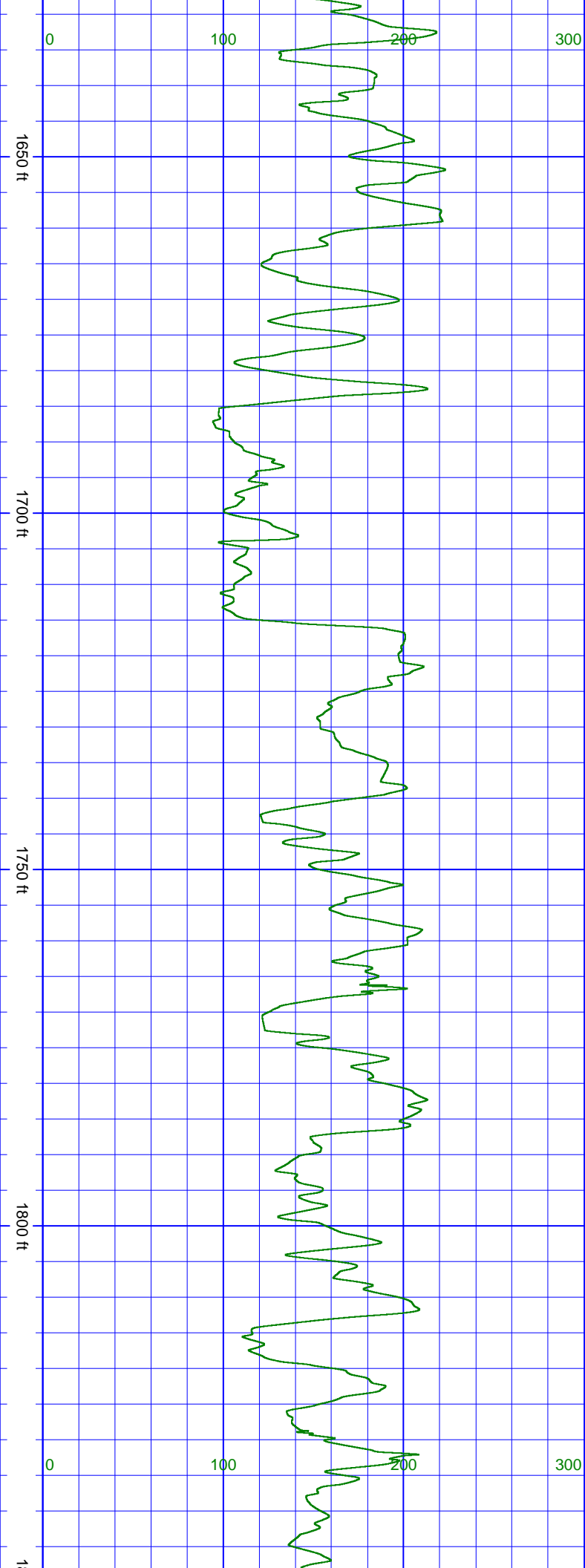


SurveyDepth:1445
TVD:1322.7 Inc:46.3
Azi:299.1
VertSec:366.86

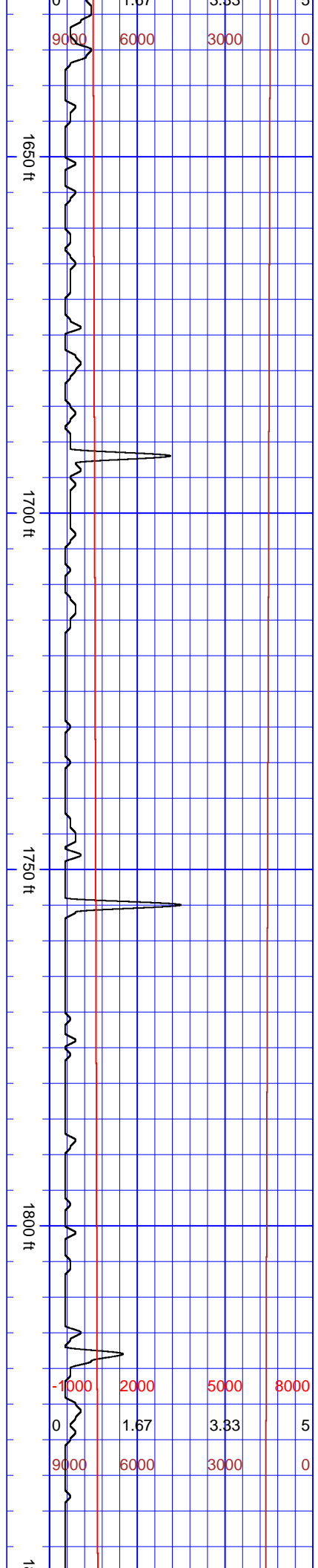
SurveyDepth:1508
TVD:1366.47 Inc:45.7
Azi:299.4
VertSec:412.15

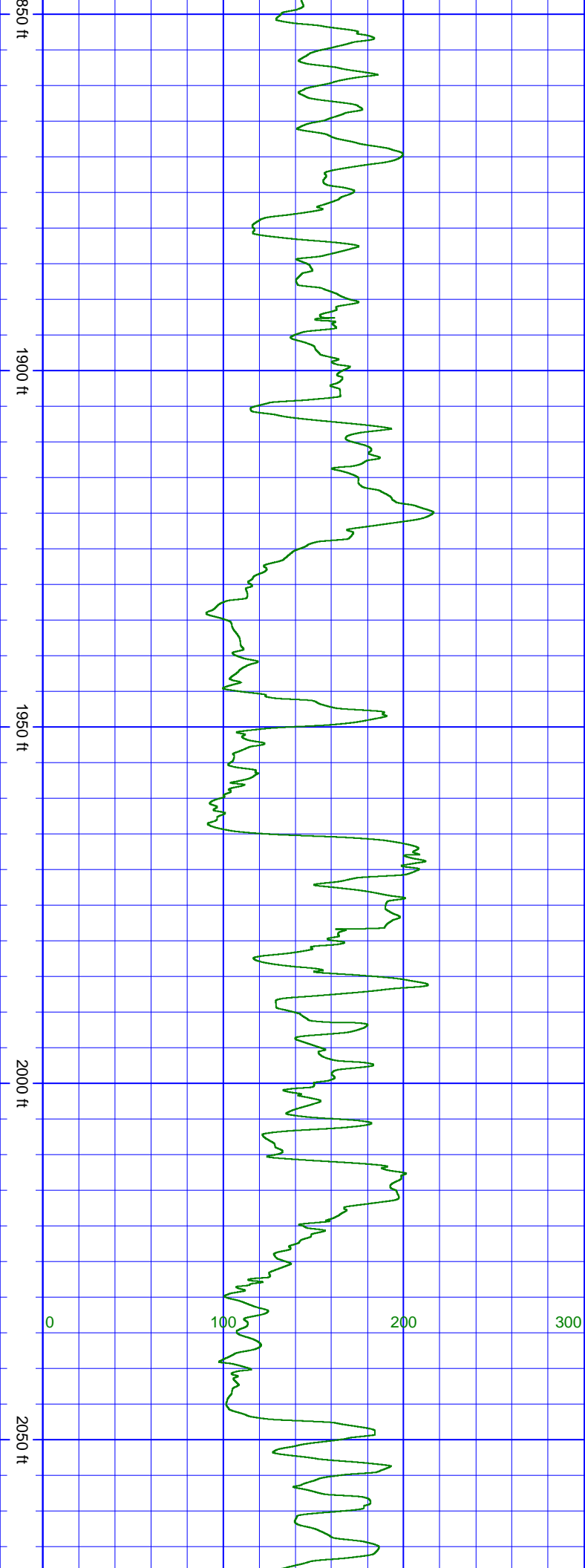
SurveyDepth:1571
TVD:1410.35 Inc:46
Azi:298.3
VertSec:457.33





SurveyDepth:1635 TVD:1454.73 Inc:46.2 Azi:297.8 VertSec:503.44	
SurveyDepth:1698 TVD:1498.45 Inc:45.9 Azi:297.1 VertSec:548.79	
SurveyDepth:1761 TVD:1542.45 Inc:45.5 Azi:295.7 VertSec:593.88	
SurveyDepth:1824 TVD:1586.81 Inc:45 Azi:294.5 VertSec:638.59	

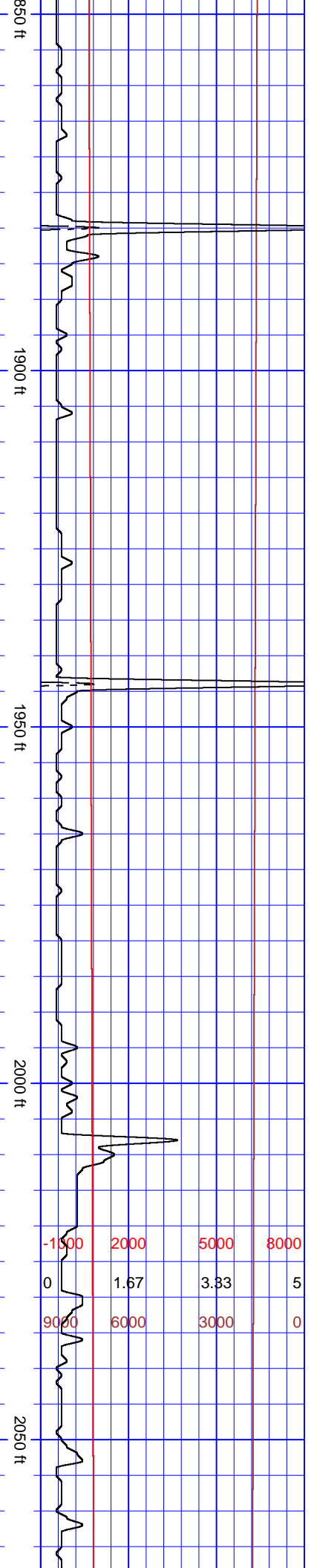




SurveyDepth:1888
TVD:1632.14 Inc:44.8
Azi:294.7
VertSec:683.72

SurveyDepth:1951
TVD:1676.84 Inc:44.8
Azi:293.8
VertSec:728.05

SurveyDepth:2014
TVD:1721.31 Inc:45.4
Azi:295.1
VertSec:772.62



2100 ft

2150 ft

2200 ft

2250 ft

0 100 200 300

SurveyDepth:2078
TVD:1766.05 Inc:45.9
Azi:296.1
VertSec:818.37

SurveyDepth:2141
TVD:1809.82 Inc:46.1
Azi:295.6
VertSec:863.67

SurveyDepth:2204
TVD:1853.46 Inc:46.2
Azi:295.2
VertSec:909.09

SurveyDepth:2267
TVD:1896.99 Inc:46.4
Azi:294.7 VertSec:954.6

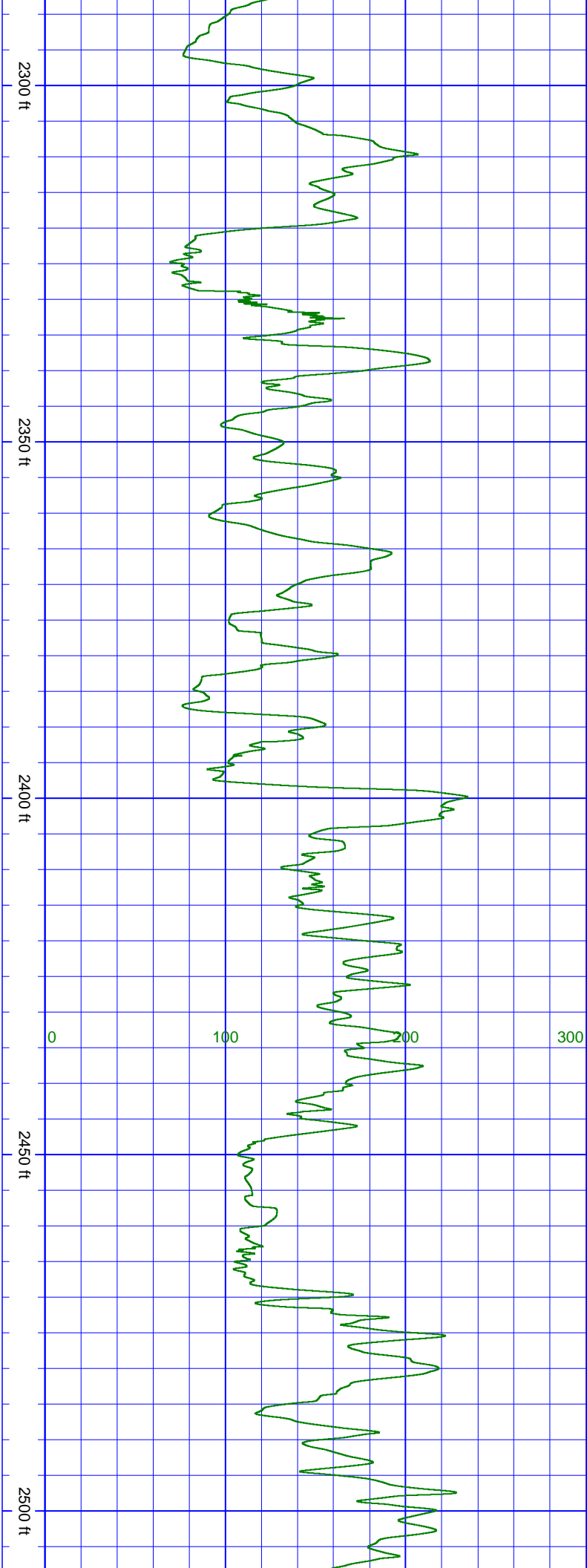
2100 ft

2150 ft

2200 ft

2250 ft

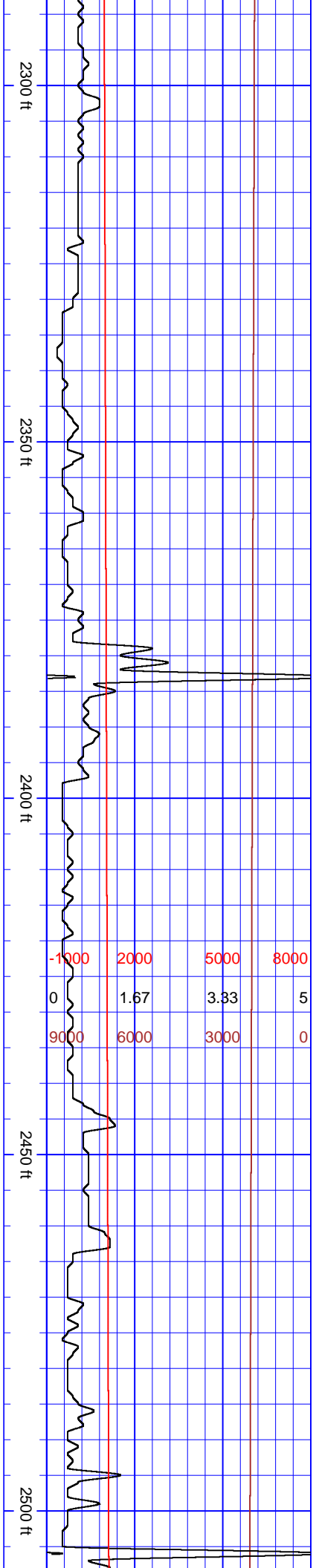
-1000	2000	5000	8000
0	1.67	3.33	5
9000	6000	3000	0

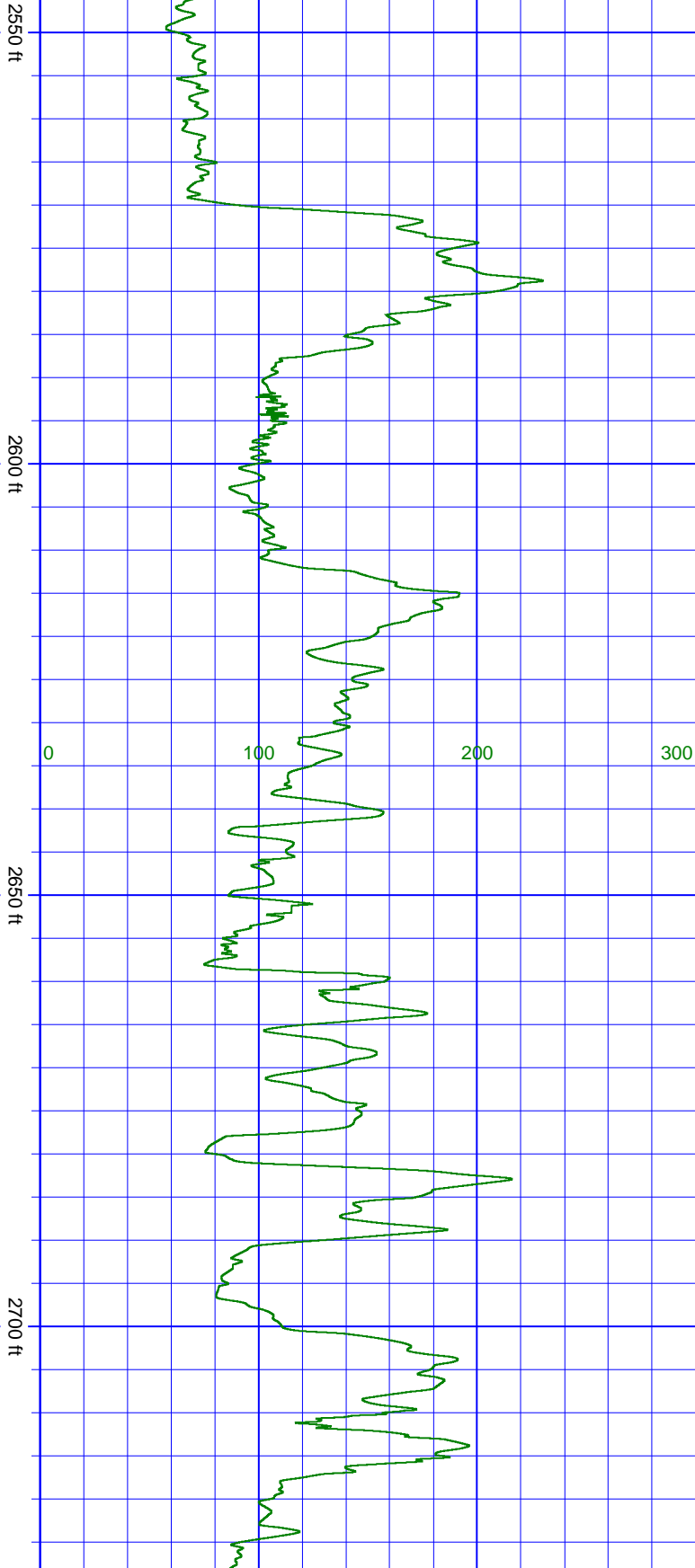


SurveyDepth:2324
TVD:1936.33 Inc:46.3
Azi:294.5 VertSec:995.8

SurveyDepth:2388
TVD:1981.15 Inc:44.8
Azi:293.2
VertSec:1041.41

SurveyDepth:2451
TVD:2025.93 Inc:44.6
Azi:293.9
VertSec:1085.63



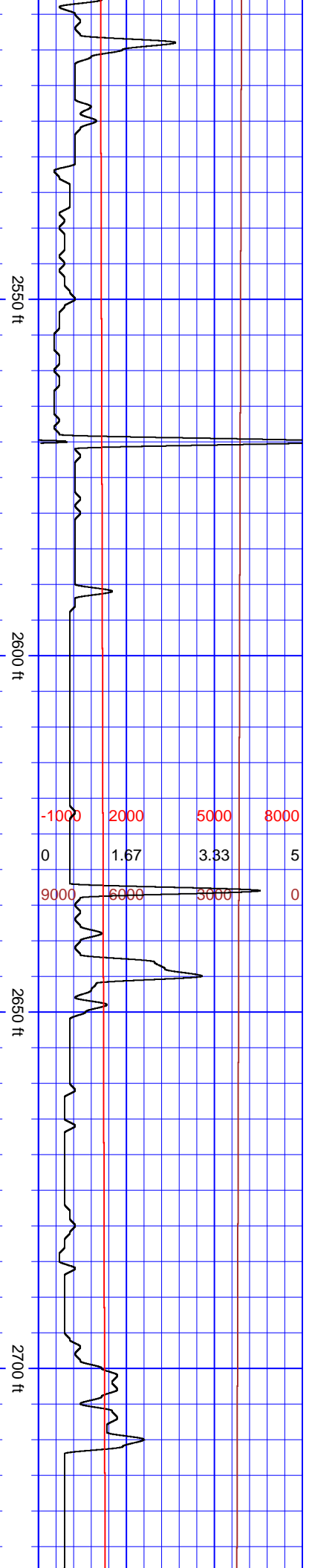


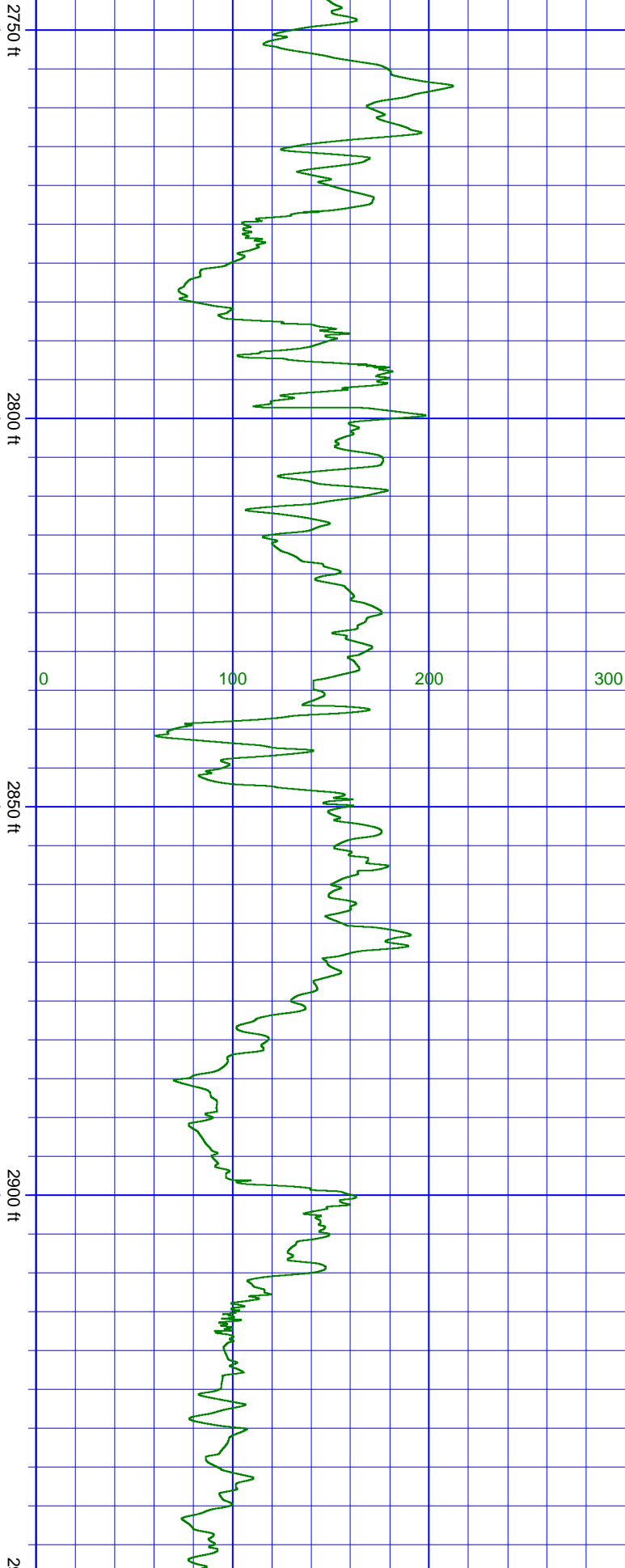
SurveyDepth:2514
TVD:2070.98 Inc:44.1
Azi:295.9
VertSec:1129.63

SurveyDepth:2577
TVD:2116 Inc:44.7
Azi:297.8
VertSec:1173.7

SurveyDepth:2641
TVD:2161.49 Inc:44.7
Azi:298.4
VertSec:1218.72

SurveyDepth:2704
TVD:2206.5 Inc:44.1
Azi:298.9
VertSec:1262.78

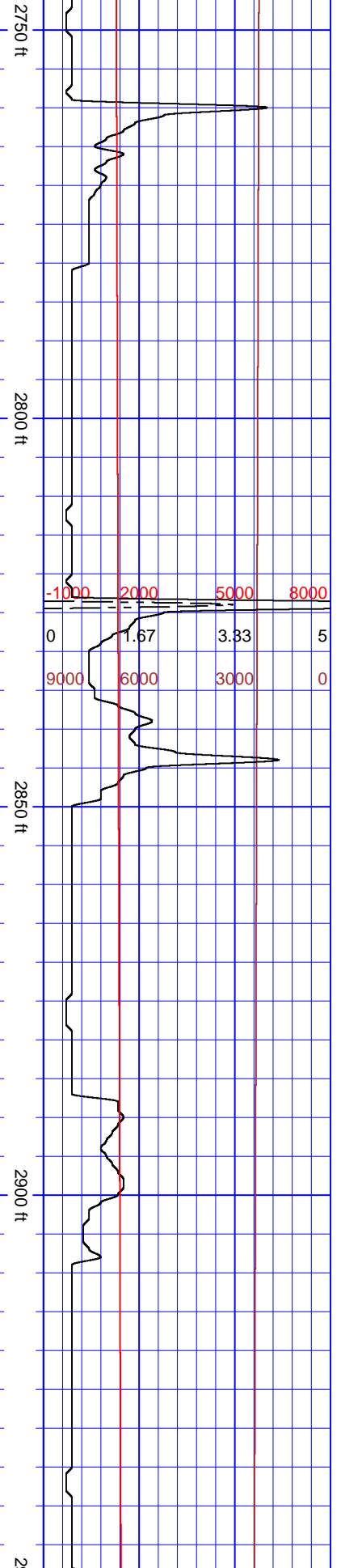




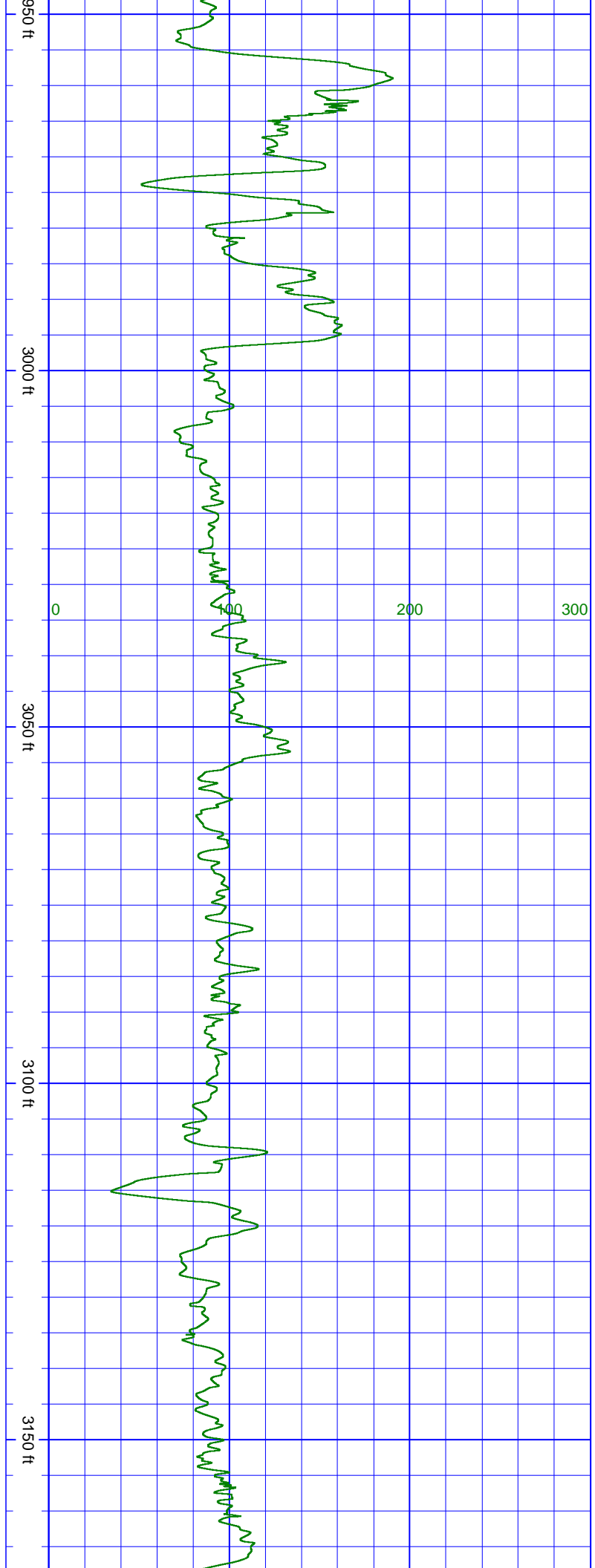
SurveyDepth:2767
TVD:2251.55 Inc:44.6
Azi:300.2
VertSec:1306.78

SurveyDepth:2830
TVD:2296.17 Inc:45.2
Azi:300.5
VertSec:1351.18

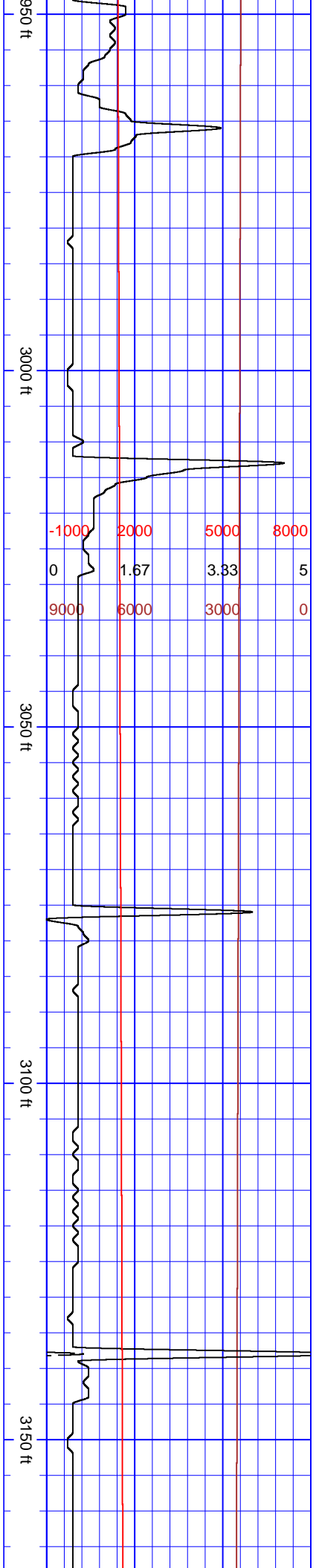
SurveyDepth:2894
TVD:2340.83 Inc:46.3
Azi:300.4
VertSec:1396.95

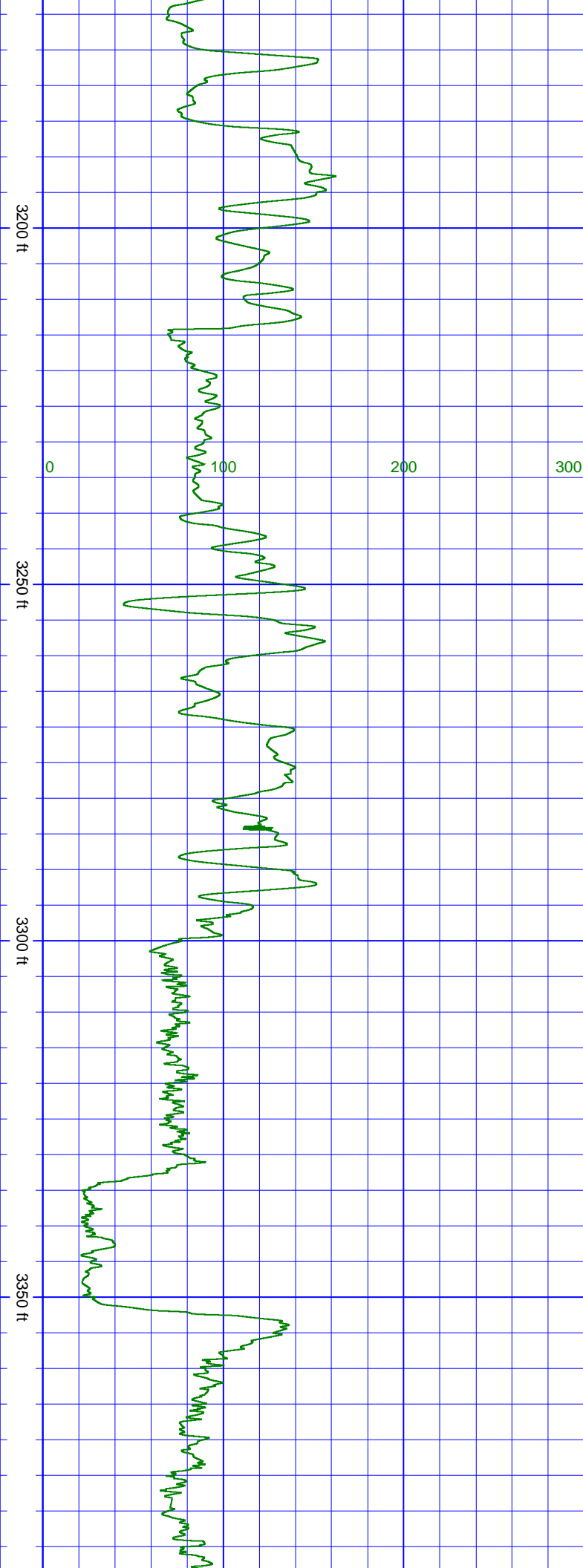


	-1000	2000	5000	8000
0	1.67	3.33	5	
9000	6000	3000	0	

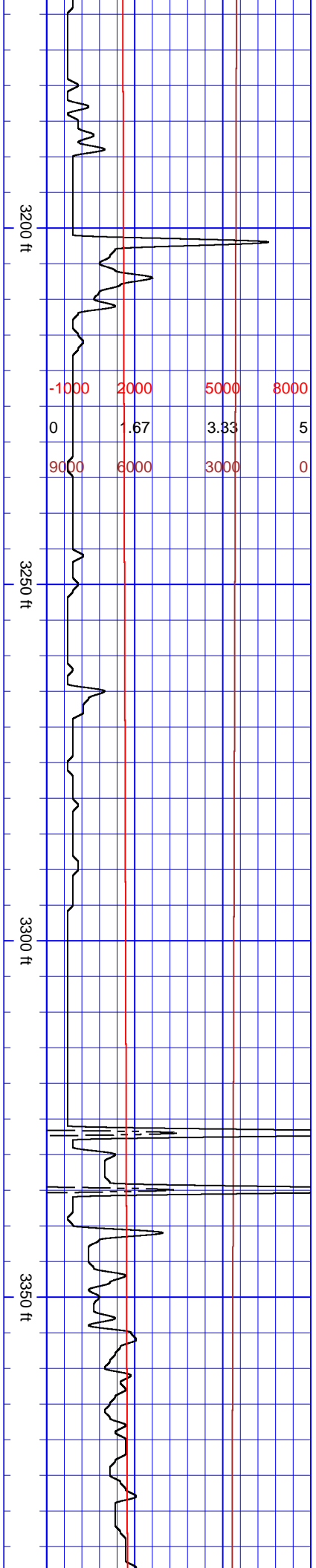


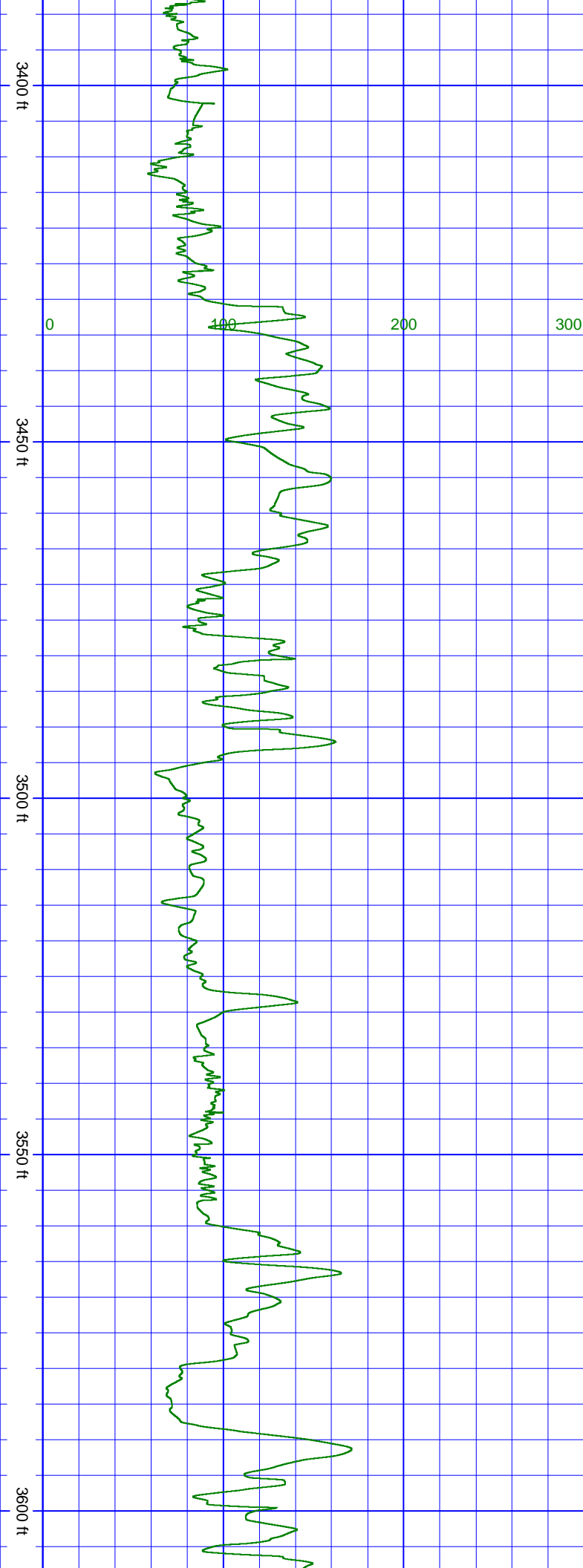
SurveyDepth:2957 TVD:2383.68 Inc:48 Azi:299.7 VertSec:1443.08	SurveyDepth:3020 TVD:2425.51 Inc:48.8 Azi:297.9 VertSec:1490.16	SurveyDepth:3083 TVD:2467 Inc:48.8 Azi:296.7 VertSec:1537.56	SurveyDepth:3146 TVD:2508.63 Inc:48.5 Azi:296.5 VertSec:1584.86
--	--	---	--





SurveyDepth:3210 TVD:2551.37 Inc:47.7 Azi:295.1 VertSec:1632.48	SurveyDepth:3273 TVD:2594.29 Inc:46.4 Azi:293.3 VertSec:1678.52	SurveyDepth:3336 TVD:2638.34 Inc:45.4 Azi:293.1 VertSec:1723.46
--	--	--



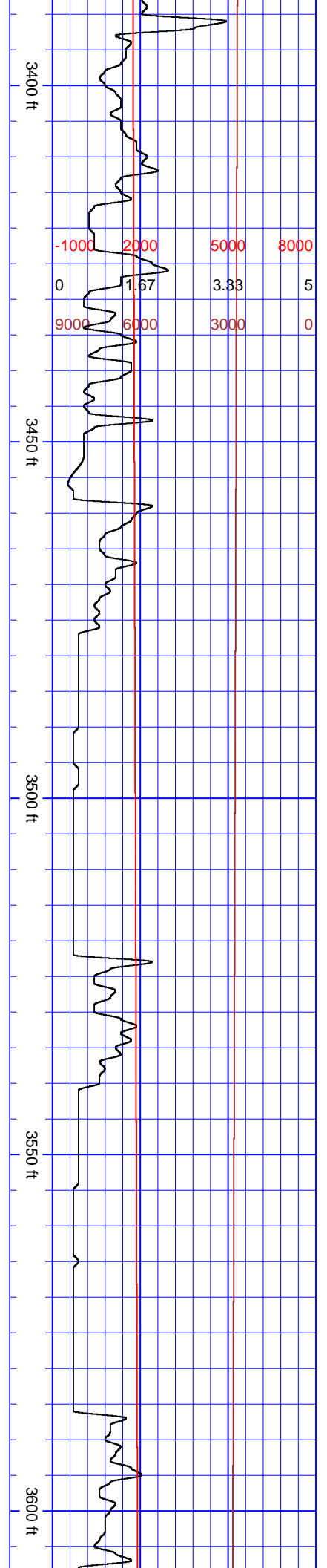


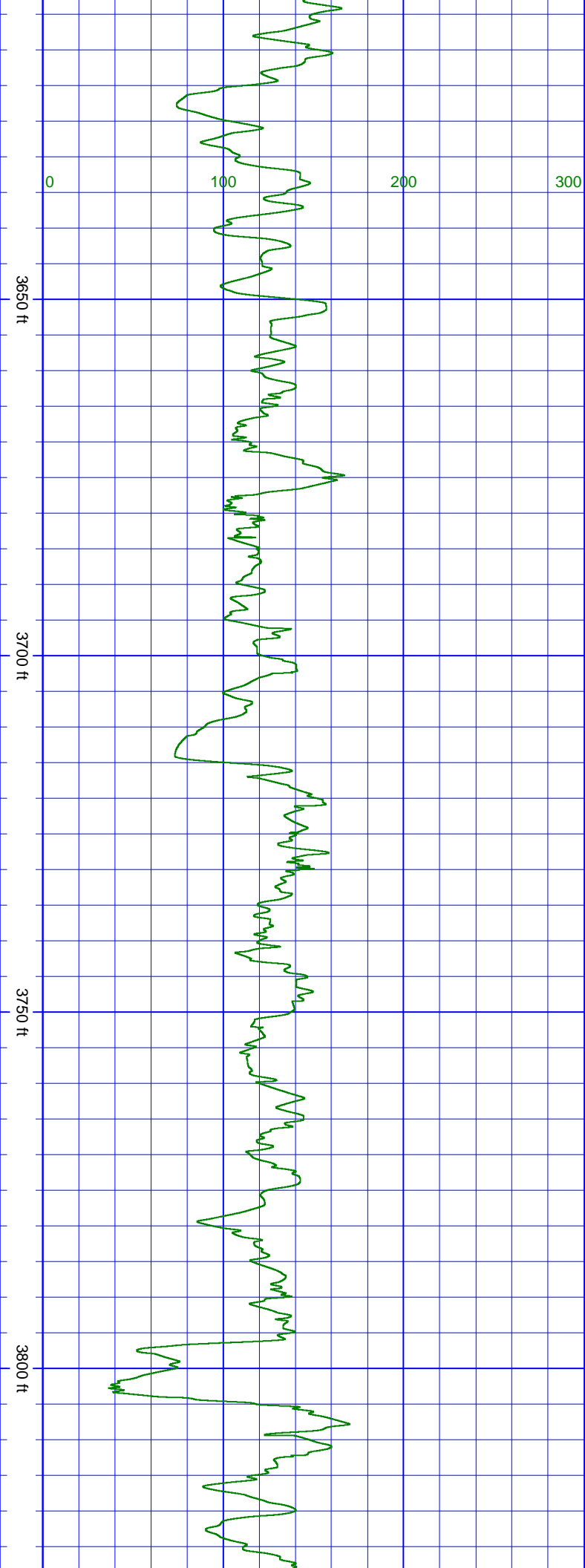
SurveyDepth:3400
TVD:2683.59 Inc:44.1
Azi:295.8
VertSec:1768.65

SurveyDepth:3467
TVD:2731.71 Inc:44.1
Azi:296.9
VertSec:1815.27

SurveyDepth:3530
TVD:2776.68 Inc:44.8
Azi:296.7
VertSec:1859.39

SurveyDepth:3593
TVD:2821.11 Inc:45.5
Azi:295.5
VertSec:1904.04

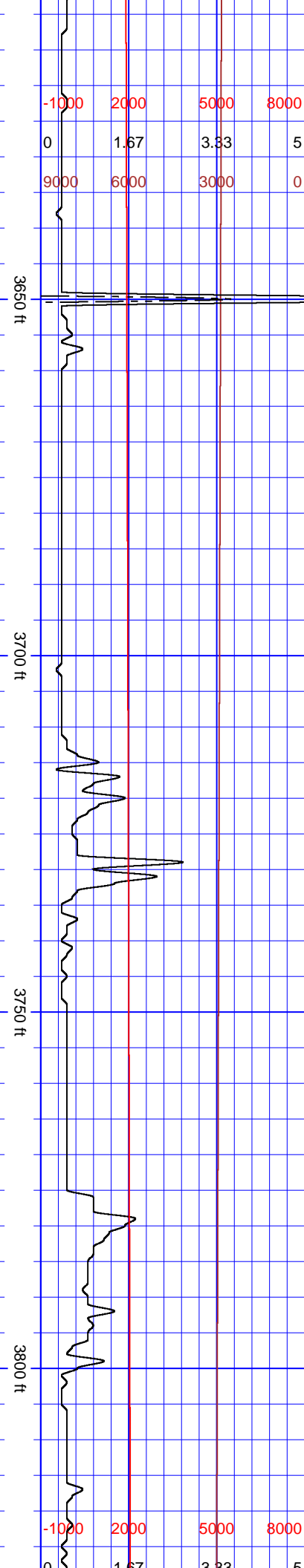


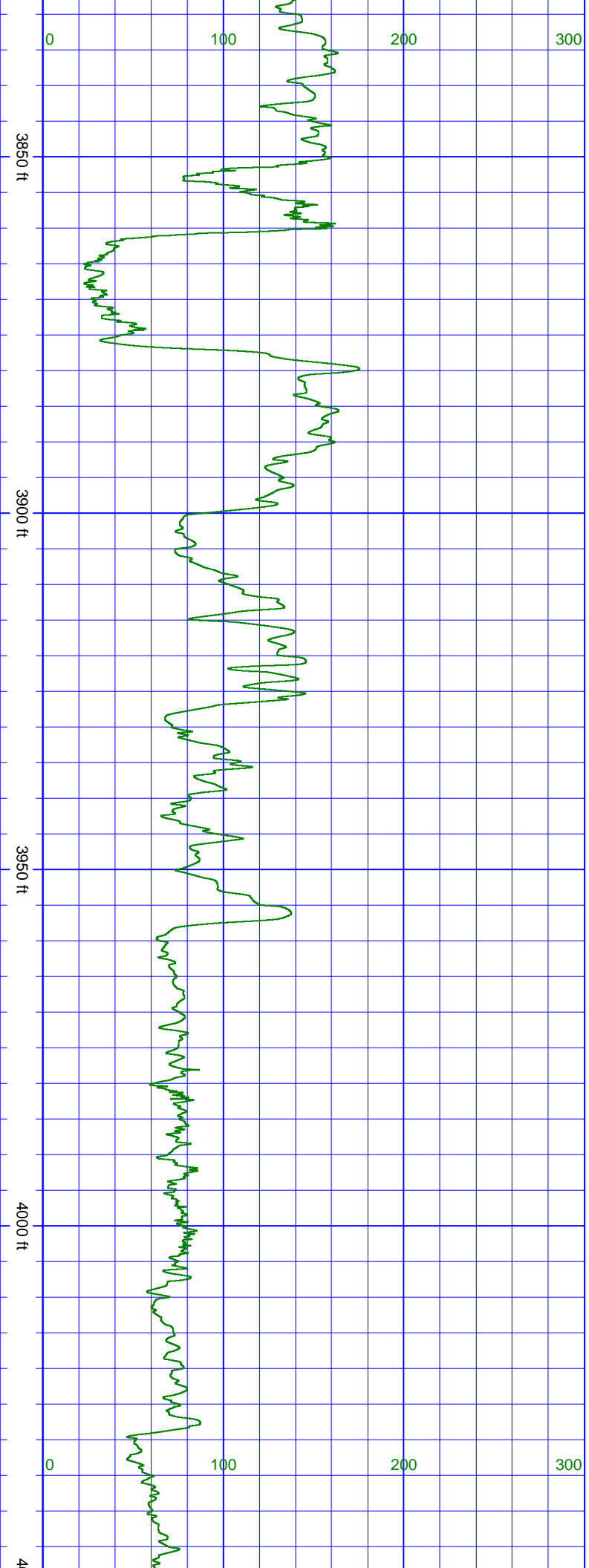


SurveyDepth:3657
TVD:2866.48 Inc:44.2
Azi:294.4
VertSec:1949.14

SurveyDepth:3720
TVD:2912.37 Inc:42.3
Azi:294.5
VertSec:1992.26

SurveyDepth:3783
TVD:2959.44 Inc:41
Azi:294.5
VertSec:2034.08



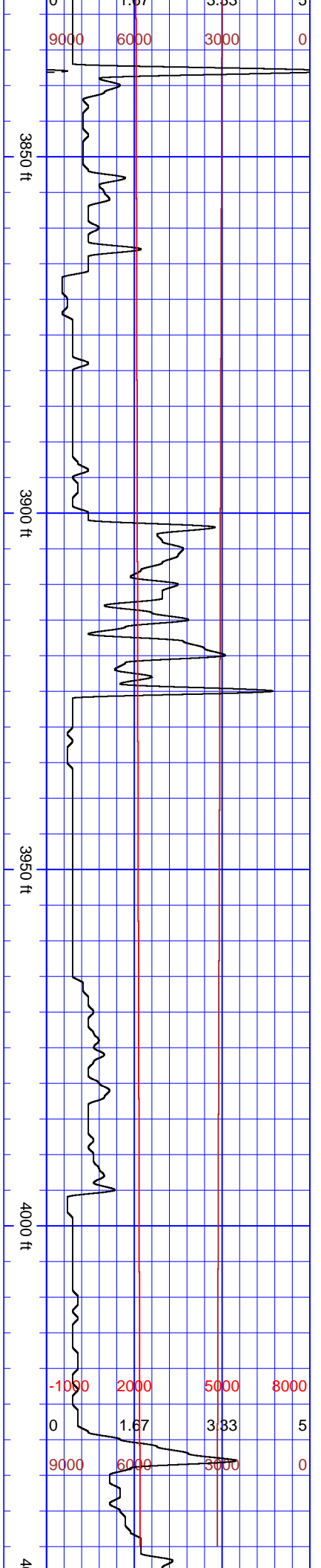


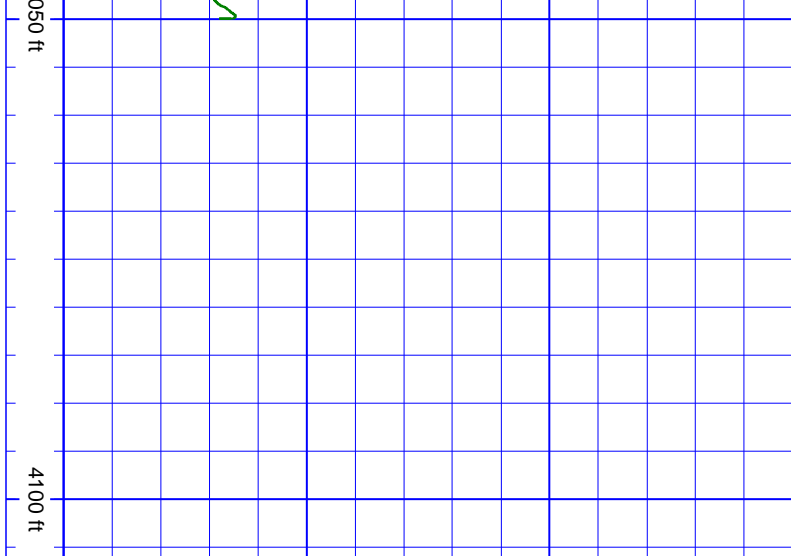
SurveyDepth:3846
TVD:3007.49 Inc:39.6
Azi:295.4
VertSec:2074.79

SurveyDepth:3910
TVD:3056.84 Inc:39.5
Azi:296 VertSec:2115.53

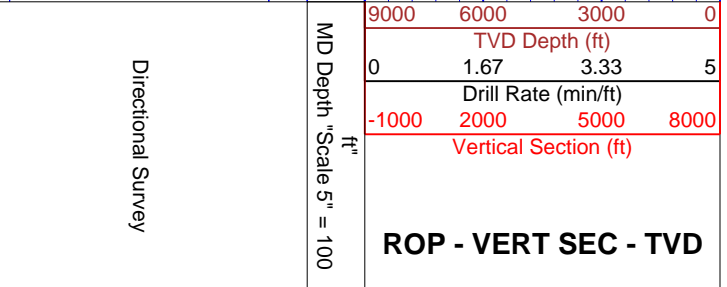
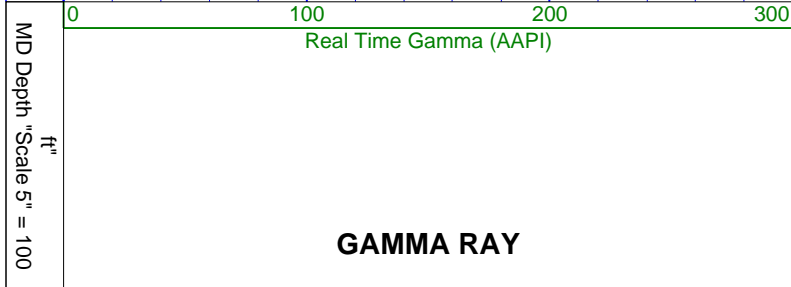
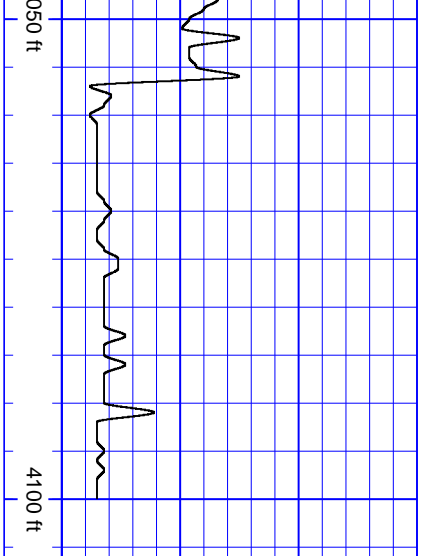
SurveyDepth:3973
TVD:3105.06 Inc:40.6
Azi:297.3
VertSec:2156.06

SurveyDepth:4036
TVD:3152.03 Inc:43
Azi:298.9
VertSec:2198.04
SurveyDepth:4045





TVD:3158.58 Inc:43.6
 Azi:299.3
 VertSec:2204.21



Directional Survey



CATHEDRAL

Oil Company: Gunnison Energy Corporation
 Well Name: DGU 1289 Federal 18CS1
 Surface Location: Gunnison County
 Bit Run: 3
 Log Depth Start: 1035.00 ft Log Depth End: 4106.00 ft
 Data Depth Start: 1035.00 ft Data Depth End: 4100.00 ft