

# EXTRACTION OIL & GAS

Location: COLORADO Slot: SLOT#06 RANCHO WATER VALLEY 9(643'FNL & 264'FEL,SEC.04)  
Field: WELD COUNTY (NAD83/TRUE NORTH) Well: RANCHO WATER VALLEY 9  
Facility: SEC.04-T05N-R67W Wellbore: RANCHO WATER VALLEY 9 PWB

Plot reference wellpath is RANCHO WATER VALLEY 9 (REV-B.0) PWP

True vertical depths are referenced to RIG (RKB)	Grid System: NAD83 / Lambert Colorado SP, Northern Zone (501), US feet
Measured depths are referenced to RIG (RKB)	North Reference: True north
RIG (RKB) to Mean Sea Level: 4799 feet	Scale: True distance
Mean Sea Level to Mud line (At Slot: SLOT#06 RANCHO WATER VALLEY 9(643'FNL & 264'FEL,SEC.04)): 0 feet	Depths are in feet
Coordinates are in feet referenced to Slot	Created by: painseer on 7/31/2014

## Location Information

Facility Name				Grid East (US ft)	Grid North (US ft)	Latitude	Longitude
SEC.04-T05N-R67W				3170424.561	1402077.673	40°26'07.764"N	104°53'15.936"W
Slot	Local N (ft)	Local E (ft)	Grid East (US ft)	Grid North (US ft)	Latitude	Longitude	
SLOT#06 RANCHO WATER VALLEY 9(643FNL & 264FEL,SEC.04)	-425.52	-76.00	3170351.505	1401651.657	40°26'03.559"N	104°53'16.919"W	
RIG (RKB) to Mud line (At Slot: SLOT#06 RANCHO WATER VALLEY 9(643FNL & 264FEL,SEC.04))						4799ft	
Mean Sea Level to Mud line (At Slot: SLOT#06 RANCHO WATER VALLEY 9(643FNL & 264FEL,SEC.04))						0ft	
RIG (RKB) to Mean Sea Level						4799ft	

## Targets

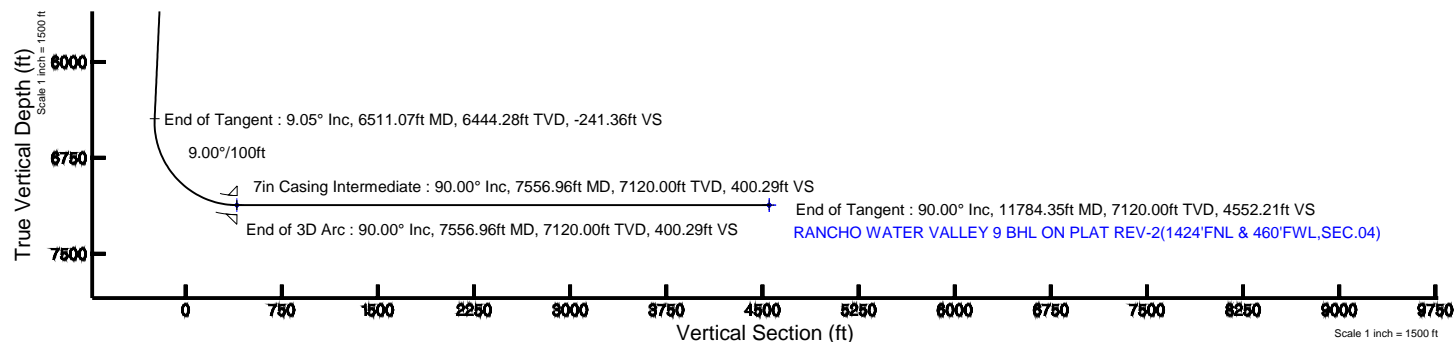
Name	MD (ft)	TVD (ft)	Local N (ft)	Local E (ft)	Grid East (US ft)	Grid North (US ft)	Latitude	Longitude
RANCHO WATER VALLEY PAD N1/2 SECTION 04		0.00	-28.05	-0.28	3170351.42	1401623.60	40°28'03.282"N	104°53'16.922"W
RWV PAD N1/2 SECTION 04 HARDLINES(460'SETBACKS)		6780.00	-28.05	-0.28	3170351.42	1401623.60	40°28'03.282"N	104°53'16.922"W
RANCHO WATER VALLEY 9 BHL ON PLAT REV-1(143'FNL & 460'FWL,SEC.04)		7120.00	-809.10	-4481.24	3165876.14	1400811.68	40°25'55.560"N	104°54'14.868"W
RANCHO WATER VALLEY 9 BHL ON PLAT REV-2(1424'FNL & 460'FWL,SEC.04)		11784.35	-800.72	-4481.24	3165876.08	1400820.08	40°25'55.643"N	104°54'14.868"W
RANCHO WATER VALLEY 9 LANDING		7556.96	-863.22	-254.17	3170103.24	1400796.73	40°25'55.128"N	104°53'20.206"W

## Survey Program

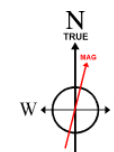
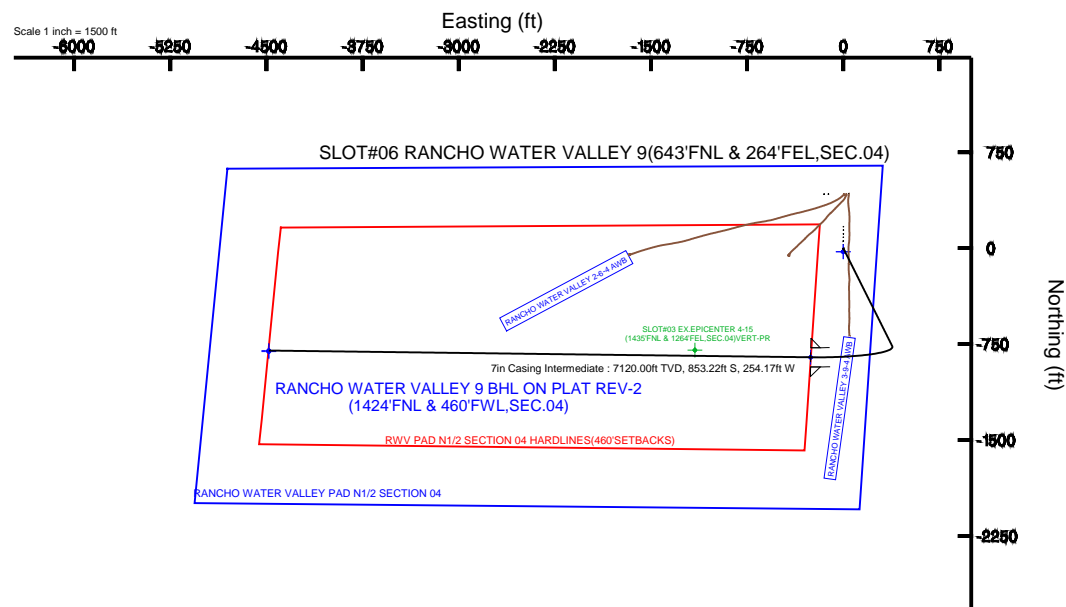
Start MD (ft)	End MD (ft)	Tool	Model	Log Name/Comment	Wellbore
24.00	13000.00	NaviTrak	NaviTrak (Standard)		RANCHO WATER VALLEY 9 PWB

## Well Profile Data

Design Comment	MD (ft)	Inc (°)	Az (°)	TVD (ft)	Local N (ft)	Local E (ft)	DLS (°/100ft)	VS (ft)
Tie On	24.00	0.000	153.480	24.00	0.00	0.00	0.00	0.00
End of Tangent	850.00	0.000	153.480	850.00	0.00	0.00	0.00	0.00
End of Build	1302.73	9.055	153.480	1300.85	-31.94	15.94	2.00	-10.07
End of Tangent	6511.07	9.055	153.480	6444.28	-765.37	381.94	0.00	-241.36
End of 3D Arc	7556.96	90.000	270.712	7120.00	-853.22	-254.17	9.00	400.29
End of Tangent	11784.35	90.000	270.712	7120.00	-800.72	-4481.24	0.00	4552.21



Azimuth 259.87° with reference 0.00 N, 0.00 E



BGGM (1945.0 to 2016.0) Dip: 66.95° Field: 52759.7 nT  
Magnetic North is 8.61 degrees East of True North (at 7/2/2014)

To correct azimuth from Magnetic to True add 8.61 degrees



# Planned Wellpath Report

## RANCHO WATER VALLEY 9 (REV-B.0) PWP

Page 1 of 7



### REFERENCE WELLPATH IDENTIFICATION

Operator	EXTRACTION OIL & GAS	Slot	SLOT#06 RANCHO WATER VALLEY 9(643'FNL & 264'FEL,SEC.04)
Area	COLORADO	Well	RANCHO WATER VALLEY 9
Field	WELD COUNTY (NAD83/TRUE NORTH)	Wellbore	RANCHO WATER VALLEY 9 PWB
Facility	SEC.04-T05N-R67W		

### REPORT SETUP INFORMATION

Projection System	NAD83 / Lambert Colorado SP, Northern Zone (501), US feet	Software System	WellArchitect® 4.0.0
North Reference	True	User	Painsetr
Scale	0.999962	Report Generated	7/31/2014 at 9:37:10 AM
Convergence at slot	n/a	Database/Source file	WA_Denver/RANCHO_WATER_VALLEY_9_PWB.xml

### WELLPATH LOCATION

	Local coordinates		Grid coordinates		Geographic coordinates	
	North[ft]	East[ft]	Easting[US ft]	Northing[US ft]	Latitude	Longitude
Slot Location	-425.52	-76.00	3170351.51	1401651.66	40°26'03.559"N	104°53'16.919"W
Facility Reference Pt			3170424.56	1402077.67	40°26'07.764"N	104°53'15.936"W
Field Reference Pt			3185481.27	1419166.81	40°28'55.560"N	104°49'59.556"W

### WELLPATH DATUM

Calculation method	Minimum curvature	RIG (RKB) to Facility Vertical Datum	4799.00ft
Horizontal Reference Pt	Slot	RIG (RKB) to Mean Sea Level	4799.00ft
Vertical Reference Pt	RIG (RKB)	RIG (RKB) to Mud Line at Slot (SLOT#06 RANCHO WATER VALLEY 9(643'FNL & 264'FEL,SEC.04))	4799.00ft
MD Reference Pt	RIG (RKB)	Section Origin	N 0.00, E 0.00 ft
Field Vertical Reference	Mean Sea Level	Section Azimuth	259.87°



# Planned Wellpath Report

## RANCHO WATER VALLEY 9 (REV-B.0) PWP

Page 2 of 7



REFERENCE WELLPATH IDENTIFICATION			
Operator	EXTRACTION OIL & GAS	Slot	SLOT#06 RANCHO WATER VALLEY 9(643'FNL & 264'FEL,SEC.04)
Area	COLORADO	Well	RANCHO WATER VALLEY 9
Field	WELD COUNTY (NAD83/TRUE NORTH)	Wellbore	RANCHO WATER VALLEY 9 PWB
Facility	SEC.04-T05N-R67W		

WELLPATH DATA (124 stations) † = interpolated/extrapolated station								
MD [ft]	Inclination [°]	Azimuth [°]	TVD [ft]	Vert Sect [ft]	North [ft]	East [ft]	DLS [°/100ft]	Comments
0.00†	0.000	153.480	0.00	0.00	0.00	0.00	0.00	
24.00	0.000	153.480	24.00	0.00	0.00	0.00	0.00	Tie On
124.00†	0.000	153.480	124.00	0.00	0.00	0.00	0.00	
224.00†	0.000	153.480	224.00	0.00	0.00	0.00	0.00	
324.00†	0.000	153.480	324.00	0.00	0.00	0.00	0.00	
424.00†	0.000	153.480	424.00	0.00	0.00	0.00	0.00	
524.00†	0.000	153.480	524.00	0.00	0.00	0.00	0.00	
624.00†	0.000	153.480	624.00	0.00	0.00	0.00	0.00	
724.00†	0.000	153.480	724.00	0.00	0.00	0.00	0.00	
824.00†	0.000	153.480	824.00	0.00	0.00	0.00	0.00	
850.00	0.000	153.480	850.00	0.00	0.00	0.00	0.00	End of Tangent
924.00†	1.480	153.480	923.99	-0.27	-0.86	0.43	2.00	
1024.00†	3.480	153.480	1023.89	-1.49	-4.73	2.36	2.00	
1124.00†	5.480	153.480	1123.58	-3.69	-11.72	5.85	2.00	
1224.00†	7.480	153.480	1222.94	-6.88	-21.81	10.89	2.00	
1302.73	9.055	153.480	1300.85	-10.07	-31.94	15.94	2.00	End of Build
1324.00†	9.055	153.480	1321.85	-11.02	-34.94	17.43	0.00	
1424.00†	9.055	153.480	1420.61	-15.46	-49.02	24.46	0.00	
1524.00†	9.055	153.480	1519.36	-19.90	-63.10	31.49	0.00	
1624.00†	9.055	153.480	1618.11	-24.34	-77.18	38.52	0.00	
1724.00†	9.055	153.480	1716.87	-28.78	-91.26	45.54	0.00	
1824.00†	9.055	153.480	1815.62	-33.22	-105.35	52.57	0.00	
1924.00†	9.055	153.480	1914.38	-37.66	-119.43	59.60	0.00	
2024.00†	9.055	153.480	2013.13	-42.10	-133.51	66.62	0.00	
2124.00†	9.055	153.480	2111.88	-46.54	-147.59	73.65	0.00	
2224.00†	9.055	153.480	2210.64	-50.98	-161.67	80.68	0.00	
2324.00†	9.055	153.480	2309.39	-55.42	-175.75	87.71	0.00	
2424.00†	9.055	153.480	2408.15	-59.86	-189.84	94.73	0.00	
2524.00†	9.055	153.480	2506.90	-64.31	-203.92	101.76	0.00	
2624.00†	9.055	153.480	2605.65	-68.75	-218.00	108.79	0.00	



# Planned Wellpath Report

RANCHO WATER VALLEY 9 (REV-B.0) PWP

Page 3 of 7



REFERENCE WELLPATH IDENTIFICATION			
Operator	EXTRACTION OIL & GAS	Slot	SLOT#06 RANCHO WATER VALLEY 9(643'FNL & 264'FEL,SEC.04)
Area	COLORADO	Well	RANCHO WATER VALLEY 9
Field	WELD COUNTY (NAD83/TRUE NORTH)	Wellbore	RANCHO WATER VALLEY 9 PWB
Facility	SEC.04-T05N-R67W		

WELLPATH DATA (124 stations) † = interpolated/extrapolated station								
MD [ft]	Inclination [°]	Azimuth [°]	TVD [ft]	Vert Sect [ft]	North [ft]	East [ft]	DLS [°/100ft]	Comments
2724.00†	9.055	153.480	2704.41	-73.19	-232.08	115.81	0.00	
2824.00†	9.055	153.480	2803.16	-77.63	-246.16	122.84	0.00	
2924.00†	9.055	153.480	2901.91	-82.07	-260.25	129.87	0.00	
3024.00†	9.055	153.480	3000.67	-86.51	-274.33	136.90	0.00	
3124.00†	9.055	153.480	3099.42	-90.95	-288.41	143.92	0.00	
3224.00†	9.055	153.480	3198.18	-95.39	-302.49	150.95	0.00	
3324.00†	9.055	153.480	3296.93	-99.83	-316.57	157.98	0.00	
3424.00†	9.055	153.480	3395.68	-104.27	-330.65	165.00	0.00	
3524.00†	9.055	153.480	3494.44	-108.71	-344.74	172.03	0.00	
3624.00†	9.055	153.480	3593.19	-113.15	-358.82	179.06	0.00	
3724.00†	9.055	153.480	3691.95	-117.59	-372.90	186.09	0.00	
3824.00†	9.055	153.480	3790.70	-122.03	-386.98	193.11	0.00	
3924.00†	9.055	153.480	3889.45	-126.47	-401.06	200.14	0.00	
4024.00†	9.055	153.480	3988.21	-130.91	-415.14	207.17	0.00	
4124.00†	9.055	153.480	4086.96	-135.36	-429.23	214.19	0.00	
4224.00†	9.055	153.480	4185.71	-139.80	-443.31	221.22	0.00	
4324.00†	9.055	153.480	4284.47	-144.24	-457.39	228.25	0.00	
4424.00†	9.055	153.480	4383.22	-148.68	-471.47	235.28	0.00	
4524.00†	9.055	153.480	4481.98	-153.12	-485.55	242.30	0.00	
4624.00†	9.055	153.480	4580.73	-157.56	-499.63	249.33	0.00	
4724.00†	9.055	153.480	4679.48	-162.00	-513.72	256.36	0.00	
4824.00†	9.055	153.480	4778.24	-166.44	-527.80	263.38	0.00	
4924.00†	9.055	153.480	4876.99	-170.88	-541.88	270.41	0.00	
5024.00†	9.055	153.480	4975.75	-175.32	-555.96	277.44	0.00	
5124.00†	9.055	153.480	5074.50	-179.76	-570.04	284.47	0.00	
5224.00†	9.055	153.480	5173.25	-184.20	-584.13	291.49	0.00	
5324.00†	9.055	153.480	5272.01	-188.64	-598.21	298.52	0.00	
5424.00†	9.055	153.480	5370.76	-193.08	-612.29	305.55	0.00	
5524.00†	9.055	153.480	5469.51	-197.52	-626.37	312.57	0.00	
5624.00†	9.055	153.480	5568.27	-201.96	-640.45	319.60	0.00	



# Planned Wellpath Report

## RANCHO WATER VALLEY 9 (REV-B.0) PWP

Page 4 of 7



REFERENCE WELLPATH IDENTIFICATION			
Operator	EXTRACTION OIL & GAS	Slot	SLOT#06 RANCHO WATER VALLEY 9(643'FNL & 264'FEL,SEC.04)
Area	COLORADO	Well	RANCHO WATER VALLEY 9
Field	WELD COUNTY (NAD83/TRUE NORTH)	Wellbore	RANCHO WATER VALLEY 9 PWB
Facility	SEC.04-T05N-R67W		

WELLPATH DATA (124 stations) † = interpolated/extrapolated station								
MD [ft]	Inclination [°]	Azimuth [°]	TVD [ft]	Vert Sect [ft]	North [ft]	East [ft]	DLS [°/100ft]	Comments
5724.00†	9.055	153.480	5667.02	-206.41	-654.53	326.63	0.00	
5824.00†	9.055	153.480	5765.78	-210.85	-668.62	333.66	0.00	
5924.00†	9.055	153.480	5864.53	-215.29	-682.70	340.68	0.00	
6024.00†	9.055	153.480	5963.28	-219.73	-696.78	347.71	0.00	
6124.00†	9.055	153.480	6062.04	-224.17	-710.86	354.74	0.00	
6224.00†	9.055	153.480	6160.79	-228.61	-724.94	361.76	0.00	
6324.00†	9.055	153.480	6259.55	-233.05	-739.02	368.79	0.00	
6424.00†	9.055	153.480	6358.30	-237.49	-753.11	375.82	0.00	
6511.07	9.055	153.480	6444.28	-241.36	-765.37	381.94	0.00	End of Tangent
6524.00†	8.590	160.442	6457.06	-241.80	-767.19	382.71	9.00	
6624.00†	10.061	217.707	6555.94	-236.54	-781.16	379.87	9.00	
6724.00†	17.017	243.131	6653.18	-216.01	-794.71	361.43	9.00	
6824.00†	25.275	253.247	6746.39	-180.72	-807.51	327.87	9.00	
6924.00†	33.896	258.536	6833.29	-131.54	-819.23	280.00	9.00	
7024.00†	42.659	261.866	6911.72	-69.67	-829.58	219.01	9.00	
7124.00†	51.491	264.238	6979.77	3.35	-838.32	146.39	9.00	
7224.00†	60.360	266.087	7035.74	85.73	-845.23	63.94	9.00	
7324.00†	69.251	267.634	7078.27	175.45	-850.14	-26.32	9.00	
7424.00†	78.154	269.008	7106.30	270.29	-852.92	-122.17	9.00	
7524.00†	87.063	270.295	7119.16	367.91	-853.51	-221.23	9.00	
7556.96	90.000	270.712	7120.00 <sup>1</sup>	400.29	-853.22	-254.17	9.00	End of 3D Arc
7624.00†	90.000	270.712	7120.00	466.13	-852.39	-321.21	0.00	
7724.00†	90.000	270.712	7120.00	564.35	-851.15	-421.20	0.00	
7824.00†	90.000	270.712	7120.00	662.56	-849.91	-521.19	0.00	
7924.00†	90.000	270.712	7120.00	760.78	-848.66	-621.19	0.00	
8024.00†	90.000	270.712	7120.00	858.99	-847.42	-721.18	0.00	
8124.00†	90.000	270.712	7120.00	957.21	-846.18	-821.17	0.00	
8224.00†	90.000	270.712	7120.00	1055.42	-844.94	-921.16	0.00	
8324.00†	90.000	270.712	7120.00	1153.64	-843.70	-1021.16	0.00	
8424.00†	90.000	270.712	7120.00	1251.85	-842.45	-1121.15	0.00	



# Planned Wellpath Report

## RANCHO WATER VALLEY 9 (REV-B.0) PWP

Page 5 of 7



### REFERENCE WELLPATH IDENTIFICATION

Operator	EXTRACTION OIL & GAS	Slot	SLOT#06 RANCHO WATER VALLEY 9(643'FNL & 264'FEL,SEC.04)
Area	COLORADO	Well	RANCHO WATER VALLEY 9
Field	WELD COUNTY (NAD83/TRUE NORTH)	Wellbore	RANCHO WATER VALLEY 9 PWB
Facility	SEC.04-T05N-R67W		

### WELLPATH DATA (124 stations) † = interpolated/extrapolated station

MD [ft]	Inclination [°]	Azimuth [°]	TVD [ft]	Vert Sect [ft]	North [ft]	East [ft]	DLS [°/100ft]	Comments
8524.00†	90.000	270.712	7120.00	1350.07	-841.21	-1221.14	0.00	
8624.00†	90.000	270.712	7120.00	1448.28	-839.97	-1321.13	0.00	
8724.00†	90.000	270.712	7120.00	1546.50	-838.73	-1421.12	0.00	
8824.00†	90.000	270.712	7120.00	1644.71	-837.49	-1521.12	0.00	
8924.00†	90.000	270.712	7120.00	1742.93	-836.24	-1621.11	0.00	
9024.00†	90.000	270.712	7120.00	1841.14	-835.00	-1721.10	0.00	
9124.00†	90.000	270.712	7120.00	1939.36	-833.76	-1821.09	0.00	
9224.00†	90.000	270.712	7120.00	2037.57	-832.52	-1921.09	0.00	
9324.00†	90.000	270.712	7120.00	2135.79	-831.28	-2021.08	0.00	
9424.00†	90.000	270.712	7120.00	2234.00	-830.03	-2121.07	0.00	
9524.00†	90.000	270.712	7120.00	2332.22	-828.79	-2221.06	0.00	
9624.00†	90.000	270.712	7120.00	2430.43	-827.55	-2321.06	0.00	
9724.00†	90.000	270.712	7120.00	2528.65	-826.31	-2421.05	0.00	
9824.00†	90.000	270.712	7120.00	2626.86	-825.07	-2521.04	0.00	
9924.00†	90.000	270.712	7120.00	2725.07	-823.82	-2621.03	0.00	
10024.00†	90.000	270.712	7120.00	2823.29	-822.58	-2721.02	0.00	
10124.00†	90.000	270.712	7120.00	2921.50	-821.34	-2821.02	0.00	
10224.00†	90.000	270.712	7120.00	3019.72	-820.10	-2921.01	0.00	
10324.00†	90.000	270.712	7120.00	3117.93	-818.86	-3021.00	0.00	
10424.00†	90.000	270.712	7120.00	3216.15	-817.62	-3120.99	0.00	
10524.00†	90.000	270.712	7120.00	3314.36	-816.37	-3220.99	0.00	
10624.00†	90.000	270.712	7120.00	3412.58	-815.13	-3320.98	0.00	
10724.00†	90.000	270.712	7120.00	3510.79	-813.89	-3420.97	0.00	
10824.00†	90.000	270.712	7120.00	3609.01	-812.65	-3520.96	0.00	
10924.00†	90.000	270.712	7120.00	3707.22	-811.41	-3620.95	0.00	
11024.00†	90.000	270.712	7120.00	3805.44	-810.16	-3720.95	0.00	
11124.00†	90.000	270.712	7120.00	3903.65	-808.92	-3820.94	0.00	
11224.00†	90.000	270.712	7120.00	4001.87	-807.68	-3920.93	0.00	
11324.00†	90.000	270.712	7120.00	4100.08	-806.44	-4020.92	0.00	
11424.00†	90.000	270.712	7120.00	4198.30	-805.20	-4120.92	0.00	



# Planned Wellpath Report

## RANCHO WATER VALLEY 9 (REV-B.0) PWP

Page 6 of 7



### REFERENCE WELLPATH IDENTIFICATION

Operator	EXTRACTION OIL & GAS	Slot	SLOT#06 RANCHO WATER VALLEY 9(643'FNL & 264'FEL,SEC.04)
Area	COLORADO	Well	RANCHO WATER VALLEY 9
Field	WELD COUNTY (NAD83/TRUE NORTH)	Wellbore	RANCHO WATER VALLEY 9 PWB
Facility	SEC.04-T05N-R67W		

### WELLPATH DATA (124 stations) † = interpolated/extrapolated station

MD [ft]	Inclination [°]	Azimuth [°]	TVD [ft]	Vert Sect [ft]	North [ft]	East [ft]	DLS [°/100ft]	Comments
11524.00†	90.000	270.712	7120.00	4296.51	-803.95	-4220.91	0.00	
11624.00†	90.000	270.712	7120.00	4394.73	-802.71	-4320.90	0.00	
11724.00†	90.000	270.712	7120.00	4492.94	-801.47	-4420.89	0.00	
11784.35	90.000	270.712	7120.00 <sup>2</sup>	4552.21	-800.72	-4481.24	0.00	End of Tangent

### HOLE & CASING SECTIONS -

Ref Wellbore: RANCHO WATER VALLEY 9 PWB      Ref Wellpath: RANCHO WATER VALLEY 9 (REV-B.0) PWP

String/Diameter	Start MD [ft]	End MD [ft]	Interval [ft]	Start TVD [ft]	End TVD [ft]	Start N/S [ft]	Start E/W [ft]	End N/S [ft]	End E/W [ft]
7in Casing Intermediate	24.00	7556.96	7532.96	24.00	7120.00	0.00	0.00	-853.22	-254.17



# Planned Wellpath Report

RANCHO WATER VALLEY 9 (REV-B.0) PWP

Page 7 of 7



REFERENCE WELLPATH IDENTIFICATION			
Operator	EXTRACTION OIL & GAS	Slot	SLOT#06 RANCHO WATER VALLEY 9(643'FNL & 264'FEL,SEC.04)
Area	COLORADO	Well	RANCHO WATER VALLEY 9
Field	WELD COUNTY (NAD83/TRUE NORTH)	Wellbore	RANCHO WATER VALLEY 9 PWB
Facility	SEC.04-T05N-R67W		

TARGETS									
Name	MD [ft]	TVD [ft]	North [ft]	East [ft]	Grid East [US ft]	Grid North [US ft]	Latitude	Longitude	Shape
RANCHO WATER VALLEY PAD N1/2 SECTION 04		0.00	-28.05	-0.28	3170351.42	1401623.60	40°26'03.282"N	104°53'16.922"W	polygon
RWV PAD N1/2 SECTION 04 HARDLINES(460'SETBACKS)		6780.00	-28.05	-0.28	3170351.42	1401623.60	40°26'03.282"N	104°53'16.922"W	polygon
RANCHO WATER VALLEY 9 BHL ON PLAT REV-1(1431'FNL & 460'FWL,SEC.04)		7120.00	-809.10	-4481.24	3165876.14	1400811.68	40°25'55.560"N	104°54'14.868"W	point
2) RANCHO WATER VALLEY 9 BHL ON PLAT REV-2(1424'FNL & 460'FWL,SEC.04)	11784.35	7120.00	-800.72	-4481.24	3165876.08	1400820.06	40°25'55.643"N	104°54'14.868"W	point
1) RANCHO WATER VALLEY 9 LANDING	7556.96	7120.00	-853.22	-254.17	3170103.24	1400796.73	40°25'55.128"N	104°53'20.206"W	point

SURVEY PROGRAM - Ref Wellbore: RANCHO WATER VALLEY 9 PWB Ref Wellpath: RANCHO WATER VALLEY 9 (REV-B.0) PWP				
Start MD [ft]	End MD [ft]	Positional Uncertainty Model	Log Name/Comment	Wellbore
24.00	13000.00	NaviTrak (Standard)		RANCHO WATER VALLEY 9 PWB