

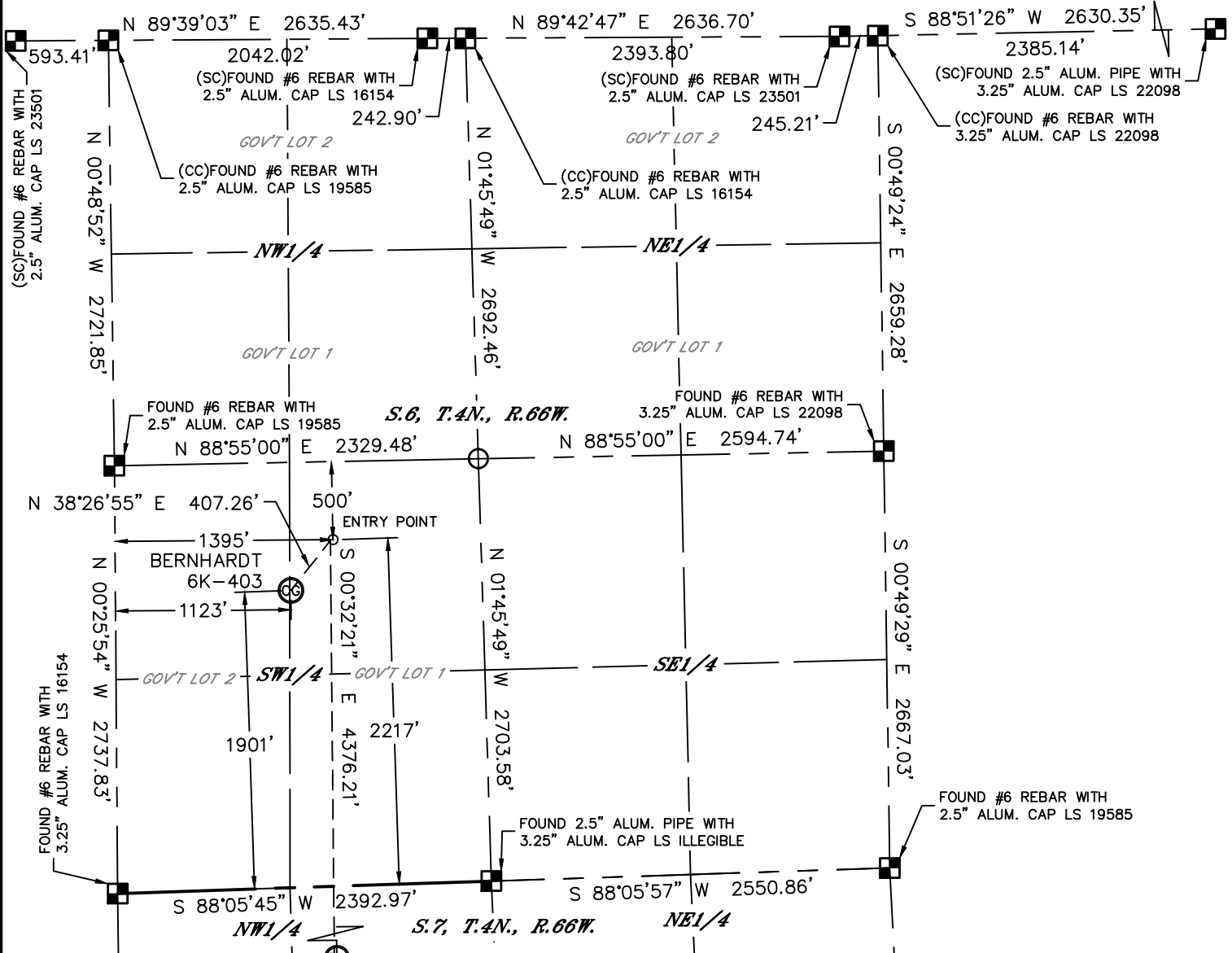


Lat40°, Inc. 1635 Foxtrail Drive, Suite 325 Loveland, CO 970-776-3321

# WELL LOCATION CERTIFICATE

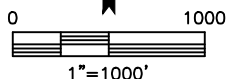
THIS MAP DOES NOT REPRESENT A BOUNDARY SURVEY

SECTION: 6  
TOWNSHIP: 4N  
RANGE: 66W



In accordance with a request from Mac Neumann with PDC ENERGY Lat40°, Inc. has determined the surface location of the BERNHARDT 6K-403 to be 1901' from the SOUTH line and 1123' from the WEST line as measured at right angles from the section lines of Section 6, Township 4 North, Range 66 West and the bottom hole to be 2158' from the NORTH line and 1395' from the WEST line as measured at right angles from the section lines of Section 7, Township 4 North, Range 66 West of the Sixth Principal Meridian, County of Weld, State of Colorado.

I hereby state that this Well Location Certificate was prepared by me, or under my direct supervision, that the fieldwork was completed on 8/8/2014, for and on behalf of PDC ENERGY. That this is not a Land Survey Plat or an Improvement Survey Plat, and that it is not to be relied upon for establishment of fence, building, or other future improvement lines.



## NOTE:

- 1) Bearings shown are Grid Bearings of the Colorado State Plane Coordinate System, North Zone, North American Datum 1983. The lined dimensions as contained herein are based upon the "U.S. Survey Foot."
- 2) Ground elevations are based on an observed GPS elevation (NAVD 1988 DATUM).
- 3) IMPROVEMENTS: See LOCATION DRAWING for all visible improvements within 500' of disturbed area.
- 4) SURFACE USE: CROP LAND
- 5) INSTRUMENT OPERATOR: BRIAN ROTTINGHAUS
- 6) NEAREST CULTURAL ITEMS:  
BUILDING: ±1481' SE  
BUILDING UNIT: ±1686' SE  
HIGH OCCUPANCY BUILDING UNIT: ±4011' SW  
DESIGNATED OUTSIDE ACTIVITY AREA: 5280'+  
PUBLIC ROAD: (CR 25) ±823' NW  
ABOVEGROUND UTILITY: ±201' NW  
RAILROAD: ±210' NW (ABANDONED)  
PROPERTY LINE: ±820' N

## SURFACE LOCATION

LAT: 40.33912°N  
LONG: 104.82576°W  
PDOP: 1.7  
ELEV: 4713'  
1/4, 1/4: NESW

## BOTTOM HOLE

LAT: 40.32800°N  
LONG: 104.82475°W

## ENTRY POINT

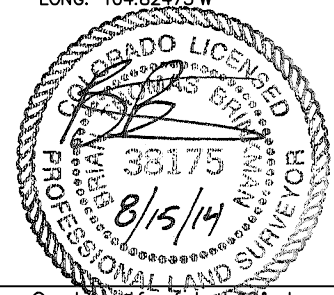
LAT: 40.34001°N  
LONG: 104.82478°W

## LEGEND

- = ALIQUOT MONUMENT AS DESCRIBED  
○ = CALCULATED POSITION

## SHEET 1 OF 2

Brian T. Brinkman—On behalf of Lat40°, Inc.  
Colorado Licensed Professional  
Land Surveyor No. 38175  
DATE: 8/15/2014  
PROJECT#: 2013177



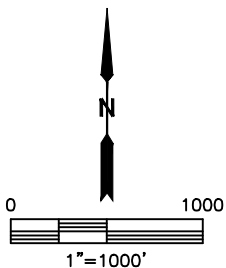
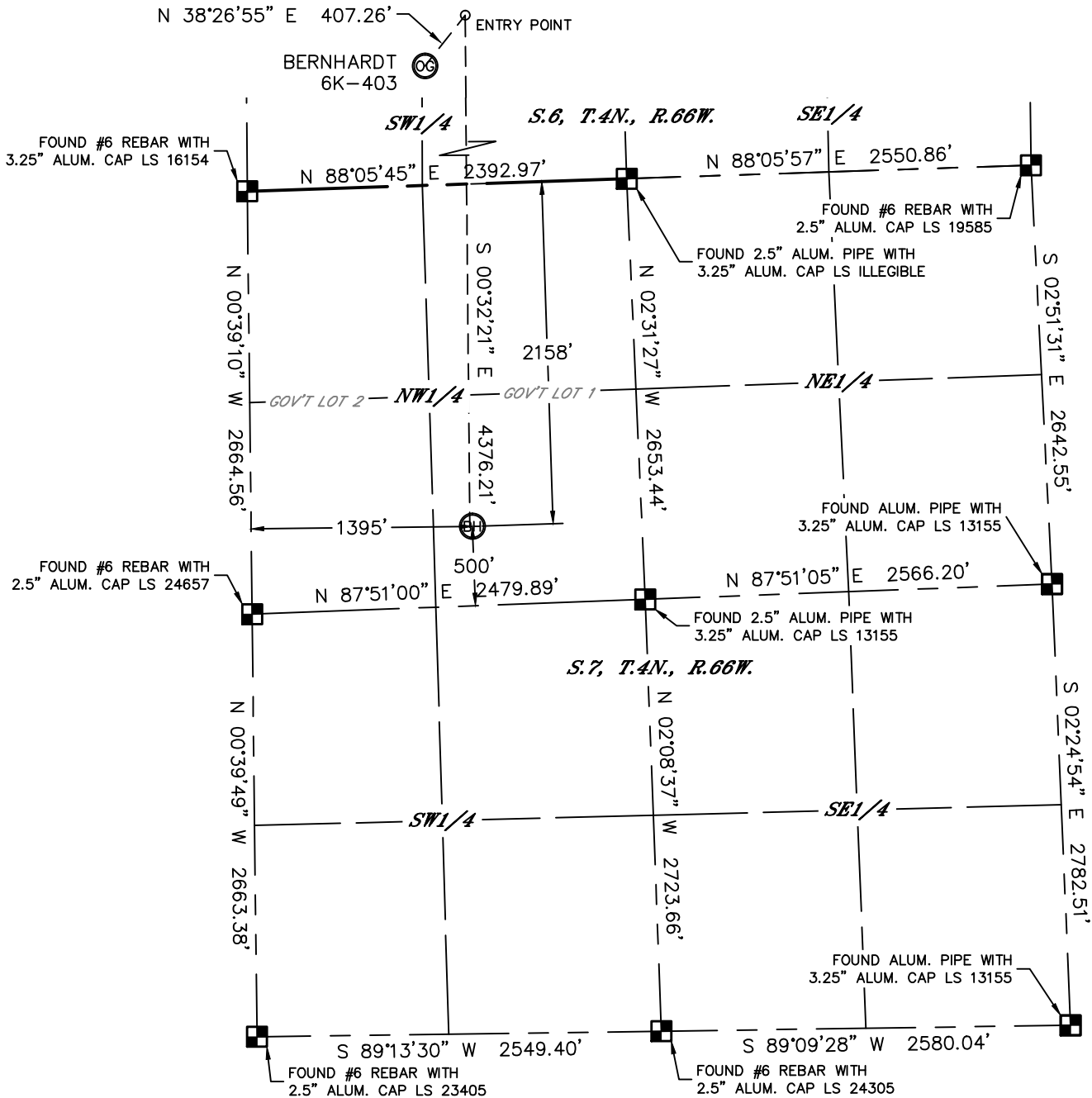


Lat40°, Inc. 1635 Foxtrail Drive, Suite 325 Loveland, CO 970-776-3321

# WELL LOCATION CERTIFICATE

SECTION: 6  
TOWNSHIP: 4N  
RANGE: 66W

THIS MAP DOES NOT REPRESENT A BOUNDARY SURVEY

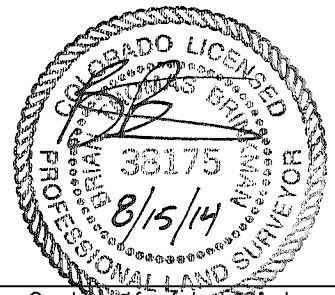


## LEGEND

- = ALIQUOT MONUMENT AS DESCRIBED
- = CALCULATED POSITION

## SHEET 2 OF 2

Brian T. Brinkman—On behalf of Lat40°, Inc.  
Colorado Licensed Professional  
Land Surveyor No. 38175  
DATE: 8/15/2014  
PROJECT#: 2013177



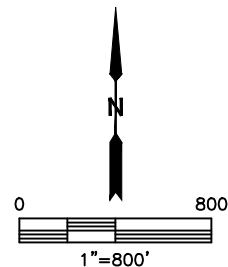
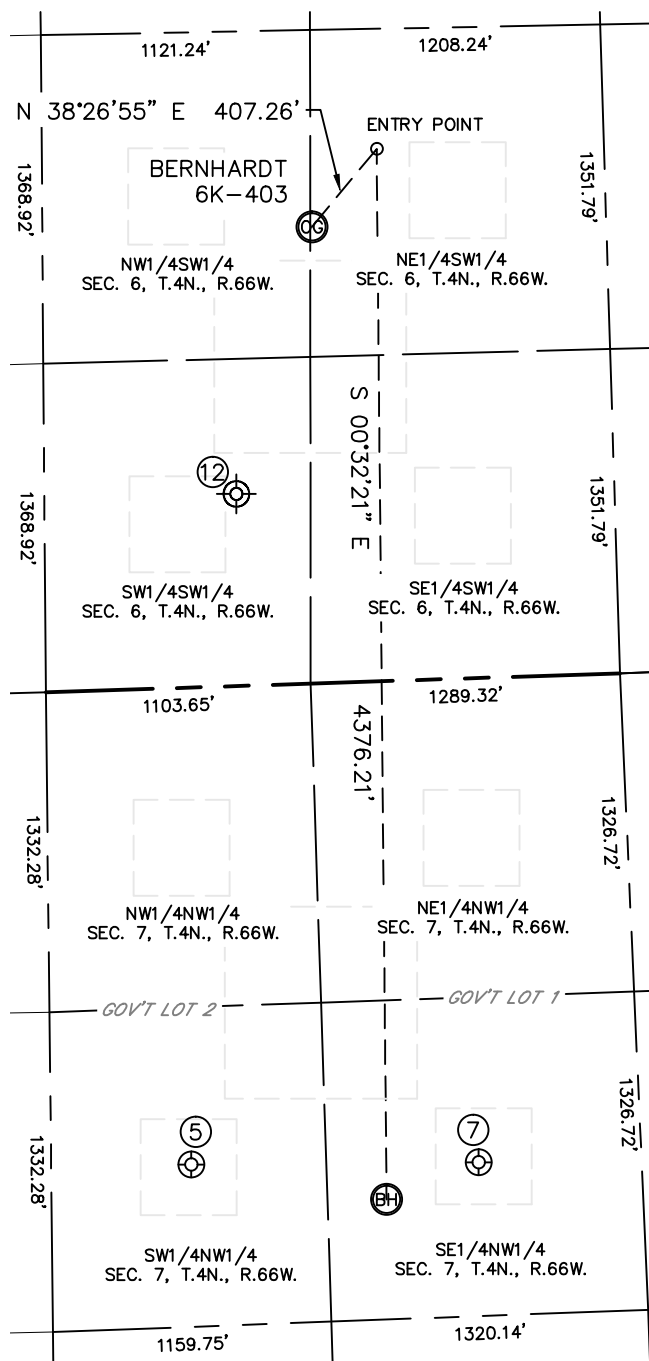


Lat40°, Inc. 1635 Foxtrail Drive, Suite 325 Loveland, CO 970-776-3321

# SITE SKETCH

BERNHARDT 6K-403

SECTION: 6  
TOWNSHIP: 4N  
RANGE: 66W



| WELL NO. | WELL NAME       | SHL FOOTAGE |     |          | SHL LAT° | SHL LONG°  | PDOP | ELEV (FT.) | 1/4/1/4 |
|----------|-----------------|-------------|-----|----------|----------|------------|------|------------|---------|
| 5        | BERNHARDT 7-1   | 1986        | FNL | 583 FWL  | 40.32841 | -104.82767 | 2.1  | 4731       | SWNW    |
| 7        | BERNHARDT 7-2   | 2017        | FNL | 1780 FWL | 40.32841 | -104.82337 | 2.3  | 4729       | SENW    |
| 12       | BERNHARDT #13-6 | 800         | FSL | 800 FWL  | 40.33603 | -104.82670 | N/A  | 4713       | SWSW    |

NOTE: THE ABANDONED WELL DATA SHOWN IN RED ABOVE WAS OBTAINED FROM COGCC SCOUT CARDS.

DATE: 8/15/2014  
PROJECT#: 2013177