

LEGEND:

- = 90° SYMBOL
 = PROPOSED WELLHEAD.
 = TARGET BOTTOM HOLE.
 = SECTION CORNERS LOCATED.

T10N, R58W, 6th P.M.

Target
Bottom Hole

2012 UELS Alum. Cap,
Flush W/Ground, PLS 28285
Lat: 40.816567°
Long: 103.889556°

2010 UELS Alum. Cap,
Flush W/ Ground
RLS 17492
Lat: 40.816664°
Long: 103.880000°

2011 UELS Alum. Cap,
0.2' High, PLS 28285
Lat: 40.816467°
Long: 103.899111°

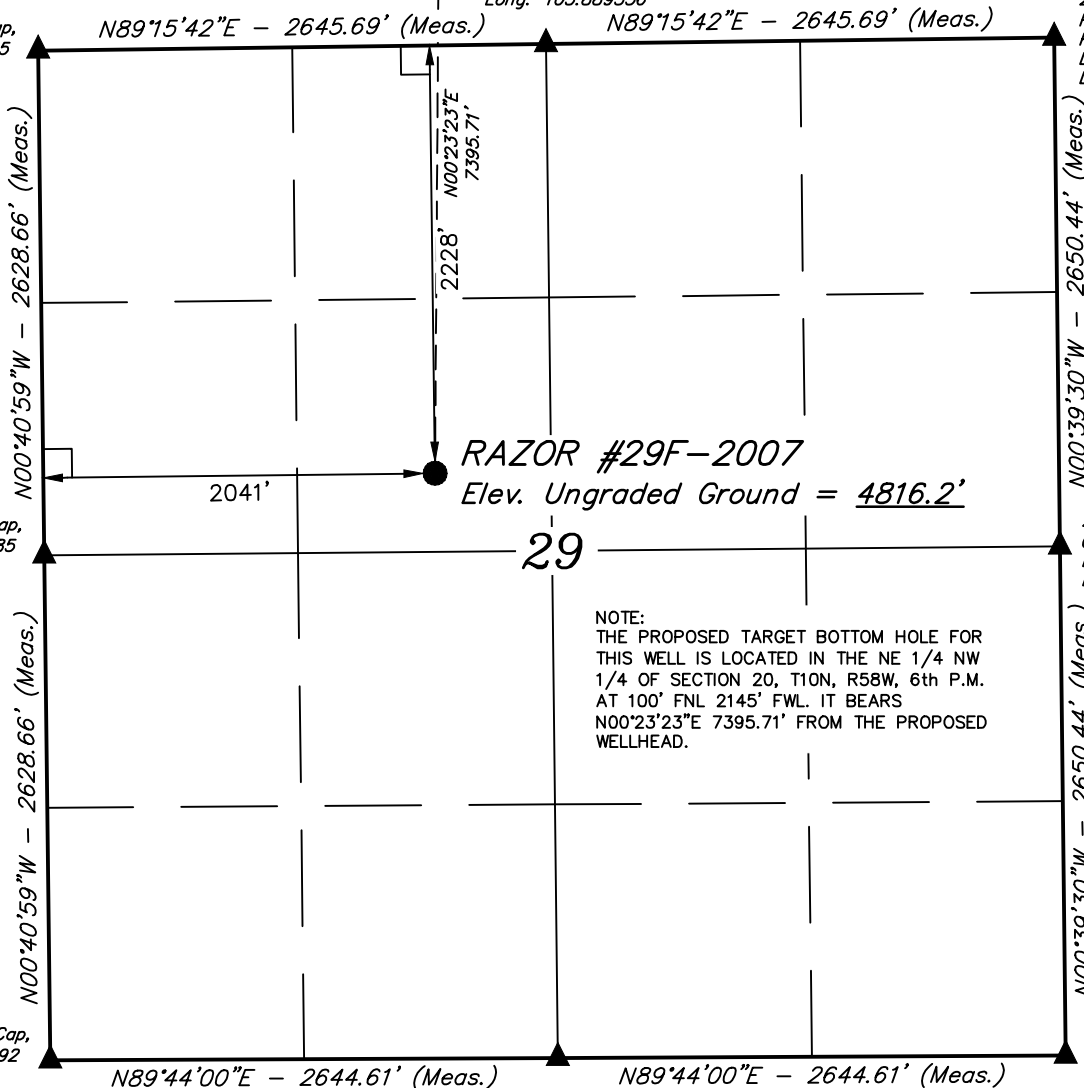
2011 UELS Alum. Cap,
0.3' High, PLS 28285
Lat: 40.809256°
Long: 103.898992°

2010 UELS Alum. Cap,
0.2' High, RLS 17492
Lat: 40.802042°
Long: 103.898872°

2012 UELS Alum. Cap,
Flush W/ Ground,
PLS 28285
Lat: 40.802081°
Long: 103.889322°

2012 UELS Alum. Cap,
0.1' High, PLS 28285
Lat: 40.809389°
Long: 103.879886°

2010 UELS Alum. Cap,
0.3' High
Lat: 40.802117°
Long: 103.879772°



NOTE:
THE PROPOSED TARGET BOTTOM HOLE FOR
THIS WELL IS LOCATED IN THE NE 1/4 NW
1/4 OF SECTION 20, T10N, R58W, 6th P.M.
AT 100' FNL 2145' FWL. IT BEARS
N00°23'23\"E 7395.71' FROM THE PROPOSED
WELLHEAD.

PDOP = 1.3

NAD 83 (SURFACE LOCATION)	
LATITUDE = 40°48'37.55" (40.810431)	
LONGITUDE = 103°53'29.91" (103.891642)	
NAD 27 (SURFACE LOCATION)	
LATITUDE = 40°48'37.60" (40.810444)	
LONGITUDE = 103°53'28.10" (103.891139)	



CERTIFICATE
THIS IS TO CERTIFY THAT THE ABOVE PLAT WAS PREPARED FROM FIELD
NOTES OF ACTUAL SURVEYS MADE BY ME OR UNDER MY SUPERVISION
AND THAT THE SAME ARE TRUE AND CORRECT TO THE BEST OF MY
KNOWLEDGE AND BELIEF.

REGISTERED LAND SURVEYOR
REGISTRATION NO. 28285
STATE OF COLORADO 05-06-14

BASIS OF BEARINGS
BASIS OF BEARINGS IS A G.P.S. OBSERVATION

BASIS OF ELEVATION

SPOT ELEVATION LOCATED AT THE NORTHEAST CORNER OF SECTION 15, T9N, R58W, 6th P.M. TAKEN FROM THE GATEHOOK SPRING, QUADRANGLE, COLORADO, WELD COUNTY, 7.5 MINUTE QUAD (TOPOGRAPHIC MAP) PUBLISHED BY THE UNITED STATES DEPARTMENT OF THE INTERIOR, GEOLOGICAL SURVEY. SAID ELEVATION IS MARKED AS BEING 4679 FEET.



WHITING OIL & GAS CORP.

RAZOR #29F-2007 (SURFACE LOCATION)
SE 1/4 NW 1/4, SECTION 29, T10N, R58W, 6th P.M.
WELD COUNTY, COLORADO

SURVEYED BY: DALLAS NIELSEN, L.P.	DATE: 04-17-14
DRAWN BY: J.S.	DATE DRAWN: 05-06-14
SCALE: 1" = 1000'	REVISION: 00-00-00

WELL LOCATION PLAT



UELS, LLC
Corporate Office * 85 South 200 East
Vernal, UT 84078 * (435) 789-1017

LEGEND:

└─ = 90° SYMBOL

● = PROPOSED WELLHEAD.

○ = TARGET BOTTOM HOLE.

▲ = SECTION CORNERS LOCATED.

T10N, R58W, 6th P.M.

2011 UELS Alum. Cap,
Fence Wood Posts,
RLS 17492
Lat: 40.831047°
Long: 103.899228°

S89°29'46"E -
2629.81' (Meas.)

2012 UELS Alum. Cap,
0.3' High, PLS 28285
Lat: 40.830989°
Long: 103.889725°

N89°29'46"W - 2629.81' (Meas.)

2011 UELS Alum. Cap,
Fence Wood Posts,
RLS 17492
Lat: 40.830928°
Long: 103.880225°

N00°18'21"W - 2656.65' (Meas.)

2145'

RAZOR #29F-2007
Target Bottom Hole

N00°39'35"W - 2599.56' (Meas.)

2012 UELS Alum.
Cap, Flush W/Ground,
PLS 28285
Lat: 40.823758°
Long: 103.899169°

N00°18'21"W - 2656.65' (Meas.)

20

NOTE:
THE PROPOSED TARGET BOTTOM HOLE
BEARS N00°23'23"E 7395.71' FROM THE
PROPOSED WELLHEAD WHICH IS LOCATED IN
THE SE 1/4 NW 1/4 OF SECTION 29, T10N,
R58W, 6th P.M. AT 2228' FNL 2041' FWL.

N00°23'23"E
7395.71'

2012 UELS Alum. Cap,
0.3' High, PLS 28285
Lat: 40.823794°
Long: 103.880114°

N00°39'35"W - 2599.56' (Meas.)

2011 UELS Alum. Cap,
0.2' High, PLS 28285
Lat: 40.816467°
Long: 103.899111°

N89°15'42"E - 2645.69' (Meas.)

N89°15'42"E - 2645.69' (Meas.)

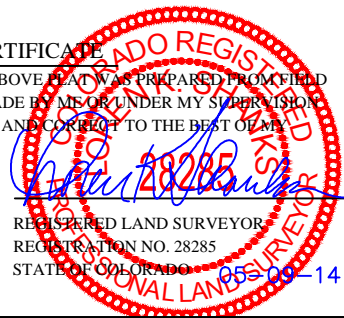
2012 UELS Alum. Cap,
Flush W/Ground, PLS 28285
Lat: 40.816567°
Long: 103.889556°

Surface Location ●

CERTIFICATE

THIS IS TO CERTIFY THAT THE ABOVE PLAT WAS PREPARED FROM FIELD
NOTES OF ACTUAL SURVEYS MADE BY ME OR UNDER MY SUPERVISION
AND THAT THE SAME ARE TRUE AND CORRECT TO THE BEST OF MY
KNOWLEDGE AND BELIEF.

NAD 83 (TARGET BOTTOM HOLE)
LATITUDE = 40°49'50.61" (40.830725)
LONGITUDE = 103°53'29.31" (103.891475)
NAD 27 (TARGET BOTTOM HOLE)
LATITUDE = 40°49'50.66" (40.830739)
LONGITUDE = 103°53'27.50" (103.890972)



BASIS OF BEARINGS

BASIS OF BEARINGS IS A G.P.S. OBSERVATION

BASIS OF ELEVATION

SPOT ELEVATION LOCATED AT THE NORTHEAST CORNER OF SECTION 15, T9N, R58W, 6th P.M. TAKEN FROM THE GATEHOOK SPRING, QUADRANGLE, COLORADO, WELD COUNTY, 7.5 MINUTE QUAD (TOPOGRAPHIC MAP) PUBLISHED BY THE UNITED STATES DEPARTMENT OF THE INTERIOR, GEOLOGICAL SURVEY. SAID ELEVATION IS MARKED AS BEING 4679 FEET.



WHITING OIL & GAS CORP.

RAZOR #29F-2007 (TARGET BOTTOM HOLE)
NE 1/4 NW 1/4, SECTION 20, T10N, R58W, 6th P.M.
WELD COUNTY, COLORADO

SURVEYED BY: DALLAS NIELSEN, L.P.	DATE: 04-17-14
DRAWN BY: J.S.	DATE DRAWN: 05-06-14
SCALE: 1" = 1000'	REVISION: 00-00-00

WELL LOCATION PLAT



UELS, LLC
Corporate Office * 85 South 200 East
Vernal, UT 84078 * (435) 789-1017