

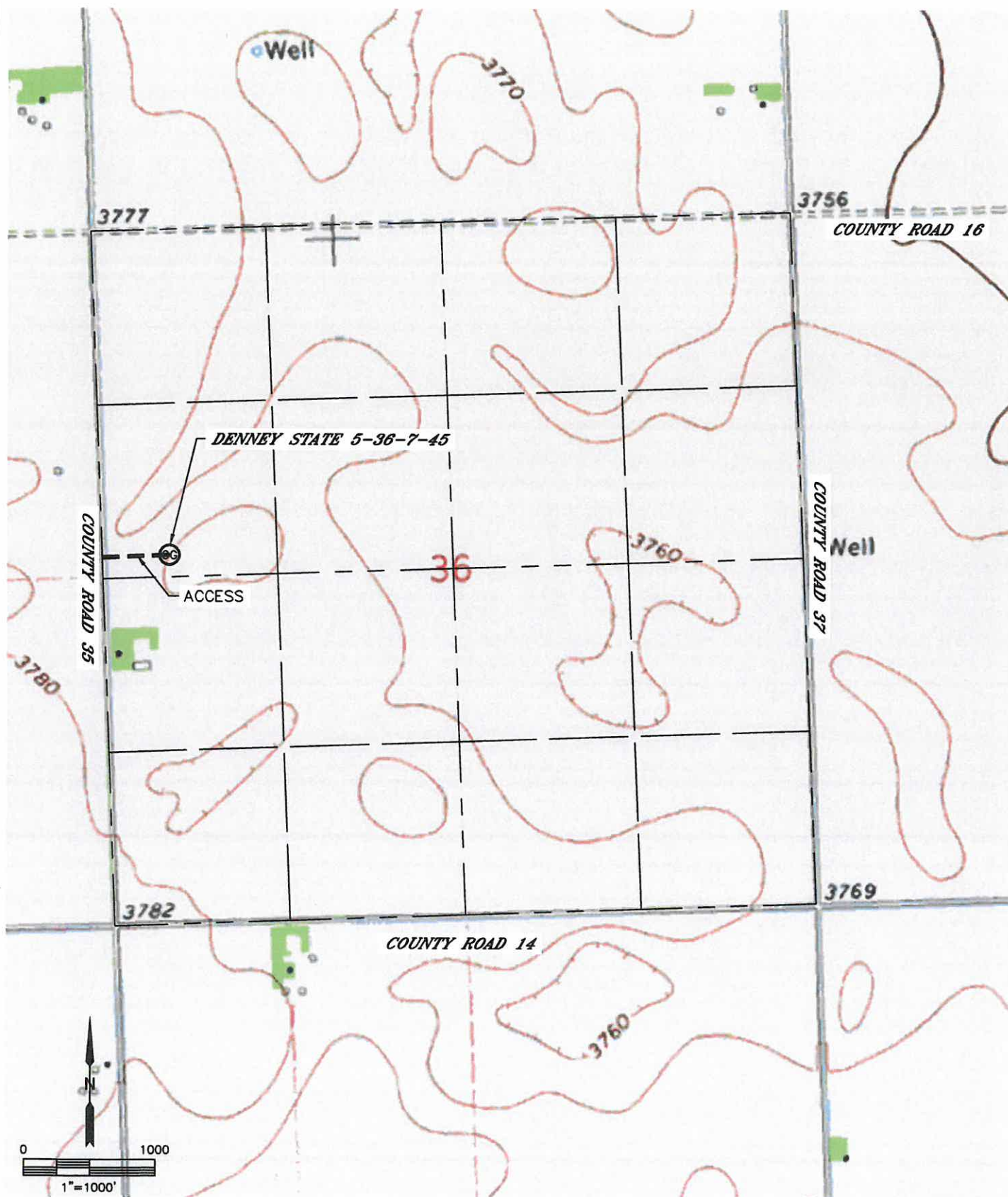


Lat40°, Inc. 1635 Foxtrail Drive, Suite 325 Loveland, CO 970-776-3321

ACCESS ROAD MAP

DENNEY STATE 5-36-7-45

SECTION: 36
TOWNSHIP: 7N
RANGE: 45W



DATE: 1/27/2014
PROJECT#: 2013175