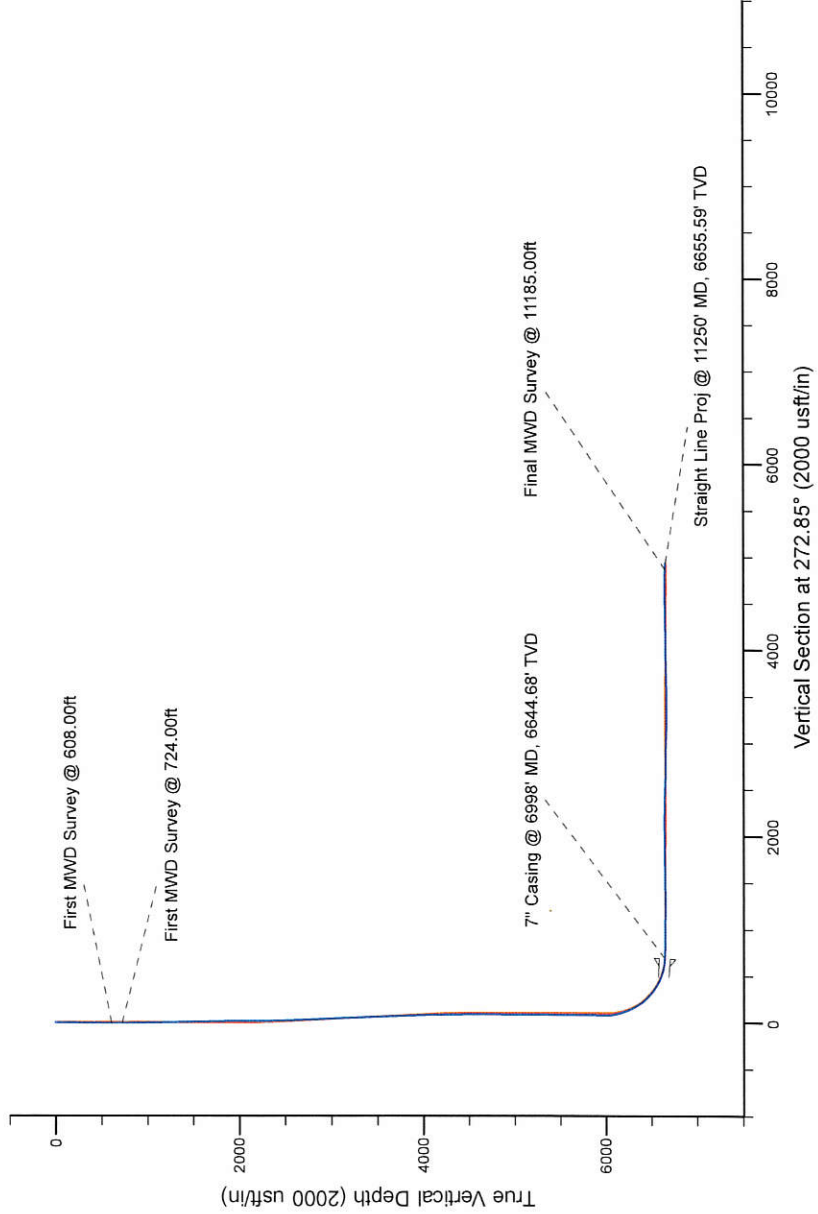
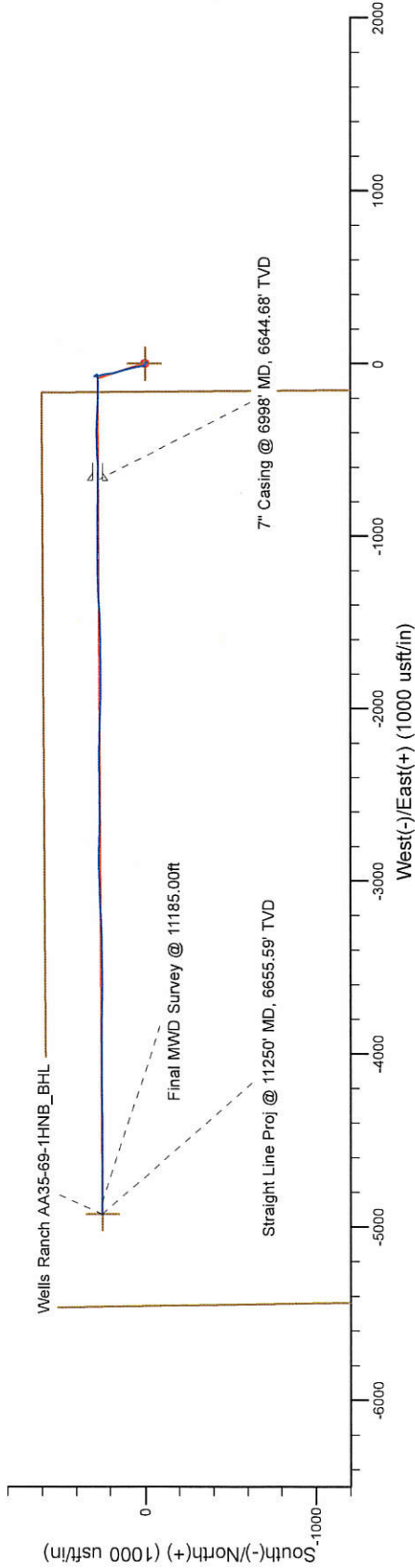


Project: Weld County, CO (NAD 83)
Site: Sec. 36-T6N-R63W (Wells Ranch AA35)
Well: Wells Ranch AA35-69-1HNB
Wellbore: Plan B
Design: Final Surveys

Noble Energy

HALLIBURTON
Sperry Drilling



LEGEND

- Wells Ranch AA35-69-1HNB, Plan B, Rev B0 - PROPOSAL V0
- Final Surveys

Platted SHL:
Platted Lat/Long:
Location: Sec. 36-T6N-R63W

7" Casing: ~327.52' FNL, ~510.36' FEL
Lat/Long: 40.449260 N, 104.396509 W
State Planes - CO Northern: 1,408,416.52' N, 3,307,102.51' E
Location: Sec. 35-T6N-R63W

BHL: ~326.04' FNL, ~534.25' FWL
Lat/Long: 40.449336 N, 104.411777 W
State Planes - CO Northern: 1,408,391.80' N, 3,302,853.14' E
Location: Sec. 35-T6N-R63W

WELL DETAILS: Wells Ranch AA35-69-1HNB

Ground Level: 4809.00
RKB = 30 @ 4839.00usft (H&P 321)

Created By: Fred Hartmann
Created On: 02/24/2014

Noble Energy

Weld County, CO (NAD 83)

Sec. 36-T6N-R63W (Wells Ranch AA35)

Wells Ranch AA35-69-1HNB

Design: Final Surveys

Sperry Drilling Services

Final Survey Report

24 February, 2014

Well Coordinates: 1,408,144.48 N, 3,307,779.10 E (40° 26' 54.56" N, 104° 23' 38.72" W)

Ground Level: 4,809.00 usft

Local Coordinate Origin:

Viewing Datum:

TVDs to System:

North Reference:

Unit System:

Geodetic Scale Factor Applied

Version: 5000.1 Build: 70

Centered on Well Wells Ranch AA35-69-1HNB

RKB = 30 @ 4839.00usft (H&P 321)

N

Grid

Dec-Deg - API - US Survey Feet - Custom

HALLIBURTON

Design Report for Wells Ranch AA35-69-1HNB - Final Surveys

Measured Depth (usft)	Inclination (°)	Azimuth (°)	Vertical Depth (usft)	+N/-S (usft)	+E/-W (usft)	Vertical Section (usft)	Dogleg Rate (°/100usft)
0.00	0.00	0.00	0.00	0.00	0.00	0.00	0.00
241.00	1.00	145.13	240.99	-1.73	1.20	-1.29	0.41
487.00	1.10	145.33	486.95	-5.43	3.77	-4.04	0.04
608.00	0.20	102.03	607.94	-6.43	4.64	-4.95	0.80
First MWD Survey @ 608.00ft							
724.00	0.38	182.09	723.94	-6.85	4.82	-5.16	0.34
First MWD Survey @ 724.00ft							
816.00	0.25	134.62	815.94	-7.30	4.96	-5.31	0.30
909.00	0.83	304.55	908.93	-7.06	4.55	-4.89	1.16
1,000.00	1.13	309.90	999.92	-6.11	3.31	-3.61	0.34
1,092.00	1.64	290.73	1,091.89	-5.06	1.39	-1.64	0.74
1,183.00	0.93	289.64	1,182.87	-4.35	-0.53	0.31	0.78
1,275.00	1.14	298.43	1,274.85	-3.67	-2.03	1.85	0.29
1,367.00	1.44	304.57	1,366.83	-2.58	-3.79	3.66	0.36
1,459.00	1.32	302.63	1,458.80	-1.35	-5.64	5.56	0.14
1,554.00	1.25	326.38	1,553.78	0.10	-7.13	7.13	0.56
1,649.00	1.46	311.57	1,648.75	1.77	-8.61	8.69	0.43
1,743.00	1.42	289.58	1,742.73	2.95	-10.60	10.74	0.59
1,838.00	0.92	271.71	1,837.71	3.37	-12.47	12.63	0.65
1,933.00	0.38	21.81	1,932.70	3.69	-13.12	13.29	1.17
2,027.00	0.56	118.97	2,026.70	3.75	-12.60	12.77	0.76
2,120.00	1.56	346.42	2,119.69	4.76	-12.50	12.72	2.13
2,215.00	3.61	336.41	2,214.59	8.76	-14.00	14.42	2.20
2,310.00	4.83	349.67	2,309.33	15.44	-15.92	16.66	1.64
2,405.00	7.95	350.10	2,403.73	25.85	-17.76	19.03	3.28
2,500.00	8.37	348.64	2,497.77	39.10	-20.26	22.17	0.49
2,595.00	8.54	349.98	2,591.73	52.82	-22.84	25.44	0.27
2,689.00	7.56	346.62	2,684.81	65.71	-25.49	28.72	1.16
2,784.00	7.55	344.58	2,778.98	77.81	-28.60	32.43	0.28
2,879.00	8.13	348.40	2,873.10	90.41	-31.61	36.06	0.82
2,974.00	8.88	347.58	2,967.05	104.15	-34.53	39.67	0.80
3,068.00	9.07	345.48	3,059.90	118.41	-37.95	43.79	0.40
3,163.00	7.31	343.12	3,153.93	131.44	-41.58	48.06	1.89
3,258.00	7.25	343.71	3,248.16	142.98	-45.02	52.07	0.10
3,353.00	7.37	341.14	3,342.39	154.50	-48.67	56.29	0.37
3,448.00	7.52	343.37	3,436.59	166.22	-52.42	60.61	0.34
3,543.00	7.31	342.79	3,530.79	177.95	-55.99	64.76	0.23
3,638.00	8.82	354.09	3,624.86	190.97	-58.53	67.94	2.30
3,733.00	9.87	353.50	3,718.60	206.30	-60.20	70.37	1.11
3,828.00	9.56	350.80	3,812.23	222.18	-62.38	73.34	0.58
3,923.00	9.18	347.52	3,905.97	237.37	-65.28	76.99	0.69
4,018.00	7.12	345.12	4,000.00	250.46	-68.43	80.79	2.20
4,112.00	6.64	348.51	4,093.33	261.41	-71.01	83.91	0.67
4,207.00	5.06	353.77	4,187.83	270.96	-72.56	85.93	1.75
4,302.00	3.82	346.34	4,282.54	278.20	-73.76	87.49	1.44
4,396.00	2.17	347.26	4,376.41	282.98	-74.89	88.86	1.76
4,491.00	0.76	15.47	4,471.38	285.34	-75.12	89.20	1.62
4,586.00	1.68	32.23	4,566.36	287.13	-74.21	88.38	1.03
4,681.00	1.02	12.20	4,661.33	289.13	-73.29	87.56	0.84
4,775.00	0.80	356.42	4,755.32	290.60	-73.15	87.50	0.35

Design Report for Wells Ranch AA35-69-1HNB - Final Surveys

Measured Depth (usft)	Inclination (°)	Azimuth (°)	Vertical Depth (usft)	+N/-S (usft)	+E/-W (usft)	Vertical Section (usft)	Dogleg Rate (°/100usft)
4,870.00	0.57	257.10	4,850.31	291.16	-73.65	88.03	1.11
4,965.00	1.11	210.84	4,945.30	290.26	-74.59	88.92	0.87
5,060.00	1.05	177.30	5,040.29	288.60	-75.02	89.26	0.66
5,155.00	0.68	107.45	5,135.28	287.57	-74.44	88.63	1.09
5,250.00	1.21	140.23	5,230.27	286.63	-73.26	87.41	0.78
5,344.00	1.63	128.23	5,324.24	285.04	-71.57	85.65	0.55
5,439.00	0.50	163.97	5,419.22	283.80	-70.40	84.41	1.32
5,534.00	0.20	153.46	5,514.22	283.25	-70.21	84.20	0.32
5,629.00	1.08	124.36	5,609.21	282.60	-69.40	83.35	0.96
5,723.00	0.91	158.42	5,703.20	281.41	-68.39	82.29	0.64
5,818.00	1.09	155.78	5,798.18	279.88	-67.74	81.56	0.20
5,911.00	1.63	123.08	5,891.16	278.35	-66.27	80.02	0.99
5,976.00	1.46	110.23	5,956.14	277.56	-64.72	78.43	0.59
6,006.00	1.38	114.36	5,986.13	277.28	-64.03	77.73	0.43
6,054.00	3.76	247.26	6,034.10	276.43	-64.96	78.61	10.01
6,101.00	12.10	258.84	6,080.61	274.88	-71.22	84.79	17.98
6,149.00	14.50	258.97	6,127.32	272.76	-82.06	95.51	5.00
6,196.00	17.75	262.13	6,172.46	270.65	-94.93	108.26	7.16
6,244.00	20.34	268.95	6,217.84	269.49	-110.53	123.78	7.11
6,291.00	23.47	266.13	6,261.44	268.71	-128.04	141.23	7.02
6,339.00	28.03	269.67	6,304.66	268.00	-148.86	162.00	10.02
6,385.00	31.39	273.62	6,344.62	268.70	-171.64	184.78	8.45
6,433.00	34.79	273.97	6,384.82	270.43	-197.78	210.97	7.09
6,480.00	39.09	273.21	6,422.38	272.19	-225.96	239.21	9.20
6,528.00	44.26	272.61	6,458.22	273.80	-257.83	271.11	10.80
6,575.00	50.44	271.77	6,490.05	275.11	-292.36	305.66	13.21
6,623.00	54.24	271.35	6,519.37	276.14	-330.33	343.65	7.95
6,670.00	56.32	271.77	6,546.14	277.20	-368.95	382.27	4.49
6,718.00	59.38	271.22	6,571.68	278.25	-409.57	422.89	6.45
6,764.00	64.80	268.93	6,593.21	278.29	-450.20	463.47	12.58
6,812.00	69.92	265.73	6,611.68	276.20	-494.43	507.54	12.31
6,859.00	75.50	267.26	6,625.64	273.47	-539.20	552.12	12.27
6,907.00	80.68	268.83	6,635.55	271.87	-586.12	598.91	11.26
6,951.00	84.76	270.56	6,641.12	271.64	-629.76	642.48	10.06
6,998.00	86.56	270.43	6,644.68	272.05	-676.62	689.30	3.84
7" Casing @ 6998' MD, 6644.68' TVD							
7,034.00	87.94	270.33	6,646.41	272.29	-712.58	725.23	3.84
7,081.00	88.06	270.26	6,648.05	272.53	-759.55	772.15	0.30
7,175.00	89.08	270.24	6,650.39	272.94	-853.52	866.02	1.09
7,270.00	89.63	270.48	6,651.46	273.53	-948.51	960.93	0.63
7,364.00	88.92	270.30	6,652.65	274.17	-1,042.50	1,054.83	0.78
7,459.00	88.74	269.31	6,654.59	273.85	-1,137.48	1,149.68	1.06
7,554.00	90.62	268.70	6,655.12	272.20	-1,232.46	1,244.46	2.08
7,649.00	89.32	266.27	6,655.17	268.03	-1,327.35	1,339.03	2.90
7,744.00	90.61	266.67	6,655.23	262.18	-1,422.17	1,433.44	1.42
7,839.00	91.91	268.57	6,653.14	258.24	-1,517.06	1,528.02	2.42
7,934.00	91.05	268.17	6,650.69	255.54	-1,611.99	1,622.70	1.00
8,029.00	90.68	269.31	6,649.25	253.45	-1,706.95	1,717.44	1.26
8,123.00	91.45	270.22	6,647.50	253.06	-1,800.94	1,811.29	1.27
8,218.00	91.82	270.60	6,644.79	253.74	-1,895.89	1,906.16	0.56
8,313.00	90.19	272.46	6,643.13	256.28	-1,990.84	2,001.11	2.60

Design Report for Wells Ranch AA35-69-1HNB - Final Surveys

Measured Depth (usft)	Inclination (°)	Azimuth (°)	Vertical Depth (usft)	+N/-S (usft)	+E/-W (usft)	Vertical Section (usft)	Dogleg Rate (°/100usft)
8,408.00	89.85	273.13	6,643.09	260.91	-2,085.72	2,096.11	0.79
8,502.00	87.53	270.02	6,645.24	263.50	-2,179.65	2,190.05	4.13
8,597.00	89.97	270.37	6,647.32	263.82	-2,274.62	2,284.91	2.59
8,692.00	88.33	269.01	6,648.73	263.31	-2,369.60	2,379.75	2.24
8,787.00	87.81	269.86	6,651.93	262.37	-2,464.54	2,474.53	1.05
8,882.00	87.78	269.29	6,655.58	261.66	-2,559.47	2,569.31	0.60
8,976.00	89.17	270.53	6,658.08	261.52	-2,653.43	2,663.14	1.98
9,071.00	91.02	272.17	6,657.92	263.76	-2,748.39	2,758.10	2.60
9,166.00	90.12	269.77	6,656.98	265.36	-2,843.37	2,853.04	2.70
9,261.00	87.31	268.66	6,659.11	264.06	-2,938.32	2,947.82	3.18
9,356.00	86.52	268.78	6,664.22	261.94	-3,033.16	3,042.43	0.84
9,451.00	87.32	266.92	6,669.33	258.38	-3,127.95	3,136.93	2.13
9,545.00	90.12	266.91	6,671.43	253.33	-3,221.78	3,230.39	2.98
9,640.00	90.49	267.76	6,670.92	248.91	-3,316.68	3,324.95	0.98
9,735.00	91.05	269.69	6,669.64	246.80	-3,411.64	3,419.69	2.12
9,830.00	90.40	267.93	6,668.44	244.82	-3,506.61	3,514.44	1.97
9,924.00	91.70	270.41	6,666.72	243.46	-3,600.57	3,608.22	2.98
10,019.00	91.82	271.35	6,663.80	244.92	-3,695.52	3,703.12	1.00
10,114.00	91.32	271.83	6,661.20	247.56	-3,790.44	3,798.06	0.73
10,209.00	89.57	270.86	6,660.46	249.79	-3,885.41	3,893.02	2.11
10,303.00	91.05	269.88	6,659.95	250.39	-3,979.40	3,986.93	1.89
10,398.00	89.85	269.02	6,659.21	249.48	-4,074.39	4,081.76	1.55
10,493.00	91.57	270.28	6,658.03	248.90	-4,169.38	4,176.60	2.24
10,588.00	89.48	268.34	6,657.16	247.76	-4,264.36	4,271.40	3.00
10,683.00	90.40	268.38	6,657.26	245.04	-4,359.32	4,366.11	0.97
10,777.00	92.56	270.43	6,654.83	244.06	-4,453.27	4,459.90	3.17
10,872.00	90.22	270.25	6,652.53	244.62	-4,548.24	4,554.77	2.47
10,967.00	90.49	270.79	6,651.94	245.49	-4,643.23	4,649.69	0.64
11,062.00	90.34	270.30	6,651.25	246.39	-4,738.22	4,744.61	0.54
11,157.00	88.74	270.29	6,652.01	246.88	-4,833.21	4,839.51	1.68
11,185.00	87.63	270.27	6,652.90	247.02	-4,861.20	4,867.47	3.96
Final MWD Survey @ 11185.00ft							
11,250.00	87.63	270.27	6,655.59	247.32	-4,926.14	4,932.35	0.00
Straight Line Proj @ 11250' MD, 6655.59' TVD							

Design Annotations

Measured Depth (usft)	Vertical Depth (usft)	Local Coordinates		Comment
		+N/-S (usft)	+E/-W (usft)	
608.00	607.94	-6.43	4.64	First MWD Survey @ 608.00ft
724.00	723.94	-6.85	4.82	First MWD Survey @ 724.00ft
11,185.00	6,652.90	247.02	-4,861.20	Final MWD Survey @ 11185.00ft
11,250.00	6,655.59	247.32	-4,926.14	Straight Line Proj @ 11250' MD, 6655.59' TVD

Vertical Section Information

Angle Type	Target	Azimuth (°)	Origin Type	Origin +N/-S (usft)	Origin +E/-W (usft)	Start TVD (usft)
Target	Wells Ranch AA35-69-1HNB_BHL	272.85	Slot	0.00	0.00	0.00

Design Report for Wells Ranch AA35-69-1HNB - Final Surveys

Survey tool program

From (usft)	To (usft)	Survey/Plan	Survey Tool
241.00	608.00	Surface Gyros	Flexi-Shot
724.00	6,951.00	MWD Surveys - Intermediate	MWD+IFR1+MS_WY
7,034.00	11,185.00	MWD Surveys - Production	MWD+IFR1+MS_WY

Casing Details

Measured Depth (usft)	Vertical Depth (usft)	Name	Casing Diameter (")	Hole Diameter (")
6,998.00	6,644.68	7" Casing @ 6998' MD, 6644.68' TVD	7	8-3/4

Wellbore Targets

Target Name - hit/miss target - Shape	Dip Angle (°)	Dip Dir. (°)	TVD (usft)	+N/-S (usft)	+E/-W (usft)	Northing (usft)	Easting (usft)	Latitude	Longitude
Wells Ranch AA35-69- - actual wellpath misses target center by 0.02usft at 0.00usft MD (0.00 TVD, 0.00 N, 0.00 E)	0.00	0.00	0.00	0.02	0.00	1,408,144.50	3,307,779.10	40.448490	-104.394090
- Polygon									
Point 1				0.00	110.02	-5,005.26	1,408,254.52	3,302,774.03	
Point 2				0.00	-4,288.35	-4,926.19	1,403,856.31	3,302,853.10	
Point 3				0.00	-4,230.63	-585.25	1,403,914.03	3,307,193.87	
Point 4				0.00	142.68	-628.97	1,408,287.18	3,307,150.16	
Point 5				0.00	110.02	-5,005.26	1,408,254.52	3,302,774.03	
Wells Ranch AA35-69- - actual wellpath misses target center by 0.02usft at 0.00usft MD (0.00 TVD, 0.00 N, 0.00 E)	0.00	0.00	0.00	0.02	0.00	1,408,144.50	3,307,779.10	40.448490	-104.394090
- Point									
Wells Ranch AA35-69- - actual wellpath misses target center by 0.02usft at 0.00usft MD (0.00 TVD, 0.00 N, 0.00 E)	0.00	0.00	0.00	0.02	0.00	1,408,144.50	3,307,779.10	40.448490	-104.394090
- Polygon									
Point 1				0.00	570.04	-5,465.28	1,408,714.52	3,302,314.03	
Point 2				0.00	-4,748.37	-5,386.20	1,403,396.31	3,302,393.10	
Point 3				0.00	-4,690.65	-125.24	1,403,454.03	3,307,653.87	
Point 4				0.00	602.70	-168.95	1,408,747.18	3,307,610.16	
Point 5				0.00	570.04	-5,465.28	1,408,714.52	3,302,314.03	
Wells Ranch AA35-69- - actual wellpath misses target center by 3.82usft at 11250.00usft MD (6655.59 TVD, 247.32 N, -4926.14 E)	0.00	0.00	6,658.61	245.11	-4,926.89	1,408,389.59	3,302,852.40	40.449330	-104.411780
- Point									

Directional Difficulty Index

Average Dogleg over Survey:	1.94 °/100usft	Maximum Dogleg over Survey:	17.98 °/100usft at 6,101.00 usft
Net Tortousity applicable to Plans:	0.99 °/100usft	Directional Difficulty Index:	6.282

Audit Info

**North Reference Sheet for Sec. 36-T6N-R63W (Wells Ranch AA35) - Wells Ranch
AA35-69-1HNB**

All data is in US Feet unless otherwise stated. Directions and Coordinates are relative to Grid North Reference.

Vertical Depths are relative to RKB = 30 @ 4839.00usft (H&P 321). Northing and Easting are relative to Wells Ranch AA35-69-1HNB

Coordinate System is US State Plane 1983, Colorado Northern Zone using datum North American Datum 1983, ellipsoid GRS 1980

Projection method is Lambert Conformal Conic (2 parallel)

Central Meridian is -105.500000°, Longitude Origin:0.000000°, Latitude Origin:40.783333°

False Easting: 3,000,000.00usft, False Northing: 1,000,000.00usft, Scale Reduction: 0.99996279

Grid Coordinates of Well: 1,408,144.48 usft N, 3,307,779.10 usft E

Geographical Coordinates of Well: 40° 26' 54.56" N, 104° 23' 38.72" W

Grid Convergence at Surface is: 0.71°

Based upon Minimum Curvature type calculations, at a Measured Depth of 11,250.00usft
the Bottom Hole Displacement is 4,932.35usft in the Direction of 272.87° (Grid).

Magnetic Convergence at surface is: -7.63° (15 February 2014, , BGGM2013)

