

BILL BARRETT CORPORATION

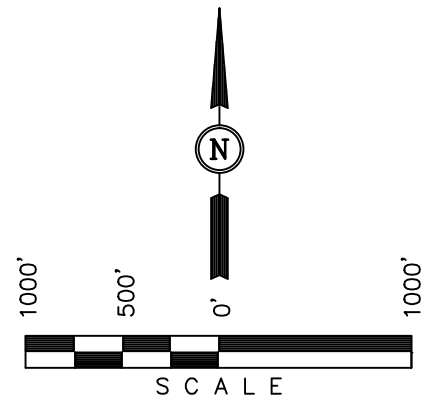
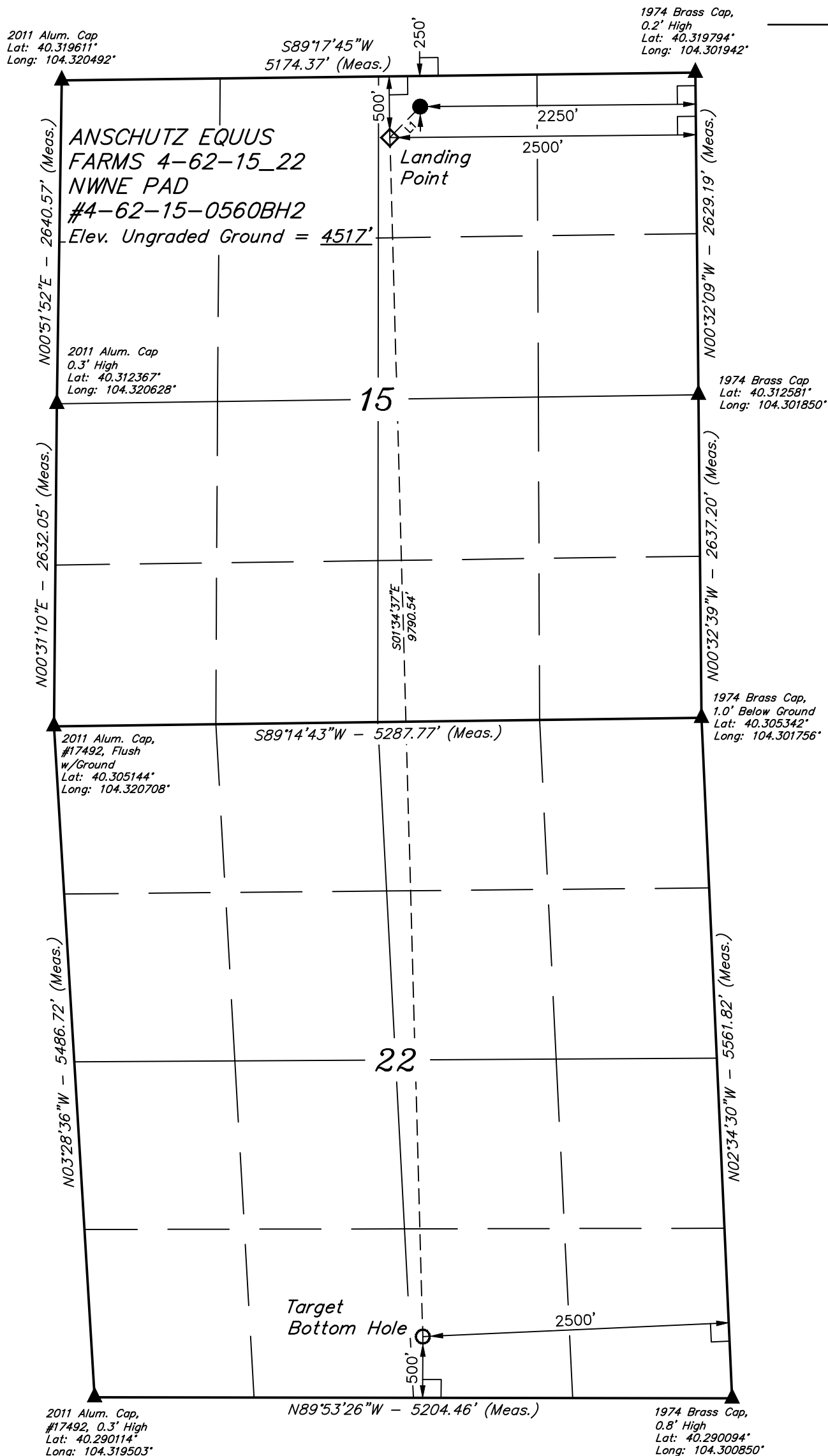
Well location, ANSCHUTZ EQUUS FARMS
4-62-15_22 NWNE PAD #4-62-15-0560BH2,
located as shown in the NW 1/4 NE 1/4 of
Section 15, T4N, R62W, 6th P.M., Weld County,
Colorado.

BASIS OF ELEVATION

SPOT ELEVATION LOCATED AT THE NORTHEAST CORNER OF SECTION 24, T5N, R62W, 6th P.M. TAKEN FROM THE POINT OF ROCKS, QUADRANGLE, COLORADO, WELD COUNTY, 7.5 MINUTE QUAD (TOPOGRAPHIC MAP) PUBLISHED BY THE UNITED STATES DEPARTMENT OF THE INTERIOR, GEOLOGICAL SURVEY. SAID ELEVATION IS MARKED AS BEING 4530 FEET.






BASIS OF BEARINGS

BASIS OF BEARINGS IS A G.P.S. OBSERVATION.



LINE TABLE		
LINE	DIRECTION	LENGTH
L1	S44°23'32"W	354.07'

LEGEND:

-  = 90° SYMBOL
 = PROPOSED WELL HEAD.
 = PROPOSED LANDING POINT.
 = PROPOSED TARGET BOTTOM HOLE.
 = SECTION CORNERS LOCATED.

CERTIFICATE

THIS IS TO CERTIFY THAT THE ABOVE PLAT WAS PREPARED FROM
FIELD NOTES OF ACTUAL SURVEYS MADE BY ME OR UNDER MY
SUPERVISION AND THAT THE SAME ARE TRUE AND CORRECT TO THE
BEST OF MY KNOWLEDGE AND BELIEF.

REGISTERED LAND SURVEYOR
REGISTRATION NO. 28285
STATE OF COLORADO

NAD 83 (TARGET BOTTOM HOLE)	NAD 83 (LANDING POINT)	NAD 83 (SURFACE LOCATION)
LATITUDE = 40°17'29.32" (40.291478)	LATITUDE = 40°19'06.01" (40.318336)	LATITUDE = 40°19'08.51" (40.319031)
LONGITUDE = 104°18'35.65" (104.309903)	LONGITUDE = 104°18'39.19" (104.310886)	LONGITUDE = 104°18'36.00" (104.310000)
NAD 27 (TARGET BOTTOM HOLE)	NAD 27 (LANDING POINT)	NAD 27 (SURFACE LOCATION)
LATITUDE = 40°17'29.39" (40.291497)	LATITUDE = 40°19'06.07" (40.318353)	LATITUDE = 40°19'08.57" (40.319047)
LONGITUDE = 104°18'33.82" (104.309394)	LONGITUDE = 104°18'37.36" (104.310378)	LONGITUDE = 104°18'34.17" (104.309492)
STATE PLANE NAD 83	STATE PLANE NAD 83	STATE PLANE NAD 83
N: 1351253.94 E: 3331975.36	N: 1361033.48 E: 3331569.40	N: 1361289.85 E: 3331813.47
STATE PLANE NAD 27	STATE PLANE NAD 27	STATE PLANE NAD 27
N: 351256.55 E: 2332125.65	N: 361035.84 E: 2331719.60	N: 361292.20 E: 2331963.67

PDOP = 1.4

UTAH ENGINEERING & LAND SURVEYING
 85 SOUTH 200 EAST - VERNAL, UTAH 84078
 (435) 789-1017

SCALE 1" = 1000'	DATE SURVEYED: 01-21-14	DATE DRAWN: 02-19-14
PARTY ZANE BULLARD N.J. J.W.	REFERENCES G.L.O. PLAT	
WEATHER COLD	FILE BILL BARRETT CORPORATION	