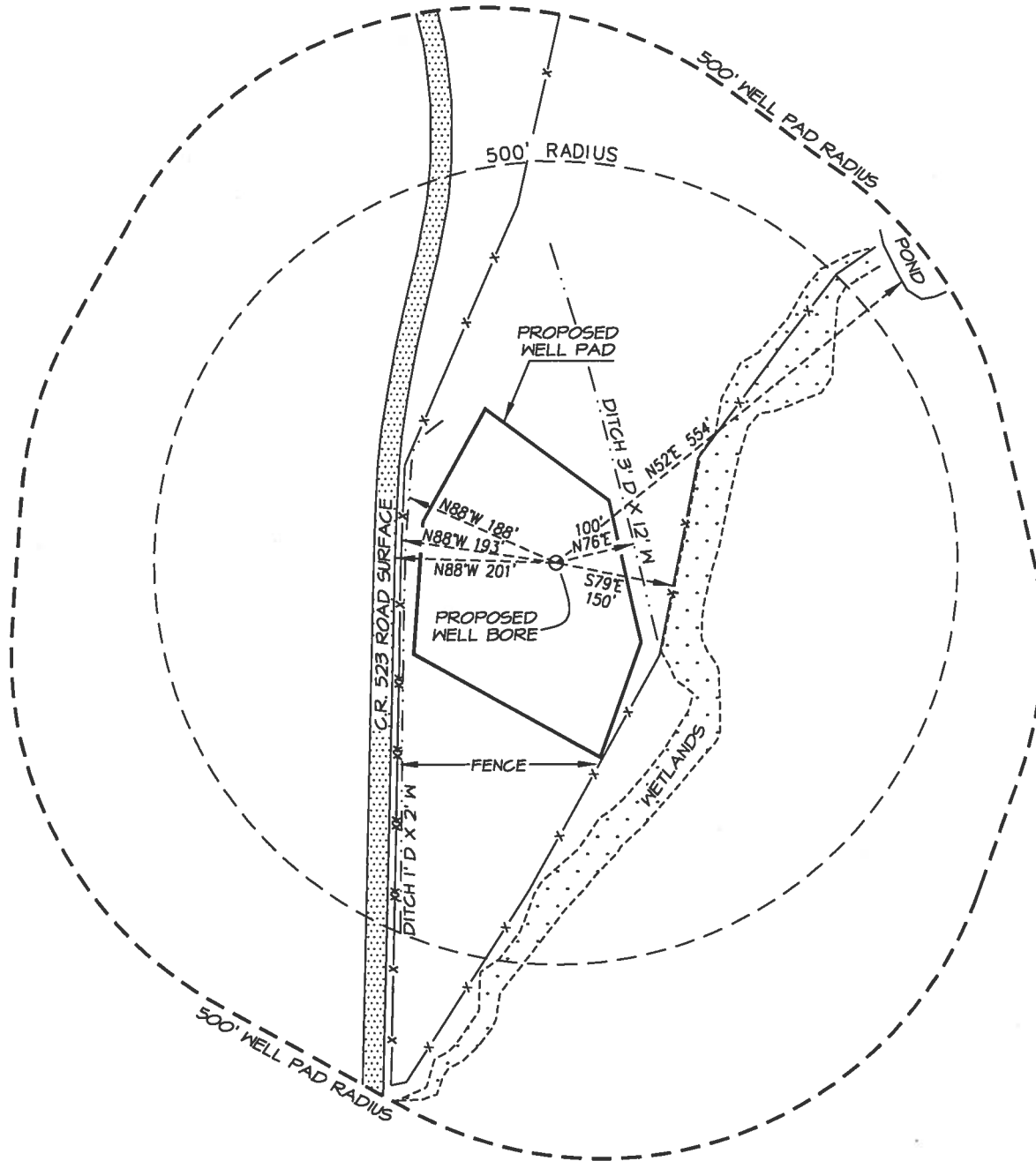


CATAMOUNT ENERGY PARTNERS: LYNCH 34-6-18 #2
1734' FNL, 209' FWL, SECTION 18U, T-34-N, R-6-W, S.U.L., N.M.P.M.,
LA PLATA COUNTY, CO. GROUND LEVEL ELEVATION: 6858'

500' RADUIS VISIBLE IMPROVEMENT DETAIL

SURFACE USE = GRASSLAND



DRAWING SCALE: 1" = 200'

DATE DRAWN: 9/17/14

NORTHSTAR SURVEYING & MAPPING, INC.

FILE NO: CEP04CFC

DRAWN BY: K.R.

CHECKED BY: K.R.

CATAMOUNT ENERGY PARTNERS: LYNCH 34-6-18 #1
1774' FNL, 211' FWL, SECTION 18U, T-34-N, R-6-W, S.U.L., N.M.P.M.,
LA PLATA COUNTY, CO. GROUND LEVEL ELEVATION: 6858'

500' RADUIS VISIBLE IMPROVEMENT DETAIL

SURFACE USE = GRASSLAND

