

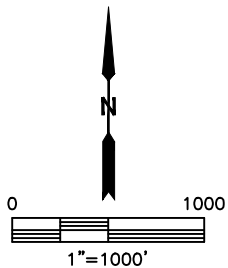
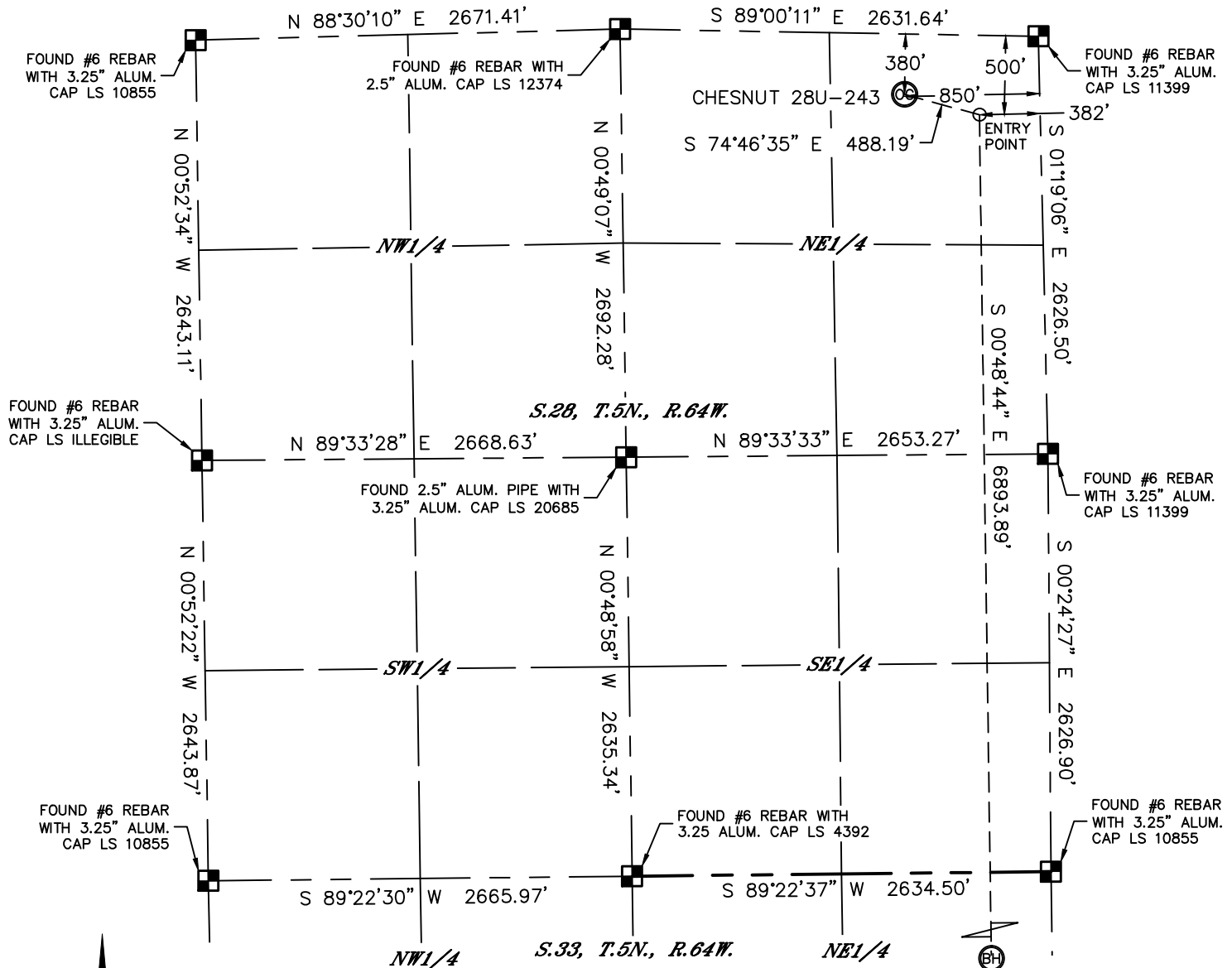


Lat40°, Inc. 1635 Foxtrail Drive, Suite 325 Loveland, CO 970-776-3321

# WELL LOCATION CERTIFICATE

THIS MAP DOES NOT REPRESENT A BOUNDARY SURVEY

SECTION: 28  
TOWNSHIP: 5N  
RANGE: 64W



In accordance with a request from Jeff Dillingham with PDC ENERGY Lat40°, Inc. has determined the surface location of the CHESNUT 28U-243 to be 380' from the NORTH line and 850' from the EAST line as measured at right angles from the section lines of Section 28, Township 5 North, Range 64 West and the bottom hole to be 2130' from the NORTH line and 382' from the EAST line as measured at right angles from the section lines of Section 33, Township 5 North, Range 64 West of the Sixth Principal Meridian, County of Weld, State of Colorado.

I hereby state that this Well Location Certificate was prepared by me, or under my direct supervision, that the fieldwork was completed on 11/6/2013, for and on behalf of PDC ENERGY. That this is not a Land Survey Plat or an Improvement Survey Plat, and that it is not to be relied upon for establishment of fence, building, or other future improvement lines.

**SURFACE LOCATION**  
LAT: 40.37647°N  
LONG: 104.54830°W  
PDOP: 1.5  
ELEV: 4620'  
1/4,1/4: NE1/4NE1/4

**BOTTOM HOLE**  
LAT: 40.35719°N  
LONG: 104.54653°W

**ENTRY POINT**  
LAT: 40.37610°N  
LONG: 104.54662°W

## NOTE:

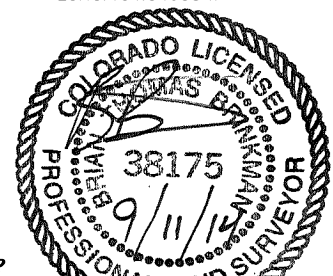
- 1) Bearings shown are Grid Bearings of the Colorado State Plane Coordinate System, North Zone, North American Datum 1983/2007. The lineal dimensions as contained herein are based upon the "U.S. Survey Foot."
- 2) Ground elevations are based on an observed GPS elevation (NAVD 1988 DATUM).
- 3) IMPROVEMENTS: See LOCATION DRAWING for all visible improvements within 500' of disturbed area.
- 4) SURFACE USE: RANGELAND
- 5) INSTRUMENT OPERATOR: BRIAN ROTTINGHAUS
- 6) NEAREST CULTURAL ITEMS:  
BUILDING: ±675' E  
BUILDING UNIT: ±710' E  
HIGH OCCUPANCY BUILDING UNIT: ±3290' NW  
DESIGNATED OUTSIDE ACTIVITY AREA: 5280'+  
PUBLIC ROAD: (CR 55) 848' E  
ABOVEGROUND UTILITY: 400' N  
RAILROAD: ±3110' N  
PROPERTY LINE: 380' N

## LEGEND

- = ALIQUOT MONUMENT AS DESCRIBED  
○ = CALCULATED POSITION

## SHEET 1 OF 2

Brian T. Brinkman—On Behalf of Lat40°, Inc.  
Colorado Licensed Professional  
Land Surveyor No. 38175  
DATE: 9/11/2014  
PROJECT#: 2013151





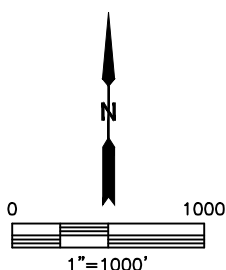
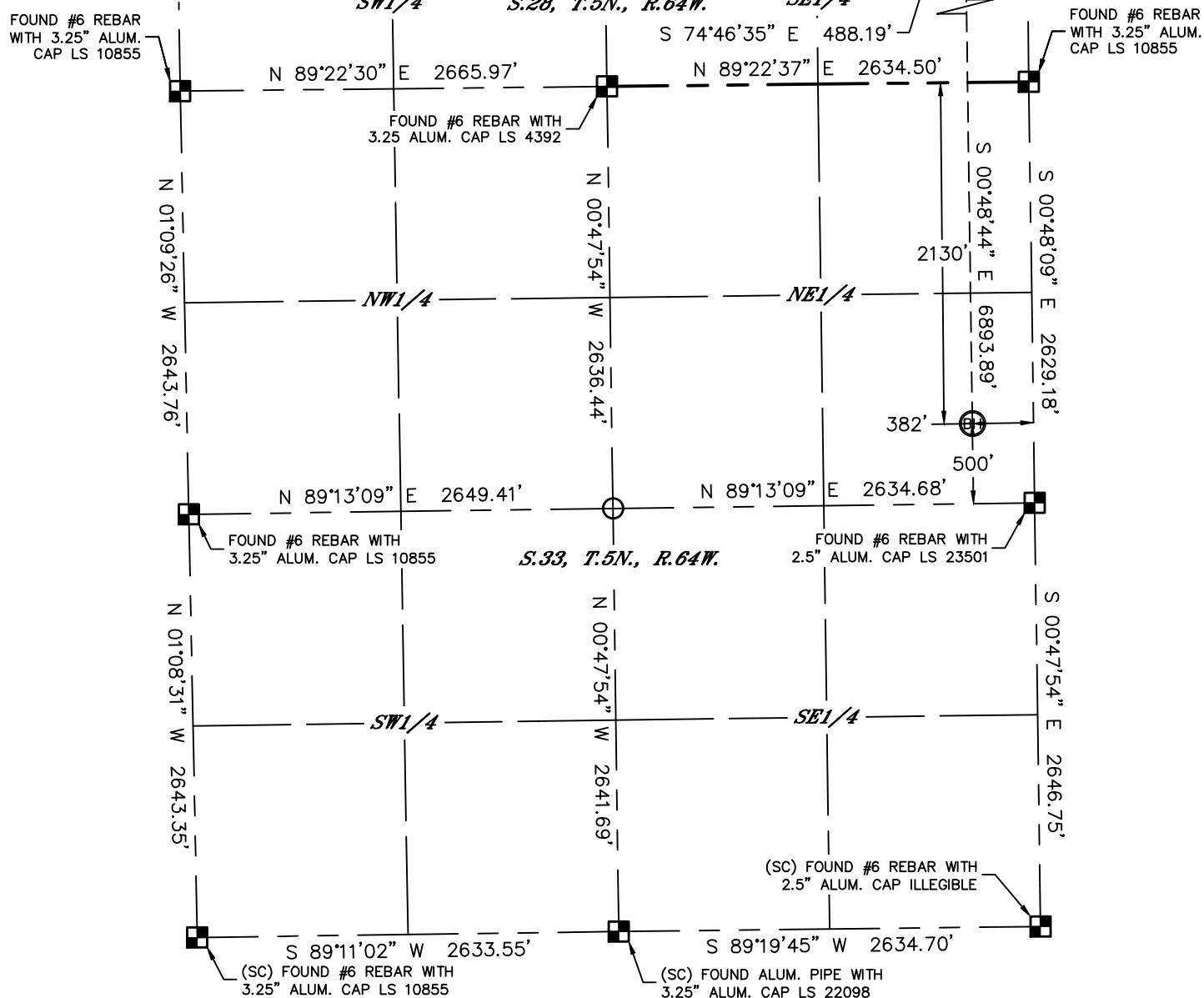
Lat40°, Inc. 1635 Foxtrail Drive, Suite 325 Loveland, CO 970-776-3321

# WELL LOCATION CERTIFICATE

THIS MAP DOES NOT REPRESENT A BOUNDARY SURVEY

SECTION: 28  
TOWNSHIP: 5N  
RANGE: 64W

CHESNUT 28U-243



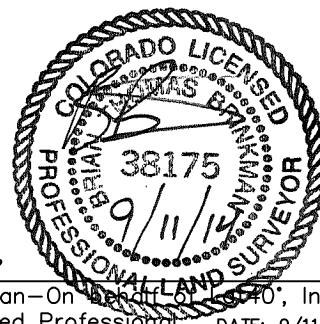
## LEGEND

- = ALIQUOT MONUMENT AS DESCRIBED
- = CALCULATED POSITION

SHEET 2 OF 2

Brian T. Brinkman—On Behalf of Lat40°, Inc.  
Colorado Licensed Professional  
Land Surveyor No. 38175

DATE: 9/11/2014  
PROJECT#: 2013151



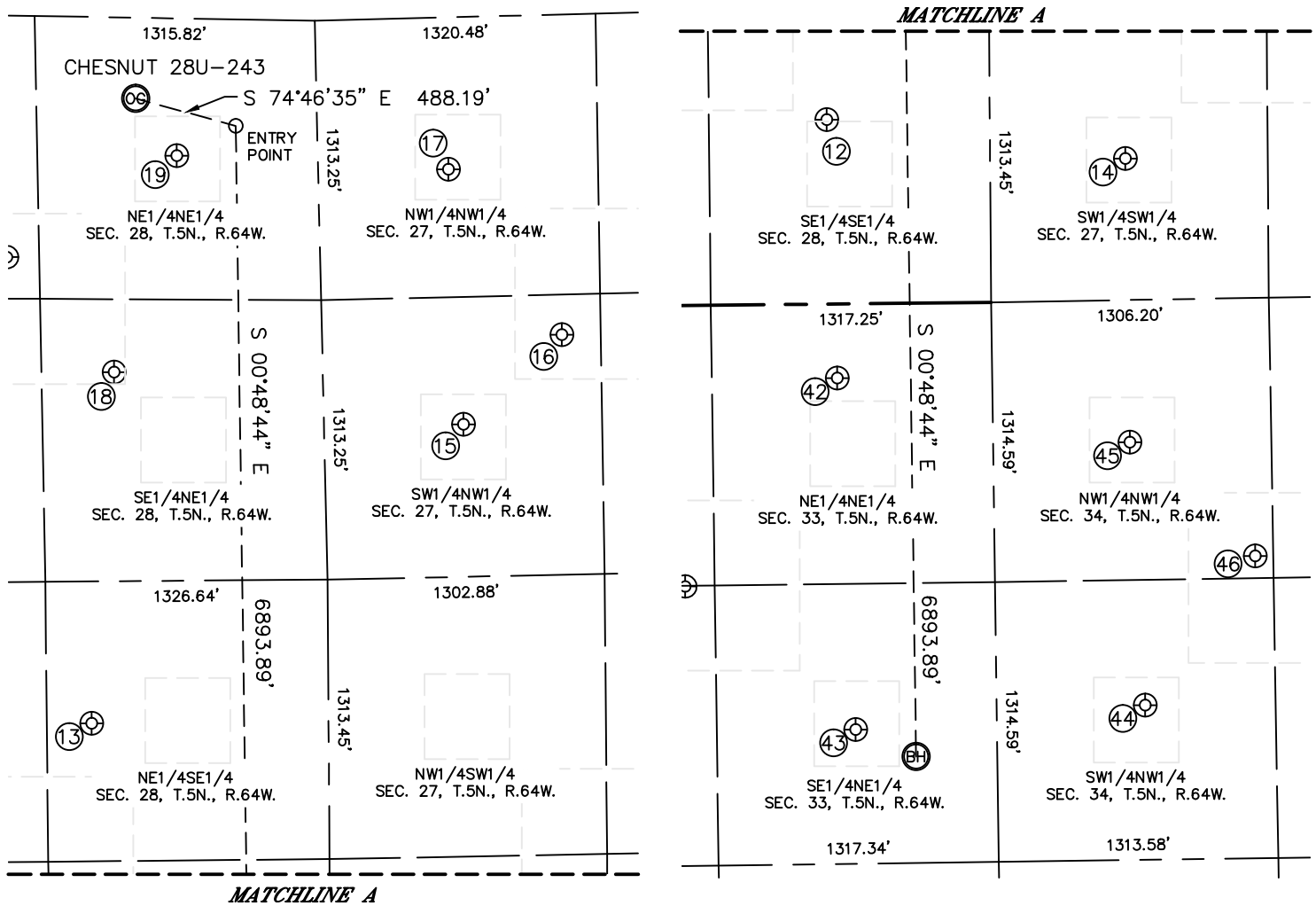


Lat40°, Inc. 1635 Foxtrail Drive, Suite 325 Loveland, CO 970-776-3321

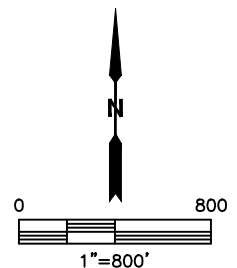
# SITE SKETCH

CHESNUT 28U-243

SECTION: 28  
TOWNSHIP: 5N  
RANGE: 64W



WELL NO.	WELL NAME	SHL FOOTAGE				SHL LAT°	SHL LONG°	PDOP	ELEV (FT.)	1/4/1/4
12	P & A FARMS 28-1	866	FSL	767	FEL	40.36541	-104.54792	3.0	4653	SESE
13	P & A FARMS 28-2	1963	FSL	1114	FEL	40.36842	-104.54916	2.9	4634	NESE
14	WHITE 27-8	665	FSL	636	FWL	40.36487	-104.54289	2.2	4634	SWSW
15	WHITE 27-6	1913	FNL	656	FWL	40.37222	-104.54283	1.8	4613	SWNW
16	WHITE 5	1505	FNL	1127	FWL	40.37336	-104.54116	2.0	4608	SWNW
17	WHITE 27-2	714	FNL	612	FWL	40.37552	-104.54304	1.8	4614	NWNW
18	HALL 28-1	1668	FNL	981	FEL	40.37294	-104.54871	1.8	4615	SENE
19	HALL 28-2	645	FNL	662	FEL	40.37573	-104.54762	1.6	4615	NENE
42	HENDRICKS 33-3	348	FNL	728	FEL	40.36208	-104.54779	1.7	4643	NENE
43	HENDRICKS 33-1	2000	FNL	664	FEL	40.35754	-104.54754	1.8	4658	SENE
44	WHITE 12-34	1905	FNL	698	FWL	40.35782	-104.54266	2.0	4650	SWNW
45	WHITE 34-2	669	FNL	643	FWL	40.36121	-104.54287	2.1	4642	NWNW
46	WHITE 1-1	1212	FNL	1225	FWL	40.35972	-104.54078	2.1	4643	NWNW



DATE: 9/11/2014  
PROJECT#: 2013151