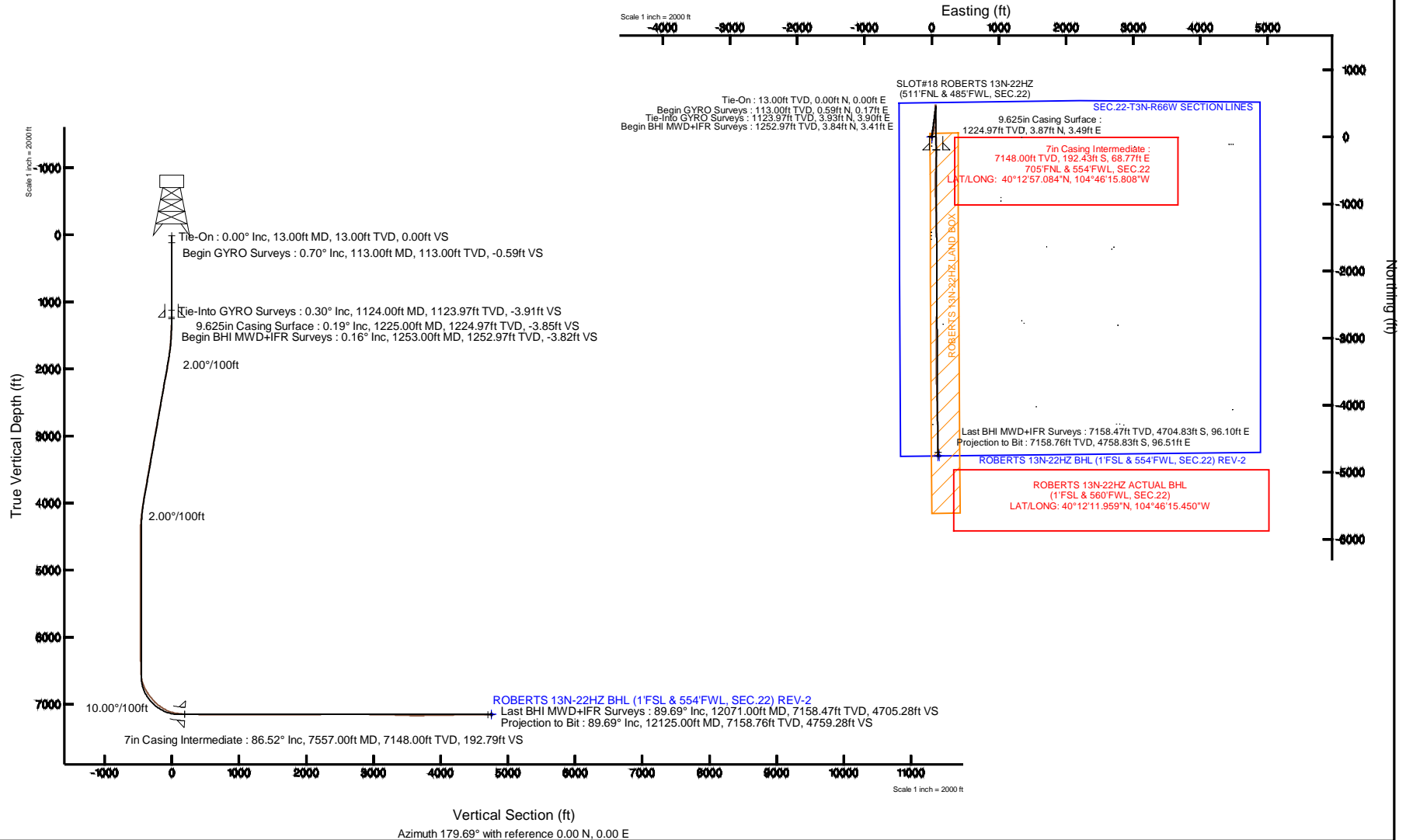


Location:	COLORADO	Slot:	SLOT#18 ROBERTS 13N-22HZ (511'FNL & 485'FWL, SEC.22)
Field:	WELD COUNTY (KERR MCGEE)	Well:	ROBERTS 13N-22HZ
Facility:	SEC.22-T3N-R66W	Wellbore:	ROBERTS 13N-22HZ PWB

Plot reference wellpath is ROBERTS 13N-22H2 (REV-B.0) PWP	
True vertical depths are referenced to ENSIGN 145 (13KB) (RKB)	Grid System: NAD83 / Lambert Colorado SP, Northern Zone (501). US feet
Measured depths are referenced to ENSIGN 145 (13KB) (RKB)	North Reference: True north
ENSGN 145 (13KB) (RKB) to Mean Sea Level: 4896 feet	Scale: True distance
Mean Sea Level to Mud line (At Slot: SLOT#16 ROBERTS 13N-22H2 (511FTNL & 485FWL, SEC 22): 0 feet	Depths are in feet
Coordinates are in feet referenced to Slot	Created by: precin on 11/Sep/2014



Actual Wellpath Report

ROBERTS 13N-22HZ AWP

Page 1 of 6

REFERENCE WELLPATH IDENTIFICATION			
Operator	KERR-MCGEE OIL & GAS ONSHORE LP	Slot	SLOT#18 ROBERTS 13N-22HZ (511'FNL & 485'FWL, SEC.22)
Area	COLORADO	Well	ROBERTS 13N-22HZ
Field	WELD COUNTY (KERR MCGEE)	Wellbore	ROBERTS 13N-22HZ AWB
Facility	SEC.22-T3N-R66W		

REPORT SETUP INFORMATION			
Projection System	NAD83 / Lambert Colorado SP, Northern Zone (501), US feet	Software System	WellArchitect® 4.0.0
North Reference	True	User	Precain
Scale	0.999957	Report Generated	11/Sep/2014 at 07:57
Convergence at slot	n/a	Database/Source file	WellArchitectDB/ROBERTS_13N-22HZ_AWB.xml

WELLPATH LOCATION						
	Local coordinates		Grid coordinates		Geographic coordinates	
	North[ft]	East[ft]	Easting[US ft]	Northing[US ft]	Latitude	Longitude
Slot Location	908.95	-1040.00	3203496.79	1322507.38	40°12'58.986"N	104°46'16.694"W
Facility Reference Pt			3204544.22	1321607.09	40°12'50.004"N	104°46'03.288"W
Field Reference Pt			3197771.84	1268891.29	40°04'09.600"N	104°47'36.000"W

WELLPATH DATUM			
Calculation method	Minimum curvature	ENSIGN 145 (13'KB) (RKB) to Facility Vertical Datum	4898.00ft
Horizontal Reference Pt	Slot	ENSIGN 145 (13'KB) (RKB) to Mean Sea Level	4898.00ft
Vertical Reference Pt	ENSIGN 145 (13'KB) (RKB)	ENSIGN 145 (13'KB) (RKB) to Mud Line at Slot (SLOT#18 ROBERTS 13N-22HZ (511'FNL & 485'FWL, SEC.22))	4898.00ft
MD Reference Pt	ENSIGN 145 (13'KB) (RKB)	Section Origin	N 0.00, E 0.00 ft
Field Vertical Reference	Mean Sea Level	Section Azimuth	179.69°

Actual Wellpath Report

ROBERTS 13N-22HZ AWP

Page 2 of 6

REFERENCE WELLPATH IDENTIFICATION			
Operator	KERR-MCGEE OIL & GAS ONSHORE LP	Slot	SLOT#18 ROBERTS 13N-22HZ (511'FNL & 485'FWL, SEC.22)
Area	COLORADO	Well	ROBERTS 13N-22HZ
Field	WELD COUNTY (KERR MCGEE)	Wellbore	ROBERTS 13N-22HZ AWP
Facility	SEC.22-T3N-R66W		

WELLPATH DATA (131 stations) † = interpolated/extrapolated station

MD [ft]	Inclination [°]	Azimuth [°]	TVD [ft]	Vert Sect [ft]	North [ft]	East [ft]	Latitude	Longitude	DLS [°/100ft]	Comments
0.00†	0.000	15.830	0.00	0.00	0.00	0.00	40°12'58.986"N	104°46'16.694"W	0.00	
13.00	0.000	15.830	13.00	0.00	0.00	0.00	40°12'58.986"N	104°46'16.694"W	0.00	Tie-On
113.00	0.700	15.830	113.00	-0.59	0.59	0.17	40°12'58.992"N	104°46'16.692"W	0.70	Begin GYRO Surveys
213.00	0.610	25.460	212.99	-1.65	1.66	0.56	40°12'59.002"N	104°46'16.687"W	0.14	
313.00	0.570	63.520	312.99	-2.35	2.36	1.24	40°12'59.009"N	104°46'16.678"W	0.39	
413.00	0.620	85.650	412.98	-2.61	2.62	2.22	40°12'59.012"N	104°46'16.665"W	0.23	
513.00	0.300	116.640	512.98	-2.53	2.54	2.99	40°12'59.011"N	104°46'16.655"W	0.39	
613.00	0.060	34.500	612.98	-2.45	2.47	3.26	40°12'59.010"N	104°46'16.652"W	0.30	
713.00	0.290	349.570	712.98	-2.75	2.76	3.24	40°12'59.013"N	104°46'16.652"W	0.25	
813.00	0.450	20.460	812.97	-3.36	3.38	3.33	40°12'59.019"N	104°46'16.651"W	0.25	
913.00	0.370	55.230	912.97	-3.91	3.93	3.74	40°12'59.025"N	104°46'16.646"W	0.26	
1013.00	0.200	135.470	1012.97	-3.97	3.99	4.12	40°12'59.025"N	104°46'16.641"W	0.39	
1113.00	0.330	281.640	1112.97	-3.90	3.92	3.96	40°12'59.025"N	104°46'16.643"W	0.51	
1124.00	0.300	268.670	1123.97	-3.91	3.93	3.90	40°12'59.025"N	104°46'16.644"W	0.70	Tie-Into GYRO Surveys
1253.00	0.160	240.980	1252.97	-3.82	3.84	3.41	40°12'59.024"N	104°46'16.650"W	0.14	Begin BHI MWD+IFR Surveys
1440.00	2.930	351.910	1439.89	-8.43	8.44	2.51	40°12'59.069"N	104°46'16.662"W	1.60	
1533.00	3.730	23.160	1532.74	-13.56	13.58	3.36	40°12'59.120"N	104°46'16.651"W	2.10	
1627.00	5.170	24.410	1626.45	-20.21	20.24	6.32	40°12'59.186"N	104°46'16.613"W	1.54	
1721.00	6.640	25.610	1719.95	-28.95	29.00	10.42	40°12'59.273"N	104°46'16.560"W	1.57	
1908.00	10.110	18.590	1904.93	-54.21	54.32	20.32	40°12'59.523"N	104°46'16.432"W	1.93	
2002.00	9.690	16.350	1997.53	-69.59	69.73	25.18	40°12'59.675"N	104°46'16.369"W	0.61	
2095.00	11.600	12.920	2088.93	-86.19	86.35	29.48	40°12'59.839"N	104°46'16.314"W	2.16	
2189.00	10.930	11.410	2181.12	-104.12	104.30	33.35	40°13'00.017"N	104°46'16.264"W	0.78	
2407.00	9.960	356.850	2395.54	-143.19	143.39	36.41	40°13'00.403"N	104°46'16.225"W	1.29	
2469.00	9.650	354.260	2456.64	-153.72	153.92	35.59	40°13'00.507"N	104°46'16.235"W	0.87	
2563.00	10.500	356.600	2549.19	-170.12	170.30	34.29	40°13'00.669"N	104°46'16.252"W	1.00	
2653.00	10.350	4.920	2637.71	-186.36	186.55	34.50	40°13'00.829"N	104°46'16.249"W	1.68	
2743.00	10.400	3.180	2726.23	-202.52	202.71	35.65	40°13'00.989"N	104°46'16.235"W	0.35	
2833.00	10.500	4.740	2814.74	-218.79	219.00	36.77	40°13'01.150"N	104°46'16.220"W	0.33	
2923.00	10.350	3.960	2903.26	-235.03	235.23	38.01	40°13'01.311"N	104°46'16.204"W	0.23	
3013.00	10.260	4.200	2991.80	-251.08	251.29	39.16	40°13'01.469"N	104°46'16.189"W	0.11	
3103.00	9.410	5.780	3080.48	-266.39	266.61	40.48	40°13'01.621"N	104°46'16.172"W	0.99	
3193.00	10.820	4.150	3169.08	-282.12	282.35	41.84	40°13'01.776"N	104°46'16.155"W	1.60	
3283.00	10.410	5.410	3257.54	-298.64	298.87	43.21	40°13'01.939"N	104°46'16.137"W	0.52	
3373.00	9.560	6.410	3346.18	-314.15	314.40	44.81	40°13'02.093"N	104°46'16.116"W	0.96	
3463.00	9.390	3.620	3434.95	-328.90	329.15	46.11	40°13'02.239"N	104°46'16.100"W	0.54	
3553.00	9.890	6.520	3523.68	-343.90	344.16	47.45	40°13'02.387"N	104°46'16.082"W	0.77	
3643.00	9.640	6.300	3612.37	-359.06	359.33	49.16	40°13'02.537"N	104°46'16.060"W	0.28	
3733.00	10.610	8.550	3700.97	-374.73	375.01	51.22	40°13'02.692"N	104°46'16.034"W	1.16	
3823.00	10.360	8.700	3789.47	-390.91	391.20	53.67	40°13'02.852"N	104°46'16.002"W	0.28	
3913.00	9.350	8.380	3878.14	-406.13	406.44	55.96	40°13'03.002"N	104°46'15.973"W	1.12	
4003.00	9.320	7.590	3966.95	-420.57	420.89	57.99	40°13'03.145"N	104°46'15.946"W	0.15	
4093.00	8.650	3.420	4055.84	-434.55	434.87	59.36	40°13'03.283"N	104°46'15.929"W	1.04	
4183.00	7.280	4.840	4144.97	-446.98	447.31	60.24	40°13'03.406"N	104°46'15.917"W	1.54	
4273.00	5.330	0.670	4234.43	-456.84	457.17	60.77	40°13'03.504"N	104°46'15.911"W	2.22	

Actual Wellpath Report

ROBERTS 13N-22HZ AWP

Page 3 of 6

REFERENCE WELLPATH IDENTIFICATION

Operator	KERR-MCGEE OIL & GAS ONSHORE LP	Slot	SLOT#18 ROBERTS 13N-22HZ (511'FNL & 485'FWL, SEC.22)
Area	COLORADO	Well	ROBERTS 13N-22HZ
Field	WELD COUNTY (KERR MCGEE)	Wellbore	ROBERTS 13N-22HZ AWP
Facility	SEC.22-T3N-R66W		

WELLPATH DATA (131 stations) † = interpolated/extrapolated station

MD [ft]	Inclination [°]	Azimuth [°]	TVD [ft]	Vert Sect [ft]	North [ft]	East [ft]	Latitude	Longitude	DLS [°/100ft]	Comments
4363.00	3.740	354.730	4324.14	-463.94	464.28	60.55	40°13'03.574"N	104°46'15.913"W	1.84	
4453.00	1.950	343.060	4414.03	-468.34	468.66	59.84	40°13'03.617"N	104°46'15.923"W	2.08	
4543.00	1.370	299.090	4503.99	-470.33	470.65	58.45	40°13'03.637"N	104°46'15.941"W	1.50	
4636.00	0.110	175.150	4596.98	-470.79	471.10	57.49	40°13'03.641"N	104°46'15.953"W	1.54	
4726.00	0.560	143.480	4686.98	-470.35	470.66	57.75	40°13'03.637"N	104°46'15.950"W	0.52	
4906.00	0.500	226.290	4866.98	-469.10	469.42	57.71	40°13'03.625"N	104°46'15.950"W	0.39	
5311.00	0.220	273.260	5271.97	-467.93	468.24	55.66	40°13'03.613"N	104°46'15.977"W	0.10	
5716.00	0.430	254.950	5676.96	-467.59	467.89	53.41	40°13'03.610"N	104°46'16.005"W	0.06	
6122.00	0.470	305.340	6082.95	-468.18	468.46	50.58	40°13'03.615"N	104°46'16.042"W	0.09	
6301.00	1.980	141.380	6261.92	-466.18	466.46	51.91	40°13'03.596"N	104°46'16.025"W	1.36	
6508.00	1.570	159.770	6468.82	-460.71	461.01	55.13	40°13'03.542"N	104°46'15.983"W	0.34	
6572.00	2.470	179.220	6532.78	-458.50	458.81	55.45	40°13'03.520"N	104°46'15.979"W	1.75	
6617.00	6.840	182.160	6577.63	-454.85	455.16	55.36	40°13'03.484"N	104°46'15.980"W	9.72	
6662.00	10.520	183.590	6622.10	-448.07	448.38	55.00	40°13'03.417"N	104°46'15.985"W	8.19	
6707.00	15.280	181.070	6665.95	-438.04	438.34	54.63	40°13'03.318"N	104°46'15.990"W	10.65	
6752.00	20.530	178.760	6708.76	-424.22	424.52	54.69	40°13'03.181"N	104°46'15.989"W	11.77	
6797.00	26.080	179.680	6750.07	-406.42	406.72	54.92	40°13'03.005"N	104°46'15.986"W	12.36	
6842.00	30.630	180.280	6789.66	-385.05	385.36	54.92	40°13'02.794"N	104°46'15.986"W	10.13	
6887.00	33.380	180.500	6827.82	-361.21	361.51	54.76	40°13'02.558"N	104°46'15.988"W	6.12	
6932.00	35.610	179.210	6864.91	-335.73	336.03	54.83	40°13'02.307"N	104°46'15.987"W	5.21	
6977.00	37.960	176.720	6900.95	-308.80	309.10	55.80	40°13'02.041"N	104°46'15.975"W	6.18	
7022.00	40.700	175.570	6935.75	-280.34	280.65	57.73	40°13'01.759"N	104°46'15.950"W	6.30	
7067.00	44.990	175.680	6968.74	-249.82	250.15	60.06	40°13'01.458"N	104°46'15.920"W	9.53	
7112.00	49.980	177.540	6999.14	-216.71	217.05	62.00	40°13'01.131"N	104°46'15.895"W	11.50	
7157.00	54.470	180.040	7026.70	-181.16	181.50	62.73	40°13'00.780"N	104°46'15.885"W	10.90	
7202.00	56.680	179.370	7052.14	-144.04	144.39	62.92	40°13'00.413"N	104°46'15.883"W	5.06	
7247.00	60.200	178.900	7075.69	-105.71	106.05	63.50	40°13'00.034"N	104°46'15.875"W	7.87	
7292.00	66.080	178.760	7096.01	-65.59	65.93	64.32	40°12'59.638"N	104°46'15.865"W	13.07	
7337.00	70.890	178.390	7112.51	-23.74	24.09	65.37	40°12'59.224"N	104°46'15.851"W	10.72	
7382.00	77.280	178.640	7124.84	19.50	-19.14	66.48	40°12'58.797"N	104°46'15.837"W	14.21	
7427.00	81.220	179.160	7133.23	63.70	-63.34	67.33	40°12'58.360"N	104°46'15.826"W	8.83	
7472.00	82.000	179.040	7139.80	108.22	-107.85	68.03	40°12'57.920"N	104°46'15.817"W	1.75	
7511.00	84.480	179.280	7144.39	146.94	-146.57	68.60	40°12'57.538"N	104°46'15.810"W	6.39	
7557.00†	86.516	180.297	7148.00	192.79	-192.43	68.77	40°12'57.084"N	104°46'15.808"W	4.95	7" Casing Point
7623.00	89.440	181.750	7150.33	258.73	-258.37	67.59	40°12'56.433"N	104°46'15.823"W	4.95	
7713.00	88.670	182.620	7151.81	348.63	-348.29	64.16	40°12'55.544"N	104°46'15.867"W	1.29	
7803.00	88.800	181.530	7153.80	438.53	-438.20	60.90	40°12'54.656"N	104°46'15.909"W	1.22	
7893.00	89.170	182.060	7155.39	528.45	-528.15	58.08	40°12'53.767"N	104°46'15.945"W	0.72	
7983.00	89.140	180.400	7156.72	618.41	-618.11	56.15	40°12'52.878"N	104°46'15.970"W	1.84	
8073.00	90.180	180.440	7157.26	708.40	-708.11	55.49	40°12'51.989"N	104°46'15.979"W	1.16	
8163.00	90.400	179.020	7156.80	798.39	-798.10	55.91	40°12'51.099"N	104°46'15.973"W	1.60	
8253.00	90.030	177.710	7156.46	888.37	-888.06	58.48	40°12'50.210"N	104°46'15.940"W	1.51	
8343.00	90.830	178.820	7155.79	978.33	-978.02	61.21	40°12'49.321"N	104°46'15.905"W	1.52	
8433.00	90.550	177.490	7154.70	1068.29	-1067.96	64.10	40°12'48.432"N	104°46'15.868"W	1.51	
8523.00	89.900	178.180	7154.35	1158.24	-1157.90	67.50	40°12'47.544"N	104°46'15.824"W	1.05	

Actual Wellpath Report

ROBERTS 13N-22HZ AWP

Page 4 of 6

REFERENCE WELLPATH IDENTIFICATION				
Operator	KERR-MCGEE OIL & GAS ONSHORE LP		Slot	SLOT#18 ROBERTS 13N-22HZ (511'FNL & 485'FWL, SEC.22)
Area	COLORADO		Well	ROBERTS 13N-22HZ
Field	WELD COUNTY (KERR MCGEE)		Wellbore	ROBERTS 13N-22HZ AWP
Facility	SEC.22-T3N-R66W			

WELLPATH DATA (131 stations)

MD [ft]	Inclination [°]	Azimuth [°]	TVD [ft]	Vert Sect [ft]	North [ft]	East [ft]	Latitude	Longitude	DLS [°/100ft]	Comments
8613.00	89.870	178.930	7154.53	1248.22	-1247.87	69.77	40°12'46.655"N	104°46'15.795"W	0.83	
8703.00	89.560	179.200	7154.98	1338.22	-1337.85	71.24	40°12'45.765"N	104°46'15.776"W	0.46	
8793.00	89.650	178.340	7155.60	1428.20	-1427.83	73.17	40°12'44.876"N	104°46'15.751"W	0.96	
8883.00	88.890	178.920	7156.75	1518.18	-1517.79	75.33	40°12'43.987"N	104°46'15.723"W	1.06	
8973.00	88.880	178.910	7158.50	1608.15	-1607.76	77.03	40°12'43.098"N	104°46'15.701"W	0.02	
9063.00	90.060	179.380	7159.33	1698.14	-1697.75	78.37	40°12'42.209"N	104°46'15.684"W	1.41	
9153.00	89.340	179.810	7159.80	1788.14	-1787.74	79.01	40°12'41.320"N	104°46'15.676"W	0.93	
9243.00	90.270	179.820	7160.11	1878.14	-1877.74	79.30	40°12'40.430"N	104°46'15.672"W	1.03	
9333.00	91.180	180.070	7158.97	1968.13	-1967.73	79.39	40°12'39.541"N	104°46'15.671"W	1.05	
9423.00	91.040	179.780	7157.22	2058.11	-2057.71	79.50	40°12'38.652"N	104°46'15.669"W	0.36	
9513.00	91.540	179.510	7155.20	2148.09	-2147.69	80.06	40°12'37.763"N	104°46'15.662"W	0.63	
9603.00	91.490	180.060	7152.82	2238.06	-2237.66	80.40	40°12'36.874"N	104°46'15.658"W	0.61	
9693.00	90.060	181.410	7151.60	2328.03	-2327.64	79.24	40°12'35.984"N	104°46'15.673"W	2.18	
9783.00	90.000	180.520	7151.55	2418.01	-2417.62	77.73	40°12'35.095"N	104°46'15.692"W	0.99	
9873.00	90.060	181.020	7151.51	2507.99	-2507.61	76.52	40°12'34.206"N	104°46'15.708"W	0.56	
9963.00	90.150	181.070	7151.34	2597.97	-2597.60	74.88	40°12'33.317"N	104°46'15.729"W	0.11	
10053.00	89.690	180.870	7151.47	2687.94	-2687.59	73.35	40°12'32.427"N	104°46'15.749"W	0.56	
10143.00	89.540	181.390	7152.07	2777.91	-2777.57	71.58	40°12'31.538"N	104°46'15.771"W	0.60	
10233.00	89.660	181.860	7152.70	2867.86	-2867.53	69.03	40°12'30.649"N	104°46'15.804"W	0.54	
10323.00	89.540	180.840	7153.33	2957.82	-2957.50	66.91	40°12'29.760"N	104°46'15.832"W	1.14	
10413.00	89.570	178.460	7154.03	3047.81	-3047.49	67.46	40°12'28.871"N	104°46'15.825"W	2.64	
10503.00	89.140	179.860	7155.04	3137.80	-3137.47	68.78	40°12'27.982"N	104°46'15.808"W	1.63	
10593.00	87.970	179.670	7157.31	3227.77	-3227.44	69.14	40°12'27.093"N	104°46'15.803"W	1.32	
10683.00	87.990	179.880	7160.48	3317.71	-3317.38	69.50	40°12'26.204"N	104°46'15.798"W	0.23	
10773.00	87.720	179.770	7163.85	3407.65	-3407.32	69.77	40°12'25.315"N	104°46'15.795"W	0.32	
10864.00	88.370	179.780	7166.96	3498.59	-3498.27	70.13	40°12'24.416"N	104°46'15.790"W	0.71	
10954.00	89.160	178.890	7168.90	3588.57	-3588.24	71.17	40°12'23.527"N	104°46'15.777"W	1.32	
11044.00	90.460	178.590	7169.19	3678.55	-3678.21	73.15	40°12'22.638"N	104°46'15.751"W	1.48	
11134.00	91.290	178.420	7167.82	3768.52	-3768.17	75.50	40°12'21.749"N	104°46'15.721"W	0.94	
11224.00	90.920	178.170	7166.08	3858.48	-3858.11	78.18	40°12'20.860"N	104°46'15.686"W	0.50	
11314.00	90.800	177.750	7164.73	3948.43	-3948.05	81.38	40°12'19.972"N	104°46'15.645"W	0.49	
11404.00	90.770	178.490	7163.50	4038.38	-4037.99	84.33	40°12'19.083"N	104°46'15.607"W	0.82	
11494.00	91.260	179.410	7161.91	4128.36	-4127.96	85.98	40°12'18.194"N	104°46'15.586"W	1.16	
11584.00	90.980	179.230	7160.15	4218.34	-4217.93	87.05	40°12'17.305"N	104°46'15.572"W	0.37	
11674.00	90.610	179.100	7158.90	4308.33	-4307.92	88.36	40°12'16.415"N	104°46'15.555"W	0.44	
11764.00	90.240	179.040	7158.23	4398.32	-4397.90	89.82	40°12'15.526"N	104°46'15.536"W	0.42	
11854.00	90.240	179.030	7157.85	4488.32	-4487.89	91.34	40°12'14.637"N	104°46'15.517"W	0.01	
11944.00	89.660	178.500	7157.93	4578.30	-4577.87	93.28	40°12'13.748"N	104°46'15.492"W	0.87	
12034.00	89.850	178.640	7158.32	4668.29	-4667.84	95.52	40°12'12.859"N	104°46'15.463"W	0.26	
12071.00	89.690	179.570	7158.47	4705.28	-4704.83	96.10	40°12'12.493"N	104°46'15.455"W	2.55	Last BHI MWD+IFR Surveys
12125.00	89.690	179.570	7158.76	4759.28	-4758.83	96.51	40°12'11.959"N	104°46'15.450"W	0.00	Projection to Bit

Actual Wellpath Report

ROBERTS 13N-22HZ AWP

Page 5 of 6

REFERENCE WELLPATH IDENTIFICATION			
Operator	KERR-MCGEE OIL & GAS ONSHORE LP	Slot	SLOT#18 ROBERTS 13N-22HZ (511'FNL & 485'FWL, SEC.22)
Area	COLORADO	Well	ROBERTS 13N-22HZ
Field	WELD COUNTY (KERR MCGEE)	Wellbore	ROBERTS 13N-22HZ AWB
Facility	SEC.22-T3N-R66W		

HOLE & CASING SECTIONS - Ref Wellbore: ROBERTS 13N-22HZ AWB Ref Wellpath: ROBERTS 13N-22HZ AWP									
String/Diameter	Start MD [ft]	End MD [ft]	Interval [ft]	Start TVD [ft]	End TVD [ft]	Start N/S [ft]	Start E/W [ft]	End N/S [ft]	End E/W [ft]
13.5in Open Hole	13.00	1240.00	1227.00	13.00	1239.97	0.00	0.00	3.85	3.44
9.625in Casing Surface	13.00	1225.00	1212.00	13.00	1224.97	0.00	0.00	3.87	3.49
8.75in Open Hole	1240.00	7570.00	6330.00	1239.97	7148.73	3.85	3.44	-205.41	68.67
7in Casing Intermediate	13.00	7557.00	7544.00	13.00	7148.00	0.00	0.00	-192.43	68.77
6.125in Open Hole	7570.00	12125.00	4555.00	7148.73	7158.76	-205.41	68.67	-4758.83	96.51

TARGETS									
Name	MD [ft]	TVD [ft]	North [ft]	East [ft]	Grid East [US ft]	Grid North [US ft]	Latitude	Longitude	Shape
ROBERTS 13N-22HZ LAND BOX		0.00	0.00	0.00	3203496.79	1322507.38	40°12'58.986"N	104°46'16.694"W	polygon
SEC.22-T3N-R66W SECTION LINES		0.00	0.00	0.00	3203496.79	1322507.38	40°12'58.986"N	104°46'16.694"W	polygon
ROBERTS 13N-22HZ BHL (1'FSL & 554'FWL, SEC.22) REV-2		7153.00	-4758.12	91.01	3203626.89	1317750.38	40°12'11.966"N	104°46'15.521"W	point
ROBERTS 13N-22HZ BHL ON PLAT (1'FSL & 580'FWL, SEC.22) REV-1		7153.00	-4758.12	117.01	3203652.89	1317750.59	40°12'11.966"N	104°46'15.186"W	point

WELLPATH COMPOSITION - Ref Wellbore: ROBERTS 13N-22HZ AWB Ref Wellpath: ROBERTS 13N-22HZ AWP				
Start MD [ft]	End MD [ft]	Positional Uncertainty Model	Log Name/Comment	Wellbore
13.00	1124.00	Generic gyro - continuous (Standard)	MS ENERGY SERVICES <113-1124>	ROBERTS 13N-22HZ AWB
1124.00	7511.00	NaviTrak (MAGCORR,IFR)	BHI MWD+IFR SURVEYS 8 3/4" HOLE <1253-7511>	ROBERTS 13N-22HZ AWB
7511.00	12071.00	NaviTrak (MAGCORR,IFR)	BHI MWD+IFR SURVEYS 6 1/8" HOLE <7623-12071>	ROBERTS 13N-22HZ AWB
12071.00	12125.00	Blind Drilling (std)	Projection to bit	ROBERTS 13N-22HZ AWB

Actual Wellpath Report

ROBERTS 13N-22HZ AWP

Page 6 of 6

REFERENCE WELLPATH IDENTIFICATION			
Operator	KERR-MCGEE OIL & GAS ONSHORE LP	Slot	SLOT#18 ROBERTS 13N-22HZ (511'FNL & 485'FWL, SEC.22)
Area	COLORADO	Well	ROBERTS 13N-22HZ
Field	WELD COUNTY (KERR MCGEE)	Wellbore	ROBERTS 13N-22HZ AWB
Facility	SEC.22-T3N-R66W		

WELLPATH COMMENTS					
MD [ft]	Inclination [°]	Azimuth [°]	TVD [ft]	Comment	
13.00	0.000	15.830	13.00	Tie-On	
113.00	0.700	15.830	113.00	Begin GYRO Surveys	
1124.00	0.300	268.670	1123.97	Tie-Into GYRO Surveys	
1253.00	0.160	240.980	1252.97	Begin BHI MWD+IFR Surveys	
7557.00	86.516	180.297	7148.00	7" Casing Point	
12071.00	89.690	179.570	7158.47	Last BHI MWD+IFR Surveys	
12125.00	89.690	179.570	7158.76	Projection to Bit	