

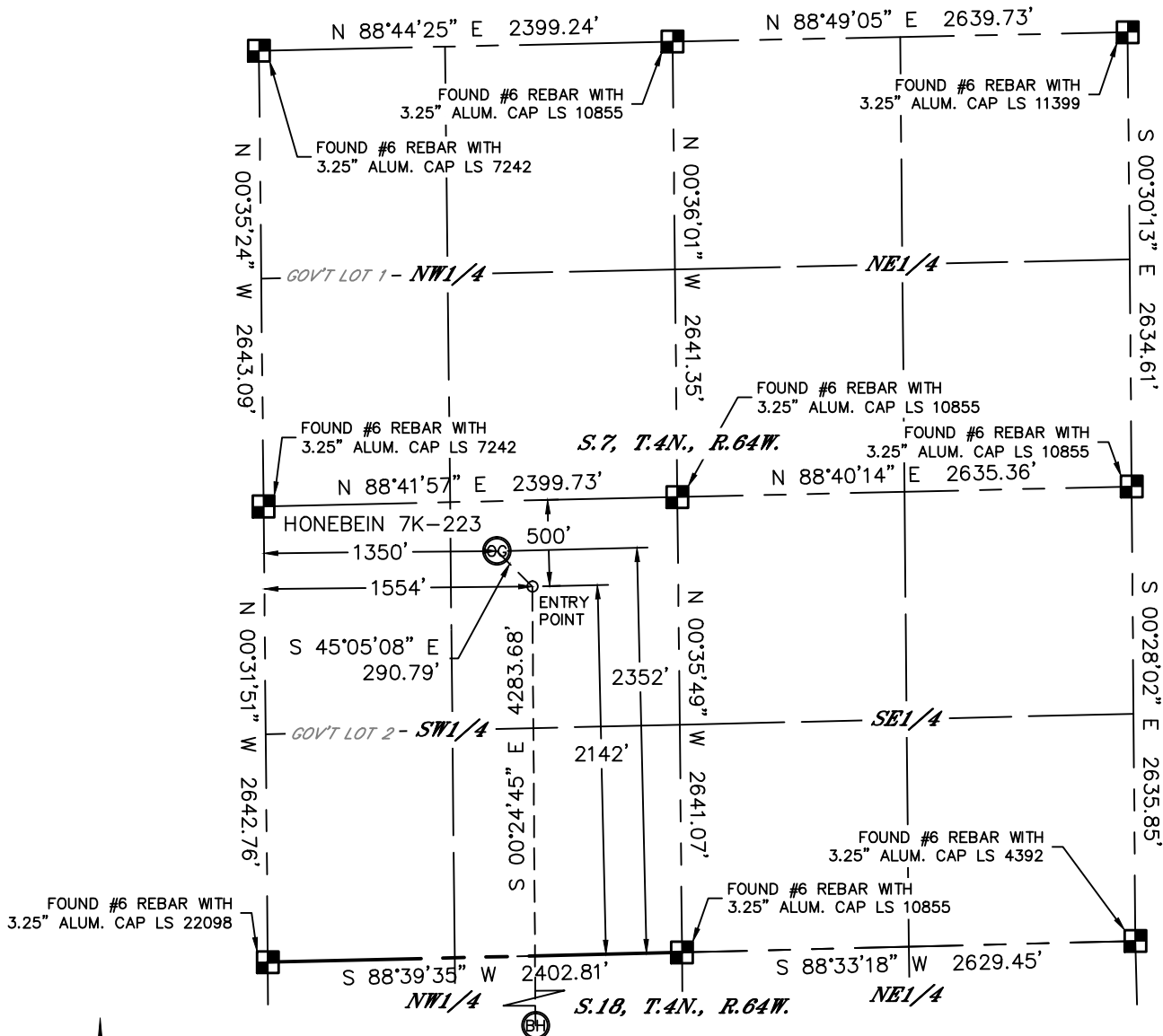


Lat40°, Inc. 1635 Foxtrail Drive, Suite 325 Loveland, CO 970-776-3321

WELL LOCATION CERTIFICATE

THIS MAP DOES NOT REPRESENT A BOUNDARY SURVEY

SECTION: 7
TOWNSHIP: 4N
RANGE: 64W



In accordance with a request from Mac Neumann with PDC ENERGY

Lat40°, Inc. has determined the surface location of the HONEBEIN 7K-223 to be 2352' from the SOUTH line and 1350' from the WEST line as measured at right angles from the section lines of Section 7, Township 4 North, Range 64 West and the bottom hole to be 2141' from the NORTH line and 1554' from the WEST line as measured at right angles from the section lines of Section 18, Township 4 North, Range 64 West of the Sixth Principal Meridian, County of Weld, State of Colorado.

I hereby state that this Well Location Certificate was prepared by me, or under my direct supervision, that the fieldwork was completed on 7/3/2014, for and on behalf of PDC ENERGY. That this is not a Land Survey Plat or an Improvement Survey Plat, and that it is not to be relied upon for establishment of fence, building, or other future improvement lines.

SURFACE LOCATION

LAT: 40.32593°N
LONG: 104.59720°W
PDOP: 1.3
ELEV: 4850'
1/4,1/4: NESW

BOTTOM HOLE

LAT: 40.31361°N
LONG: 104.59652°W

ENTRY POINT

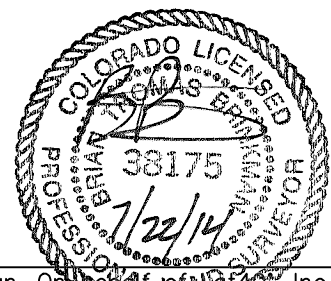
LAT: 40.32536°N
LONG: 104.59647°W

LEGEND

- = ALIQUOT MONUMENT AS DESCRIBED
○ = CALCULATED POSITION

SHEET 1 OF 2

Brian T. Brinkman—On behalf of Lat40°, Inc.
Colorado Licensed Professional Land Surveyor No. 38175
DATE: 7/22/2014
PROJECT#: 2014120



NOTE:

- 1) Bearings shown are Grid Bearings of the Colorado State Plane Coordinate System, North Zone, North American Datum 1983. The lineal dimensions as contained herein are based upon the "U.S. Survey Foot."
- 2) Ground elevations are based on an observed GPS elevation (NAVD 1988 DATUM).
- 3) IMPROVEMENTS: See LOCATION DRAWING for all visible improvements within 500' of disturbed area.
- 4) SURFACE USE: PASTURE
- 5) INSTRUMENT OPERATOR: BRIAN ROTTINGHAUS
- 6) NEAREST CULTURAL ITEMS:
BUILDING: ±759' SE
BUILDING UNIT: ±759' SE
HIGH OCCUPANCY BUILDING UNIT: 5280'+
DESIGNATED OUTSIDE ACTIVITY AREA: 5280'+
PUBLIC ROAD: (CR 49) 1330' W
ABOVEGROUND UTILITY: ±907' N
RAILROAD: 5280'+
PROPERTY LINE: 290' N

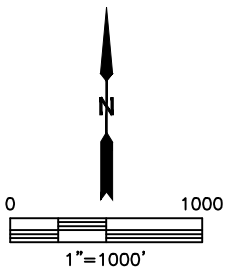
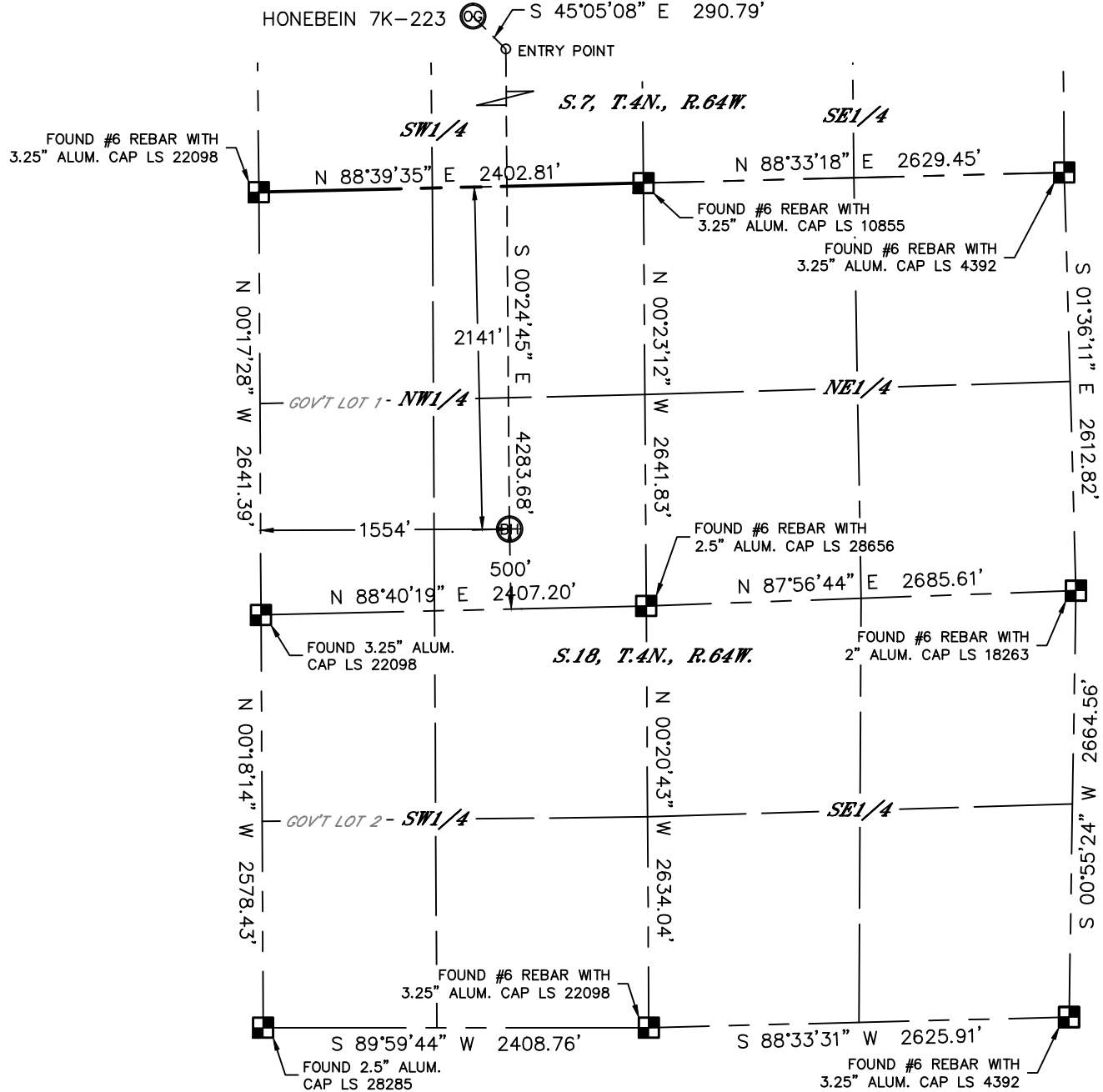


Lat40°, Inc. 1635 Foxtrail Drive, Suite 325 Loveland, CO 970-776-3321

WELL LOCATION CERTIFICATE

SECTION: 7
TOWNSHIP: 4N
RANGE: 64W

THIS MAP DOES NOT REPRESENT A BOUNDARY SURVEY
HONEBEIN 7K-223

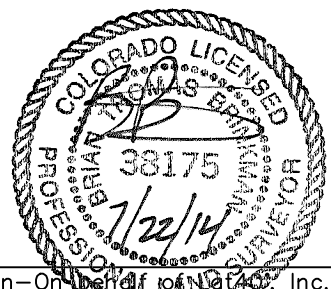


LEGEND

- = ALIQUOT MONUMENT AS DESCRIBED
- = CALCULATED POSITION

SHEET 2 OF 2

Brian T. Brinkman—On behalf of Lat40°, Inc.
Colorado Licensed Professional Land Surveyor No. 38175
DATE: 7/22/2014
PROJECT#: 2014120



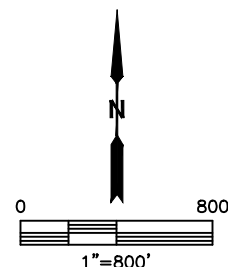
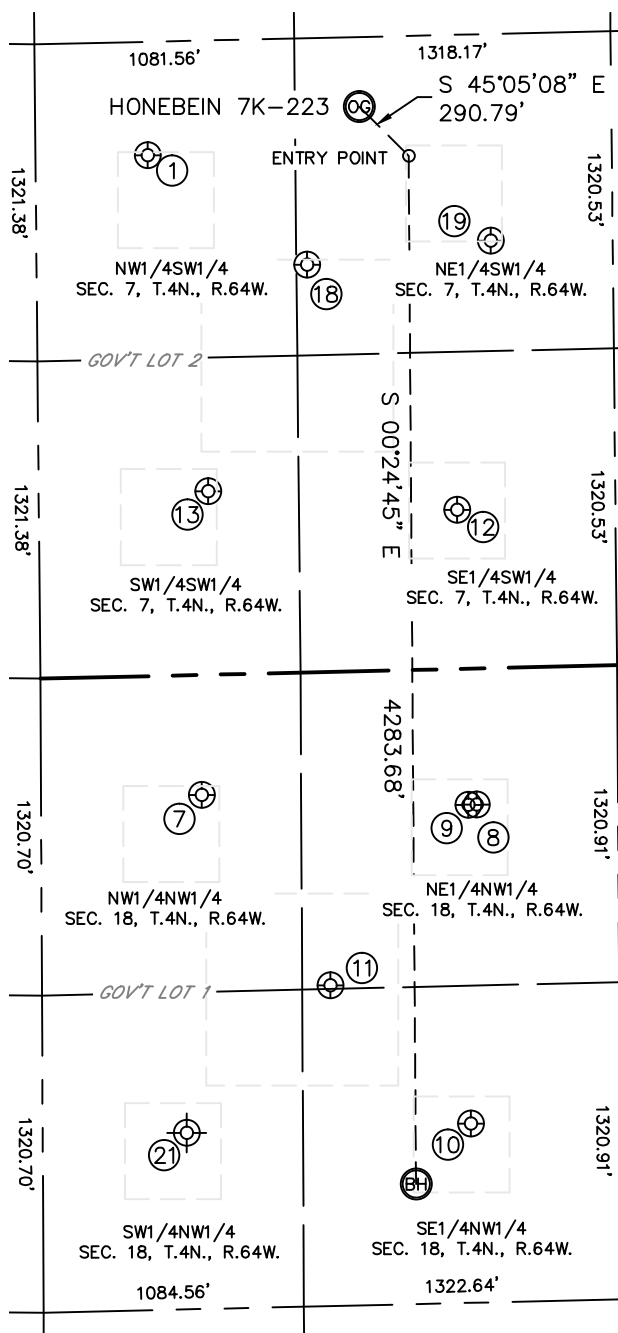


Lat40°, Inc. 1635 Foxtrail Drive, Suite 325 Loveland, CO 970-776-3321

SITE SKETCH

HONEBEIN 7K-223

SECTION: 7
TOWNSHIP: 4N
RANGE: 64W



| WELL NO. | WELL NAME | SHL FOOTAGE | | | | SHL LAT° | SHL LONG° | PDOP | ELEV (FT.) | 1/4/1/4 |
|----------|----------------|-------------|-----|------|-----|----------|------------|------|------------|---------|
| 1 | HONEBEIN 13-7U | 2170 | FSL | 467 | FWL | 40.32540 | -104.60037 | 1.9 | 4839 | NWSW |
| 7 | FRY PM C 18-4 | 500 | FNL | 670 | FWL | 40.31808 | -104.59965 | 1.7 | 4813 | NWNW |
| 8 | FRY 21-6I | 567 | FNL | 1814 | FWL | 40.31794 | -104.59555 | 1.7 | 4839 | NENW |
| 9 | FRY 21-18 | 567 | FNL | 1780 | FWL | 40.31794 | -104.59568 | 1.7 | 4838 | NENW |
| 10 | FRY 22-18 | 1895 | FNL | 1784 | FWL | 40.31429 | -104.59569 | 1.6 | 4830 | SENW |
| 11 | FRY 5 | 1306 | FNL | 1202 | FWL | 40.31589 | -104.59776 | 1.6 | 4818 | NENW |
| 12 | LATHAM 7-4 | 662 | FSL | 1742 | FWL | 40.32131 | -104.59580 | 1.6 | 4851 | SESW |
| 13 | LATHAM 7-3 | 764 | FSL | 706 | FWL | 40.32155 | -104.59952 | 1.6 | 4835 | SWSW |
| 18 | LATHAM 7-1 | 1698 | FSL | 1126 | FWL | 40.32413 | -104.59801 | 2.4 | 4848 | NESW |
| 19 | LATHAM 7-2 | 1779 | FSL | 1892 | FWL | 40.32438 | -104.59526 | 2.2 | 4860 | NESW |
| 21 | FRY 18-1 | 1906 | FNL | 600 | FWL | 40.31434 | -104.59988 | NA | 4795 | SWNW |

NOTE: THE ABANDONED WELL DATA SHOWN IN RED ABOVE WAS OBTAINED FROM COGCC SCOUT CARDS.

DATE: 7/22/2014
PROJECT#: 2014120