



410 17th Street, Suite 1500
Denver, CO 80202
(720) 440-6100 phone
(720) 305-0804 fax

Bonanzacrk.com

14 July 2014

Colorado Oil and Gas Conservation
Commission
The Chancery Building
1120 Lincoln Street, Suite 801
Denver, CO 80203

Attn: Mr. Matt Lepore, Director

Re: Notice of 318A.a.(4)D. Horizontal Wellbore Spacing Unit Proposal
North Platte Federal A-E-22HC
SHL: NWNW (617' FNL, 1205' FWL) Sec 22-T5N-R63W, 6th PM
Top of Production: NWNW (631' FNL, 10' FWL) Sec 22-5N-63W, 6TH PM
Bottom of Production: SWSW (470' FSL, 10' FWL) Sec 22-5N-63W, 6TH PM
Weld County, Colorado

Mr. Lepore:

Bonanza Creek Energy, Inc. (Bonanza) intends to permit, drill and operate the referenced Codell Fm. Horizontal Well. As defined by Colorado Oil and Gas Conservation Commission (COGCC) Rule 318A.a.(4)D., Bonanza proposes the following wellbore spacing unit:

W/2W/2 Sec 22-T5N-R63W and E/2E/2 Sec 21-T5N-R63W, Weld County, CO. – 320 Acres.

Bonanza has notified the other owners in the unit and no objections were received. Copies of the notifications are maintained in Bonanza's files.

Bonanza respectfully requests that you review the enclosed wellbore spacing unit documentation and approve the referenced APD.

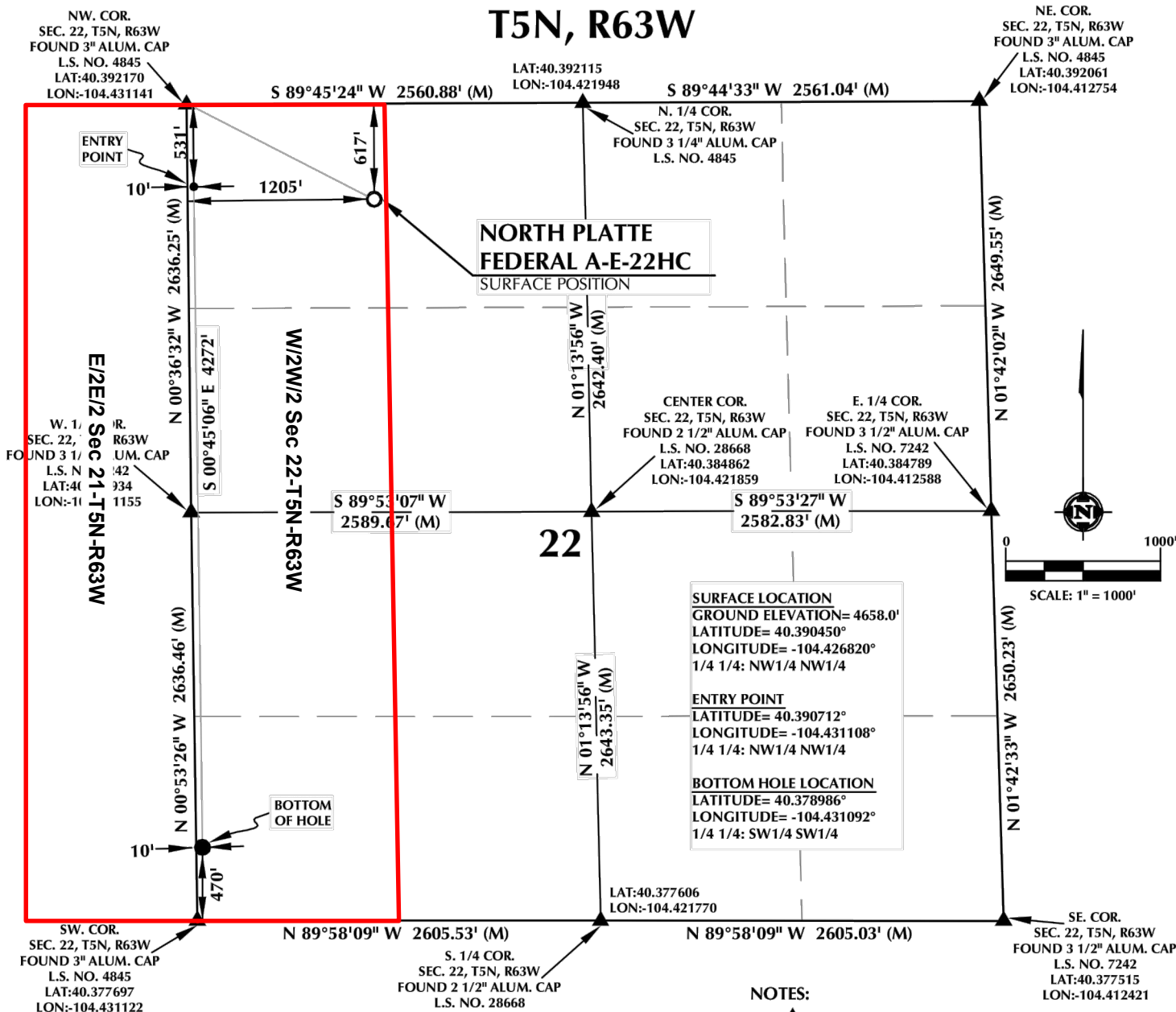
Please do not hesitate to call or email me, directly, at (720) 440-6112 or kcaplan@bonanzacrk.com, should you have any questions pertaining to this matter.

Thank you for your cooperation.

Sincerely,
BONANZA CREEK ENERGY, INC.
BONANZA CREEK ENERGY OPERATING COMPANY, LLC

Keith S. Caplan
Sr. Regulatory Specialist

T5N, R63W



CERTIFICATE OF SURVEYOR:

THIS IS TO CERTIFY THAT THE ABOVE PLAT WAS PREPARED FROM FIELD NOTES OF ACTUAL SURVEY MADE BY ME OR UNDER MY SUPERVISION AND THAT THE SAME ARE TRUE AND CORRECT TO THE BEST OF MY KNOWLEDGE AND BELIEF.

NEAREST CULTURAL ITEMS:

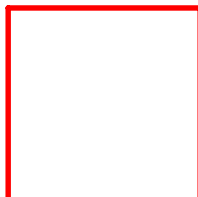
BUILDING: ±3810' SW
BUILDING UNIT: ±3810' SW
HIGH OCCUPANCY BUILDING UNIT: 5280'+
DESIGNATED OUTSIDE ACTIVITY AREA: 5280'+

NOTES:

- ▲ INDICATES FOUND SECTION CORNER
- INDICATES CALCULATED CORNER
- DRAWING LATITUDE AND LONGITUDE COORDINATES ARE NAD 83 (CORS 96)(EPOCH:2002)
- ELEVATION BASED ON NAVD88 (GEOID09)
- BASIS OF BEARING DERIVED FROM COLORADO COORDINATE



**BONANZA
CREEK**



Wellbore Spacing Unit Outline



Wellbore Spacing Unit Map

02 January 2014 ksc

North Platte Federal A-E-22HC
W/2W/2 Sec 22-T5N-R63W 6th PM
E/2E/2 Sec 21-T5N-R63W 6th PM
Weld County, Colorado