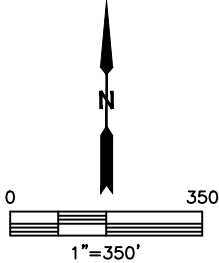
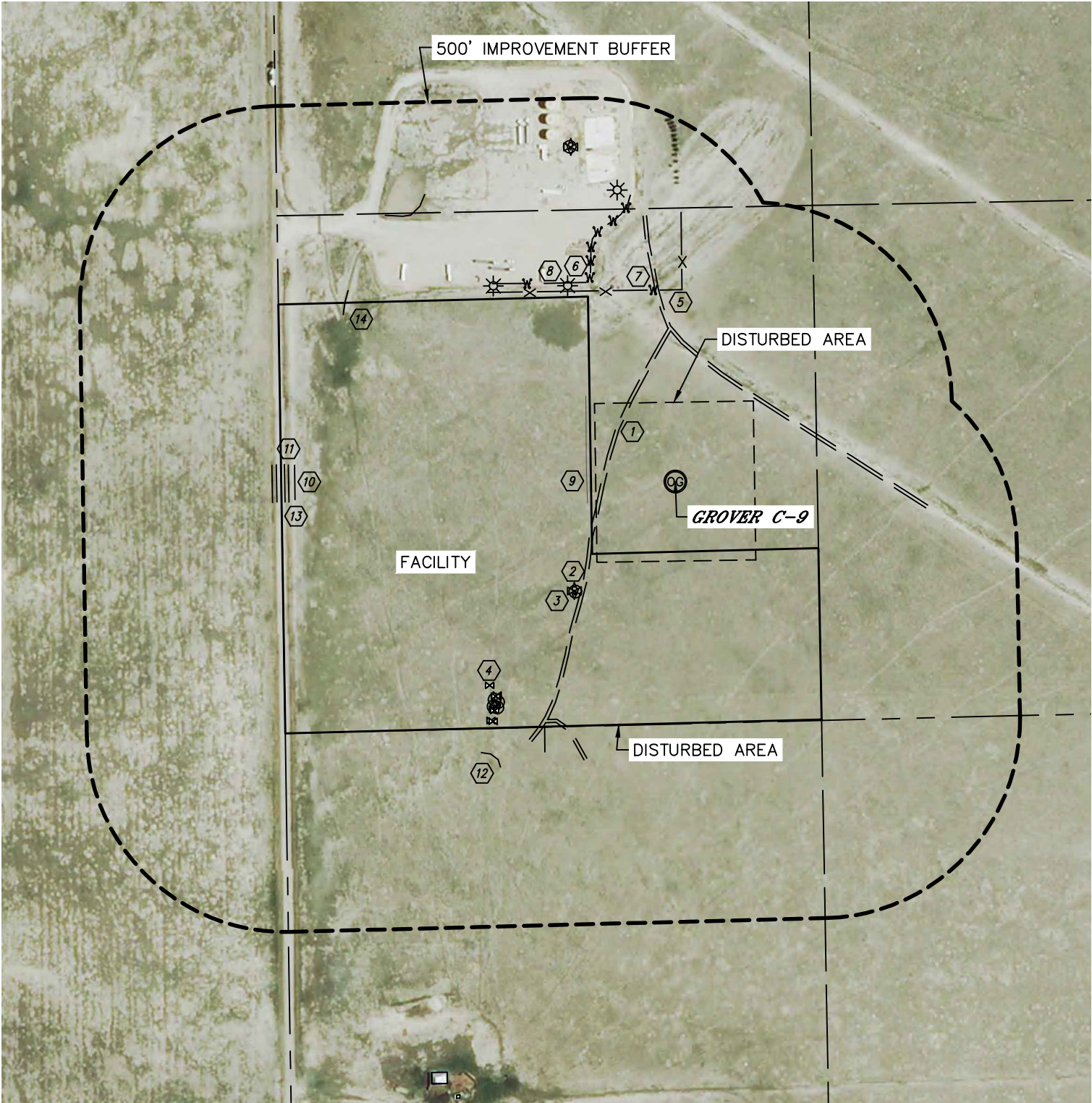




Lat40°, Inc. 1635 Foxtrail Drive, Suite 325 Loveland, CO 970-776-3321

LOCATION DRAWING  
GROVER C-9

SECTION: 13  
TOWNSHIP: 10N  
RANGE: 61W





Lat40°, Inc. 1635 Foxtrail Drive, Suite 325 Loveland, CO 970-776-3321

## LOCATION DRAWING

GROVER C-9

SECTION: 13  
TOWNSHIP: 10N  
RANGE: 61W

### IMPROVEMENTS:

(MEASURED FROM THE PROPOSED GROVER C-9 WELL LOCATION)

- BU1 NO BUILDING UNITS WITHIN 500' IMPROVEMENT BUFFER
- B1 NO BUILDINGS WITHIN 500' IMPROVEMENT BUFFER
- 1 FIELD ROAD 172' NW, 286' NE, 668' SW
- 2 WATER MANHOLE 374', 712', 713', 724' & 728' SW, 884' NW
- 3 AIR VALVE 375' SW, 883' NW
- 4 WATER VALVES 694' SW (NEAREST)
- 5 FENCE 483' N, 700' SW
- 6 EDGE OF GRAVEL, EXISTING FACILITY 546' NW
- 7 WOOD POSTS 485' NW (NEAREST)
- 8 LIGHT POLES 563' NW (NEAREST)
- 9 EDGE OF RECLAIMED AREA 222' W
- 10 OVERHEAD UTILITY 958' W
- 11 COUNTY ROAD 95 983' W
- 12 POND 830' SW, 992' NW
- 13 BARROW DITCH 973' & 1015' W
- 14 DITCH 936' NW

### NEAREST CULTURAL ITEM:

BUILDING ±556' S, BUILDING UNIT ±1448' NW (DILAPIDATED), HIGH OCCUPANCY BUILDING UNIT 5280'+,  
DESIGNATED OUTSIDE ACTIVITY AREA 5280'+, PUBLIC ROAD ±0' W (CR 95),  
ABOVE GROUND UTILITY ±34' E, RAILROAD 5280'+, PROPERTY LINE ±0' E, S & W

(DISTANCES MEASURED FROM THE CENTER OF THE PROPOSED WELL HEAD OR LIMITS OF THE  
PROPOSED PRODUCTION FACILITY, MLVT CLOSEST TO THE REFERENCED CULTURAL ITEM)

***SHEET 2 OF 2***

DATE: 8/12/2014  
PROJECT#: 2014109