

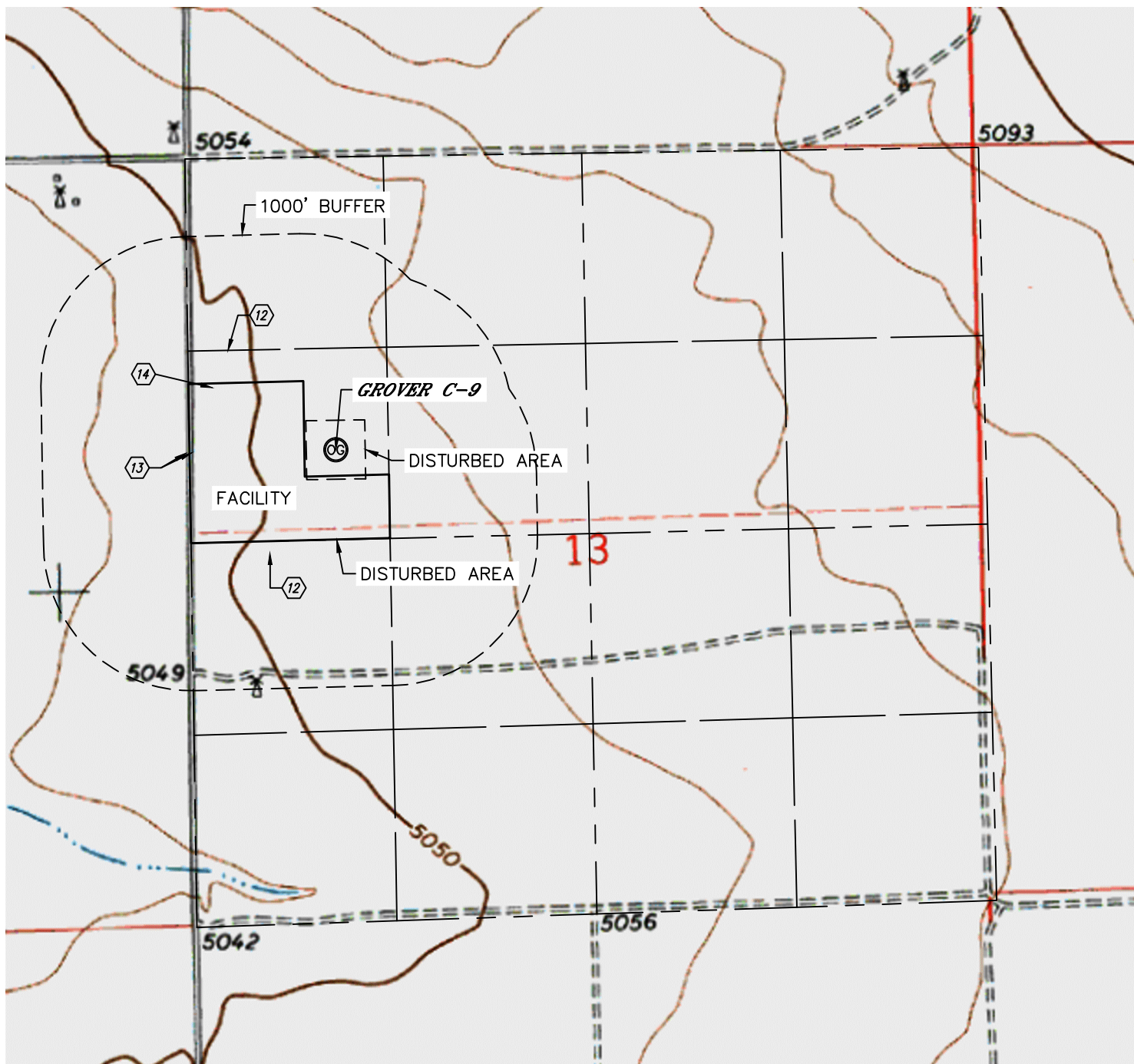


Lat40°, Inc. 1635 Foxtrail Drive, Suite 325 Loveland, CO 970-776-3321

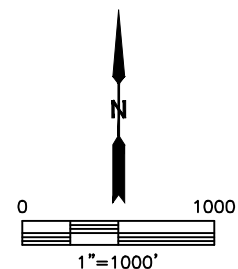
# HYDROLOGY MAP

GROVER C-9

SECTION: 13  
TOWNSHIP: 10N  
RANGE: 61W



- 12 POND 830' SW, 992' NW
- 13 BARROW DITCH 973' & 1015' W
- 14 DITCH 936' NW



DATE: 8/12/2014  
PROJECT#: 2014109