

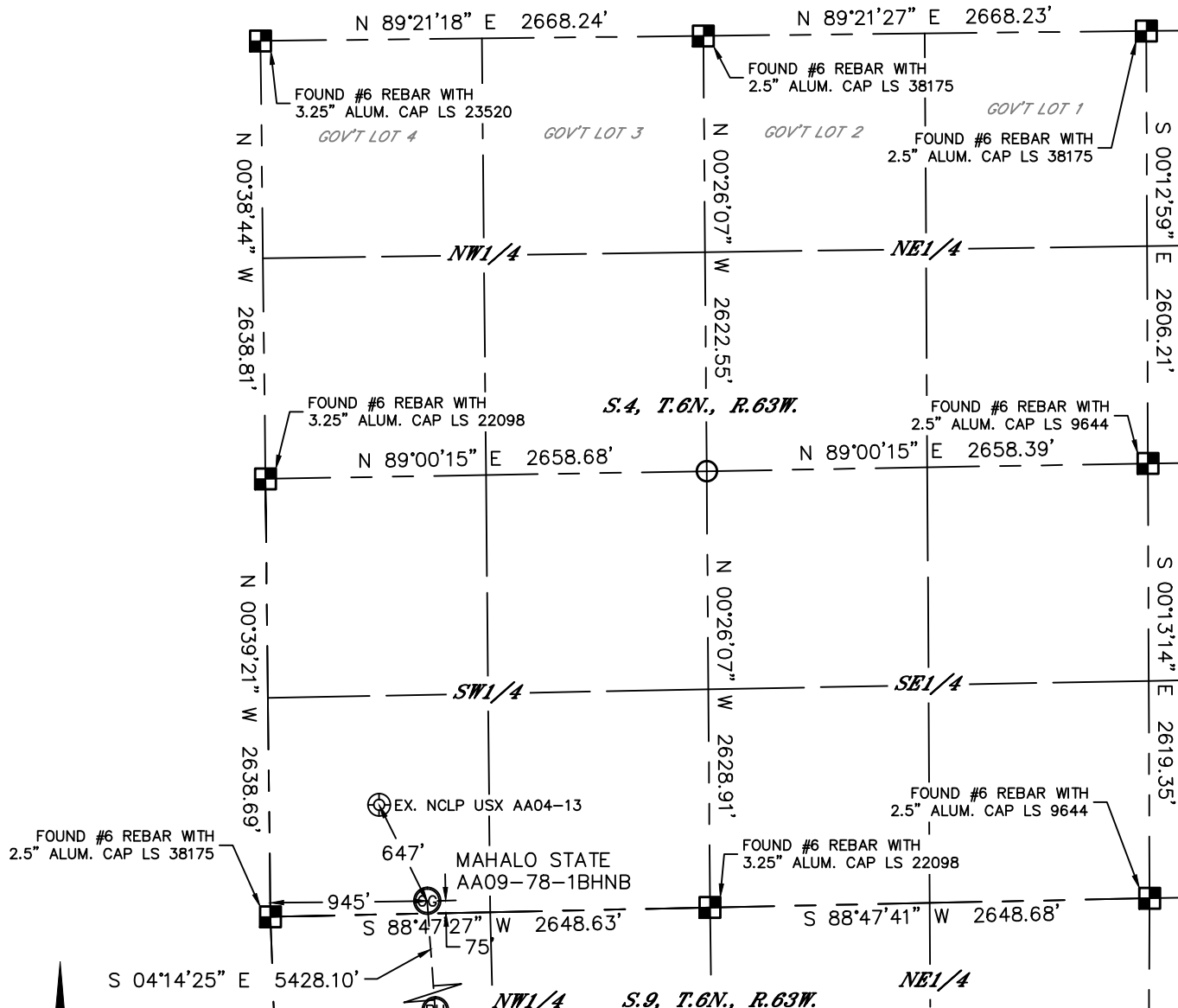


Lat40°, Inc. 1635 Foxtrail Drive, Suite 325 Loveland, CO 970-776-3321

WELL LOCATION CERTIFICATE

THIS MAP DOES NOT REPRESENT A BOUNDARY SURVEY

SECTION: 4
TOWNSHIP: 6N
RANGE: 63W



In accordance with a request from Greg Wilson with Noble Energy Inc. Lat40°, Inc. has determined the surface location of the MAHALO STATE AA09-78-1BHN to be 75' from the SOUTH line and 945' from the WEST line as measured at right angles from the section lines of Section 4, Township 6 North, Range 63 West and the bottom hole to be 30' from the NORTH line and 1155' from the WEST line as measured at right angles from the section lines of Section 16, Township 6 North, Range 63 West of the Sixth Principal Meridian, County of Weld, State of Colorado.

I hereby state that this Well Location Certificate was prepared by me, or under my direct supervision, that the fieldwork was completed on 7/11/2013, for and on behalf of Noble Energy Inc. That this is not a Land Survey Plat or an Improvement Survey Plat, and that it is not to be relied upon for establishment of fence, building, or other future improvement lines.

NOTE:

- 1) Bearings shown are Grid Bearings of the Colorado State Plane Coordinate System, North Zone, North American Datum 1983/2007. The lineal dimensions as contained herein are based upon the "U.S. Survey Foot."
- 2) Ground elevations are based on an observed GPS elevation (NAVD 1988 DATUM).
- 3) IMPROVEMENTS: See LOCATION DRAWING for all visible improvements within 500' of disturbed area.
- 4) SURFACE USE: CROPLAND
- 5) INSTRUMENT OPERATOR: ADAM KELLY
- 6) NEAREST EXISTING WELL: NCLP USX AA04-13, 647'
- NEAREST CULTURAL ITEMS:
BUILDING: ±4901' SE
BUILDING UNIT: ±4901' SE
HIGH OCCUPANCY BUILDING UNIT: 5280'+
DESIGNATED OUTSIDE ACTIVITY AREA: 5280'+
PUBLIC ROAD: (HIGHWAY 392) 2808' SE
ABOVEGROUND UTILITY: 2749' SE
RAILROAD: 5280'+
PROPERTY LINE: 1703' E

SURFACE LOCATION

LAT: 40.50875N
LONG: 104.44783W
PDOP: 1.7
ELEV: 4698'
1/4,1/4: SW1/4SW1/4

BOTTOM HOLE

LAT: 40.49388N
LONG: 104.44661W

LEGEND

- = ALIQUOT MONUMENT AS DESCRIBED
○ = CALCULATED POSITION

SHEET 1 OF 3

Brian T. Brinkman—Lat40°, Inc.
Colorado Licensed Professional Land Surveyor
DATE: 8/21/2014
PROJECT#: 2013042



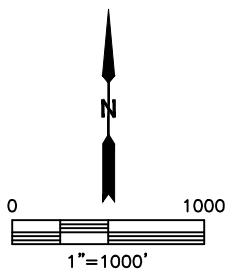
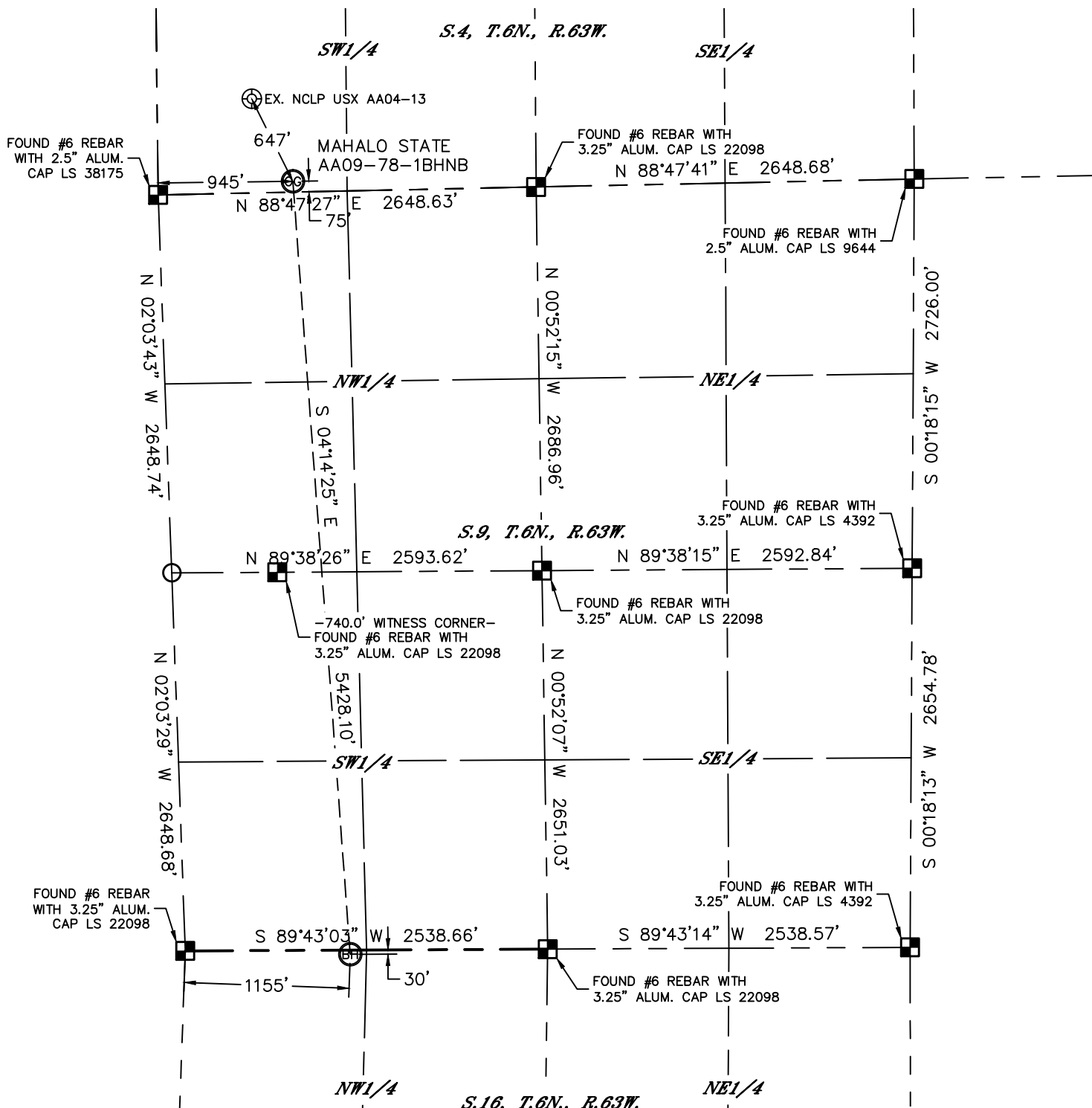


Lat40°, Inc. 1635 Foxtrail Drive, Suite 325 Loveland, CO 970-776-3321

WELL LOCATION CERTIFICATE

THIS MAP DOES NOT REPRESENT A BOUNDARY SURVEY

SECTION: 4
TOWNSHIP: 6N
RANGE: 63W

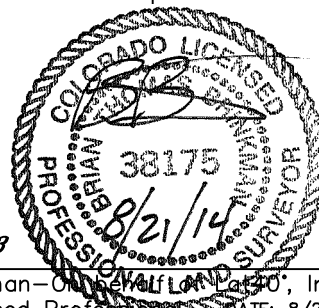


LEGEND

- = ALIQUOT MONUMENT AS DESCRIBED
- = CALCULATED POSITION

SHEET 2 OF 3

Brian T. Brinkman—On Behalf of Lat40°, Inc.
Colorado Licensed Professional Land Surveyor No. 38175
DATE: 8/21/2014
PROJECT#: 2013042



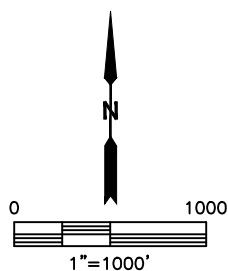
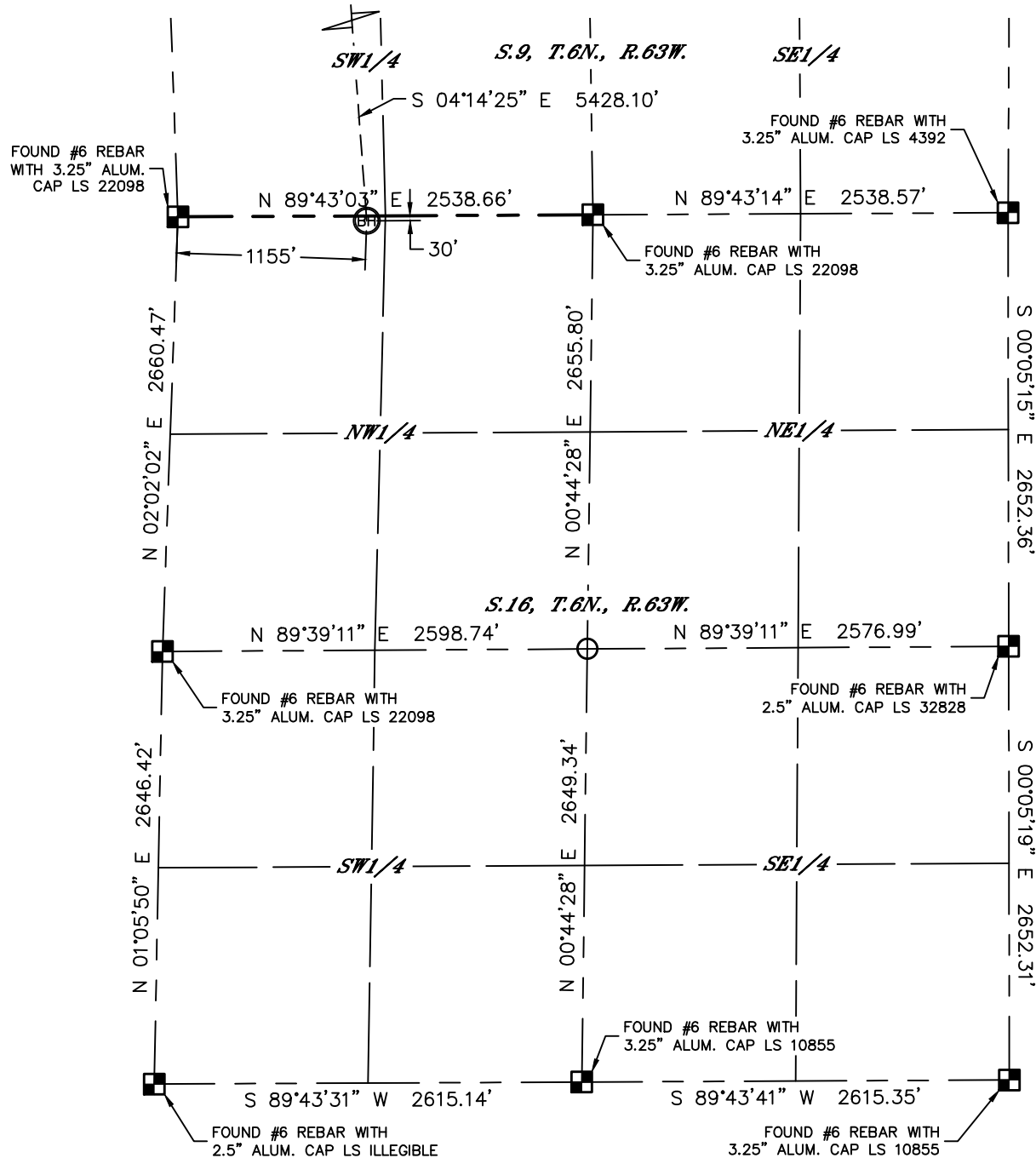
Lat40°, Inc. 1635 Foxtrail Drive, Suite 325 Loveland, CO 970-776-3321

WELL LOCATION CERTIFICATE


THIS MAP DOES NOT REPRESENT A BOUNDARY SURVEY

SECTION: 4
TOWNSHIP: 6N
RANGE: 63W

MAHALO STATE AA09-78-1BHN



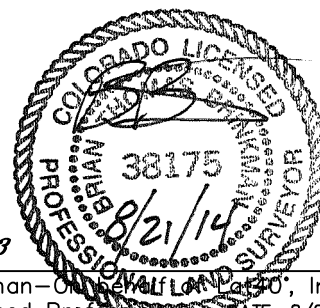
LEGEND

- = ALIQUOT MONUMENT AS DESCRIBED
 = CALCULATED POSITION

SHEET 3 OF 3

Brian T. Brinkman—Owner, L&L Land Co., Inc.
Colorado Licensed Professional Surveyor No. 38175
DATE: 8/21/2010
PROJECT#: 2010-0001

DATE: 8/21/2014
PROJECT#: 2013042



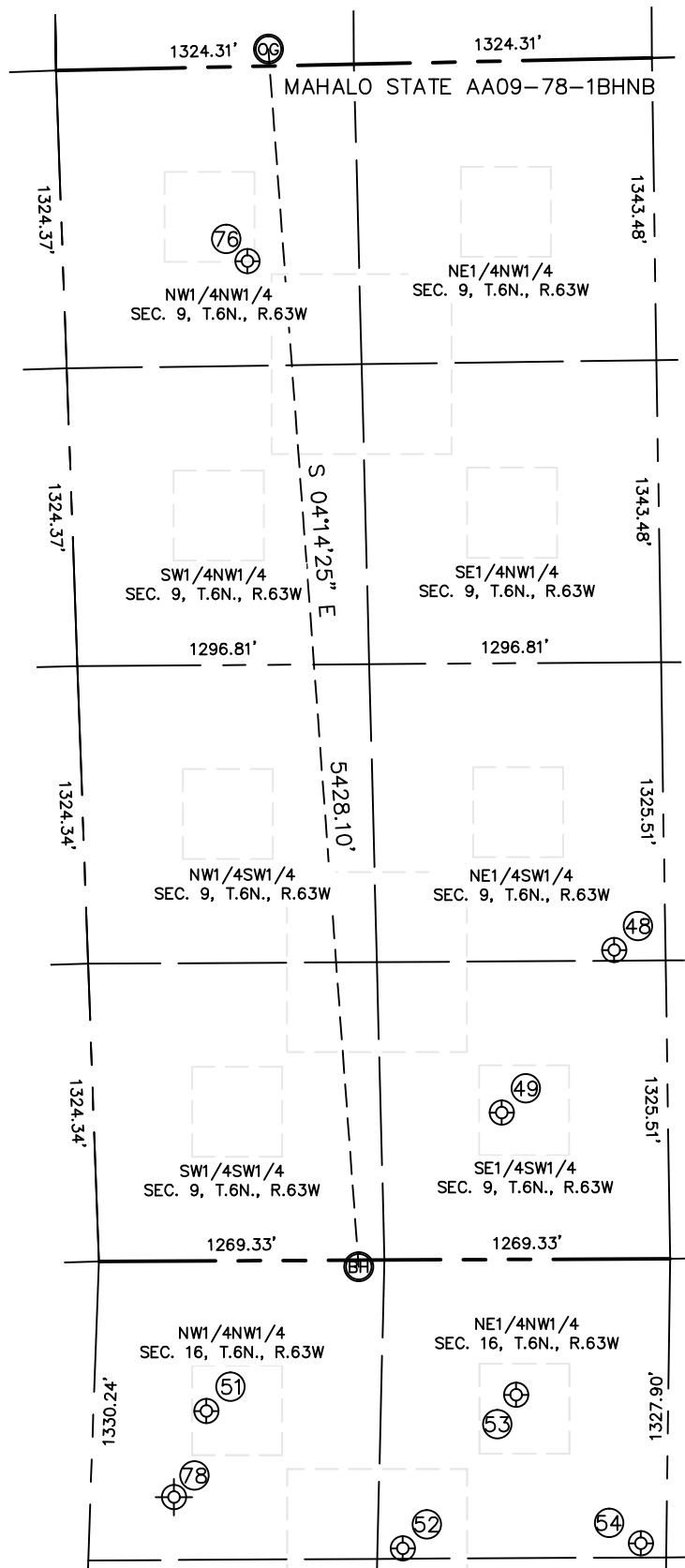


Lat40°, Inc. 1635 Foxtrail Drive, Suite 325 Loveland, CO 970-776-3321

SITE SKETCH

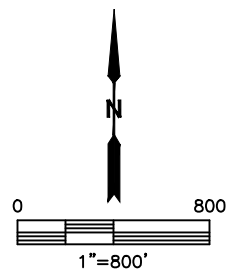
MAHALO STATE AA09-78-1BHN

SECTION: 4
TOWNSHIP: 6N
RANGE: 63W



WELL #	WELL NAME	SHL FOOTAGE			SHL LAT °	SHL LONG °	PDOP	ELEV (FT.)	1/4/1/4
48	BASHOR PCAA 9-9-14	1373	FSL	8832	40.49575	104.44430	2.1	4687	NESW
49	BASHOR PCAA 9-9-14	653	FSL	1811	40.49575	104.44430	1.7	4686	SESW
51	BASHOR STATE AA 16-4	667	FNL	501	40.49215	104.444908	1.5	4684	NWNNW
52	BASHOR STATE AA 16-19	1283	FNL	1399	40.49044	104.444596	1.8	4683	NENW
53	BASHOR STATE AA 16-3	603	FNL	1874	40.49230	104.444413	1.8	4681	NENW
54	BASHOR STATE 16-18	1265	FNL	2451	40.49047	104.444216	1.9	4686	NENW
76	GIBSON 11-9	866	FNL	820	40.50617	104.444820	1.6	4704	NWNNW
78	GUNNER STATE AA #16-99HZ (P&A)	1050	FNL	370	40.49107	104.45014	NA	4682	NWNNW

NOTE: THE ABANDONED WELL DATA SHOWN IN RED ABOVE WAS OBTAINED FROM COGCC SCOUT CARDS.



DATE: 8/21/2014
PROJECT#: 2013042