

<div><div><div>RMWS</div><div>ROCKY MOUNTAIN WIRELINE SERVICE</div></div></div>			TEMPERATURE / CCL LOG		
Company WPX ENERGY					
Well KP 431-9					
Field KOKOPELLI					
County GARFIELD			State COLORADO		
Location:			API # : 05-045-22218-00		Other Services
			SHL: 2313' FNL & 2158' FEL. BHL: 0826' FNL & 1564' FEL.		
Permanent Datum SEC 9 TWP 6S RGE 91W			G.L.	Elevation	
Log Measured From K.B.			K.B.	5783'	
Drilling Measured From K.B.			Ft Above PD	21'	G.L. 5762'
Date 07-24-2014					
Run Number			ONE		
Depth Driller			5985'		
Present Depth Driller			NA		
Depth Logger			6110'		
Bottom Logged Interval			6110'		
Top Log Interval			SURFACE		
Fluid Level			FULL		
Type Fluid			WATER		
Max. Recorded Temp.			159.1° F		
Estimated Cement Top			2447'		
Equipment Number			219		
Location			GRAND JCT.		
Recorded By			FERNANDEZ		
Witnessed By			MR. GEARY		
Run Number			Borehole Record		Casing Record
			Bit	From	To
ONE					
TWO					

<<< Fold Here >>>

All interpretations are opinions based on inferences from electrical or other measurements and we cannot and do not guarantee the accuracy or correctness of any interpretation, and we shall not, except in the case of gross or willful negligence on our part, be liable or responsible for any loss, costs, damages, or expenses incurred or sustained by anyone resulting from any interpretation made by any of our officers, agents or employees. These interpretations are also subject to our general terms and conditions set out in our current Price Schedule.

WARRIOR 7.0 SOFTWARE - Comments

NOTE: THERE WAS NO LOG TO CORRELATE TO.

MAX TEMP = 159.1° F

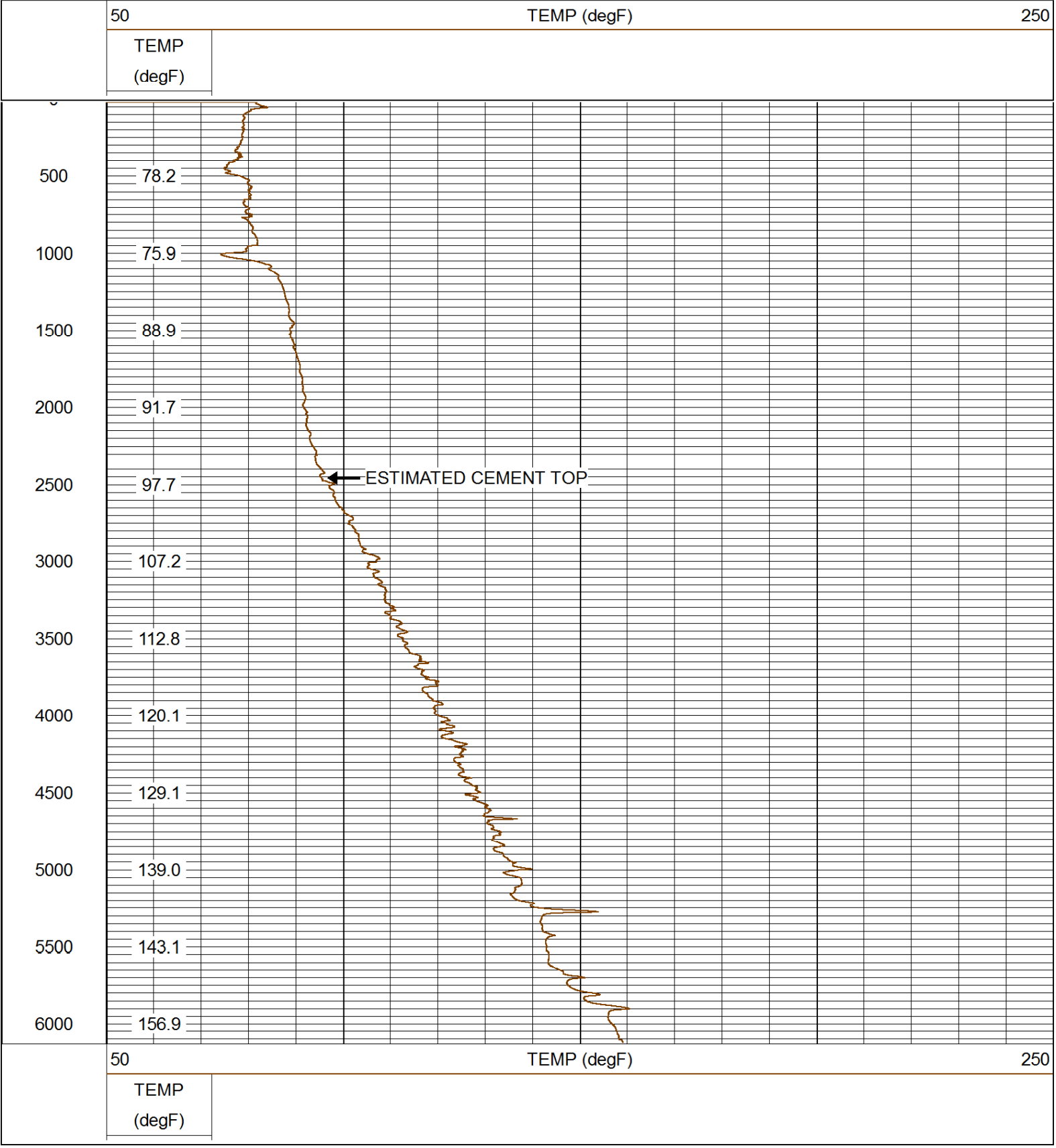
SHORT JOINT = 2757 ' TO 2781'

MAIN PASS 5" = 100'
CSG PSI = STATIC



QUICK LOOK PASS

Database File: 07242014_wpx_kp_431-9.db
Dataset Pathname: down/pass1.3
Presentation Format: rmtemp_q
Dataset Creation: Thu Jul 24 20:46:05 2014 by Calc SCH 120430
Charted by: Depth in Feet scaled 1:10000



Company WPX ENERGY
Well KP 431-9
Field KOKOPELLI
County GARFIELD
State COLORADO