



410 17th Street, Suite 1500
Denver, CO 80202
(720) 440-6100 phone
(720) 279-2331 fax

Bonanzacrk.com



24 June 2014

70 Ranch, LLC
8301 E. Prentice Avenue
Suite 100
Greenwood Village, CO 80111
Attn: Mr. Ron von Lembke

RE: Surface Owner Waivers - COGCC Wattenberg Window and Twinning Rules (318A.a., 318A.c.)

North Platte F-13 Pad NWNW Sec. 13, T5N, R63W, 6th PM, Weld County, Colorado
Ex. North Platte 11-14-13HNB (615' FNL, 1225' FWL), Ex. North Platte K-O-13HNC (595' FNL, 1225' FWL),
North Platte K21-O24-13HC (553' FNL, 1174' FWL), North Platte K21-O24-13HNB (533' FNL, 1174' FWL),
North Platte 21-24-13HNC (513' FNL, 1174' FWL), North Platte 21-24-13HNC (493' FNL, 1174' FWL),
North Platte F21-J24-13HC (473' FNL, 1174' FWL), North Platte F-J-13HNC (453' FNL, 1174' FWL)
North Platte F-13-A-7 (424' FNL, 1275' FWL), North Platte F-13-A-8 (424' FNL, 1295' FWL)
North Platte F-13-A-9 (425' FNL, 1315' FWL), North Platte F-13-A-10 (425' FNL, 1335' FWL)
North Platte F-13-A-11 (425' FNL, 1355' FWL)

Dear von Lembke,

Bonanza Creek Energy, Inc. (Bonanza) intends to drill the above referenced Niobrara and Codell Fm. horizontal oil and gas wells, to be located as described above.

The Colorado Oil and Gas Conservation Commission (COGCC) has implemented certain rules which pre-determine the location of oil and gas wells in this area; and to which exemptions may be granted with the Surface Owner's approval.

COGCC Rule 318A.a. defines a "400' Greater Wattenberg Area (GWA) Window" as "A square with sides four hundred (400) feet in length, the center of which is the center of any governmental quarter-quarter section." The rule also defines an 800' GWA Window as "a square with sides eight hundred (800) feet in length, the center of which is the center of any governmental quarter section." In order drill to horizontal wells with sufficient lateral length in the producible zone; the wellhead surface locations have been staked outside of the associated GWA Window.

COGCC Rule 318A.c. requires that an exception be granted by the Surface Owner for a well permitted to be greater than 50' from an existing well in the same quarter-quarter. In order to drill horizontal wells with sufficient lateral length in the producible zone, and build sufficient production facilities on location, the wells have been staked greater than 50' from existing wells in NWNW Sec. 13-5N-62W.

Bonanza respectfully requests you or your authorized agent complete and sign the attached form; and scan and email the signed waiver to REdelen@bonanzacrk.com. If you prefer, you may also fax it to (720) 279-2331, to the attention of Randy Edelen. Please do not hesitate to call me, at (720) 440-6136, should you have any questions or concerns.

Sincerely,

**BONANZA CREEK ENERGY, INC.
BONANZA CREEK ENERGY OPERATING COMPANY, LLC**

Randy Edelen P.E.
Regulatory Specialist

CORPORATE OFFICE
410 17th Street, Suite 1500
Denver, CO 80202
Office: (720) 440-6100



SURFACE OWNER'S RESPONSE LETTER
COGCC Rule 318A.a and 318A.c Exceptions

North Platte F-13 Pad NWNW Sec. 13, T5N, R63W, 6th PM, Weld County, Colorado
Ex. North Platte 11-14-13HNB (615' FNL, 1225' FWL), Ex. North Platte K-O-13HNC (595' FNL, 1225' FWL),
North Platte K21-O24-13HC (553' FNL, 1174' FWL), North Platte K21-O24-13HNB (533' FNL, 1174' FWL),
North Platte 21-24-13HNC (513' FNL, 1174' FWL), North Platte 21-24-13HNC (493' FNL, 1174' FWL),
North Platte F21-J24-13HC (473' FNL, 1174' FWL), North Platte F-J-13HNC (453' FNL, 1174' FWL)
North Platte F-13-A-7 (424' FNL, 1275' FWL), North Platte F-13-A-8 (424' FNL, 1295' FWL)
North Platte F-13-A-9 (425' FNL, 1315' FWL), North Platte F-13-A-10 (425' FNL, 1335' FWL)
North Platte F-13-A-11 (425' FNL, 1355' FWL)

Having reviewed Bonanza Creek Energy, Inc.'s letter **Surface Owner Waivers, COGCC Wattenberg Window and Twinning Rules** dated **24 June 2014**, the undersigned Surface Owner or Designated Representative hereby grants Bonanza Creek Energy, Inc. exceptions to the following COGCC Rules with respect to the above referenced well locations.

COGCC Rule 318A.a – Well location within a GWA Window
COGCC Rule 318A.c – Well location within 50' of an existing well

Signed and Dated this 1st day of July, 2014.

SURACE OWNER or DESIGNATED REPRESENTATIVE:

By [Signature]

By _____

Printed Name Paul E. Vukobrat

Printed Name _____

Title Designated Representative

Title _____

Phone Number 303-773-1005 x221

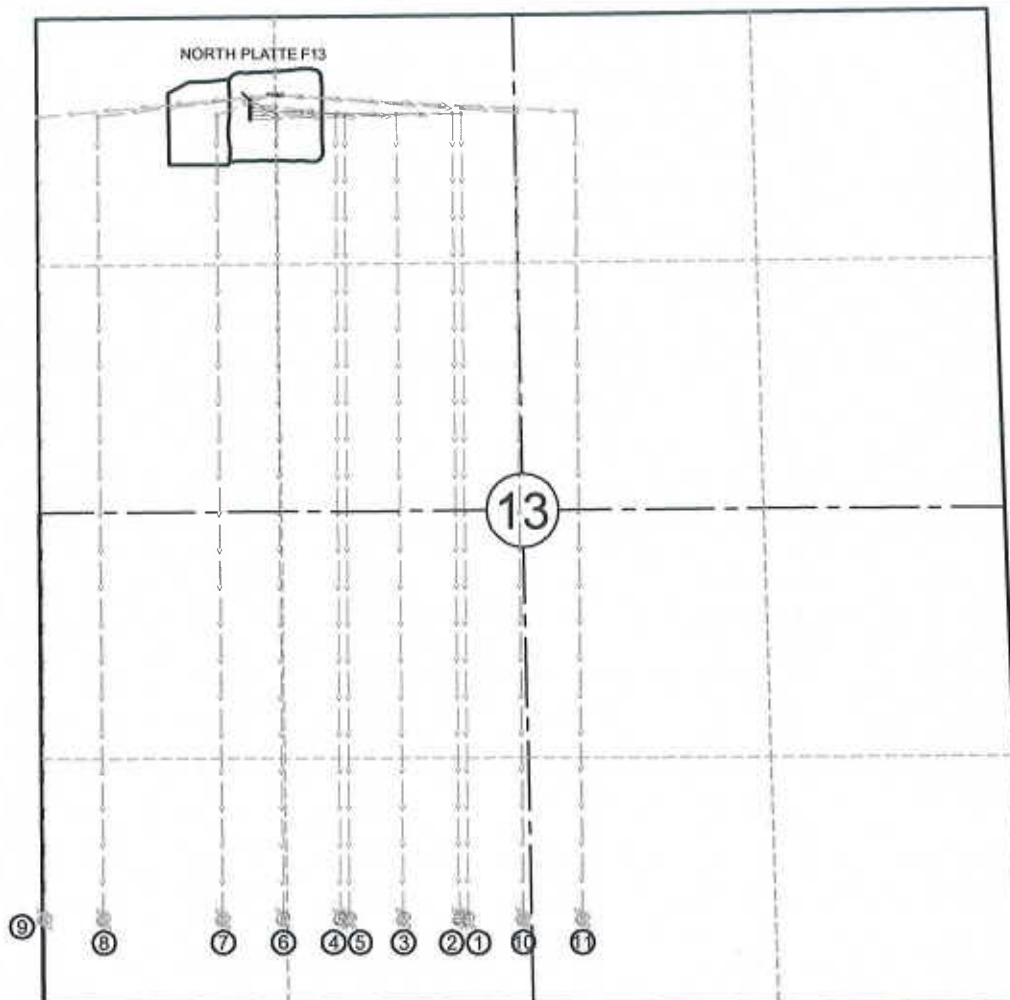
Phone Number _____

Designated Representative (if any)

Designated Representative (Agent): _____

Address: _____

Telephone: Home _____ Work _____



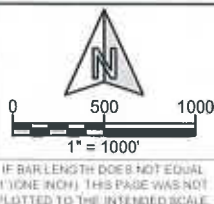
- ① NP K21-024-13HC
SURFACE LOCATION:
553' FNL, 1174' FWL
LAT 40.40512°
LONG 104.39008°
TARGET 1:
531' FNL, 2335' FWL
LAT 40.40518°
LONG 104.38591°
BOTTOM HOLE:
470' FSL, 2335' FWL
LAT 40.39319°
LONG 104.38600°
 - ② NP K21-024-13HNB
SURFACE LOCATION:
533' FNL, 1174' FWL
LAT 40.40517°
LONG 104.39008°
TARGET 1:
531' FNL, 2285' FWL
LAT 40.40518°
LONG 104.38609°
BOTTOM HOLE:
470' FSL, 2285' FWL
LAT 40.39319°
LONG 104.38618°
 - ③ NP 21-24-13HNC
SURFACE LOCATION:
513' FNL, 1174' FWL
LAT 40.40523°
LONG 104.39008°
TARGET 1:
531' FNL, 1980' FWL
LAT 40.40518°
LONG 104.38718°
BOTTOM HOLE:
470' FSL, 1980' FWL
LAT 40.39319°
LONG 104.38727°
 - ④ NP 21-24-13HNC
SURFACE LOCATION:
493' FNL, 1174' FWL
LAT 40.40528°
LONG 104.39007°
TARGET 1:
531' FNL, 1643' FWL
LAT 40.40518°
LONG 104.38839°
BOTTOM HOLE:
470' FSL, 1633' FWL
LAT 40.39320°
LONG 104.38852°
 - ⑤ NP F21-J24-13HC
SURFACE LOCATION:
473' FNL, 1174' FWL
LAT 40.40534°
LONG 104.39007°
TARGET 1:
531' FNL, 1693' FWL
LAT 40.40518°
LONG 104.38821°
BOTTOM HOLE:
470' FSL, 1683' FWL
LAT 40.39320°
LONG 104.38834°
 - ⑥ NP F-J-13HNC
SURFACE LOCATION:
453' FNL, 1174' FWL
LAT 40.40539°
LONG 104.39007°
TARGET 1:
531' FNL, 1320' FWL
LAT 40.40518°
LONG 104.38955°
BOTTOM HOLE:
470' FSL, 1320' FWL
LAT 40.39321°
LONG 104.38964°
 - ⑦ NP F-13-A-7
SURFACE LOCATION:
424' FNL, 1275' FWL
LAT 40.40547°
LONG 104.38971°
 - ⑧ NP F-13-A-8
SURFACE LOCATION:
424' FNL, 1295' FWL
LAT 40.40547°
LONG 104.38964°
 - ⑨ NP F-13-A-9
SURFACE LOCATION:
425' FNL, 1315' FWL
LAT 40.40547°
LONG 104.38956°
 - ⑩ NP F-13-A-10
SURFACE LOCATION:
425' FNL, 1335' FWL
LAT 40.40547°
LONG 104.38949°
 - ⑪ NP F-13-A-11
SURFACE LOCATION:
425' FNL, 1355' FWL
LAT 40.40547°
LONG 104.38942°

SHEET NO:

2 of 9



Drawn By: DAF
Checked By: JH
Date: 11/14/13
Revision: 1
Date: 6/18/14
Explanation: Revise overall well plan



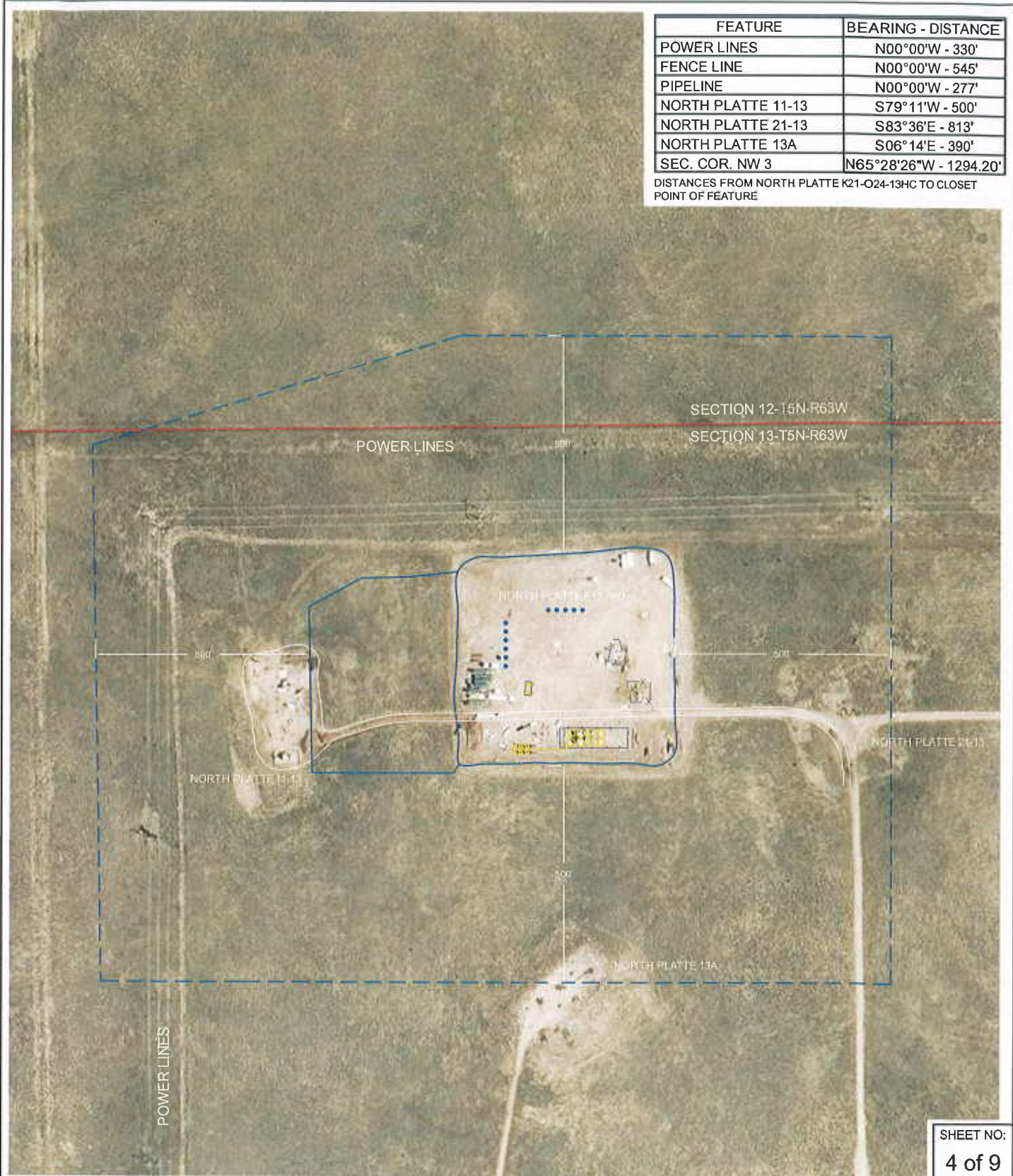
WELL-PLAN

NORTH PLATTE F-13 PAD
N $\frac{1}{2}$ NW $\frac{1}{4}$, SECTION 13,
T.5N., R.63W., 6th PM
WELD COUNTY, COLORADO



FEATURE	BEARING - DISTANCE
POWER LINES	N00°00'W - 330'
FENCE LINE	N00°00'W - 545'
PIPELINE	N00°00'W - 277'
NORTH PLATTE 11-13	S79°11'W - 500'
NORTH PLATTE 21-13	S83°36'E - 813'
NORTH PLATTE 13A	S06°14'E - 390'
SEC. COR. NW 3	N65°28'26"W - 1294.20'

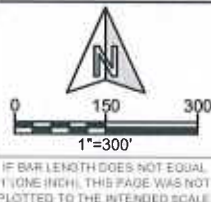
DISTANCES FROM NORTH PLATTE K21-O24-13HC TO CLOSEST POINT OF FEATURE



SHEET NO:
4 of 9

Fremont
ENGINEERING & SURVEYING
64 COAL MINE RD.
LANDER, WY 82520
307-349-0840
fes@wyoming.com

Drawn By: DAF
Checked By: JH
Date: 11/14/13
Revision: 1
Date: 6/18/14
Explanation: Revise
overall well plan



LOCATION DRAWING

NORTH PLATTE F-13 PAD
N½NW¼, SECTION 13,
T.5N., R.63W., 6th PM
WELD COUNTY, COLORADO

BONANZA CREEK
410 17th Street
Denver, CO 80202
(720) 440-6100