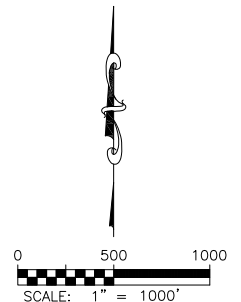
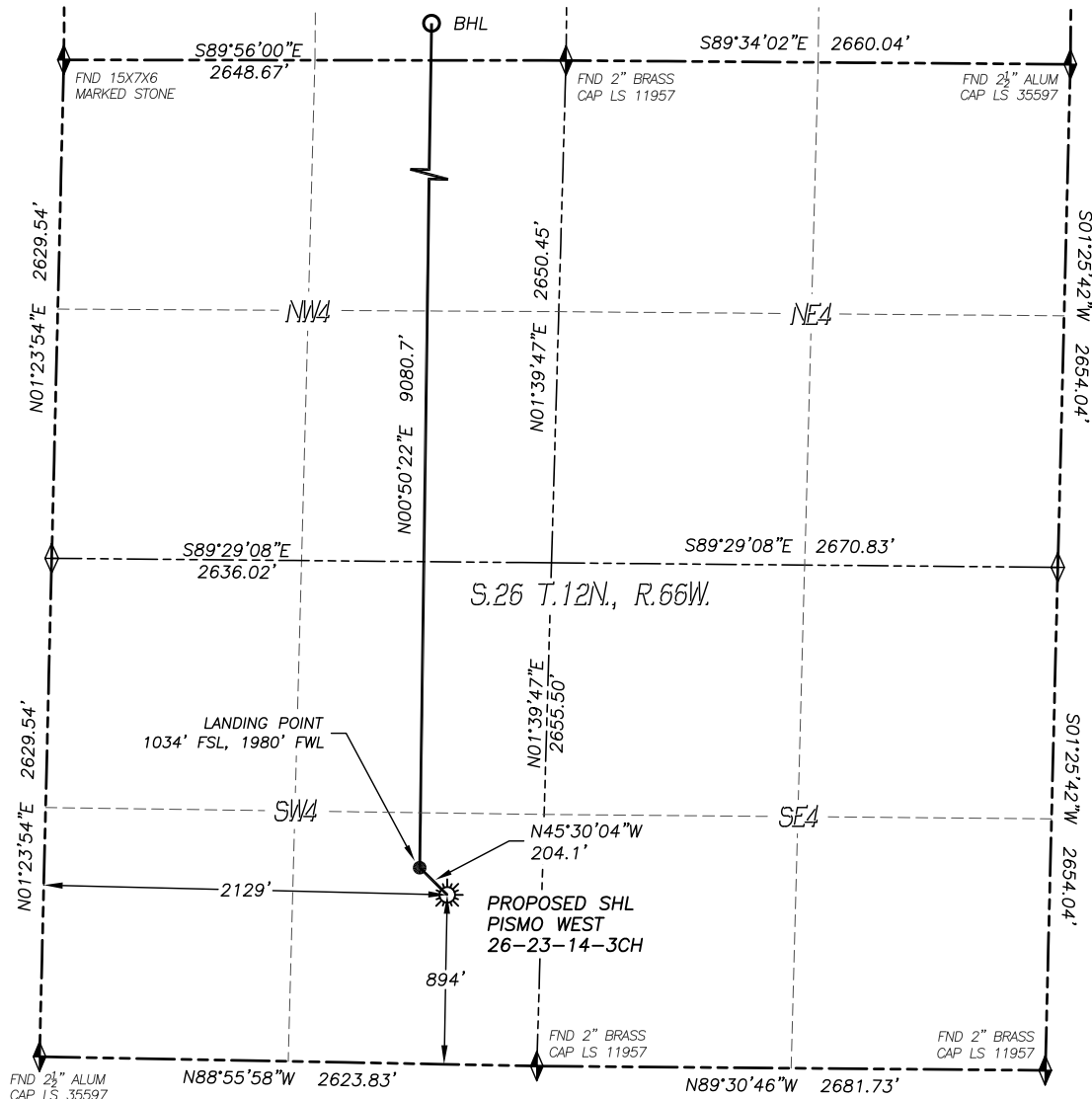


# WELL LOCATION CERTIFICATE

## PISMO WEST 26-23-14-3CH

SECTION 26, TOWNSHIP 12 NORTH, RANGE 66 WEST OF THE 6TH P.M.

**LEGEND**

- ◆ FOUND MONUMENT
- ◇ CALCULATED POSITION
- ☀ PROPOSED WELL
- BOTTOM HOLE
- ⊗ ABANDONED WELL
- ⊙ EXISTING WELL

IN ACCORDANCE WITH A REQUEST FROM CIRQUE RESOURCES LP., DALEY LAND SURVEYING, INC. HAS DETERMINED THE SURFACE LOCATION OF THE PISMO WEST 26-23-14-3CH WELL TO BE 894' FSL, 2129' FWL, AS MEASURED AT NINETY (90) DEGREES FROM THE SECTION LINES OF SECTION 26, TOWNSHIP 12 NORTH, RANGE 66 WEST, AND THE BOTTOM HOLE LOCATION TO BE 330' FROM STATE LINE, 1980' FWL, AS MEASURED AT NINETY (90) DEGREES FROM THE COLORADO - WYOMING STATE LINE AND THE WEST SECTION LINE OF SECTION 23, TOWNSHIP 12 NORTH, RANGE 66 WEST, OF THE 6TH PRINCIPAL MERIDIAN, WELD COUNTY, COLORADO.

I HEREBY STATE THAT THIS WELL LOCATION CERTIFICATE WAS PREPARED BY ME OR UNDER MY DIRECT SUPERVISION, THAT THE WORK WAS COMPLETED ON 8/8/2014 FOR AND ON BEHALF OF CIRQUE RESOURCES LP., AND THAT THIS MAP DOES NOT REPRESENT A BOUNDARY SURVEY, IT IS NOT A LAND SURVEY PLAT OR AN IMPROVEMENT SURVEY PLAT AND IT IS NOT TO BE RELIED UPON FOR THE ESTABLISHMENT OF FENCE, BUILDING OR OTHER FUTURE IMPROVEMENT LINES.

**NOTES:**

- 1) BEARINGS FOR THIS MAP ARE ASSUMED AND BASED UPON GPS OBSERVATIONS MADE BETWEEN MONUMENTS LOCATED AT THE SOUTHEAST CORNER AND SOUTH QUARTER CORNER OF SECTION 26, T.12N., R.66W.
- 2) HORIZONTAL DATUM IS NAD83.
- 3) VERTICAL DATUM IS NAVD88 AND ORIGINATES FROM THE LOCAL C.O.R.S. NETWORK, UTILIZING THE GEOID12A MODEL.
- 4) SEE LOCATION DRAWING FOR VISIBLE IMPROVEMENTS WITHIN 500' OF PROPOSED DISTURBED AREA.
- 5) SURFACE USE: RANGELAND.
- 6) INST. OPERATOR: SCOTT ESTABROOKS

**NEAREST CULTURAL ITEMS:**

- |                                |           |
|--------------------------------|-----------|
| 1. BUILDING:                   | 4280'± NE |
| 2. BUILDING UNIT:              | 5085'± NE |
| 3. HIGH OCC. BLD. UNIT:        | 5280'±    |
| 4. DES. OUTSIDE ACTIVITY AREA: | 5280'±    |
| 5. PUBLIC ROAD:                | 5078'± NE |
| 6. ABOVE GROUND UTILITY:       | 1326'± NW |
| 7. RAILROAD:                   | 5280'±    |
| 8. PROPERTY LINE:              | 498'± E   |

**NAD 83 LATITUDE AND LONGITUDE****SURFACE LOCATION:**

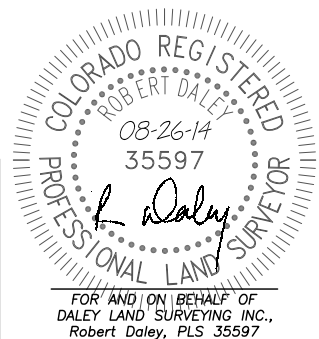
LATITUDE: N40.97390°  
 LONGITUDE: W104.74518°  
 ELEVATION: 6216'  
 PDOP: 1.2  
 QTR/QTR: SE4/SW4

**LANDING POINT:**

LATITUDE: N40.97429°  
 LONGITUDE: W104.74570°

**BOTTOM HOLE:**

LATITUDE: N40.99921°  
 LONGITUDE: W104.74524°



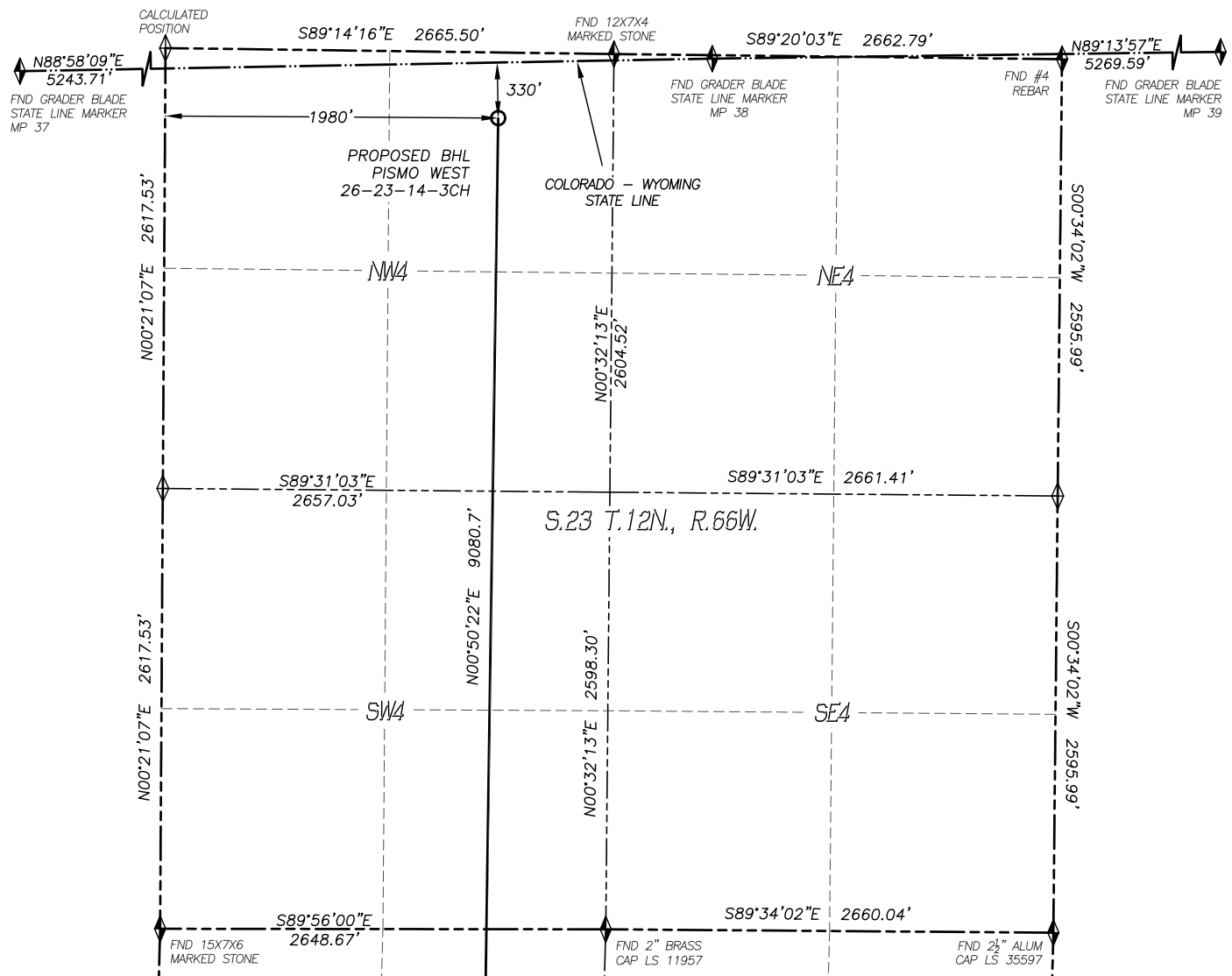
SHEET 1 OF 2

Drawing Date: 9/02/14

# WELL LOCATION CERTIFICATE

## PISMO WEST 26-23-14-3CH

SECTION 26, TOWNSHIP 12 NORTH, RANGE 66 WEST OF THE 6TH P.M.



### LEGEND

- FOUND MONUMENT
- CALCULATED POSITION
- PROPOSED WELL
- BOTTOM HOLE
- ABANDONED WELL
- EXISTING WELL

0 500 1000  
SCALE: 1" = 1000'