

<div><div><div><div></div><div>RMWS</div><div>ROCKY MOUNTAIN WIRELINE SERVICE</div></div></div></div>				TEMPERATURE LOG CCL			
Company WPX ENERGY							
Well NER 533-32							
Field RULISON							
County GARFIELD				State COLORADO			
Location:		API # : 05-045-21796-00		Other Services			
		LONGITUDE: -107.798903					
		LATITUDE: 39.475008					
SEC 5		TWP 7S	RGE 93W				
Permanent Datum		G.L.	Elevation	7603'		Elevation	
Log Measured From		K.B.	Ft Above PD	26'		K.B. 7629' D.F. 7628'	
Drilling Measured From		KB.			G.L. 7603'		
Date		08-09-2014					
Run Number		ONE					
Depth Driller		10330'					
Present Depth Driller		NA					
Depth Logger		10250'					
Bottom Logged Interval		10250'					
Top Log Interval		SURFACE					
Fluid Level		FULL					
Type Fluid		WATER					
Max. Recorded Temp.		233.4° F					
Estimated Cement Top		3890'					
Equipment Number		219					
Location		GRAND JCT.					
Recorded By		FERNANDEZ					
Witnessed By		MR. HARTL					
Borehole Record		Casing Record					
Run Number	Bit	From	To	Size	Weight	From	To
ONE							
TWO							

<<< Fold Here >>>

All interpretations are opinions based on inferences from electrical or other measurements and we cannot and do not guarantee the accuracy or correctness of any interpretation, and we shall not, except in the case of gross or willful negligence on our part, be liable or responsible for any loss, costs, damages, or expenses incurred or sustained by anyone resulting from any interpretation made by any of our officers, agents or employees. These interpretations are also subject to our general terms and conditions set out in our current Price Schedule.

WARRIOR 7.0 SOFTWARE - Comments

NOTE: THERE WAS NO LOG TO CORRELATE TO.

MAX TEMP = 233.4° F

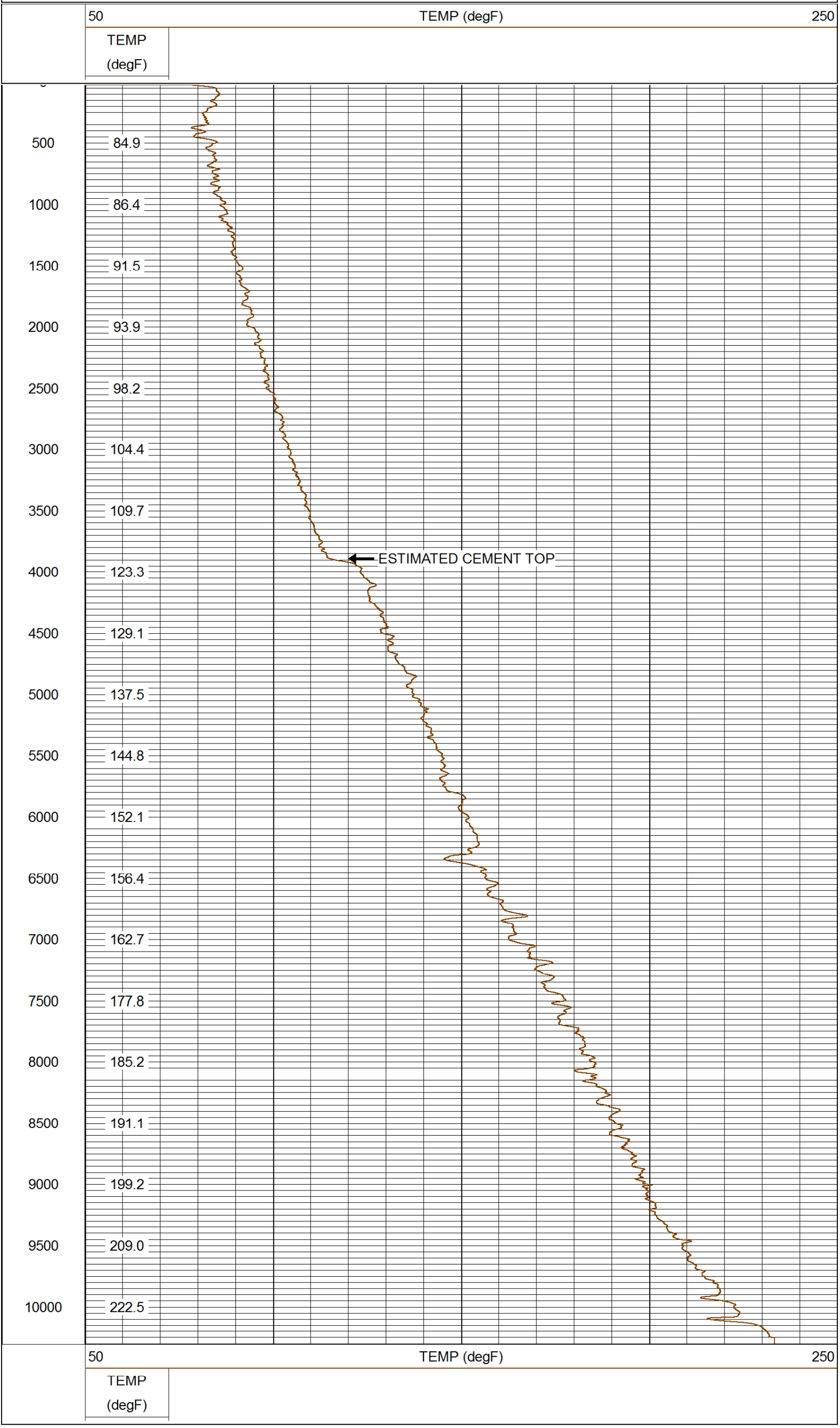
SHORT JOINTS = 6936' TO 6959'

MAIN PASS 5" = 100'  
CSG PSI = STATIC



# QUICK LOOK

Database File: 08092014\_wpx\_ner\_533-32.db  
Dataset Pathname: pass1.1  
Presentation Format: rmtemp\_q  
Dataset Creation: Sat Aug 09 12:57:41 2014 by Calc SCH 120430  
Charted by: Depth in Feet scaled 1:10000



Company WPX ENERGY  
Well NER 533-32  
Field RULISON  
County GARFIELD  
State COLORADO