

<div><div><div>RMWS</div><div>ROCKY MOUNTAIN WIRELINE SERVICE</div></div></div>				TEMPERATURE / CCL LOG			
Company WPX ENERGY LLC							
Well NER 34-32							
Field RULISON							
County GARFIELD				State COLORADO			
Location:		API # : 0504521784		Other Services			
SHL: 132' FNL, 2587' FWL, SEC.5, TWP. 7S, RGE93W. BHL: 1116' FSL, 1971' FEL, SEC.32, TWP. 6S, RGE93W.							
SEC 5 TWP 7S RGE 93W							
Permanent Datum		G.L.		Elevation		Elevation	
Log Measured From		K.B.		Ft Above PD		K.B. 7629'	
Drilling Measured From		K.B.				D.F. G.L. 7603'	
Date		07-10-2014					
Run Number		ONE					
Depth Driller		10240'					
Present Depth Driller							
Depth Logger		10210'					
Bottom Logged Interval		10210'					
Top Log Interval		SURFACE					
Fluid Level		FULL					
Type Fluid		WATER					
Max. Recorded Temp.		232.7 DEG. F					
Estimated Cement Top		3780'					
Equipment Number		209					
Location		GRAND JCT.					
Recorded By		MCBROOM					
Witnessed By		M/R. HARTL					
Borehole Record				Casing Record			
Run Number		Bit From To		Size		Weight From To	
				9.625"		32# SURFACE 1101'	
				4.50"		11.6# SURFACE 10240'	

<<< Fold Here >>>

All interpretations are opinions based on inferences from electrical or other measurements and we cannot and do not guarantee the accuracy or correctness of any interpretation, and we shall not, except in the case of gross or willful negligence on our part, be liable or responsible for any loss, costs, damages, or expenses incurred or sustained by anyone resulting from any interpretation made by any of our officers, agents or employees. These interpretations are also subject to our general terms and conditions set out in our current Price Schedule.

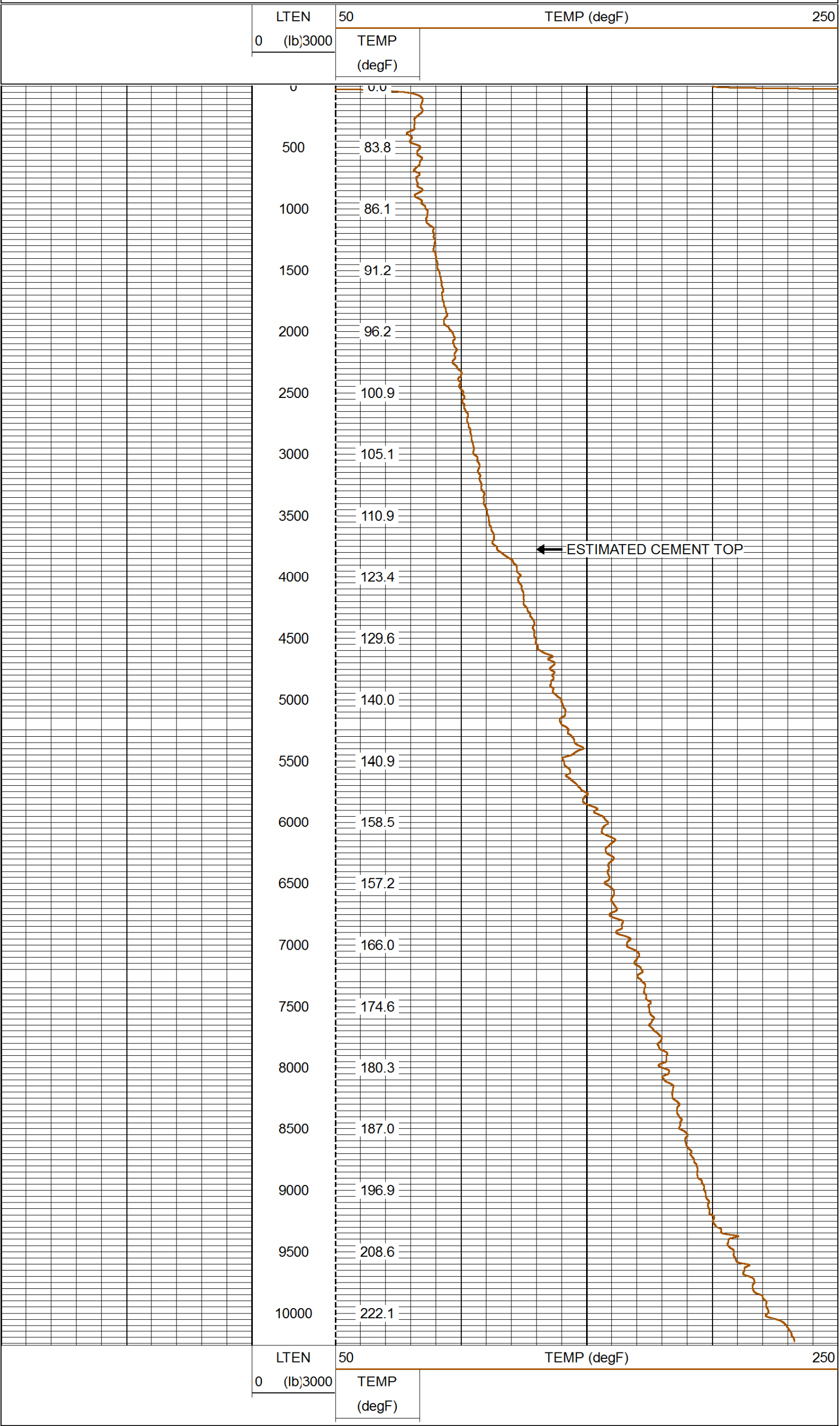
WARRIOR 7.0 SOFTWARE - Comments

NOTE;
CSG PSI = STATIC
MAIN PASS SCALE = 5"=100'



QUICK LOOK PASS

Database File: 07102014_wpx_ner34-32.db
Dataset Pathname: mainpass/pass2.1
Presentation Format: rmws_tem
Dataset Creation: Thu Jul 10 23:33:35 2014
Charted by: Depth in Feet scaled 1:10000



Company WPX ENERGY LLC
Well NER 34-32
Field RULISON
County GARFIELD
State COLORADO