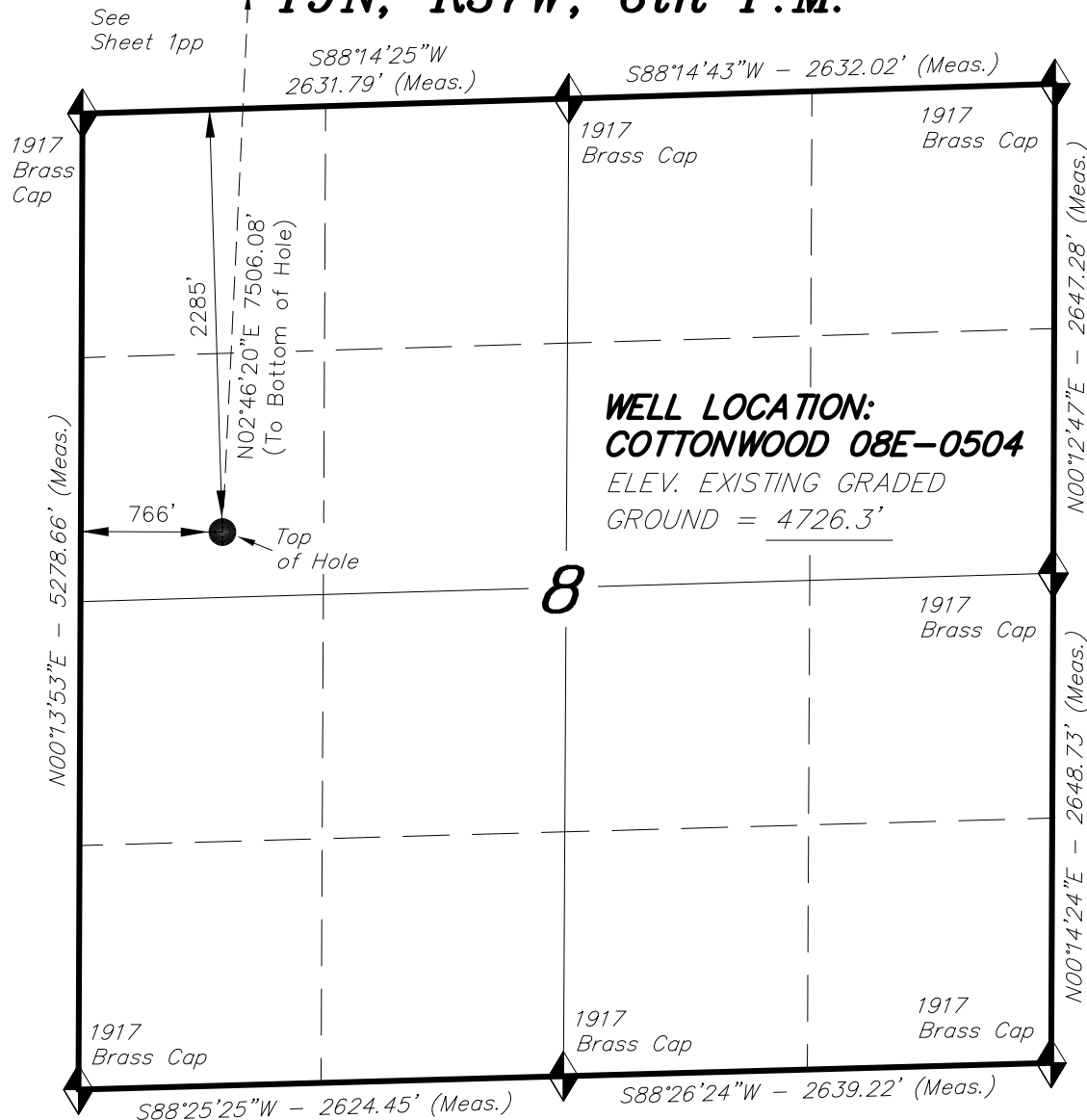
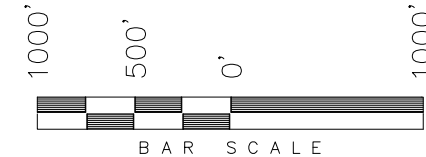


**T9N, R57W, 6th P.M.**



**WHITING OIL & GAS CORP.**

WELL LOCATION, COTTONWOOD 08E-0504,  
LOCATED AS SHOWN IN THE SW 1/4  
NW 1/4 OF SECTION 8, T9S, R57W,  
6th P.M. WELD COUNTY, COLORADO.



**NOTES:**

1. Bearings are based on Global Positioning Satellite observations.
2. G.P.S. Operator: Q. Miller, (PDOP) = 1.7

**IMPROVEMENT NOTE:**

See addendum to legal plat (Sheet 2) for visible improvements within 500' of the proposed location.

THIS IS TO CERTIFY THAT THE ABOVE PLAT WAS PREPARED FROM FIELD NOTES OF REAL SURVEYS MADE BY ME OR UNDER MY SUPERVISION. THE LOCATION HAS BEEN STAKED ON THE GROUND AS SHOWN ON THE PLAT AND THAT THE SAME ARE TRUE AND CORRECT TO THE BEST OF MY KNOWLEDGE AND BELIEF.

07-01-14  
# 30125  
REGISTERED LAND SURVEYOR  
REGISTRATION NO. 30125  
STATE OF COLORADO  
TRI STATE LAND SURVEYING & CONSULTING

◆ = SECTION CORNERS LOCATED

BASIS OF ELEV; Elevations are based on an N.G.S. OPUS Correction. LOCATION: LAT. 40°46'03.41" LONG. 103°46'26.97" (Tristate Aluminum Cap) NAVD 88 Elev. 4750.22'

| NAD 83 (SURFACE LOCATION) |                              |
|---------------------------|------------------------------|
| LATITUDE                  | = 40°46'01.36" (40.767044)   |
| LONGITUDE                 | = 103°46'51.52" (103.780978) |
| NAD 27 (SURFACE LOCATION) |                              |
| LATITUDE                  | = 40°46'01.41" (40.767058)   |
| LONGITUDE                 | = 103°46'49.71" (103.780475) |

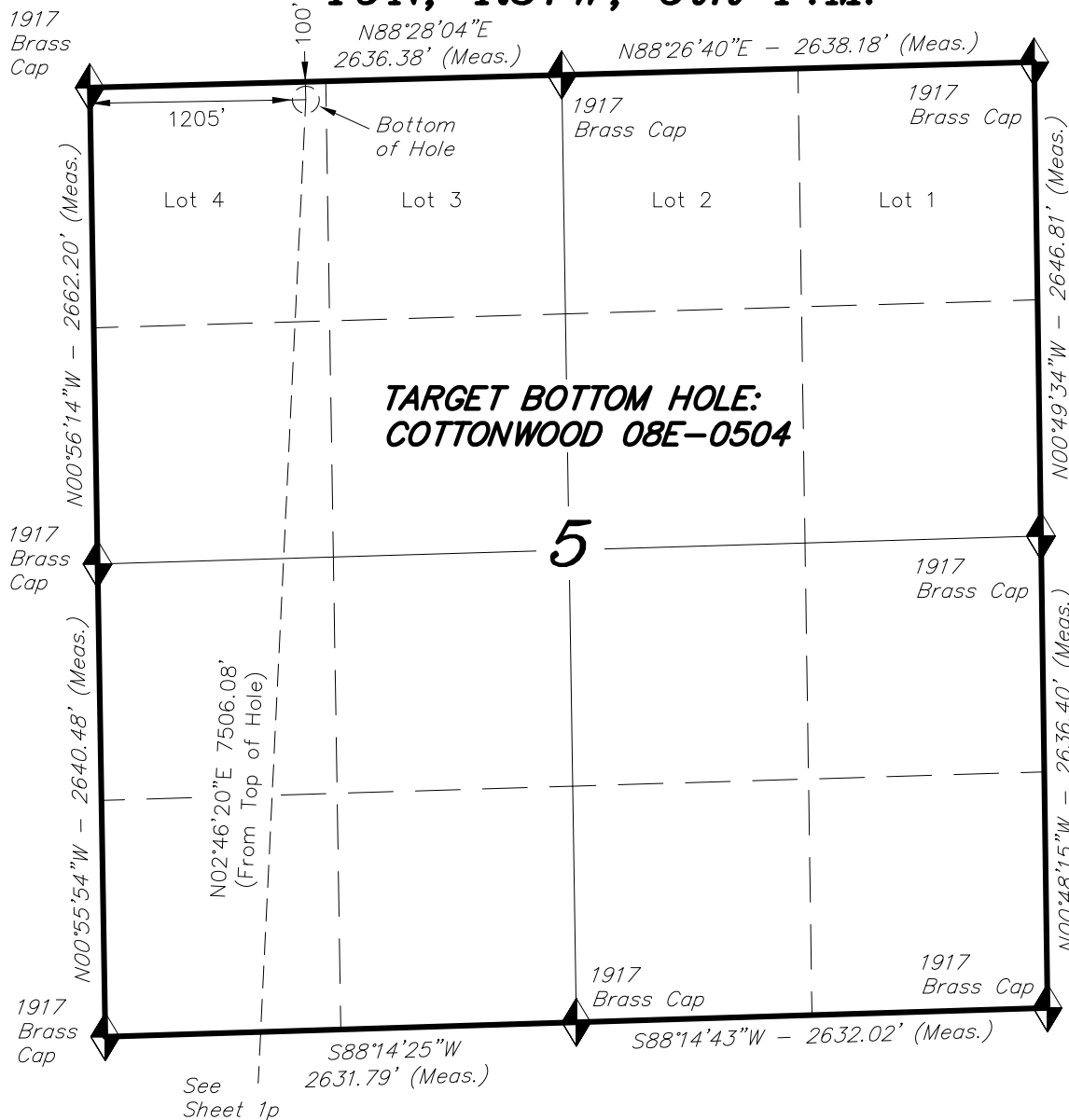
**TRI STATE LAND SURVEYING & CONSULTING**

180 NORTH VERNAL AVE. - VERNAL, UTAH 84078  
(435) 781-2501

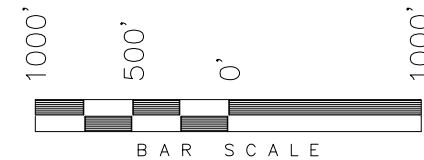
|                            |                   |                 |
|----------------------------|-------------------|-----------------|
| DATE SURVEYED:<br>06-02-14 | SURVEYED BY: C.S. | SHEET<br><br>1p |
| DATE DRAWN:<br>07-01-14    | DRAWN BY: V.H.    |                 |
| REVISED:                   | SCALE: 1" = 1000' |                 |

**T9N, R57W, 6th P.M.**

**WHITING OIL & GAS CORP.**



TARGET BOTTOM HOLE, COTTONWOOD 08E-0504, LOCATED AS SHOWN IN THE NW 1/4 NW 1/4 (LOT 4) OF SECTION 5, T9N, R57W, 6th P.M. WELD COUNTY, COLORADO.



**NOTES:**

1. Bearings are based on Global Positioning Satellite observations.



◆ = SECTION CORNERS LOCATED

THIS IS TO CERTIFY THAT THE ABOVE PLAT WAS PREPARED FROM FIELD NOTES OF REAL SURVEYS MADE BY ME OR UNDER MY SUPERVISION. THE LOCATION HAS BEEN STAKED ON THE GROUND AS SHOWN ON THE PLAT, AND THAT THE SAME ARE TRUE AND CORRECT TO THE BEST OF MY KNOWLEDGE AND BELIEF.

07-01-14  
# 30125  
REGISTERED LAND SURVEYOR  
REGISTRATION NO. 30125  
STATE OF COLORADO  
TRI STATE LAND SURVEYING & CONSULTING

BASIS OF ELEV; Elevations are based on an N.G.S. OPUS Correction. LOCATION: LAT. 40°46'03.41" LONG. 103°46'26.97" (Tristate Aluminum Cap) NAVD 88 Elev. 4750.22'

| NAD 83 (BOTTOM HOLE LOCATION) |                              |
|-------------------------------|------------------------------|
| LATITUDE                      | = 40°47'15.34" (40.787595)   |
| LONGITUDE                     | = 103°46'44.91" (103.779143) |
| NAD 27 (BOTTOM HOLE LOCATION) |                              |
| LATITUDE                      | = 40°47'15.39" (40.787609)   |
| LONGITUDE                     | = 103°46'43.11" (103.778640) |

**TRI STATE LAND SURVEYING & CONSULTING**  
180 NORTH VERNAL AVE. — VERNAL, UTAH 84078  
(435) 781-2501

|                            |                   |                  |
|----------------------------|-------------------|------------------|
| DATE SURVEYED:<br>06-02-14 | SURVEYED BY: C.S. | SHEET<br><br>1pp |
| DATE DRAWN:<br>07-01-14    | DRAWN BY: V.H.    |                  |
| REVISED:                   | SCALE: 1" = 1000' |                  |