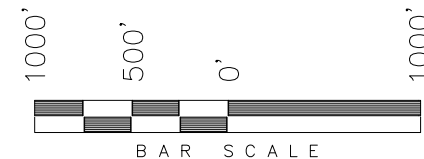


T9N, R57W, 6th P.M.

WHITING OIL & GAS CORP.

WELL LOCATION, COTTONWOOD 08E-0504,
LOCATED AS SHOWN IN THE SW 1/4
NW 1/4 OF SECTION 8, T9N, R57W,
6th P.M. WELD COUNTY, COLORADO.

TARGET BOTTOM HOLE, COTTONWOOD
08E-0504, LOCATED AS SHOWN IN THE
NW 1/4 SW 1/4 OF SECTION 8, T9N,
R57W, 6th P.M. WELD COUNTY, COLORADO.



NOTES:

1. Bearings are based on Global Positioning Satellite observations.
2. G.P.S. Operator: Q. Miller, (PDOP) = 1.7

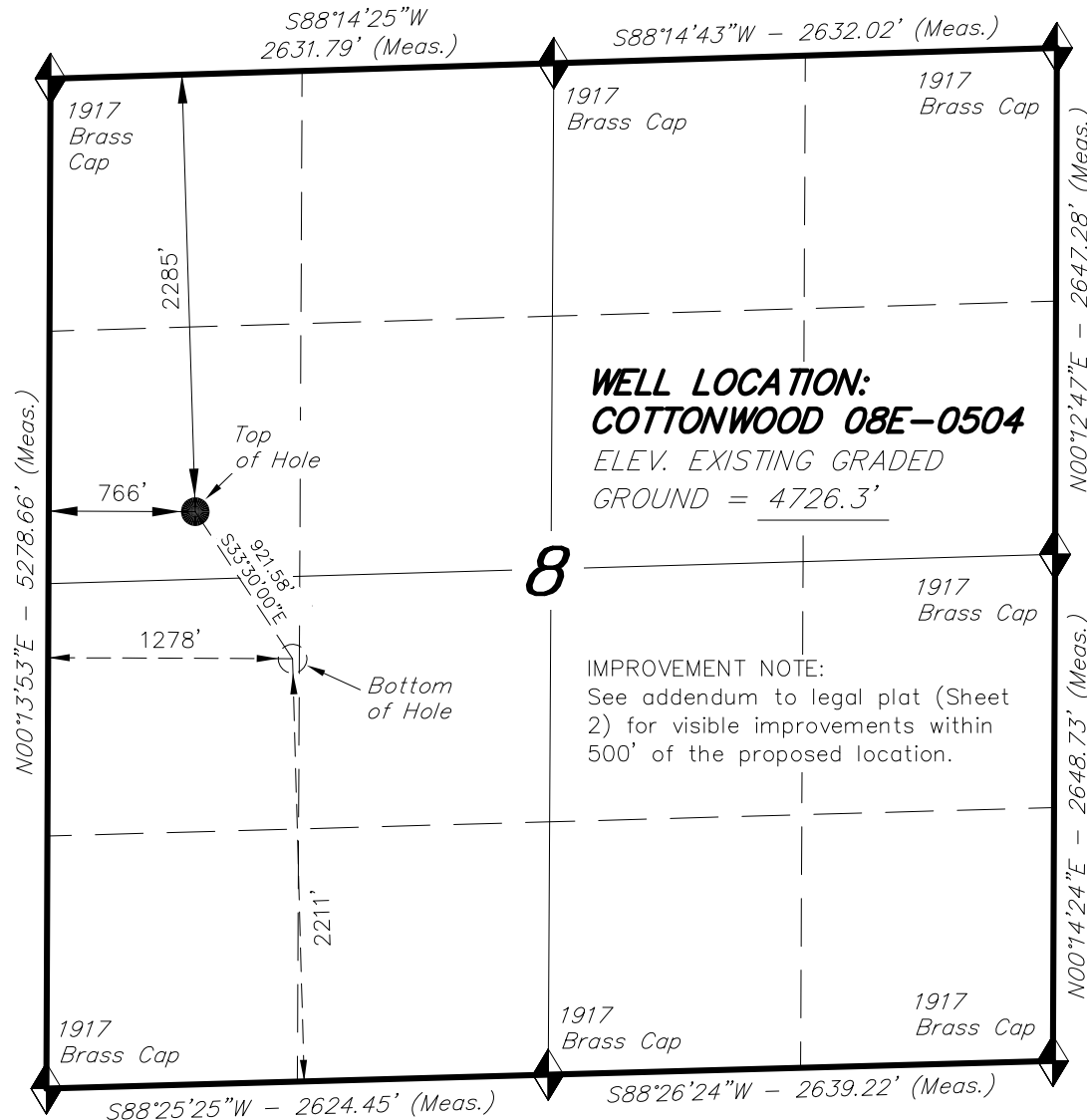
THIS IS TO CERTIFY THAT THE ABOVE PLAT WAS
PREPARED FROM FIELD NOTES OF REALITY SURVEYS
MADE BY ME OR UNDER MY SUPERVISION. THE
LOCATION HAS BEEN STAKED ON THE GROUND AS
SHOWN ON THE PLAT, AND THAT THE SAME ARE
TRUE AND CORRECT TO THE BEST OF MY
KNOWLEDGE AND BELIEF.

09-04-14
30125
REGISTERED LAND SURVEYOR
REGISTRATION # 30125
STATE OF COLORADO
TRI STATE LAND SURVEYING & CONSULTING

TRI STATE LAND SURVEYING & CONSULTING

180 NORTH VERNAL AVE. - VERNAL, UTAH 84078
(435) 781-2501

DATE SURVEYED: 06-02-14	SURVEYED BY: C.S.	SHEET 1p
DATE DRAWN: 09-04-14	DRAWN BY: M.W.	
REVISED:	SCALE: 1" = 1000'	



◆ = SECTION CORNERS LOCATED

BASIS OF ELEV; Elevations are based on an
N.G.S. OPUS Correction. LOCATION:
LAT. 40°46'03.41" LONG. 103°46'26.97"
(Tristate Aluminum Cap) NAVD 88 Elev. 4750.22'

NAD 83 (SURFACE LOCATION)	
LATITUDE = 40°46'01.36"	(40.767044)
LONGITUDE = 103°46'51.52"	(103.780978)
NAD 27 (SURFACE LOCATION)	
LATITUDE = 40°46'01.41"	(40.767058)
LONGITUDE = 103°46'49.71"	(103.780475)
NAD 83 (BOTTOM HOLE LOCATION)	
LATITUDE = 40°45'53.67"	(40.764909)
LONGITUDE = 103°46'45.11"	(103.779196)
NAD 27 (BOTTOM HOLE LOCATION)	
LATITUDE = 40°45'53.72"	(40.764923)
LONGITUDE = 103°46'43.30"	(103.778693)