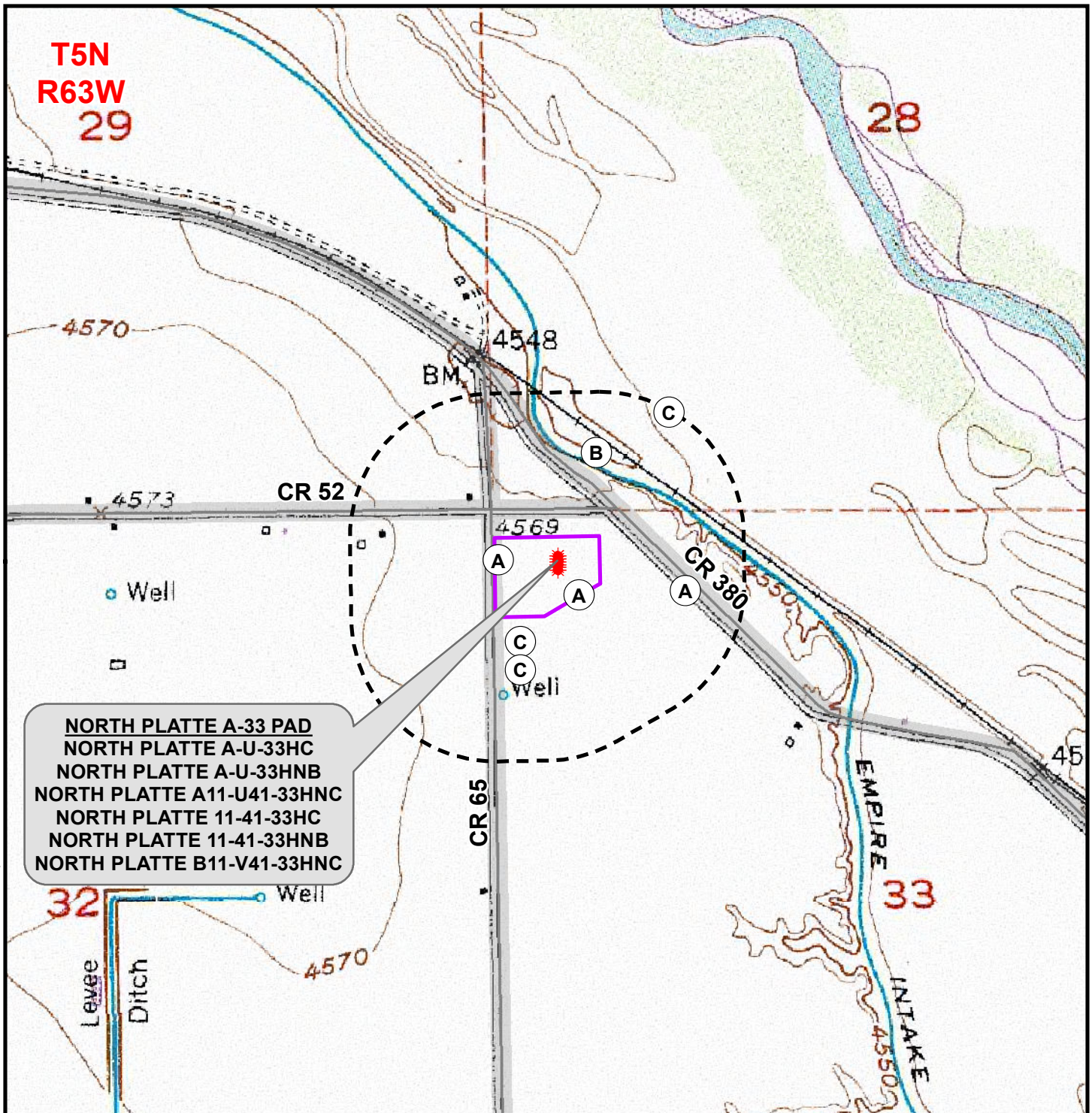


K:\BONANZA CREEK\2013_04_2014_WELL_STAKING\GIS\Maps_ABC\NorthPlatte A-33\NorthPlatte A-33 Hydro.mxd 9/4/2014 6:01:43 PM



Legend

- Well -Proposed
- 1,000ft Disturbance Buffer
- Disturbed Area

- A - IRRIGATION DITCH ± 272 ft SE, ± 433 ft W, ± 272 ft E
- B - EMPIRE INTAKE CANAL ± 762 ft NE
- C - POND ± 523 ft SW, ± 654 ft SW, $\pm 1,235$ ft NE

* All distances measured to reference well: NORTH PLATTE 11-41-33HC

WELL PAD - NORTH PLATTE A-33

HYDROLOGY MAP
NORTH PLATTE A-U-33HC, NORTH PLATTE A-U-33HNB
NORTH PLATTE A11-U41-33HNC, NORTH PLATTE 11-41-33HC
NORTH PLATTE 11-41-33HNB & NORTH PLATTE B11-V41-33HNC
LOCATED IN NW1/4 NW1/4
SECTION 33, T5N, R63W, 6th P.M.
WELD COUNTY, COLORADO



410 17th Street, Suite 1400
Denver, Colorado 80202



CONSULTING, LLC

SHERIDAN OFFICE 2155 North Main Street
Sheridan, Wyoming 82801
Phone 307-674-0609
LOVELAND OFFICE 1635 Foxtail Drive, Suite 204
Loveland, Colorado 80538
Phone 970-776-4331

SCALE: 1" = 1,000ft

NAD83 CO-Nft

DRAWN: JELO

DATE: 8 Nov 2013

REVISED: JELO

DATE: 5 Sept 2014