

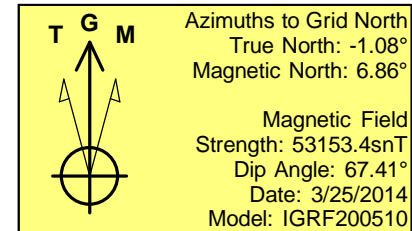
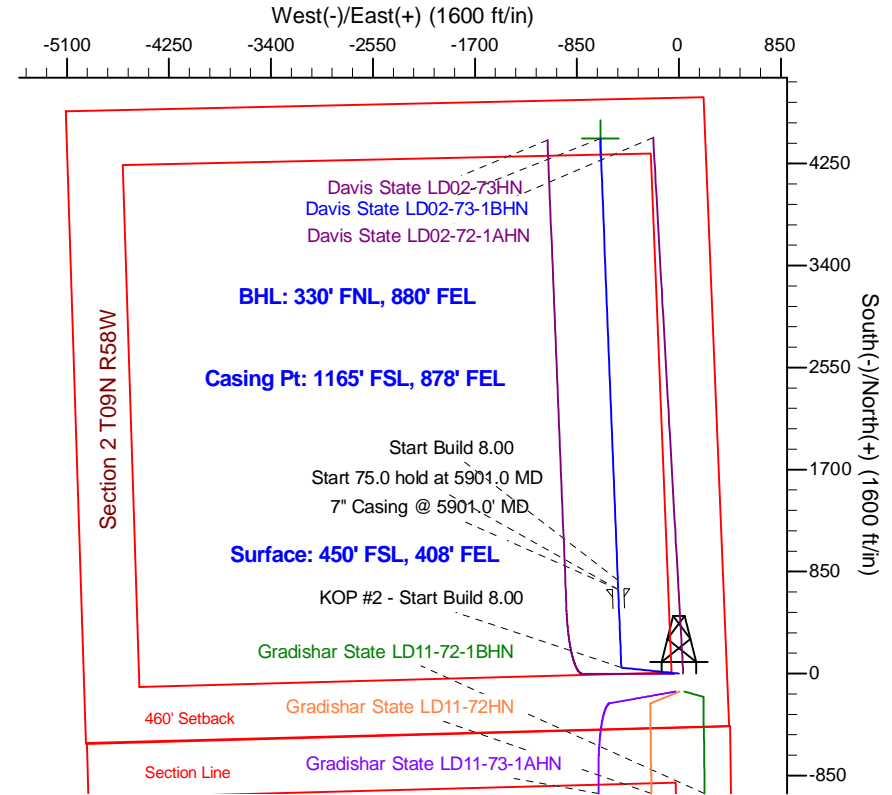
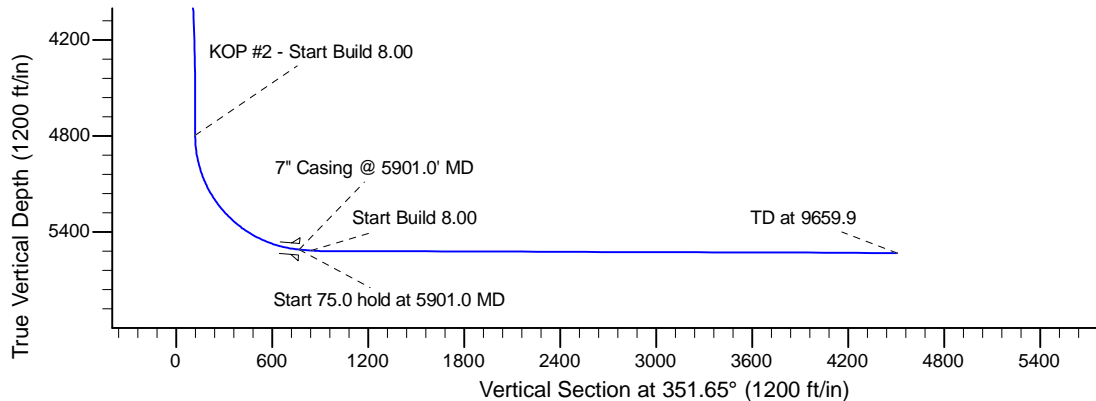
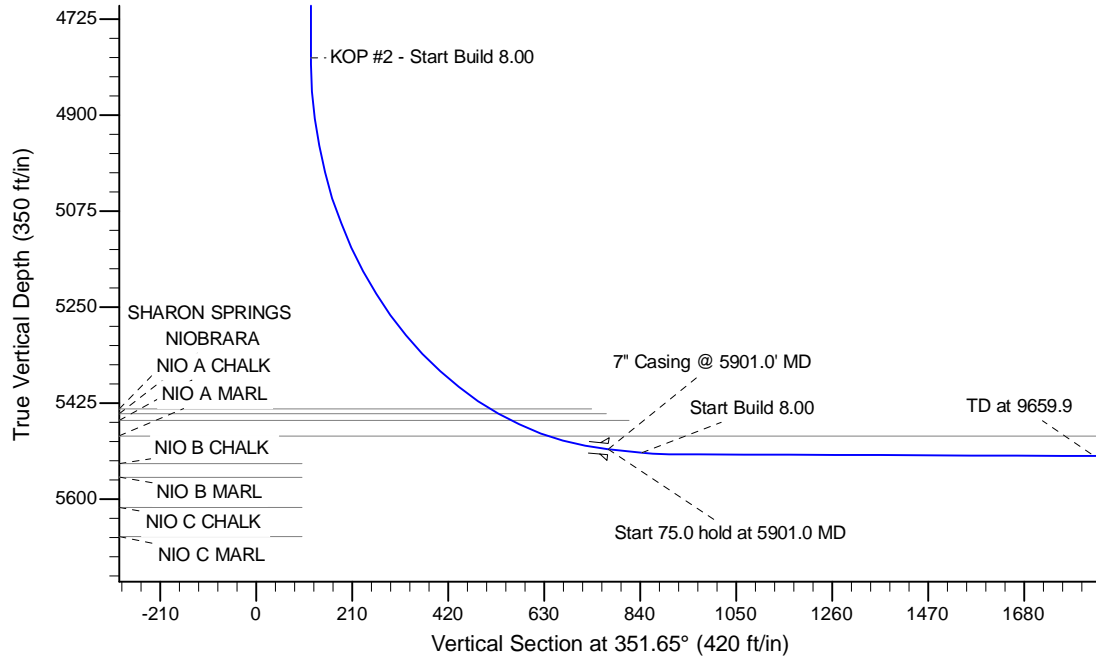
Project: Wattenberg Field
 Site: LD (Sec.2-T09N-R58W) Weld County, CO
 Well: Davis State LD02-73-1BHN
 Wellbore: Original Drilling
 Design: APD - Rev 1

Northern Region Drilling - Working

Geodetic System: US State Plane 1983
 Datum: North American Datum 1983
 Ellipsoid: GRS 1980
 Zone: Colorado Northern Zone
 System Datum: Mean Sea Level

SECTION DETAILS

Sec	MD	Inc	Azi	TVD	+N/-S	+E/-W	Dleg	TFace	VSeet	Target
1	0.0	0.00	0.00	0.0	0.0	0.0	0.00	0.00	0.0	
2	1500.0	0.00	0.00	1500.0	0.0	0.0	0.00	0.00	0.0	
3	2051.2	11.02	275.95	2047.8	5.5	-52.6	2.00	275.95	13.1	
4	4021.9	11.02	275.95	3982.2	44.5	-427.4	0.00	0.00	106.2	
5	4573.2	0.00	0.00	4530.0	50.0	-480.0	2.00	180.00	119.2	
6	4838.5	0.00	0.00	4795.3	50.0	-480.0	0.00	0.00	119.2	
7	5901.0	85.00	357.73	5508.8	703.3	-505.9	8.00	357.73	769.3	
8	5976.0	85.00	357.73	5515.3	777.9	-508.9	0.00	0.00	843.6	
9	6036.0	89.80	357.73	5518.1	837.8	-511.3	8.00	0.00	903.2	
10	9659.9	89.80	357.73	5530.7	4458.8	-654.9	0.00	0.00	4506.7	Davis State LD02-73-1BHN BHL 330'FNL, 880'FEL



WELL DETAILS: Davis State LD02-73-1BHN

Ground Level: 4662.0					
	Northing	Easting	Latitude	Longitude	
0.0	0.0	1529420.20	3464417.32	40.774590	-103.823130

Plan: APD - Rev 1 (Davis State LD02-73-1BHN/Original Drilling)

Created By: Shailey Jewell Date: 15:41, August 20 2014

OK to submit with 2A as per Noble Drilling
 8/21/2014 9:20