

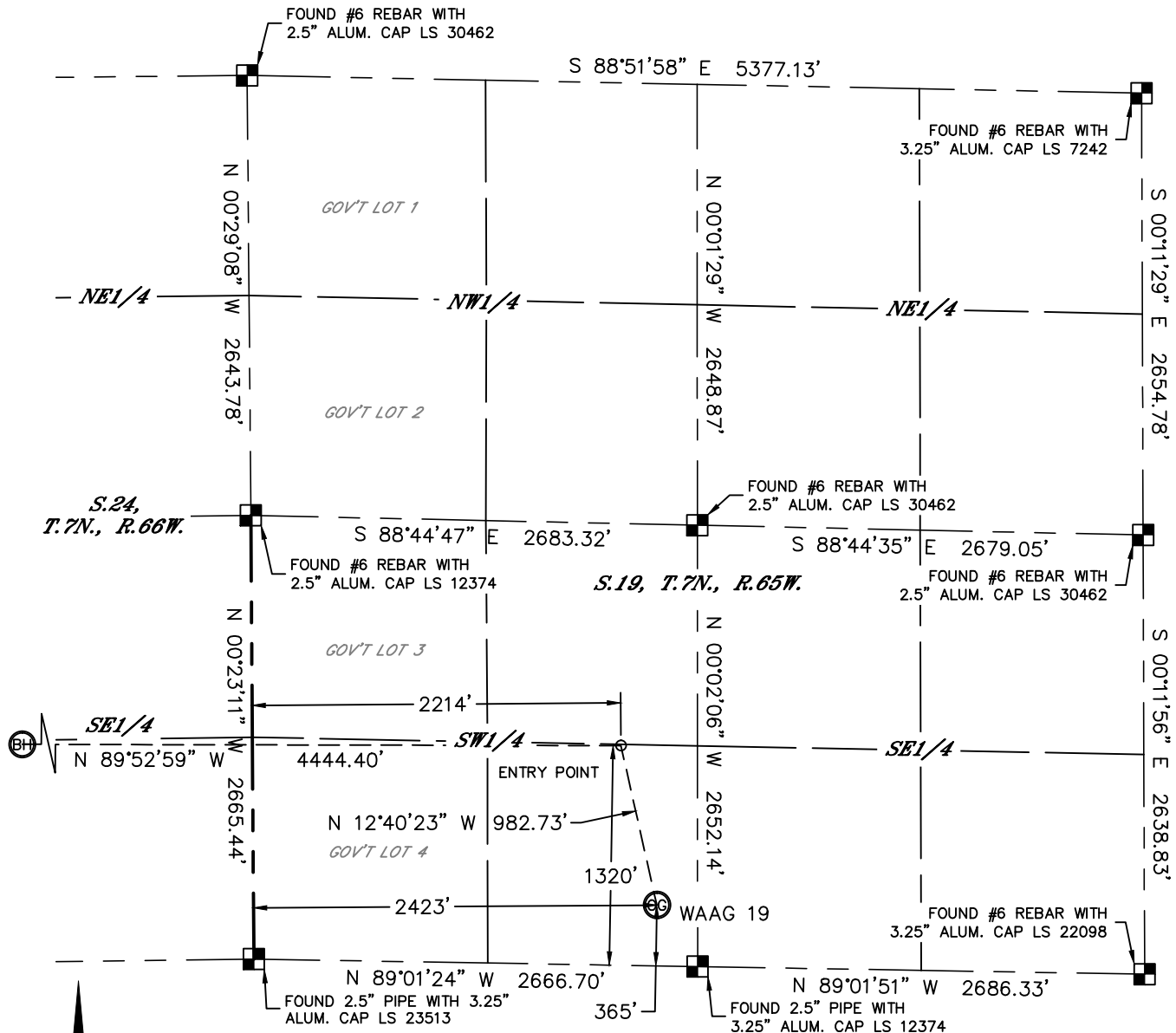


Lat40°, Inc. 1635 Foxtrail Drive, Suite 325 Loveland, CO 970-776-3321

WELL LOCATION CERTIFICATE

THIS MAP DOES NOT REPRESENT A BOUNDARY SURVEY

SECTION: 19
TOWNSHIP: 7N
RANGE: 65W



In accordance with a request from Derek Petrie with EXTRACTION OIL & GAS Lat40°, Inc. has determined the surface location of the WAAG 19 to be 365' from the SOUTH line and 2423' from the WEST line of Section 19, Township 7 North, Range 65 West and the bottom hole to be 1320' from the SOUTH line and 2230' from the EAST line as measured at right angles from the section lines of Section 24, Township 7 North, Range 66 West of the Sixth Principal Meridian, County of Weld, State of Colorado.

I hereby state that this Well Location Certificate was prepared by me, or under my direct supervision, that the fieldwork was completed on 7/2/2014, for and on behalf of EXTRACTION OIL & GAS That this is not a Land Survey Plat or an Improvement Survey Plat, and that it is not to be relied upon for establishment of fence, building, or other future improvement lines.

SURFACE LOCATION

LAT: 40.55447°N
LONG: 104.70715°W
PDOP: 1.8
ELEV: 4868'
1/4,1/4: SESW

BOTTOM HOLE

LAT: 40.55724°N
LONG: 104.72388°W

ENTRY POINT

LAT: 40.55711°N
LONG: 104.70789°W

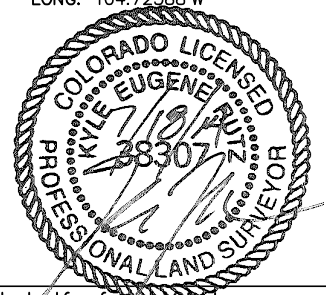
LEGEND

- = ALIQUOT MONUMENT AS DESCRIBED
- = CALCULATED POSITION

SHEET 1 OF 2

Kyle E. Rutz—On behalf of Lat40°, Inc.
Colorado Licensed Professional
Land Surveyor No. 38307

DATE: rev7/15/2014
PROJECT#: 2014064



NOTE:

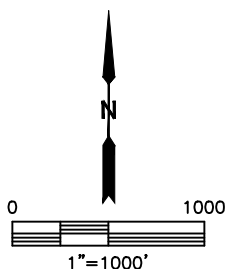
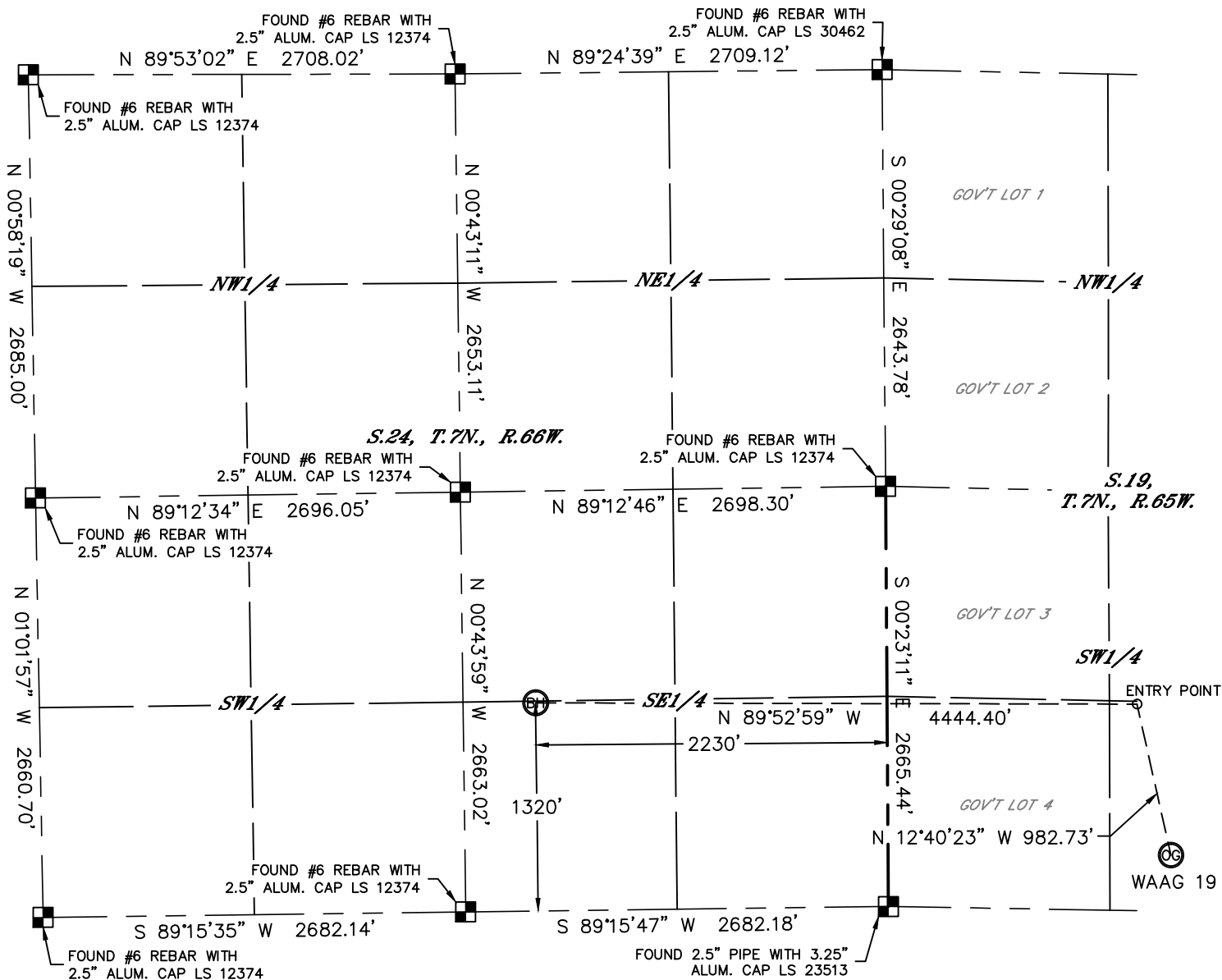
- 1) Bearings shown are Grid Bearings of the Colorado State Plane Coordinate System, North Zone, North American Datum 1983/2007. The lineal dimensions as contained herein are based upon the "U.S. Survey Foot."
- 2) Ground elevations are based on an observed GPS elevation (NAVD 1988 DATUM).
- 3) IMPROVEMENTS: See LOCATION DRAWING for all visible improvements within 500' of disturbed area.
- 4) SURFACE USE: CROP LAND
- 5) INSTRUMENT OPERATOR: ADAM KELLY
- 6) NEAREST CULTURAL ITEMS:
BUILDING: 1756' SE
BUILDING UNIT: 1756' SE
HIGH OCCUPANCY BUILDING UNIT: 5280'+
DESIGNATED OUTSIDE ACTIVITY AREA: 5280'+
PUBLIC ROAD: 356' S (CR 78)
ABOVEGROUND UTILITY: 1480' SW
RAILROAD: ±3786' SW
PROPERTY LINE: 245' E

Lat40°, Inc. 1635 Foxtrail Drive, Suite 325 Loveland, CO 970-776-3321


WELL LOCATION CERTIFICATE

THIS MAP DOES NOT REPRESENT A BOUNDARY SURVEY

SECTION: 19
TOWNSHIP: 7N
RANGE: 65W



LEGEND

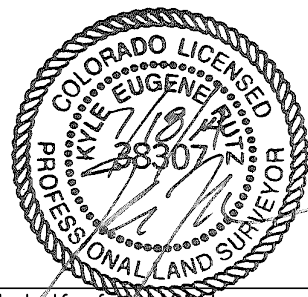
- = ALIQUOT MONUMENT AS DESCRIBED
 = CALCULATED POSITION

SHEET 2 OF 2

Kyle E. Rutz—On behalf of Lat40, Inc.
Colorado Licensed Professional
Land Surveyor No. 38307

DATE:
PROJECT:

DATE: rev7/15/2014
PROJECT#: 2014064



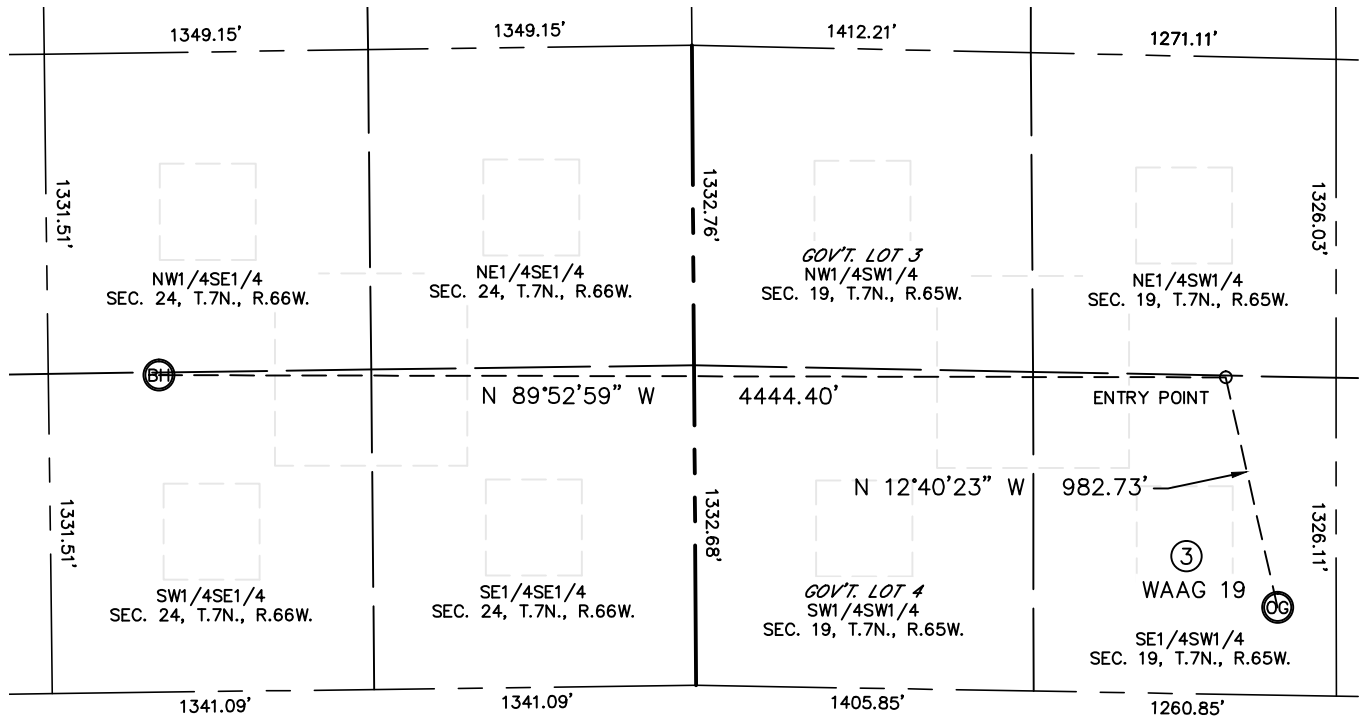


Lat40°, Inc. 1635 Foxtrail Drive, Suite 325 Loveland, CO 970-776-3321

SITE SKETCH

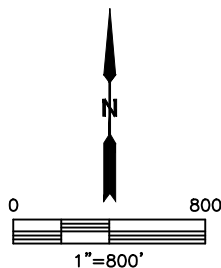
WAAG 19

SECTION: 19
TOWNSHIP: 7N
RANGE: 65W



WELL NO.	WELL NAME	SHL FOOTAGE				SHL LAT°	SHL LONG°	PDOP	ELEV (FT.)	1/4/1/4
3	FARR FARMS 1 (PA)	660	FSL	1980	FWL	40.55534	-104.70871	N/A	4863	SESW

NOTE: THE ABANDONED WELL DATA SHOWN IN RED ABOVE WAS OBTAINED FROM COGCC SCOUT CARDS.



DATE: rev7/15/2014
PROJECT#: 2014064