

Field Ticket Number: 0901564349	Field Ticket Date: Wednesday, August 06, 2014	Planning Order #: NA
Bill To: NOBLE ENERGY INC E-BUSINESS, DONOTMAIL-1001 NOBLE ENERGY WAY, HOUSTON, TX, 77070	Job Name: Annular Fill Order Type: ZOH Well Name: WILKINSON 1-34 Company Code: 1100 Customer PO No.: Na Shipping Point: FORT LUPTON Shipping Point Sales Office: ROCKY MOUNTAINS BD Well Type: VERTICAL GAS Well Category: Development Rig Name/: Lead 718	
Ship To: WILKINSON 1-34, WELD, MILLIKEN, CO, 80543		

Material	Description	QTY	UOM	Unit Amount	Gross Amount	Discount	Net Amount
14099	CMT RECEMENT BOM	1	JOB				
2	MILEAGE FOR CEMENTING CREW Number of Units	120 1	MI				
1	ZI-MILEAGE FROM NEAREST HES BASE,UNIT Number of Units	120 1	MI				
16091	ZI - PUMPING CHARGE FEET/METERS (FT/M) DEPTH	1 6600	EA	7			
114	R/A DENSOMETER W/CHART RECORDER, JOB, ZI NUMBER OF UNITS	1 1	JOB	1			
130104	PORT. DATA ACQUIS. W/OPTICEM RT W/HES DAYS OR PARTIAL DAY (WHOLE NO.)	1 1	EA	2			
3965	HANDLE&DUMP SVC CHRG, CMT&ADDITIVES, ZI NUMBER OF EACH Unit of Measurement	300 1 EA	CF				
	SURCHARGES						
92	PORTABLE RADIOS, ZI NUMBER OF JOBS	4 1	EA				
7	ENVIRONMENTAL CHARGE, JOB, ZI	1	JOB				
8	IRON SAFETY INSPECTION SURCHARGE /JOB ZI	1	JOB				
372867	Cmt PSL - DOT Vehicle Charge, CMT	2	EA				
656520	CMT, S.O.T./S.M.M. Permit	2	EA				
86954	ZI FUEL SURCHG-CARS/PICKUPS <1 1/2 TON Number of Units	120 1	MI				
86955	ZI FUEL SURCHG-HEAVY TRKS >1 1/2 TON Number of Units	120 1	MI				
87605	FUEL SURCHG-CMT & CMT ADDITIVES NUMBER OF TONS	60 18.33	MI				
	CEMENTING MATERIALS						
452986	CMT, HalCem (TM) system	210	SK				
76400	MILEAGE, CMT MTLs DEL/RET MIN NUMBER OF TONS	60 18.33	MI				
3965	HANDLE&DUMP SVC CHRG, CMT&ADDITIVES, ZI Unit of Measurement NUMBER OF EACH	300 EA 1	CF				
100008028	CHEM, SUGAR, GRANULATED, 50LB BAG	50	LB				
Totals				U			

The Road to Excellence Starts with Safety

Sold To #: 345242	Ship To #: 2423853	Quote #:	Sales Order #: 0901564349							
Customer: NOBLE ENERGY INC E-BUSINESS		Customer Rep: RICK SHEETS								
Well Name: WILKINSON	Well #: 1-34	API/UWI #: 05-123-22727-00								
Field: WATTENBERG	City (SAP): MILLIKEN	County/Parish: WELD	State: COLORADO							
Legal Description: SE SW-1-6N-65W-614FSL-2072FWL										
Contractor:		Rig/Platform Name/Num: Lead 718								
Job BOM: 14099										
Well Type: VERTICAL GAS										
Sales Person: HALAMERICA/HB60191		Srv Supervisor: Aaron Smith								
Job										
Formation Name										
Formation Depth (MD)	Top	Bottom								
Form Type		BHST								
Job depth MD	6600ft	Job Depth TVD								
Water Depth		Wk Ht Above Floor								
Perforation Depth (MD)	From	To								
Well Data										
Description	New / Used	Size in	ID in	Weight lbm/ft	Thread	Grade	Top MD ft	Bottom MD ft	Top TVD ft	Bottom TVD ft
Casing		8.625	8.097	24			0	574		
Tubing		2.875	2.586				0	2075		
Casing		4.5	3.826	15.1			0	6600		
Tools and Accessories										
Type	Size in	Qty	Make	Depth ft	Type	Size in	Qty	Make		
Guide Shoe	4.5			6600	Top Plug	4.5		HES		
Float Shoe	4.5				Bottom Plug	4.5		HES		
Float Collar	4.5				SSR plug set	4.5		HES		
Insert Float	4.5				Plug Container	4.5		HES		
Stage Tool	4.5				Centralizers	4.5		HES		
Miscellaneous Materials										
Gelling Agt	Conc		Surfactant	Conc	Acid Type	Qty	Conc			
Treatment Fld	Conc		Inhibitor	Conc	Sand Type	Size	Qty			
Fluid Data										
Stage/Plug #: 1										
Fluid #	Stage Type	Fluid Name	Qty	Qty UoM	Mixing Density lbm/gal	Yield ft ³ /sack	Mix Fluid Gal	Rate bbl/min	Total Mix Fluid Gal	
1	Top Out	HALCEM (TM) SYSTEM	210	sack	15.8	1.15		3	4.98	
5 Gal		FRESH WATER								
Cement Left In Pipe	Amount	ft	Reason		Shoe Joint					
Comment										

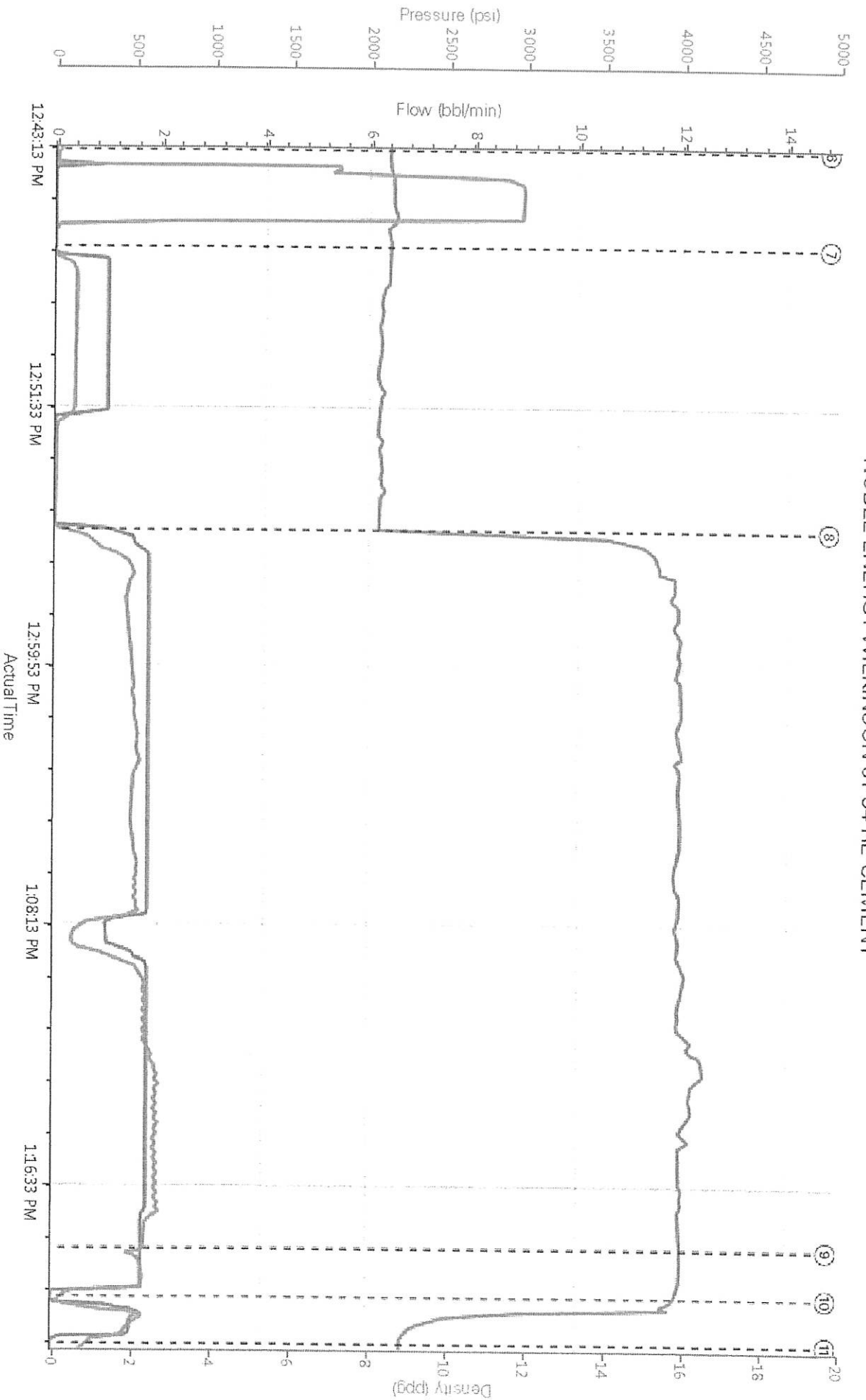
HALLIBURTON

NOBLE ENERGY INC E-BUSINESS
NOBLE ENERGY WILKINSON 01-34 RE-CEMENT
Case 1

1.6 Job Event Log

Type	Seq. No.	Activity	Graph Label	Date	Time	Source	Comb Pump Rate (bbl/min)	DH Density (ppg)	PS Pump Press (psi)	Comment
Event	1	Arrive at Location from Other Job or Site	Arrive at Location from Other Job or Site	8/6/2014	12:15:00	USER				
Event	2	Rig-Up Equipment	Rig-Up Equipment	8/6/2014	12:20:00	USER	0.00	0.00	-16.00	
Event	3	Rig-Up Completed	Rig-Up Completed	8/6/2014	12:30:00	USER	0.00	8.49	-12.00	
Event	4	Pre-Job Safety Meeting	Pre-Job Safety Meeting	8/6/2014	12:35:00	USER	0.00	8.52	-11.00	WITH CUSTOMER REP AND RIG CREW
Event	5	Start Job	Start Job	8/6/2014	12:43:19	COM4	0.00	8.52	28.00	
Event	6	Test Lines	Test Lines	8/6/2014	12:43:25	COM4	0.00	8.51	21.00	@3000 PSI
Event	7	Pump Spacer 1	Pump Spacer 1	8/6/2014	12:46:32	COM4	0.00	8.50	-6.00	5 BBLS FRESH WATER
Event	8	Pump Cement	Pump Cement	8/6/2014	12:55:37	COM4	1.30	11.64	125.00	43 BBLS, 210 SKS @ 15.8 PPG, 1.15 YIELD, 5.0 GAL/SK
Event	9	Cement Returns to Surface	Cement Returns to Surface	8/6/2014	13:18:40	USER	1.60	15.97	585.00	@38 BBLS CEMENT, 5 BBLS TO SURFACE
Event	10	Pump Displacement	Pump Displacement	8/6/2014	13:20:12	COM4	0.00	15.78	34.00	1.5 BBLS FRESH WATER
Event	11	End Job	End Job	8/6/2014	13:21:42	COM4	0.00	8.90	199.00	
Event	12	Pre-Rig Down Safety Meeting	Pre-Rig Down Safety Meeting	8/6/2014	13:26:30	USER	0.00	0.17	-2.00	
Event	13	Rig-Down Equipment	Rig-Down Equipment	8/6/2014	13:35:00	USER				
Event	14	Rig-Down Completed	Rig-Down Completed	8/6/2014	13:45:00	USER				
Event	15	Depart Location for Service Center or Other Site	Depart Location for Service Center or Other Site	8/6/2014	14:00:00	USER				

NOBLE ENERGY WILKINSON 01-34 RE-CEMENT



- ① Arrive at Location from Other Job or Site n/a n/a
- ② Rig-Up Equipment 0.0-16
- ③ Rig-Up Completed 0.8-49-12
- ④ Pre-Job Safety Meeting 0.8-52-11
- ⑤ Start Job 0.8-52-28
- ⑥ Test Lines 0.8-51-21
- ⑦ Pump Spacer 1.0-3-5-6
- ⑧ Pump Cement 1.3-11-64-125
- ⑨ Cement Returns to Surface 1.6-15-97-585
- ⑩ Pump Displacement 0.15-78-34
- ⑪ E
- ⑫ F