

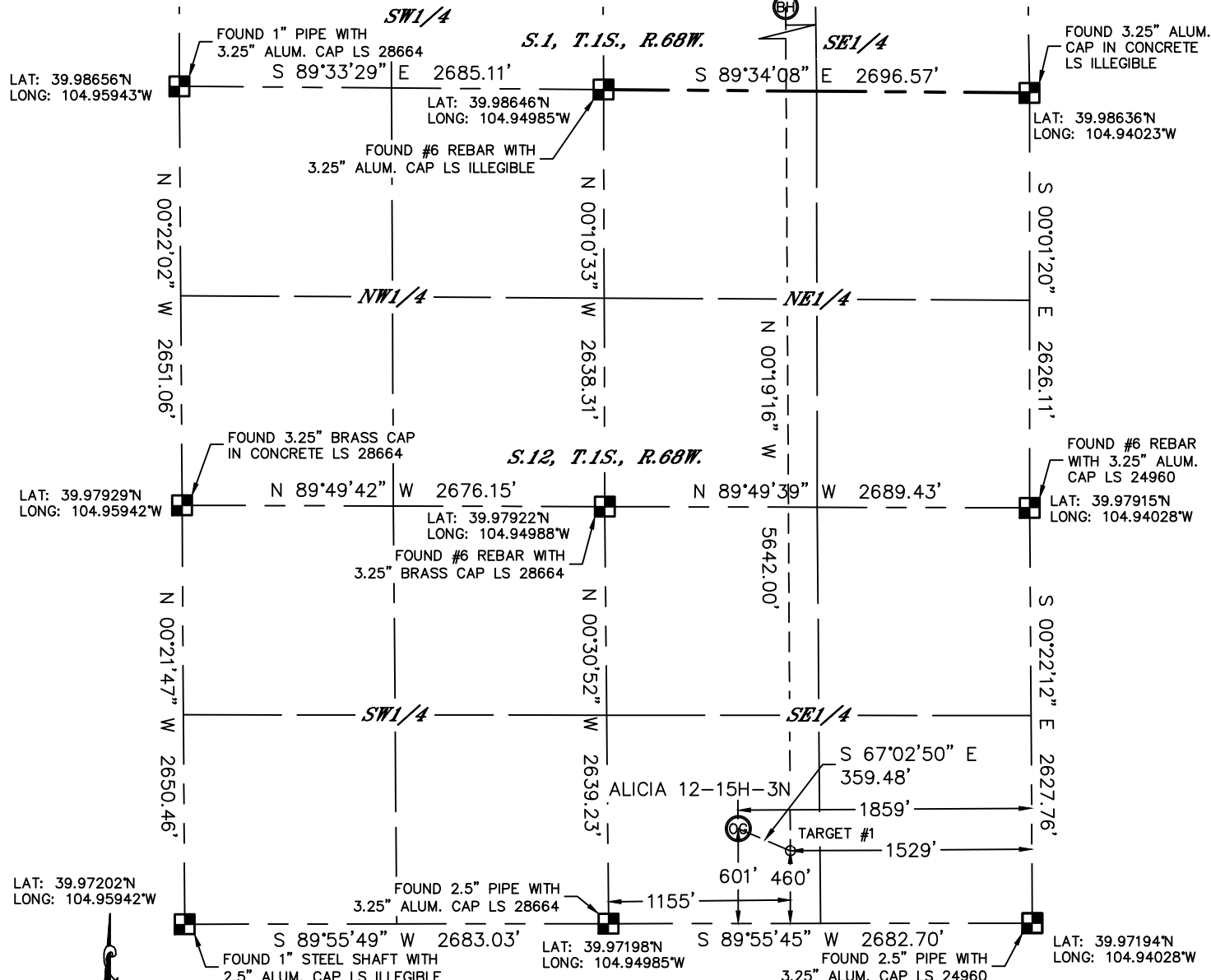


Lat40°, Inc. 1635 Foxtrail Drive, Suite 325 Loveland, CO 970-776-3321

# WELL LOCATION CERTIFICATE

THIS MAP DOES NOT REPRESENT A BOUNDARY SURVEY

SECTION: 12  
TOWNSHIP: 1S  
RANGE: 68W



In accordance with a request from Clay Duke with MENDELL FINISTERRE II, LLC Lat40°, Inc. has determined the surface location of the ALICIA 12-15H-3N to be 601' from the SOUTH line and 1859' from the EAST line as measured at right angles from the section lines of Section 12, Township 1 South, Range 68 West and the bottom hole to be 835' from the SOUTH line and 1533' from the EAST line as measured at right angles from the section lines of Section 1, Township 1 South, Range 68 West of the Sixth Principal Meridian, County of Adams, State of Colorado.

I hereby state that this Well Location Certificate was prepared by me, or under my direct supervision, that the fieldwork was completed on 8/7/2014, for and on behalf of MENDELL FINISTERRE II, LLC. That this is not a Land Survey Plat or an Improvement Survey Plat, and that it is not to be relied upon for establishment of fence, building, or other future improvement lines.

#### SURFACE LOCATION

LAT: 39.97362°N  
LONG: 104.94691°W  
PDOP: 1.9  
ELEV: 5150'  
1/4, 1/4: SW1/4SE1/4

#### BOTTOM HOLE

LAT: 39.98871°N  
LONG: 104.94572°W

#### TARGET #1

LAT: 39.97323°N  
LONG: 104.94573°W

#### LEGEND

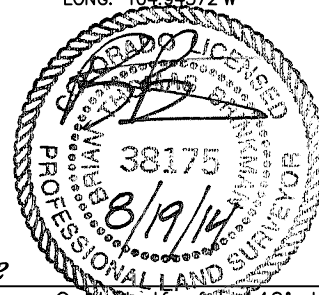
- = ALIQUOT MONUMENT AS DESCRIBED
- = CALCULATED POSITION

#### SHEET 1 OF 2

Brian T. Brinkman—On behalf of Lat40°, Inc.

Colorado Licensed Professional  
Land Surveyor No. 38175

DATE: 8/18/2014  
PROJECT#: 2013026



#### NOTE:

- 1) Bearings shown are Grid Bearings of the Colorado State Plane Coordinate System, North Zone, North American Datum 1983/2007. The lineal dimensions as contained herein are based upon the "U.S. Survey Foot."
  - 2) Ground elevations are based on an observed GPS elevation (NAVD 1988 DATUM).
  - 3) IMPROVEMENTS: See LOCATION DRAWING for all visible improvements within 400' of disturbed area.
  - 4) SURFACE USE: EX. WELL LOCATION
  - 5) INSTRUMENT OPERATOR: BRIAN ROTTINGHAUS
- NEAREST CULTURAL ITEMS:  
BUILDING: ±652' NE  
BUILDING UNIT: ±671' SE  
HIGH OCCUPANCY BUILDING UNIT: ±1978' SW  
DESIGNATED OUTSIDE ACTIVITY AREA: 5280'+  
PUBLIC ROAD: ±619' S (MADISON CT.)  
ABOVEGROUND UTILITY: ±1146' SE  
RAILROAD: ±286' NW  
PROPERTY LINE: ±211' NW

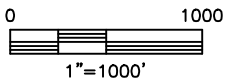
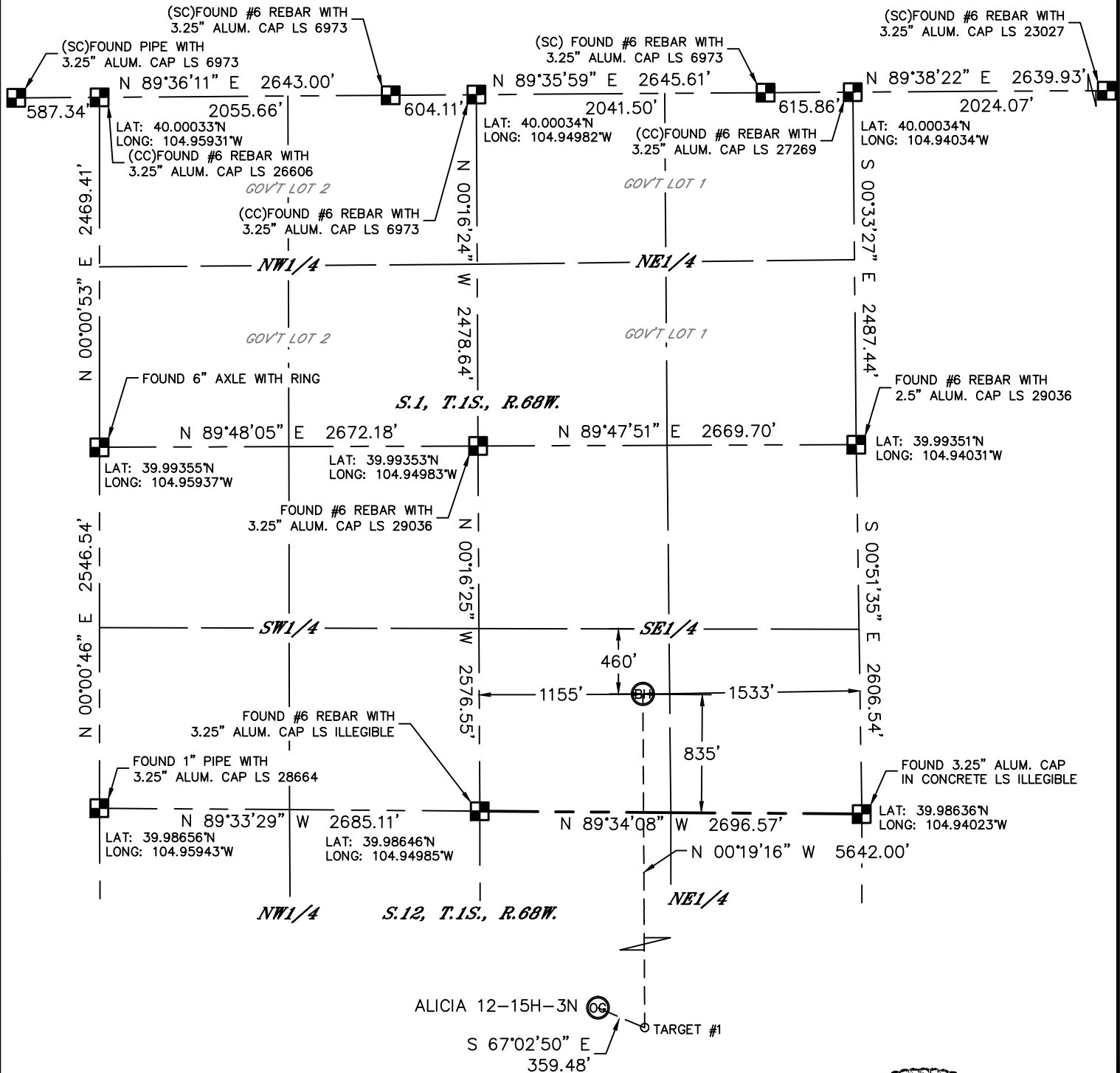


Lat40°, Inc. 1635 Foxtrail Drive, Suite 325 Loveland, CO 970-776-3321

# WELL LOCATION CERTIFICATE

THIS MAP DOES NOT REPRESENT A BOUNDARY SURVEY

SECTION: 12  
TOWNSHIP: 1S  
RANGE: 68W

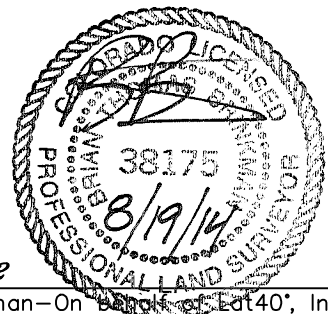


## LEGEND

- = ALIQUOT MONUMENT AS DESCRIBED
- = CALCULATED POSITION

## SHEET 2 OF 2

Brian T. Brinkman—On behalf of Lat40°, Inc.  
Colorado Licensed Professional  
Land Surveyor No. 38175  
DATE: 8/18/2014  
PROJECT#: 2013026



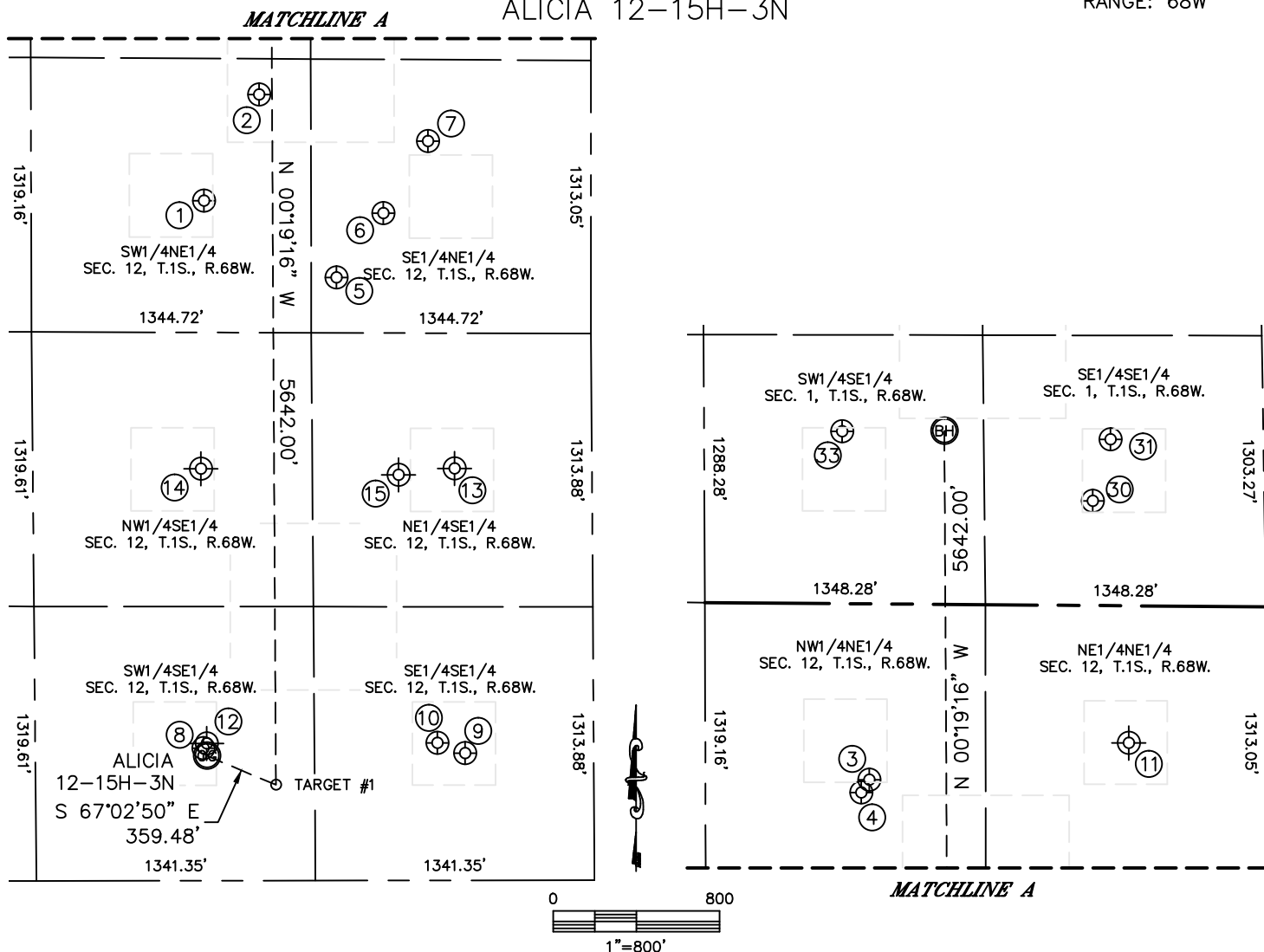


Lat40°, Inc. 1635 Foxtrail Drive, Suite 325 Loveland, CO 970-776-3321

# SITE SKETCH

ALICIA 12-15H-3N

SECTION: 12  
TOWNSHIP: 1S  
RANGE: 68W



WELL NO.	WELL NAME	SHL FOOTAGE				SHL LAT°	SHL LONG°	PDOP	ELEV (FT.)	1/4/1/4
1	CROFF 12-5	2002	FNL	1861	FEL	39.98094	-104.94691	2.2	5082	SWNE
2	LENART S-1	1489	FNL	1596	FEL	39.98233	-104.94595	3.7	5083	SWNE
3	TUDEX REINHOLT NC4	846	FNL	1907	FEL	39.98411	-104.94705	3.6	5074	NWNE
4	REINHOLT 12-6	908	FNL	1945	FEL	39.98394	-104.94719	1.6	5076	NWNE
5	TUDEX BRINK S-2	2366	FNL	1223	FEL	39.97991	-104.94464	2.9	5125	SENE
6	ELMS 12-4	2054	FNL	998	FEL	39.98076	-104.94383	2.1	5116	SENE
7	ELMS 2	1706	FNL	783	FEL	39.98171	-104.94306	2.0	5115	SENE
8	RUBY 2	637	FSL	1876	FEL	39.97371	-104.94697	1.7	5150	SWSE
9	PULIS 12-8	611	FSL	618	FEL	39.97363	-104.94249	2.1	5154	SESE
10	BARLOW UNIT 12-16B	661	FSL	751	FEL	39.97377	-104.94296	2.0	5151	SESE
11	SEVENS 1	660	FNL	660	FEL	39.98461	-104.94250	NA	5082	NENE
12	MALLO 1	660	FSL	1860	FEL	39.97379	-104.94683	NA	5144	SWSE
13	DARLOW 12-2	1980	FSL	660	FEL	39.97740	-104.94351	NA	5152	NESE
14	BELLIGER 12-7	1980	FSL	1880	FEL	39.97742	-104.94687	NA	5115	NWSE
15	BARKER 12-9	1950	FSL	930	FEL	39.97732	-104.94352	NA	5144	NESE
30	MORRISON 16-1	503	FSL	824	FEL	39.98777	-104.94318	1.4	5073	SESE
31	MORRISON INVESTMENT CO 2	799	FSL	735	FEL	39.98858	-104.94287	1.5	5074	SESE
33	MORRISON 15-1	828	FSL	2024	FEL	39.98871	-104.94748	1.9	5069	SWSE

NOTE: THE ABANDONED WELL DATA SHOWN IN RED ABOVE WAS OBTAINED FROM COGCC SCOUT CARDS.

DATE: 8/18/2014  
PROJECT#: 2013026