



Kerr-McGee Oil & Gas Onshore LP

A subsidiary of Anadarko Petroleum Corporation

1099 18th Street
Denver, CO 80202
720-929-6000

August 27, 2014

Department of Natural Resources
Oil and Gas Conservation Commission
The Chancery Building
1120 Lincoln St., Suite 801
Denver, CO 80203

Re: **30 Day Certification Letter - 318A.e**
COBRA 4N-14HZ
Township 2 North, Range 67 West, Section 23: NW/4SW/4
Unit Spacing: 02N-67W-Sec 11 SW/4SW/4
02N-67W-Sec 14 W/2W/2
02N-67W-Sec 23 NW/4NW/4
Weld County, Colorado

Ladies/Gentlemen:

Kerr McGee Oil and Gas Onshore LP ("KMG") hereby certifies to the Director that KMG owns one-hundred percent (100%) of the mineral rights in the proposed spacing unit. Therefore, KMG respectfully requests the Director to approve the boundary well.

If you have any questions or issues regarding this permit, please contact Cheryl Light at (720) 929-6461.

Very truly yours,

KERR-McGEE OIL AND GAS ONSHORE LP

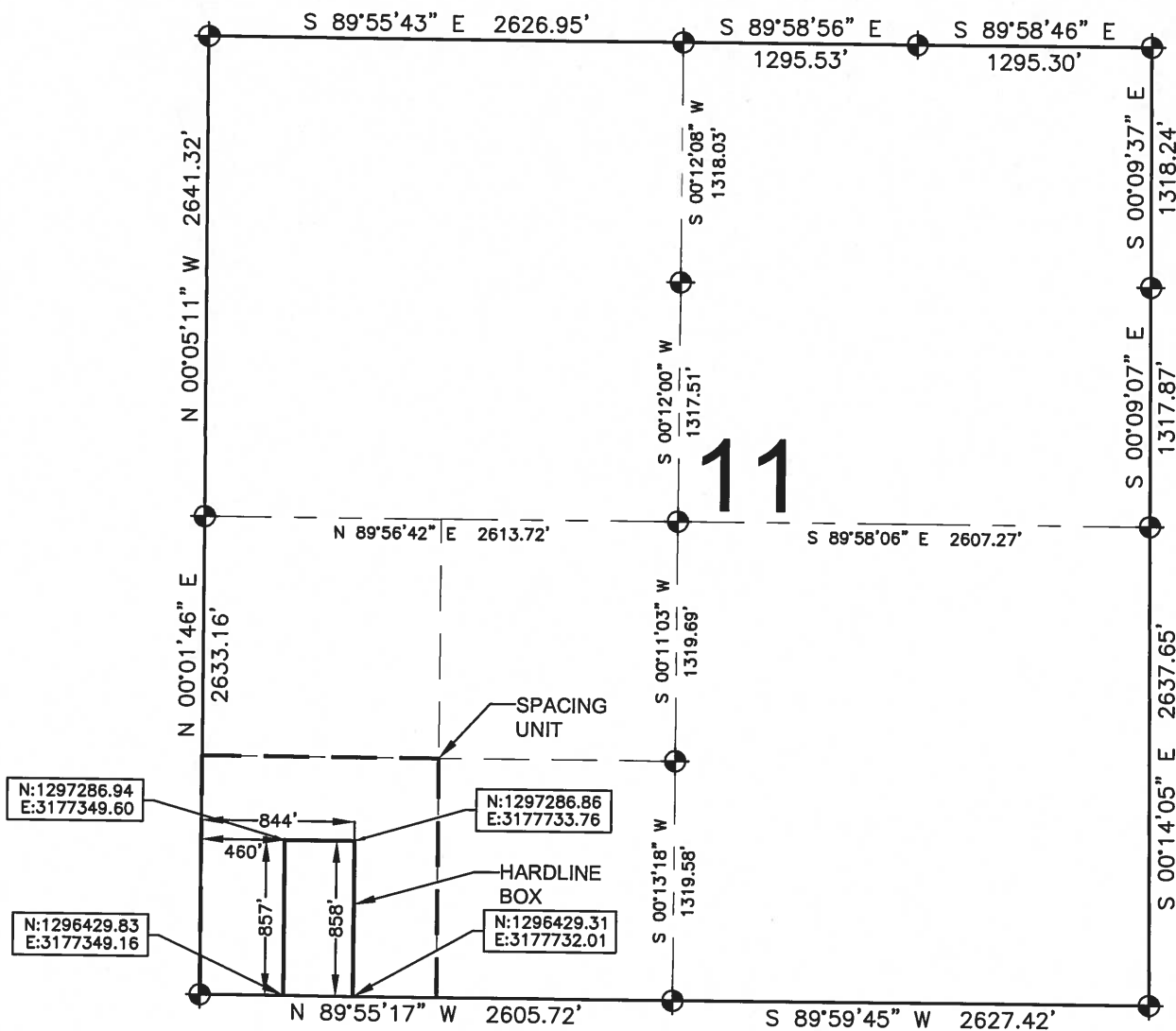
A handwritten signature in blue ink that reads 'RPowers'.

Ronett Powers
Regulatory Analyst II

Enclosure

HARDLINE EXHIBIT: COBRA 4N-14HZ

SECTION 11, TOWNSHIP 2 NORTH, RANGE 67 WEST, 6TH P.M.



LEGEND

- = EXISTING MONUMENT ♦ = BOTTOM HOLE
● = PROPOSED HEEL BH = BOTTOM HOLE

HEEL LOCATION

NAD83
LATITUDE= 40.131011°
LONGITUDE= 104.864813°

LATITUDE= 40°07'51.640"
LONGITUDE= 104°51'53.327"

BOTTOM HOLE LOCATION

NAD83
LATITUDE= 40.145209°
LONGITUDE= 104.864671°

LATITUDE= 40°08'42.753"
LONGITUDE= 104°51'52.814"

QRT/QRT SECTIONS WITHIN PATH OF THE HARDLINE

SWSW, SEC. 11

AVAILABLE FOOTAGE

6987'

NOTES:

- THIS DOCUMENT IS NOT A LAND SURVEY PLAT OR IMPROVEMENT SURVEY PLAT. THIS DOCUMENT DOES NOT REFLECT A FIELD SURVEY. SECTION BREAKDOWN, MONUMENTATION AND HORIZONTAL POSITIONS SHOWN ARE BASED ON THE HEEL LOCATION PROVIDED BY ANADARKO PETROLEUM CORPORATION

PREPARED BY:



DRAWING DATE: 03-22-14
BY: DRF
CHECKED: JAH
HEEL LOCATION: SW 1/4 SW 1/4, SEC. 14, T2N, R67W, 6TH P.M. WELD COUNTY, COLORADO

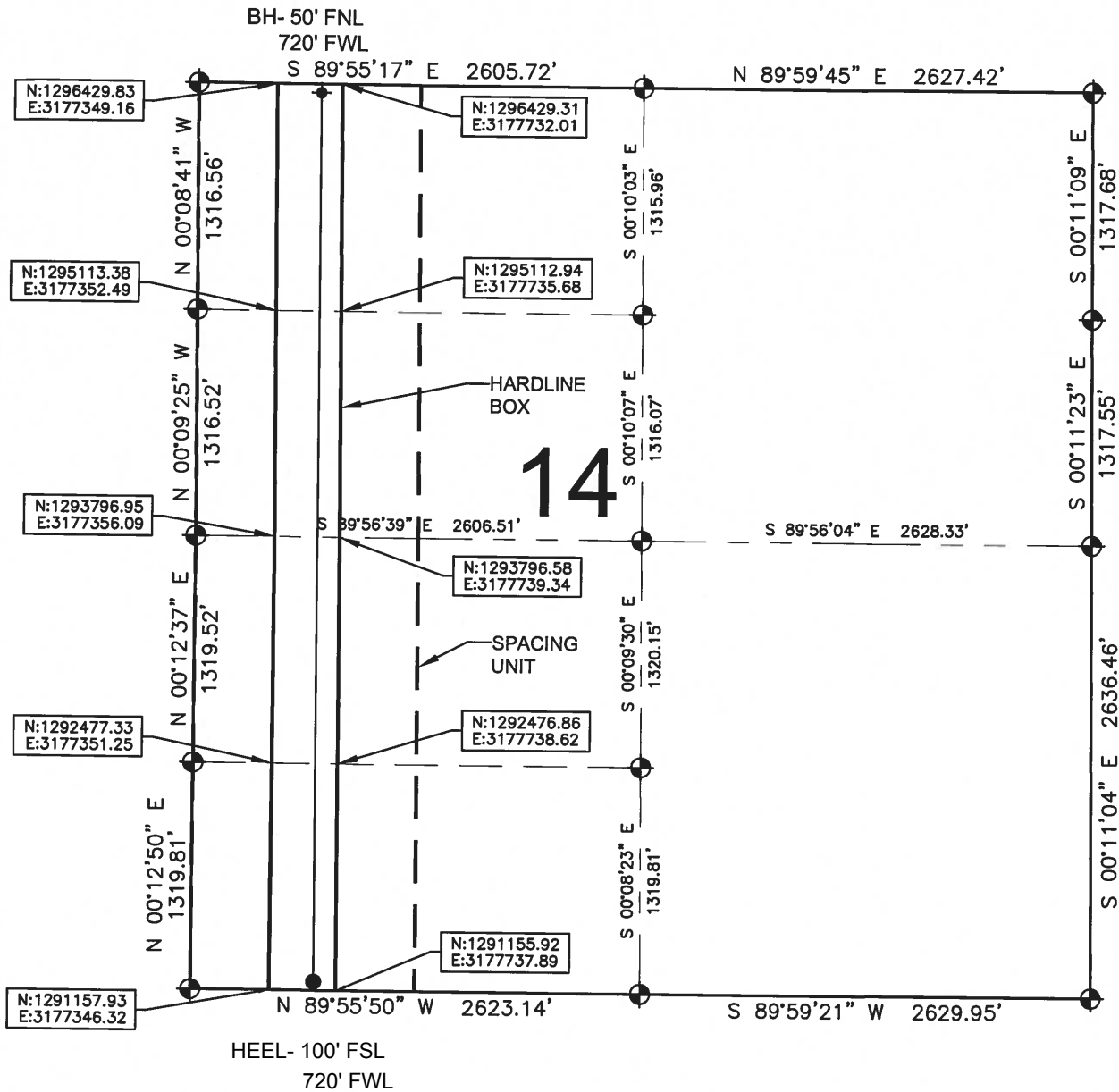
SHEET 1 OF 3



0 500 1000
SCALE: 1"=1000'

HARDLINE EXHIBIT: COBRA 4N-14HZ

SECTION 14, TOWNSHIP 2 NORTH, RANGE 67 WEST, 6TH P.M.



LEGEND

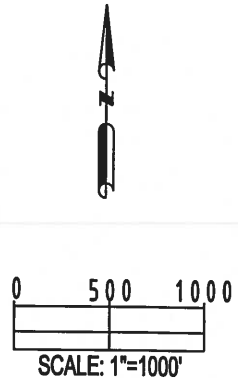
- = EXISTING MONUMENT ● = BOTTOM HOLE
● = PROPOSED HEEL BH = BOTTOM HOLE

QRT/QRT SECTIONS WITHIN PATH OF THE HARDLINE

- NWNW, SEC. 14 SWNW, SEC. 14
NWSW, SEC. 14 SWSW SEC. 14

NOTES:

1. THIS DOCUMENT IS NOT A LAND SURVEY PLAT OR IMPROVEMENT SURVEY PLAT. THIS DOCUMENT DOES NOT REFLECT A FIELD SURVEY. SECTION BREAKDOWN, MONUMENTATION AND HORIZONTAL POSITIONS SHOWN ARE BASED ON THE HEEL LOCATION PROVIDED BY ANADARKO PETROLEUM CORPORATION



PREPARED BY:

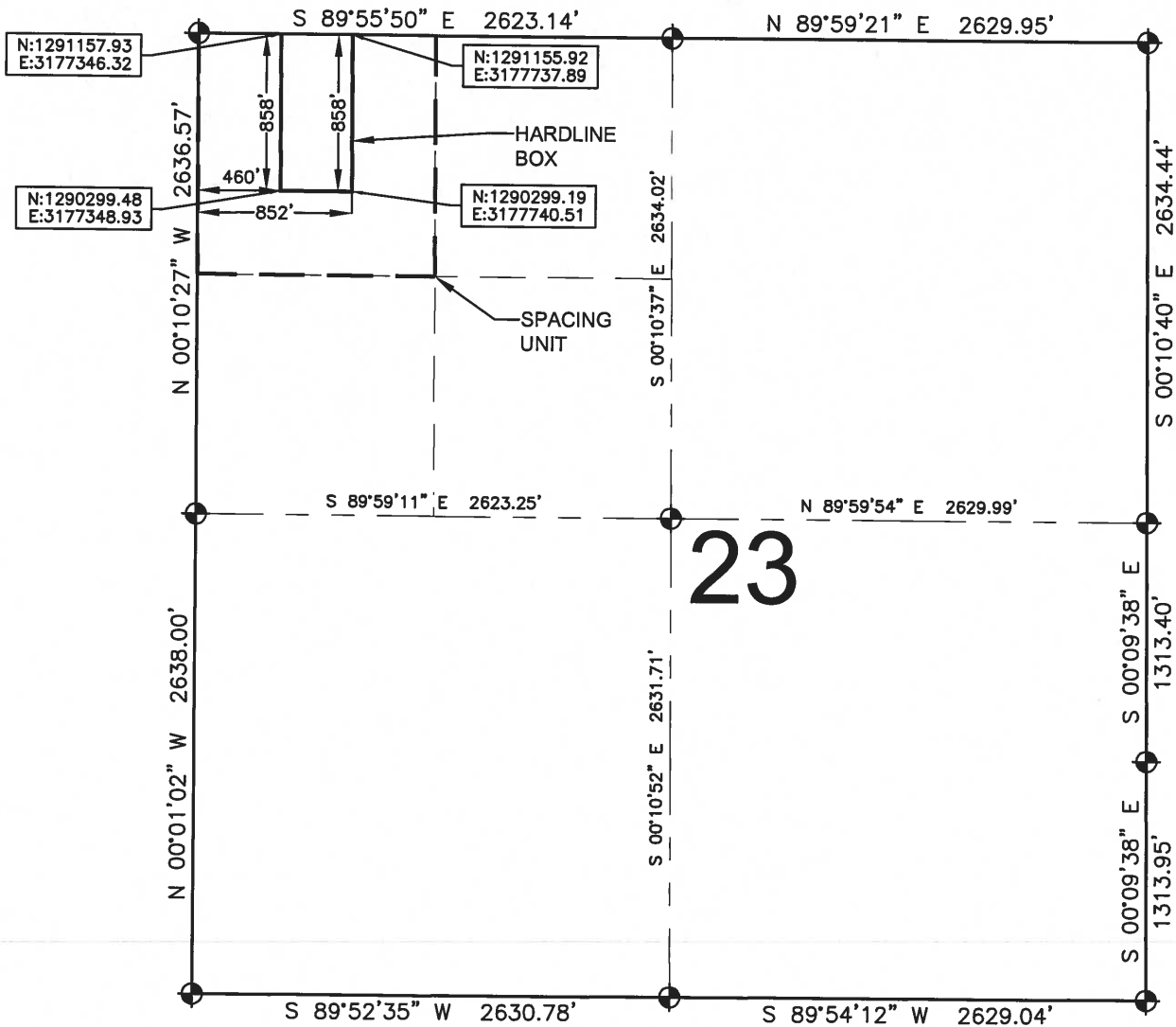


DRAWING DATE: 03-22-14
BY: DRF
CHECKED: JAH
HEEL LOCATION: SW 1/4 SW 1/4, SEC. 14, T2N, R67W, 6TH P.M. WELD COUNTY, COLORADO

SHEET 2 OF 3

HARDLINE EXHIBIT: COBRA 4N-14HZ

SECTION 23, TOWNSHIP 2 NORTH, RANGE 67 WEST, 6TH P.M.



LEGEND

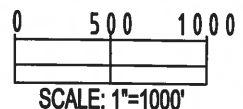
- ⊕ = EXISTING MONUMENT
- ⊕ = BOTTOM HOLE
- = PROPOSED HEEL
- BH = BOTTOM HOLE

QRT/QRT SECTIONS WITHIN PATH OF THE HARDLINE

NWNW, SEC. 23

NOTES:

- THIS DOCUMENT IS NOT A LAND SURVEY PLAT OR IMPROVEMENT SURVEY PLAT. THIS DOCUMENT DOES NOT REFLECT A FIELD SURVEY. SECTION BREAKDOWN, MONUMENTATION AND HORIZONTAL POSITIONS SHOWN ARE BASED ON THE HEEL LOCATION PROVIDED BY ANADARKO PETROLEUM CORPORATION



PREPARED BY:



SHEET 3 OF 3

DRAWING DATE: 03-22-14	HEEL LOCATION: SW 1/4 SW 1/4, SEC. 14, T2N, R67W, 6TH P.M. WELD COUNTY, COLORADO
BY: DRF	CHECKED: JAH