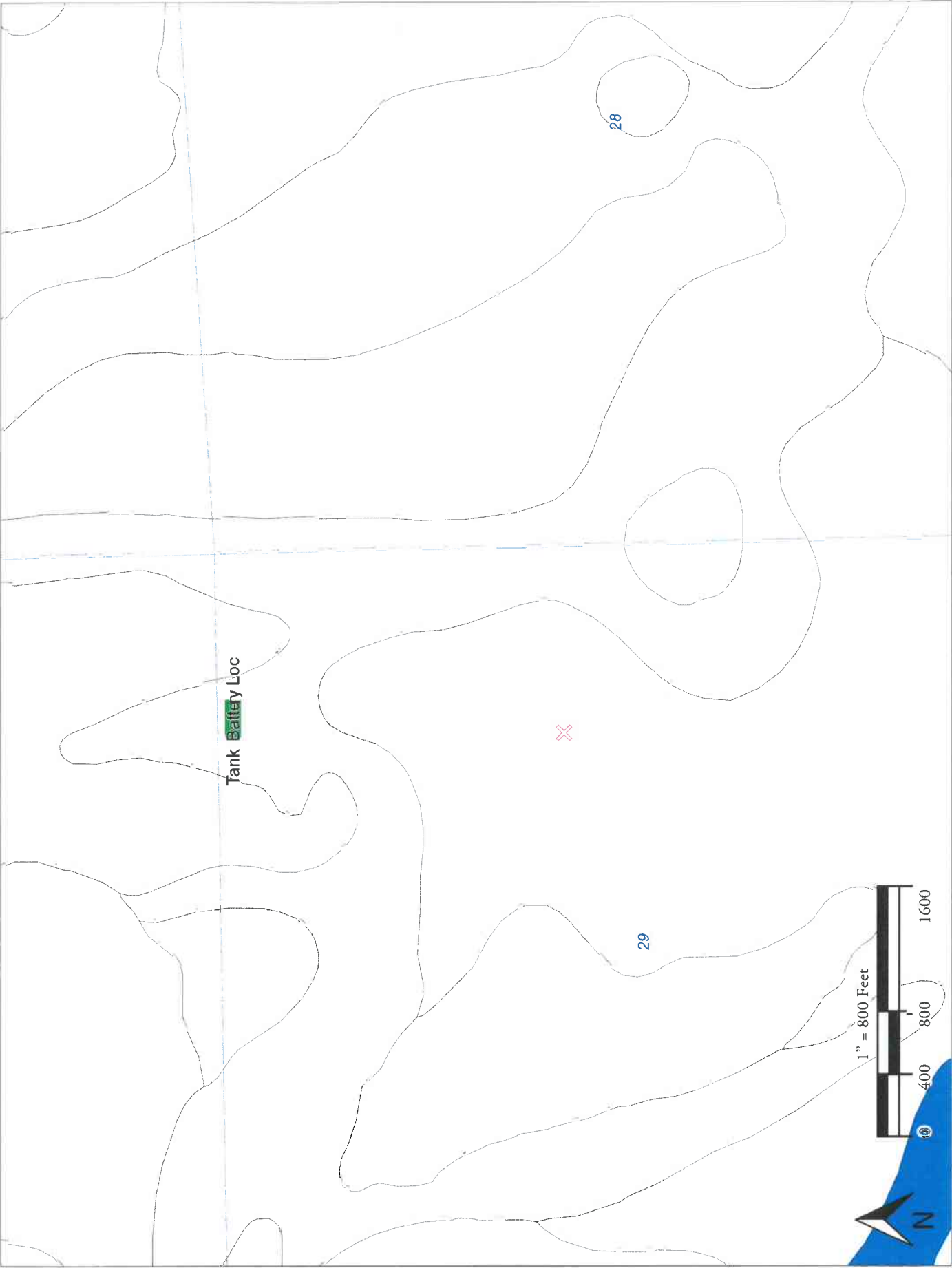


Soil map units well loc & Tk Bat Loc



Washington County, Colorado

78—Weld silt loam

Map Unit Setting

National map unit symbol: 35wx
Elevation: 4,200 to 5,900 feet
Mean annual precipitation: 12 to 17 inches
Mean annual air temperature: 48 to 52 degrees F
Frost-free period: 135 to 155 days
Farmland classification: Prime farmland if irrigated

Map Unit Composition

Weld and similar soils: 90 percent
Minor components: 10 percent
Estimates are based on observations, descriptions, and transects of the mapunit.

Description of Weld

Setting

Landform: Plains
Down-slope shape: Linear
Across-slope shape: Linear
Parent material: Loess

Typical profile

H1 - 0 to 5 inches: silt loam
H2 - 5 to 15 inches: silty clay
H3 - 15 to 19 inches: silty clay loam
H4 - 19 to 60 inches: loam

Properties and qualities

Slope: 0 to 2 percent
Depth to restrictive feature: More than 80 inches
Natural drainage class: Well drained
Runoff class: Low
Capacity of the most limiting layer to transmit water (Ksat):
Moderately low to moderately high (0.06 to 0.20 in/hr)
Depth to water table: More than 80 inches
Frequency of flooding: None
Frequency of ponding: None
Calcium carbonate, maximum in profile: 15 percent
Available water storage in profile: High (about 10.4 inches)

Interpretive groups

Land capability classification (irrigated): 2e
Land capability classification (nonirrigated): 3e
Hydrologic Soil Group: C
Ecological site: Loamy plains (R067BY002CO)

Minor Components

Platner

Percent of map unit: 4 percent

Colby

Percent of map unit: 3 percent

Rago

Percent of map unit: 3 percent

Data Source Information

Soil Survey Area: Washington County, Colorado

Survey Area Data: Version 14, Dec 23, 2013

Washington County, Colorado

47—Norka-Colby loams, 3 to 5 percent slopes

Map Unit Setting

National map unit symbol: 35vt

Elevation: 3,800 to 5,500 feet

Mean annual precipitation: 12 to 17 inches

Mean annual air temperature: 48 to 52 degrees F

Frost-free period: 135 to 155 days

Farmland classification: Not prime farmland

Map Unit Composition

Norka and similar soils: 60 percent

Colby and similar soils: 35 percent

Minor components: 5 percent

Estimates are based on observations, descriptions, and transects of the mapunit.

Description of Norka

Setting

Landform: Plains

Down-slope shape: Linear

Across-slope shape: Linear

Parent material: Calcareous silty loess

Typical profile

H1 - 0 to 4 inches: loam

H2 - 4 to 13 inches: silt loam

H3 - 13 to 60 inches: silt loam

Properties and qualities

Slope: 3 to 5 percent

Depth to restrictive feature: More than 80 inches

Natural drainage class: Well drained

Runoff class: Low

Capacity of the most limiting layer to transmit water (Ksat):

Moderately high to high (0.20 to 2.00 in/hr)

Depth to water table: More than 80 inches

Frequency of flooding: None

Frequency of ponding: None

Calcium carbonate, maximum in profile: 15 percent

Available water storage in profile: High (about 10.7 inches)

Interpretive groups

Land capability classification (irrigated): 3e

Land capability classification (nonirrigated): 3c

Hydrologic Soil Group: B

Ecological site: Loamy plains (R067BY002CO)

Description of Colby

Setting

Landform: Plains

Down-slope shape: Linear

Across-slope shape: Linear

Parent material: Loess

Typical profile

H1 - 0 to 8 inches: loam

H2 - 8 to 60 inches: silt loam

Properties and qualities

Slope: 3 to 5 percent

Depth to restrictive feature: More than 80 inches

Natural drainage class: Well drained

Runoff class: Low

Capacity of the most limiting layer to transmit water (Ksat):

Moderately high to high (0.57 to 2.00 in/hr)

Depth to water table: More than 80 inches

Frequency of flooding: None

Frequency of ponding: None

Calcium carbonate, maximum in profile: 15 percent

Available water storage in profile: High (about 10.6 inches)

Interpretive groups

Land capability classification (irrigated): 3e

Land capability classification (nonirrigated): 4e

Hydrologic Soil Group: B

Ecological site: Loamy plains (R067BY002CO)

Minor Components

Weld

Percent of map unit: 3 percent

Ulysses

Percent of map unit: 2 percent

Data Source Information

Soil Survey Area: Washington County, Colorado

Survey Area Data: Version 14, Dec 23, 2013