

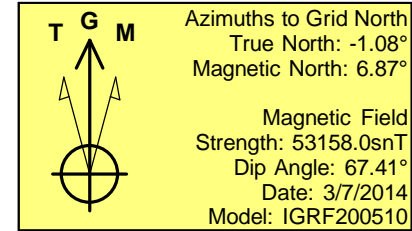
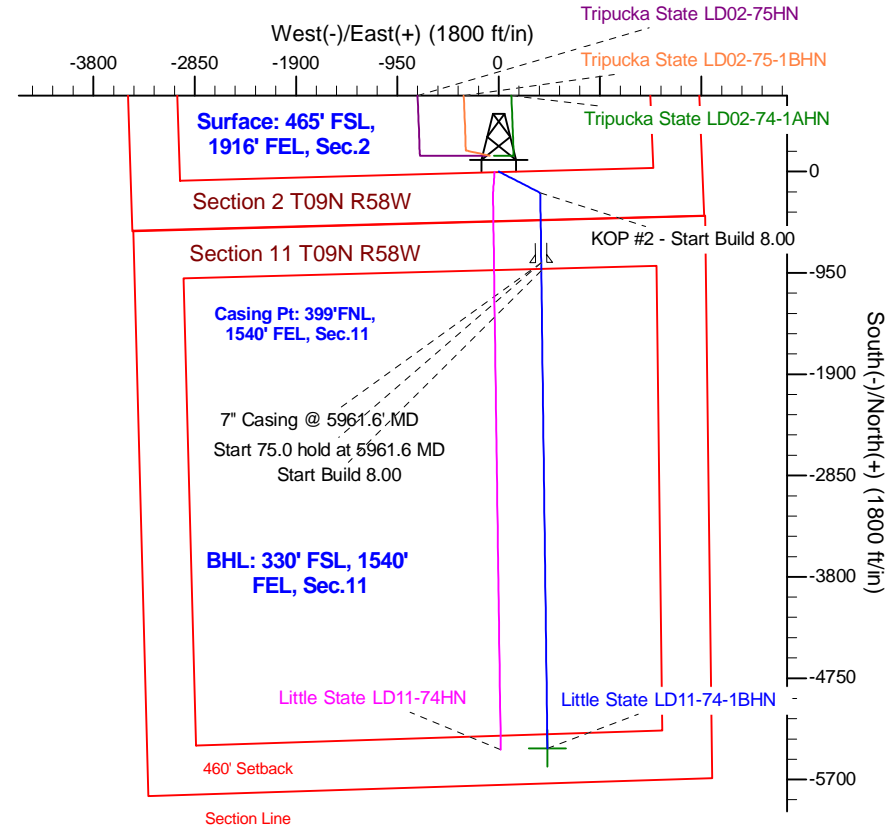
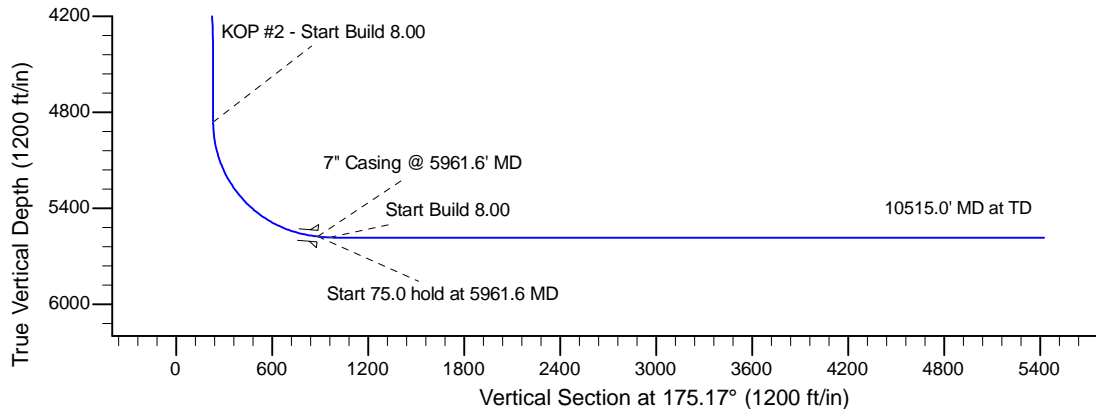
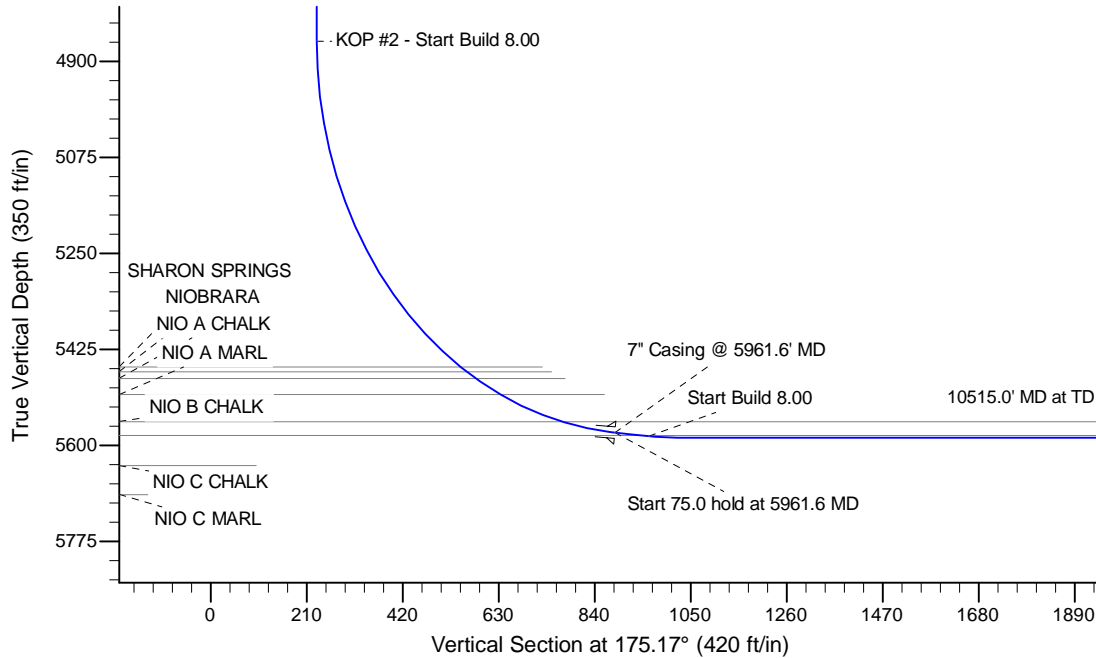
Project: Wattenberg Field  
Site: LD (Sec.2-T09N-R58W) Weld County, CO  
Well: Little State LD11-74-1BHN  
Wellbore: Original Drilling  
Design: APD - Rev 1

# Northern Region Drilling - Working

Geodetic System: US State Plane 1983  
Datum: North American Datum 1983  
Ellipsoid: GRS 1980  
Zone: Colorado Northern Zone  
System Datum: Mean Sea Level

## SECTION DETAILS

Sec	MD	Inc	Azi	TVD	+N/-S	+E/-W	Dleg	TFace	VSec	Target
1	0.0	0.00	0.00	0.0	0.0	0.0	0.00	0.00	0.0	
2	1500.0	0.00	0.00	1500.0	0.0	0.0	0.00	0.00	0.0	
3	2000.5	10.01	117.15	1997.9	-19.9	38.8	2.00	117.15	23.1	
4	4020.3	10.01	117.15	3987.1	-180.1	351.2	0.00	0.00	209.0	
5	4520.8	0.00	0.00	4485.0	-200.0	390.0	2.00	180.00	232.1	
6	4899.1	0.00	0.00	4863.3	-200.0	390.0	0.00	0.00	232.1	
7	5961.6	85.00	179.27	5576.7	-853.7	398.4	8.00	179.27	884.2	
8	6036.6	85.00	179.27	5583.3	-928.4	399.3	0.00	0.00	958.7	
9	6099.1	90.00	179.27	5586.0	-990.8	400.1	8.00	0.00	1021.0	
10	10515.0	90.00	179.27	5586.0	-5406.4	456.6	0.00	0.00	5425.6	Little State LD11-74-1BHN BHL 330'FSL, 1540'FEL



## WELL DETAILS: Little State LD11-74-1BHN

Ground Level: 4676.0		Latitude		Longitude	
0.0	0.0	1529395.39	3462910.79	40.774600	-103.828570

Plan: APD - Rev 1 (Little State LD11-74-1BHN/Original Drilling)

Created By: Shailey Jewell Date: 15:44, August 26 2014

Checked: \_\_\_\_\_ Date: \_\_\_\_\_

Reviewed: \_\_\_\_\_ Date: \_\_\_\_\_

Approved: \_\_\_\_\_ Date: \_\_\_\_\_