

COLUMBINE LOGGING

Scale: 5" / 100'
Measured Depth Log

Well Name CHANDLER STATE D15-72-1HN

Location Sec. 15 T3N R64W

State COLORADO

County WELD

Country USA

Rig Number PRECISIN 829

API Number #05-123-38322

AFE # 136990

Region DJ BASIN

Field WATTENBERG

Spud Date 4/17/2014

Drilling Completed 4/25/2014

Surface Coordinates 40.231830, -104.529090
300' FNL X 350' FEL

Ground Elevation 4786'

K.B. Elevation 4802'

Logged Interval 700' To 6090'

Total Depth 6090'

Formation NIOBRARA C Marl

Type of Drilling Fl... LSND

Operator

Company Noble Energy Inc.

Geologist

Name Holly Duncan

Company Noble Energy Inc.

Other

Jeremy Loftness

Senior Wellsite Geologist

Jason Beach

Wellsite Geologist

Rock Types

UNKNOWN	COAL	MARLSTONE	SHALY SANDSTONE
ANHYDRITE	CONGLOMERATE	METAMORPHIC	SHALY SILTSTONE
BENTONITE	DOLOMITE	NO SAMPLE	SILTSTONE
BRECCIA	DOLOMITIC LIMESTONE	SALT	SILTY SHALE
CEMENT	GRANITE	SALT- PEPPER SAND	TILL
CHALK	GYP SUM	SANDSTONE	TUFF
CHERT	IGNEOUS	SHALE	WELDED TUFF
CLAY CHOKE SAND	LIMESTONE	SHALE COLORED	
CLAYSTONE	SIDERITE or LIMONITE	SHALE GRAY	

Accessories

Fossils

ALGAE
AMPHIPORA
BELEMNITE
BIOCLASTIC
BRACHIOPOD
BRYOZOA
CEPHALOPOD
CORAL
CRINOID
ECHINOID

FISH

FORAMINIFERA

FOSSIL

GASTROPOD

INOCERAMUS

OOLITE

OSTRACOD

PELECYPOD

PELLET

PISOLITE

PLANT REMAINS

PLANT SPORES

SCAPHOPOD

STROMATOPOROID

Minerals

ANHYDRITIC

ARGILLACEOUS

ARGILLITE GRAIN

BENTONITE

BITUMENOUS SUBSTANCE

BRECCIA FRAGMENTS

CALCAREOUS

CARBONACEOUS FLAKES

CHTDK

CHTLT

COAL - THIN BEDS

DOLOMITIC

FELDSPAR

FERRUGINOUS PELLET

FERRUGINOUS

GLAUCONITE

GYP SIFEROUS

HEAVY MINERAL

KAOLIN

MARLSTONE

MICACEOUS

MINERAL CRYSTALS

NODULES

PHOSPHATE PELLETS

PYRITE

SALT CAST

SANDY

SILICEOUS

SILTY

TUFFACEOUS

ANHYDRITE STRINGER

BENTONITE STRINGER

COAL STRINGER

DOLOMITE STRINGER

GYP SUM STRINGER

LIMESTONE STRINGER

MARLSTONE (CALC) STRG

MARLSTONE (DOL) STRG

SANDSTONE STRINGER

SHALE STRINGER

SILTSTONE STRINGER

Stringer

Other Symbols

Oil Show

DEAD

EVEN

QUESTIONABLE

SPOTTED STAINING

Porosity

E EARTHY

FENESTRAL

FRACTURE

INTERCRYSTALLINE

INTERLOLITIC

MOLDIC

ORGANIC

P PINPOINT

VUGGY

Engineering

BIT CHANGE

CONNECTION (LEFT)

CONNECTION (RIGHT)

CONNECTION GAS

TRIP GAS

DOWN TIME GAS

CORE - LOST

CORE - RECOVERED

DST INTERVAL

FAULT

FORMATION TOP

GAS SHOW

OIL SHOW

MN DEPTH

MN DEPTH (RIGHT)

NORMAL FAULT

OVERTURNED STRATA

REVERSE FAULT

CASING

SIDEWALL CORE (LEFT)

SIDEWALL CORE (RIGHT)

SLIDE

SURVEY

DRILL STEM TEST

WIRELINE TESTED - LEFT

WIRELINE TESTED - RT

Rounding

ANGULAR

ROUNDED

SUBANG

SUBRND

Textures

BOUNDSTONE

CHALKY

CRYPTOXLN

E EARTHY

FINELYXLN

GRAINSTONE

L LITHOGRAPHIC

MX MICROXLN

MS MUDSTONE

PS PACKSTONE

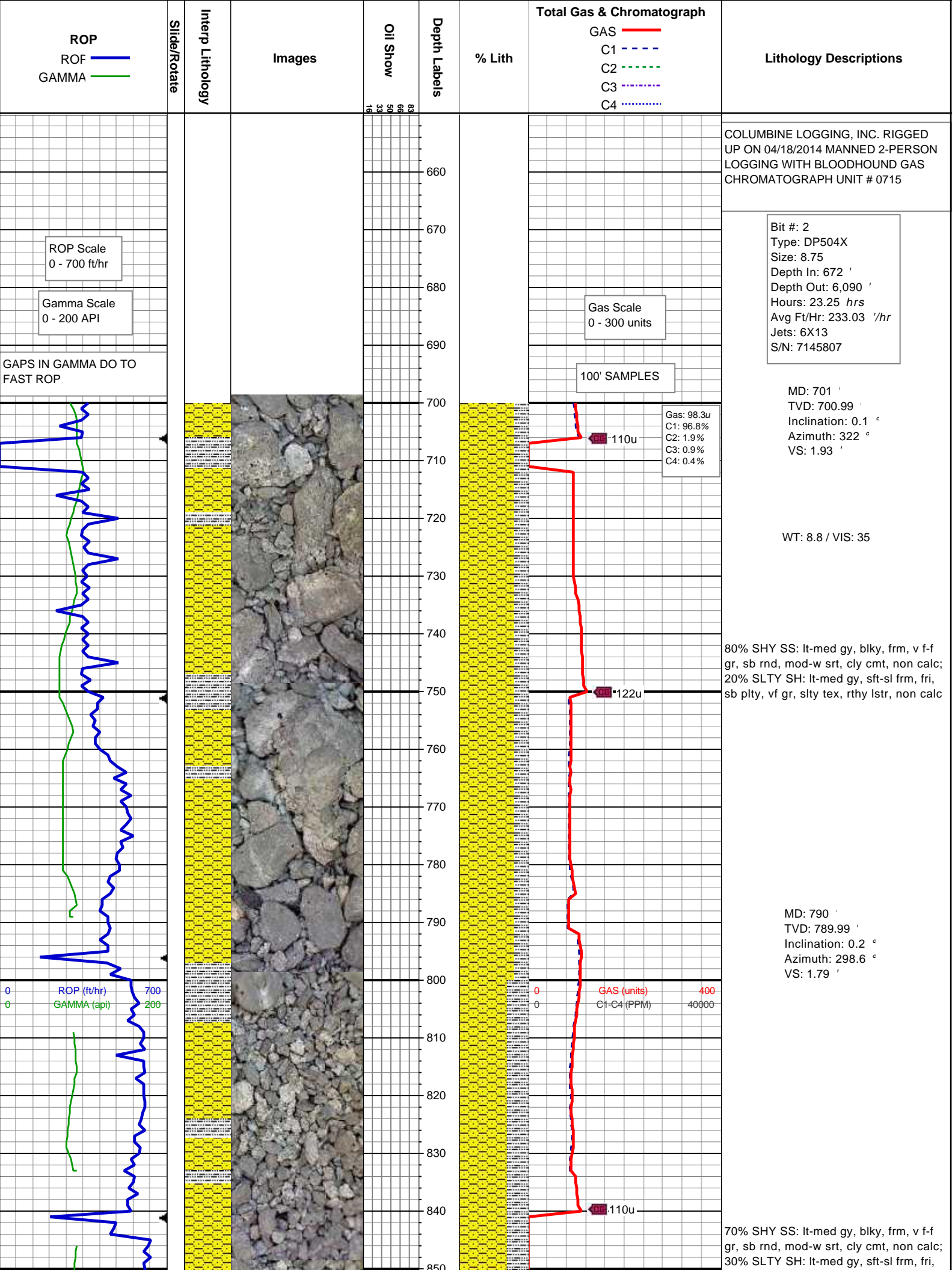
WS WACKESTONE

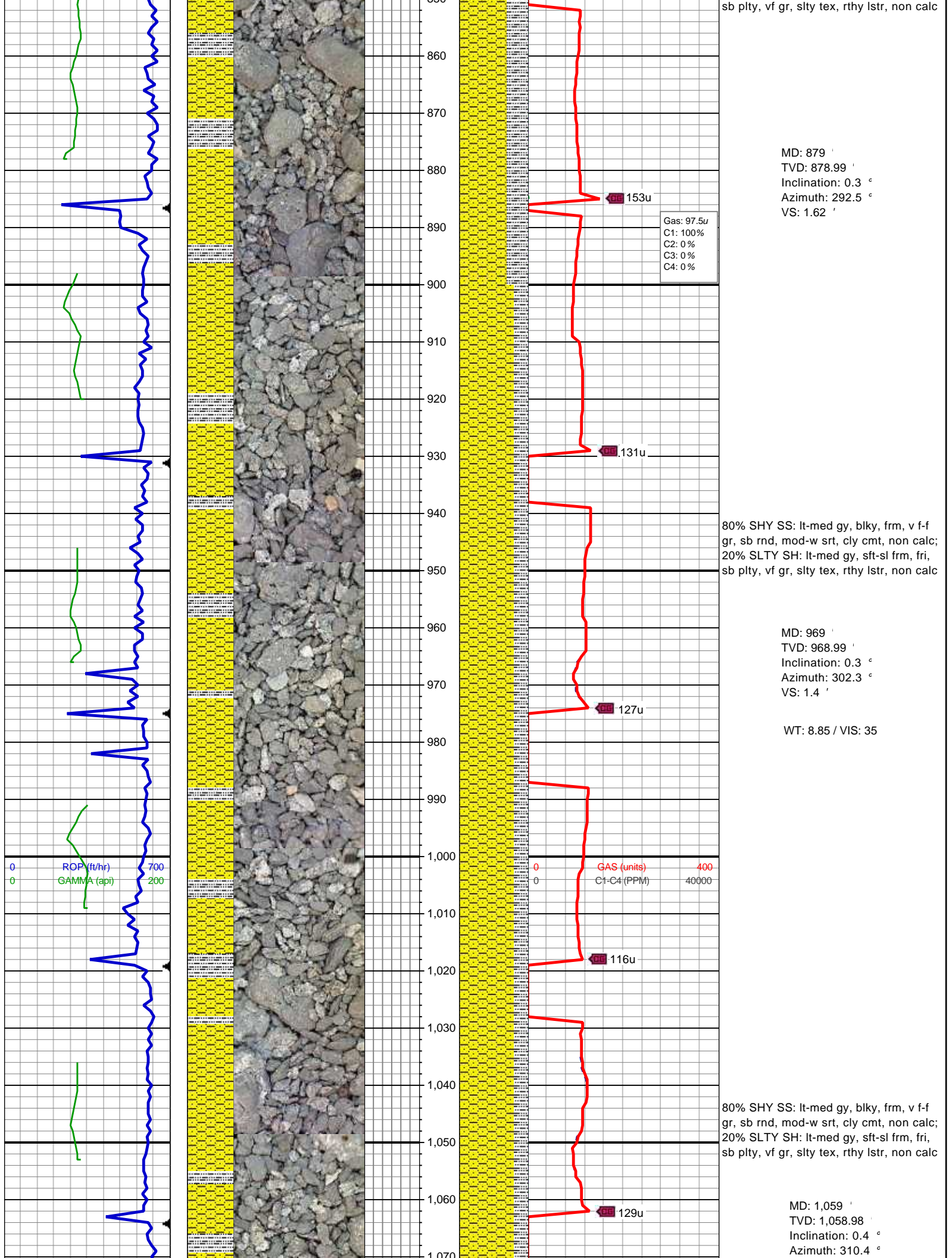
Sorting

M1 MODERATE

P POOR

W WELL





MD: 879 '
TVD: 878.99 '
Inclination: 0.3 °
Azimuth: 292.5 °
VS: 1.62 '

Gas: 97.5u
C1: 100%
C2: 0%
C3: 0%
C4: 0%

80% SHY SS: lt-med gy, blk, frm, v f-f
gr, sb rnd, mod-w srt, cly cmt, non calc;
20% SLTY SH: lt-med gy, sft-sl frm, fri,
sb plty, vf gr, slty tex, rthy lstr, non calc

MD: 969 '
TVD: 968.99 '
Inclination: 0.3 °
Azimuth: 302.3 °
VS: 1.4 '

WT: 8.85 / VIS: 35

80% SHY SS: lt-med gy, blk, frm, v f-f
gr, sb rnd, mod-w srt, cly cmt, non calc;
20% SLTY SH: lt-med gy, sft-sl frm, fri,
sb plty, vf gr, slty tex, rthy lstr, non calc

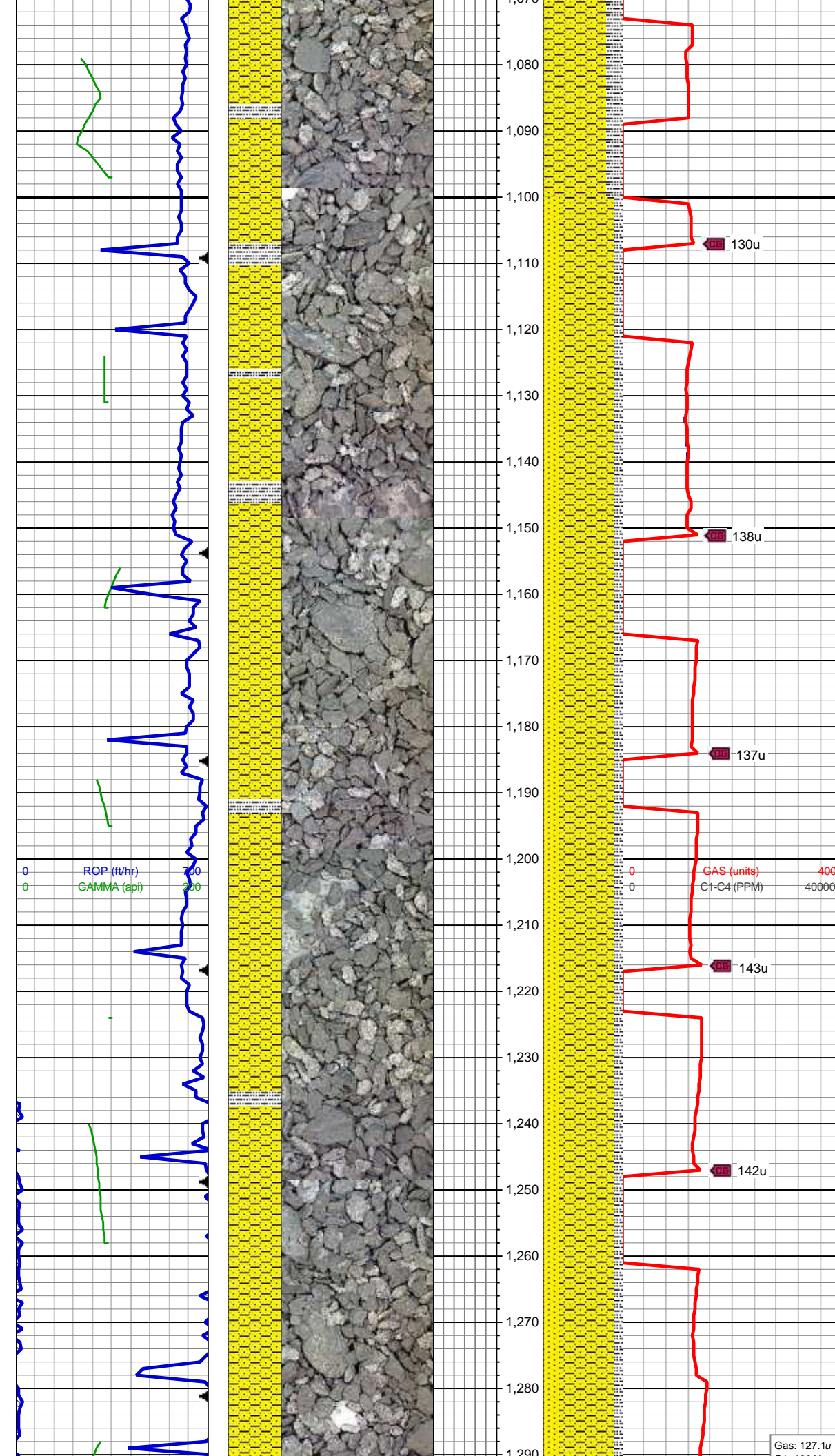
MD: 1,059 '
TVD: 1,058.98 '
Inclination: 0.4 °
Azimuth: 310.4 °

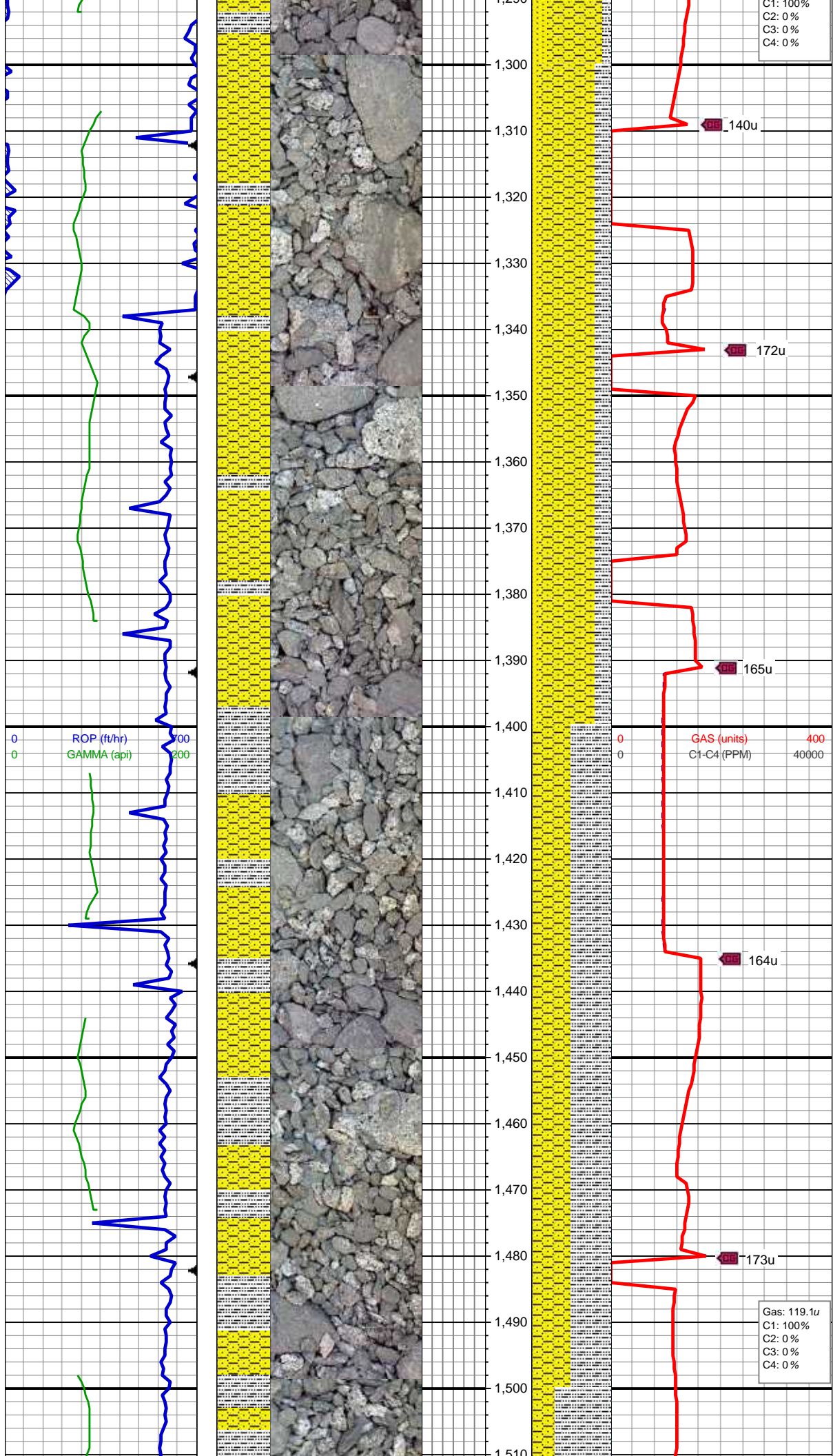
WT: 9 / VIS: 35

MD: 1,230 '
 TVD: 1,229.98 '
 Inclination: 0.4 °
 Azimuth: 308.1 °
 VS: 0.3 '

70% SHY SS: lt-med gy, blkly, frm, v f-f
gr, sb rnd, mod-w srt, cly cmt, non calc;
20% SS: wh-lt gy, clr-trnsl, speckl blk,
glau, sb rnd-ang, p srt, non calc
10% SLTY SH: lt-med gy, sft-sl frm, fri,
sb plty, vf gr, slty tex, rthy lstr, non calc

70% SHY SS: lt-med gy, blk, frm, v f-f
gr, sb rnd, mod-w srt, cly cmt, non calc;
20% SS: wh-lt gy, clr-trnsl, speckl blk,
glau, sb rnd-ang, p srt, non calc
10% SLTY SH: lt-med gy, sft-sl frm, fri,
sb plty, vf gr, slty tex, rthy lstr, non calc





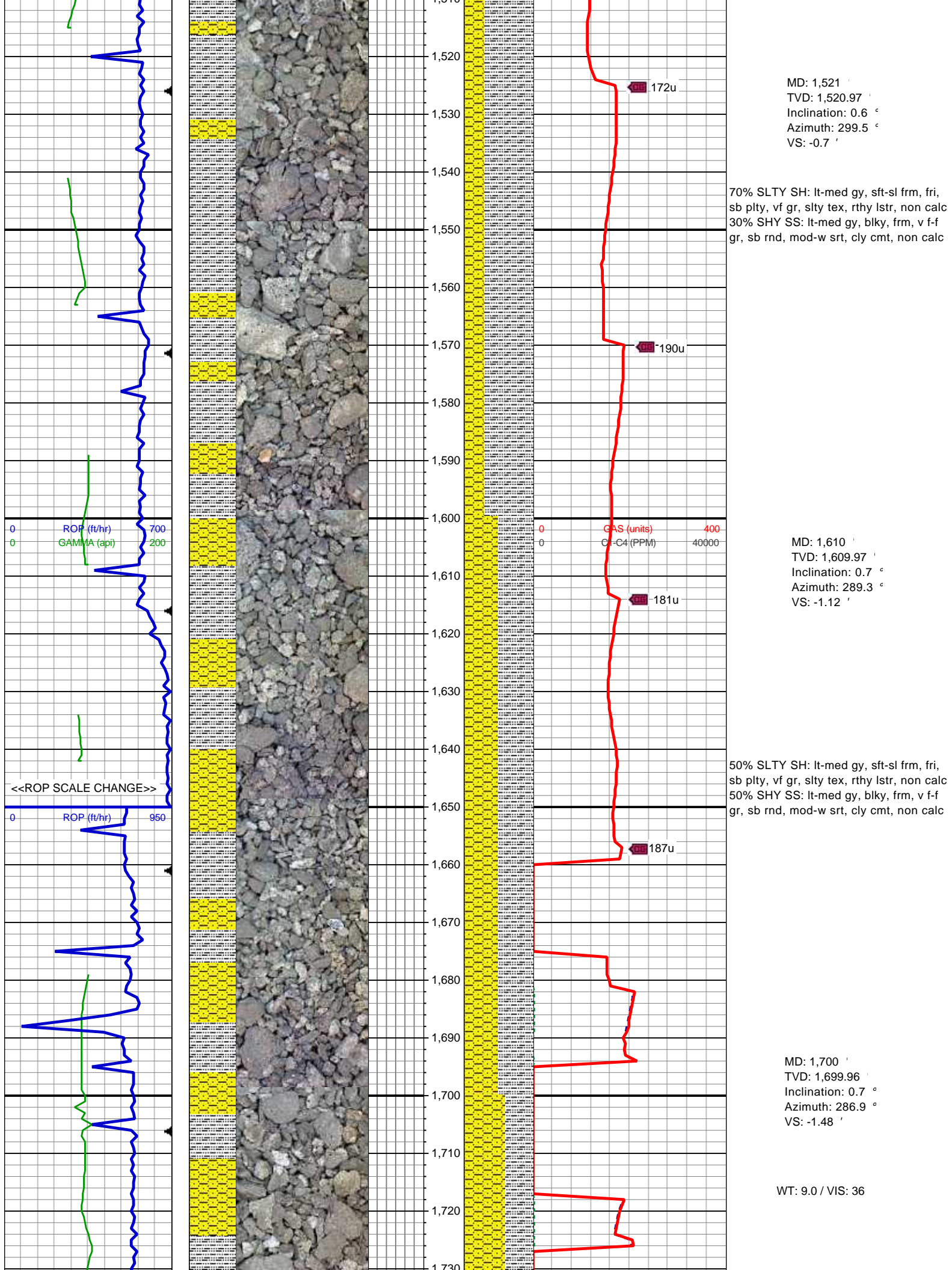
MD: 1,342 '
TVD: 1,341.98 '
Inclination: 0.4 °
Azimuth: 295.1 °
VS: -0.12 '

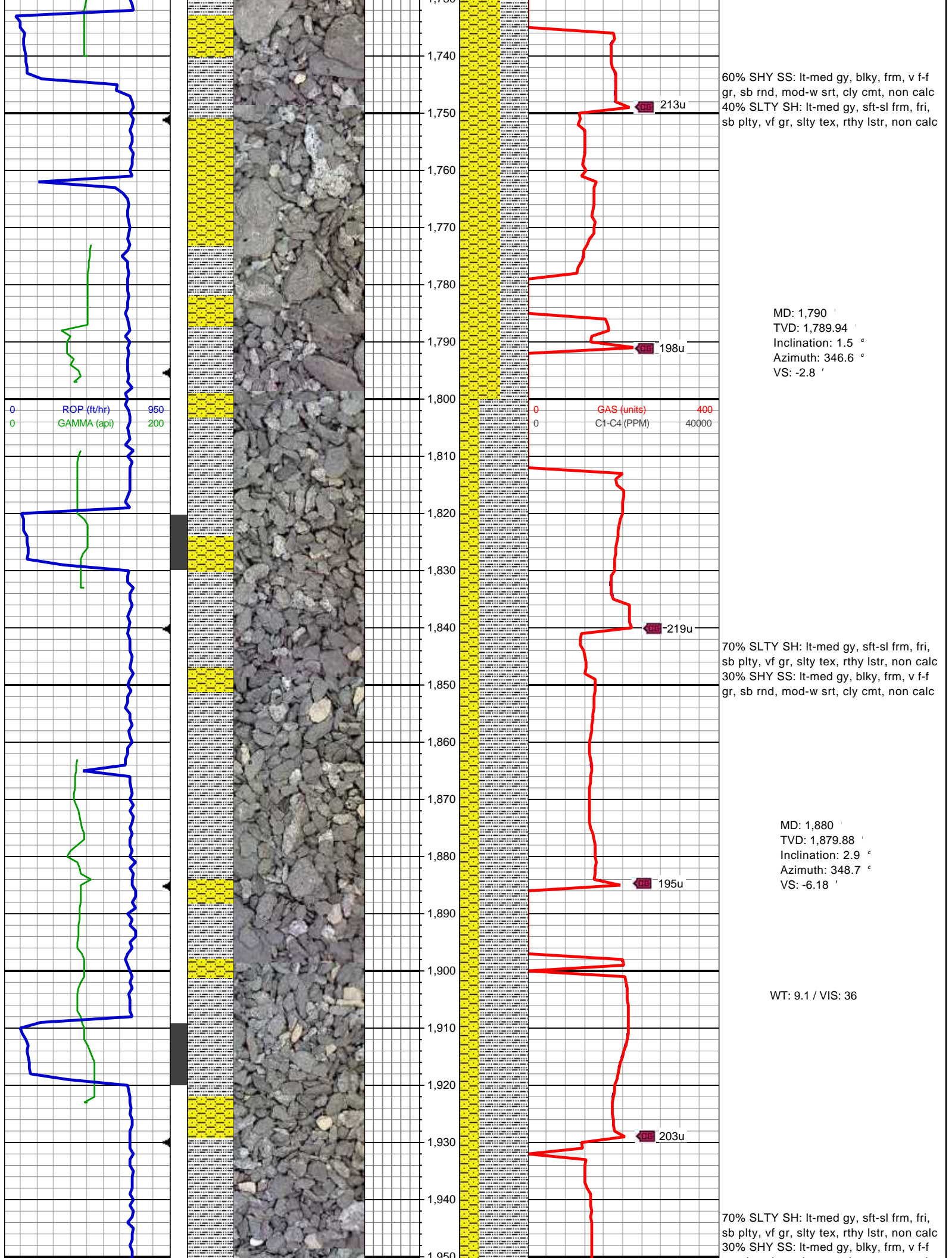
70% SHY SS: lt-med gy, blk, frm, v f-f
gr, sb rnd, mod-w srt, cly cmt, non calc;
20% SS: wh-lt gy, clr-trnsl, speckl blk,
glau, sb rnd-ang, p srt, non calc
10% SLTY SH: lt-med gy, sft-sl frm, fri,
sb plty, vf gr, slty tex, rthy lstr, non calc

WT: 9 / VIS: 35

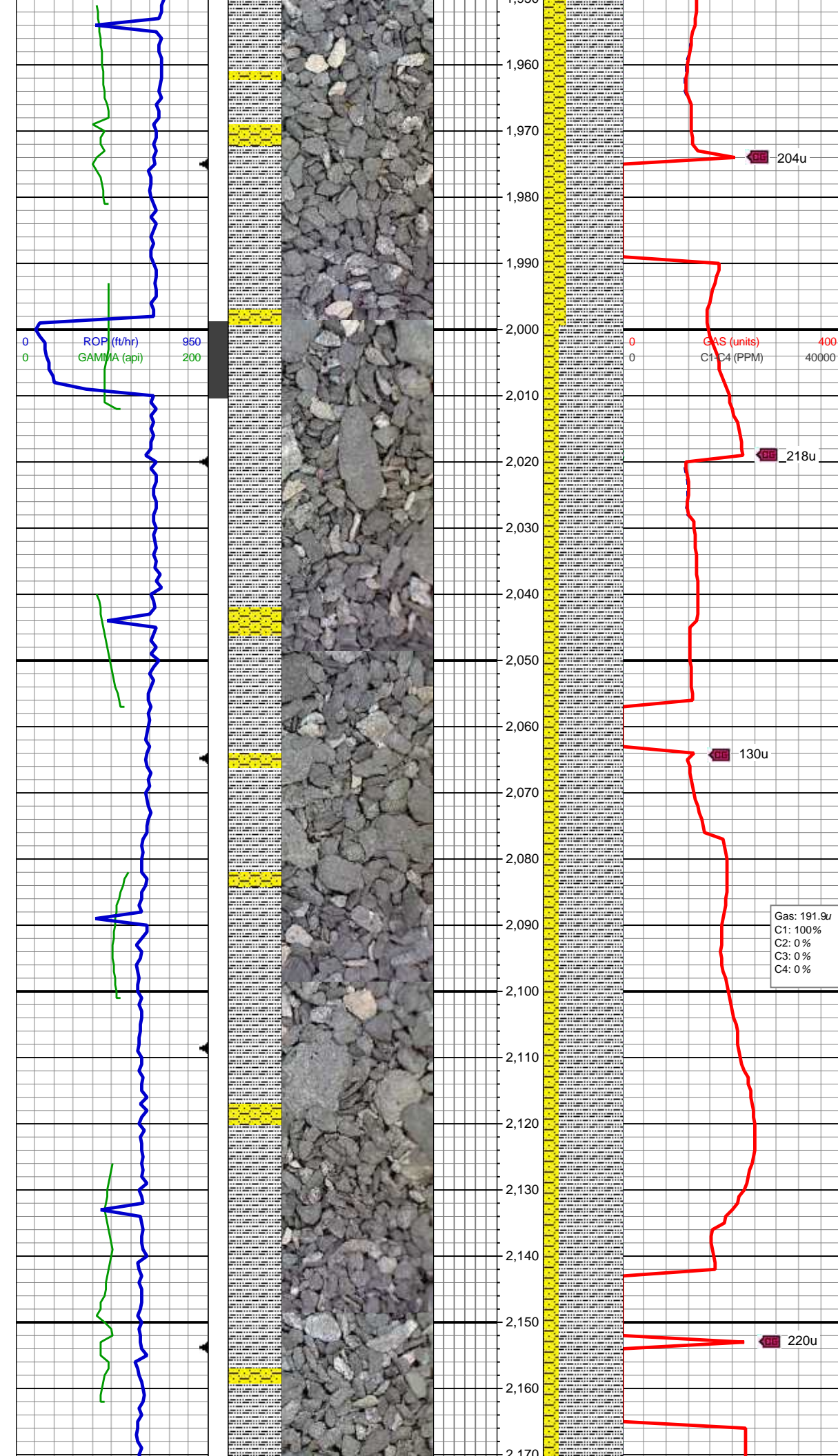
MD: 1,431 '
TVD: 1,430.97 '
Inclination: 0.4 °
Azimuth: 289.3 °
VS: -0.36 '

50% SHY SS: lt-med gy, blk, frm, v f-f
gr, sb rnd, mod-w srt, cly cmt, non calc;
50% SLTY SH: lt-med gy, sft-sl frm, fri,
sb plty, vf gr, slty tex, rthy lstr, non calc





gr, sb rnd, mod-w srt, cly cmt, non calc



MD: 1,969 '
TVD: 1,968.75 '
Inclination: 3.3 °
Azimuth: 6.7 °
VS: -10.94 '

204u

218u

130u

Gas: 191.9u
C1: 100%
C2: 0%
C3: 0%
C4: 0%

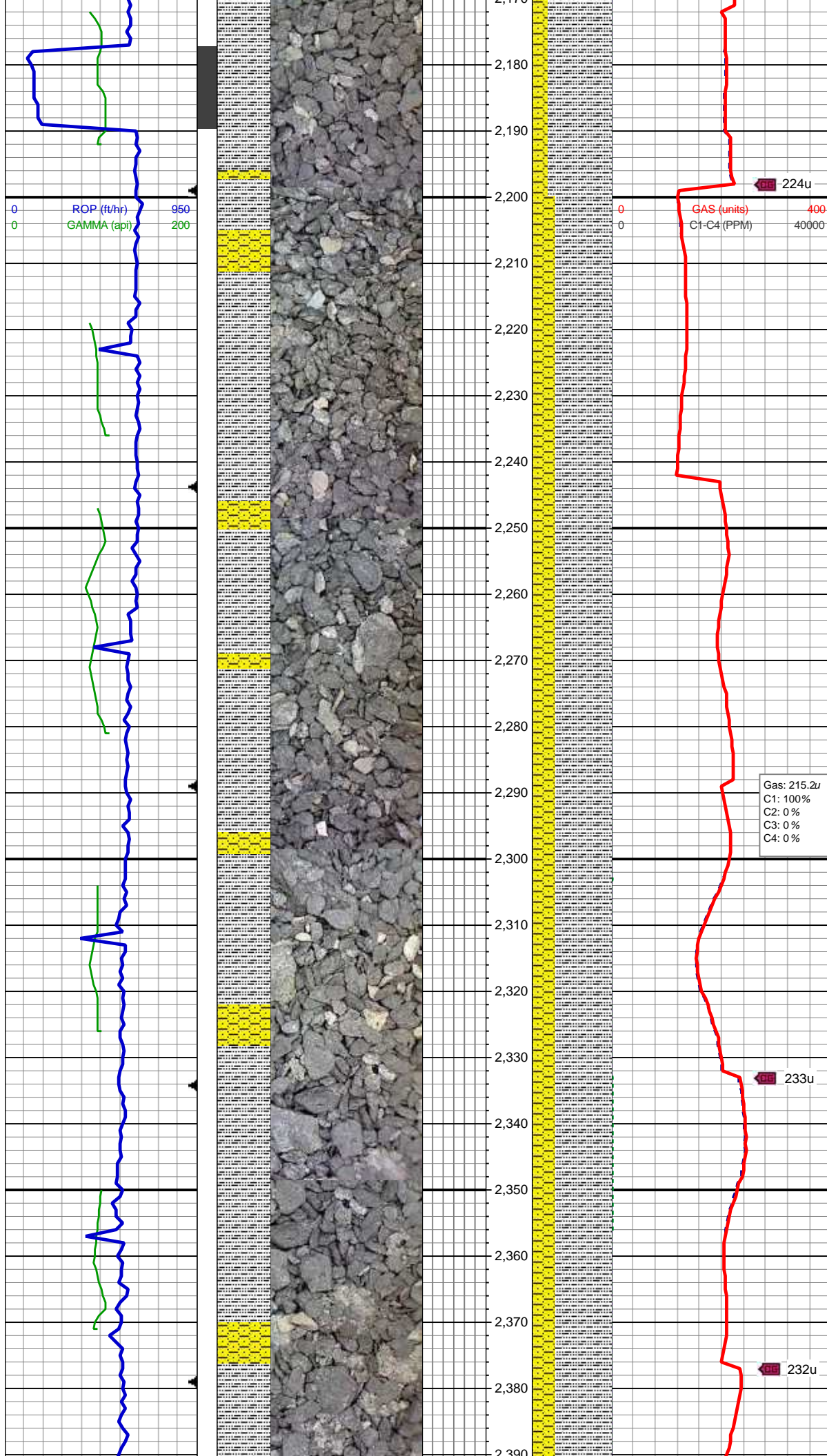
WT: 9.1 / VIS: 37

MD: 2,149 '
TVD: 2,148.27 '
Inclination: 4 °
Azimuth: 14.2 °
VS: -23.66 '

220u

80% SLTY SH: lt-med gy, sft-sl frm, fri,
sb plty, vf gr, slty tex, rthy lstr, non calc
20% SHY SS: lt-med gy, blkly, frm, v f-f
gr, sb rnd, mod-w srt, cly cmt, non calc

80% SLTY SH: lt-med gy, sft-sl frm, fri,
sb plty, vf gr, slty tex, rthy lstr, non calc
20% SHY SS: lt-med gy, blkly, frm, v f-f
gr, sb rnd, mod-w srt, cly cmt, non calc



WT: 9.2 / VIS: 39

MD: 2,238 '
TVD: 2,236.96 '
Inclination: 5.5 °
Azimuth: 7 °
VS: -30.88 '

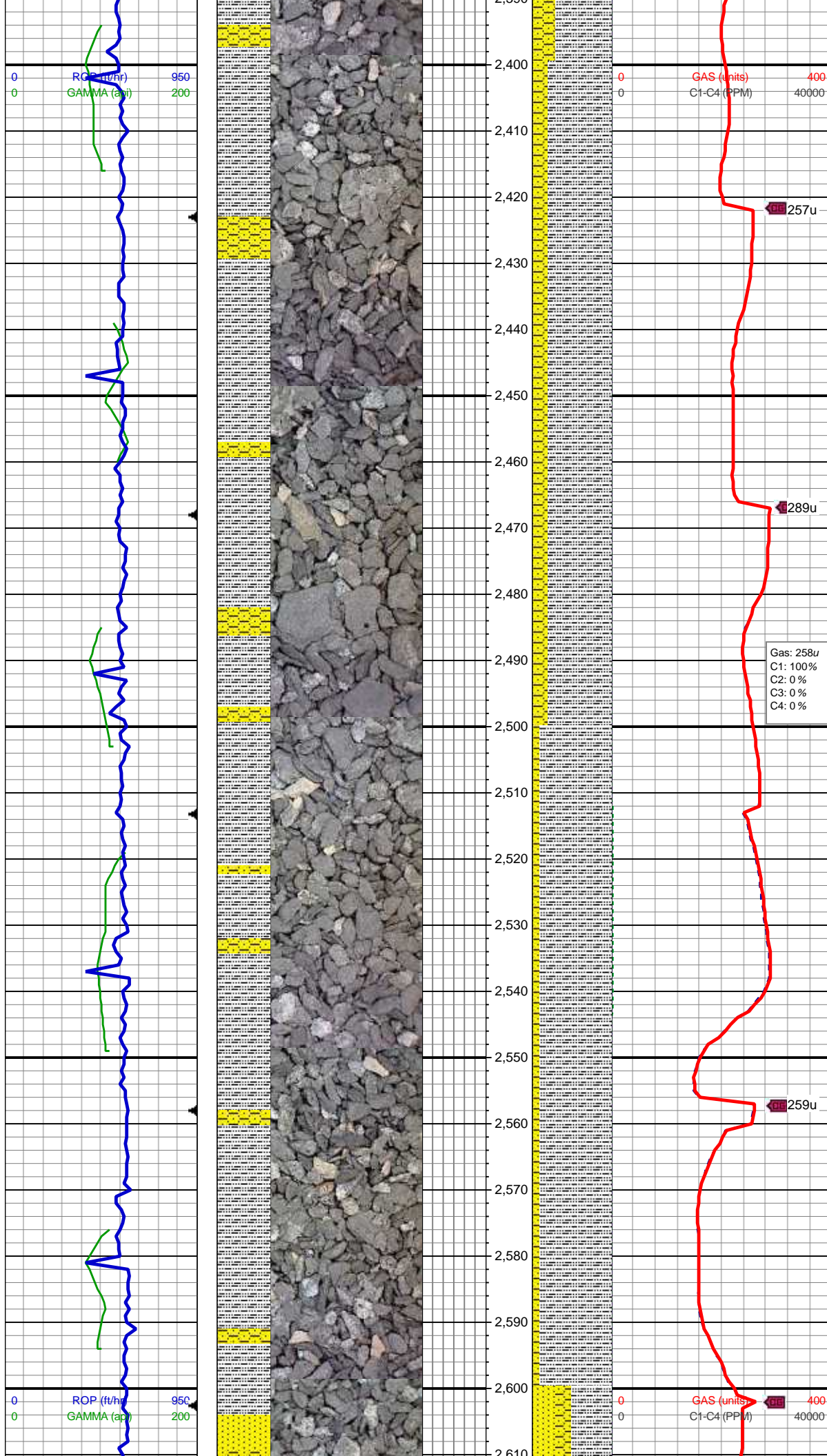
70% SLTY SH: lt-med gy, sft-sl frm, fri,
sb plty, vf gr, slty tex, rthy lstr, non calc
30% SHY SS: lt-med gy, blk, frm, v f-f
gr, sb rnd, mod-w srt, cly cmt, non calc

Gas: 215.2u
C1: 100%
C2: 0 %
C3: 0 %
C4: 0 %

MD: 2,328 '
TVD: 2,326.57 '
Inclination: 5.2 °
Azimuth: 6.9 °
VS: -39.2 '

70% SLTY SH: lt-med gy, sft-sl frm, fri,
sb plty, vf gr, slty tex, rthy lstr, non calc
30% SHY SS: lt-med gy, blk, frm, v f-f
gr, sb rnd, mod-w srt, cly cmt, non calc

WT: 9.2 / VIS: 39



MD: 2,418 '
TVD: 2,416.18 '
Inclination: 5.4 °
Azimuth: 9 °
VS: -47.41 '

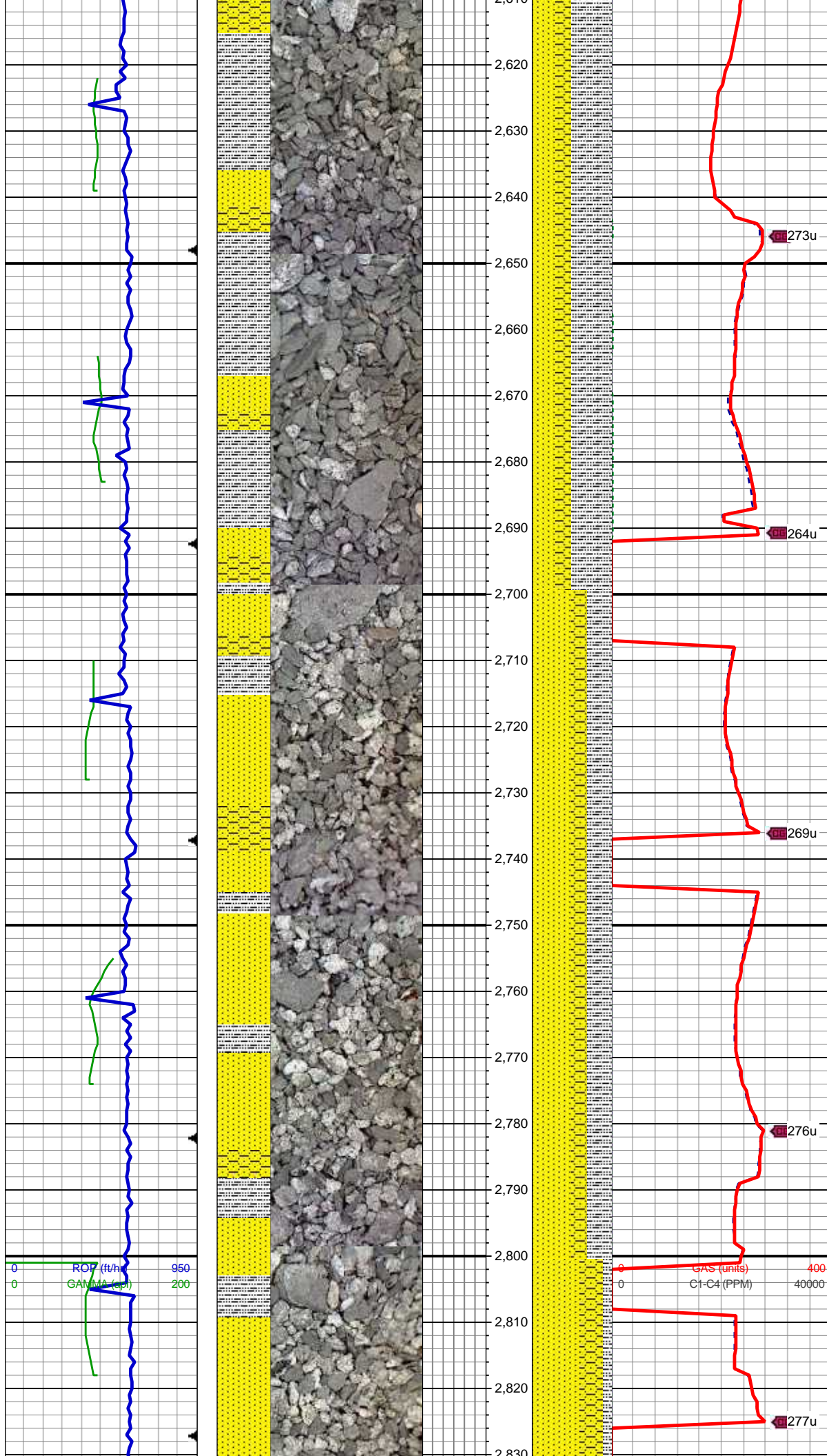
80% SLTY SH: lt-med gy, sft-sl frm, fri, sb plty, vf gr, slty tex, rthy lstr, non calc
20% SHY SS: lt-med gy, blk, frm, v f-f gr, sb rnd, mod-w srt, cly cmt, non calc

MD: 2,507 '
TVD: 2,504.84 '
Inclination: 4.7 °
Azimuth: 9 °
VS: -55.13 '

90% SLTY SH: lt-med gy, sft-sl frm, fri, sb plty, vf gr, slty tex, rthy lstr, non calc
10% SHY SS: lt-med gy, blk, frm, v f-f gr, sb rnd, mod-w srt, cly cmt, non calc

WT: 9.2 / VIS: 39

MD: 2,597 '
TVD: 2,594.56 '
Inclination: 4.2 °
Azimuth: 7.4 °
VS: -62.03 '



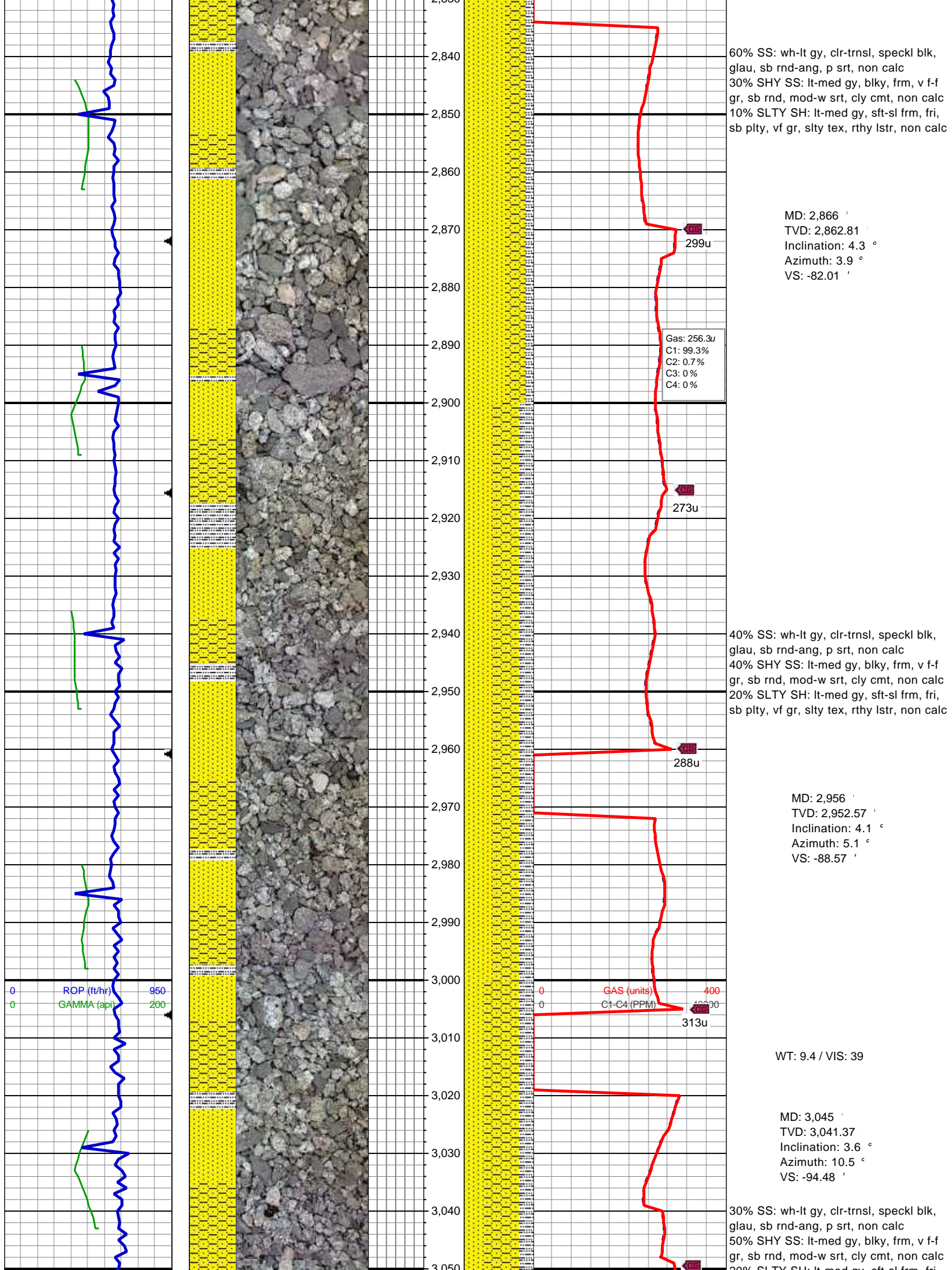
50% SLTY SH: lt-med gy, sft-sl frm, fri,
sb plty, vf gr, slty tex, rthy lstr, non calc
20% SHY SS: lt-med gy, blk, frm, v f-f
gr, sb rnd, mod-w srt, cly cmt, non calc;
30% SS: wh-lt gy, clr-trnsl, speckl blk,
glau, sb rnd-ang, p srt, non calc

MD: 2,687 '
TVD: 2,684.32 '
Inclination: 4.2 °
Azimuth: 5.6 °
VS: -68.57 '

50% SS: wh-lt gy, clr-trnsl, speckl blk,
glau, sb rnd-ang, p srt, non calc
20% SLTY SH: lt-med gy, sft-sl frm, fri,
sb plty, vf gr, slty tex, rthy lstr, non calc
30% SHY SS: lt-med gy, blk, frm, v f-f
gr, sb rnd, mod-w srt, cly cmt, non calc

MD: 2,776 '
TVD: 2,773.07 '
Inclination: 4.4 °
Azimuth: 5.4 °
VS: -75.2 '

WT: 9.3 / VIS: 39



60% SS: wh-lt gy, clr-trnsl, speckl blk, glau, sb rnd-ang, p srt, non calc
30% SHY SS: lt-med gy, blk, frm, v f-f gr, sb rnd, mod-w srt, cly cmt, non calc
10% SLTY SH: lt-med gy, sft-sl frm, fri, sb plty, vf gr, slty tex, rthy lstr, non calc

MD: 2,866 '
TVD: 2,862.81 '
Inclination: 4.3 °
Azimuth: 3.9 °
VS: -82.01 '

Gas: 256.3u
C1: 99.3%
C2: 0.7%
C3: 0%
C4: 0%

40% SS: wh-lt gy, clr-trnsl, speckl blk, glau, sb rnd-ang, p srt, non calc
40% SHY SS: lt-med gy, blk, frm, v f-f gr, sb rnd, mod-w srt, cly cmt, non calc
20% SLTY SH: lt-med gy, sft-sl frm, fri, sb plty, vf gr, slty tex, rthy lstr, non calc

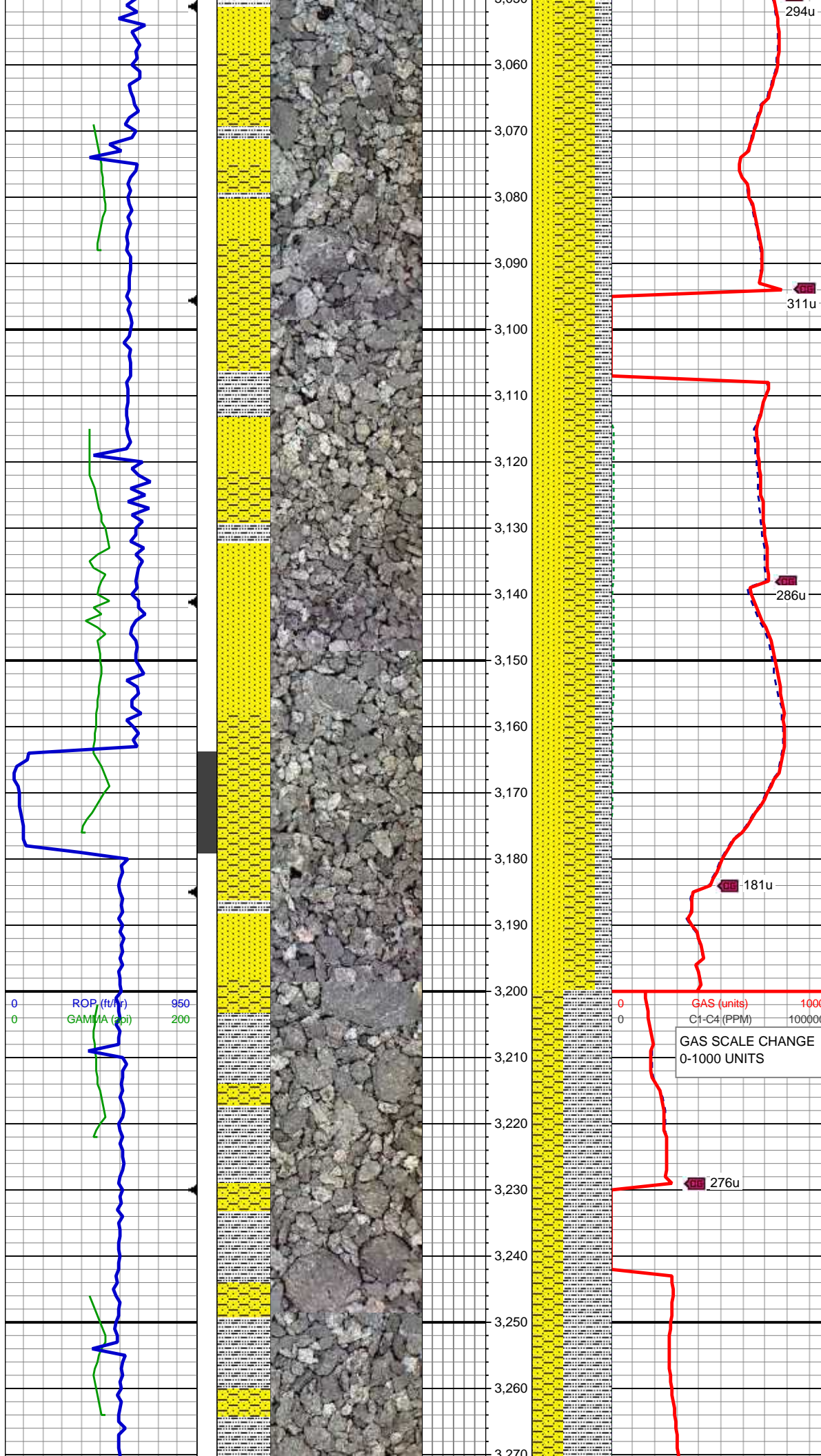
MD: 2,956 '
TVD: 2,952.57 '
Inclination: 4.1 °
Azimuth: 5.1 °
VS: -88.57 '

GAS (units)
C1-C4 (PPM)
313u

WT: 9.4 / VIS: 39

MD: 3,045 '
TVD: 3,041.37 '
Inclination: 3.6 °
Azimuth: 10.5 °
VS: -94.48 '

30% SS: wh-lt gy, clr-trnsl, speckl blk, glau, sb rnd-ang, p srt, non calc
50% SHY SS: lt-med gy, blk, frm, v f-f gr, sb rnd, mod-w srt, cly cmt, non calc
20% SLTY SH: lt-med gy, sft-sl frm, fri, sb plty, vf gr, slty tex, rthy lstr, non calc



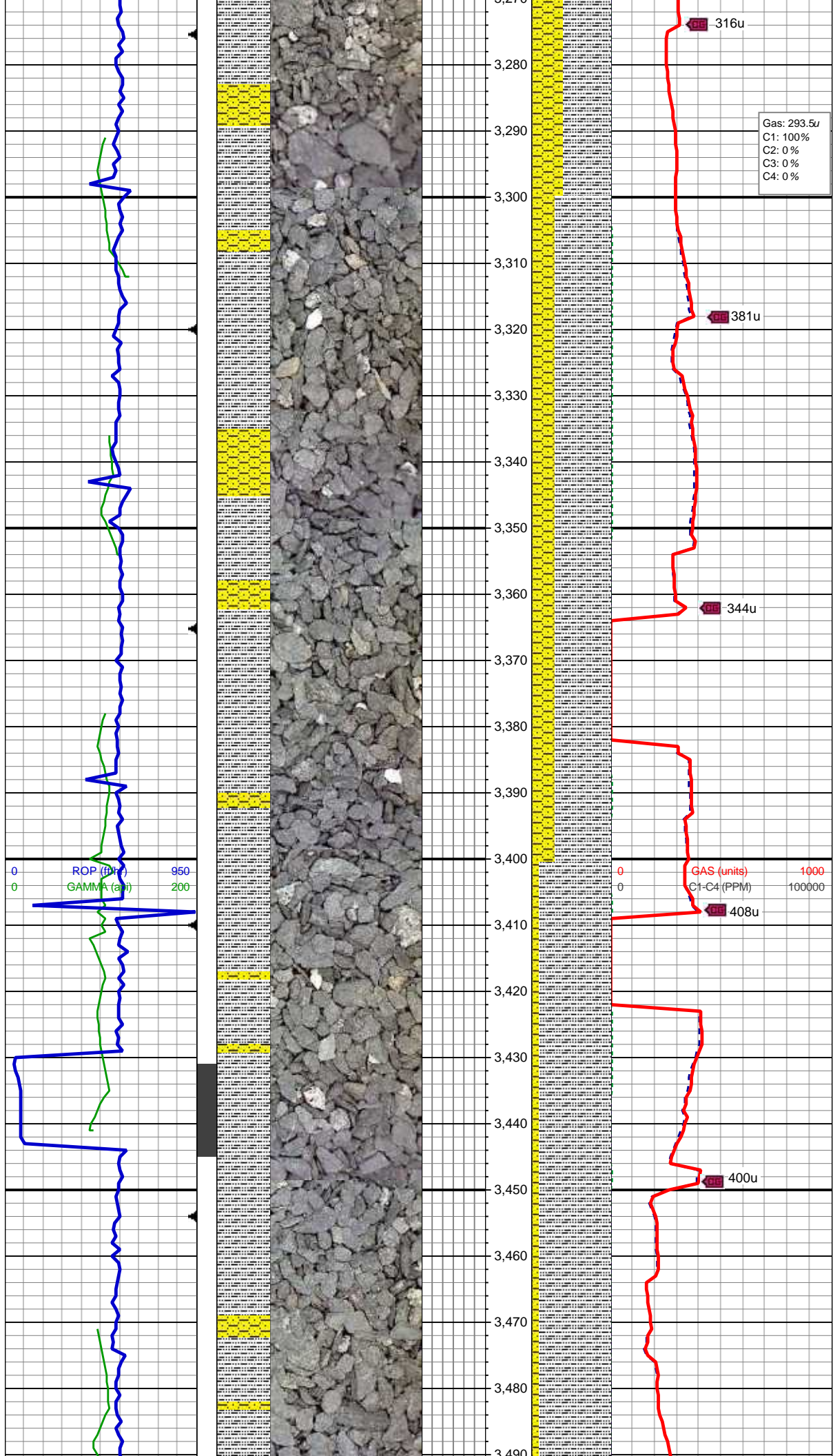
MD: 3,135 '
TVD: 3,131.21 '
Inclination: 3.3 °
Azimuth: 11.6 °
VS: -99.78 '

40% SS: wh-lt gy, clr-trnsl, speckl blk, glau, sb rnd-ang, p srt, non calc
40% SHY SS: lt-med gy, blk, frm, v f-f gr, sb rnd, mod-w srt, cly cmt, non calc
20% SLTY SH: lt-med gy, sft-sl frm, fri, sb plty, vf gr, slty tex, rthy lstr, non calc

MD: 3,225 '
TVD: 3,221.04 '
Inclination: 3.8 °
Azimuth: 359.8 °
VS: -105.29 '

WT: 9.4 / VIS: 39

60%SLTY SH: lt-med gy, sft-sl frm, fri, sb plty, vf gr, slty tex, rthy lstr, non calc
40%SHY SS: lt-med gy, blk, frm, v f-f gr, sb rnd, mod-w srt, cly cmt, non calc



MD: 3,314
TVD: 3,309.87
Inclination: 3.1 °
Azimuth: 7.9 °
VS: -110.62

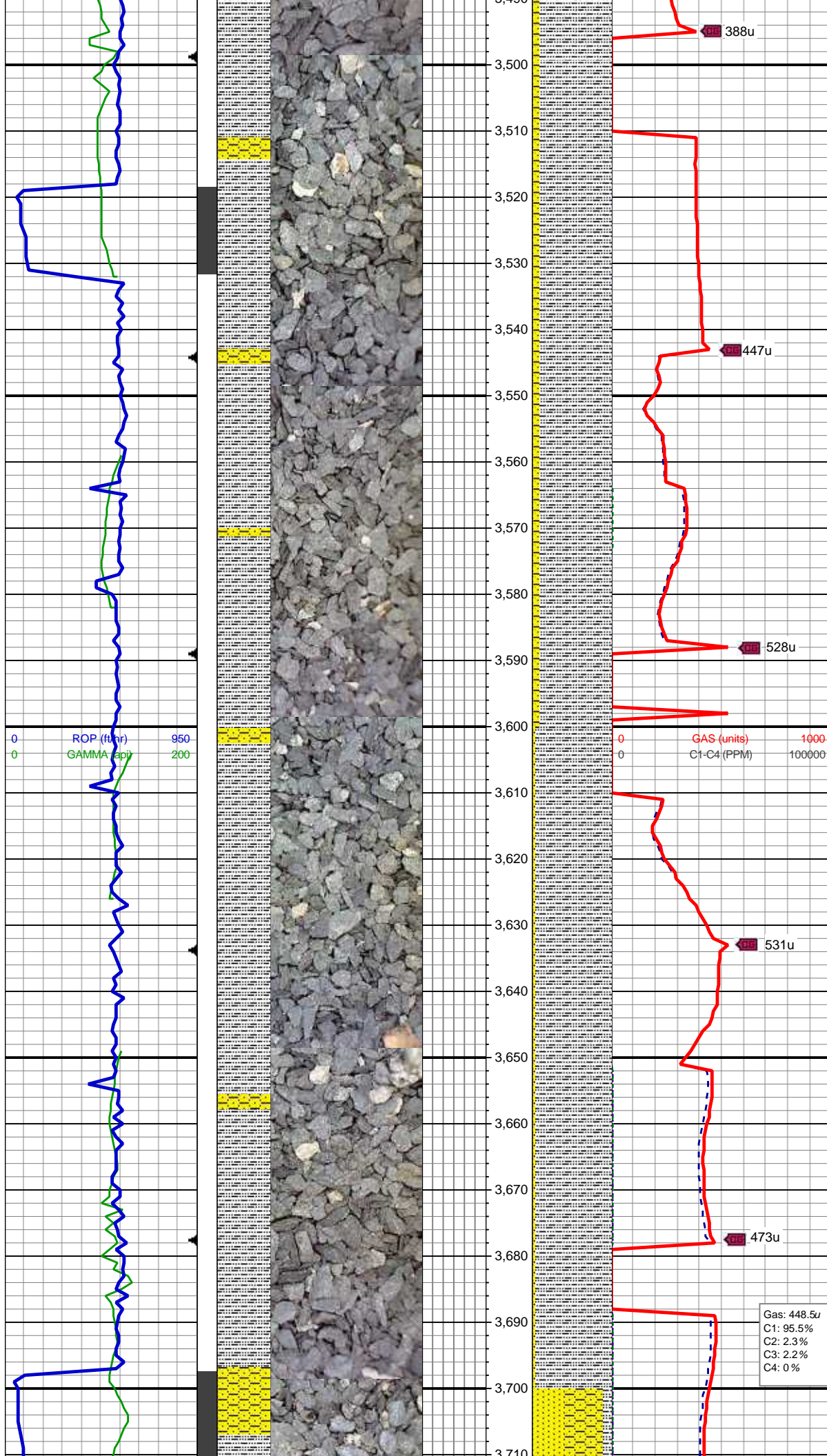
70% SLTY SH: lt-med gy, sft-sl frm, fri,
sb plty, vf gr, slty tex, rthy lstr, non calc
30% SHY SS: lt-med gy, blk, frm, v f-f
gr, sb rnd, mod-w srt, cly cmt, non calc

MD: 3,404
TVD: 3,399.77
Inclination: 2.3 °
Azimuth: 16.7 °
VS: -114.75

95% SLTY SH: lt-med gy, sft-sl frm, fri,
sb plty, vf gr, slty tex, rthy lstr, non calc
5% SHY SS: lt-med gy, blk, frm, v f-f
gr, sb rnd, mod-w srt, cly cmt, non calc

WT: 9.5 / VIS: 41

MD: 3,494



MD: 3,494
TVD: 3,489.69 '
Inclination: 2.6 °
Azimuth: 3.9 °
VS: -118.5 '

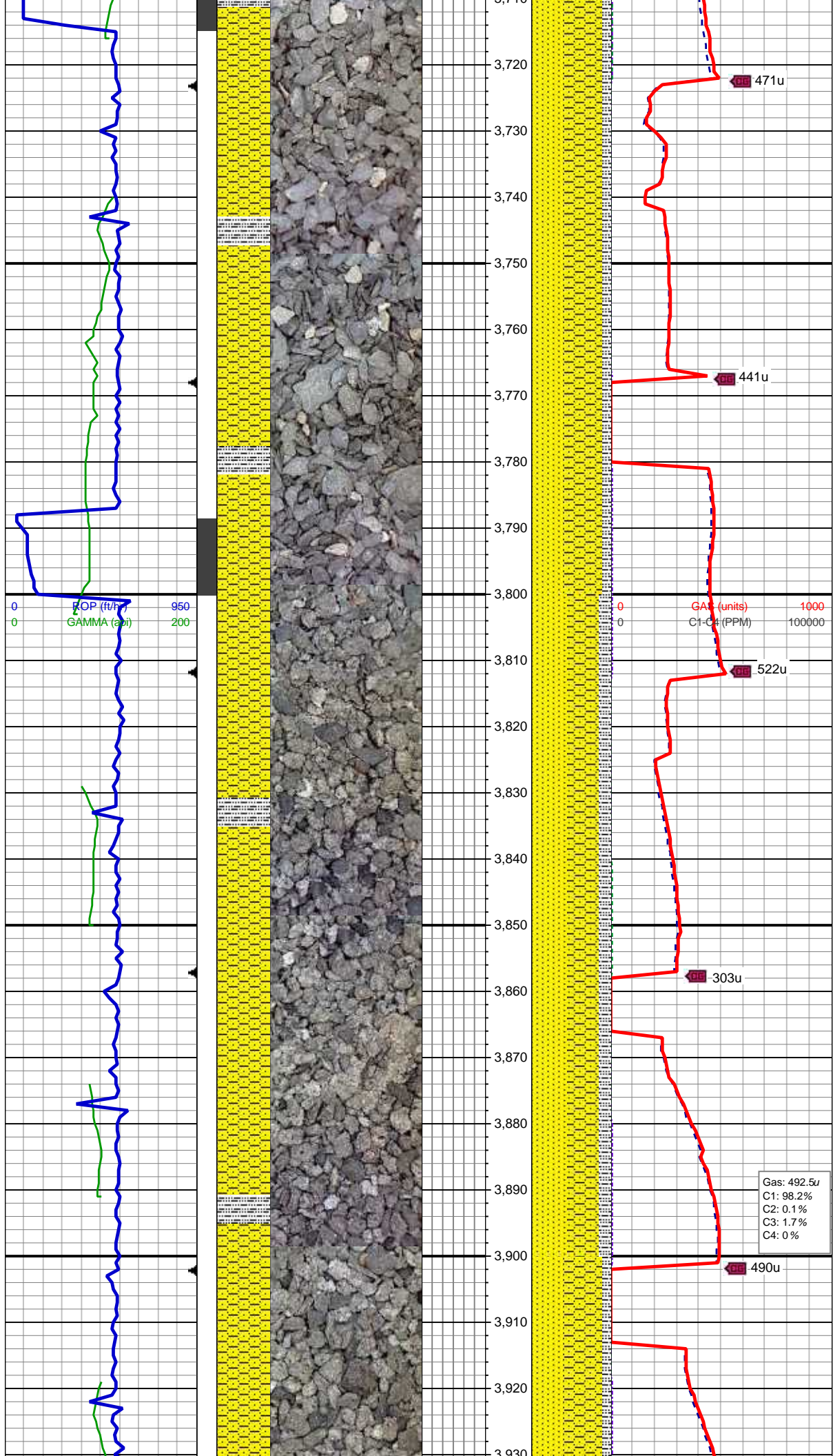
95% SLTY SH: lt-med gy, sft-sl frm, fri,
sb plty, vf gr, slty tex, rthy lstr, non calc
5% SHY SS: lt-med gy, blk, frm, v f-f
gr, sb rnd, mod-w srt, cly cmt, non calc

MD: 3,583
TVD: 3,578.58 '
Inclination: 3.1 °
Azimuth: 1.6 °
VS: -122.92 '

95% SLTY SH: lt-med gy, sft-sl frm, fri,
sb plty, vf gr, slty tex, rthy lstr, non calc
5% SHY SS: lt-med gy, blk, frm, v f-f
gr, sb rnd, mod-w srt, cly cmt, non calc

MD: 3,673
TVD: 3,668.5 '
Inclination: 1.8 °
Azimuth: 8.6 °
VS: -126.75 '

Gas: 448.5u
C1: 95.5%
C2: 2.3%
C3: 2.2%
C4: 0%



MD: 3,762
TVD: 3,757.41
Inclination: 3.1
Azimuth: 359.8
VS: -130.53

WT: 9.5 / VIS: 43

MD: 3,852
TVD: 3,847.2
Inclination: 4.7
Azimuth: 356.3
VS: -136.65

MD: 3,942
TVD: 3,936.91
Inclination: 4.6
Azimuth: 357.5

Azimuth: 357.5 °
VS: -143.94 '

40% SS: wh-lt gy, clr-trnsl, speckl blk, sb rnd-ang, p srt, w cons, f gr, sl calc;
50% SHY SS: lt- med gy, blk, frm, vf-f gr, sb rnd-ang, mod-w srt, cl sup, cly cmt, non calc; 10% SLTY SH: lt-med gy, occ dk gy, sft-sl frm, sb plty-blky, vf gr, slty tex, sl calc

WT: 9.55 / VIS: 41

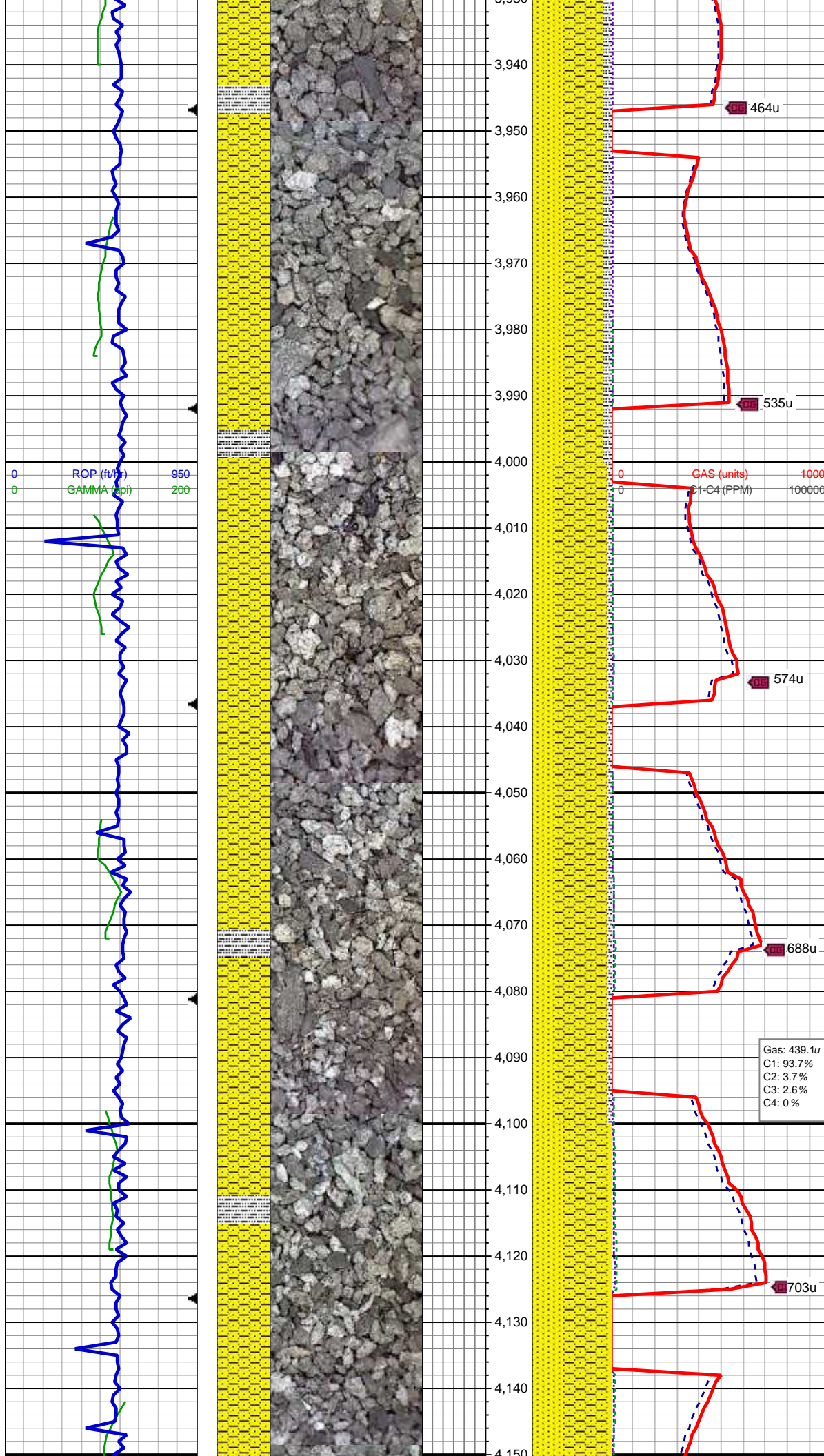
MD: 4,031 '
TVD: 4,025.66 '
Inclination: 4 °
Azimuth: 2.6 °
VS: -150.6 '

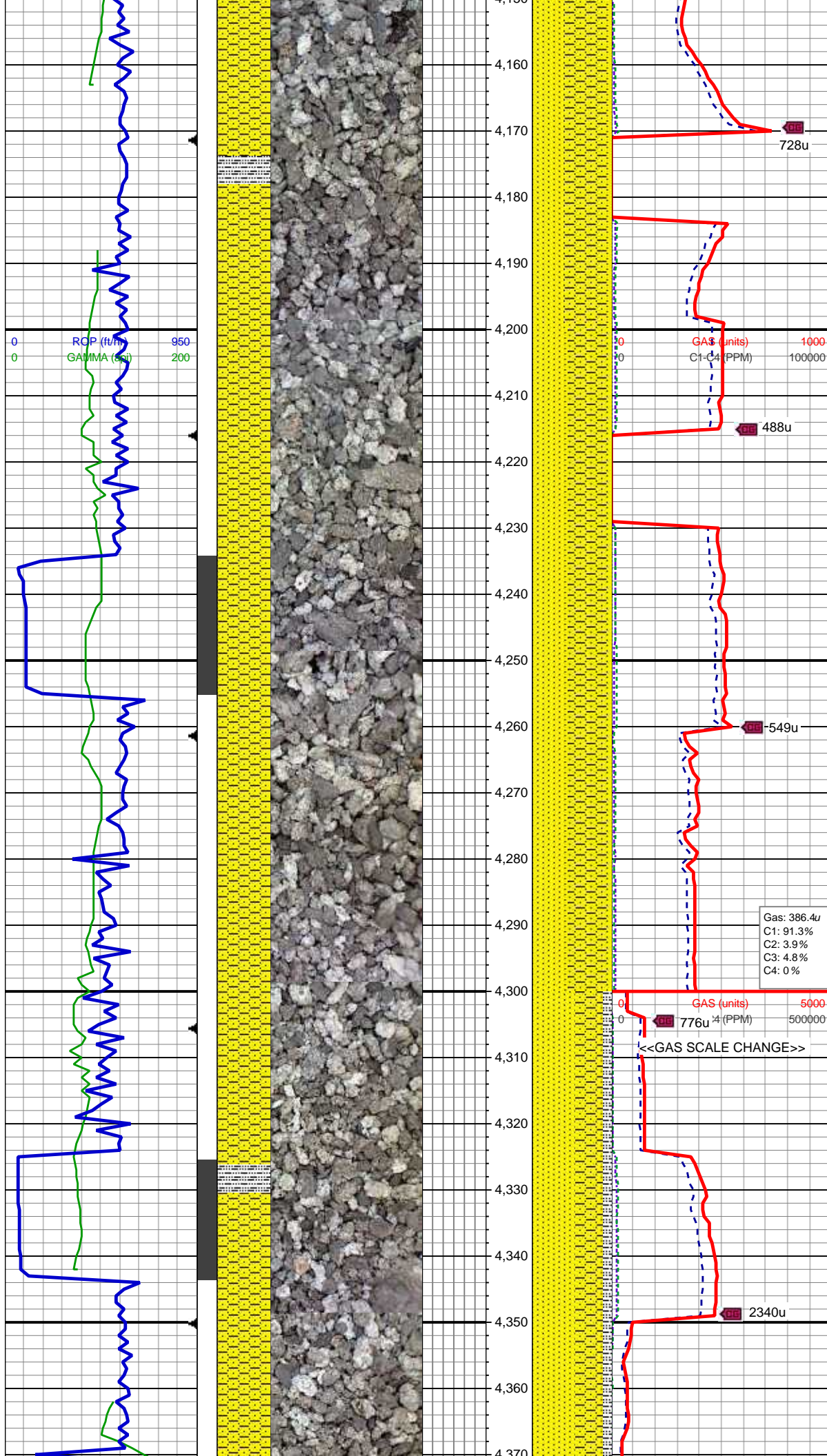
30% SS: wh-lt gy, clr-trnsl, speckl blk, sb rnd-ang, p srt, w cons, f gr, sl calc;
65% SHY SS: lt- med gy, blk, frm, vf-f gr, sb rnd-ang, mod-w srt, cl sup, cly cmt, non calc; 5% SLTY SH: lt-med gy, occ dk gy, sft-sl frm, sb plty-blky, vf gr, slty tex, sl calc

Gas: 439.1u
C1: 93.7%
C2: 3.7%
C3: 2.6%
C4: 0%

MD: 4,121 '
TVD: 4,115.47 '
Inclination: 3.4 °
Azimuth: 16.9 °
VS: -156.28 '

40% SS: wh-lt gy, clr-trnsl, speckl blk, sb rnd-ang, p srt, w cons, f gr, sl calc;
60% SHY SS: lt- med gy, blk, frm, vf-f





60% SHY SS: lt-med gy, blk, frm, vf-f
gr, sb rnd-ang, mod-w srt, cl sup, cly
cmt, non calc

MD: 4,211 '
TVD: 4,205.32 '
Inclination: 3.2 °
Azimuth: 24.8 °
VS: -161.09 '

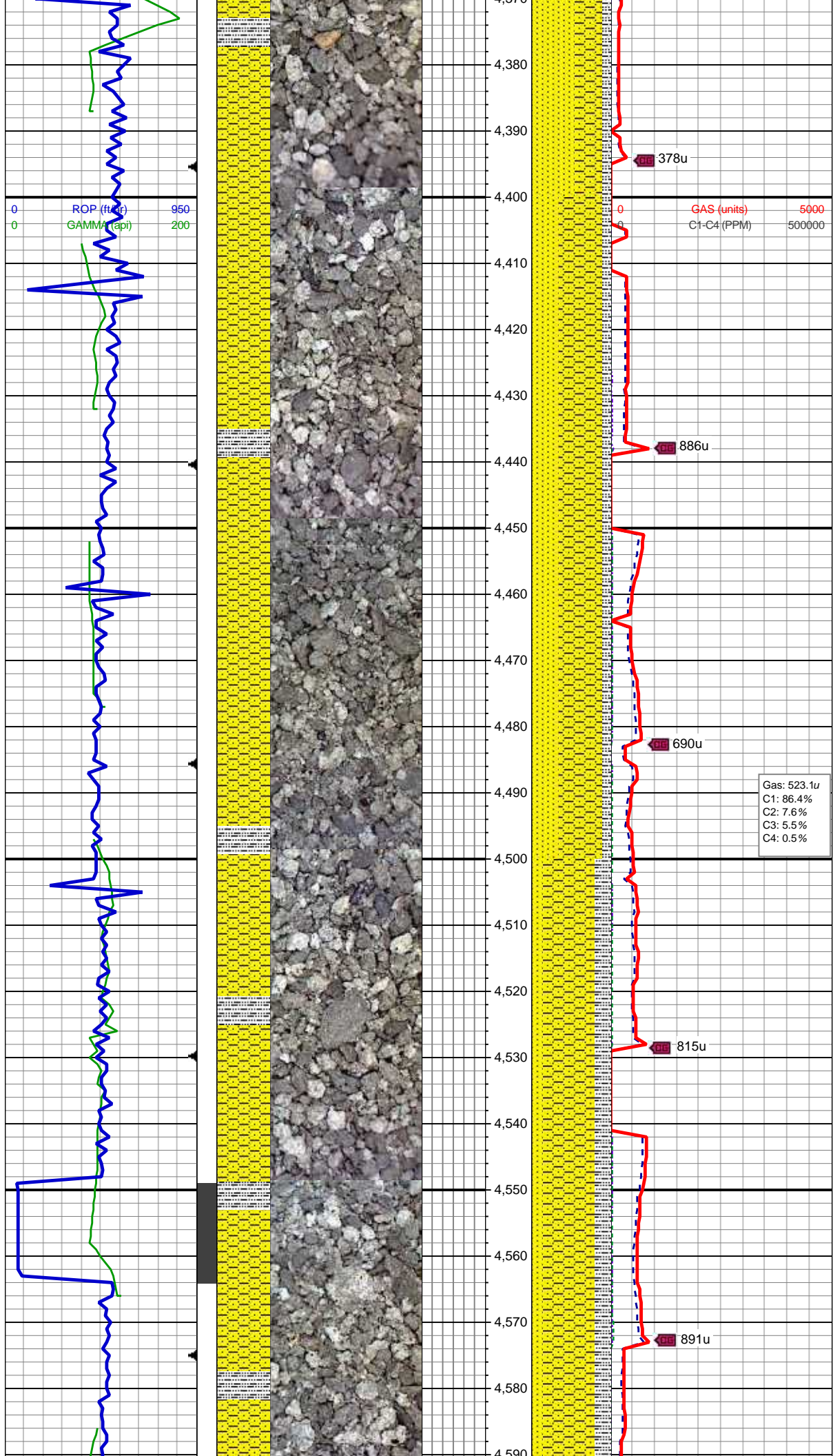
WT: 9.5 / VIS: 41

45% SS: wh-lt gy, clr-trnsl, speckl blk,
sb rnd-ang, p srt, w cons, f gr, sl calc;
55% SHY SS: lt-med gy, blk, frm, vf-f
gr, sb rnd-ang, mod-w srt, cl sup, cly
cmt, non calc

Gas: 386.4u
C1: 91.3%
C2: 3.9%
C3: 4.8%
C4: 0 %

MD: 4,300 '
TVD: 4,294.11 '
Inclination: 4.7 °
Azimuth: 15.1 °
VS: -166.84 '

55% SS: wh-lt gy, clr-trnsl, speckl blk,
sb rnd-ang, p srt, w cons, f gr, sl calc;
35% SHY SS: lt-med gy, blk, frm, vf-f
gr, sb rnd-ang, mod-w srt, cl sup, cly
cmt, non calc; 10% SLTY SH: lt-med gy,
occ dk gy, sft-sl frm, sb plty-blky, vf gr,
silty tex, sl calc



MD: 4,390 '
TVD: 4,383.8 '
Inclination: 4.8 °
Azimuth: 2.6 °
VS: -174.15 '

WT: 9.3 / VIS: 41

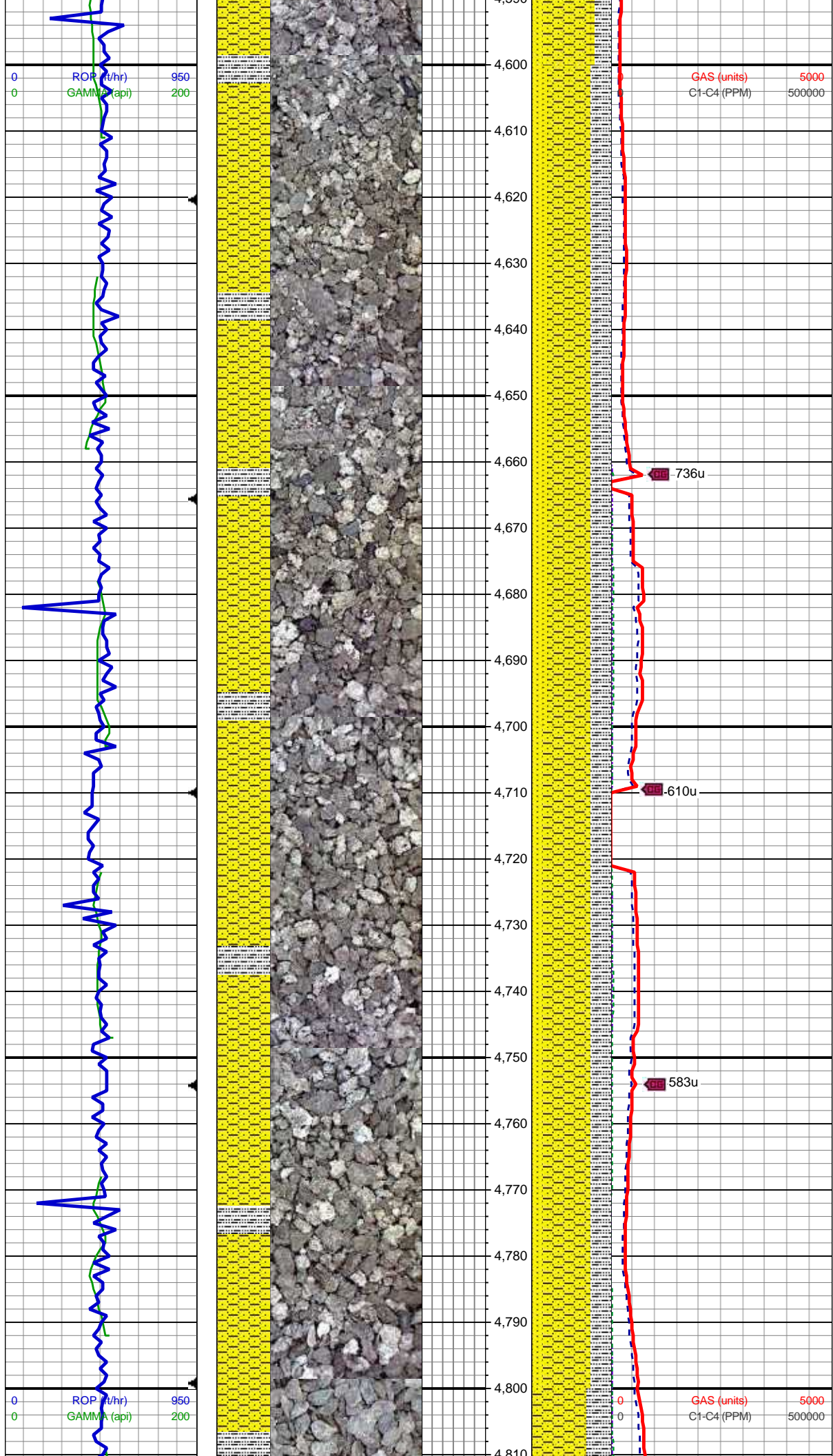
35% SS: wh-lt gy, clr-trnsl, speckl blk, sb rnd-ang, p srt, w cons, f gr, sl calc;
55% SHY SS: lt-med gy, blk, frm, vf-f gr, sb rnd-ang, mod-w srt, cl sup, cly cmt, non calc; 10% SLTY SH: lt-med gy, occ dk gy, sft-sl frm, sb plty-blky, vf gr, slty tex, sl calc

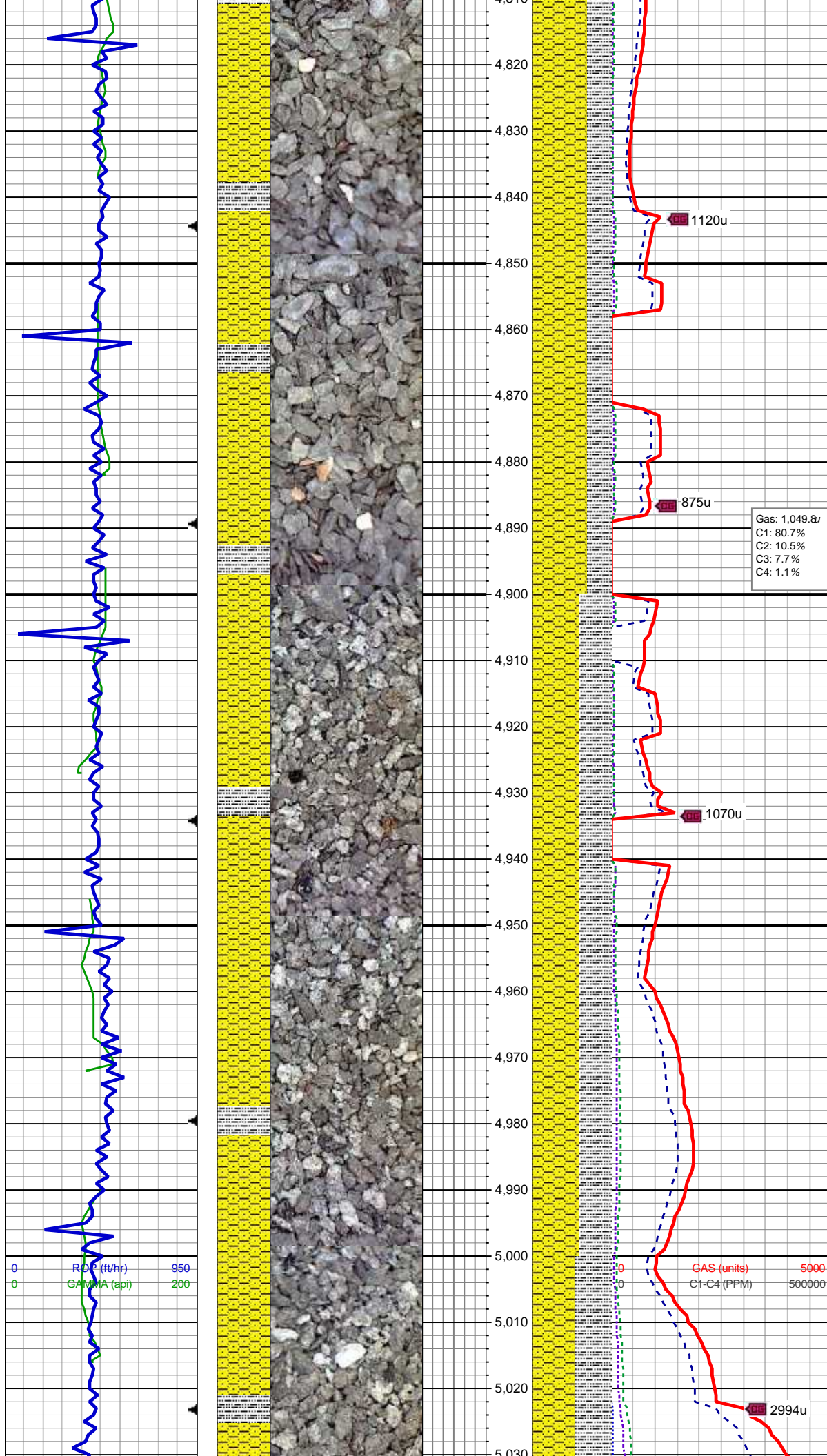
MD: 4,480 '
TVD: 4,473.49 '
Inclination: 4.7 °
Azimuth: 8.1 °
VS: -181.55 '

Gas: 523.1u
C1: 86.4%
C2: 7.6%
C3: 5.5%
C4: 0.5%

15% SS: wh-lt gy, clr-trnsl, speckl blk, sb rnd-ang, p srt, w cons, f gr, sl calc;
65% SHY SS: lt-med gy, blk, frm, vf-f gr, sb rnd-ang, mod-w srt, cl sup, cly cmt, non calc; 20% SLTY SH: lt-med gy, occ dk gy, sft-sl frm, sb plty-blky, vf gr, slty tex, sl calc

MD: 4,570 '
TVD: 4,563.23 '
Inclination: 4 °
Azimuth: 4.9 °
VS: -188.31 '





MD: 4,839 '
TVD: 4,831.86 '
Inclination: 2.1 °
Azimuth: 354.2 °
VS: -202.17 '

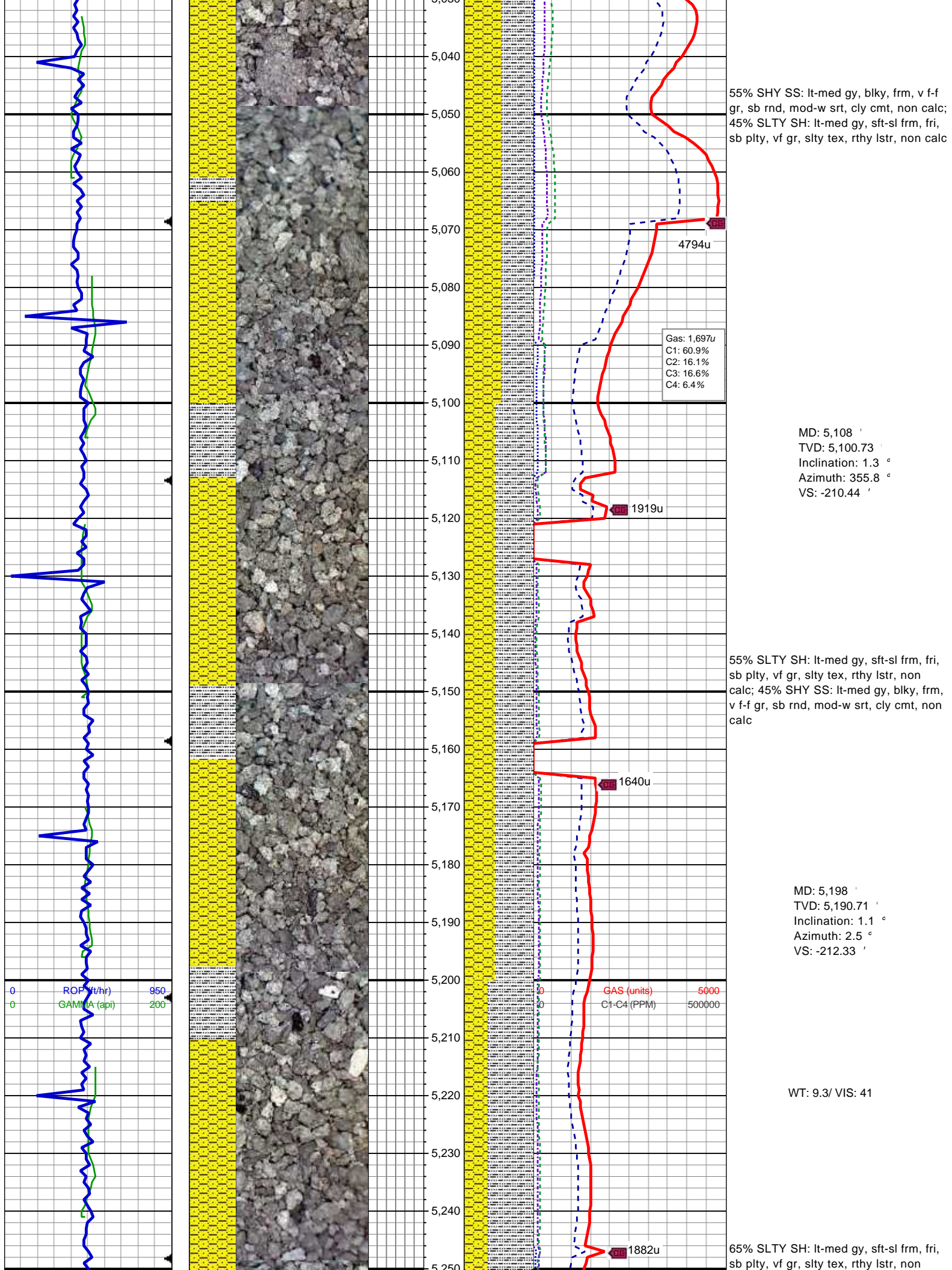
70% SHY SS: lt-med gy, blk, frm, v f-f gr, sb rnd, mod-w srt, cly cmt, non calc;
30% SLTY SH: lt-med gy, sft-sl frm, fri, sb plty, vf gr, slty tex, rthy lstr, non calc

MD: 4,929 '
TVD: 4,921.81 '
Inclination: 1.8 °
Azimuth: 355.6 °
VS: -205.22 '

60% SHY SS: lt-med gy, blk, frm, v f-f gr, sb rnd, mod-w srt, cly cmt, non calc;
40% SLTY SH: lt-med gy, sft-sl frm, fri, sb plty, vf gr, slty tex, rthy lstr, non calc

WT: 9.25/ VIS: 41

MD: 5,018 '
TVD: 5,010.76 '
Inclination: 1.8 °
Azimuth: 357.4 °
VS: -208.01 '



55% SHY SS: lt-med gy, blk, frm, v f-f gr, sb rnd, mod-w srt, cly cmt, non calc;
45% SLTY SH: lt-med gy, sft-sl frm, fri, sb plty, vf gr, slty tex, rthy lstr, non calc

Gas: 1,697u
C1: 60.9%
C2: 16.1%
C3: 16.6%
C4: 6.4%

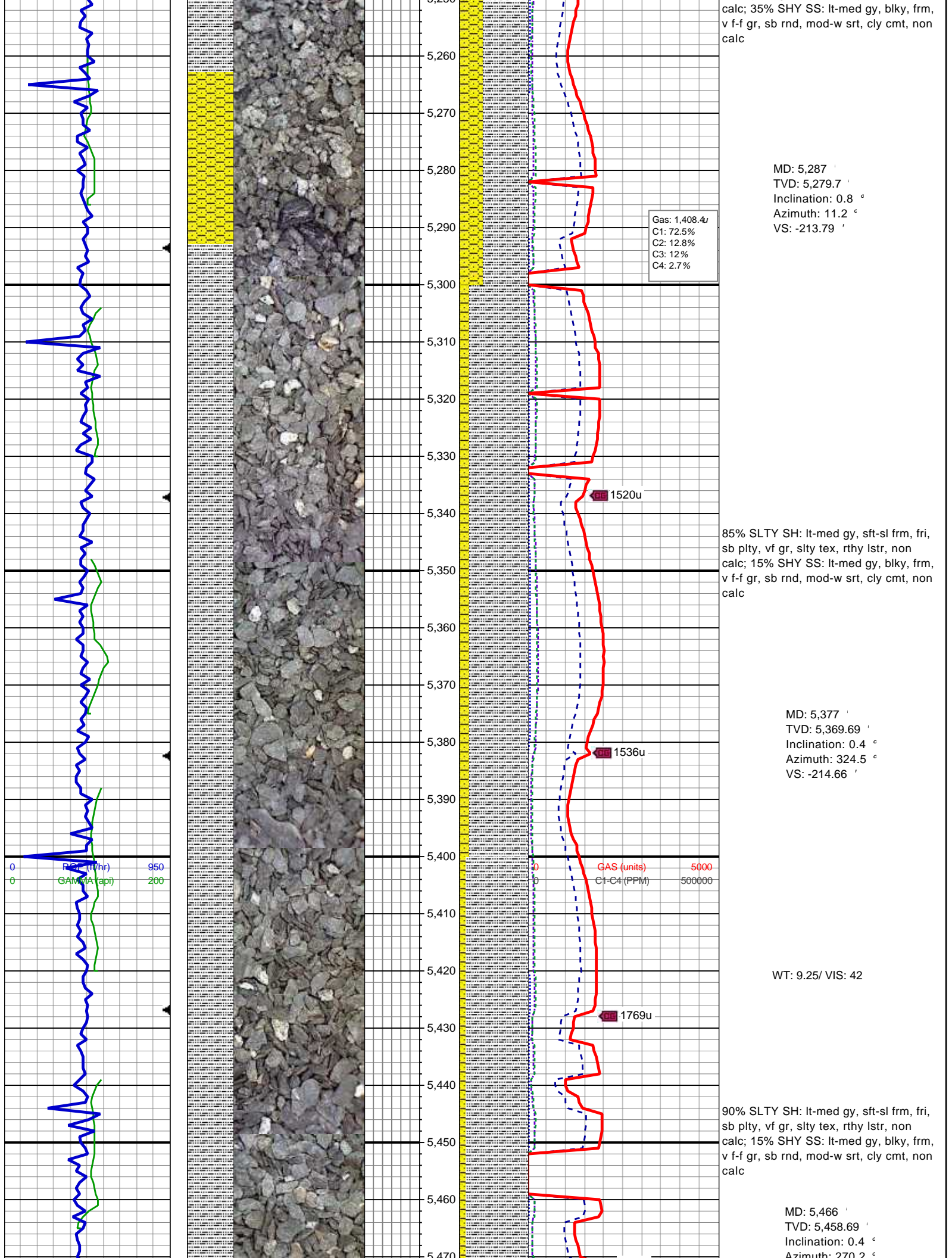
MD: 5,108 '
TVD: 5,100.73 '
Inclination: 1.3 °
Azimuth: 355.8 °
VS: -210.44 '

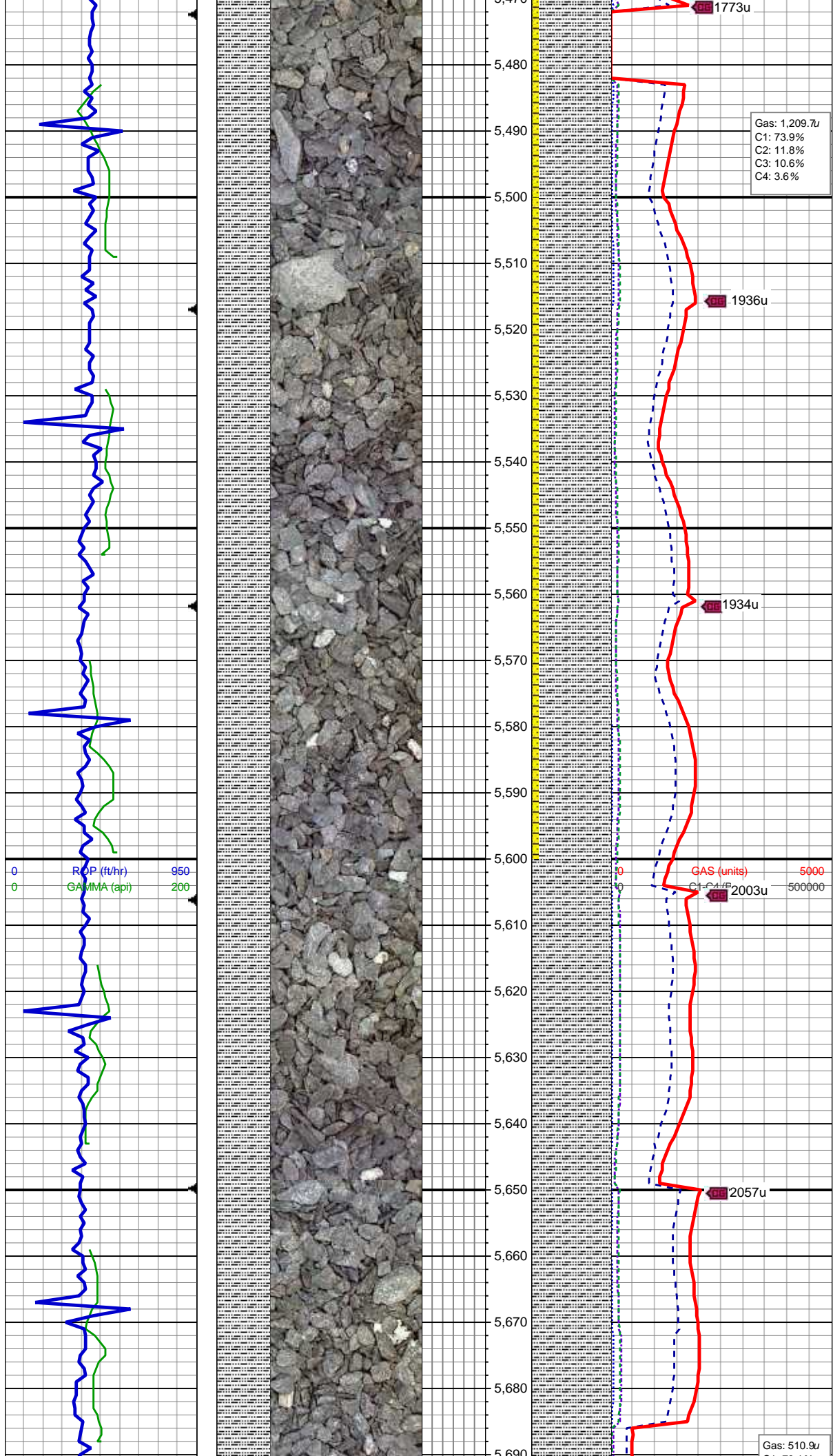
55% SLTY SH: lt-med gy, sft-sl frm, fri, sb plty, vf gr, slty tex, rthy lstr, non calc;
45% SHY SS: lt-med gy, blk, frm, v f-f gr, sb rnd, mod-w srt, cly cmt, non calc

MD: 5,198 '
TVD: 5,190.71 '
Inclination: 1.1 °
Azimuth: 2.5 °
VS: -212.33 '

WT: 9.3/ VIS: 41

65% SLTY SH: lt-med gy, sft-sl frm, fri, sb plty, vf gr, slty tex, rthy lstr, non



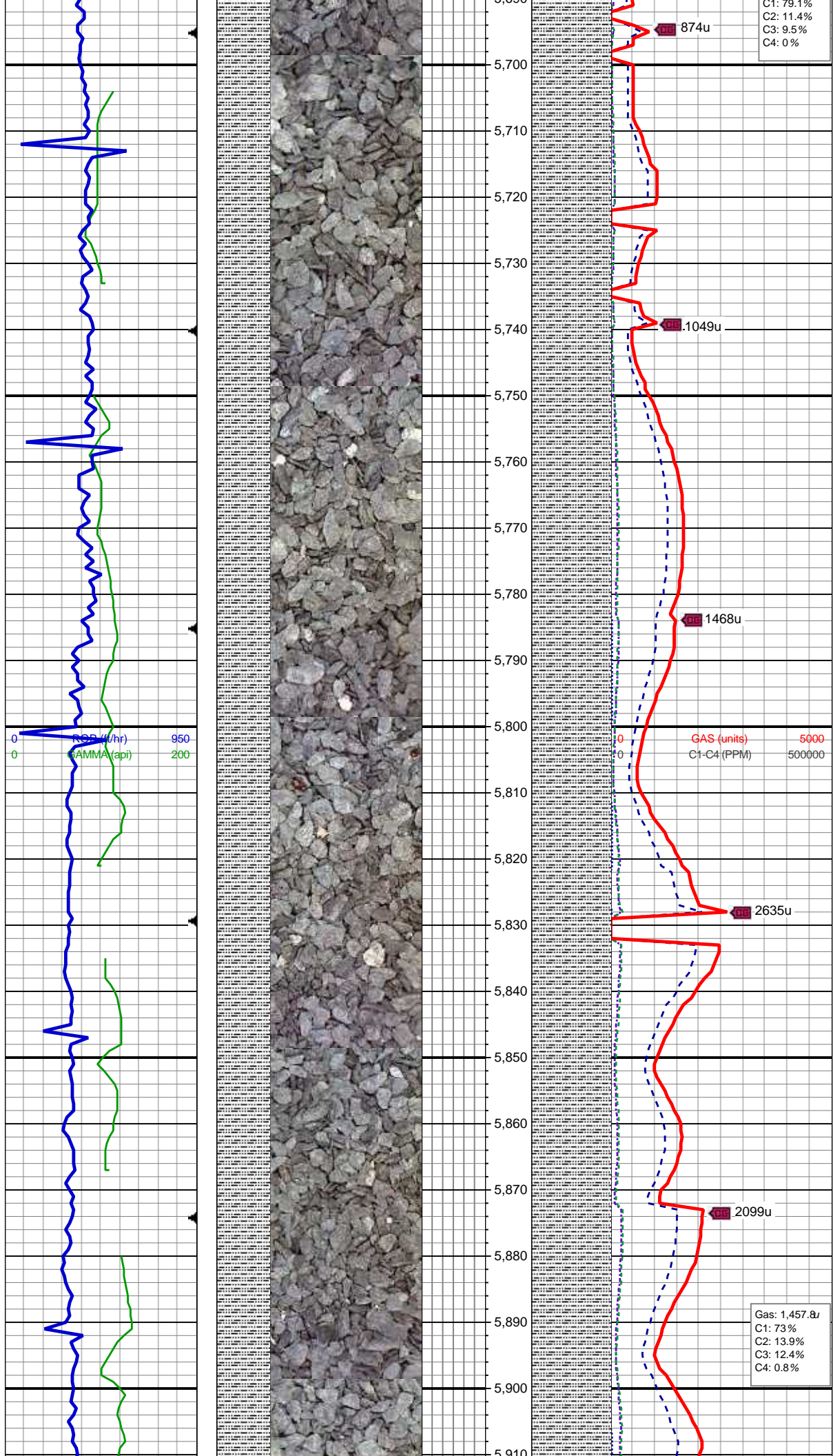


MD: 5,456
TVD: 5,548.69
Inclination: 0.4 °
Azimuth: 264.2 °
VS: -214.9

90% SLTY SH: lt-med gy, sft-sl frm, fri, sb plty, vf gr, slty tex, rthy lstr, non calc; 15% SHY SS: lt-med gy, blkly, frm, v f-f gr, sb rnd, mod-w srt, cly cmt, non calc

MD: 5,645
TVD: 5,637.69
Inclination: 0.3 °
Azimuth: 234.8 °
VS: -214.74

100% SLTY SH: lt-med gy, sft-sl frm, fri, sb plty, vf gr, slty tex, rthy lstr, non calc



C1: 79.1%
C2: 11.4%
C3: 9.5%
C4: 0%

WT: 9.25/ VIS: 42

MD: 5,735 '
TVD: 5,727.69 '
Inclination: 0.4 °
Azimuth: 200.7 °
VS: -214.31 '

100% SLTY SH: lt-med gy, sft-sl frm, fri, sb plty, vf gr, slty tex, rthy lstr, non calc

GAS (units) 5000
C1-C4 (PPM) 500000

MD: 5,824 '
TVD: 5,816.68 '
Inclination: 0.4 °
Azimuth: 211.8 °
VS: -213.76 '

100% SLTY SH: lt-med gy, sft-sl frm, fri, sb plty, vf gr, slty tex, rthy lstr, non calc

Gas: 1,457.8u
C1: 73%
C2: 13.9%
C3: 12.4%
C4: 0.8%

MD: 5,914 '
TVD: 5,906.68 '
Inclination: 0.4 °
Azimuth: 205 °
VS: -213.21 '

