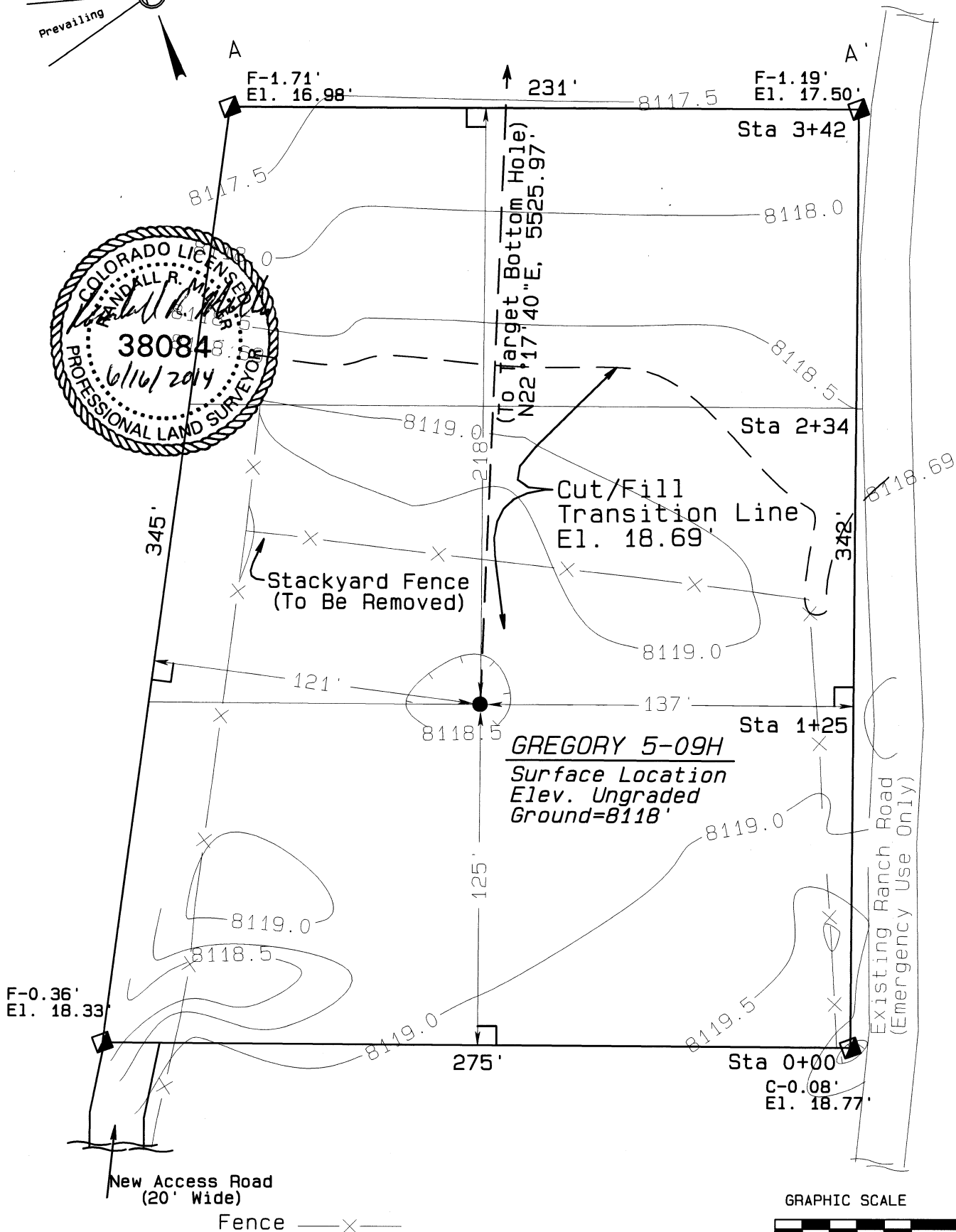
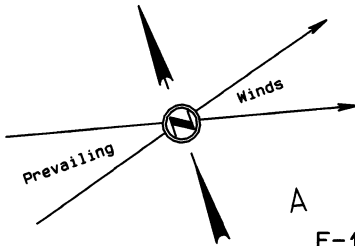


CONSTRUCTION LAYOUT
GREGORY 5-09H
SECTION 9, T7N, R80W, 6th P.M.
202' FSL, 71' FWL



Final Pad Elevation=8,118.69'

NORTH PARK ENGINEERING & CONSULTING, INC.
PO Box 395 Walden, CO 80480 970-723-3725