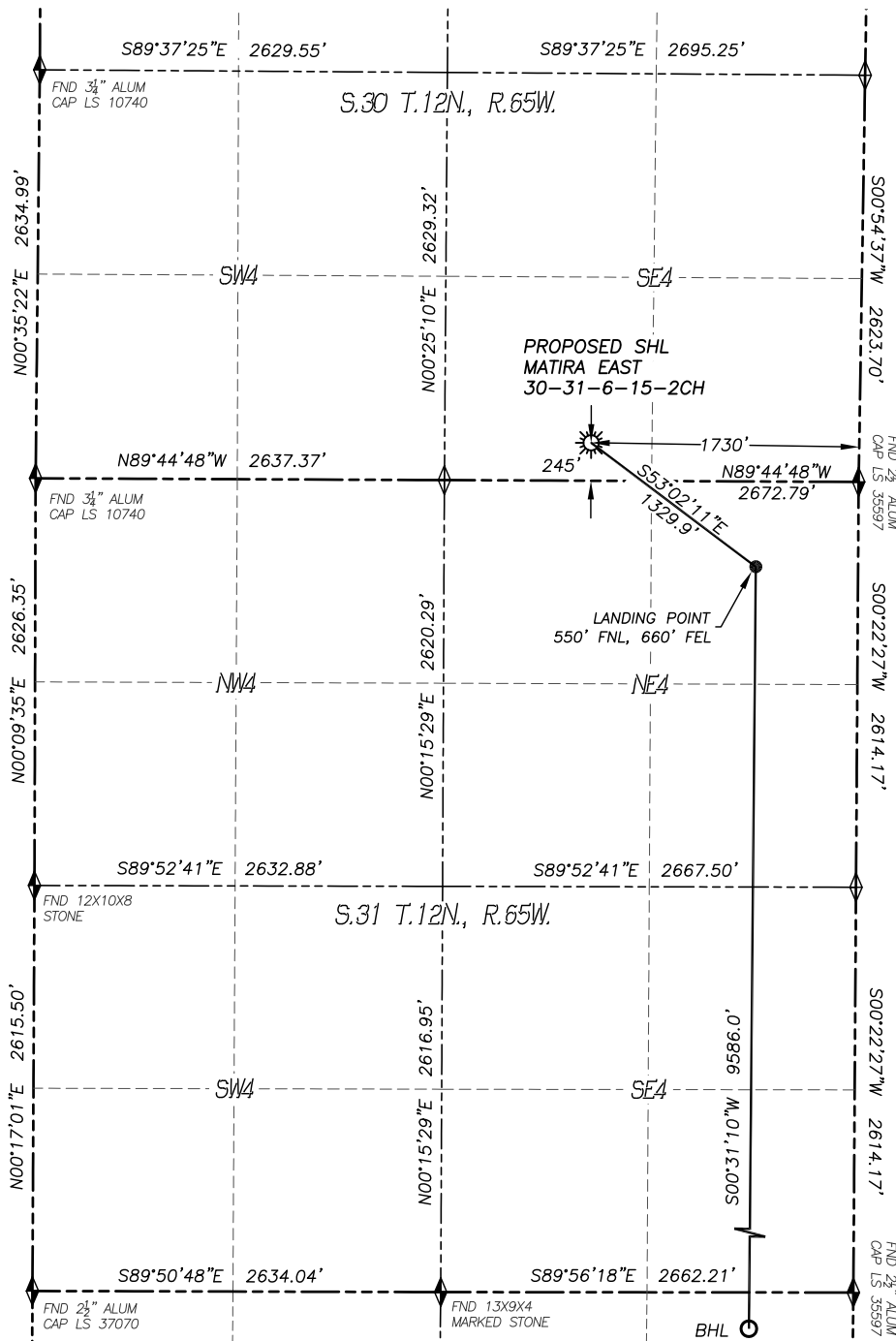


WELL LOCATION CERTIFICATE

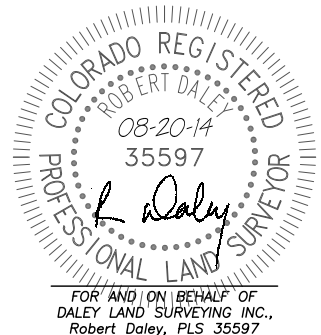
MATIRA EAST 30-31-6-15-2CH

SECTION 30, TOWNSHIP 12 NORTH, RANGE 65 WEST OF THE 6TH P.M.



IN ACCORDANCE WITH A REQUEST FROM CIRQUE RESOURCES LP., DALEY LAND SURVEYING, INC. HAS DETERMINED THE SURFACE LOCATION OF THE MATIRA EAST 30-31-6-15-2CH WELL TO BE 245' FSL, 1730' FEL, AS MEASURED AT NINETY (90) DEGREES FROM THE SECTION LINES OF SECTION 30, TOWNSHIP 12 NORTH, RANGE 65 WEST, AND THE BOTTOM HOLE LOCATION TO BE 340' FSL, 660' FEL, AS MEASURED AT NINETY (90) DEGREES FROM THE SECTION LINES OF SECTION 6, TOWNSHIP 11 NORTH, RANGE 65 WEST, OF THE 6TH PRINCIPAL MERIDIAN, WELD COUNTY, COLORADO.

I HEREBY STATE THAT THIS WELL LOCATION CERTIFICATE WAS PREPARED BY ME OR UNDER MY DIRECT SUPERVISION, THAT THE WORK WAS COMPLETED ON 8/7/2014 FOR AND ON BEHALF OF CIRQUE RESOURCES LP., AND THAT THIS MAP DOES NOT REPRESENT A BOUNDARY SURVEY, IT IS NOT A LAND SURVEY PLAT OR AN IMPROVEMENT SURVEY PLAT AND IT IS NOT TO BE RELIED UPON FOR THE ESTABLISHMENT OF FENCE, BUILDING OR OTHER FUTURE IMPROVEMENT LINES.



WELL LOCATION CERTIFICATE

MATIRA EAST 30-31-6-15-2CH

SECTION 30, TOWNSHIP 12 NORTH, RANGE 65 WEST OF THE 6TH P.M.

