

H & H Wireline Service Inc

05-067-07134

P.O. Box 899
Flora Vista NM 87415

Phone: 505-327-2364
Fax: 505-334-5438
E-mail: h-hwireline@gobrainstorm.net

Pressure Test Report

COMPANY INFORMATION

Company Name	CHEVRON
Representative	DANNY MONTOYA
Phone	
Fax	
Address	

E-Mail Address	
Service Company	H & H WIRELINE SERVICE INC.

WELL INFORMATION

Well Name	SOUTHERN UTE # 15-1
Well Location	
Field and Pool	FRUITLAND COAL
Status (Oil, Gas, Water, Injection)	GAS
Perforated Intervals	
Mid-point of Perforated Intervals (MPP)	
Drilling Rig Number	
Elevations	
Kelly Bushing (KB)	
Casing Flange (CF)	
KB-CF	
Ground Level	
Plug Back Total Depth	
Total Depth	
Production Casing	
Production Tubing	2.875

TEST INFORMATION

Type of Test	BHP SURVEY
Date(s) of Test	07/03/2014
Dead-weight Gauge Tubing Pressure	0
Dead-weight Gauge Casing Pressure	0
Shut-in Date (Duration)	
Date / Time on Bottom	07/03/2014 @ 12:12
Date / Time off Bottom	07/03/2014 @ 12:17

Probe Serial Number	
Probe Offset from End of Tool String	
Run Depth at Probe Pressure Port	2605'GL

PRESSURE TEST RESULTS

Maximum Recorded Probe Pressure	699.5 psig
Maximum Recorded Probe Temperature	113.7 deg F
Final Buildup Pressure	699.5
Gradient Survey Information	
Extrapolated Pressure to MPP	
Final Gradient at Depth	2605'GL
Job Number	



Company Name CHEVRON
Well Name SOUTHERN UTE # 15-1
Type of Test BHP SURVEY
Date(s) of Test 07/03/2014

PROBE INFORMATION

Probe Serial Number

Model

Pressure

Calibrated Pressure Range

Accuracy

Resolution

Temperature

Calibrated Temperature Range

Accuracy

Resolution

Calibration File Used for Reports

PROGRAMMING DETAILS

<u>Step</u>	<u>Sample Mode</u>	<u>Period</u>	<u>Duration</u>	<u>Comment</u>
-------------	--------------------	---------------	-----------------	----------------

Program Start Time

Program End Time

Total Samples Taken

Usage for this Test

Generic Data File Name



Company Name	CHEVRON
Well Name	SOUTHERN UTE # 15-1
Type of Test	BHP SURVEY
Date(s) of Test	07/03/2014

COMMENTS

Reported By

H & H WIRELINE SERVICE INC.

RUN BHP SURVEY TO 2605'GL, POOH RIG DOWN DRIVE TO NEXT LOCATION.



Company Name CHEVRON
Well Name SOUTHERN UTE # 15-1
Type of Test BHP SURVEY
Date(s) of Test 07/03/2014

Pressure vs. Depth

Probe Serial Number

Stop Time From	Stop Time To	Depth (ft)	Pressure (psig)	Gradient (psi/ft)	(deg F)	(deg F/ft)
11:50	11:55	0.000	-1.746	-	71.474	-
11:58	12:03	1000.000	18.558	0.0203	72.140	0.0007
12:05	12:10	2000.000	445.890	0.4273	87.188	0.0150
12:12	12:17	2605.000	699.521	0.4192	102.776	0.0258

Extrapolated to MPP:

Depth
(ft)
0.000

Pressure
(psig)

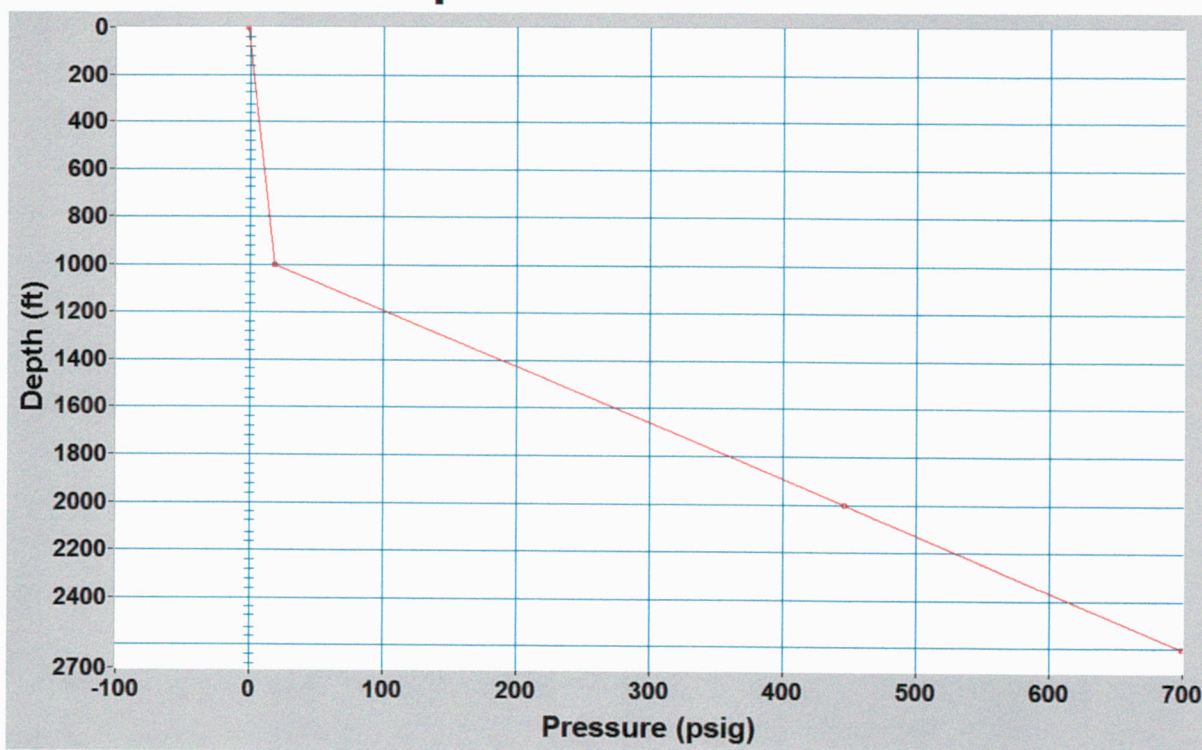
(deg F)



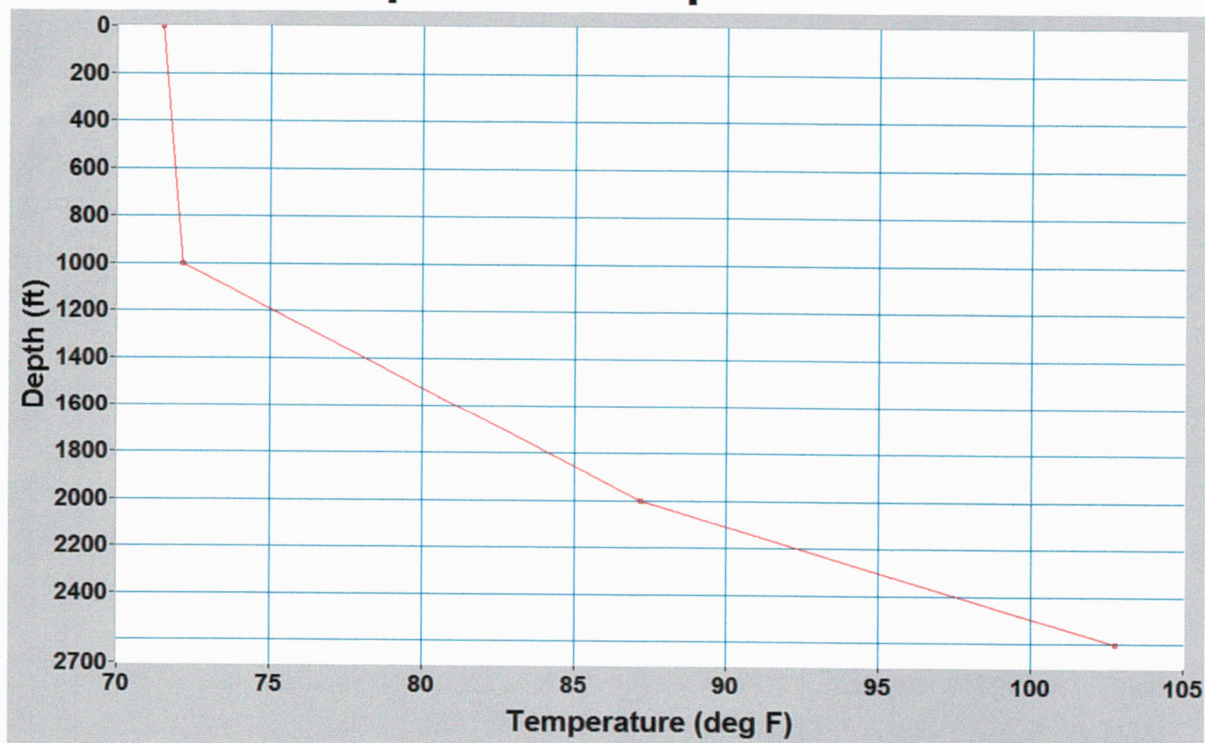
Company Name CHEVRON
Well Name SOUTHERN UTE # 15-1
Type of Test BHP SURVEY
Date(s) of Test 07/03/2014

Probe Serial Number

Depth vs. Pressure



Depth vs. Temperature

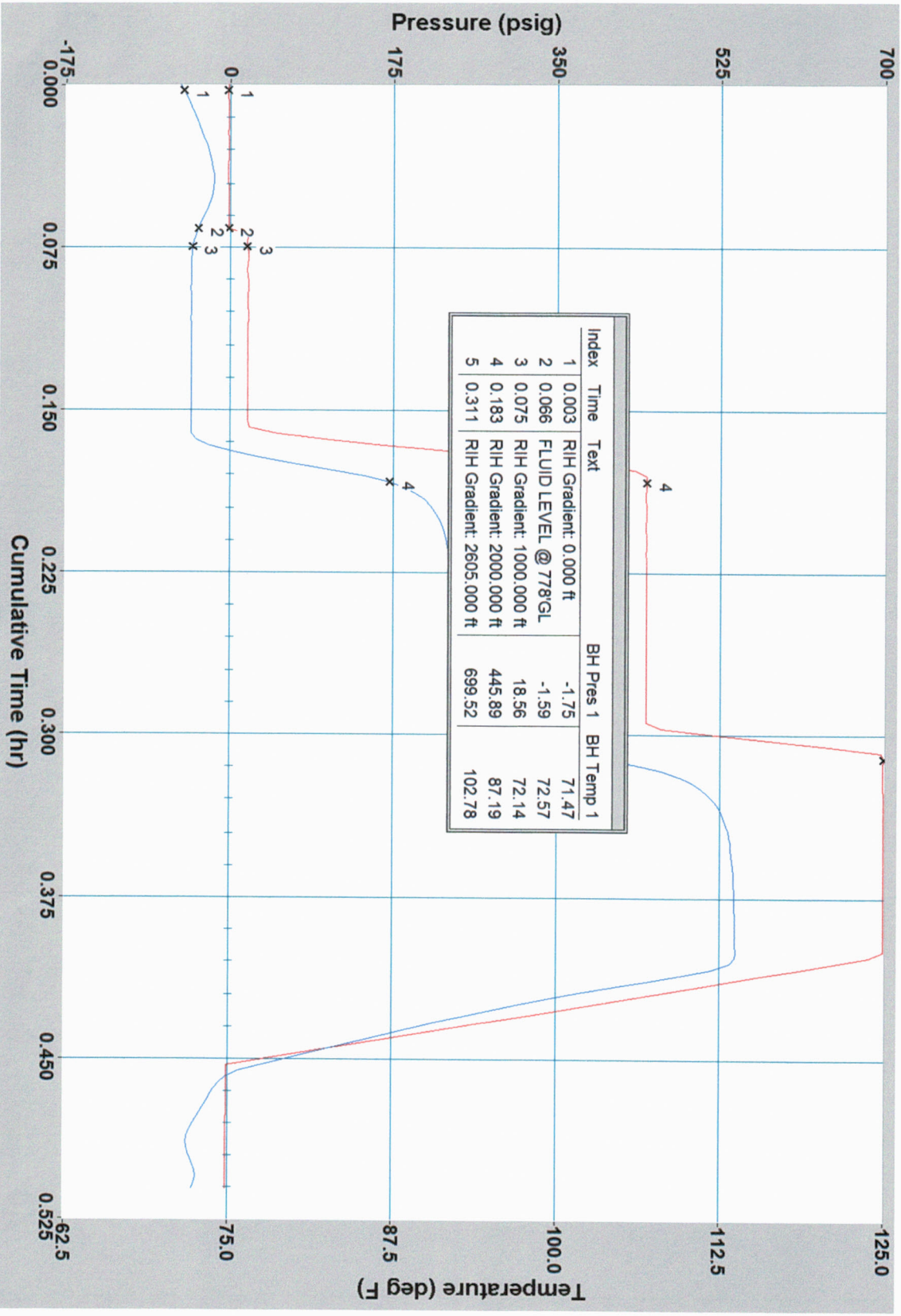




Company Name
Well Name
Type of Test
Date(s) of Test

CHEVRON
SOUTHERN UTE # 15-1
BHP SURVEY
07/03/2014

SOUTHERN UTE # 15-1



BH Pres 1
BH Temp 1



Company Name CHEVRON
Well Name SOUTHERN UTE # 15-1
Type of Test BHP SURVEY
Date(s) of Test 07/03/2014

Date	Time	Cum.Time BH1	BH Pres 1	BH Temp 1
		hr	psig	deg F
2012/06/27	11:58:00	0.0000	-1.681	71.222
RIH Gradient: 0.000 ft				
2012/06/27	11:58:09	0.0025	-1.746	71.474
2012/06/27	11:58:29	0.0081	-1.698	71.924
2012/06/27	11:58:59	0.0164	-1.697	72.518
2012/06/27	11:59:29	0.0247	-1.709	73.058
2012/06/27	11:59:59	0.0331	-1.704	73.526
2012/06/27	12:00:29	0.0414	-1.726	73.814
2012/06/27	12:00:59	0.0497	-1.704	73.688
2012/06/27	12:01:29	0.0581	-1.681	73.220
FLUID LEVEL @ 778'GL				
2012/06/27	12:01:59	0.0664	-1.593	72.572
2012/06/27	12:02:09	0.0692	19.645	72.374
RIH Gradient: 1000.000 ft				
2012/06/27	12:02:29	0.0747	18.558	72.140
2012/06/27	12:02:39	0.0775	19.679	72.086
2012/06/27	12:03:09	0.0858	18.671	72.032
2012/06/27	12:03:39	0.0942	19.721	72.014
2012/06/27	12:04:09	0.1025	19.141	72.032
2012/06/27	12:04:39	0.1108	19.173	72.032
2012/06/27	12:05:09	0.1192	19.474	72.032
2012/06/27	12:05:39	0.1275	19.107	72.032
2012/06/27	12:06:09	0.1358	19.312	72.050
2012/06/27	12:06:39	0.1442	19.291	72.068
2012/06/27	12:07:09	0.1525	19.196	72.050
2012/06/27	12:07:39	0.1608	51.997	72.068
2012/06/27	12:08:09	0.1692	242.277	75.128
2012/06/27	12:08:39	0.1775	432.864	82.598
RIH Gradient: 2000.000 ft				
2012/06/27	12:08:59	0.1831	445.890	87.188
2012/06/27	12:09:09	0.1858	445.660	88.448
2012/06/27	12:09:39	0.1942	445.349	90.284
2012/06/27	12:10:09	0.2025	444.951	91.148
2012/06/27	12:10:39	0.2108	445.634	91.562
2012/06/27	12:11:09	0.2192	445.254	91.778
2012/06/27	12:11:39	0.2275	445.306	91.922
2012/06/27	12:12:09	0.2358	445.457	91.958
2012/06/27	12:12:39	0.2442	445.254	92.012
2012/06/27	12:13:09	0.2525	445.389	92.048
2012/06/27	12:13:29	0.2581	445.309	92.066
2012/06/27	12:13:59	0.2664	445.372	92.084
2012/06/27	12:14:29	0.2747	445.369	92.084
2012/06/27	12:14:59	0.2831	445.334	92.084
2012/06/27	12:15:29	0.2914	445.375	92.120
2012/06/27	12:15:59	0.2997	512.710	92.390
2012/06/27	12:16:29	0.3081	696.429	98.852
RIH Gradient: 2605.000 ft				
2012/06/27	12:16:39	0.3108	699.521	102.776
2012/06/27	12:16:59	0.3164	698.468	107.978
2012/06/27	12:17:39	0.3275	698.793	111.542
2012/06/27	12:18:09	0.3358	698.931	112.604
2012/06/27	12:18:39	0.3442	699.069	113.090
2012/06/27	12:19:09	0.3525	699.043	113.306
2012/06/27	12:19:39	0.3608	699.083	113.468

Date	Time	Cum.Time BH1	BH Pres 1	BH Temp 1
		hr	psig	deg F
2012/06/27	12:20:09	0.3692	699.107	113.540
2012/06/27	12:20:39	0.3775	699.105	113.612
2012/06/27	12:21:09	0.3858	699.107	113.630
2012/06/27	12:21:39	0.3942	699.094	113.666
2012/06/27	12:22:09	0.4025	683.541	113.666
2012/06/27	12:22:39	0.4108	573.573	109.760
2012/06/27	12:23:09	0.4192	463.045	101.768
2012/06/27	12:23:39	0.4275	349.911	94.802
2012/06/27	12:24:09	0.4358	234.216	88.808
2012/06/27	12:24:39	0.4442	115.708	83.084
2012/06/27	12:25:09	0.4525	-1.498	77.486
2012/06/27	12:25:39	0.4608	-1.572	74.300
2012/06/27	12:26:09	0.4692	-1.645	73.400
2012/06/27	12:26:39	0.4775	-1.738	72.590
2012/06/27	12:27:09	0.4858	-1.772	71.870
2012/06/27	12:27:39	0.4942	-1.774	72.014
2012/06/27	12:28:09	0.5025	-1.740	72.518