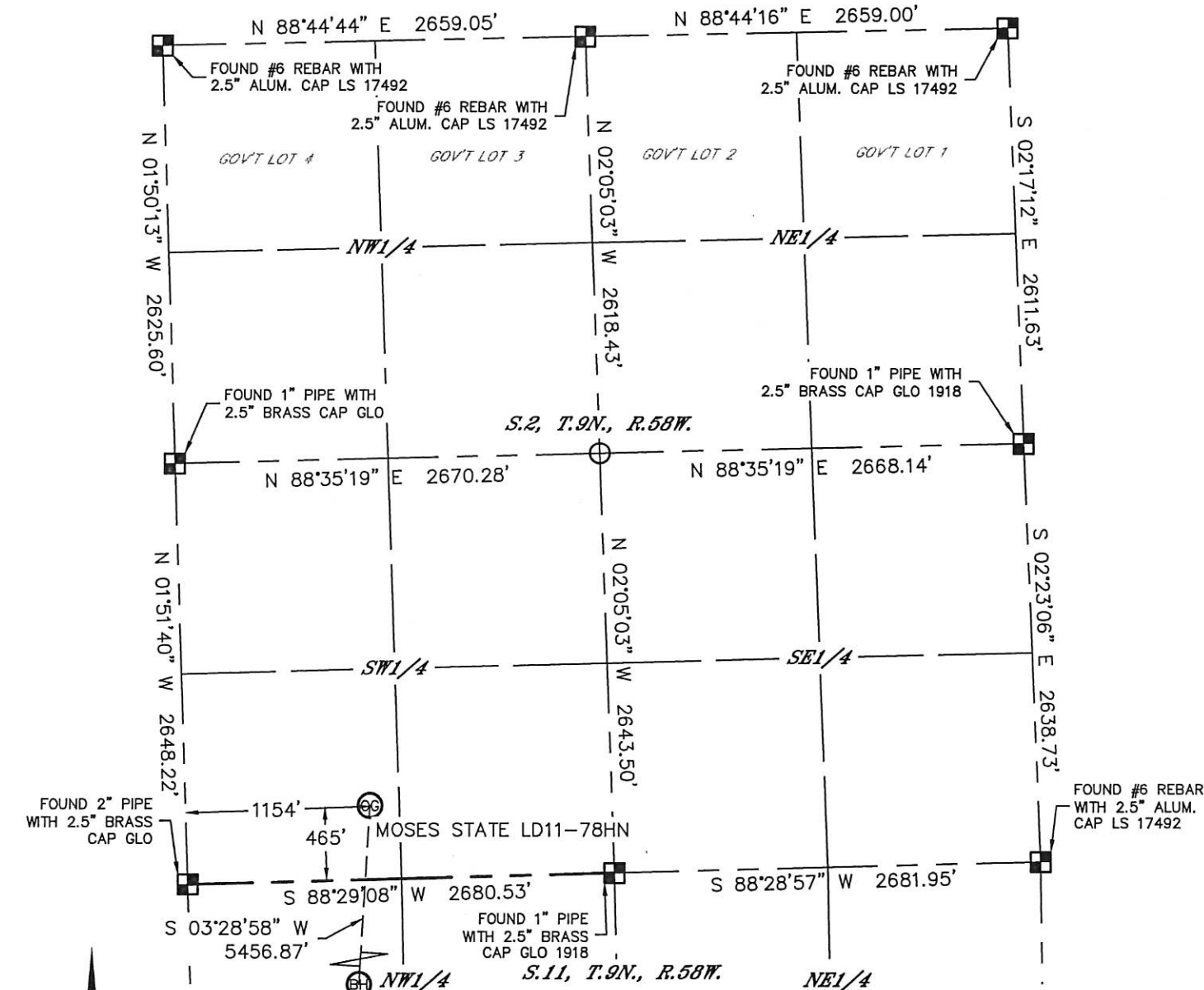


WELL LOCATION CERTIFICATE

THIS MAP DOES NOT REPRESENT A BOUNDARY SURVEY

SECTION: 2
TOWNSHIP: 9N
RANGE: 58W





In accordance with a request from Cody Ball with Noble Energy Inc.

Lat40', Inc. has determined the surface location of the MOSES STATE LD11-78HN to be 465' from the SOUTH line and 1154' from the WEST line as measured at right angles from the section lines of Section 2, Township 9 North, Range 58 West and the bottom hole to be 330' from the SOUTH line and 675' from the WEST line as measured at right angles from the section lines of Section 11, Township 9 North, Range 58 West of the Sixth Principal Meridian, County of Weld, State of Colorado.

I hereby state that this Well Location Certificate was prepared by me, or under my direct supervision, that the fieldwork was completed on 11/13/2013, for and on behalf of Noble Energy Inc.. That this is not a Land Survey Plat or an Improvement Survey Plat, and that it is not to be relied upon for establishment of fence, building, or other future improvement lines.

NOTE:

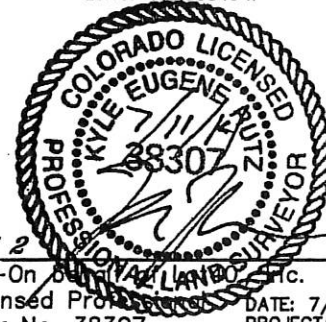
- 1) Bearings shown are Grid Bearings of the Colorado State Plane Coordinate System, North Zone, North American Datum 1983/2007. The lineal dimensions as contained herein are based upon the "U.S. Survey Foot."
- 2) Ground elevations are based on an observed GPS elevation (NAVD 1988 DATUM).
- 3) IMPROVEMENTS: See LOCATION DRAWING for all visible improvements within 500' of disturbed area.
- 4) SURFACE USE: RANGELAND
- 5) INSTRUMENT OPERATOR: BRIAN ROTTINGHAUS
- 6) NEAREST EXISTING WELL: NO EX. WELLS IN SECTION
- NEAREST CULTURAL ITEMS:
- BUILDING: 2809' SW
- BUILDING UNIT: 2809' SW
- HIGH OCCUPANCY BUILDING UNIT: 5280'+
- DESIGNATED OUTSIDE ACTIVITY AREA: 5280'+
- PUBLIC ROAD: 5280'+
- ABOVEGROUND UTILITY: 2291' SW
- RAILROAD: 5280'+
- PROPERTY LINE: 465' S
- LEGEND
-  = ALIQUOT MONUMENT AS DE
-  = CALCULATED POSITION

SURFACE LOCATION

LAT: 40.77456N
LONG: 103.83683W
PDOP: 1.7
ELEV: 4748'
1/4,1/4: SW1/4SW1/4

BOTTOM HOLE

LAT: 40.75963N
LONG: 103.83840W



SHEET 1 OF 2

Kyle E. Rutz—On behalf of **W. A. LAND INC.**
Colorado Licensed Professional Surveyor
Land Surveyor No. 38307

DATE: _____
PROJECT: _____

DATE: 7/11/2014
PROJECT#: 2013115

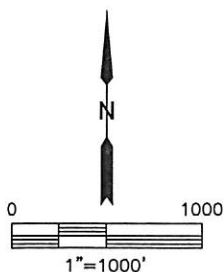
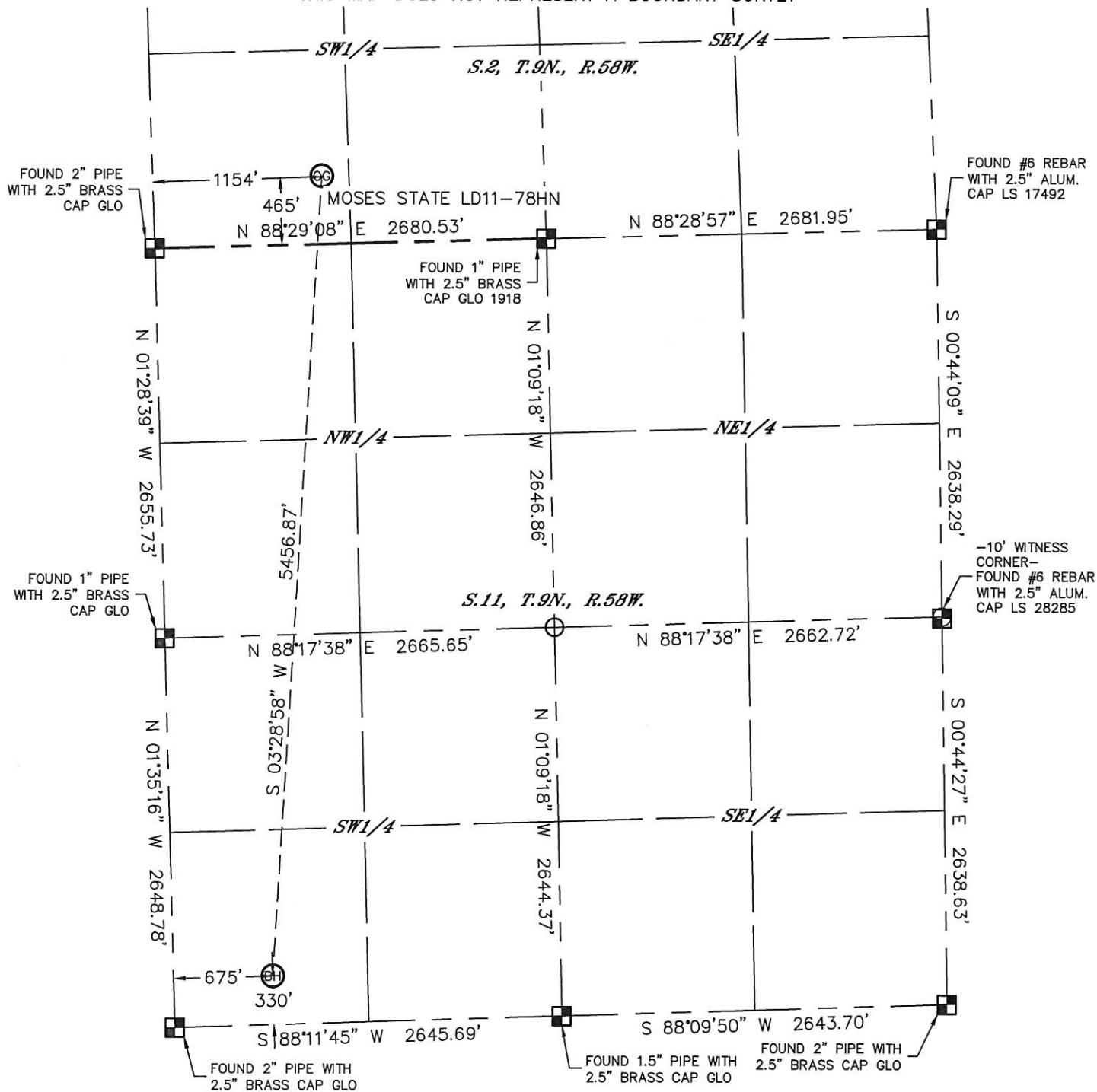


Lat40°, Inc. 1635 Foxtrail Drive, Suite 325 Loveland, CO 970-776-3321

WELL LOCATION CERTIFICATE

SECTION: 2
TOWNSHIP: 9N
RANGE: 58W

THIS MAP DOES NOT REPRESENT A BOUNDARY SURVEY



LEGEND
■ = ALIQUOT MONUMENT AS DESCRIBED
○ = CALCULATED POSITION



SHEET 2 OF 2
Kyle E. Rutz-On
Colorado Licensed Professional Land Surveyor No. 38307
DATE: 7/11/2014
PROJECT#: 2013115

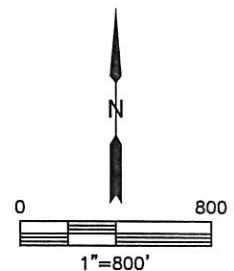
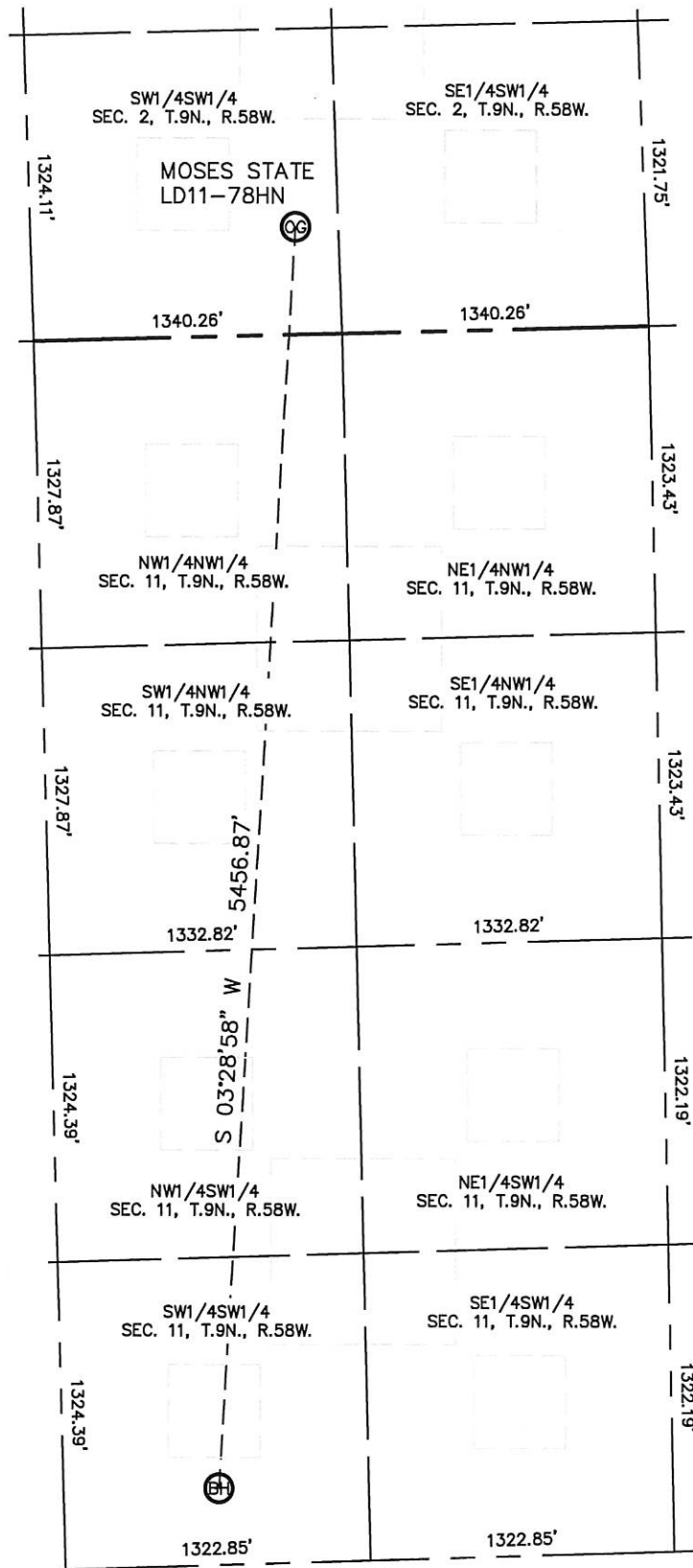


Lat40°, Inc. 1635 Foxtrail Drive, Suite 325 Loveland, CO 970-776-3321

SITE SKETCH

MOSES STATE LD11-78HN

SECTION: 2
TOWNSHIP: 9N
RANGE: 58W



NOTE: NO EXISTING WELLS ADJACENT TO PROPOSED WELL BORE.

DATE: 7/11/2014
PROJECT#: 2013115