

WPX Energy Rocky Mountain, LLC

Well location, GM 311-28, located as shown in LOT 4 of Section 28, T6S, R96W, 6th P.M., Garfield County, Colorado.

### BASIS OF ELEVATION

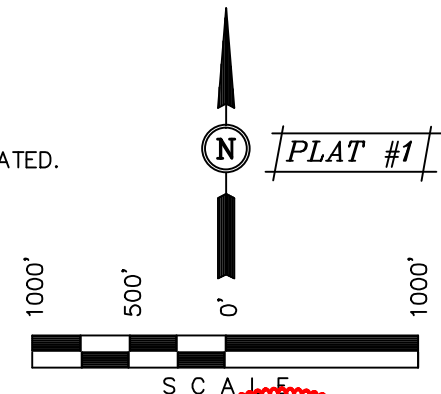
SPOT ELEVATION AT THE NORTHWEST CORNER OF SECTION 30, T5S, R95W, 6th P.M. TAKEN FROM THE FORKED GULCH QUADRANGLE, COLORADO, GARFIELD COUNTY, 7.5 MINUTE SERIES (TOPOGRAPHICAL MAP) PUBLISHED BY THE UNITED STATES DEPARTMENT OF THE INTERIOR, GEOLOGICAL SURVEY. SAID ELEVATION IS MARKED AS BEING 5966 FEET.

## BASIS OF BEARINGS

BASIS OF BEARINGS IS A G.P.S. OBSERVATION.

LEGEND:

- L = 90° SYMBOL  
 ● = PROPOSED WELL HEAD.  
 ▲ = SECTION CORNERS LOCATED.  
 △ = SECTION CORNERS  
 RE-ESTABLISHED.  
 (Not Set on Ground.)



## CERTIFICATE

THIS IS TO CERTIFY THAT THE ABOVE PLAT WAS PREPARED AND  
LOCATION AS SHOWN WAS STAKED ON THE GROUND FROM FIELD NOTES  
OF ACTUAL SURVEYS MADE BY ME OR UNDER MY SUPERVISION AND THAT  
THE SAME ARE TRUE AND CORRECT TO THE BEST OF MY KNOWLEDGE AND  
BELIEF.

REGISTERED LAND SURVEYOR  
REGISTRATION NO. 18130  
STATE OF COLORADO

REVISÉD: 08-07-14

# UINTAH ENGINEERING & LAND SURVEYING

85 SOUTH 200 EAST - VERNAL, UTAH 84078

(435) 789-1017

LINE TABLE		
LINE	DIRECTION	LENGTH
L1	S89°56'58"W	158.40'
L2	S89°56'58"W	16.50'
L3	S89°54'43"W	1300.69'

NAD 83 (TARGET BOTTOM HOLE)	NAD 83 (SURFACE LOCATION)
LATITUDE = 39°30'05.84" (39.501622)	LATITUDE = 39°29'56.06" (39.498906)
LONGITUDE = 108°07'08.31" (108.118975)	LONGITUDE = 108°07'09.92" (108.119422)
STATE PLANE--(COLO. CENTRAL--NAD 83)	STATE PLANE--(COLO. CENTRAL--NAD 83)
N = 1618246.60	N = 1617260.48
E = 2261085.59	E = 2260930.81

SCALE 1" = 1000'	DATE SURVEYED: 04-13-12	DATE DRAWN: 07-02-13
PARTY B.B. C.C. M.D.	REFERENCES G.L.O. PLAT	
WEATHER WARM	FILE WPX Energy Rocky Mountain, LLC	