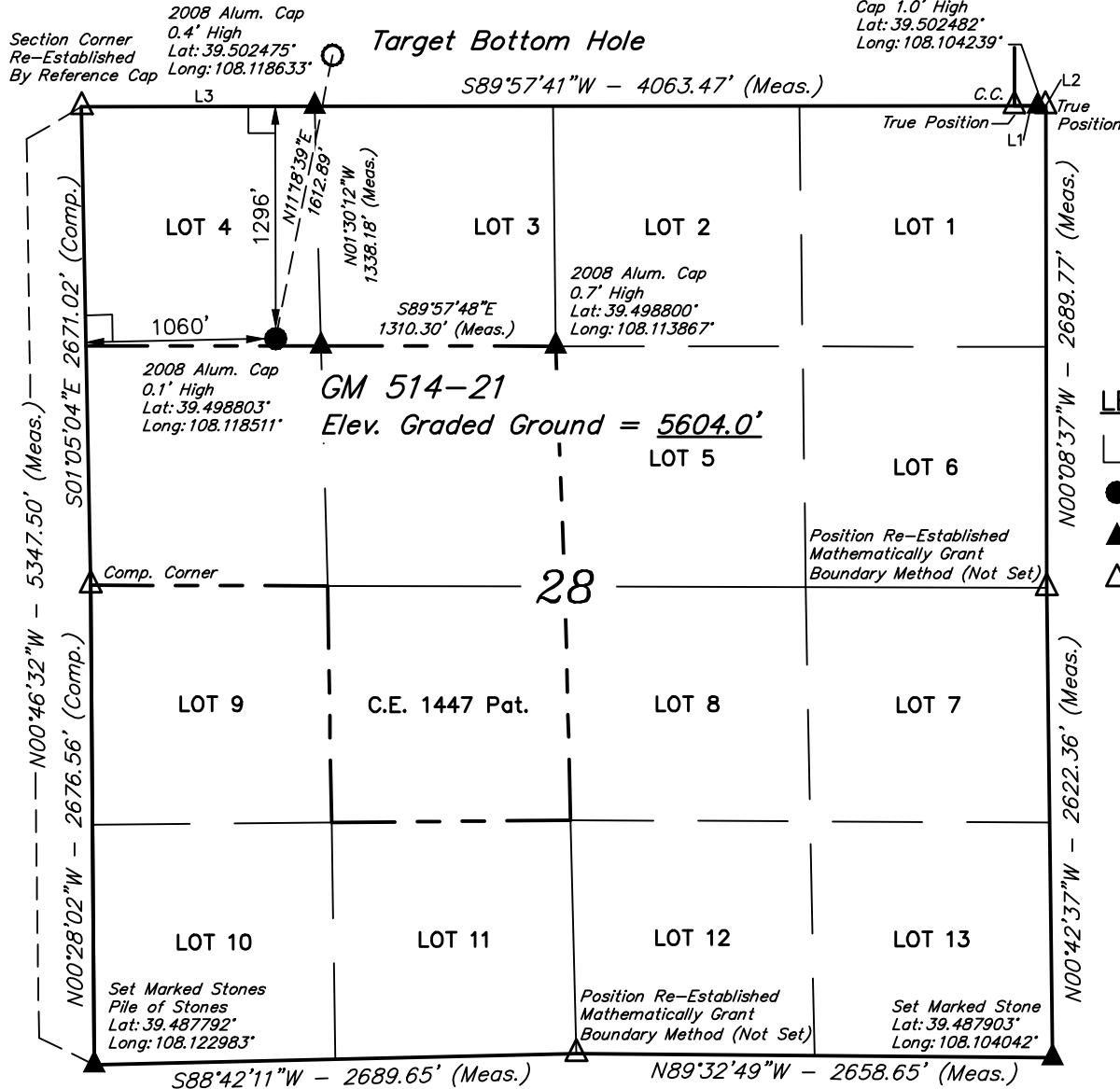


T6S, R96W, 6th P.M.

WPX Energy Rocky Mountain, LLC

Well location, GM 514-21 (SURFACE LOCATION), located as shown in LOT 4 of Section 28, T6S, R96W, 6th P.M., Garfield County, Colorado.



BASIS OF ELEVATION

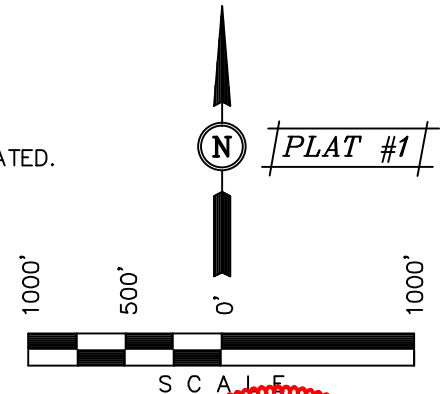
SPOT ELEVATION AT THE NORTHWEST CORNER OF SECTION 30, T5S, R95W, 6th P.M. TAKEN FROM THE FORKED GULCH QUADRANGLE, COLORADO, GARFIELD COUNTY, 7.5 MINUTE SERIES (TOPOGRAPHICAL MAP) PUBLISHED BY THE UNITED STATES DEPARTMENT OF THE INTERIOR, GEOLOGICAL SURVEY. SAID ELEVATION IS MARKED AS BEING 5966 FEET.

BASIS OF BEARINGS

BASIS OF BEARINGS IS A G.P.S. OBSERVATION.

LEGEND:

- └ = 90° SYMBOL
- = PROPOSED WELL HEAD.
- ▲ = SECTION CORNERS LOCATED.
- △ = SECTION CORNERS RE-ESTABLISHED. (Not Set on Ground.)



CERTIFICATE

THIS IS TO CERTIFY THAT THE ABOVE PLAT WAS PREPARED AND LOCATION AS SHOWN WAS STAKED ON THE GROUND FROM FIELD NOTES OF ACTUAL SURVEYS MADE BY ME OR UNDER MY SUPERVISION AND THAT THE SAME ARE TRUE AND CORRECT TO THE BEST OF MY KNOWLEDGE AND BELIEF.

REGISTERED LAND SURVEYOR
REGISTRATION NO. 14410
STATE OF COLORADO

REVISED: 08-07-14

UINTAH ENGINEERING & LAND SURVEYING
85 SOUTH 200 EAST - VERNAL, UTAH 84078
(435) 789-1017

LINE TABLE		
LINE	DIRECTION	LENGTH
L1	S89°56'58"W	158.40'
L2	S89°56'58"W	16.50'
L3	S89°54'43"W	1300.69'

NOTE:
THE PROPOSED TARGET BOTTOM HOLE FOR THIS WELL IS LOCATED IN LOT 5 OF SECTION 21, T6S, R96W, 6th P.M. AT 285' FSL 1390' FWL. IT BEARS N11°18'39"E 1612.89' FROM THE PROPOSED WELL HEAD.

PDOP = 1.8

NAD 83 (SURFACE LOCATION)
LATITUDE = 39°29'56.10" (39.498917)
LONGITUDE = 108°07'09.84" (108.119400)
STATE PLANE-(COLO. CENTRAL-NAD 83)
N = 1617264.87
E = 2260936.89

SCALE 1" = 1000'	DATE SURVEYED: 04-13-12	DATE DRAWN: 07-02-13
PARTY B.B. C.C. M.D.	REFERENCES G.L.O. PLAT	
WEATHER WARM	FILE WPX Energy Rocky Mountain, LLC	

NE Cor Sec 20
Pile of Stones
Lat: 39.517033°
Long: 108.123377°

T6S, R96W, 6th P.M.

WPX Energy Rocky Mountain, LLC

Well location, GM 514-21 (TARGET BOTTOM HOLE),
located as shown in LOT 5 of Section 21, T6S,
R96W, 6th P.M., Garfield County, Colorado.

BASIS OF ELEVATION

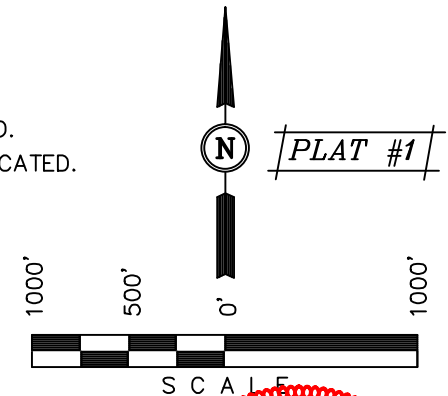
SPOT ELEVATION AT THE NORTHWEST CORNER OF SECTION 30, T5S, R95W, 6th P.M. TAKEN FROM THE FORKED GULCH QUADRANGLE, COLORADO, GARFIELD COUNTY, 7.5 MINUTE SERIES (TOPOGRAPHICAL MAP) PUBLISHED BY THE UNITED STATES DEPARTMENT OF THE INTERIOR, GEOLOGICAL SURVEY. SAID ELEVATION IS MARKED AS BEING 5966 FEET.

BASIS OF BEARINGS

BASIS OF BEARINGS IS A G.P.S. OBSERVATION.

LEGEND:

- └ = 90° SYMBOL
- = PROPOSED WELL HEAD.
- ▲ = SECTION CORNERS LOCATED.
- △ = SECTION CORNERS RE-ESTABLISHED.
(Not Set on Ground.)



CERTIFICATE

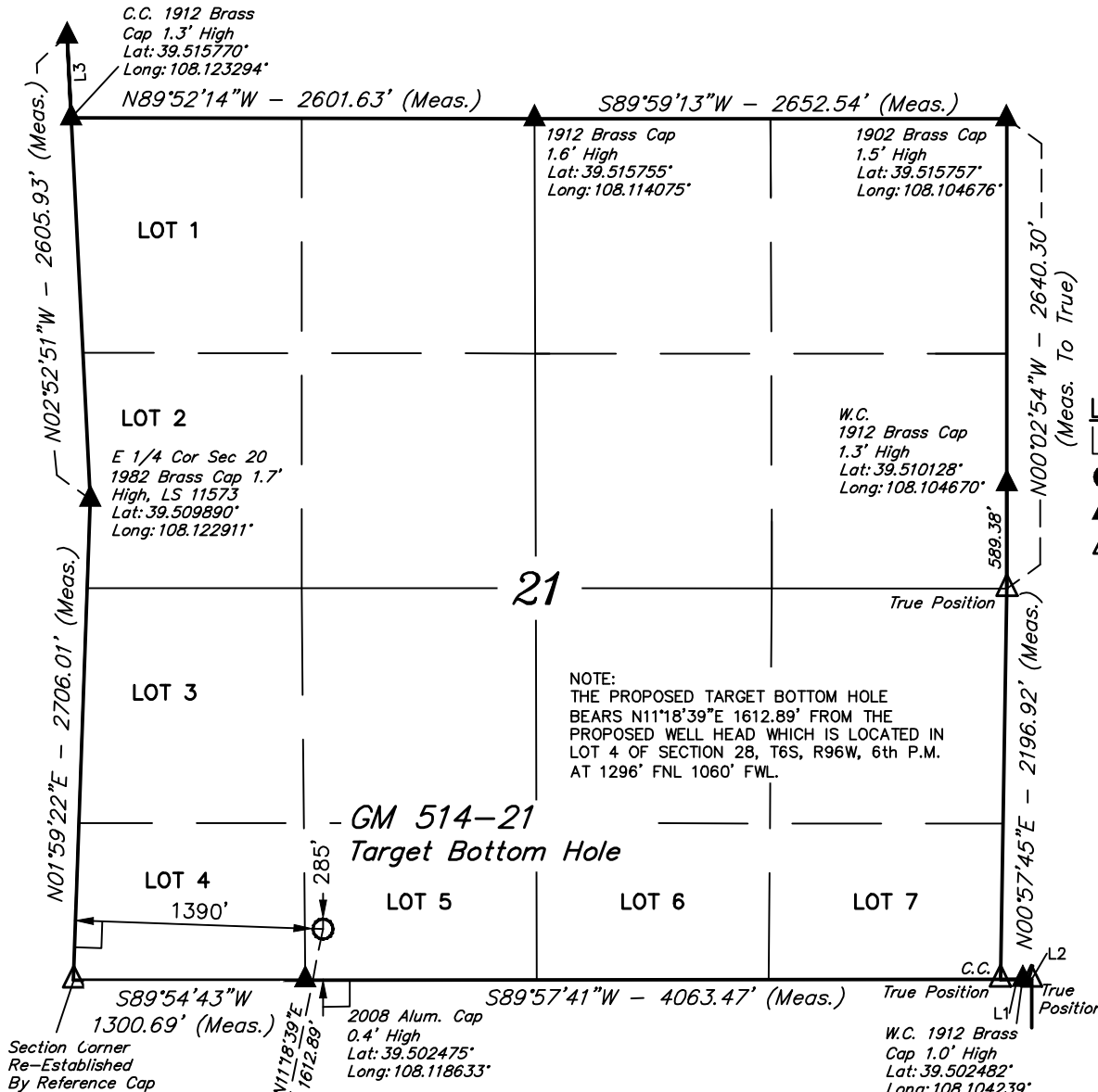
THIS IS TO CERTIFY THAT THE ABOVE PLAT WAS PREPARED AND LOCATION AS SHOWN WAS STAKED ON THE GROUND FROM FIELD NOTES OF ACTUAL SURVEYS MADE BY ME OR UNDER MY SUPERVISION AND THAT THE SAME ARE TRUE AND CORRECT TO THE BEST OF MY KNOWLEDGE AND BELIEF.

REGISTERED LAND SURVEYOR
REGISTRATION NO. 14430
STATE OF COLORADO 08-07-14

REVISED: 08-07-14

UINTAH ENGINEERING & LAND SURVEYING
85 SOUTH 200 EAST - VERNAL, UTAH 84078
(435) 789-1017

SCALE 1" = 1000'	DATE SURVEYED: 04-13-12	DATE DRAWN: 07-02-13
PARTY B.B. C.C. M.D.	REFERENCES G.L.O. PLAT	
WEATHER WARM	FILE WPX Energy Rocky Mountain, LLC	



LINE TABLE

LINE	DIRECTION	LENGTH
L1	S89°56'58\"W	158.40'
L2	S89°56'58\"W	16.50'
L3	N02°53'50\"W	460.83'

NAD 83 (TARGET BOTTOM HOLE)
LATITUDE = 39°30'11.73\" (39.503258)
LONGITUDE = 108°07'05.81\" (108.118281)
STATE PLANE-(COLO. CENTRAL-NAD 83)
N = 1618836.20
E = 2261298.39

Surface Location