

# NOBLE ENERGY INC.

KRAFT 34-14

SWSE 14-1S-65W

1202' FSL & 1650' FEL

Weld County, Colorado

Wattenberg

## CURRENT WELLBORE SCHEMATIC with PROPOSED P&A

9/3/2014

API: 05-001-08879

COGCC #

GL Elev: 5125'

KB Elev: 5135'

Spud Date: 10/7/1988

### Surface Casing :

8 5/8" 24# @ 167'

Cement: 110 sx

TOC: Surface

Production Casing Cement from 1117' - 1300'  
(Run CBL to determine exact depths)

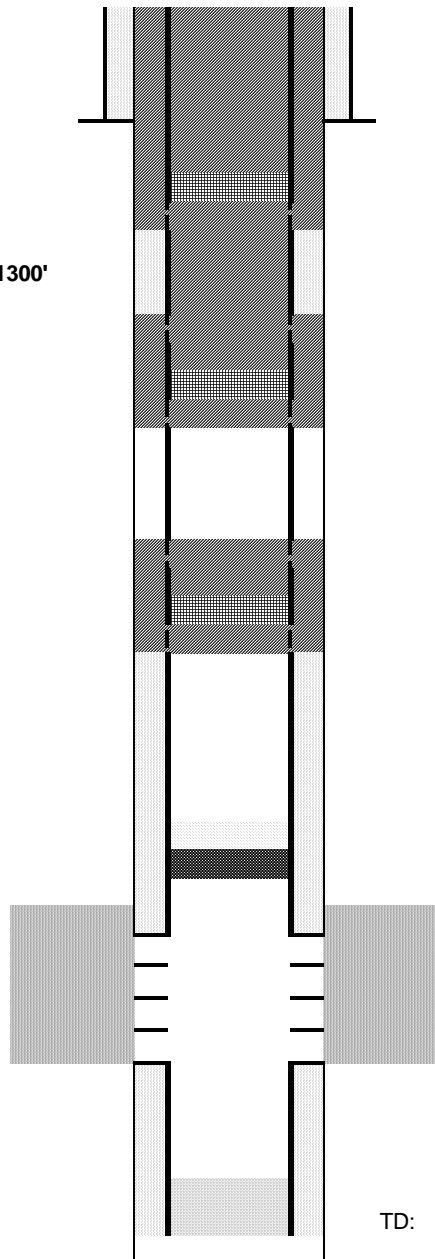
TOC @ 7203'

### Production Casing :

4 1/2" 11.6# @ 7996'

Cement: 275 sx

TD: 10/15/1988



Cut surface casing off 6'-8' below surface.

Will bring cement to surface.

Pump 330 sx through and 80 sx on top

Set CICR @ 1007'

Perforate 4 1/2" casing @ 1107' (10' above TOC)

Perforate 4 1/2" casing @ 1310' (10' below BOC)

Pump 80 sx through and 25 sx on top

Set CICR @ 1450'

Perforate 4 1/2" casing @ 1550'

Perforate 4 1/2" casing @ 6700'

Pump 150 sx through and 30 sx on top

Set CICR @ 7100'

Perforate 4 1/2" casing @ 7200'

CIBP @ 7817' w/ 2 sx cement on top

J Sand Perforations 7867' - 7912'

TD: 8000'