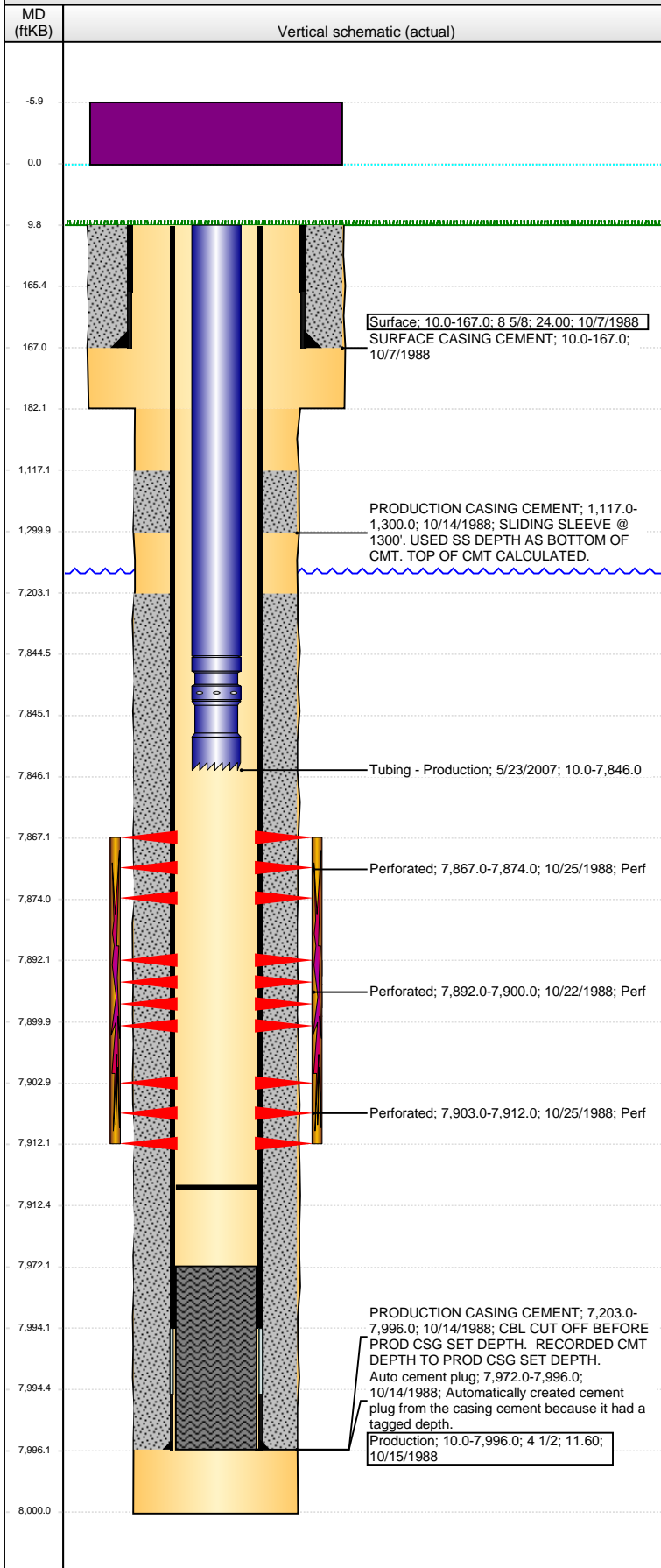


**Well Name: KRAFT 34-14**

VERTICAL - ORIGINAL HOLE, 9/3/2014 10:00:55 AM



## Well Header

API	Business Unit	District	Well Config
05-001-08879	DJ BASIN	15	VERTICAL
Original KB Elevation (ft)	KB - GL / MSL (ftKB)	Spud Date	P & A Date
5,135.00	10.00	10/7/1988	

## Comment

DISC: PERFS - DRL RPTS 7892'-7900', ST RPT 7867'-7912'.

SLIDING SLEEVE @ 1300'. TOP OF CMT CALCULATED.

## Directions To Well

## Congressional Location

Quarter 1	Quarter 2	Quarter 3	Quarter 4	Section	Township	Twtnshp N...	Range	Rng E/W Dir
	SW	SE		14	1	S	65	W

## Bottom Hole Location

North-South Distance (ft)	From N or S Line	East-West Distance (ft)	From E or W Line

## Plug Back Total Depths

Date	Depth (ftKB)	Method	Com
10/19/1988	7,972.0	CASED HOLE LOG	DEPTH LOGGER ON CBL
5/23/2007	7,912.3	TAG	

## Wellbore Sections

Section Des	Size (in)	Act Top, MD (ftKB)	Act Btm, MD (ftKB)
SURFACE	12 1/4	10.0	182.0
PRODUCTION	7 7/8	182.0	8,000.0

## Zone Statuses

Zone Name	Status Date	Status	Job
J SAND	10/30/1988	PR	DRILLING/COMPLETION - ORIGINAL, 10/7/1988 00:00

## Casing Strings

### Surface, 167.0ftKB

Casing Description	Run Date	OD (in)	Wt/Len (l...)	Grade	Top, MD (ft...)	MD (ftKB)
Surface	10/7/1988	8 5/8	24.00		10.0	167.0

### Production, 7,996.0ftKB

Casing Description	Run Date	OD (in)	Wt/Len (l...)	Grade	Top, MD (ft...)	MD (ftKB)
Production	10/15/1988	4 1/2	11.60		10.0	7,996.0

## Cement

Description	Top Depth (ftKB)	Bottom Depth (ftKB)
SURFACE CASING CEMENT	10.0	167.0
PRODUCTION CASING CEMENT	1,117.0	1,300.0
PRODUCTION CASING CEMENT	7,203.0	7,996.0

## Tubing Components

Item Des	OD (in)	Wt (lb/ft)	Grade	Jts	Len (ft)	Btm (ftKB)	Btm (TVD) (ftKB)
EUE 8rd Tubing	2 3/8	4.70	J-55	253	7,834.50	7,844.5	
Seating Nipple	2 3/8	1.10		1	0.50	7,845.0	
Notched collar	2 3/8			1	1.00	7,846.0	

## Perforation Data

Zone	Bnch/St g	Entered Shot Total	Top (ftKB)	Btm (ftKB)	Date
J SAND, ORIGINAL HOLE		14	7,867.00	7,874.00	10/25/1988
J SAND, ORIGINAL HOLE		16	7,892.00	7,900.00	10/22/1988
J SAND, ORIGINAL HOLE		18	7,903.00	7,912.00	10/25/1988

## Stimulations & Treatments

Date	Zone	Primary Job Type
10/23/1988	J SAND, ORIGINAL HOLE	DRILLING/COMPLETION - ORIGINAL
Technical Result	Tech Result Details	Tech Result Note

## Comment

Date	Zone	Primary Job Type
10/27/1988	J SAND, ORIGINAL HOLE	DRILLING/COMPLETION - ORIGINAL
Technical Result	Tech Result Details	Tech Result Note

## Comment

## Other In Hole

Run Date	Des	OD (in)	Top (ftKB)	Btm (ftKB)

**Well Name: KRAFT 34-14**

VERTICAL - ORIGINAL HOLE, 9/3/2014 10:00:57 AM

## Logs

