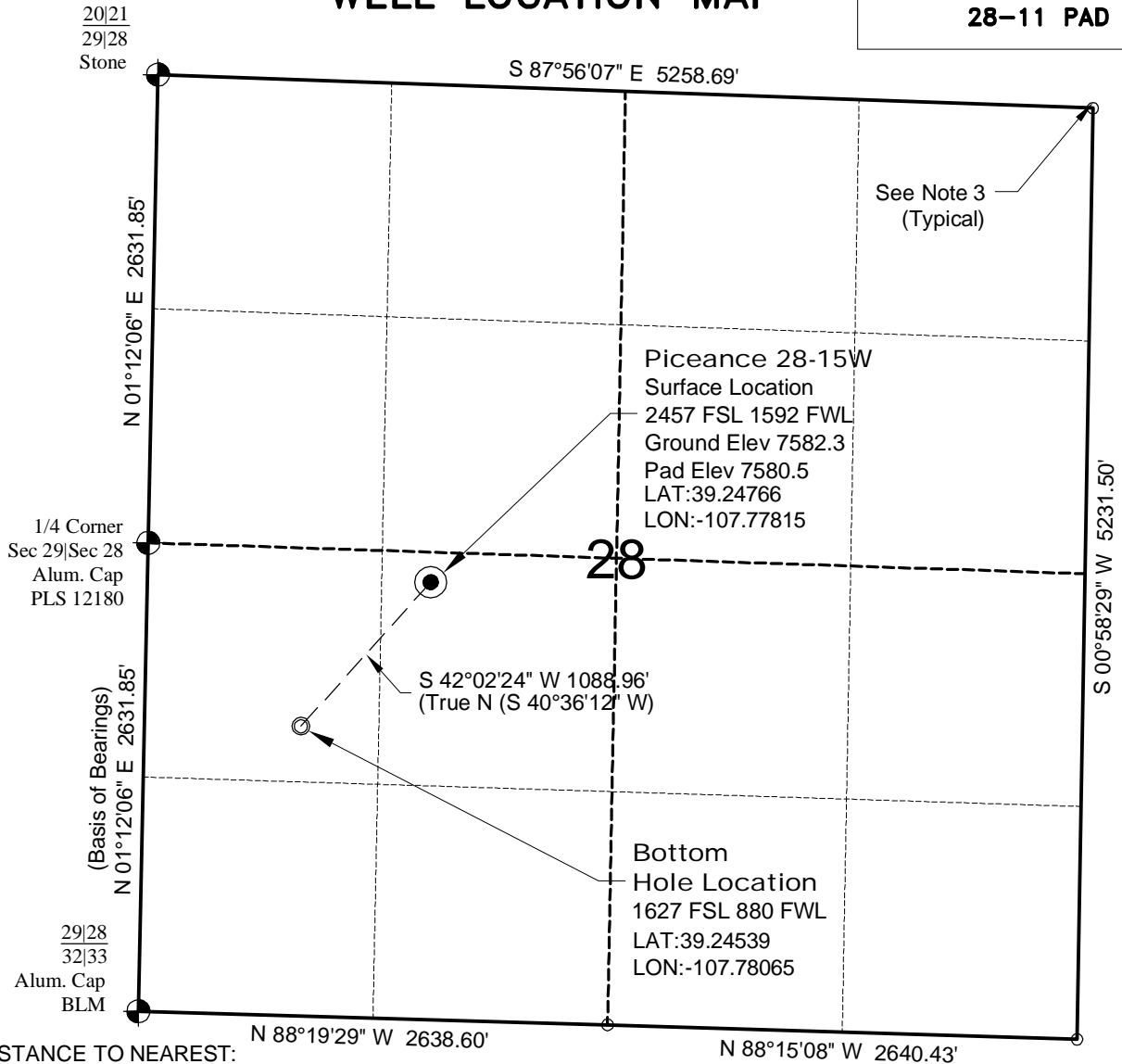


WELL LOCATION MAP

PICEANCE
28-11 PAD



NOTE-DISTANCE TO NEAREST:

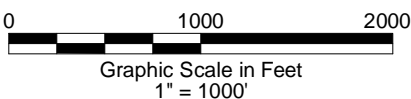
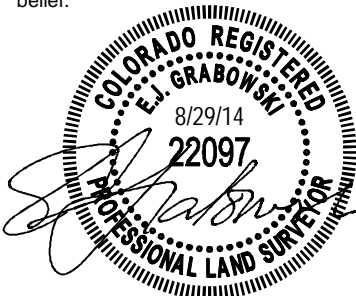
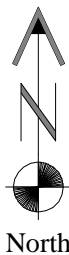
Property Line - W 1592'
Public Road - HWY 330 - 1.5 Miles±
Building - Barn 3139'±
Building - House 4654'±
Railroad - 18.5 Miles±
Powerline - 2398'±

SURVEYOR'S STATEMENT

The undersigned hereby states that the well location shown hereon was staked on the ground based on existing monumentation and/or physical evidence found in the field and is correct to the best of my knowledge, information and belief.

NOTES

- 1.) Horizontal and vertical datum based on Mesa County control point "SN23" with an elevation of 8008.15. NAVD 1988.
 - 2.) All directions, distances, and dimensions shown hereon are based on coordinates from the "Colorado coordinate system of 1983 central zone" (article 52 of title 38, C.R.S.).
 - 3.) All section line dimensions shown hereon are based on field measurements of existing monuments and/or physical evidence found in the field unless otherwise indicated. Refer to land survey plats, and subdivision plats deposited in Mesa County & well plats filed with the COGCC.
 - 4.) Physical features shown hereon are for graphical representation only.
 - 5.) See Form 2A by others for visible improvements within 500' of wellhead.
 - 6.) Distances to nearest section lines are measured perpendicularly.
 - 7.) This is not a land survey nor land survey plat.
 - 8.) Date of Survey 10/5/12; Date of Drawing 8/29/14. REV 1
- PDOP Reading: 2.5 Instrument Operator: Dave Murrey



PICEANCE ENERGY, LLC
PICEANCE 28-15W

SL NE1/4 SW1/4 SECTION 28 T9S R93W
BHL NW1/4 SW1/4 SECTION 28 T9S R93W
6th PM MESA COUNTY COLORADO