

Radial Cement Bond Log

Gamma Ray

CCL

| | | | |
|------------------------|--|--|--|
| Company | | BAYSWATER E&P LLC | |
| Well | | HEIDENREICH 13-10 | |
| Field | | WATTENBERG | |
| County | | Weld | |
| State | | COLORADO | |
| Location: | | API # : 05-123-12304 | |
| Permanent Datum | | SHL: 1930' FSL & 660 FWL NW/SW | |
| Log Measured From | | SEC 10 TWP 6N RGE 64W | |
| Drilling Measured From | | K.B. 11' | |
| Elevation | | 4818' | |
| Other Services | | K.B. 4829' D.F. 4828' G.L. 4818' | |
| Date | | 9-2-2014 | |
| Run Number | | ONE | |
| Depth Driller | | 7190' | |
| Depth Logger | | 2030' | |
| Bottom Logged Interval | | 2030' | |
| Top Log Interval | | SURFACE | |
| Open Hole Size | | 8 5/8 | |
| Type Fluid | | WATER | |
| Density / Viscosity | | 1.0 | |
| Max. Recorded Temp. | | 92 Deg. F | |
| Estimated Cement Top | | 720' | |
| Time Well Ready | | N/A | |
| Time Logger on Bottom | | N/A | |
| Equipment Number | | 3812 | |
| Location | | GREELEY, CO. | |
| Recorded By | | Mike Jandreau | |
| Witnessed By | | Josh Freed | |
| Borehole Record | | Tubing Record | |
| Run Number | | Bit | |
| From | | To | |
| Size | | Weight | |
| From | | To | |
| Casing Record | | Size | |
| Surface String | | 8 5/8 | |
| Prot. String | | 24# | |
| Production String | | 4 1/2 | |
| Liner | | 11.6# | |
| | | 0 | |
| | | 7190' | |

<<< Fold Here >>>

All interpretations are opinions based on inferences from electrical or other measurements and we cannot and do not guarantee the accuracy or correctness of any interpretation, and we shall not, except in the case of gross or willful negligence on our part, be liable or responsible for any loss, costs, damages, or expenses incurred or sustained by anyone resulting from any interpretation made by any of our officers, agents or employees. These interpretations are also subject to our general terms and conditions set out in our current Price Schedule.

Comments



NOT CORRELATED
LOGGED TO VERIFY CEMENT

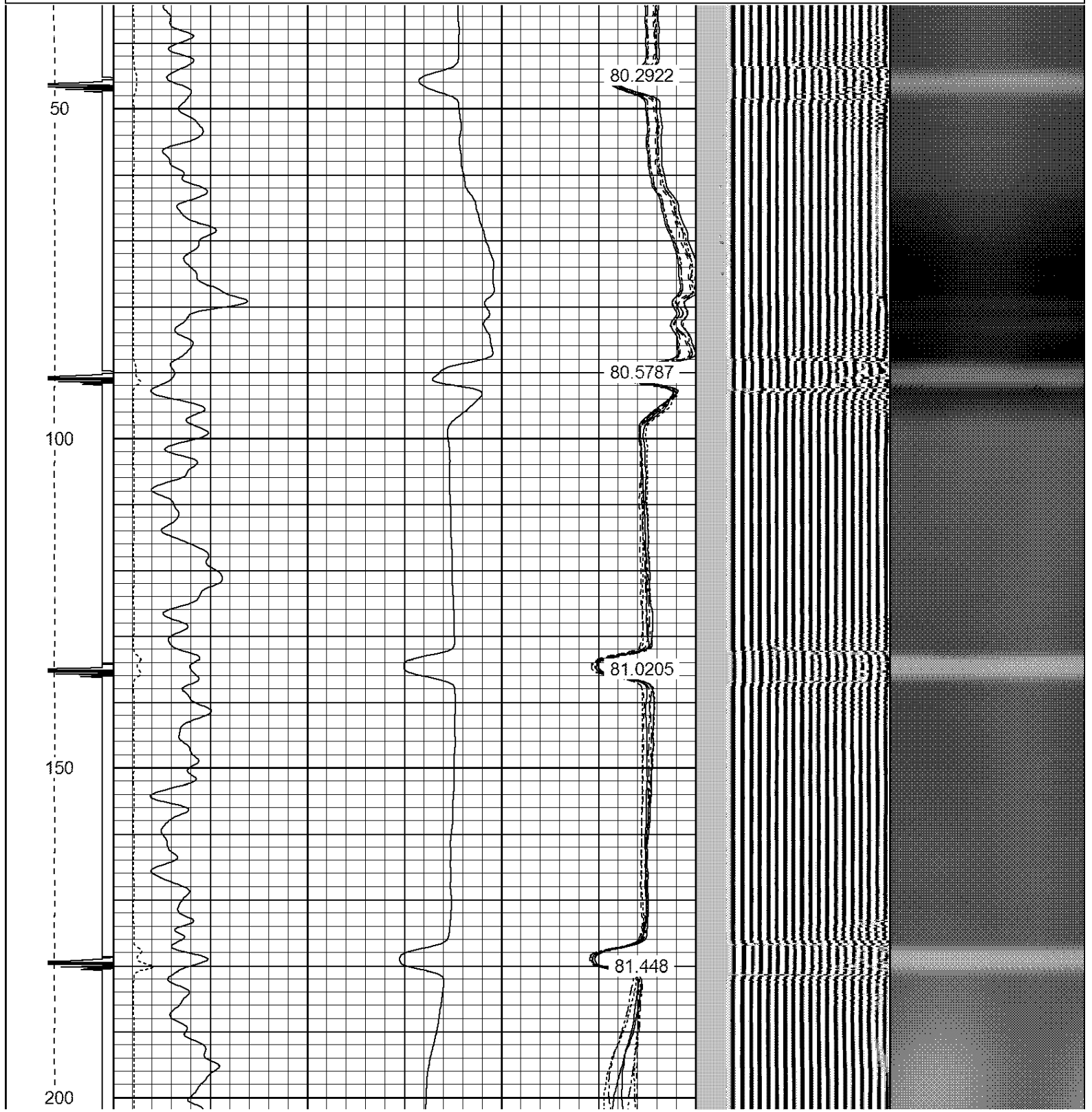
THANK YOU FOR USING WARRIOR ENERGY SERVICES!

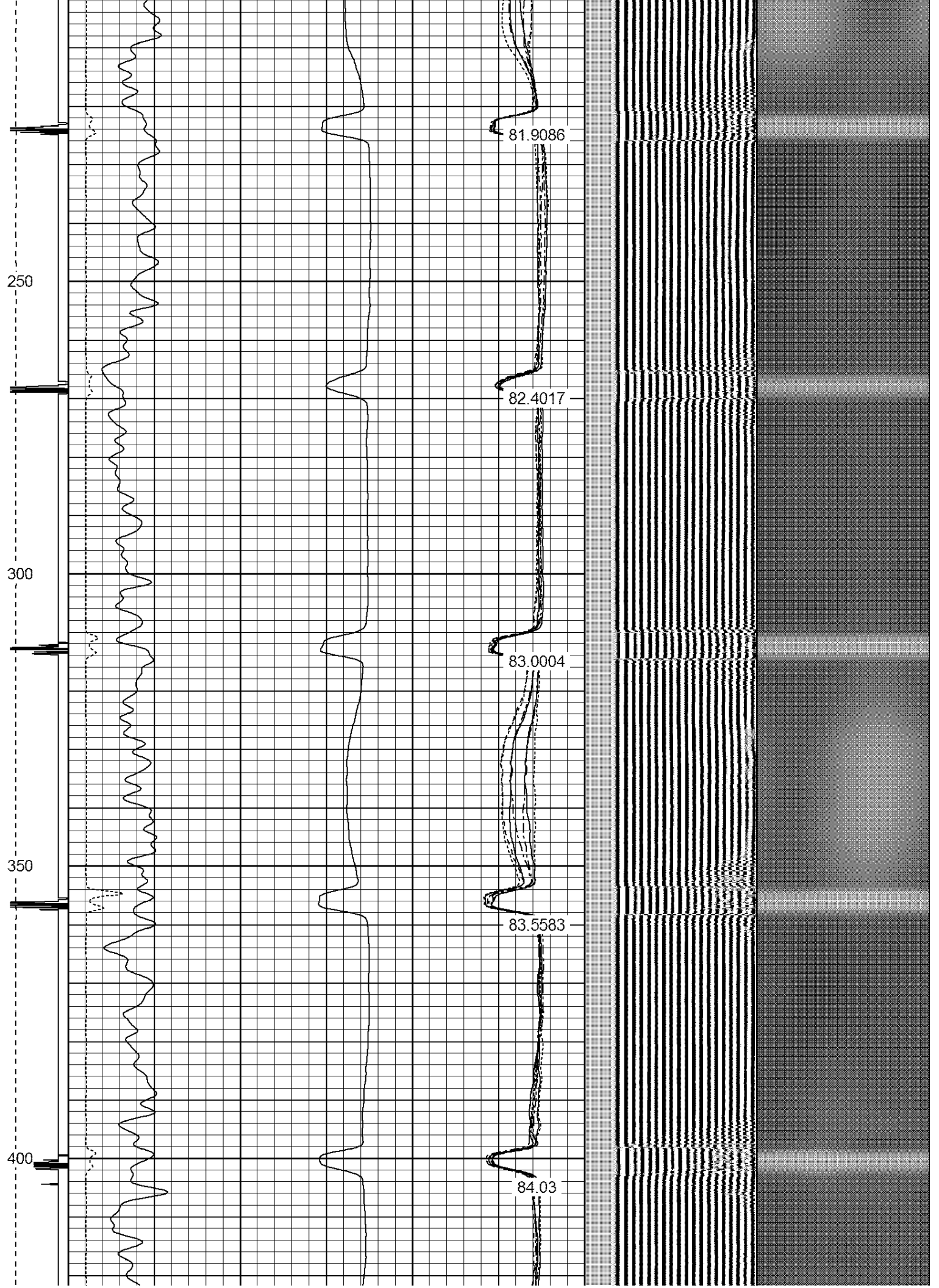
| Sensor | Offset (ft) | Schematic | Description | Len (ft) | OD (in) | Wt (lb) |
|--------|-------------|-----------|-------------|----------|---------|---------|
| CENT | 19.08 | | | | | |

| | | | | | | |
|--|-------|--|--------|------|------|--|
| | | | PTS275 | 2.83 | 2.75 | |
| HEADVOLT | 16.25 | | | | | |
| RBT | 16.25 | | | | | |
| IntTemp | 14.83 | | | | | |
| | | | | | | |
| | | | | | | |
| | | | | | | |
| | | | | | | |
| WVF3FT | 11.58 | | | | | |
| WVFCAL | 11.58 | | | | | |
| WVFS1 | 11.58 | | | | | |
| WVFS2 | 11.58 | | | | | |
| WVFS3 | 11.58 | | | | | |
| WVFS4 | 11.58 | | | | | |
| WVFS5 | 11.58 | | | | | |
| WVFS6 | 11.58 | | | | | |
| WVFS7 | 11.58 | | | | | |
| WVFS8 | 11.58 | | | | | |
| WVF5FT | 10.58 | | | | | |
| | | | | | | |
| CNLSC | 6.00 | | | | | |
| CNSSC | 5.17 | | | | | |
| GR | 4.33 | | | | | |
| CCL | 3.64 | | | | | |
| | | | | | | |
| GR | 0.90 | | | | | |
| | | | | | | |
| Dataset: heidenreich 13-10.db: field/well/run1/pass2 | | | | | | |
| Total Length: 19.08 ft | | | | | | |
| Total Weight: 160.00 lb | | | | | | |
| O.D. 2.75 in | | | | | | |

| | |
|----------------------|----------------------|
| Database File: | heidenreich 13-10.db |
| Dataset Pathname: | pass2 |
| Presentation Format: | ips_rbt |

| | | | | | | | | | | | | | | | | | |
|------------------|-----|---|-----|-----------|-----|---|------------|-----|-------|-------|-------------------|---|-----|------|---|------------|---|
| -9 | CCL | 1 | 200 | TT (usec) | 800 | 0 | AMP (mV) | 100 | 0 | AMPS1 | 100 | 200 | VDL | 1200 | 1 | Cement Map | 8 |
| LSPD (ft/min) | | | 0 | GR (cps) | 200 | 0 | AMPx5 (mV) | 20 | 0 | AMPS2 | 100 |  | | | 1 | 100 | |
| | | | 200 | GR (cps) | 400 | | | | 0 | AMPS4 | 100 |  | | | | | |
| 0 | 250 | | | | | | | 0 | AMPS5 | 100 | | | | | | | |
| | | | | | | | | | 0 | AMPS6 | 100 | | | | | | |
| | | | | | | | | | 0 | AMPS7 | 100 | | | | | | |
| | | | | | | | | | 0 | AMPS8 | 100 | | | | | | |
| | | | | | | | | | | | IntTemp (degF) | | | | | | |





450

84.5866

500

85.1538

550

85.6488

600

86.1753

86.6534

650

700

750

800

850

87.2741

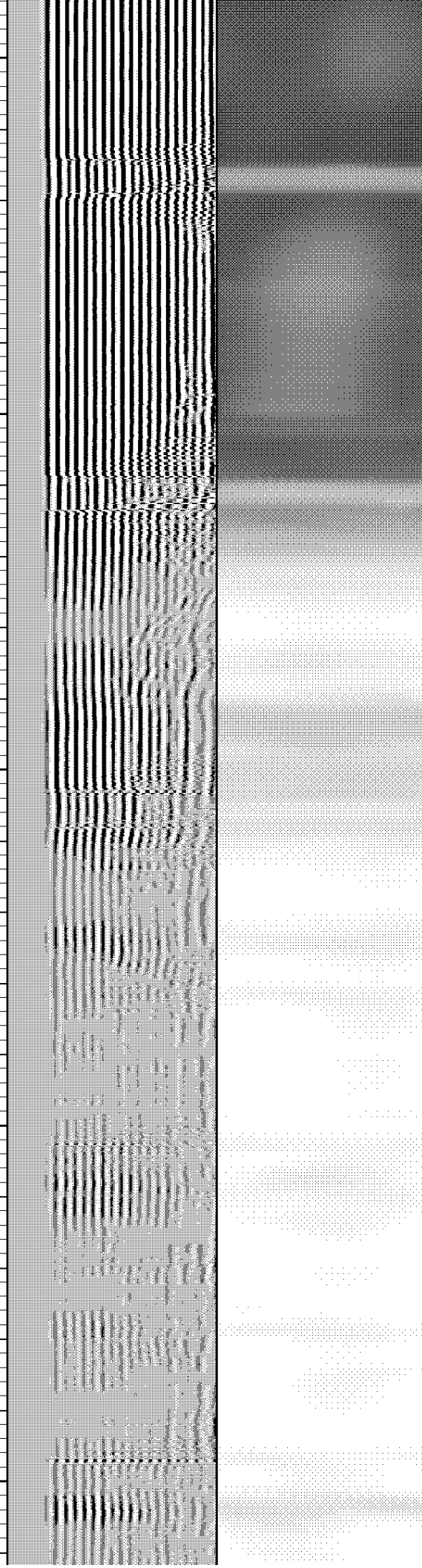
Top of Cement

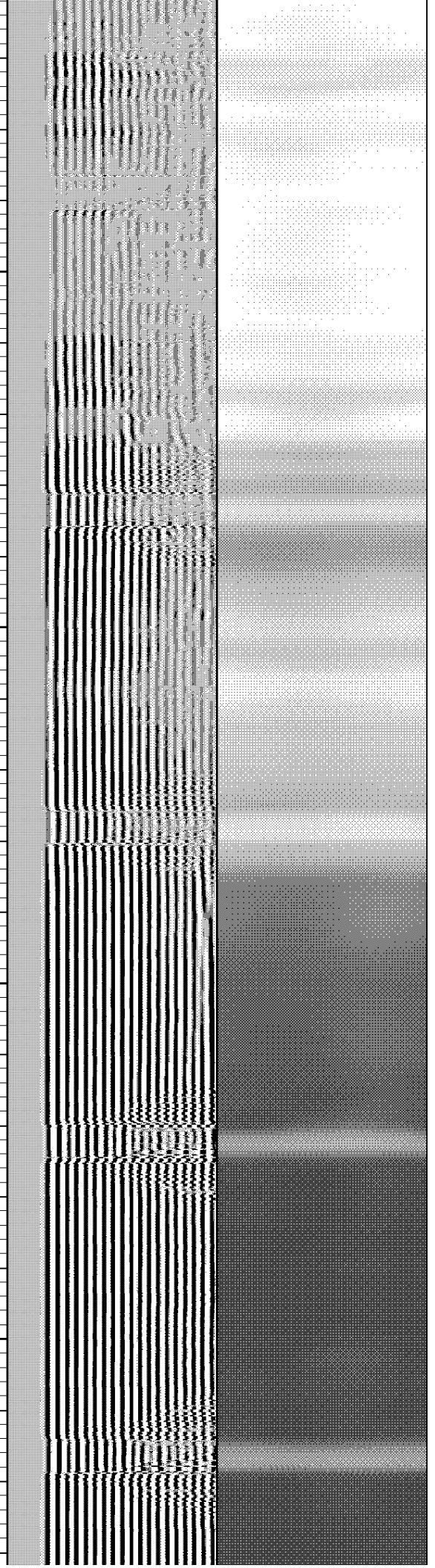
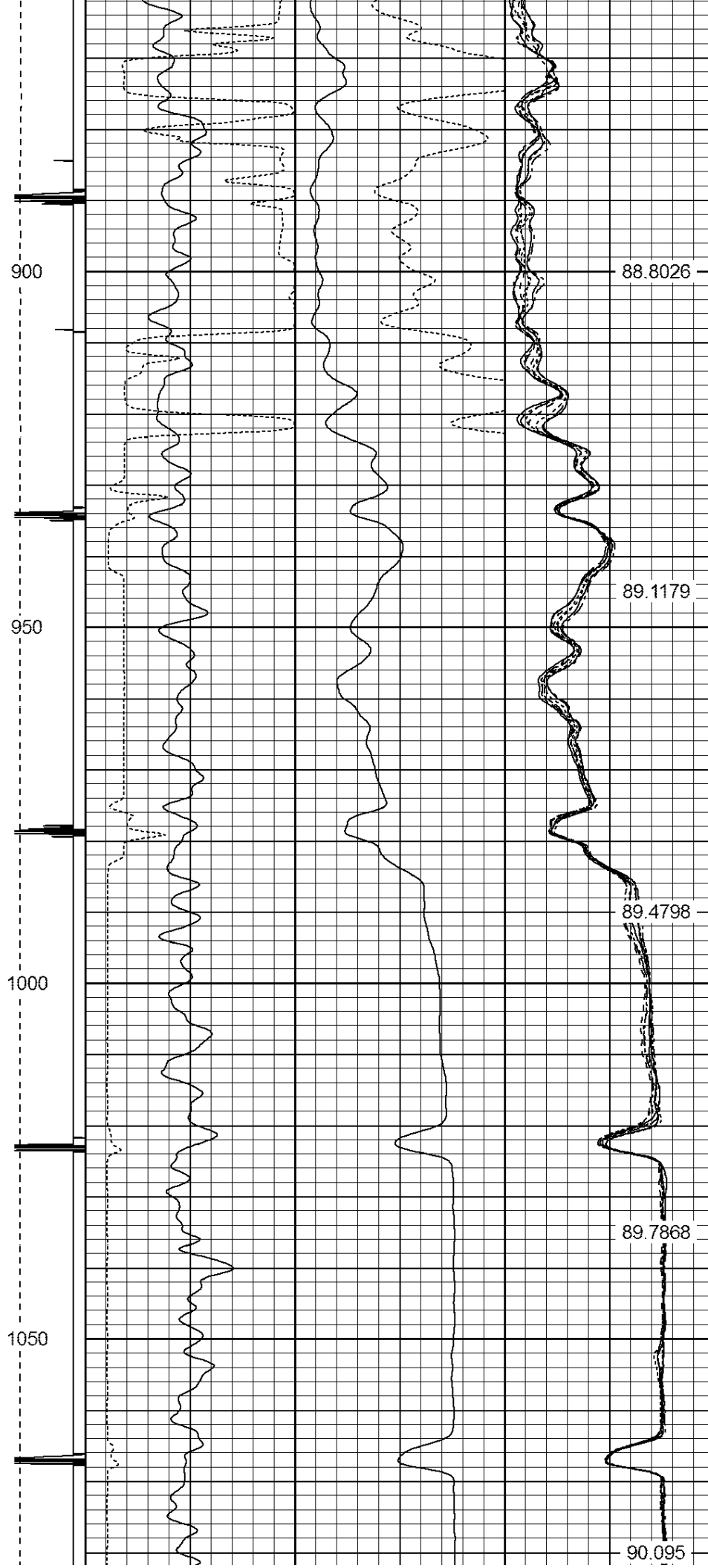
87.6116

87.9491

88.2445

88.6096





1100

1150

1200

1250

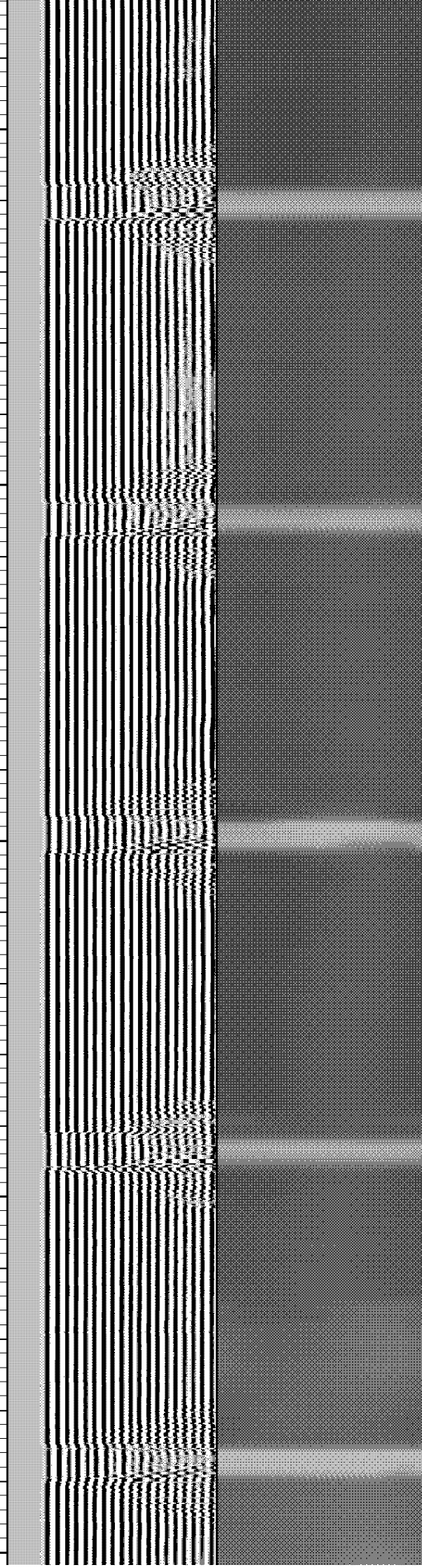
1300

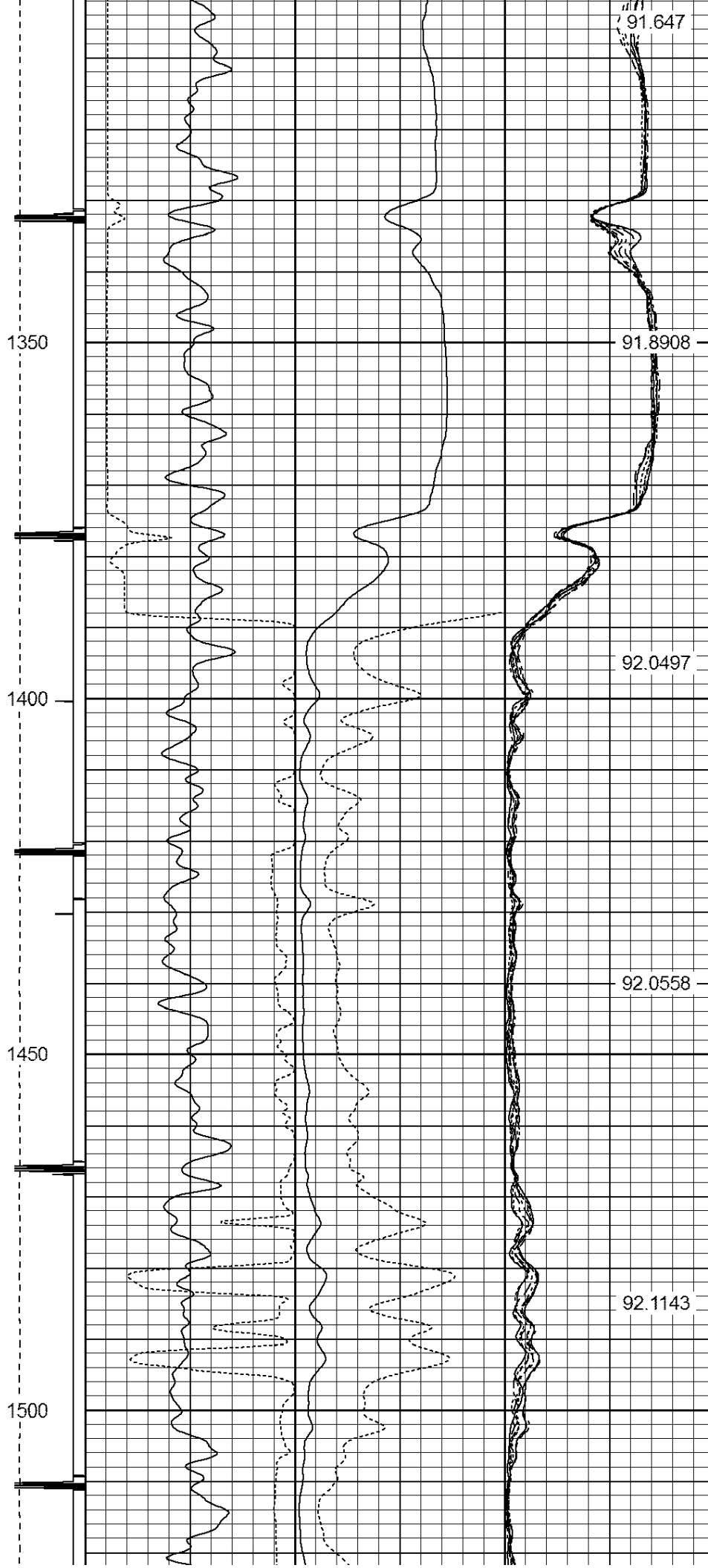
90.4919

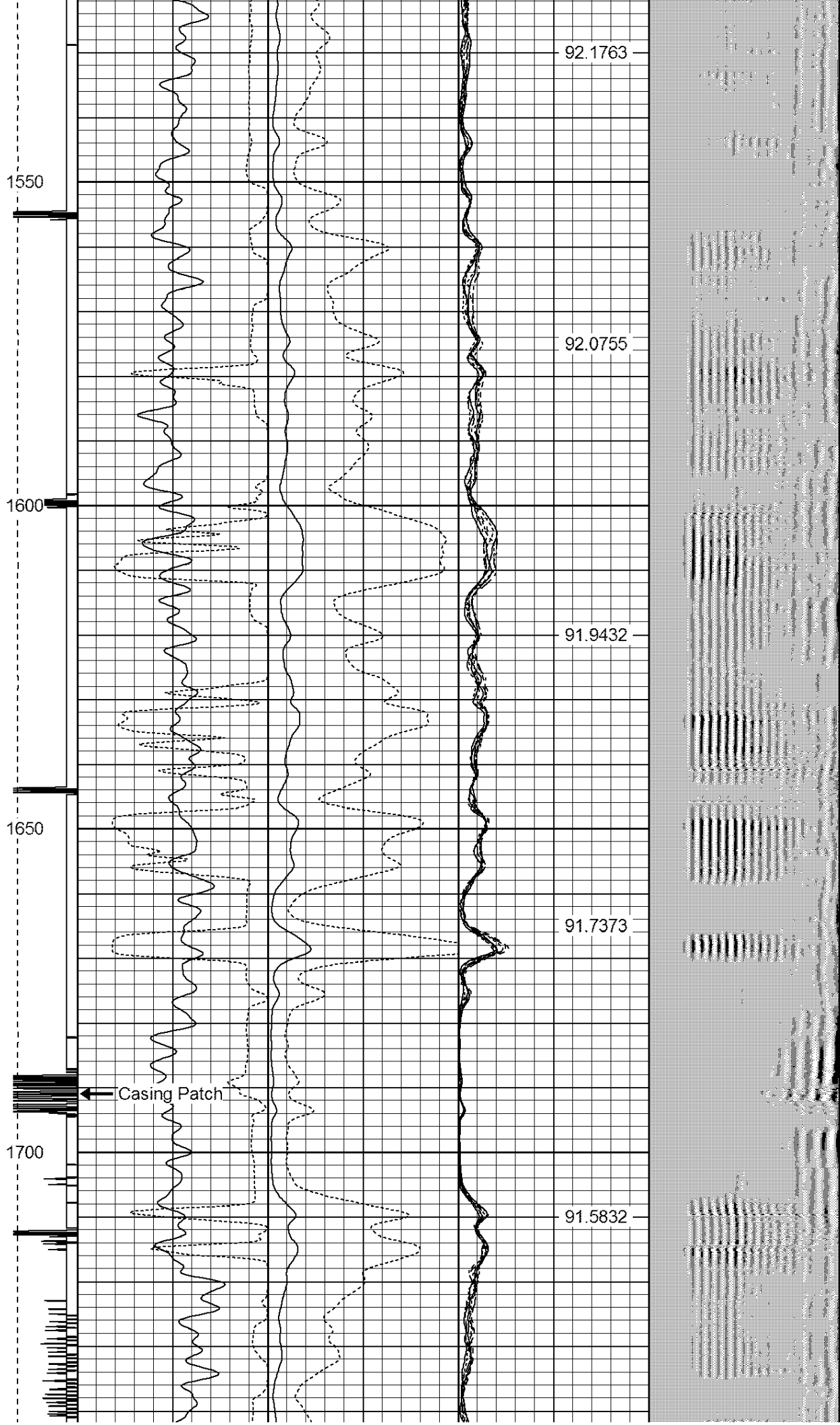
90.7833

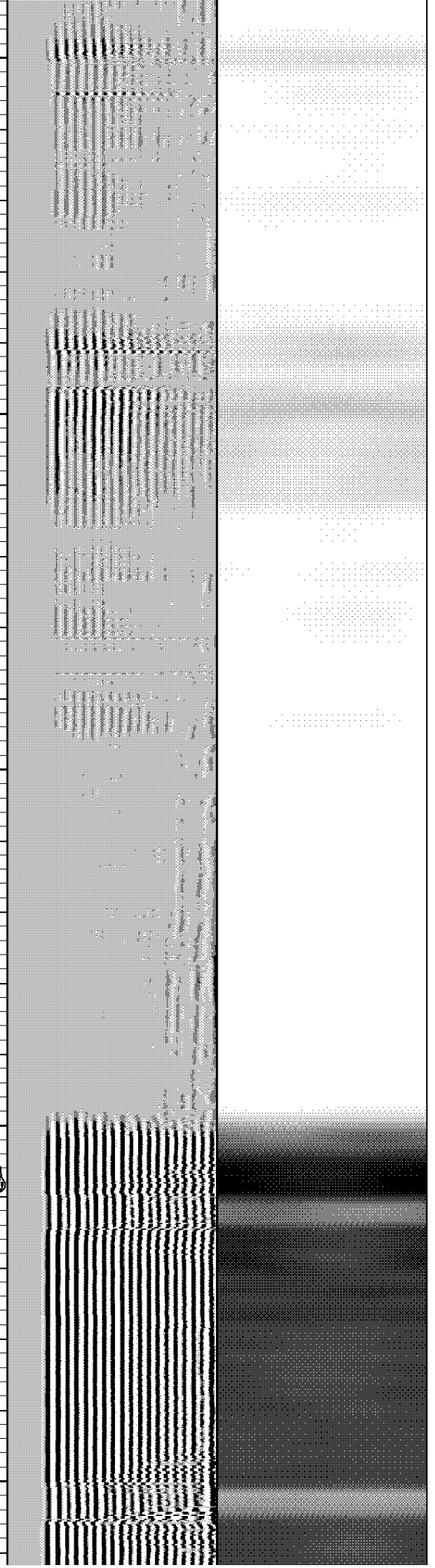
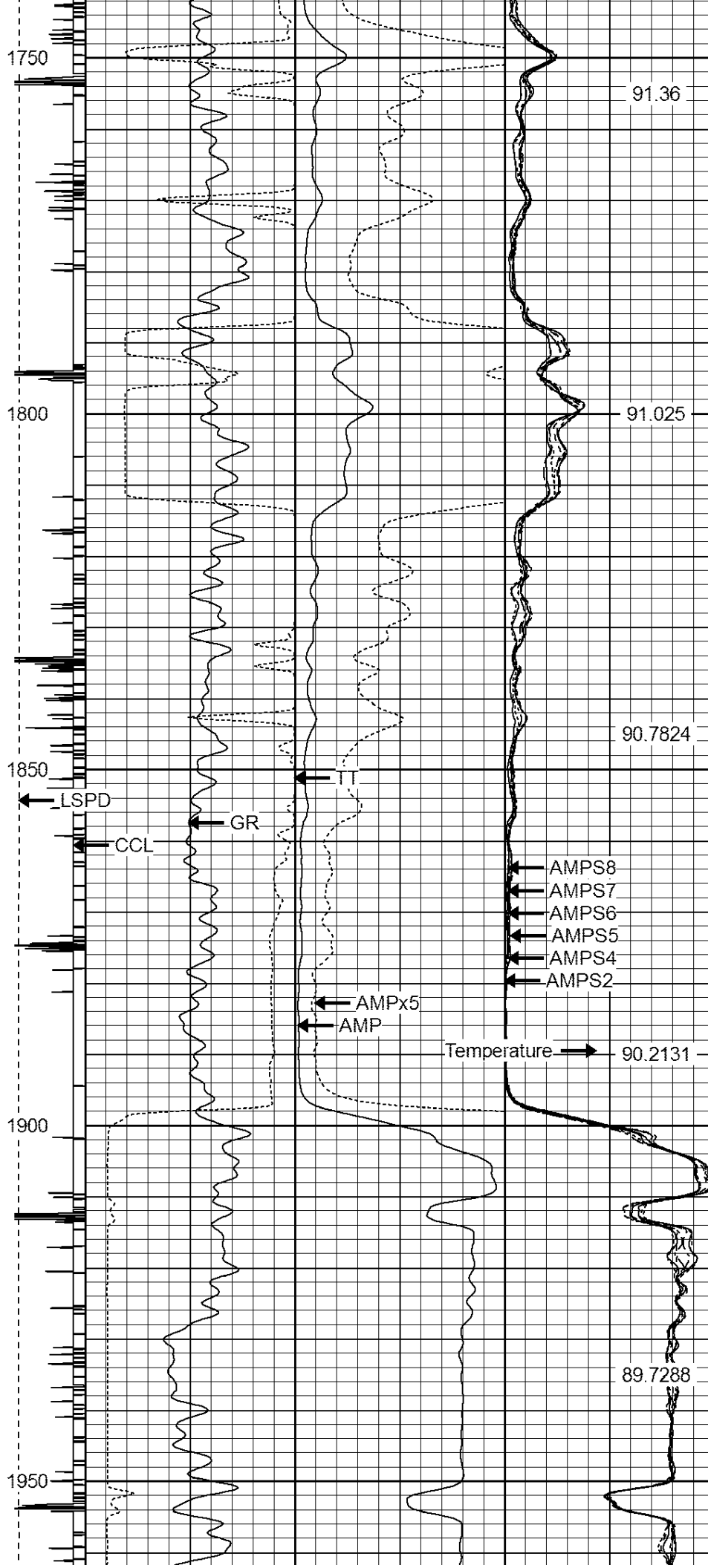
91.0848

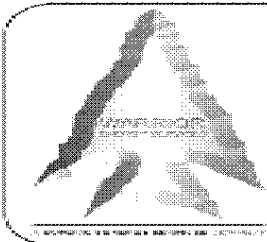
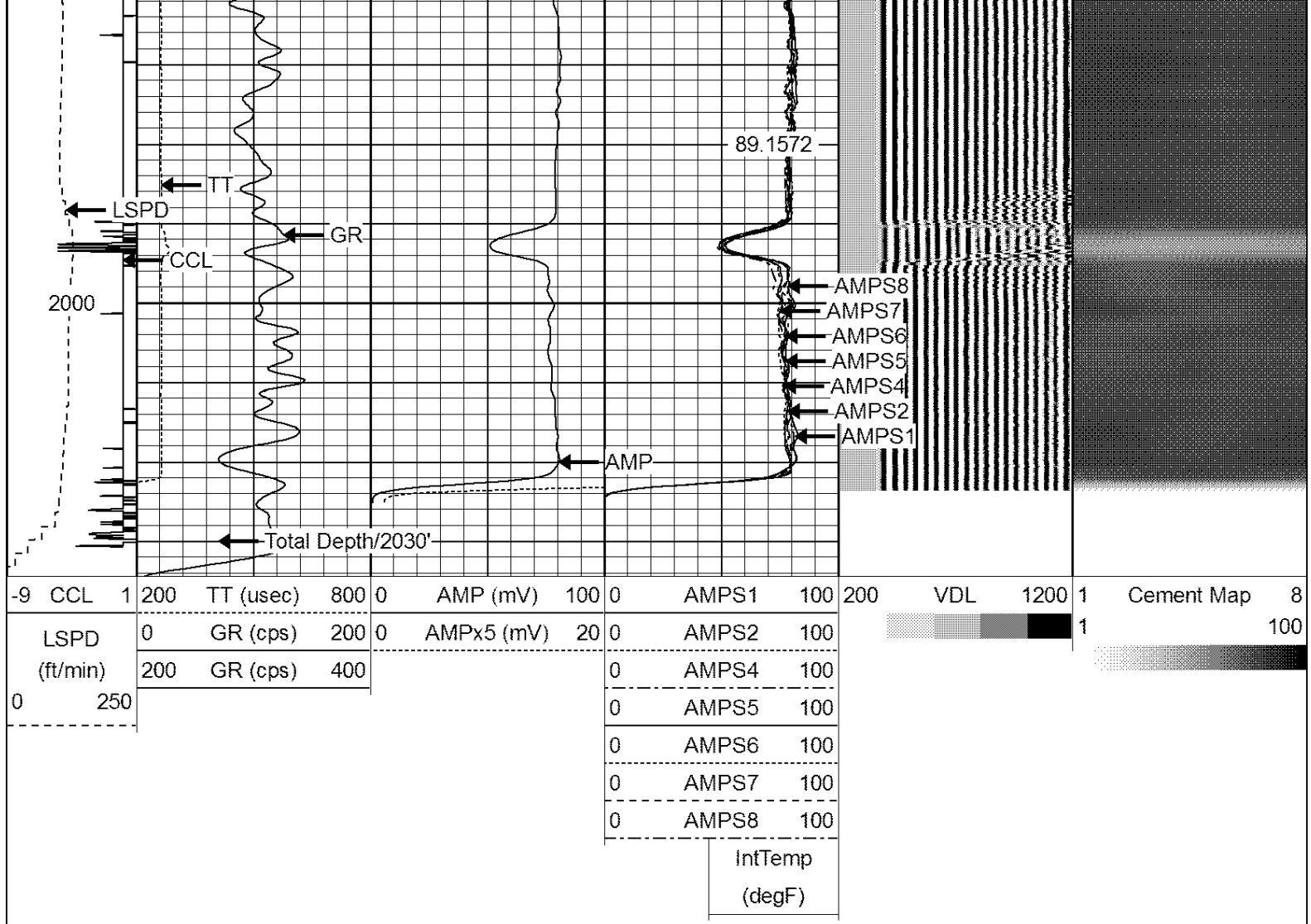
91.4801











WARRIOR
ENERGY SERVICES

Company BAYSWATER E&P LLC
Well HEIDENREICH 13-10
Field WATTENBERG
County ADAMS
State COLORADO