

correctness of
, or expenses
subject to

Accuracy	
Costs, data	
Conditions a	

Well

FREEDOM TWO C19-04

...ante the
...ny loss
...e interp

County	WELD	State	COLORADO
<p>not guaranteed. The information is for informational purposes only. The information is not intended to be used for any other purpose. The information is not intended to be used for any other purpose. The information is not intended to be used for any other purpose.</p>			

<p>Location:</p> <p>AP #: 05 23 4624</p> <p>Other Services</p>	<p>not and e or res or emp ce Sch</p>
-------------------------------------------------------------------------------------------	---------------------------------------------------

SEC	TWP	RGE	Elevation
19	4N	64W	

Count	State	Log Measured From	Log Measured To	Drilling Measured From	Drilling Measured To
KB	D.F. 4880	KB		KB	
	G.L. 4830				

	ONE			Cc	whether more negligence by art- stitutions
	7256				
	1000				

	SURFACE		Electrical
			s or will
	7-78		tation n
			s and c

osity	N/A	
d Temp.	N/A	
ment Top	SURFACE	

[illegible]

Borehole Record	Tubing Record	
CARL SWIFT		

								>>
are opin								
d we sl								
ined by								

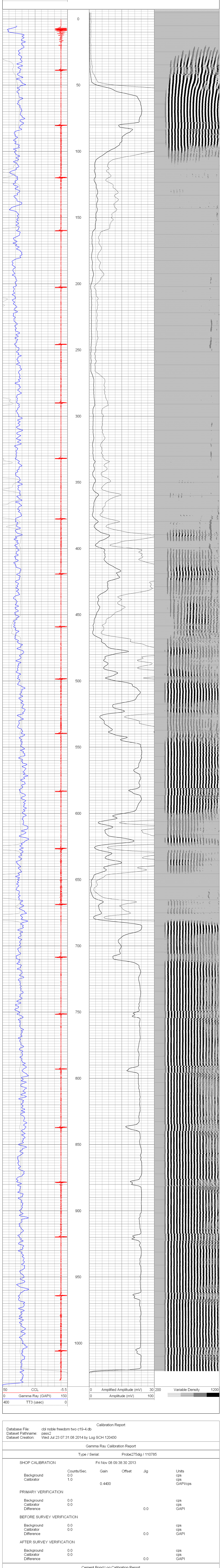
Size	Weight	Top	Bottom	Hold Here
8-5/8	2# J-55	SURFACE	471	Interpretation Interpretation and or surface

						<<	All in inter- incub		
--	--	--	--	--	--	----	---------------------------	--	--

THANK YOU FOR CHOOSING NCPS!!!!!!
LOG NOT CORRELATED
WCR 44 & WCR 49, SE INTO

Database File: cbl noble freedom two c19-4.db
 Dataset Pathname: pass2
 Presentation Format: noble en
 Dataset Creation: Wed Jul 23 07:31:08 2014 by Log SCH 120430
 Charted by: Depth in Feet scaled 1:240

50	CCL	-5.5	0	Amplified Amplitude (mV)	30	200	Variable Density	1200
0	Gamma Ray (GAPI)	150	0	Amplitude (mV)	100			
400	TT3 (usec)	0						



Serial Number:	110802		
Tool Model:	Probe2750Digital		
Performed:	Wed Jul 23 07:30:29 2014		
Depth:	896.8	ft	
Casing Diameter:	4.5	in	
	3' Spacing	5' Spacing	
Signal Zero:	0.7	0	mV
Calibrated Amplitude:	81.1961	81.1961	mV
Reading at Signal Zero:	-0.00588379	-0.00588379	V
Reading in Erge Pipe:	2.4967	2.27429	V

Gain:	32.1651	35.6096
Offset:	0.889253	0.209519