



**Radial Bond Log, V.D.L.
C.C.L. Gamma-Ray & Temp.**

Pioneer Energy Services

Company Bill Barrett Corp.

Well Anschutz State 4-62-02-3228CH2
Field
County Weld State Colo.

Company **Bill Barrett Corp.**
Well **Anschutz State 4-62-02-3228CH2**
Field
County **Weld** State **Colo.**

Location: API #: 05123389640000 Other Services
SEC 02 TWP 4N RGE 62W
SWNW
Permanent Datum GL Elevation 4544
Log Measured From KB
Drilling Measured From KB
None
K.B. 4566
D.F. 4565
G.L. 4544

Date of Service	6-20-2014		
Run Number	1		
Depth Driller or PBTD	6510'		
Depth Logger	5731'		
Bottom Log Interval	5719'		
Top Log Interval	Surface		
Open Hole Size	8.75"		
Type Fluid	water		
Fluid Level	surface		
Fluid Density	8.33 ppg		
Max. Recorded Temperature	193		
Max. Wellhead Pressure	0		
Wellhead Connection	4" 1002		
Estimated Cement Top	930'		
Unit Number	01		
Wireline Size	9/32"		
Location	Fl. Morgan		
Recorded By	Nathan Bivens		
Witnessed By	John Dameron		
Tubing Record	Size	WMFt	Top
Surface Casing			Bottom
Production Casing	7"	26#	surface
Liner Record	4.5"	11.6#	5653'
			na

<<< Fold Here >>>

All interpretations are opinions based on inferences from electrical or other measurements and Pioneer Wireline Services cannot and does not guarantee the accuracy or correctness of any interpretation, and Pioneer Wireline Services will not, except in the case of gross or willful negligence on our part, be liable or responsible for any loss, costs, damages, or expenses incurred or sustained by anyone resulting from any interpretation made by any of our officers, agents or employees. These interpretations are also subject to Pioneer Wireline Services's general terms and conditions set out in our current Price Schedule.

Comments

N/A DENOTES NOT AVAILABLE OR NON-APPLICABLE.
S.O. # 2-220033

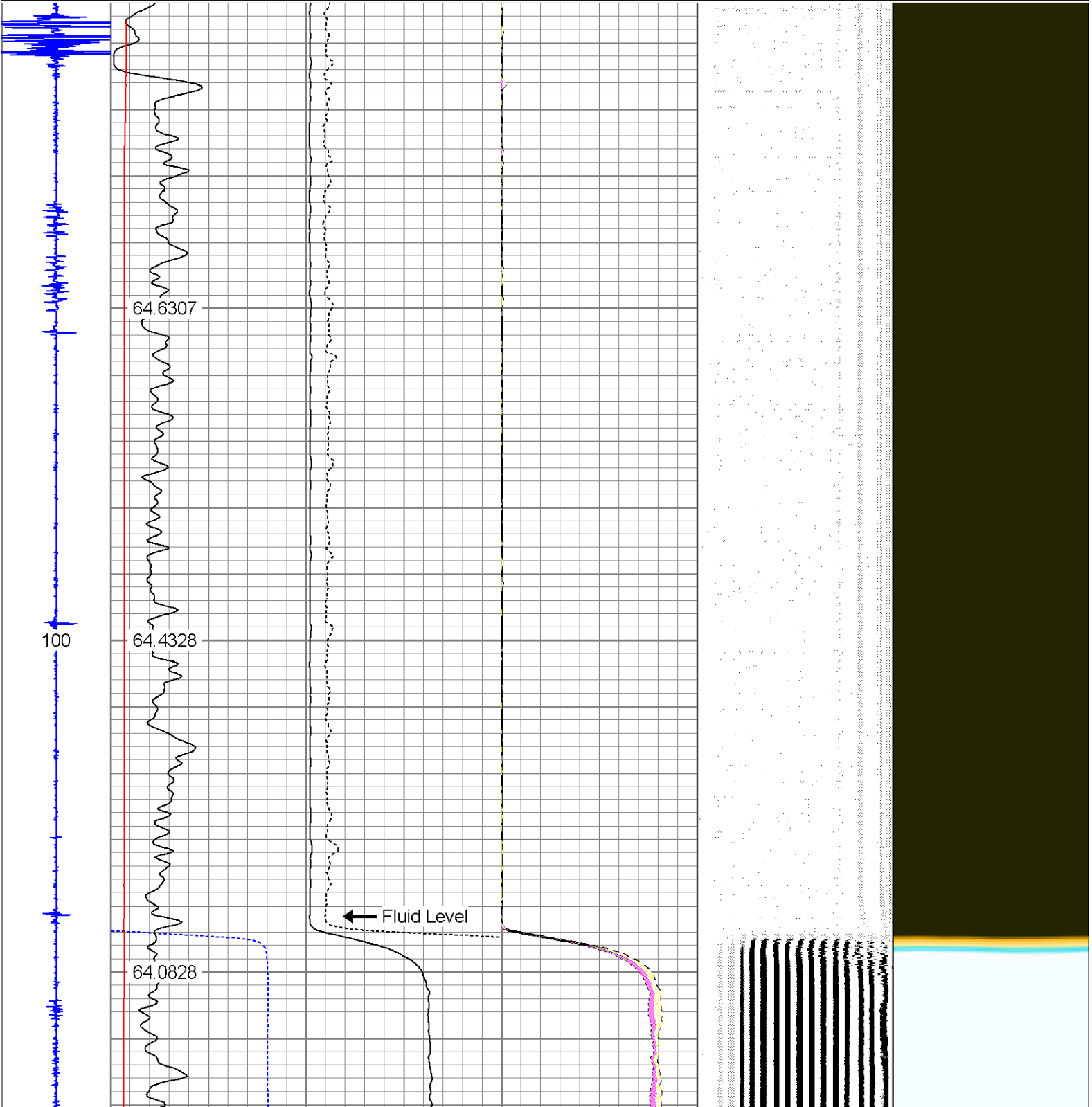
THANK YOU FOR USING PIONEER WIRELINE SERVICES

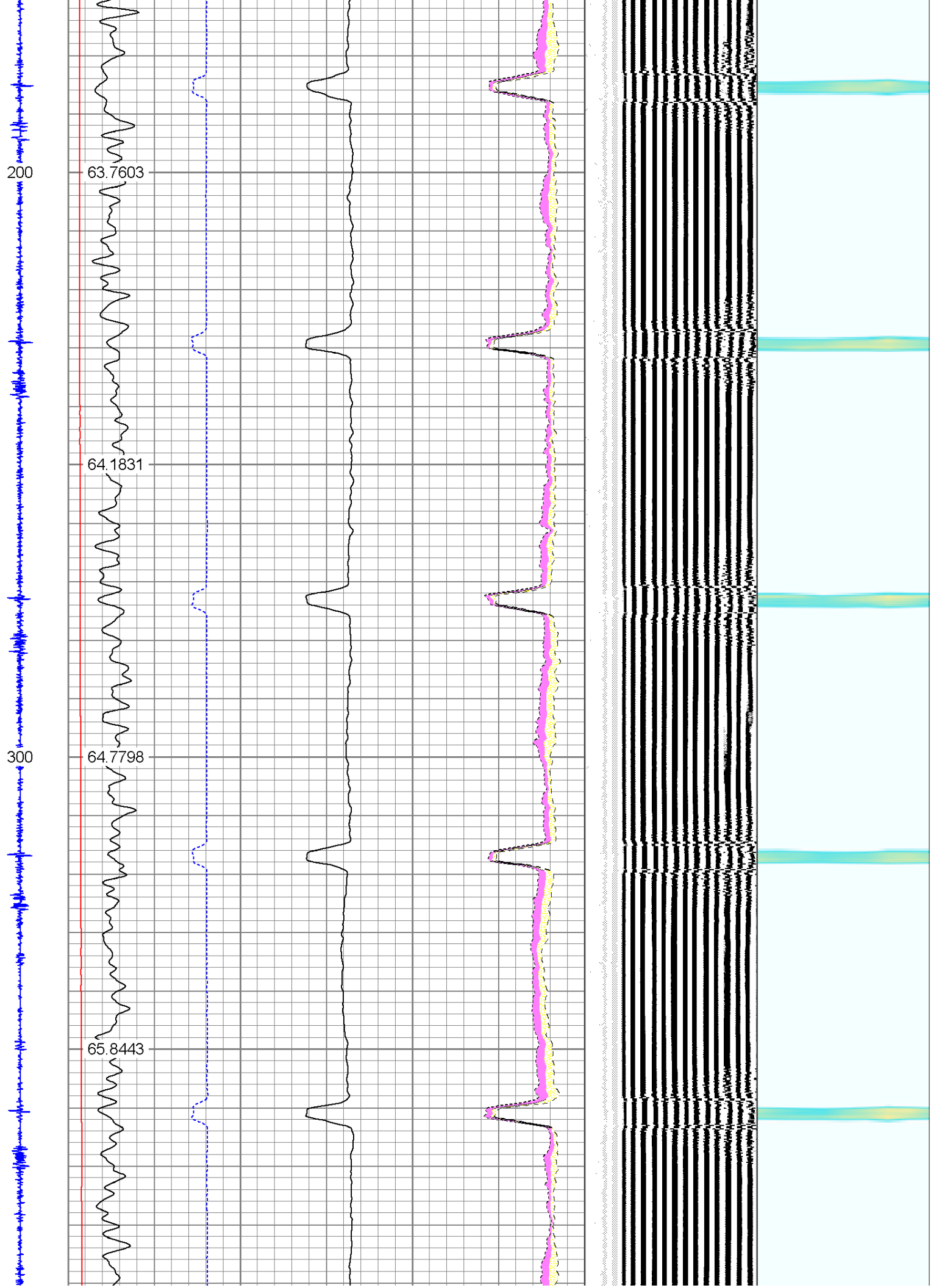
Your Pioneer Wireline Services Crew	Tool Data - Services	Serial Number
Engineer: N. Bivens Operator: W. Brigante Operator: D. Baessler Operator: T. Krein	radial bond	

Sensor	Offset (ft)	Schematic	Description	Len (ft)	OD (in)	Wt (lb)
			PTS275	2.83	2.75	
WVFS3FT	13.18		RBT-Probe (4.5040904) Prototype Probe Radii Bond Tool with Digital Telemetry	8.88	2.75	90.00
WVFCAL	13.18					
WVFS1	13.18					
WVFS2	13.18					
WVFS3	13.18					
WVFS4	13.18					
WVFS5	13.18					
WVFS6	13.18					
WVFS7	13.18					
WVFS8	13.18					
WVFS5FT	12.18					
			PTS275	2.83	2.75	
CCL	5.18					
GR	3.85		GR-Probe275 (030606)	4.54	2.75	57.00
			TEMP-Probe (P071024) Probe temp tool	1.55	1.69	5.00
TEMP	0.01					

Database File: anschutz state 4-62-02-3228ch2.db
Dataset Pathname: pass3
Presentation Format: scbl02
Dataset Creation: Fri Jun 20 11:35:04 2014 by Calc 7.0 B1
Charted by: Depth in Feet scaled 1:240

5	CCL	-5	362	TT (usec)	262	0	AMP (mV)	100	0	AMPAVG	150	200	VDL	1200	1	SECTOR MAP	8
			0	GR (GAPI)	150	0	AMPx5 (mV)	20	0	AMPMAX	150				25		100
			50	TEMP (degF)	250				0	AMPMIN	150						
				TEMP													
				(degF)													





400

66.3804

66.9966

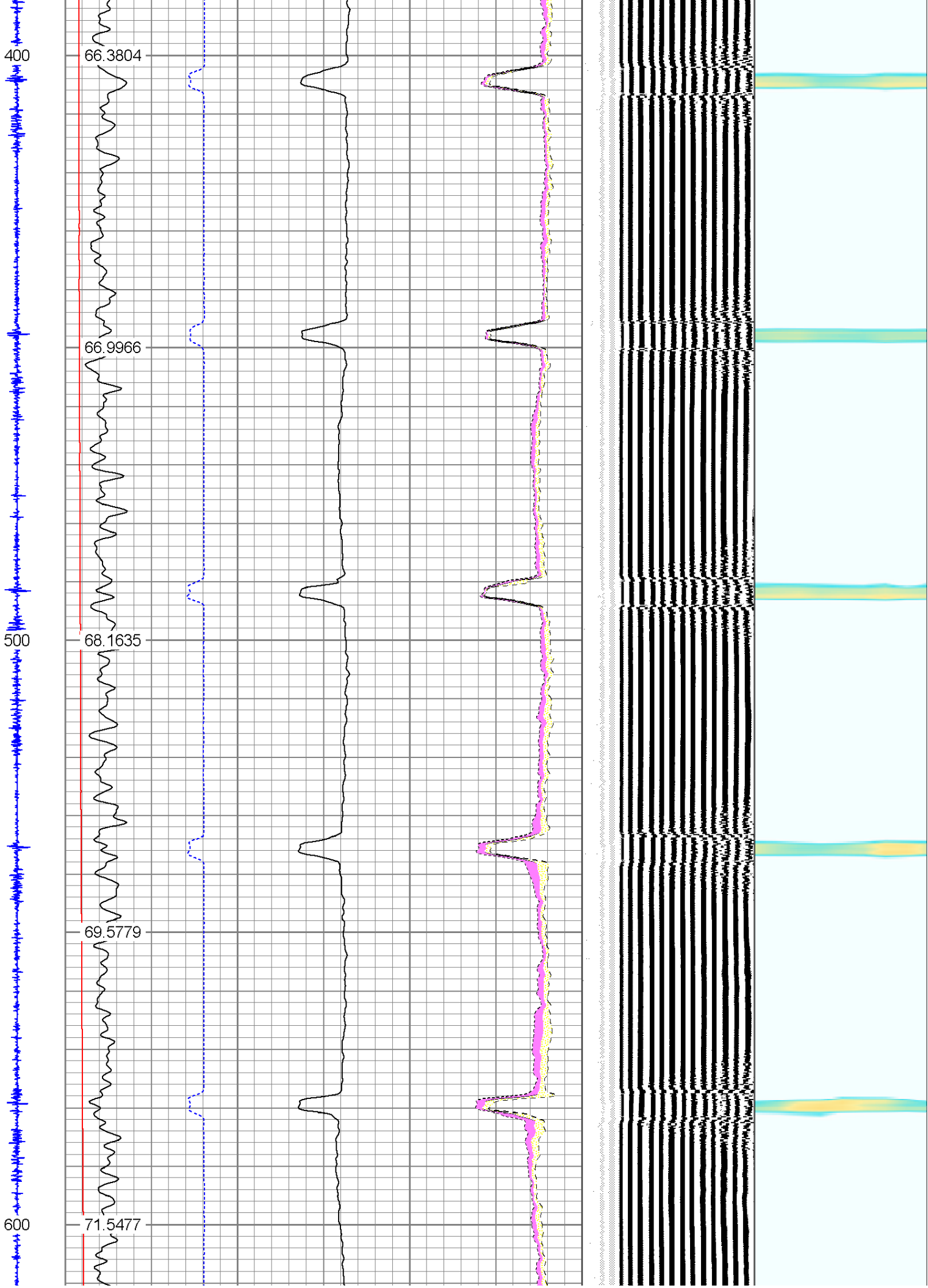
500

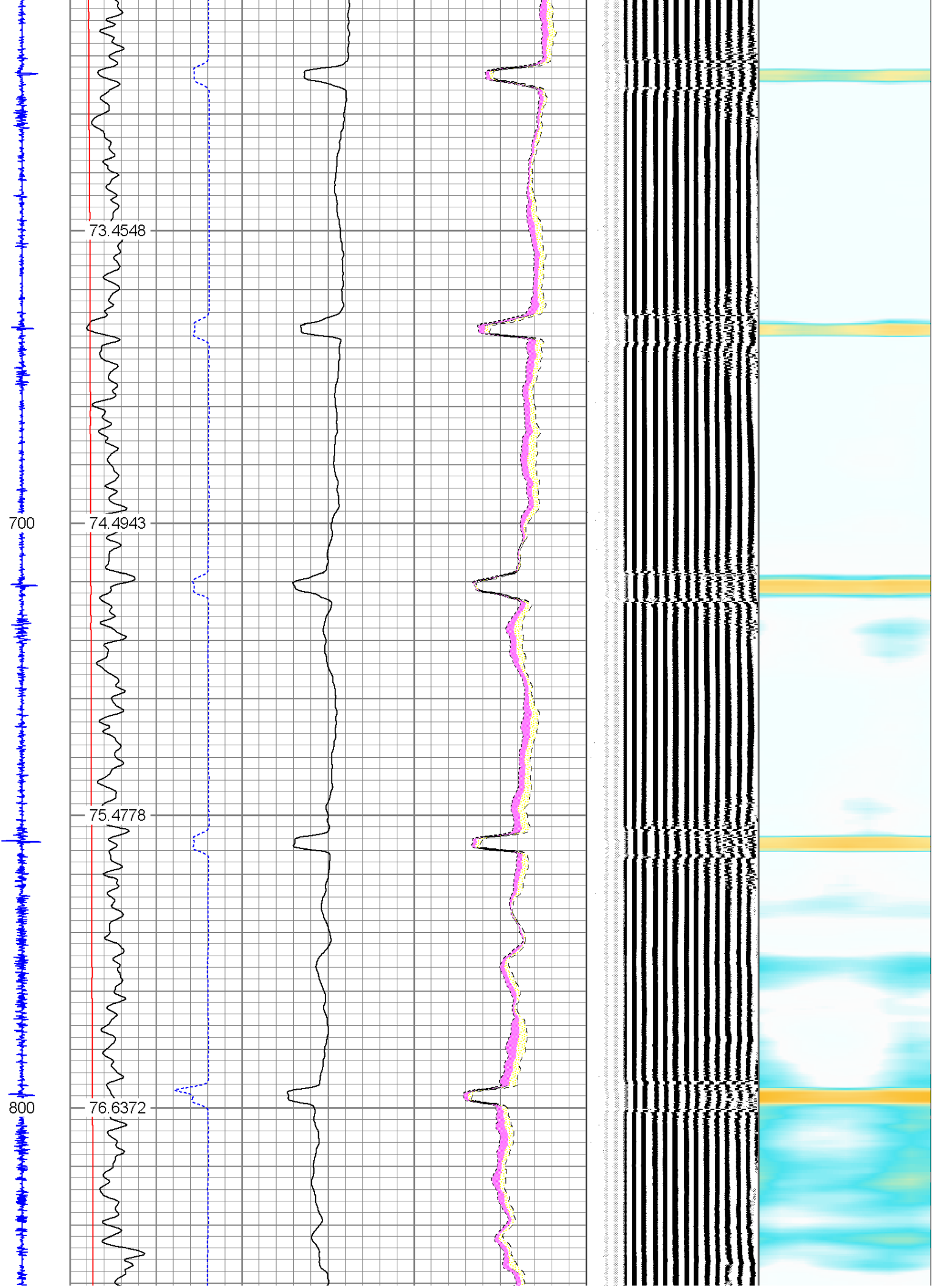
68.1635

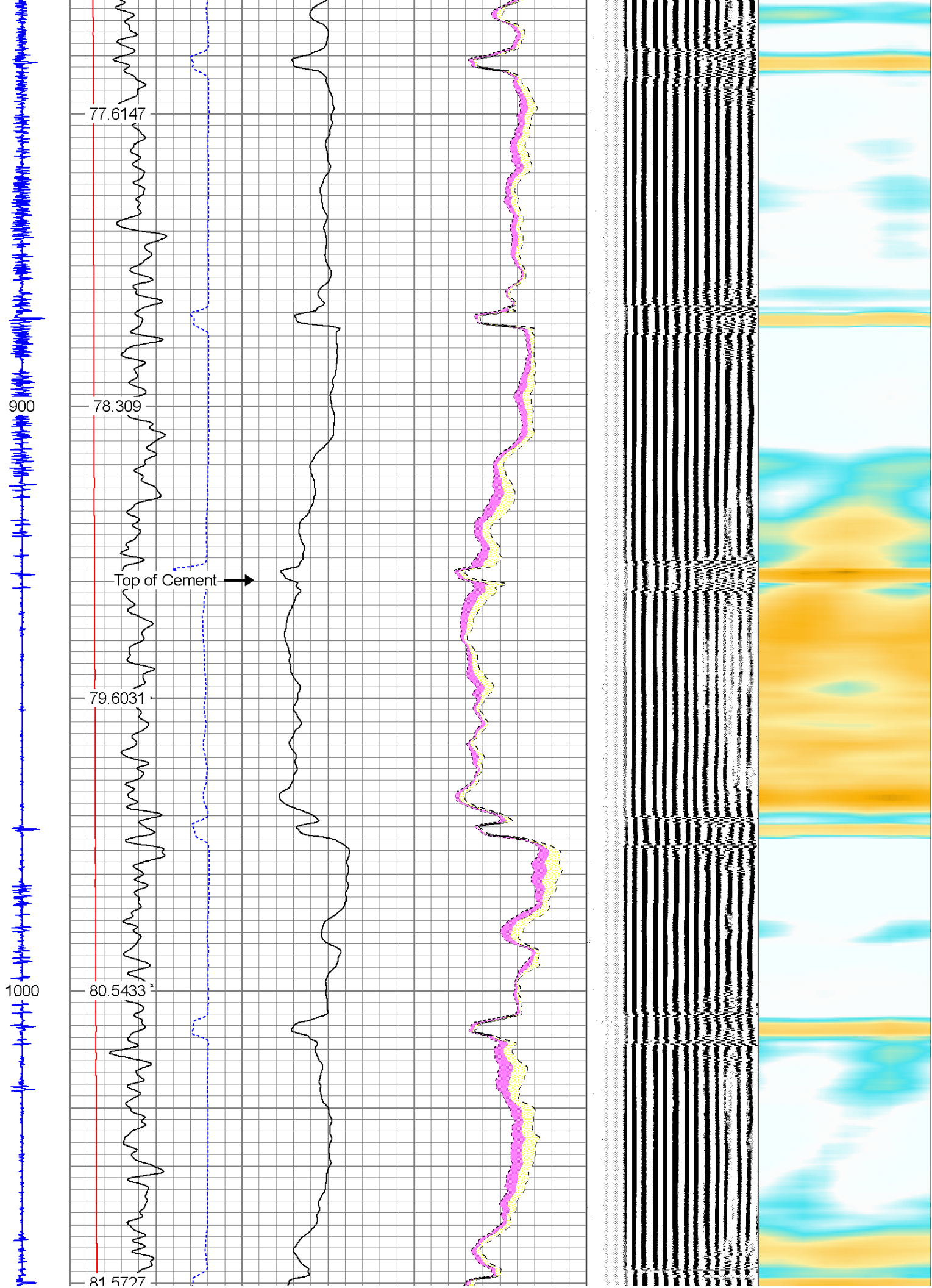
69.5779

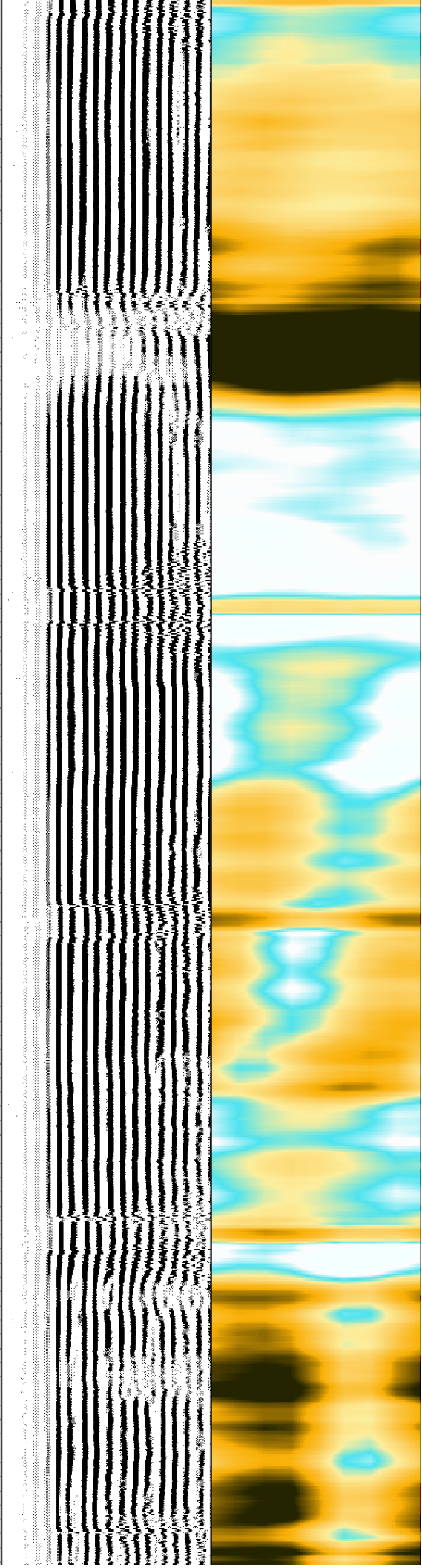
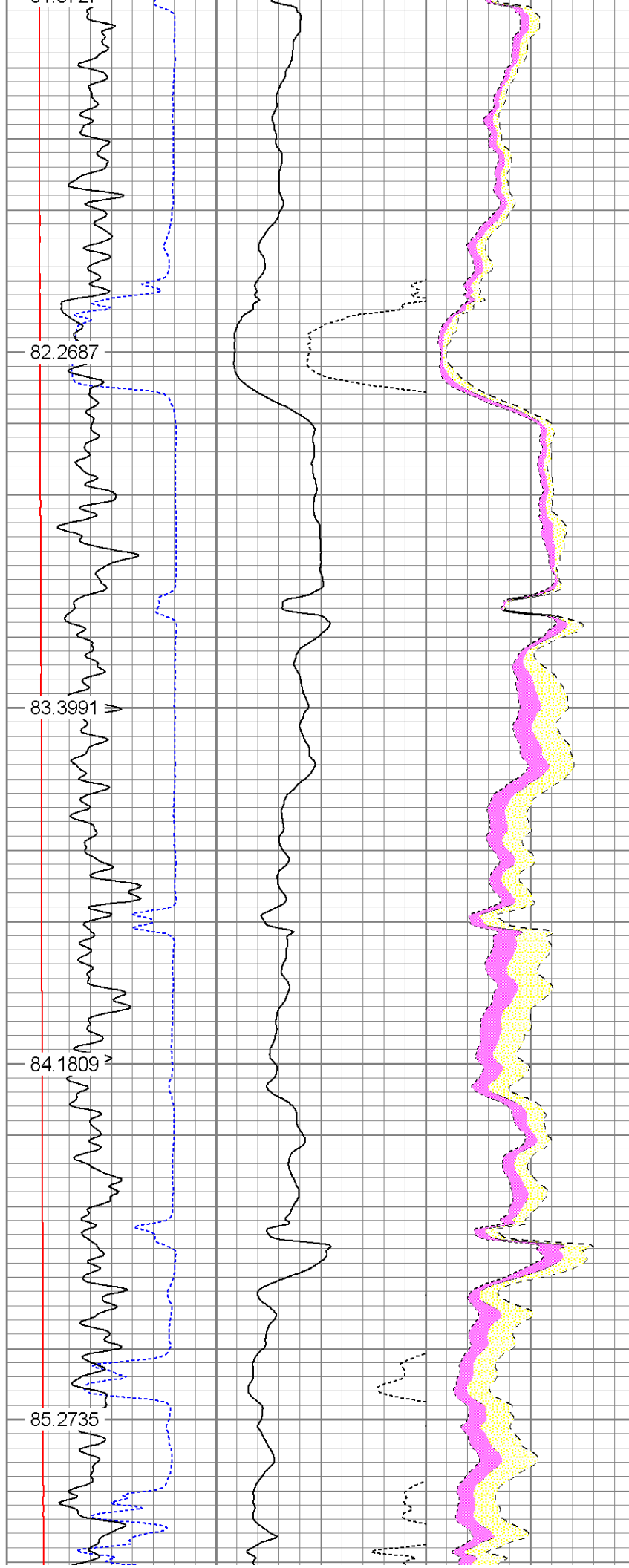
600

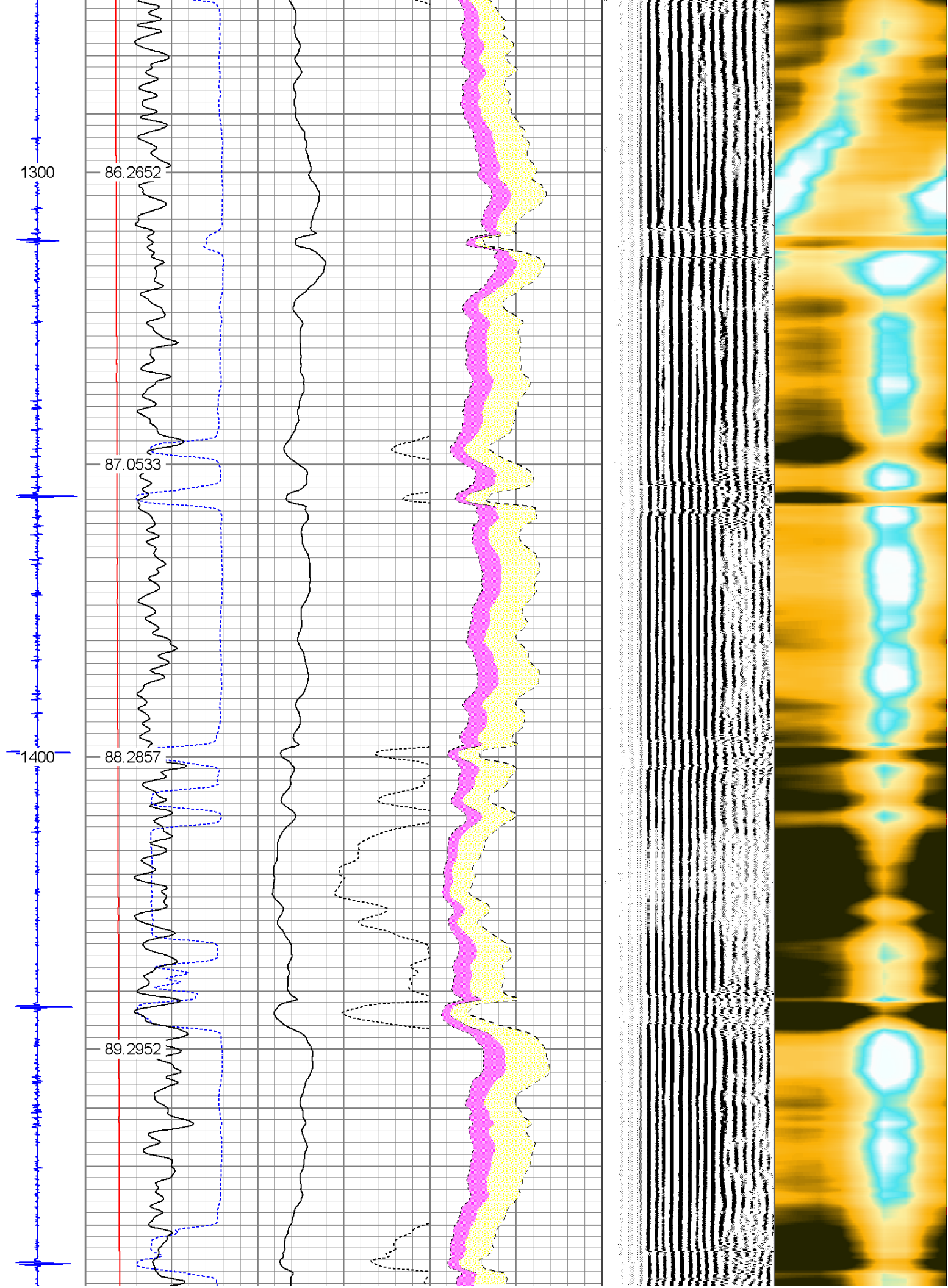
71.5477

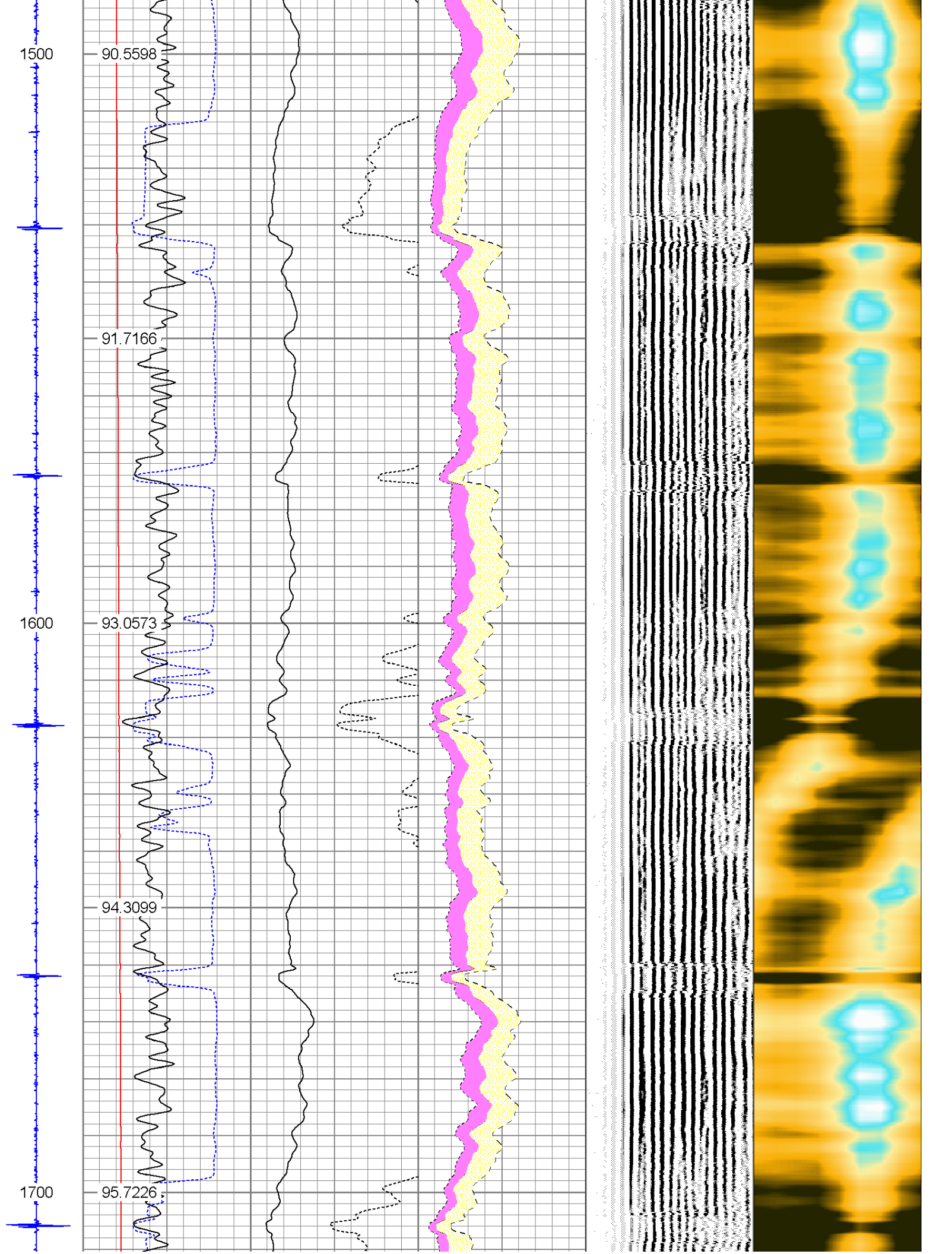


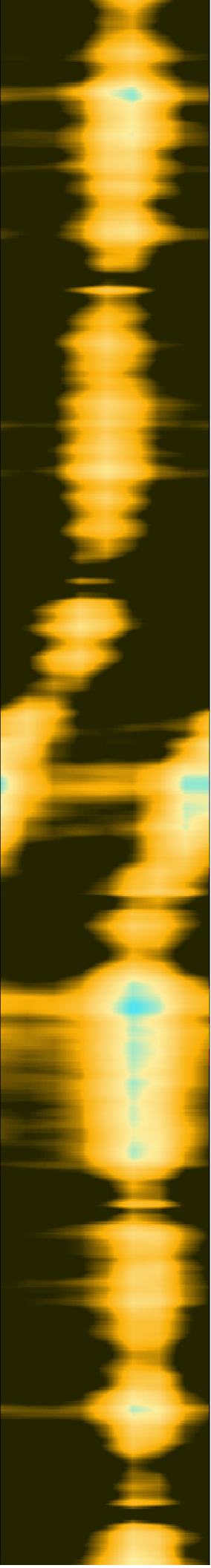
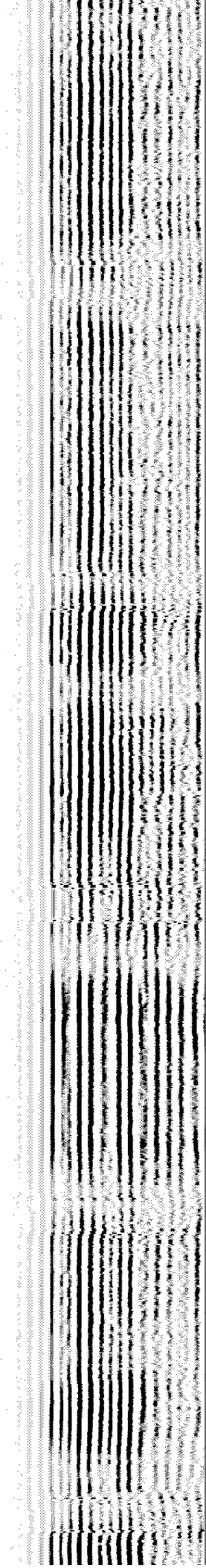
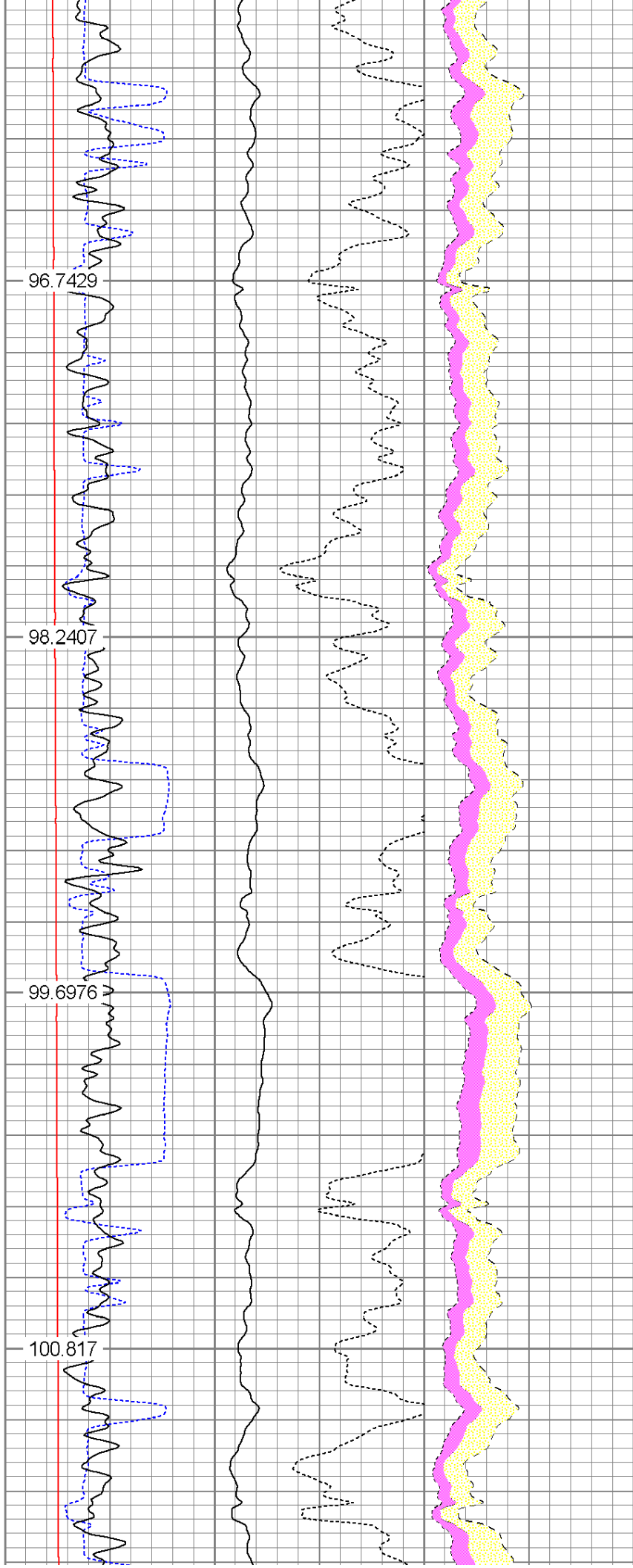
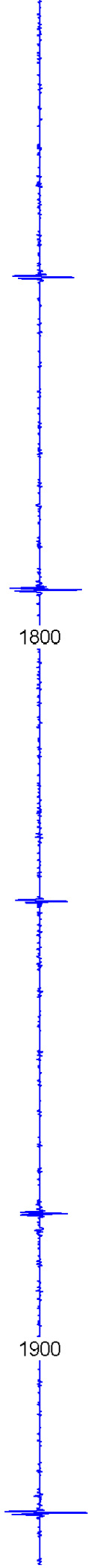


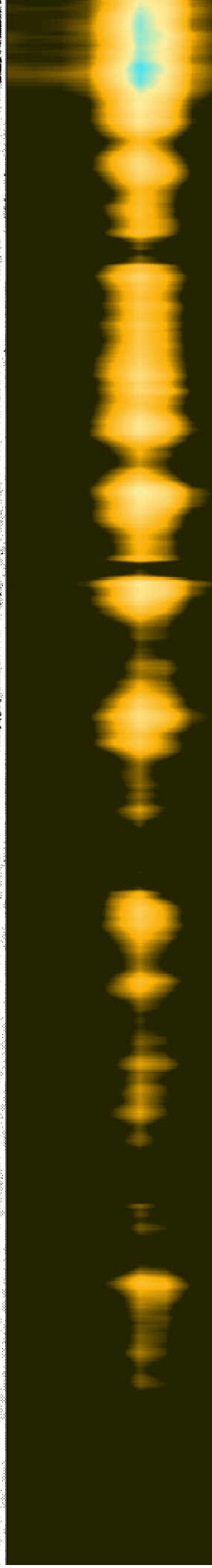
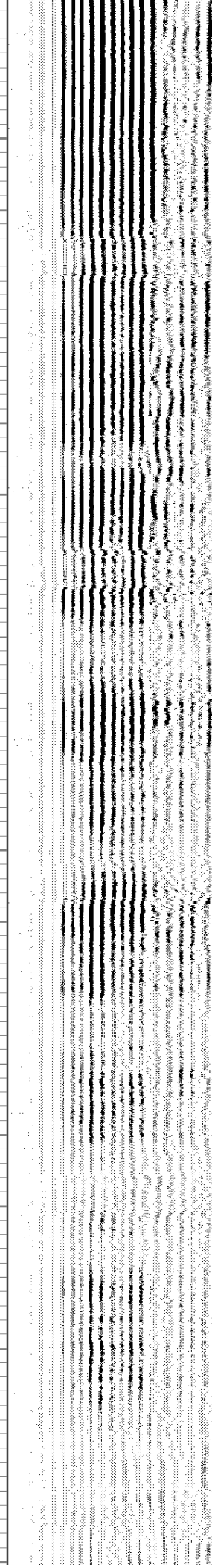
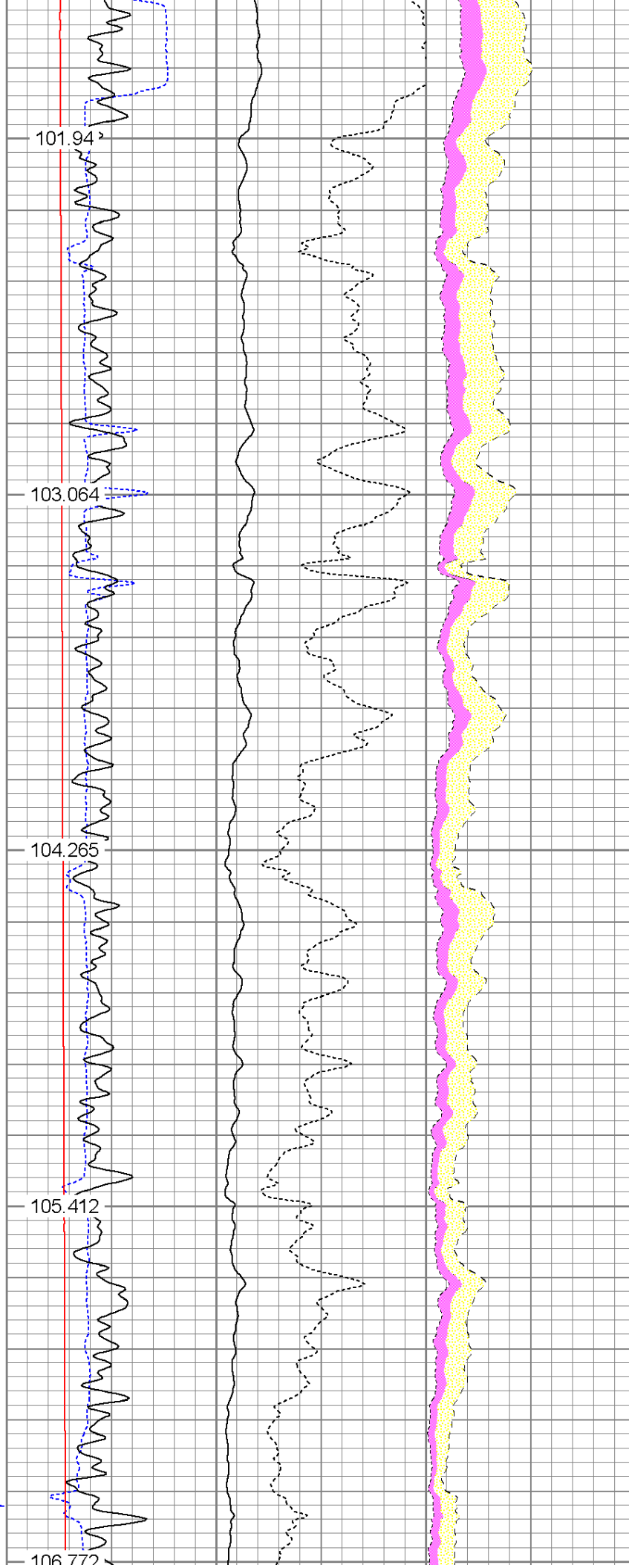
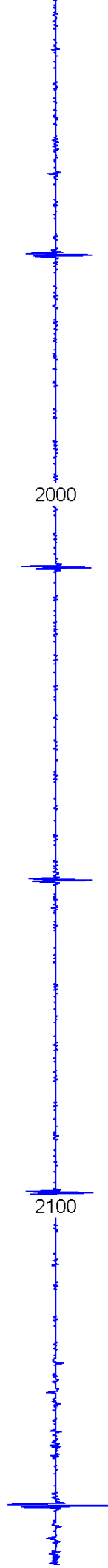


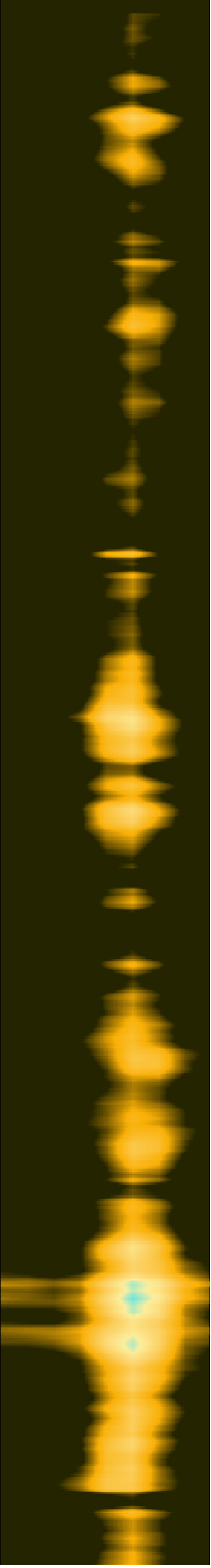
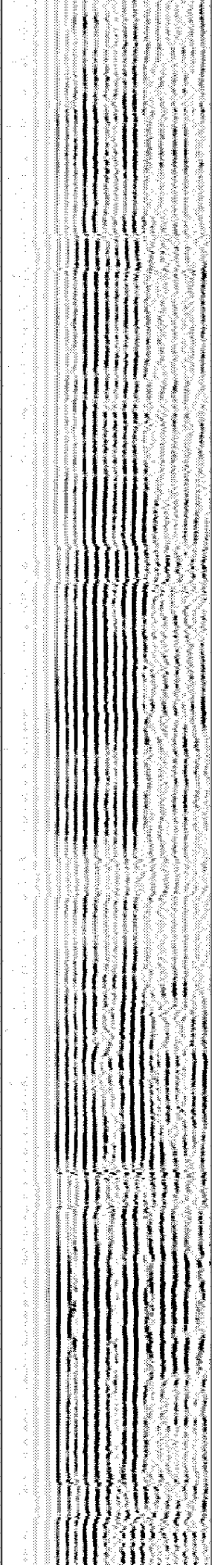
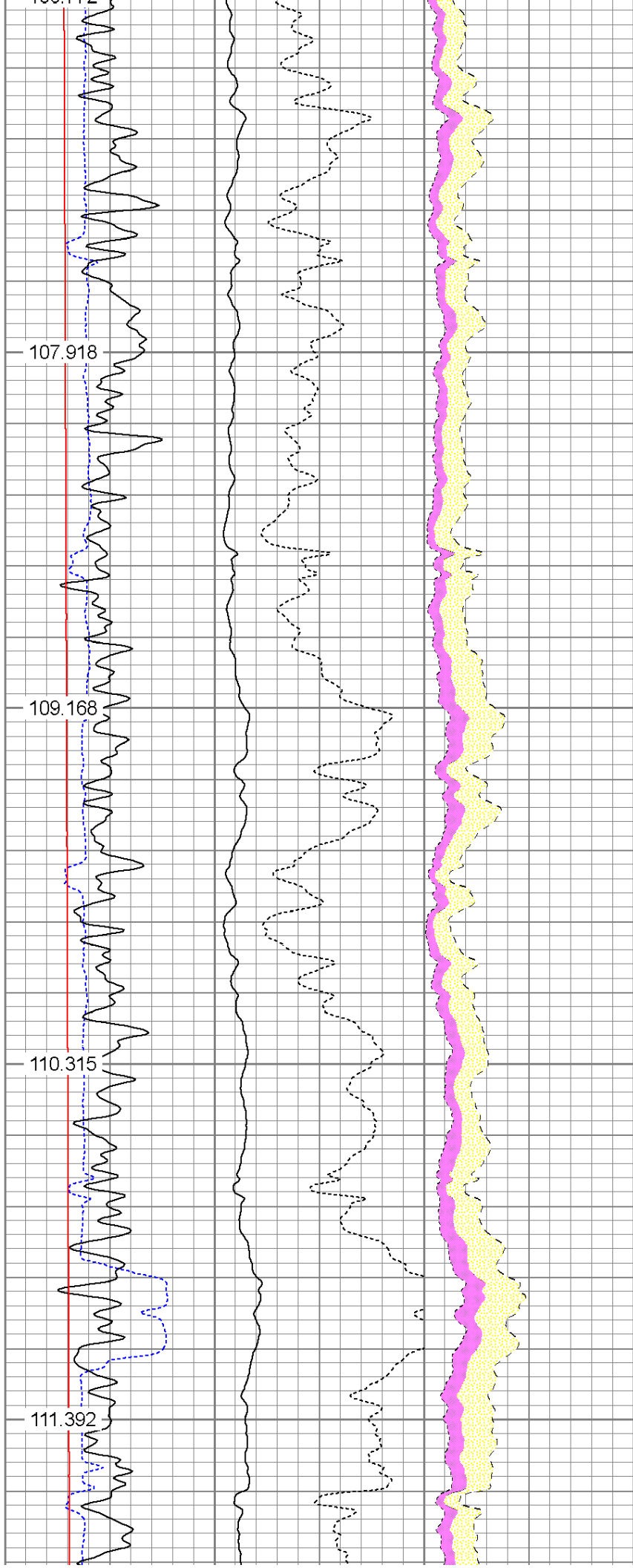
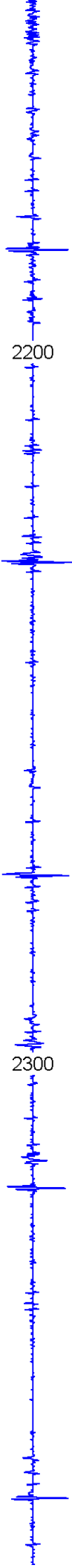


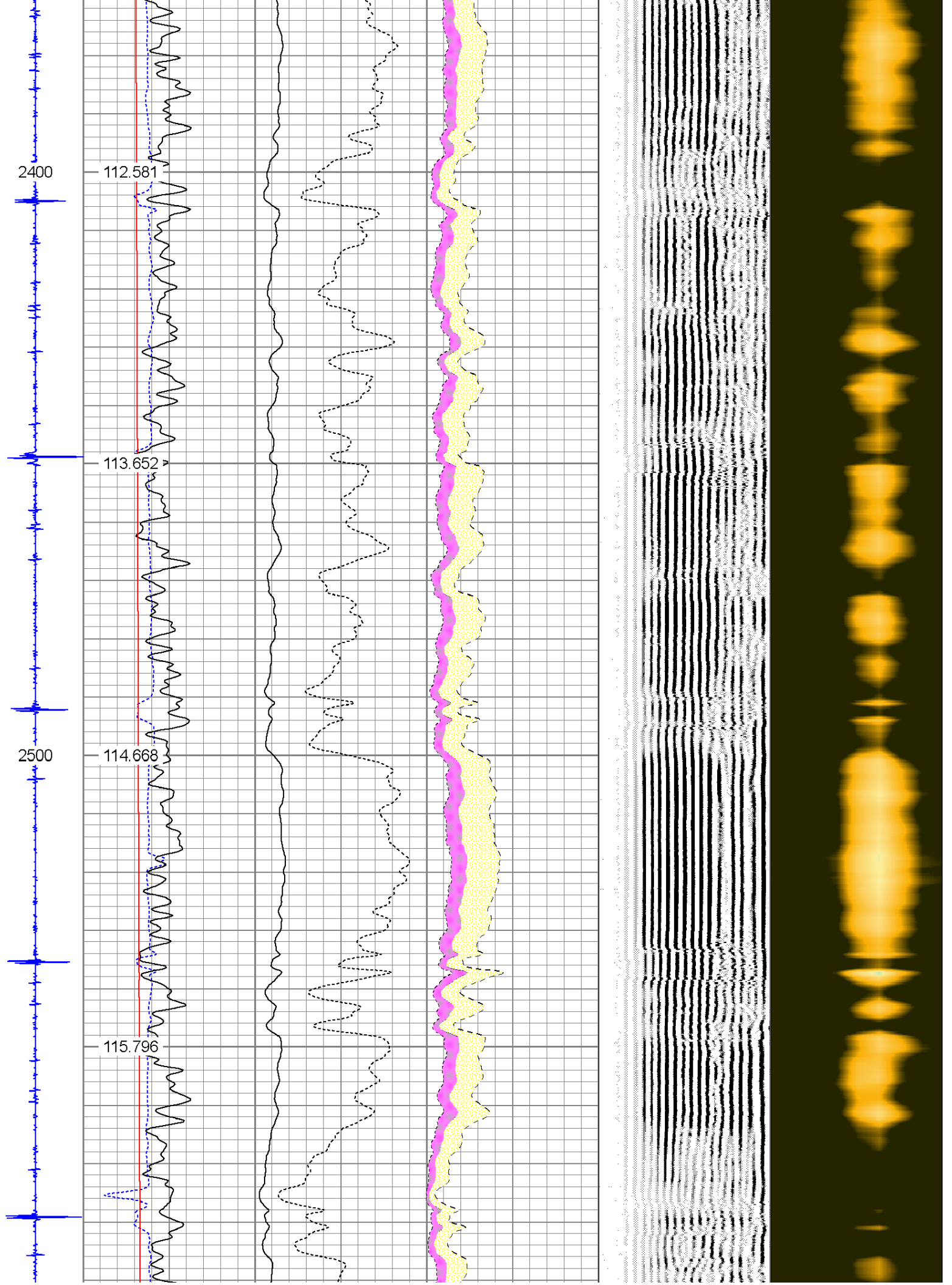


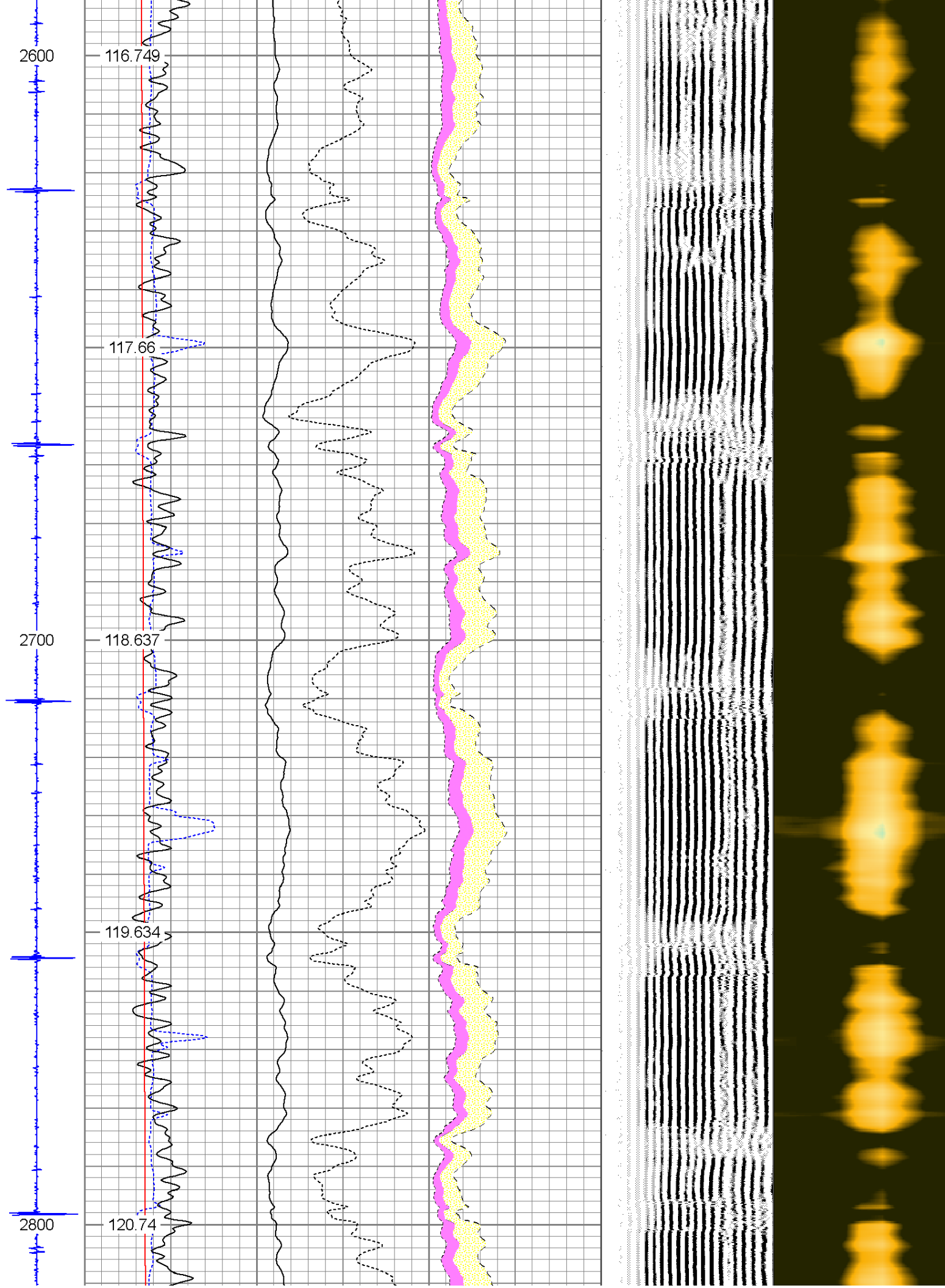


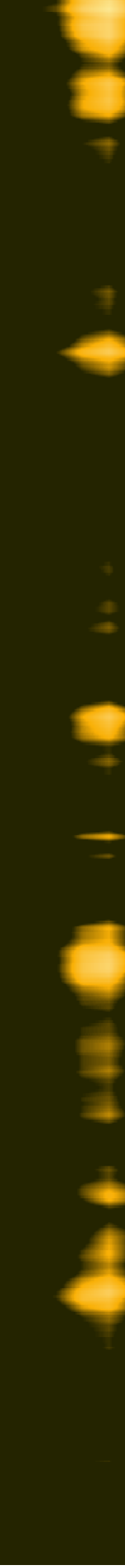
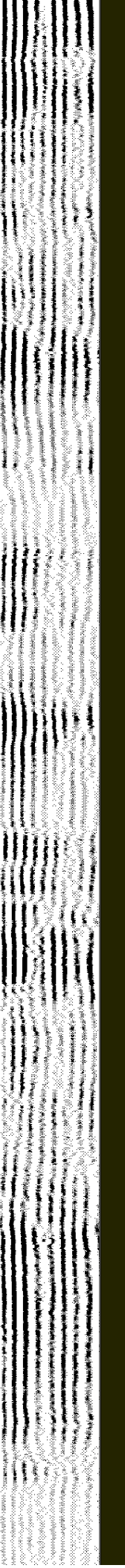
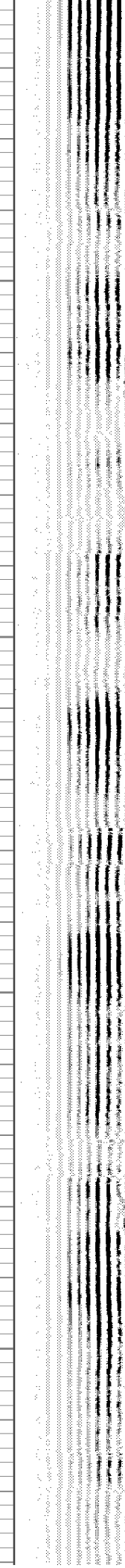
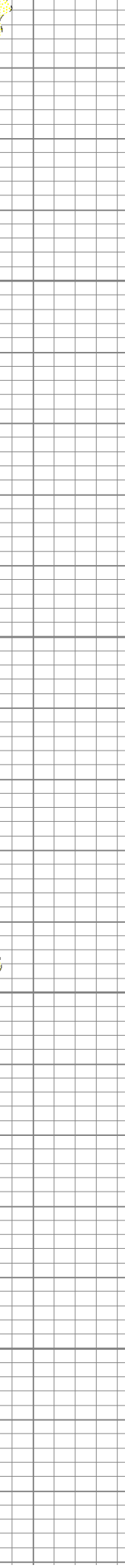
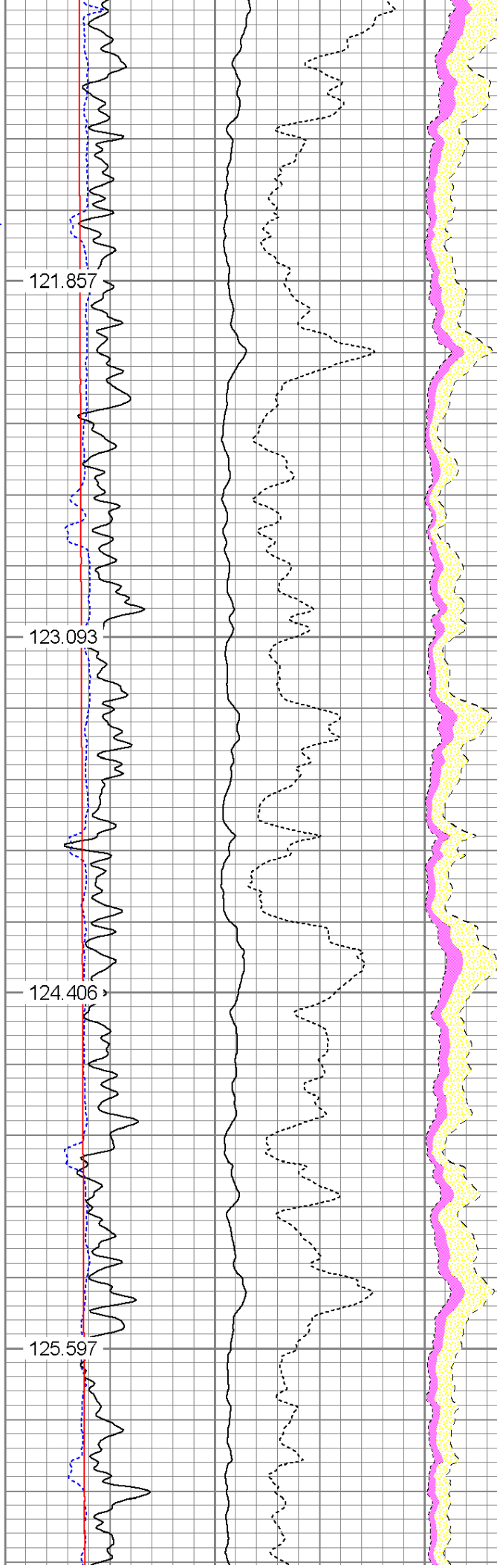
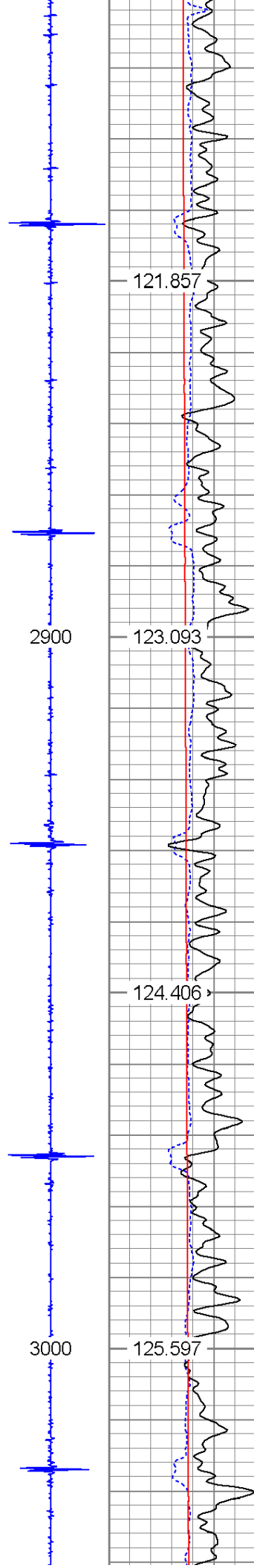


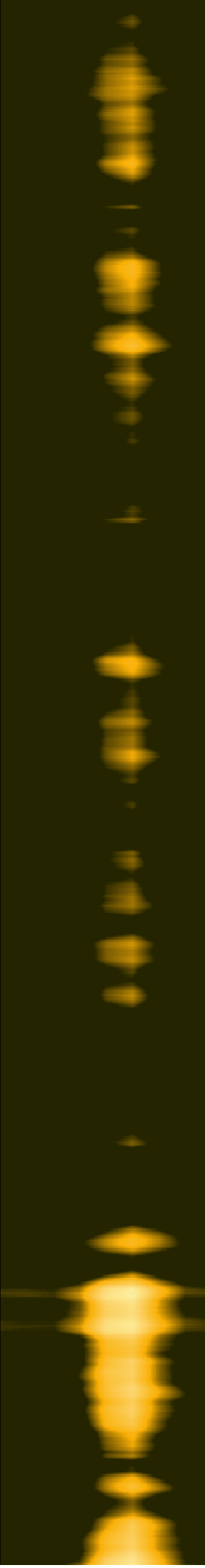
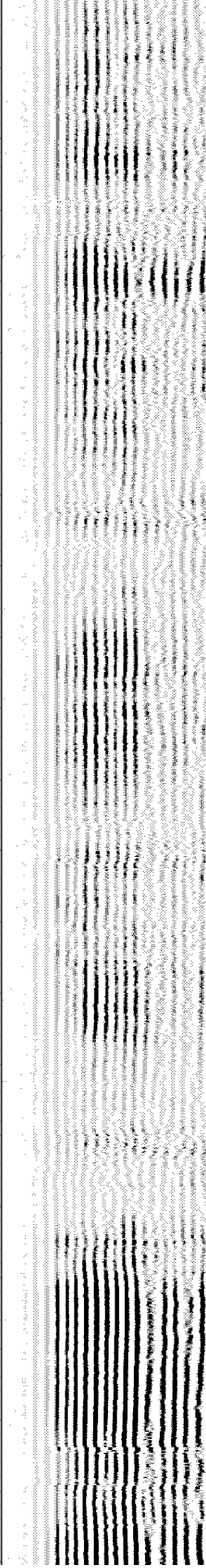
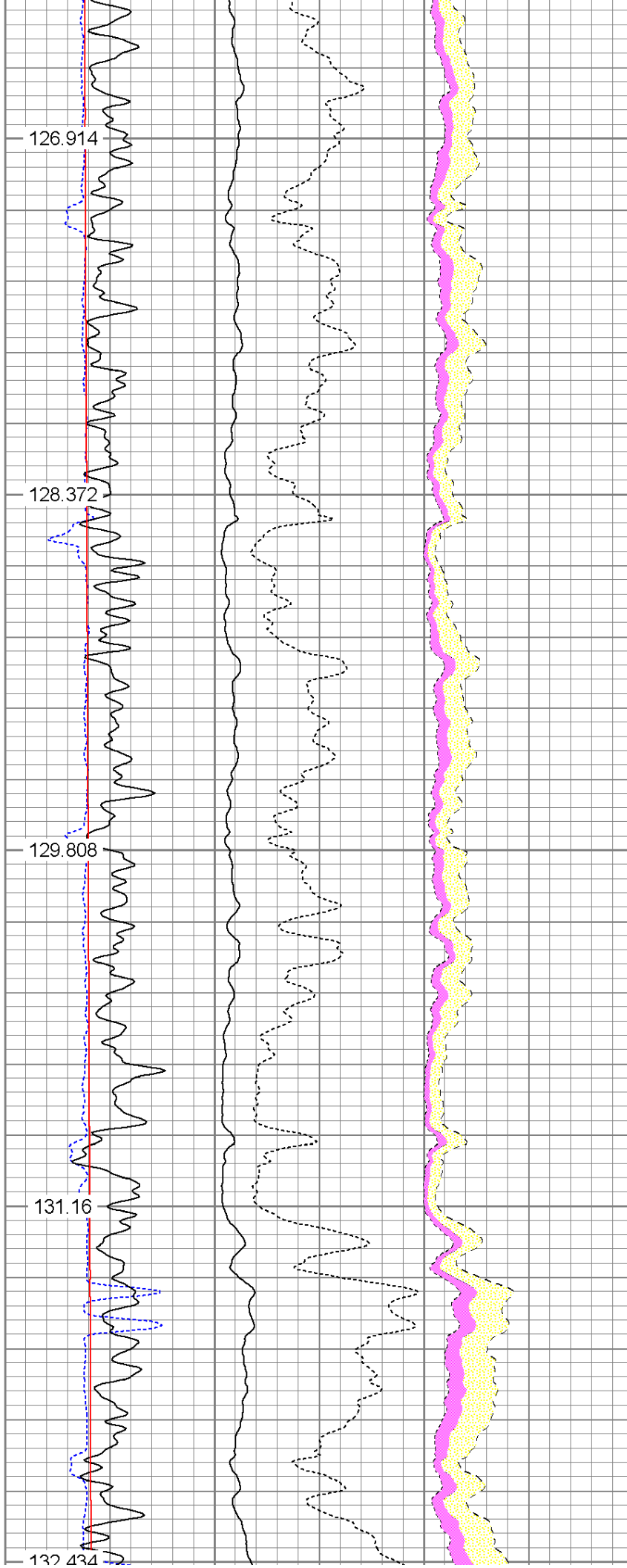












3300

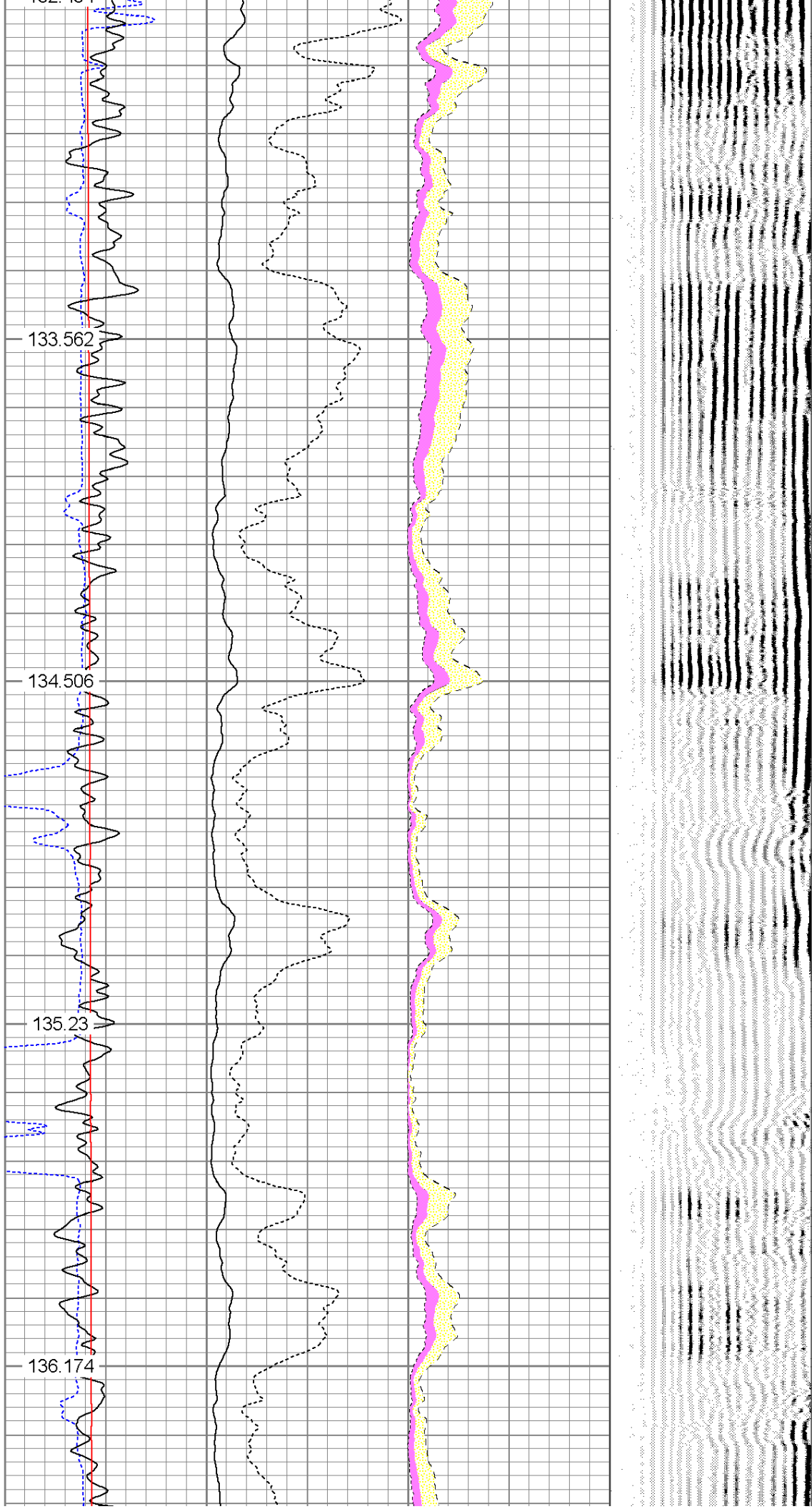
133.562

134.506

3400

135.23

136.174



3500-

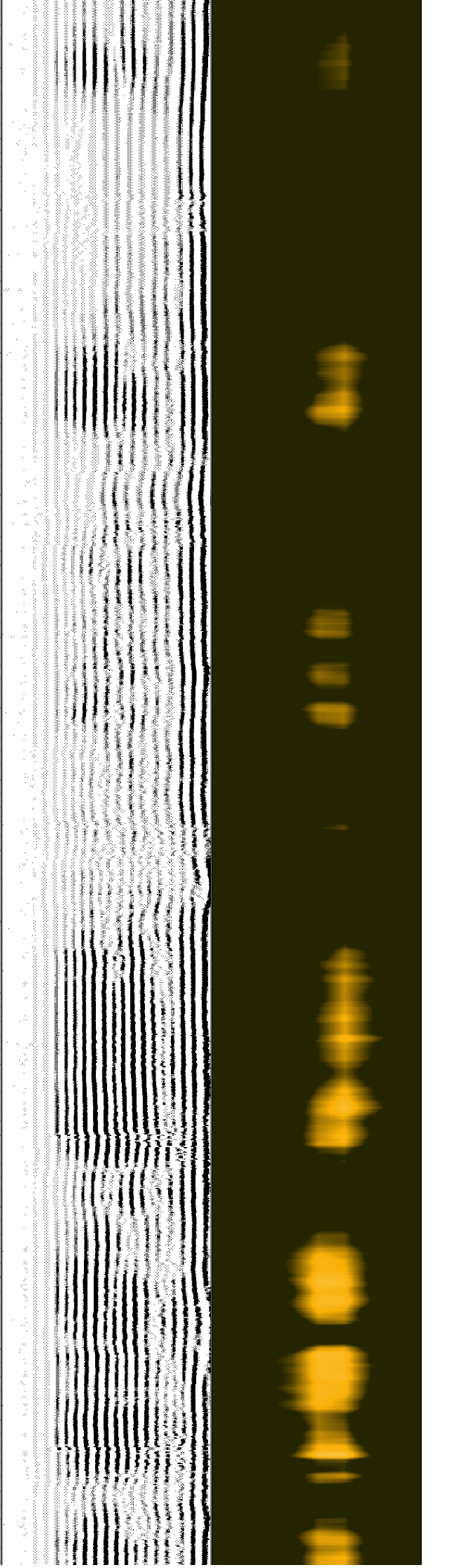
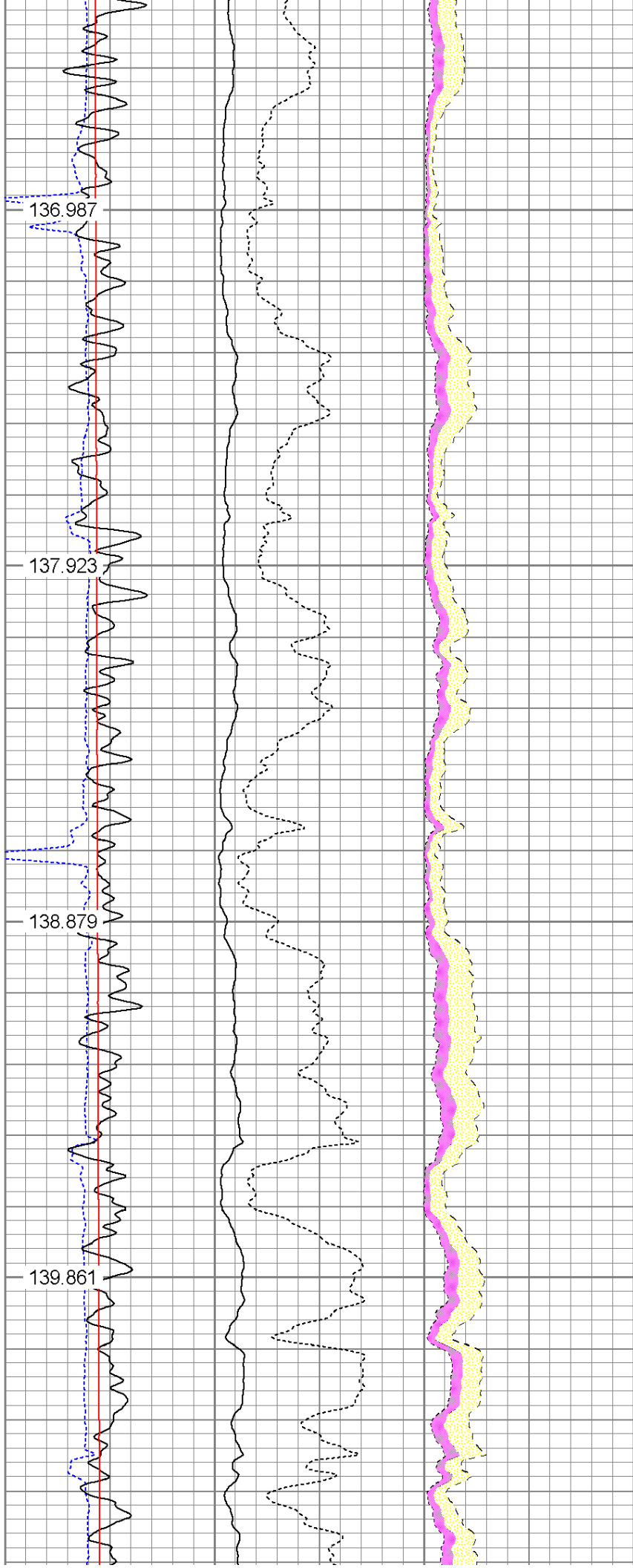
136.987

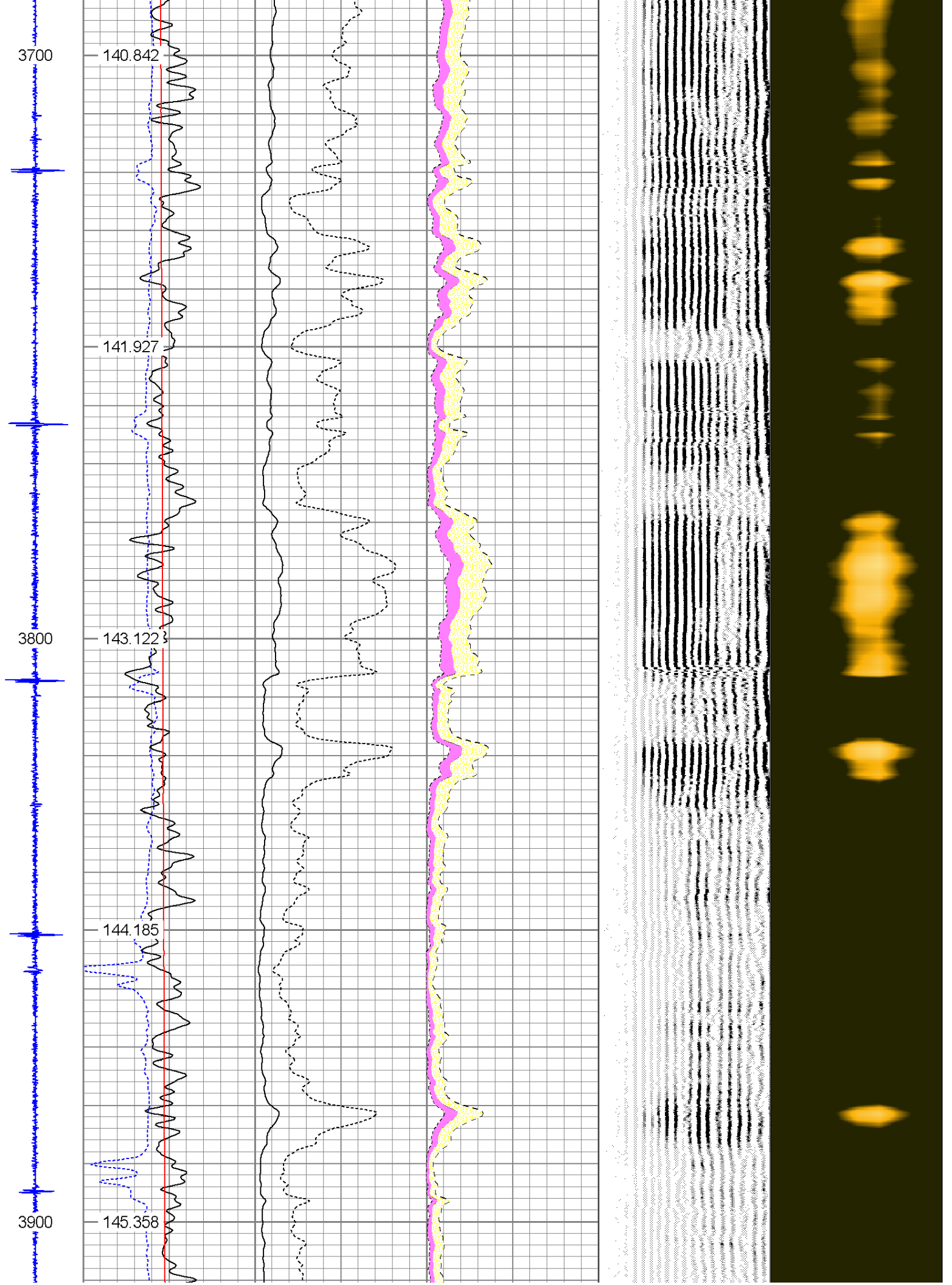
137.923

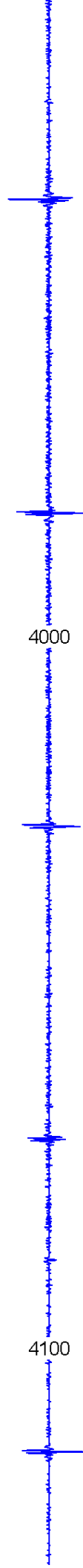
3600

138.879

139.861

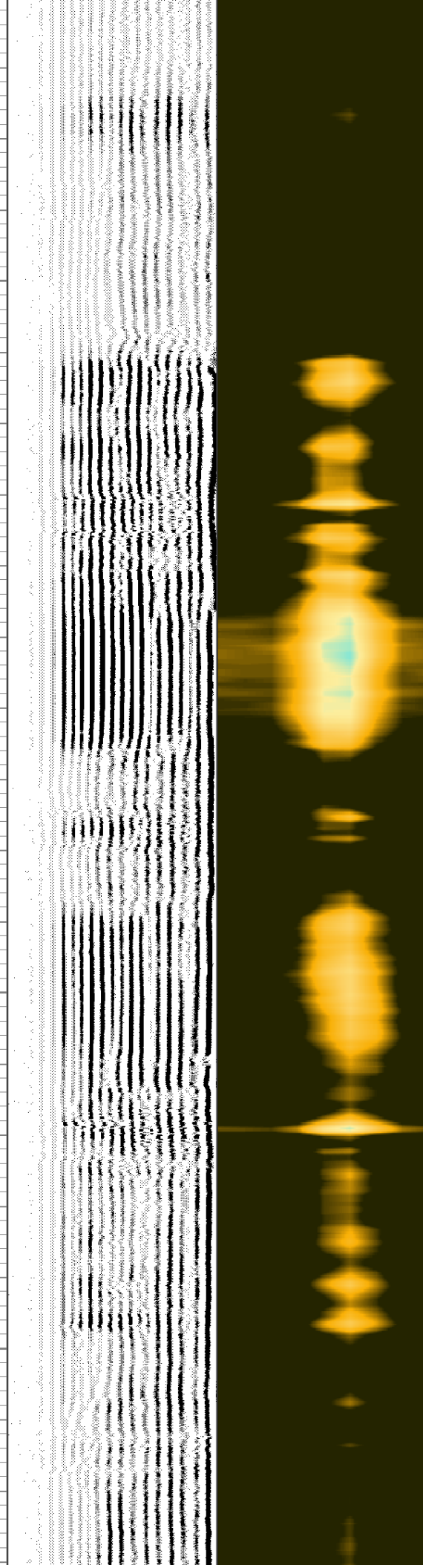
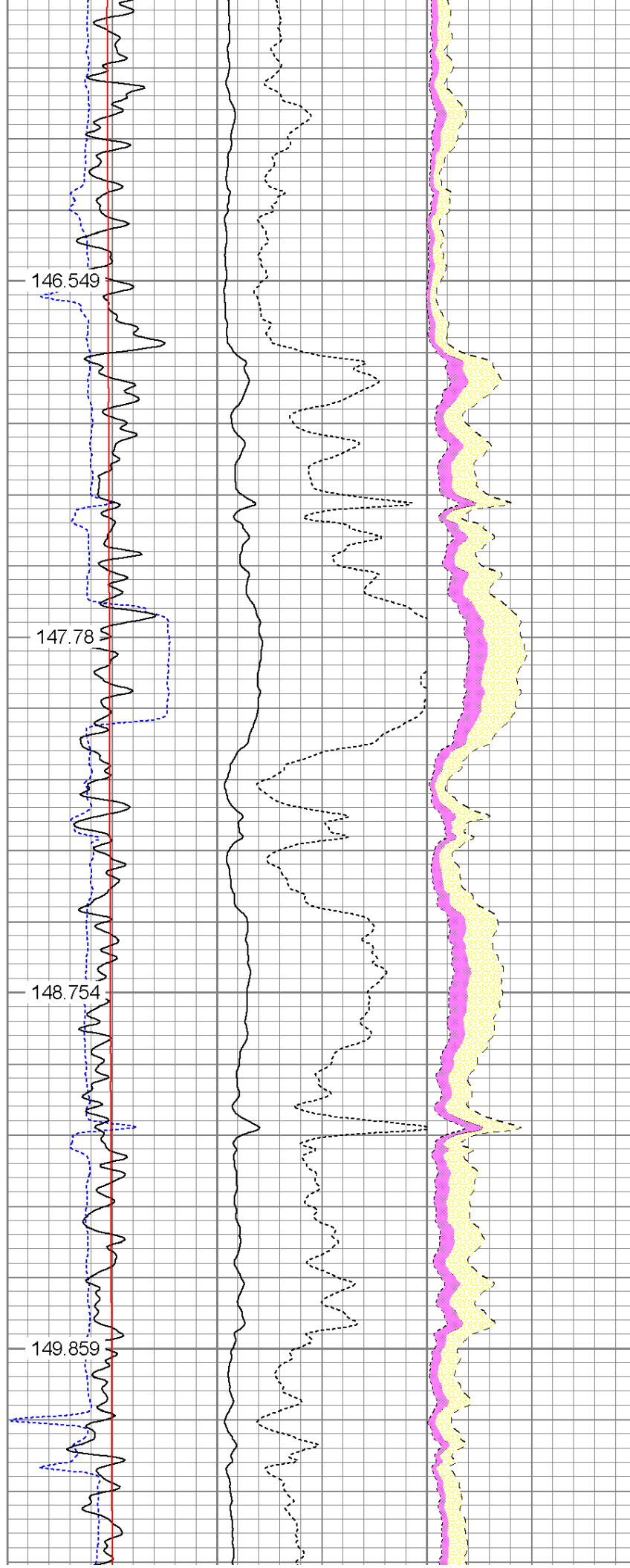






4000

4100



4200

4300

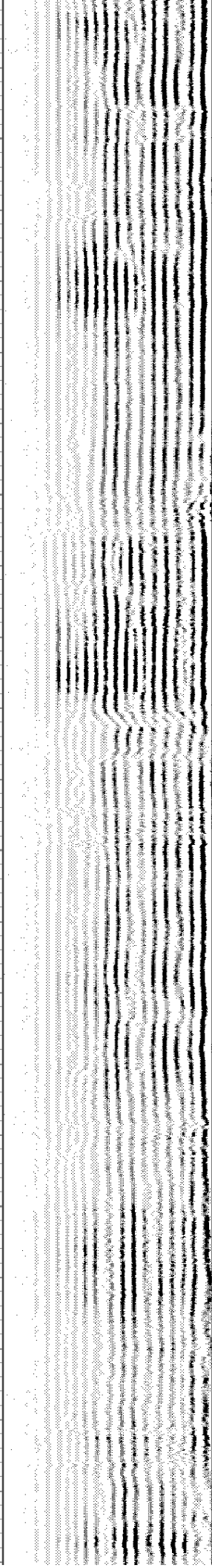
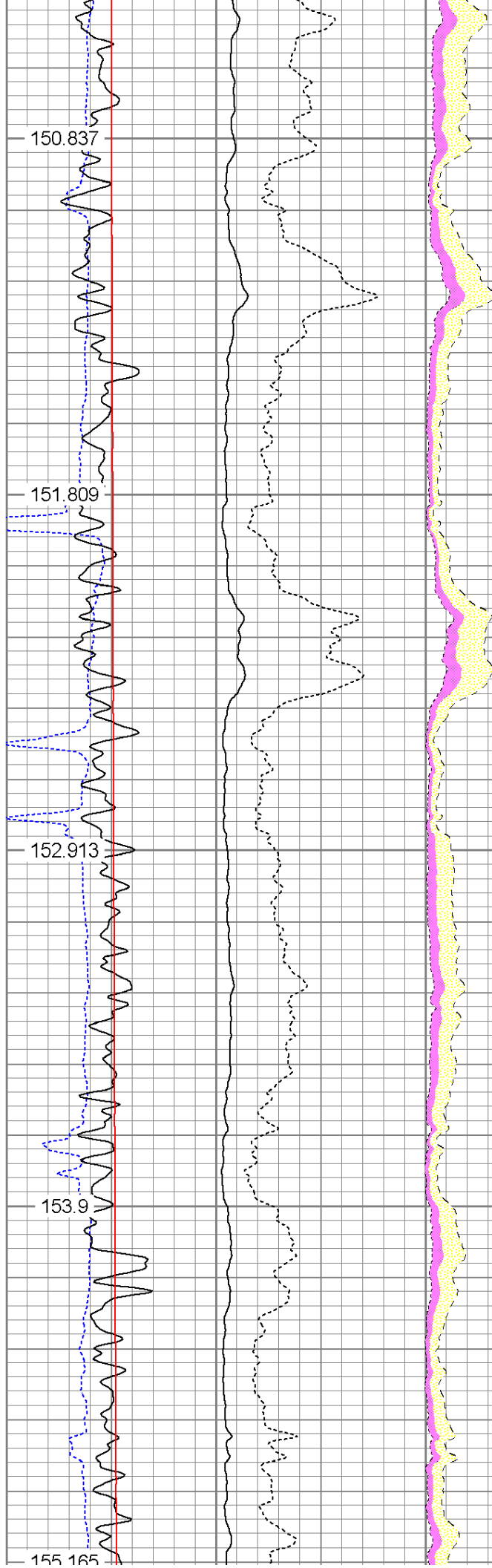
150.837

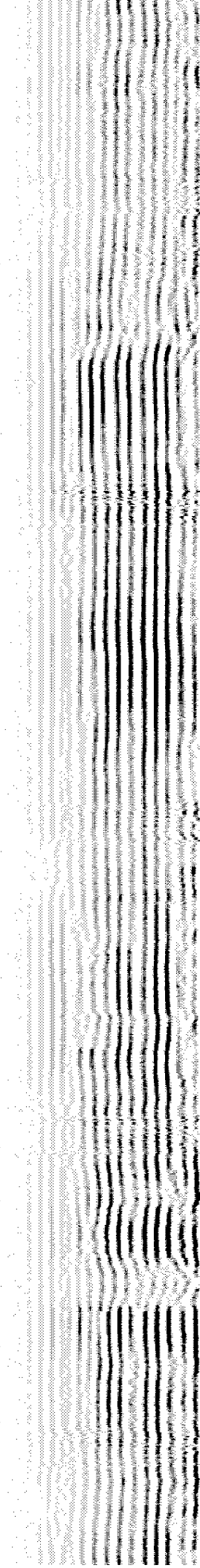
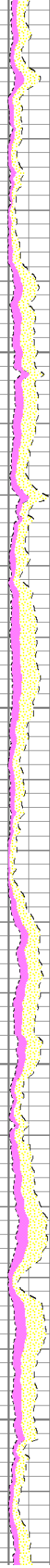
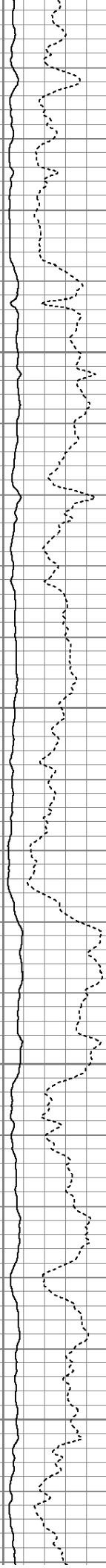
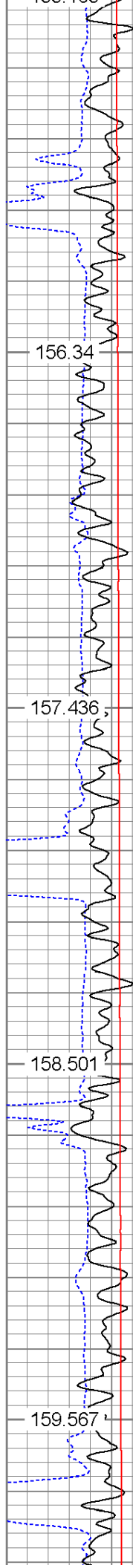
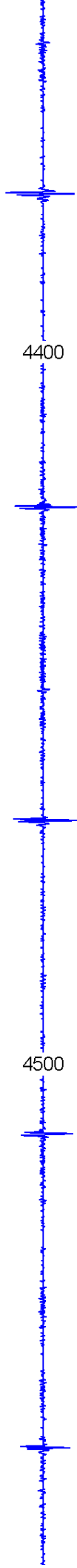
151.809

152.913

153.9

155.165





4600

160.763

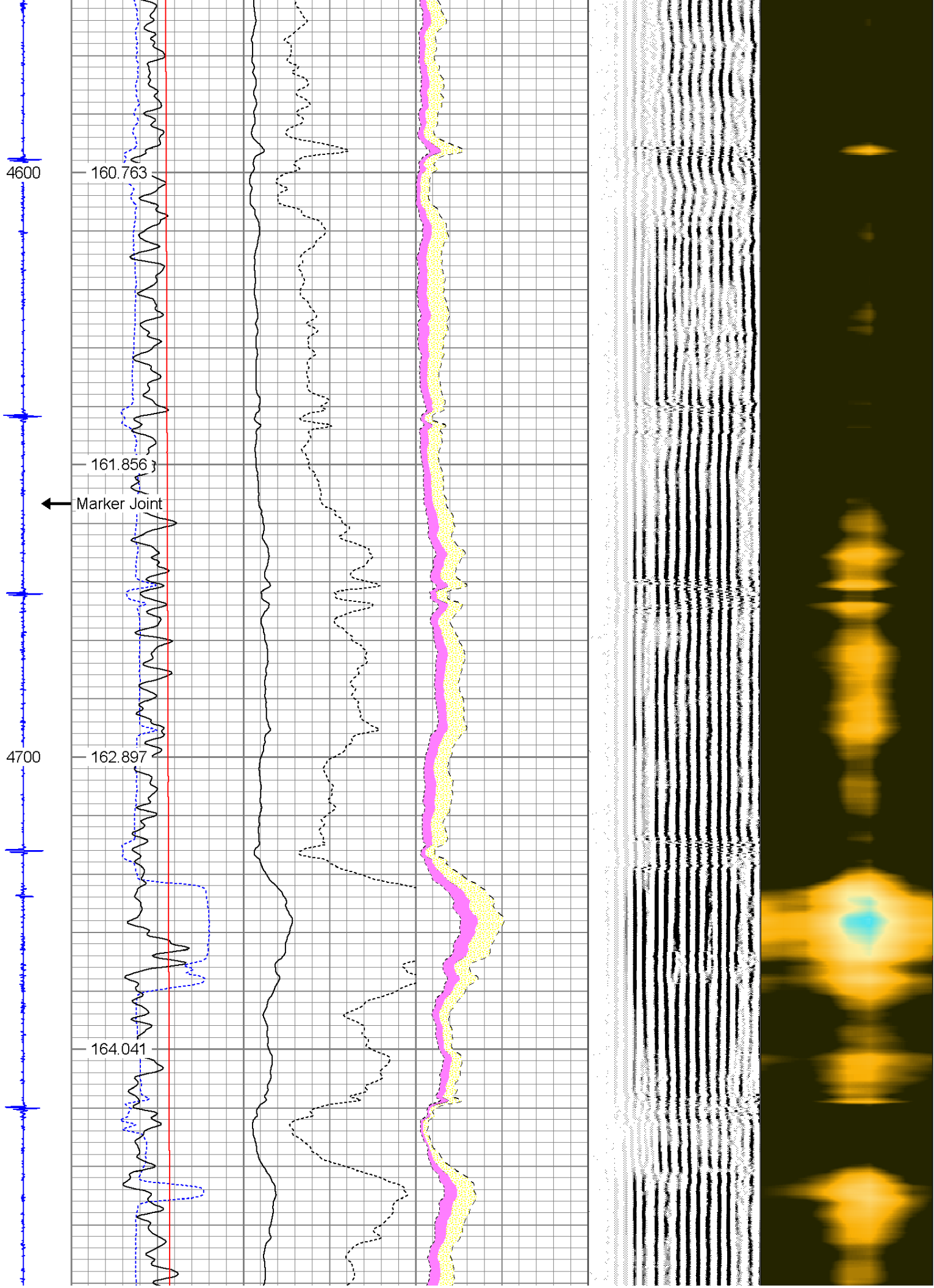
161.856

Marker Joint

4700

162.897

164.041



4800

4900

5000

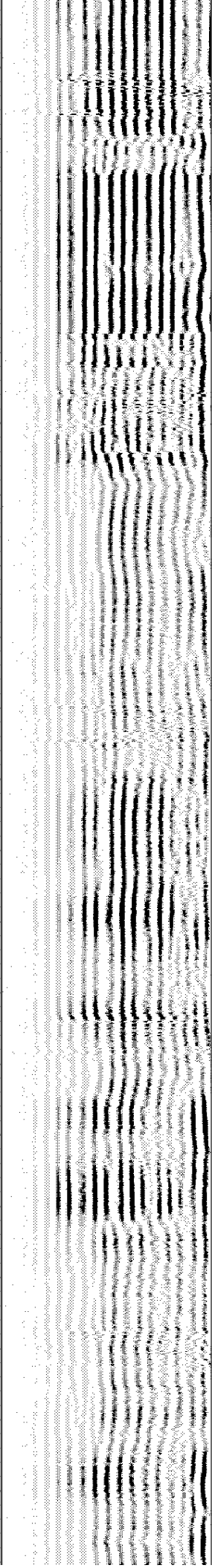
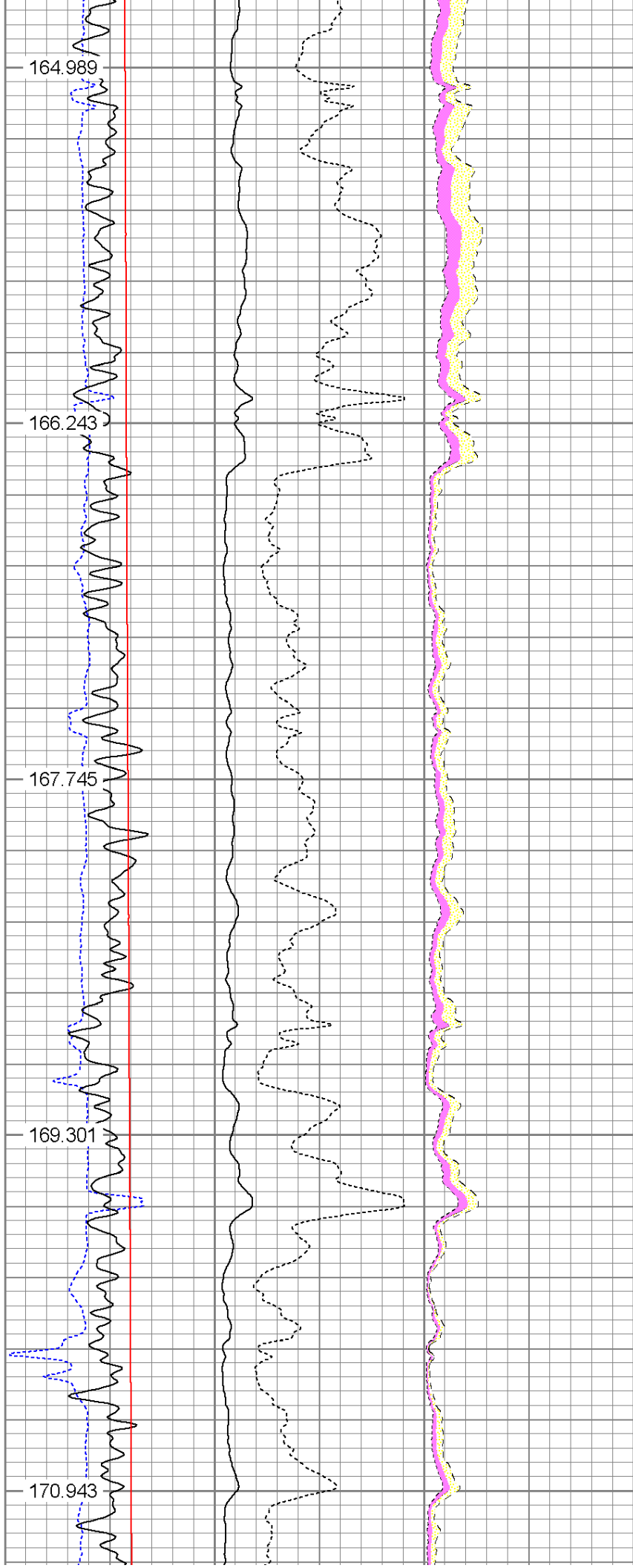
164.989

166.243

167.745

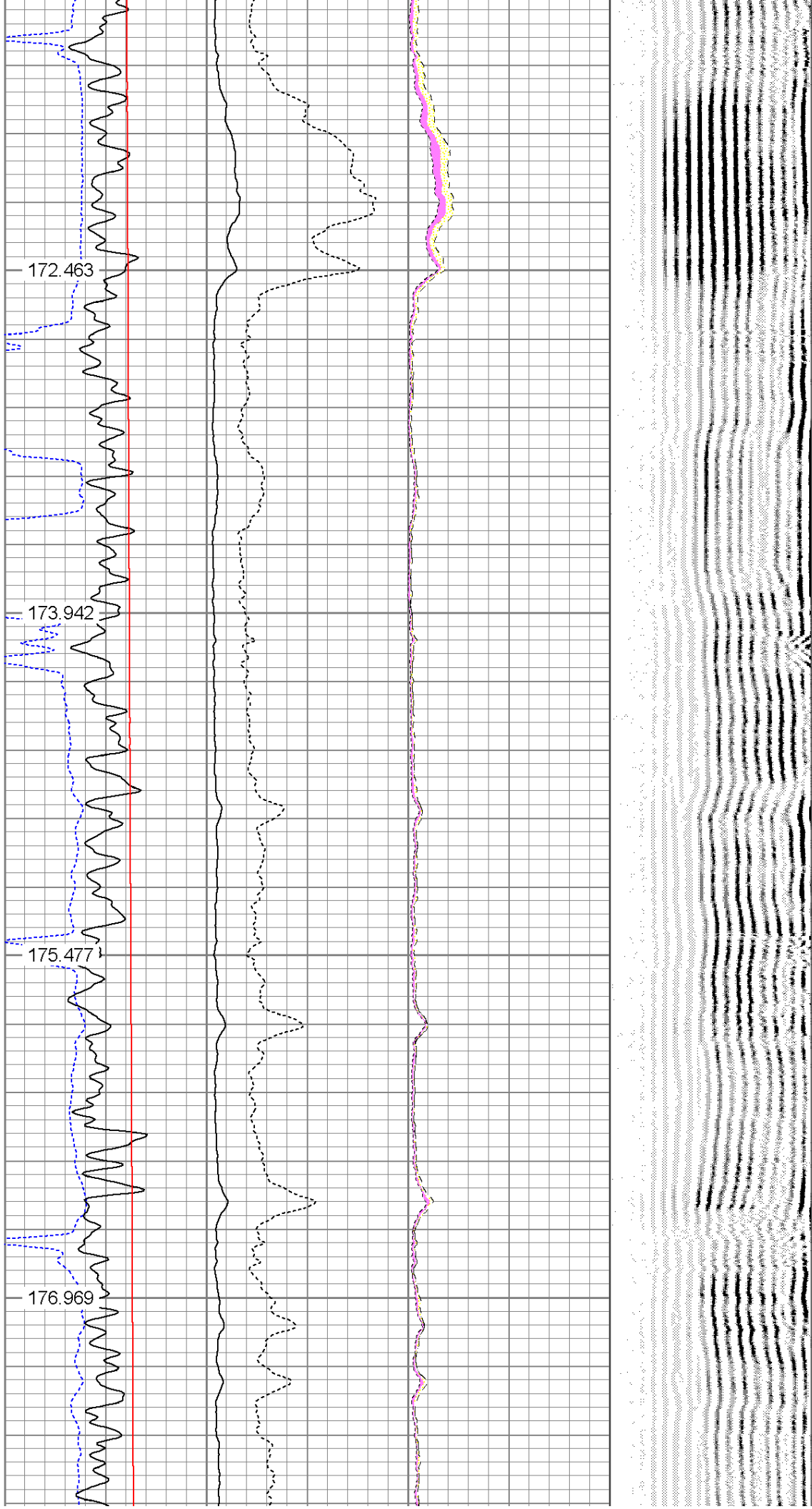
169.301

170.943



5100

5200



5300

5400

178.604

180.374

182.323

184.02

185.671

