



Bill Barrett Corp.  
Project: Weld Co., CO  
Site: Sec.2-T4N-R62W  
Well: Anschutz State 4-62-2-1721CH2  
Wellbore: Wellbore #1  
Design: Design #2  
Lat: 40° 20' 40.920 N  
Long: 104° 18' 6.170 W  
Pad GL: 4544.00  
KB: WELL @ 4566.00usft (Original Well Elev)

# Archer

## SECTION DETAILS

MD	Inc	Azi	TVD	+N/-S	+E/-W	Dleg	TFace	VSec	Annotation
729.00	0.29	79.09	728.97	-3.16	0.35	0.00	0.00	0.30	Start 171.00 hold at 729.00 MD
900.00	0.29	79.09	899.96	-2.99	1.20	0.00	0.00	1.15	Start DLS 2.00 TFO 139.14
1176.55	5.32	216.19	1176.14	-13.21	-5.68	2.00	139.14	-5.90	Start 3752.16 hold at 1176.55 MD
4928.72	5.32	216.19	4912.16	-293.73	-210.90	0.00	0.00	-215.79	Start Drop -2.00
5194.47	0.00	0.00	5177.54	-303.67	-218.17	2.00	180.00	-223.23	Start 500.00 hold at 5194.47 MD
5694.47	0.00	0.00	5677.54	-303.67	-218.17	0.00	0.00	-223.23	Start Build 12.00
6446.58	90.25	89.04	6155.00	-295.64	261.33	12.00	89.04	256.34	Start 7942.60 hold at 6446.58 MD
14389.18	90.25	89.04	6120.00	-162.56	8202.74	0.00	0.00	8198.87	TD at 14389.18

## WELL DETAILS: Anschutz State 4-62-2-1721CH2

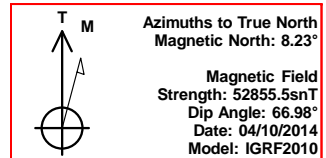
+N/-S	+E/-W	Northing	Ground Level: Easting	4544.00 Latitude	Longitude	Slot
0.00	0.00	1370671.613	3333997.127	40° 20' 40.920 N	104° 18' 6.170 W	

## PROJECT DETAILS: Weld Co., CO

Geodetic System: US State Plane 1983  
Datum: North American Datum 1983  
Ellipsoid: GRS 1980  
Zone: Colorado Northern Zone  
System Datum: Mean Sea Level

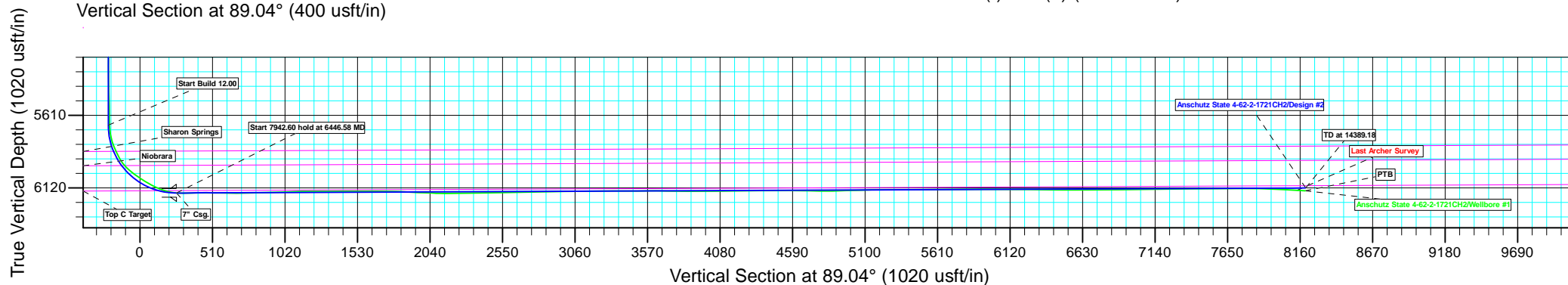
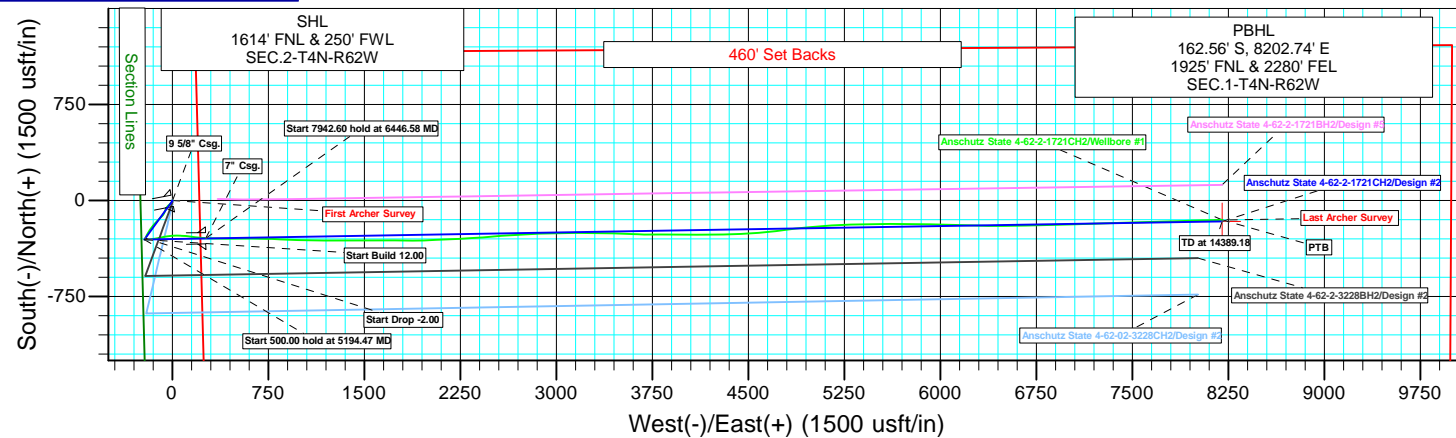
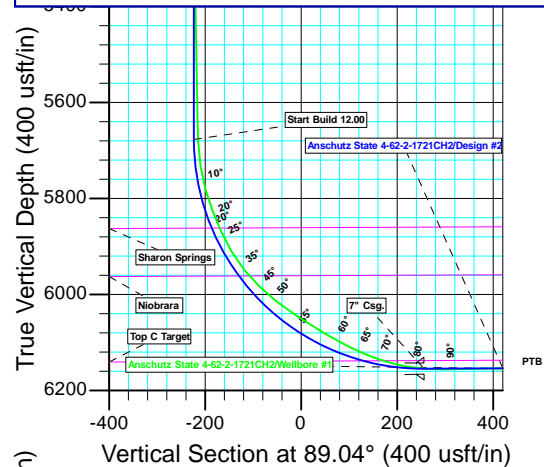
## CASING DETAILS

TVD	MD	Name
799.97	800.00	9 5/8" Csg.
6155.00	6446.58	7" Csg.



## WELLBORE TARGET DETAILS (LAT/LONG)

Name	TVD	+N/-S	+E/-W	Latitude	Longitude	Shape
Anschutz State4-62-2-1721CH2 tgt	6120.00	-162.56	8202.74	40° 20' 39.300 N	104° 16' 20.230 W	Point



Plan: Design #2 (Anschutz State 4-62-2-1721CH2/Wellbore #1)

Created By: Ricky Osburn Date: 14:29, May 12 2014



**Bill Barrett Corporation**

## **Bill Barrett Corp.**

Weld Co., CO

Sec.2-T4N-R62W

Anschutz State 4-62-2-1721CH2

Wellbore #1

Survey: Survey #1

## **Standard Survey Report**

12 May, 2014

# **Archer**

<b>Company:</b>	Bill Barrett Corp.	<b>Local Co-ordinate Reference:</b>	Well Anschutz State 4-62-2-1721CH2
<b>Project:</b>	Weld Co., CO	<b>TVD Reference:</b>	WELL @ 4566.00usft (Original Well Elev)
<b>Site:</b>	Sec.2-T4N-R62W	<b>MD Reference:</b>	WELL @ 4566.00usft (Original Well Elev)
<b>Well:</b>	Anschutz State 4-62-2-1721CH2	<b>North Reference:</b>	True
<b>Wellbore:</b>	Wellbore #1	<b>Survey Calculation Method:</b>	Minimum Curvature
<b>Design:</b>	Wellbore #1	<b>Database:</b>	EDMDBBW

<b>Project</b>	Weld Co., CO		
<b>Map System:</b>	US State Plane 1983	<b>System Datum:</b>	Mean Sea Level
<b>Geo Datum:</b>	North American Datum 1983		
<b>Map Zone:</b>	Colorado Northern Zone		

Site		Sec.2-T4N-R62W			
Site Position:		Northing:	1,370,686.920 usft	Latitude:	40° 20' 41.071 N
From:	Lat/Long	Easting:	3,333,996.920 usft	Longitude:	104° 18' 6.170 W
Position Uncertainty:	0.00 usft	Slot Radius:	13-3/16"	Grid Convergence:	0.77 °

Well	Anschutz State 4-62-2-1721CH2					
Well Position	+N/-S	0.00 usft	Northing:	1,370,671.613 usft	Latitude:	40° 20' 40.920 N
	+E/-W	0.00 usft	Easting:	3,333,997.127 usft	Longitude:	104° 18' 6.170 W
Position Uncertainty		0.00 usft	Wellhead Elevation:	usft	Ground Level:	4,544.00 usft

<b>Wellbore</b>	Wellbore #1				
<b>Magnetics</b>	<b>Model Name</b>	<b>Sample Date</b>	<b>Declination (°)</b>	<b>Dip Angle (°)</b>	<b>Field Strength (nT)</b>
	IGRF2010	2014/04/10	8.23	66.98	52,855

<b>Design</b>	Wellbore #1				
<b>Audit Notes:</b>					
<b>Version:</b>	1.0	<b>Phase:</b>	ACTUAL	<b>Tie On Depth:</b>	0.00
<b>Vertical Section:</b>	<b>Depth From (TVD) (usft)</b>	<b>+N/-S (usft)</b>	<b>+E/-W (usft)</b>	<b>Direction (°)</b>	
	0.00	0.00	0.00	89.04	

<b>Survey Program</b>	<b>Date</b>	2014/05/12			
<b>From (usft)</b>	<b>To (usft)</b>	<b>Survey (Wellbore)</b>	<b>Tool Name</b>	<b>Description</b>	
100.00	14,375.00	Survey #1 (Wellbore #1)	MWD	MWD - Standard	

<b>Survey</b>										
<b>Measured Depth (usft)</b>	<b>Inclination (°)</b>	<b>Azimuth (°)</b>	<b>Vertical Depth (usft)</b>	<b>+N/-S (usft)</b>	<b>+E/-W (usft)</b>	<b>Vertical Section (usft)</b>	<b>Dogleg Rate (°/100usft)</b>	<b>Build Rate (°/100usft)</b>	<b>Turn Rate (°/100usft)</b>	
0.00	0.00	0.00	0.00	0.00	0.00	0.00	0.00	0.00	0.00	
<b>First Archer Survey</b>										
100.00	0.62	259.20	100.00	-0.10	-0.53	-0.53	0.62	0.62	0.00	
200.00	0.96	181.52	199.99	-1.04	-1.09	-1.10	1.03	0.34	-77.68	
300.00	1.23	155.96	299.97	-2.86	-0.67	-0.72	0.55	0.27	-25.56	
400.00	0.37	100.06	399.96	-3.89	0.09	0.02	1.07	-0.86	-55.90	
500.00	0.63	178.58	499.96	-4.50	0.42	0.34	0.66	0.26	78.52	
600.00	0.42	68.95	599.96	-4.92	0.77	0.69	0.87	-0.21	-109.63	
700.00	0.21	52.17	699.96	-4.67	1.26	1.18	0.23	-0.21	-16.78	
729.00	0.29	79.09	728.96	-4.63	1.37	1.30	0.48	0.28	92.83	
863.00	0.50	186.60	862.95	-5.14	1.64	1.55	0.48	0.16	80.23	
955.00	3.10	226.50	954.90	-7.26	-0.21	-0.33	2.97	2.83	43.37	
1,046.00	5.30	220.60	1,045.65	-12.14	-4.73	-4.94	2.46	2.42	-6.48	

<b>Company:</b>	Bill Barrett Corp.	<b>Local Co-ordinate Reference:</b>	Well Anschutz State 4-62-2-1721CH2
<b>Project:</b>	Weld Co., CO	<b>TVD Reference:</b>	WELL @ 4566.00usft (Original Well Elev)
<b>Site:</b>	Sec.2-T4N-R62W	<b>MD Reference:</b>	WELL @ 4566.00usft (Original Well Elev)
<b>Well:</b>	Anschutz State 4-62-2-1721CH2	<b>North Reference:</b>	True
<b>Wellbore:</b>	Wellbore #1	<b>Survey Calculation Method:</b>	Minimum Curvature
<b>Design:</b>	Wellbore #1	<b>Database:</b>	EDMDBBW

Survey										
Measured Depth (usft)	Inclination (°)	Azimuth (°)	Vertical Depth (usft)	+N/-S (usft)	+E/-W (usft)	Vertical Section (usft)	Dogleg Rate (°/100usft)	Build Rate (°/100usft)	Turn Rate (°/100usft)	
1,138.00	5.50	222.60	1,137.24	-18.61	-10.48	-10.79	0.30	0.22	2.17	
1,230.00	5.30	224.60	1,228.84	-24.88	-16.45	-16.86	0.30	-0.22	2.17	
1,321.00	5.10	227.50	1,319.46	-30.61	-22.38	-22.89	0.36	-0.22	3.19	
1,414.00	4.40	230.60	1,412.14	-35.67	-28.19	-28.78	0.80	-0.75	3.33	
1,506.00	7.00	221.80	1,503.68	-42.09	-34.65	-35.35	2.97	2.83	-9.57	
1,599.00	7.00	219.40	1,595.99	-50.69	-42.03	-42.87	0.31	0.00	-2.58	
1,690.00	7.50	206.00	1,686.27	-60.31	-48.15	-49.15	1.93	0.55	-14.73	
1,781.00	7.30	202.60	1,776.51	-70.99	-52.98	-54.16	0.53	-0.22	-3.74	
1,873.00	7.00	200.40	1,867.79	-81.64	-57.18	-58.54	0.44	-0.33	-2.39	
1,965.00	6.90	197.60	1,959.12	-92.16	-60.80	-62.34	0.38	-0.11	-3.04	
2,056.00	6.80	211.50	2,049.47	-101.97	-65.27	-66.97	1.82	-0.11	15.27	
2,147.00	6.70	213.50	2,139.84	-110.99	-71.01	-72.86	0.28	-0.11	2.20	
2,239.00	6.90	226.50	2,231.20	-119.27	-77.98	-79.97	1.68	0.22	14.13	
2,331.00	6.40	225.90	2,322.58	-126.64	-85.68	-87.79	0.55	-0.54	-0.65	
2,426.00	6.50	223.60	2,416.98	-134.22	-93.19	-95.42	0.29	0.11	-2.42	
2,521.00	6.20	224.30	2,511.40	-141.78	-100.48	-102.84	0.33	-0.32	0.74	
2,616.00	6.00	223.90	2,605.86	-149.03	-107.50	-109.98	0.22	-0.21	-0.42	
2,711.00	6.10	224.20	2,700.33	-156.23	-114.46	-117.07	0.11	0.11	0.32	
2,806.00	5.80	223.50	2,794.82	-163.33	-121.29	-124.01	0.32	-0.32	-0.74	
2,901.00	5.10	226.20	2,889.39	-169.73	-127.64	-130.47	0.78	-0.74	2.84	
2,996.00	6.30	218.90	2,983.92	-176.71	-133.96	-136.90	1.47	1.26	-7.68	
3,092.00	6.20	218.10	3,079.35	-184.89	-140.47	-143.55	0.14	-0.10	-0.83	
3,187.00	6.00	219.30	3,173.81	-192.77	-146.78	-149.99	0.25	-0.21	1.26	
3,282.00	6.10	219.40	3,268.28	-200.51	-153.13	-156.46	0.11	0.11	0.11	
3,377.00	6.20	220.30	3,362.74	-208.33	-159.65	-163.12	0.15	0.11	0.95	
3,472.00	6.20	218.80	3,457.18	-216.24	-166.18	-169.78	0.17	0.00	-1.58	
3,567.00	5.80	213.50	3,551.66	-224.24	-172.04	-175.78	0.72	-0.42	-5.58	
3,663.00	5.80	212.70	3,647.17	-232.36	-177.34	-181.21	0.08	0.00	-0.83	
3,758.00	6.00	211.00	3,741.67	-240.66	-182.49	-186.50	0.28	0.21	-1.79	
3,853.00	5.50	213.90	3,836.19	-248.69	-187.59	-191.73	0.61	-0.53	3.05	
3,948.00	4.60	200.90	3,930.82	-256.03	-191.49	-195.75	1.53	-0.95	-13.68	
4,043.00	4.40	203.60	4,025.53	-262.93	-194.31	-198.68	0.31	-0.21	2.84	
4,138.00	4.20	206.40	4,120.26	-269.39	-197.31	-201.80	0.31	-0.21	2.95	
4,232.00	3.90	206.90	4,214.03	-275.32	-200.29	-204.87	0.32	-0.32	0.53	
4,327.00	3.50	206.50	4,308.83	-280.80	-203.04	-207.72	0.42	-0.42	-0.42	
4,422.00	3.30	206.90	4,403.66	-285.83	-205.57	-210.33	0.21	-0.21	0.42	
4,518.00	3.10	205.70	4,499.51	-290.63	-207.95	-212.79	0.22	-0.21	-1.25	
4,613.00	2.90	206.20	4,594.38	-295.10	-210.13	-215.04	0.21	-0.21	0.53	
4,708.00	1.80	210.20	4,689.30	-298.55	-211.94	-216.91	1.17	-1.16	4.21	
4,803.00	1.70	211.20	4,784.25	-301.04	-213.42	-218.43	0.11	-0.11	1.05	
4,897.00	0.40	259.70	4,878.24	-302.30	-214.46	-219.50	1.56	-1.38	51.60	
4,992.00	0.30	247.70	4,973.24	-302.45	-215.02	-220.06	0.13	-0.11	-12.63	
5,087.00	0.70	214.60	5,068.23	-303.02	-215.58	-220.63	0.50	0.42	-34.84	
5,181.00	0.70	205.70	5,162.23	-304.01	-216.15	-221.22	0.12	0.00	-9.47	
5,276.00	0.70	193.00	5,257.22	-305.10	-216.54	-221.62	0.16	0.00	-13.37	
5,371.00	1.30	117.50	5,352.21	-306.16	-215.71	-220.81	1.38	0.63	-79.47	
5,466.00	1.10	112.60	5,447.19	-307.01	-213.91	-219.03	0.24	-0.21	-5.16	
5,561.00	1.10	95.30	5,542.17	-307.45	-212.16	-217.28	0.35	0.00	-18.21	
5,625.00	0.80	96.80	5,606.16	-307.56	-211.11	-216.23	0.47	-0.47	2.34	
5,657.00	0.80	92.00	5,638.16	-307.59	-210.66	-215.79	0.21	0.00	-15.00	
5,704.00	3.10	77.00	5,685.13	-307.32	-209.10	-214.22	4.97	4.89	-31.91	
5,752.00	8.40	81.00	5,732.87	-306.47	-204.37	-209.47	11.07	11.04	8.33	
5,799.00	15.10	88.40	5,778.86	-305.77	-194.84	-199.94	14.58	14.26	15.74	
5,846.00	20.60	88.20	5,823.58	-305.33	-180.45	-185.54	11.70	11.70	-0.43	

<b>Company:</b>	Bill Barrett Corp.	<b>Local Co-ordinate Reference:</b>	Well Anschutz State 4-62-2-1721CH2
<b>Project:</b>	Weld Co., CO	<b>TVD Reference:</b>	WELL @ 4566.00usft (Original Well Elev)
<b>Site:</b>	Sec.2-T4N-R62W	<b>MD Reference:</b>	WELL @ 4566.00usft (Original Well Elev)
<b>Well:</b>	Anschutz State 4-62-2-1721CH2	<b>North Reference:</b>	True
<b>Wellbore:</b>	Wellbore #1	<b>Survey Calculation Method:</b>	Minimum Curvature
<b>Design:</b>	Wellbore #1	<b>Database:</b>	EDMDBBW

Survey										
Measured Depth (usft)	Inclination (°)	Azimuth (°)	Vertical Depth (usft)	+N-S (usft)	+E-W (usft)	Vertical Section (usft)	Dogleg Rate (°/100usft)	Build Rate (°/100usft)	Turn Rate (°/100usft)	
5,893.00	25.10	81.90	5,866.89	-303.67	-162.30	-167.37	10.89	9.57	-13.40	
5,942.00	30.50	76.80	5,910.22	-299.36	-139.89	-144.88	12.03	11.02	-10.41	
5,989.00	39.00	76.60	5,948.80	-293.20	-113.84	-118.74	18.09	18.09	-0.43	
6,036.00	46.90	79.20	5,983.18	-286.55	-82.55	-87.34	17.22	16.81	5.53	
6,083.00	51.90	82.40	6,013.76	-280.88	-47.34	-52.04	11.83	10.64	6.81	
6,131.00	56.80	85.40	6,041.73	-276.77	-8.57	-13.20	11.40	10.21	6.25	
6,178.00	57.60	88.60	6,067.20	-274.71	30.88	26.27	5.97	1.70	6.81	
6,226.00	60.40	93.20	6,091.93	-275.38	71.99	67.37	10.07	5.83	9.58	
6,273.00	65.00	95.40	6,113.48	-278.52	113.63	108.94	10.63	9.79	4.68	
6,321.00	70.10	97.20	6,131.81	-283.40	157.70	152.93	11.18	10.62	3.75	
6,368.00	76.20	96.60	6,145.42	-288.80	202.34	197.47	13.04	12.98	-1.28	
6,414.00	83.70	94.40	6,153.45	-293.13	247.39	242.44	16.97	16.30	-4.78	
6,485.00	92.30	89.00	6,155.92	-295.22	318.22	313.23	14.30	12.11	-7.61	
6,576.00	89.80	90.60	6,154.26	-294.90	409.20	404.20	3.26	-2.75	1.76	
6,667.00	89.80	91.10	6,154.57	-296.25	500.18	495.15	0.55	0.00	0.55	
6,759.00	89.40	90.80	6,155.22	-297.78	592.17	587.10	0.54	-0.43	-0.33	
6,851.00	88.80	90.10	6,156.66	-298.50	684.15	679.06	1.00	-0.65	-0.76	
6,942.00	92.50	92.30	6,155.63	-300.41	775.11	769.96	4.73	4.07	2.42	
7,033.00	91.30	91.80	6,152.61	-303.66	866.00	860.79	1.43	-1.32	-0.55	
7,125.00	92.00	92.60	6,149.96	-307.19	957.89	952.61	1.16	0.76	0.87	
7,217.00	91.80	91.70	6,146.91	-310.64	1,049.77	1,044.42	1.00	-0.22	-0.98	
7,308.00	91.40	90.30	6,144.37	-312.23	1,140.72	1,135.33	1.60	-0.44	-1.54	
7,400.00	89.30	89.10	6,143.81	-311.74	1,232.71	1,227.32	2.63	-2.28	-1.30	
7,492.00	90.90	90.00	6,143.65	-311.02	1,324.70	1,319.31	2.00	1.74	0.98	
7,584.00	89.80	90.80	6,143.09	-311.66	1,416.70	1,411.28	1.48	-1.20	0.87	
7,677.00	89.90	89.40	6,143.33	-311.83	1,509.70	1,504.26	1.51	0.11	-1.51	
7,768.00	90.30	89.40	6,143.17	-310.87	1,600.69	1,595.26	0.44	0.44	0.00	
7,860.00	90.00	91.40	6,142.93	-311.52	1,692.68	1,687.23	2.20	-0.33	2.17	
7,951.00	88.60	90.50	6,144.04	-313.03	1,783.66	1,778.17	1.83	-1.54	-0.99	
8,043.00	87.10	89.70	6,147.49	-313.19	1,875.59	1,870.08	1.85	-1.63	-0.87	
8,134.00	87.50	87.90	6,151.78	-311.28	1,966.47	1,960.98	2.02	0.44	-1.98	
8,226.00	87.60	87.30	6,155.71	-307.43	2,058.30	2,052.86	0.66	0.11	-0.65	
8,318.00	89.70	87.30	6,157.88	-303.10	2,150.17	2,144.79	2.28	2.28	0.00	
8,411.00	90.60	87.80	6,157.64	-299.13	2,243.08	2,237.76	1.11	0.97	0.54	
8,503.00	90.80	86.40	6,156.51	-294.47	2,334.96	2,329.69	1.54	0.22	-1.52	
8,595.00	90.40	85.60	6,155.55	-288.05	2,426.73	2,421.56	0.97	-0.43	-0.87	
8,686.00	91.70	84.60	6,153.88	-280.28	2,517.37	2,512.33	1.80	1.43	-1.10	
8,754.00	92.80	85.80	6,151.21	-274.60	2,585.08	2,580.12	2.39	1.62	1.76	
8,846.00	91.40	86.70	6,147.84	-268.58	2,676.82	2,671.94	1.81	-1.52	0.98	
8,938.00	90.50	88.20	6,146.32	-264.49	2,768.71	2,763.89	1.90	-0.98	1.63	
9,028.00	90.20	86.50	6,145.77	-260.33	2,858.61	2,853.85	1.92	-0.33	-1.89	
9,119.00	91.10	87.50	6,144.73	-255.57	2,949.48	2,944.78	1.48	0.99	1.10	
9,212.00	91.10	89.80	6,142.95	-253.38	3,042.43	3,037.76	2.47	0.00	2.47	
9,304.00	89.60	89.70	6,142.39	-252.98	3,134.42	3,129.75	1.63	-1.63	-0.11	
9,394.00	90.80	90.90	6,142.07	-253.45	3,224.42	3,219.72	1.89	1.33	1.33	
9,486.00	90.50	90.60	6,141.03	-254.65	3,316.41	3,311.67	0.46	-0.33	-0.33	
9,578.00	89.80	91.00	6,140.79	-255.94	3,408.40	3,403.63	0.88	-0.76	0.43	
9,671.00	90.50	91.80	6,140.54	-258.21	3,501.37	3,496.55	1.14	0.75	0.86	
9,763.00	90.50	92.50	6,139.74	-261.66	3,593.30	3,588.41	0.76	0.00	0.76	
9,855.00	89.20	91.40	6,139.98	-264.79	3,685.24	3,680.29	1.85	-1.41	-1.20	
9,946.00	89.40	89.70	6,141.09	-265.66	3,776.23	3,771.24	1.88	0.22	-1.87	
10,038.00	88.80	89.60	6,142.54	-265.10	3,868.21	3,863.23	0.66	-0.65	-0.11	
10,129.00	90.70	91.00	6,142.94	-265.58	3,959.20	3,954.20	2.59	2.09	1.54	
10,221.00	91.10	90.80	6,141.49	-267.02	4,051.18	4,046.14	0.49	0.43	-0.22	

<b>Company:</b>	Bill Barrett Corp.	<b>Local Co-ordinate Reference:</b>	Well Anschutz State 4-62-2-1721CH2
<b>Project:</b>	Weld Co., CO	<b>TVD Reference:</b>	WELL @ 4566.00usft (Original Well Elev)
<b>Site:</b>	Sec.2-T4N-R62W	<b>MD Reference:</b>	WELL @ 4566.00usft (Original Well Elev)
<b>Well:</b>	Anschutz State 4-62-2-1721CH2	<b>North Reference:</b>	True
<b>Wellbore:</b>	Wellbore #1	<b>Survey Calculation Method:</b>	Minimum Curvature
<b>Design:</b>	Wellbore #1	<b>Database:</b>	EDMDBBW

Survey										
Measured Depth (usft)	Inclination (°)	Azimuth (°)	Vertical Depth (usft)	+N/-S (usft)	+E/-W (usft)	Vertical Section (usft)	Dogleg Rate (°/100usft)	Build Rate (°/100usft)	Turn Rate (°/100usft)	
10,313.00	90.10	89.30	6,140.53	-267.10	4,143.17	4,138.11	1.96	-1.09	-1.63	
10,405.00	90.30	88.80	6,140.21	-265.58	4,235.16	4,230.11	0.59	0.22	-0.54	
10,497.00	90.50	88.90	6,139.56	-263.73	4,327.14	4,322.11	0.24	0.22	0.11	
10,590.00	90.50	88.40	6,138.75	-261.54	4,420.11	4,415.11	0.54	0.00	-0.54	
10,681.00	90.10	86.50	6,138.28	-257.49	4,511.01	4,506.06	2.13	-0.44	-2.09	
10,773.00	90.20	85.20	6,138.03	-250.83	4,602.77	4,597.92	1.42	0.11	-1.41	
10,865.00	88.60	82.70	6,139.00	-241.14	4,694.24	4,689.54	3.23	-1.74	-2.72	
10,957.00	89.10	82.80	6,140.84	-229.53	4,785.49	4,780.97	0.55	0.54	0.11	
11,048.00	90.90	84.10	6,140.84	-219.15	4,875.89	4,871.53	2.44	1.98	1.43	
11,140.00	92.60	85.00	6,138.04	-210.42	4,967.42	4,963.20	2.09	1.85	0.98	
11,232.00	90.60	84.50	6,135.47	-202.00	5,059.00	5,054.90	2.24	-2.17	-0.54	
11,324.00	92.30	87.00	6,133.14	-195.19	5,150.70	5,146.71	3.29	1.85	2.72	
11,415.00	90.30	87.20	6,131.07	-190.59	5,241.56	5,237.63	2.21	-2.20	0.22	
11,507.00	89.20	88.20	6,131.48	-186.89	5,333.48	5,329.60	1.62	-1.20	1.09	
11,598.00	89.80	88.90	6,132.27	-184.59	5,424.45	5,420.59	1.01	0.66	0.77	
11,690.00	90.20	89.40	6,132.27	-183.23	5,516.44	5,512.59	0.70	0.43	0.54	
11,782.00	90.50	90.10	6,131.71	-182.83	5,608.43	5,604.58	0.83	0.33	0.76	
11,874.00	91.00	90.40	6,130.50	-183.23	5,700.43	5,696.56	0.63	0.54	0.33	
11,966.00	90.40	91.30	6,129.38	-184.59	5,792.41	5,788.50	1.18	-0.65	0.98	
12,058.00	90.40	90.80	6,128.74	-186.28	5,884.39	5,880.44	0.54	0.00	-0.54	
12,150.00	89.80	91.00	6,128.58	-187.72	5,976.38	5,972.39	0.69	-0.65	0.22	
12,206.00	89.70	90.90	6,128.82	-188.65	6,032.37	6,028.36	0.25	-0.18	-0.18	
12,299.00	89.40	91.30	6,129.55	-190.44	6,125.35	6,121.30	0.54	-0.32	0.43	
12,391.00	89.20	91.50	6,130.68	-192.68	6,217.31	6,213.21	0.31	-0.22	0.22	
12,483.00	89.50	92.30	6,131.72	-195.73	6,309.26	6,305.09	0.93	0.33	0.87	
12,575.00	89.40	90.30	6,132.60	-197.82	6,401.22	6,397.01	2.18	-0.11	-2.17	
12,667.00	89.50	89.70	6,133.49	-197.82	6,493.22	6,488.99	0.66	0.11	-0.65	
12,758.00	90.10	89.00	6,133.80	-196.79	6,584.21	6,579.99	1.01	0.66	-0.77	
12,850.00	89.90	88.80	6,133.80	-195.02	6,676.20	6,671.99	0.31	-0.22	-0.22	
12,942.00	90.60	89.00	6,133.40	-193.26	6,768.18	6,763.99	0.79	0.76	0.22	
13,034.00	90.90	88.70	6,132.20	-191.41	6,860.15	6,855.98	0.46	0.33	-0.33	
13,125.00	90.50	88.60	6,131.09	-189.27	6,951.12	6,946.97	0.45	-0.44	-0.11	
13,217.00	90.90	87.70	6,129.96	-186.30	7,043.06	7,038.95	1.07	0.43	-0.98	
13,308.00	91.30	87.90	6,128.21	-182.80	7,133.98	7,129.91	0.49	0.44	0.22	
13,400.00	90.90	88.20	6,126.45	-179.67	7,225.91	7,221.88	0.54	-0.43	0.33	
13,492.00	90.30	88.30	6,125.48	-176.86	7,317.86	7,313.87	0.66	-0.65	0.11	
13,584.00	89.80	88.90	6,125.40	-174.62	7,409.83	7,405.87	0.85	-0.54	0.65	
13,676.00	89.80	87.60	6,125.73	-171.81	7,501.79	7,497.85	1.41	0.00	-1.41	
13,768.00	91.10	87.60	6,125.00	-167.95	7,593.70	7,589.82	1.41	1.41	0.00	
13,860.00	90.80	88.60	6,123.48	-164.91	7,685.64	7,681.79	1.13	-0.33	1.09	
13,955.00	89.60	88.50	6,123.15	-162.50	7,780.60	7,776.79	1.27	-1.26	-0.11	
14,051.00	88.50	88.60	6,124.74	-160.07	7,876.56	7,872.77	1.15	-1.15	0.10	
14,146.00	87.60	88.30	6,127.97	-157.50	7,971.47	7,967.71	1.00	-0.95	-0.32	
14,241.00	87.20	88.50	6,132.28	-154.85	8,066.33	8,062.60	0.47	-0.42	0.21	
<b>Last Archer Survey</b>										
14,316.00	86.70	88.40	6,136.27	-152.83	8,141.20	8,137.49	0.68	-0.67	-0.13	
<b>PTB - Anschutz State4-62-2-1721CH2 tgt</b>										
14,375.00	86.70	88.40	6,139.67	-151.18	8,200.08	8,196.39	0.00	0.00	0.00	

<b>Company:</b>	Bill Barrett Corp.	<b>Local Co-ordinate Reference:</b>	Well Anschutz State 4-62-2-1721CH2
<b>Project:</b>	Weld Co., CO	<b>TVD Reference:</b>	WELL @ 4566.00usft (Original Well Elev)
<b>Site:</b>	Sec.2-T4N-R62W	<b>MD Reference:</b>	WELL @ 4566.00usft (Original Well Elev)
<b>Well:</b>	Anschutz State 4-62-2-1721CH2	<b>North Reference:</b>	True
<b>Wellbore:</b>	Wellbore #1	<b>Survey Calculation Method:</b>	Minimum Curvature
<b>Design:</b>	Wellbore #1	<b>Database:</b>	EDMDBBW

Survey Annotations				
Measured Depth (usft)	Vertical Depth (usft)	Local Coordinates		Comment
		+N/-S (usft)	+E/-W (usft)	
100.00	100.00	-0.10	-0.53	First Archer Survey
14,316.00	6,136.27	-152.83	8,141.20	Last Archer Survey
14,375.00	6,139.67	-151.18	8,200.08	PTB

Checked By: _____	Approved By: _____	Date: _____
-------------------	--------------------	-------------