

COLUMBINE LOGGING

Scale: 5" / 100'
Measured Depth Log

Well Name Anshutz State 4-62-2-1721 CH2 Vert

Location SWNW Sec 2 T4N R62W

State Colorado

County Weld

Country USA

Rig Number Nabor M22

API Number 05-123-38963

AFE # 18748D

Region DJ Basin

Field Wildcat

Spud Date 5/3/2014

Surface Coordinates SWNW Sec 02-T4N-R62W
1614' FNL 250' FWL

Bottom Hole Coordinates Projected:
SWNW Sec 02-T4N-R62W
1925' FNL 2280' FEL

Ground Elevation 4544'

K.B. Elevation 4566'

Logged Interval 4700'

Formation Shannon

Type of Drilling Fluid LSND

Operator

Company Bill Barrett Corporation

Address 1099 18th Street, Suite 2300
Denver, CO 80202

Geologist

Name Scott Hampton

Company Bill Barrett Corporation

Address 1099 18th Street, Suite 2300
Denver, CO 80202

Other

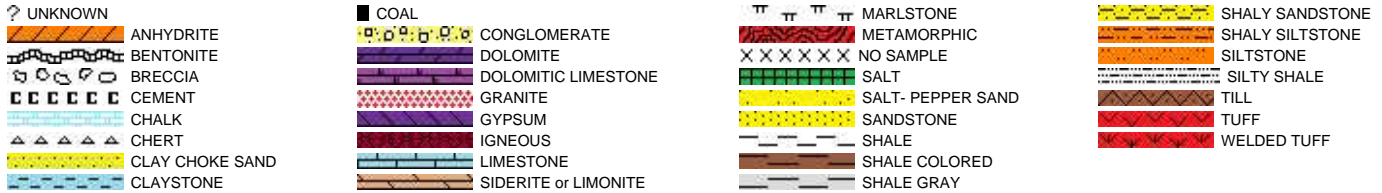
Charles Trodick

Senior Wellsite Geologist

Mark Raimo

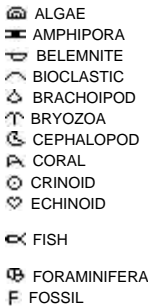
Wellsite Geologist

Rock Types



Accessories

Fossils



GASTROPOD

INOCERAMUS

OOLITE

OSTRACOD

PELECYPOD

PELLET

PISOLITE

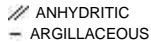
PLANT REMAINS

PLANT SPORES

SCAPHOPOD

STROMATOPOROID

Minerals



ARGILLITE GRAIN

BENTONITE

BITUMENOUS SUBSTANCE

BRECCIA FRAGMENTS

CALCAREOUS

CARBONACEOUS FLAKES

CHTDK

CHTLT

COAL - THIN BEDS

DOLOMITIC

FELDSPAR

FERRUGINOUS PELLET

FERRUGINOUS

GLAUCONITE

GYPSIFEROUS

HEAVY MINERAL

KAOLIN

MARCASITE

MARLSTONE

MICACEOUS

MINERAL CRYSTALS

NODULES

PHOSPHATE PELLETS

PYRITE

SALT CAST

SANDY

SIDERITE

SILICEOUS

SILTY

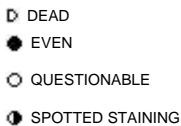
TUFFACEOUS

Stringer



Other Symbols

Oil Show



Porosity



ORGANIC

PINPOINT

VUGGY

Engineering



FAULT

FORMATION TOP

GAS SHOW

OIL SHOW

MN DEPTH MN DEPTH

MN DEPTH MN DEPTH (RIGHT)

NORMAL FAULT

OVERTURNED STRATA

REVERSE FAULT

CASING

SIDEWALL CORE (LEFT)

SIDEWALL CORE (RIGHT)

SLIDE

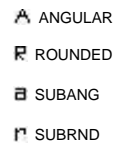
SURVEY

DRILL STEM TEST

WIRELINE TESTED - LEFT

WIRELINE TESTED - RT

Rounding



Textures



E EARTHY

FINELYXLN

GRAINSTONE

L LITHOGRAPHIC

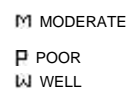
MX MICROXLN

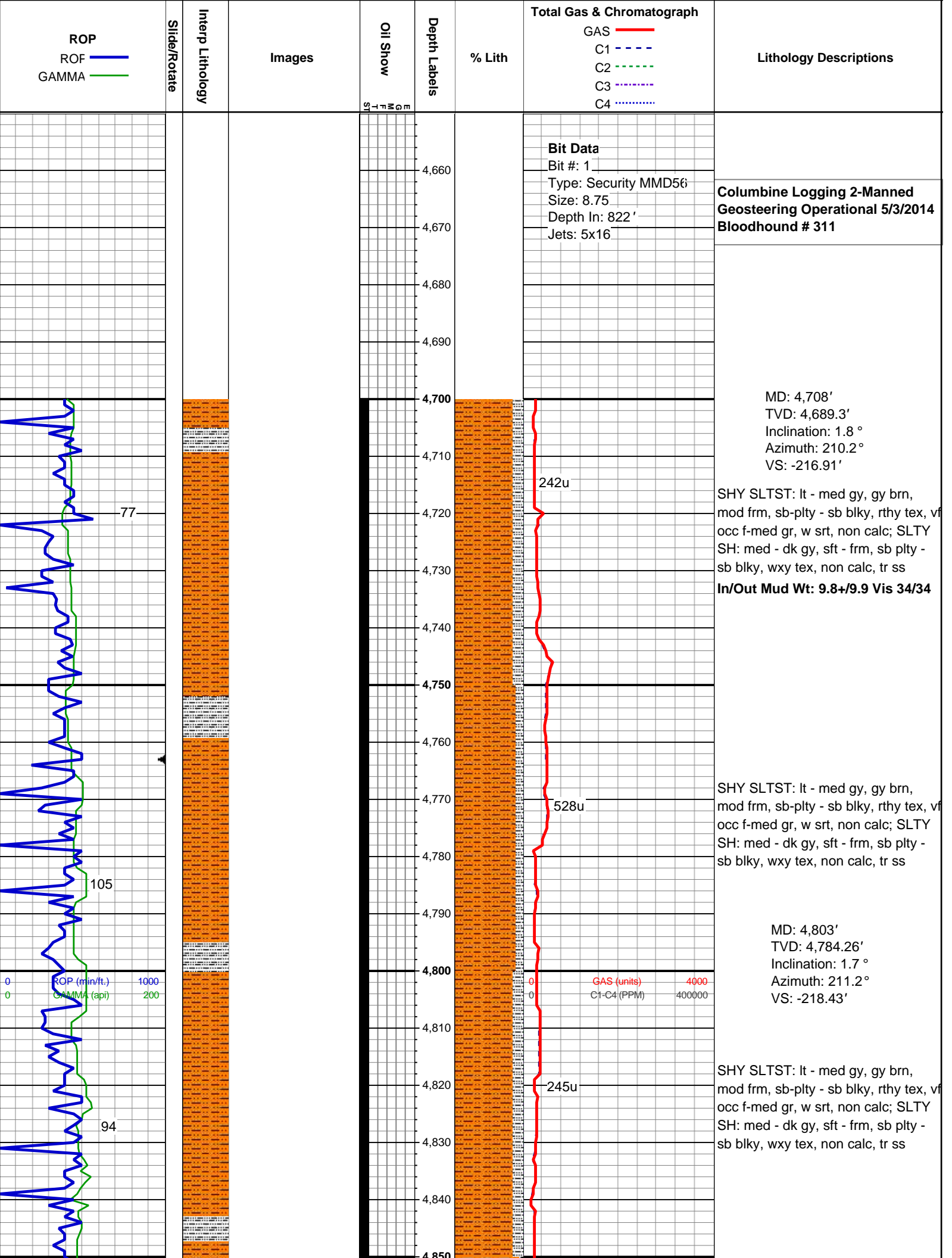
MS MUDSTONE

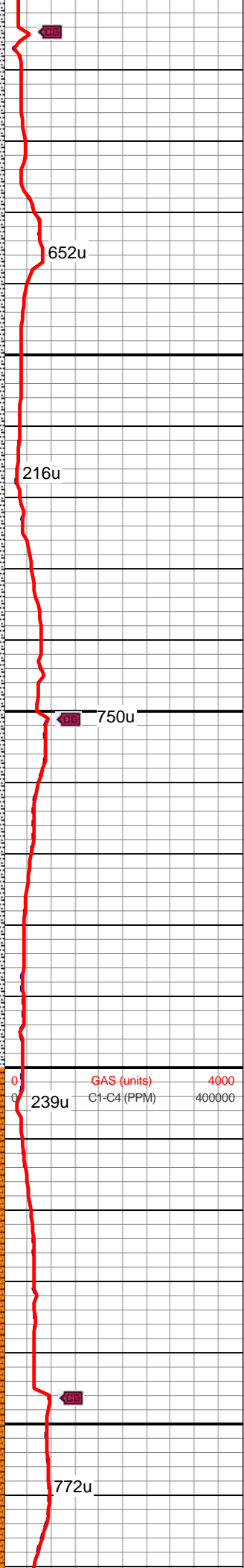
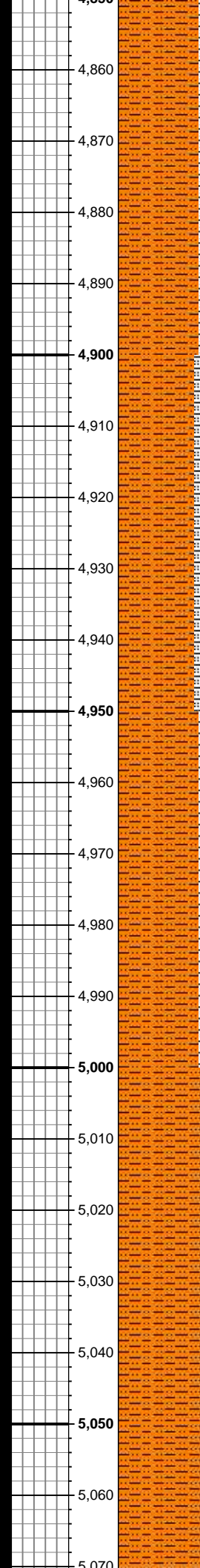
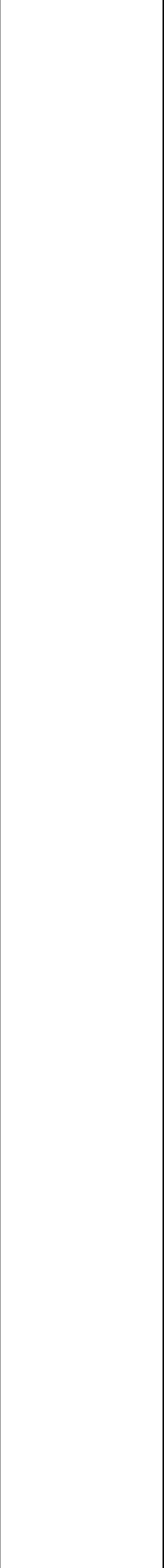
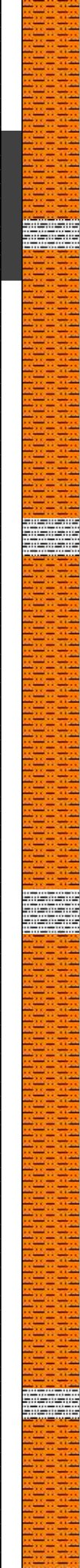
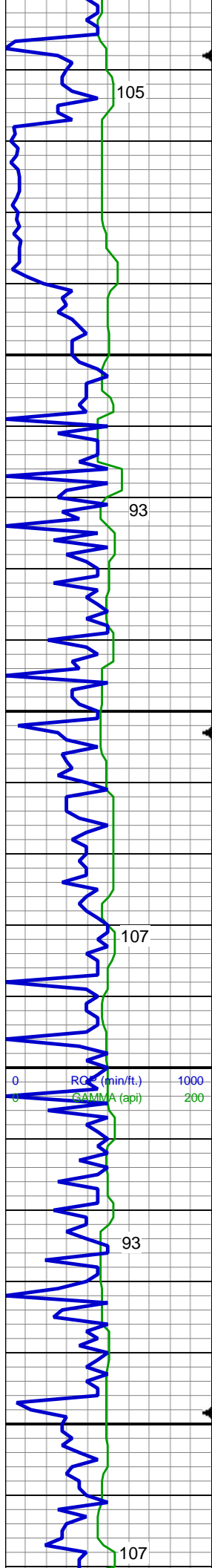
PS PACKSTONE

WS WACKESTONE

Sorting







SHY SLTST: It - med gy, gy brn, mod frm, sb-plty - sb blk, rthy tex, vf occ f-med gr, w srt, non calc; SLTY SH: med - dk gy, sft - frm, sb plty - sb blk, wxy tex, non calc, tr ss

In/Out Mud Wt: 10.1/10.1 Vis 35/35

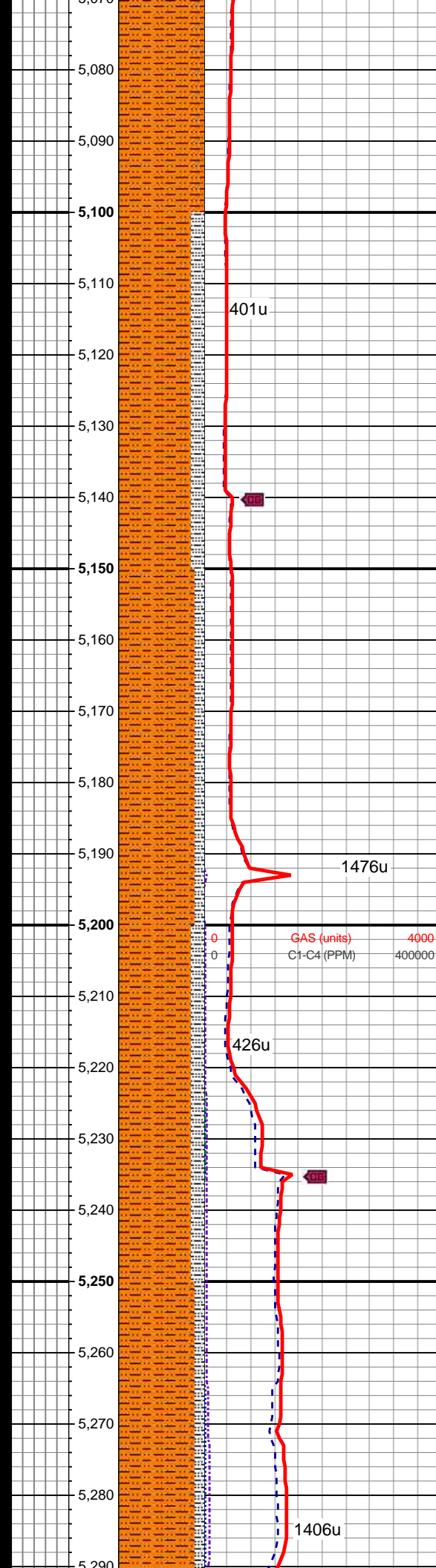
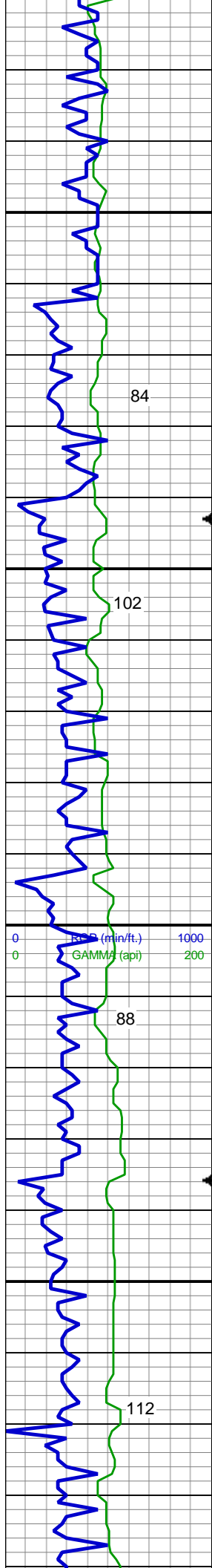
MD: 4,897'
TVD: 4,878.24'
Inclination: 0.4 °
Azimuth: 259.7°
VS: -219.5'

SHY SLTST: It - med gy, gy brn, mod frm, sb-plty - sb blk, rthy tex, vf occ f-med gr, w srt, non calc; SLTY SH: med - dk gy, sft - frm, sb plty - sb blk, wxy tex, non calc, tr ss

MD: 4,992'
TVD: 4,973.24'
Inclination: 0.3 °
Azimuth: 247.7°
VS: -220.06'

SHY SLTST: It - med gy, gy brn, mod frm, sb-plty - sb blk, rthy tex, vf occ f-med gr, w srt, non calc; SLTY SH: med - dk gy, sft - frm, sb plty - sb blk, wxy tex, non calc, tr ss

SHY SLTST: It - med gy, gy brn, mod frm, sb-plty - sb blk, rthy tex, vf occ f-med gr, w srt, non calc; SLTY SH: med - dk gy, sft - frm, sb plty - sb blk, wxy tex, non calc, tr ss



mod frm, sb-plty - sb blk, rthy tex, vf
occ f-med gr, w srt, non calc; SLTY
SH: med - dk gy, sft - frm, sb plty -
sb blk, wxy tex, non calc, tr ss

MD: 5,087'
TVD: 5,068.23'
Inclination: 0.7 °
Azimuth: 214.6°
VS: -220.83'

SHY SLTST: lt - med gy, gy brn,
mod frm, sb-plty - sb blk, rthy tex, vf
occ f-med gr, w srt, non calc; SLTY
SH: med - dk gy, sft - frm, sb plty -
sb blk, wxy tex, non calc, tr ss

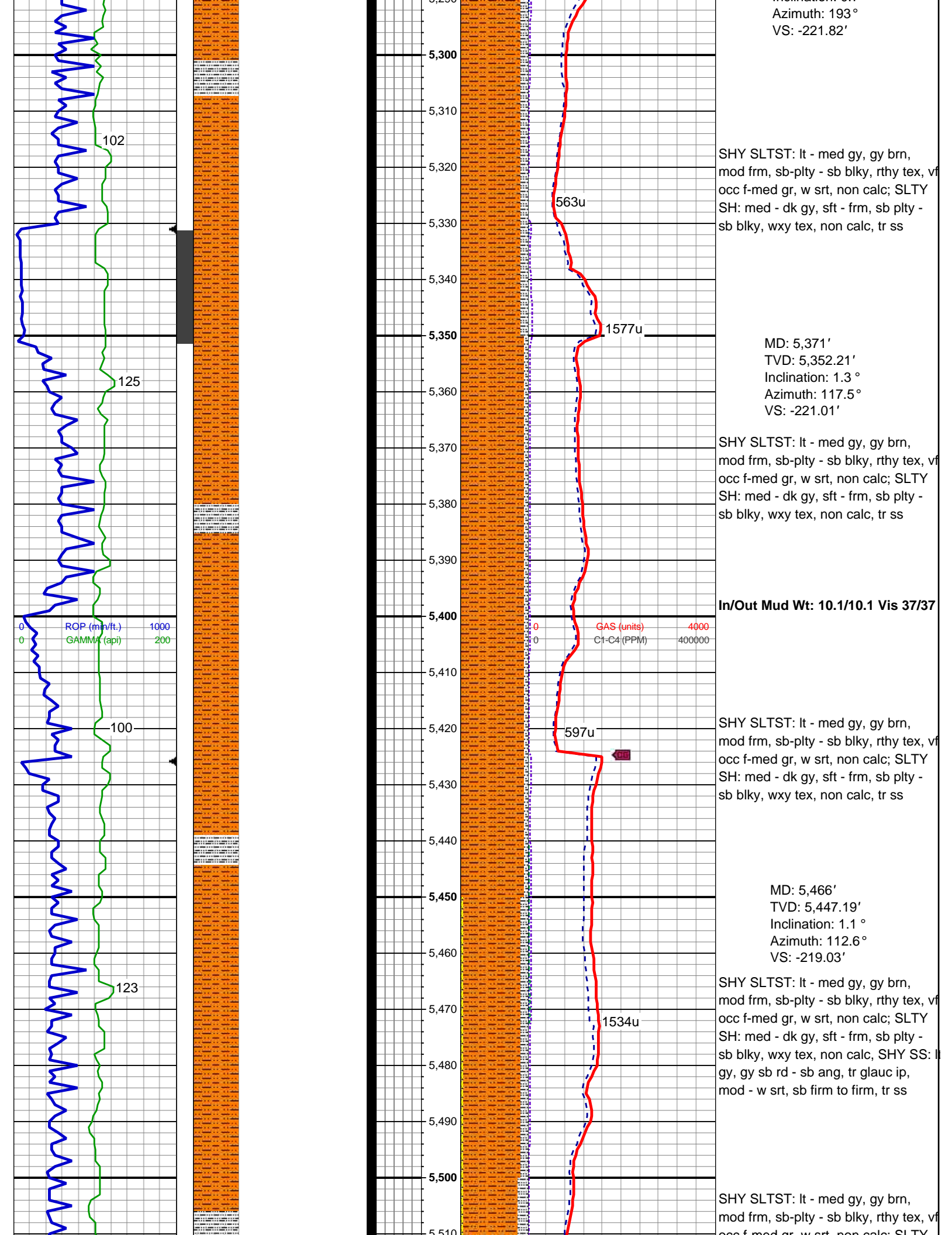
SHY SLTST: lt - med gy, gy brn,
mod frm, sb-plty - sb blk, rthy tex, vf
occ f-med gr, w srt, non calc; SLTY
SH: med - dk gy, sft - frm, sb plty -
sb blk, wxy tex, non calc, tr ss

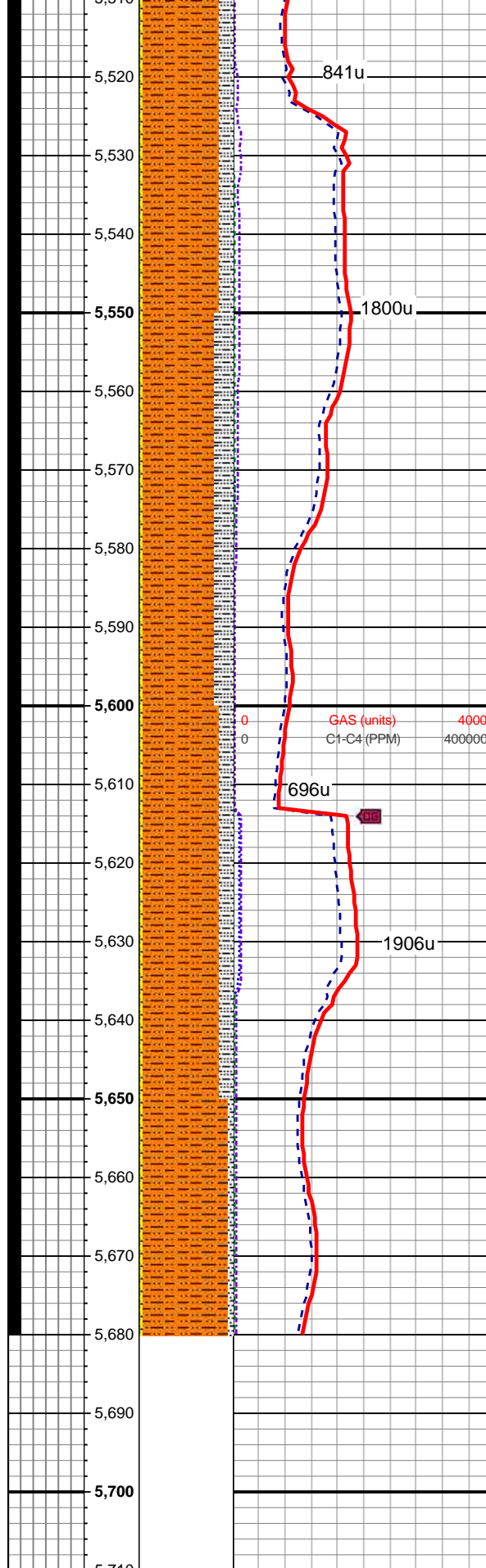
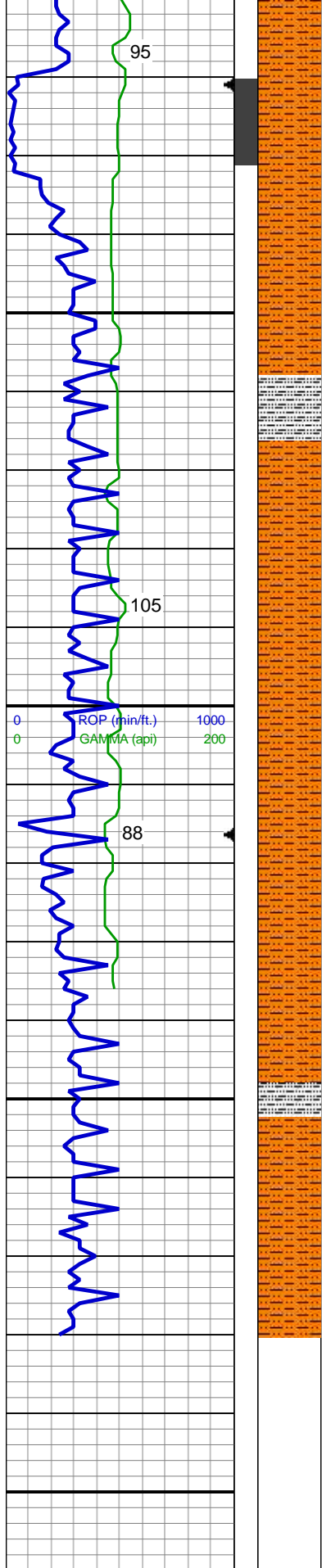
MD: 5,181'
TVD: 5,162.23'
Inclination: 0.7 °
Azimuth: 205.7°
VS: -221.42'

SHY SLTST: lt - med gy, gy brn,
mod frm, sb-plty - sb blk, rthy tex, vf
occ f-med gr, w srt, non calc; SLTY
SH: med - dk gy, sft - frm, sb plty -
sb blk, wxy tex, non calc, tr ss

SHY SLTST: lt - med gy, gy brn,
mod frm, sb-plty - sb blk, rthy tex, vf
occ f-med gr, w srt, non calc; SLTY
SH: med - dk gy, sft - frm, sb plty -
sb blk, wxy tex, non calc, tr ss

MD: 5,276'
TVD: 5,257.22'
Inclination: 0.7 °





SH: med - dk gy, sft - frm, sb plty - sb blk, wxy tex, non calc, SHY SS: lt - med gy, gy sb rd - sb ang, tr glauc ip, mod - w srt, sb firm to firm, tr ss

In/Out Mud Wt: 10.2/10.2 Vis 40/40

MD: 5,561'
TVD: 5,542.17'
Inclination: 1.1 °
Azimuth: 95.3 °
VS: -217.29'

SHY SLTST: lt - med gy, gy brn, mod frm, sb-plty - sb blk, rthy tex, vt occ f-med gr, w srt, non calc; SLTY SH: med - dk gy, sft - frm, sb plty - sb blk, wxy tex, non calc, SHY SS: lt - med gy, gy sb rd - sb ang, tr glauc ip, mod - w srt, sb firm to firm, tr ss

MD: 5,624'
TVD: 5,605.16'
Inclination: 0.8 °
Azimuth: 96.8 °
VS: -216.25'

SHY SLTST: lt - med gy, gy brn, mod frm, sb-plty - sb blk, rthy tex, vt occ f-med gr, w srt, non calc; SLTY SH: med - dk gy, sft - frm, sb plty - sb blk, wxy tex, non calc, SHY SS: lt - med gy, gy sb rd - sb ang, tr glauc ip, mod - w srt, sb firm to firm, tr ss

SHY SLTST: lt - med gy, gy brn, mod frm, sb-plty - sb blk, rthy tex, vt occ f-med gr, w srt, non calc; SLTY SH: med - dk gy, sft - frm, sb plty - sb blk, wxy tex, non calc, SHY SS: lt - med gy, gy sb rd - sb ang, tr glauc ip, mod - w srt, sb firm to firm, tr ss

TOOH TO CHANGE MWD
TOOLS: 13:04 MST ON 5/4/2013
VERTICAL TD: 5680' MD
DATA CONTINUED ON
HORIZONTAL LOG

THANK YOU FOR USING
COLUMBINE LOGGING INC.