

LEGEND:

 **PROPOSED LOCATION**

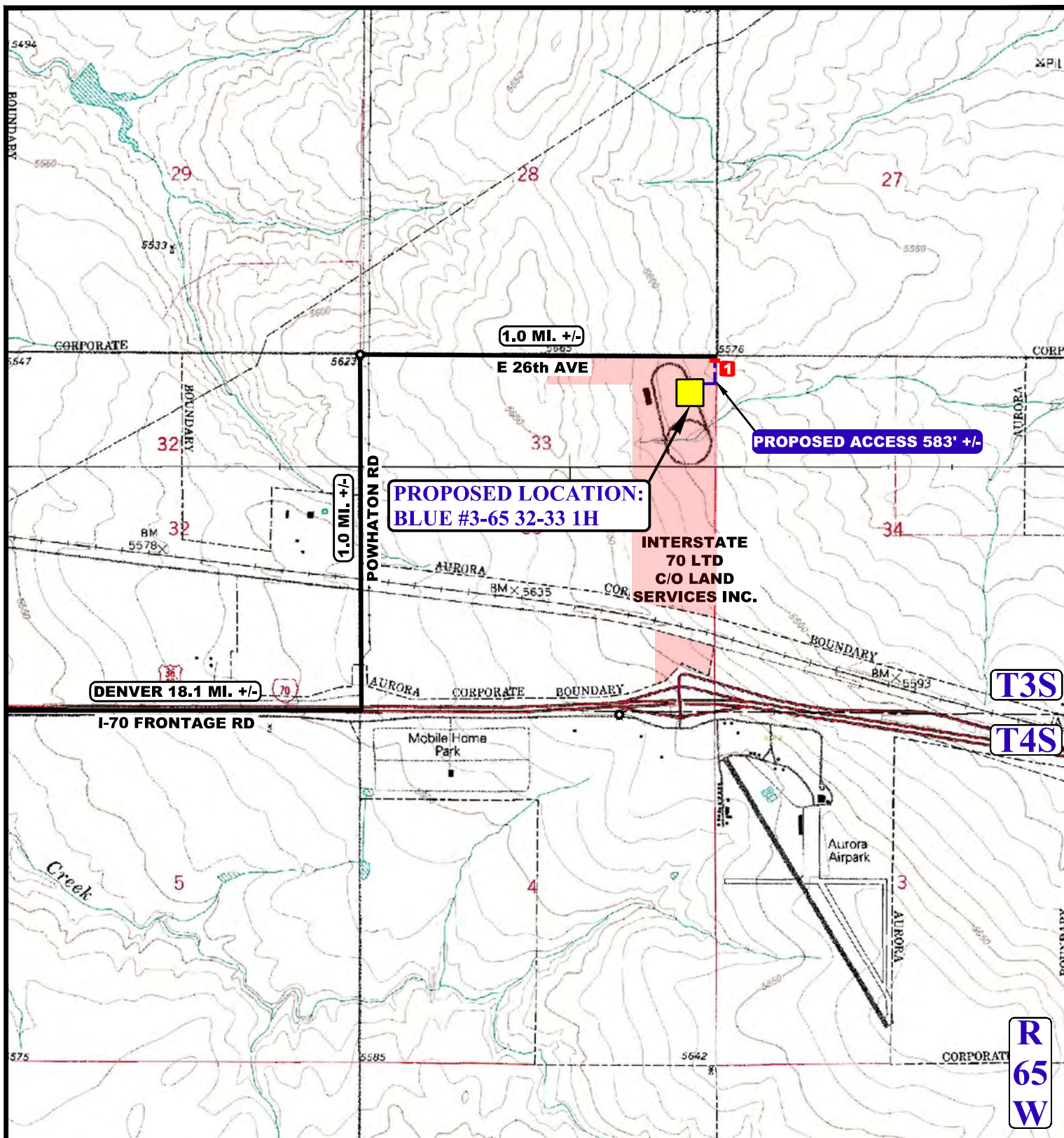
ConocoPhillips Company

**BLUE #3-65 32-33 1H
SECTION 33, T3S, R65W, 6th P.M.
560 FNL 400 FEL**



UELS, LLC
Corporate Office * 85 South 200 East
Vernal, UT 84078 * (435) 789-1017

DRAWN BY: T.W.	DATE DRAWN: 05-27-14
SCALE: 1:100,000	REVISED: 00-00-00
ACCESS ROAD MAP	TOPO A



NOTE: PARCEL DATA SHOWN HAS BEEN OBTAINED FROM VARIOUS SOURCES AND SHOULD BE USED FOR MAPPING, GRAPHIC AND PLANNING PURPOSES ONLY. NO WARRANTY IS MADE BY UINTAH ENGINEERING AND LAND SURVEYING (UELS) FOR ACCURACY OF THE PARCEL DATA.

LEGEND:

- EXISTING ROAD
- PROPOSED ROAD
- EXISTING POWER LINE
- * * * EXISTING FENCE
- 1 CULVERT REQUIRED

ConocoPhillips Company

BLUE #3-65 32-33 1H
SECTION 33, T3S, R65W, 6th P.M.
560 FNL 400 FEL

DRAWN BY: T.W.

DATE DRAWN: 05-27-14

SCALE: 1" = 2000'

REVISED: 00-00-00

ACCESS ROAD MAP

TOPO B



UELS, LLC
Corporate Office * 85 South 200 East
Vernal, UT 84078 * (435) 789-1017

