

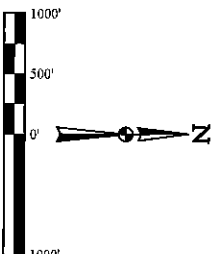
T3S, R65W, 6th P.M.

ConocoPhillips Company

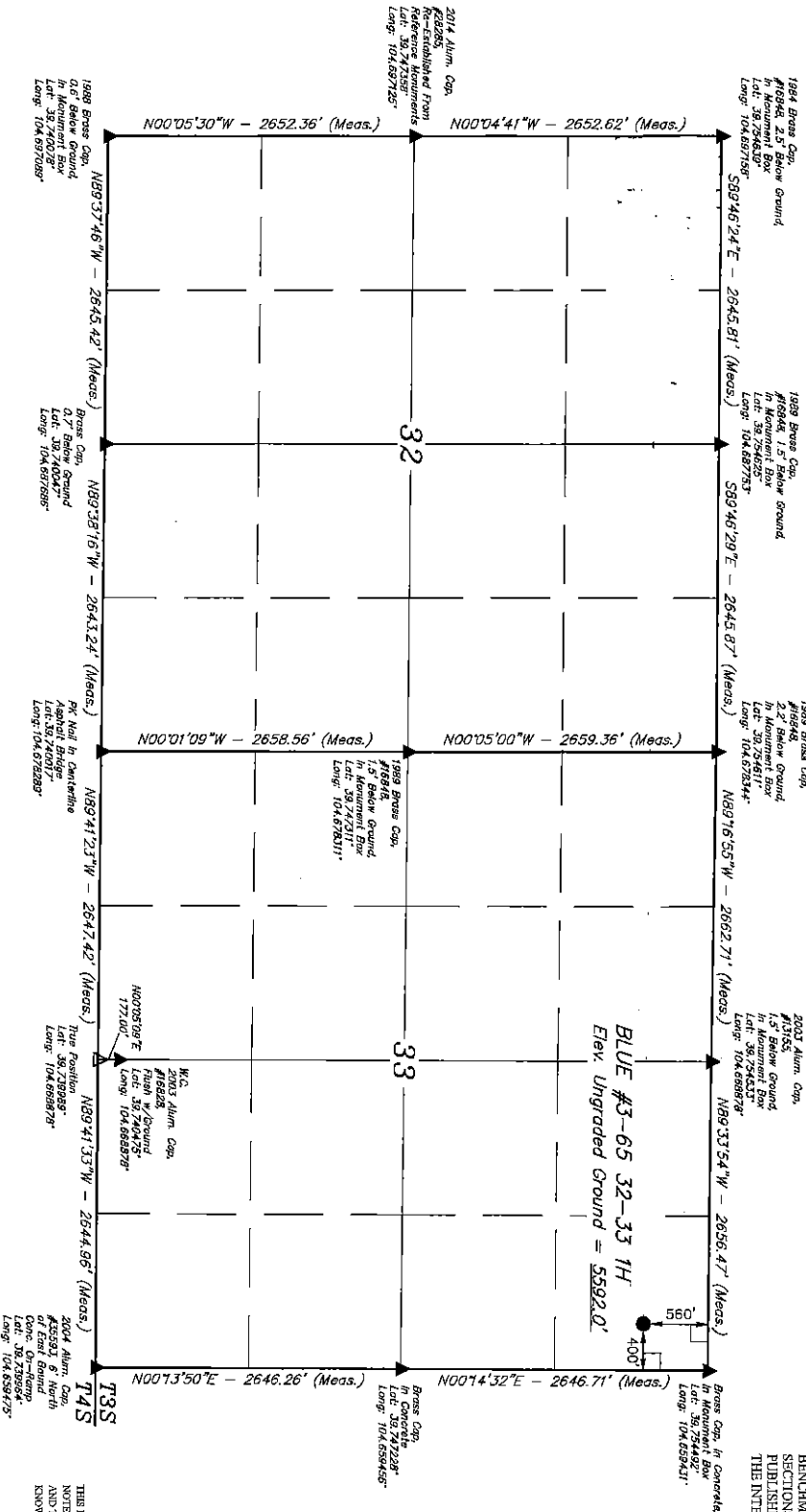
BLUE #3-65 32-33 1H
NE 1/4 NE 1/4, SECTION 33, T3S, R65W, 6th P.M.
ADAMS COUNTY, COLORADO

BASIS OF BEARINGS IS A GPS OBSERVATION
BASIS OF ELEVATION IS A GPS OBSERVATION

BENCHMARK 3741010 IS ON THE SECTION LINE BETWEEN SECTIONS 12 & 13, T3S, R64W, 6th P.M. TAKEN FROM 1988 PUBLISHED DATA BY THE UNITED STATES DEPARTMENT OF THE INTERIOR, GEOLOGICAL SURVEY AS BEING 6954.61 FEET.

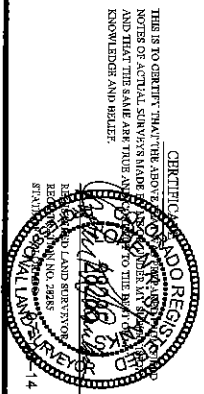


LINE TABLE		
LINE	DIRECTION	LENGTH
L1	N89°46'24"W	135.00'



PDOP = 1.6

NAD 83 SURFACE LOCATION	
EASTING	1046998.85
NORTHING	1046998.85
NAD 27 SURFACE LOCATION	
EASTING	1046998.85
NORTHING	1046998.85
STATE PLANE NAD 83	
EASTING	1046998.85
NORTHING	1046998.85



UNTAH
DRAWN BY: J.S.
DATE: 05-08-14
REVISOR: 00-04-00
SCALE: 1" = 1000'

WELL LOCATION PLAT

LEGEND:
● = PROPOSED WELLHEAD
○ = TARGET BOTTOM HOLE
◊ = PRODUCTION INTERVAL
▲ = SECTION CORNERS LOCATED

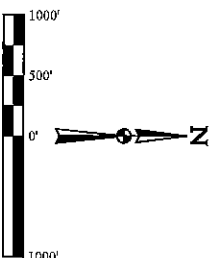
T3S, R65W, 6th P.M.

ConocoPhillips Company

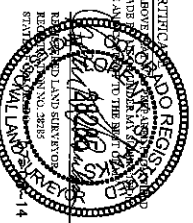
BLUE #3-65 32-33 1H
NE 1/4 NE 1/4, SECTION 33, T3S, R65W, 6th P.M.
ADAMS COUNTY, COLORADO

SECTION 33
BASIS OF BEARINGS IS A GPS OBSERVATION
BASIS OF ELEVATION

BENCHMARK 374 LOCATED ON THE SECTION LINE BETWEEN
SECTIONS 12 & 13, T3S, R64W, 6th P.M. TAKEN FROM 1983
PUBLISHED DATUM BY THE UNITED STATES DEPARTMENT OF
THE INTERIOR, GEOLOGICAL SURVEY AS BEING 6054.61 FEET.



LINE TABLE	
LINE	DIRECTION LENGTH
L1	N89°46'24"W 135.00'



CERTIFICATE
THIS IS TO CERTIFY THAT THE ABOVE
NOTES OF ACTUAL SURVEY MADE
AND THAT THE SCALE AND TRUE AND
KNOWLEDGE AND BELIEF.

STATE OF COLORADO
DIVISION OF LANDS AND MINERALS
REGISTERED SURVEYOR
NO. 2283
JUL 14 2014

NAD 83 SURFACE LOCATION	
LATITUDE	39°43'10.65" N (39.719350)
LONGITUDE	-104°39'33.69" W (104.660883)
NAD 27 SURFACE LOCATION	
LATITUDE	39°43'10.76" N (39.719372)
LONGITUDE	-104°39'37.20" W (104.660933)
STATE PLANE NAD 83	
N 115972.87 E 225956.57	
N 13977.20 E 224089.99	

SURVEYED BY: GREG VERNER, C.T.	
DATE: 05-08-14	
DRAWN BY: J.S.	
DATE: 05-20-14	
REVISOR: 06-01-00	
SECTION BREAKDOWN	
SCALE: 1" = 1000'	



UNITHA LLC
Corporate Office: 2500 E. 10th Ave., Suite 200
Vernal, UT 84078 • (435) 789-1017

LEGEND:
● = PROPOSED WELLHEAD
○ = TARGET BOTTOM HOLE
— = PRODUCTION INTERVAL
▲ = SECTION CORNERS LOCATED

